

Meridian, Mississippi

A. Transmitter Site:

Site Location: **9.2 km W of Rose Hill, MS**

Mailing Address **3825 Ridgewood Road**
Jackson, MS 39211

NCE-FM Channel	Number	201
	Frequency	88.1 MHz
	Class	C

Height of Site Above Mean Sea Level (AMSL)	192.0 M
Overall Height of Structure Above Ground	322.6 M
(including all appurtenances)	
Overall Height of Structure Above Mean Sea Level	514.6 M
(including all appurtenances)	
Height of Site Above Average Terrain	51.6 M
Antenna Height Radiation Center (R/C) Above Ground	267.0 M
Antenna Height R/C Above Mean Sea Level	459.0 M
Antenna Height R/C Above Average Terrain	318.6 M
Average of All Non-Odd Radials	140.4 M

Transmitter Power Required	22.0 kW
Maximum Power Input to Antenna	18.2 kW
Transmission Line Loss	0.83 dB
Transmission Line Efficiency	82.7%
RMS Gain at Main Lobe	7.40 dB
RMS Gain at Horizontal	7.40 dB
Maximum Effective Radiated Power	20.00 dBk
In Beam Maximum	100.0 kW
Maximum Effective Radiated Power	20.00 dBk
In Horizontal Plane	100.0 kW

WMAW-FM CHANNEL 201

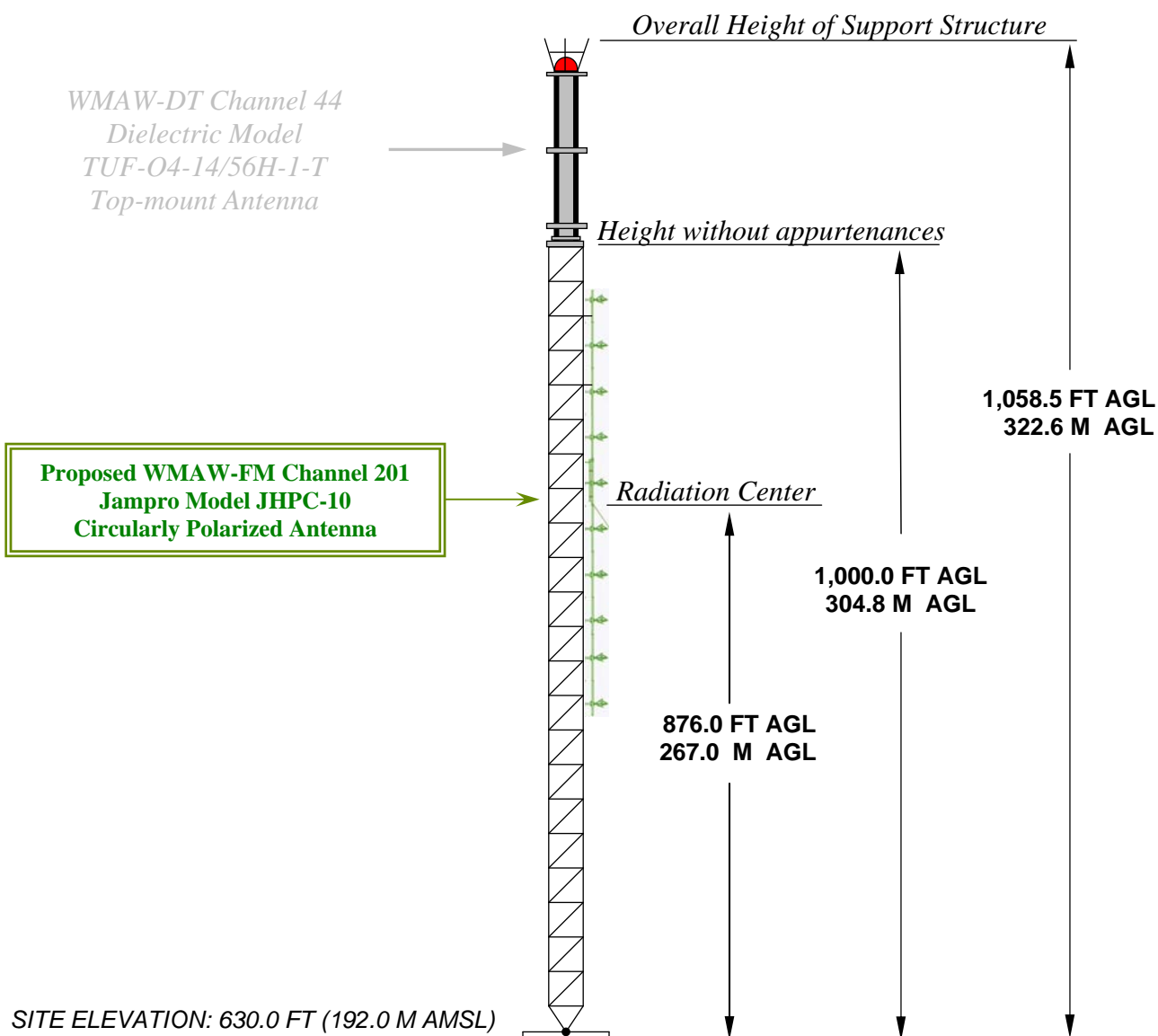
Meridian, Mississippi

DATA FOR PROPOSED NONDIRECTIONAL TRANSMITTING ANTENNA

- A. **Antenna:** Jampro Model JHPC-10 circularly polarized, nondirectional, side-mount antenna.
- B. **Electrical Beam Tilt:** None
- C. **Mechanical Beam Tilt:** None
- D.

<u>Peak Gain</u>	<u>Horizontal Polarization</u>
Maximum:	5.5 (7.40 dB)
Horizontal:	5.5 (7.40 dB)
- E. **Length:** 100.5 feet (30.6 meters)
- F. **Transmitter Power Output (TPO):** 22.0 kW
- G. **Transmission Line:** 3" Rigid
- H. **Transmission Line Efficiency:** 82.7%
- I. **Transmission Line Length:** 950 feet (289.6 meters)
- J. **Transmission Line Attenuation:** 0.087 dB/100 ft
- K. **Transmission Line Loss:** 0.83 dB

ANTENNA STRUCTURE ELEVATION VIEW



OVERALL HEIGHT AGL: 322.6 M
OVERALL HEIGHT AMSL: 514.6 M
RADIATION CENTER AGL: 267.0 M
RADIATION CENTER AMSL: 459.0 M
AVERAGE OF NON-ODD RADIALS: 140.4 M
RADIATION CENTER HAAT: 318.6 M
SITE HAAT: 51.6 M

COORDINATES: (NAD 27)
N. LATITUDE 32° 08' 18"
W. LONGITUDE 89° 05' 36"
Antenna Structure Registration Number:
1041037

NOTE: NOT TO SCALE

KESSLER AND GEHMAN
TELECOMMUNICATIONS CONSULTING ENGINEERS
507 N.W. 60th Street, Suite C
Gainesville, Florida 32607

WMAW-FM Channel 201
Meridian, Mississippi

20090520

EXHIBIT 3