

# TV6 Calculation for Paragon, IN

TV6 Call sign

WRTV

Fcc Search

61.1 dBU

City

Indianapolis

State

IN

COR AMSL (m)

531

HAAT(m)

279

Latitude

395357

Longitude

861204

TV ERP (kW)

100.000

FM Horizontal ERP

1.15

☒ Outside City Of 50k

TV

FM

57

63

1

Plot Scale

2000

☒ DLG

☐ AJPI

☒ Hide Zeros

☒ TIGER

☒ Plot All Centroids

☒ Plot Inside Centroid Counts

☐ Plot All Centroid Counts

☒ Plot Contours

☐ Print All Centroids to -3 dBU

☐ Print Centroids

☒ Print TV Contour Table

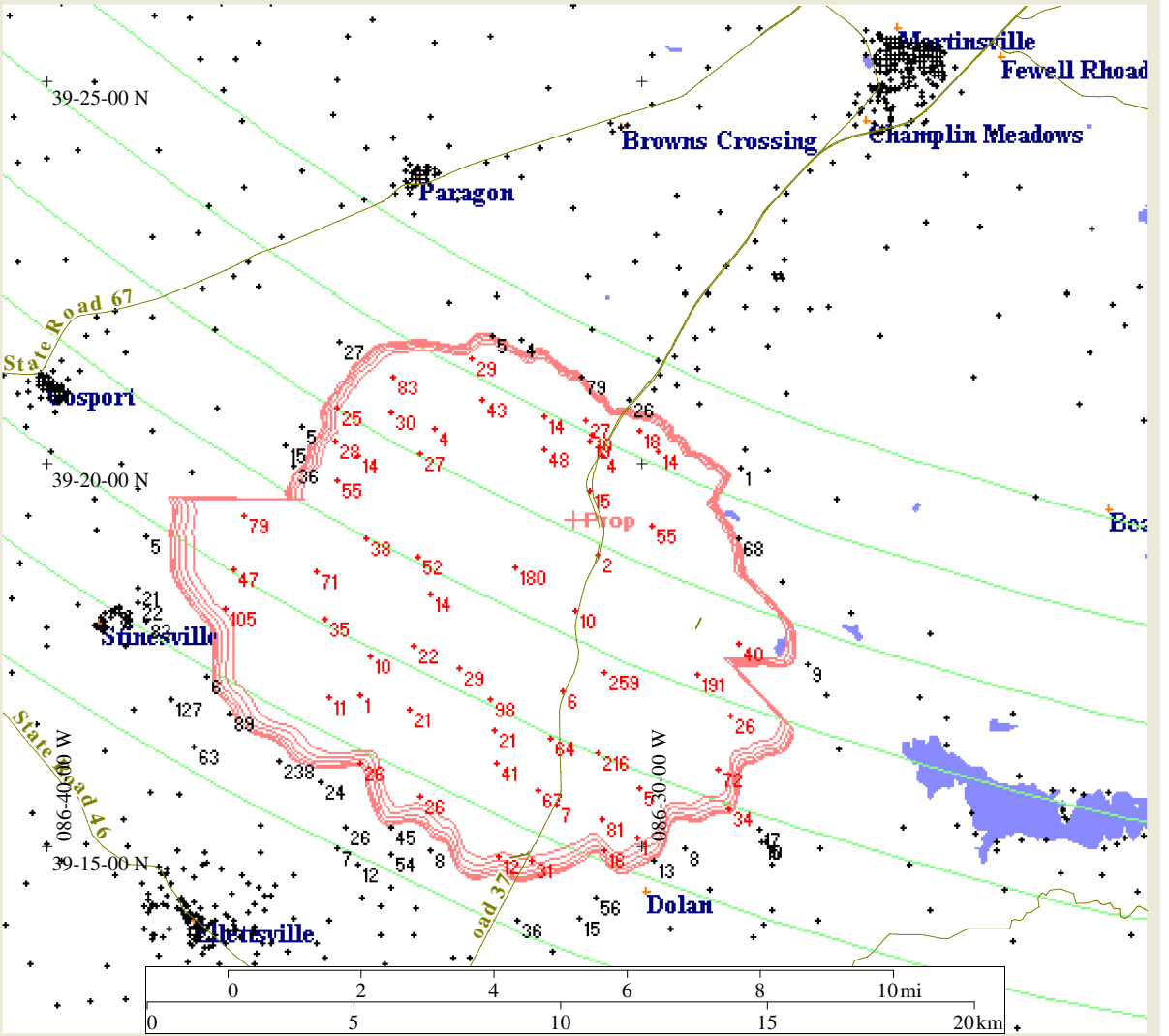
Comp

Coov F

Coov I

PrintText

Print Form



Channel Six TV Protection Study

WRTV 06 100.000kW ERP 531.0M COR AMSL 279.0M HAAT Lat. 395357 Lon. 861204  
Prop 215 15.500kW ERP 273.0M COR AMSL 58.4M HAAT Lat. 391917 Lon. 863108

Distance from TV to FM 69.7118km Azi 23.0degr Rev Azi 203.0 degr  
Cutoff radius for channel 215 is 180 km

The FM horizontal polarization component is 1.150 kW,  
and the area of just perceptible interference does not intersect a city of 50k,  
so the effective ERP is (Pv/40+Ph) 1.5375kW

The TV6 signal strength at the FM transmit site is 61.125 dBU  
For F centroids (centroids where the TV6 signal strength is less than 68 dBU and  
which are also +/-70 degrees from line from the FM station to the TV station)  
a 6 dB bonus is added to the allowable FM signal.

TV Contour	Undesired/Desired Ratio	Total	Directional Total
57	13.2	70.2	76.2
58	12.2	70.2	76.2
59	11.2	70.2	76.2
60	10.4	70.4	76.4
61	9.6	70.6	76.6
62	8.9	70.8	76.8
63	8.2	71.2	77.2

Population in affected area 2623

2000 Block Centroids used