

Geographic Coordinate System (WGS84)

Exhibit 13.2

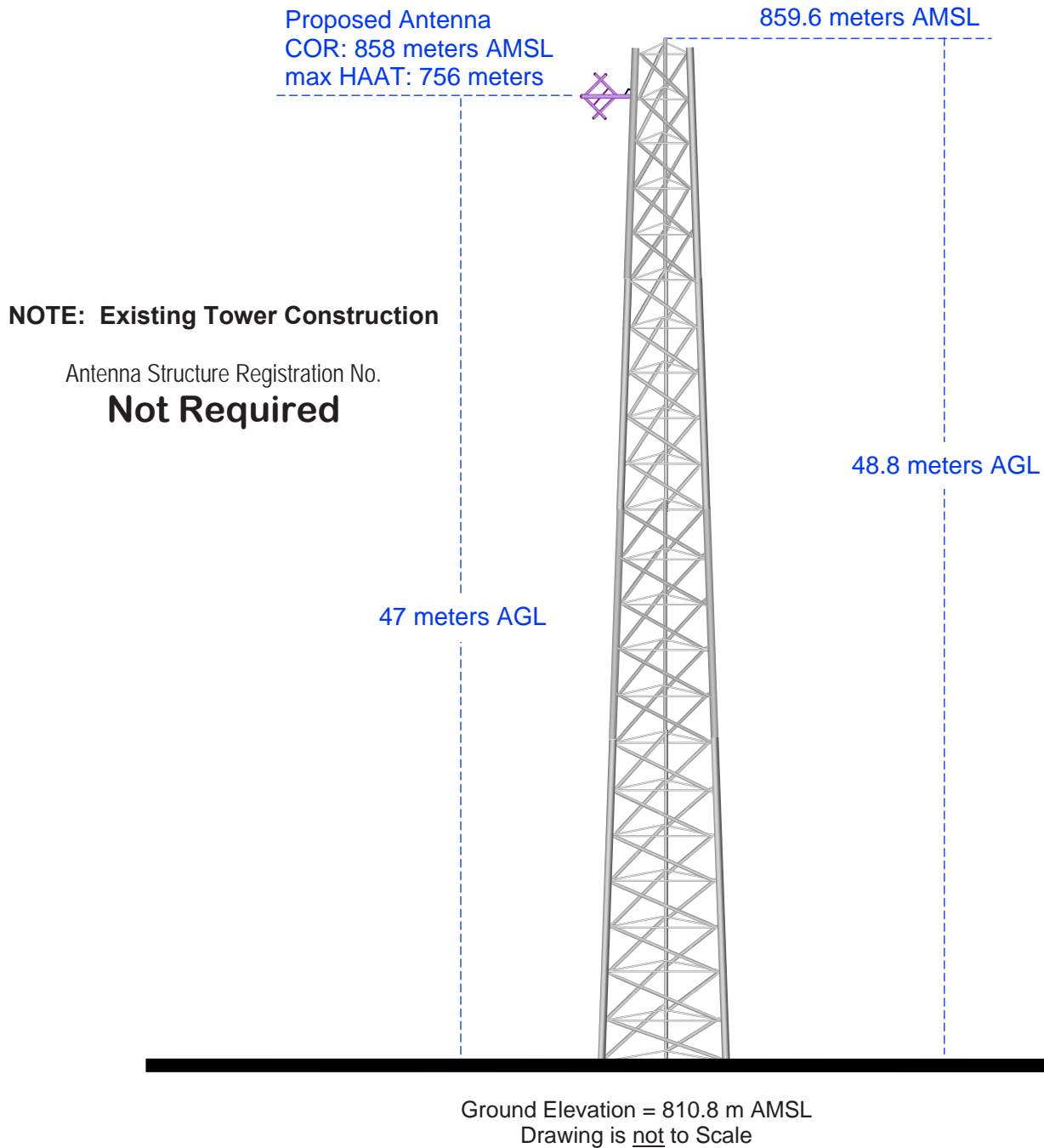
Vertical Plan of Antenna System

The site is located on top of Capital Peak
Thurston County, State of Washington.

Site Location (NAD 27)

NL: 46° 58' 24"

WL: 123° 08' 11"



MUNN-REESE, INC.

Broadcast Engineering Consultants
Coldwater, MI 49036

Exhibit 13.3 Present vs. Proposed Service Contour Study

CH266D.P
Olympia, WA
Proposed Operation
Facility ID: 150021
Latitude: 46-58-24 N
Longitude: 123-08-11 W
ERP: 0.01 kW
Channel: 266D
Frequency: 101.1 MHz
AMSL Height: 858.0 m
Horiz. Pattern: Omni

60 dBμ Contour
Total Population: 18,823
Total Area: 642 sq. km

K277BQ.L
Olympia, WA
BLFT20100816AAI
Facility ID: 150021
Latitude: 46-58-24 N
Longitude: 123-08-11 W
ERP: 0.01 kW
Channel: 277D
Frequency: 103.3 MHz
AMSL Height: 842.0 m
Horiz. Pattern: Directional

60 dBμ Contour
Total Population: 3,470
Total Area: 273 sq. km

Proposed 60 dBμ Contour

Present 60 dBμ Contour

+
CH266D.P
K277BQ.L

NGDC 30 SEC Terrain Database
U.S. Census 2010 PL Database

Terrain
-1 811 m

Scale 1:200,000
0 3 6 9 km

V-Soft Communications LLC ©



KGHO-LP.L
Hoquiam, WA
BLL20080331AGD
Facility ID: 134721
Latitude: 46-58-22 N
Longitude: 123-51-10 W
ERP: 0.10 kW
Channel: 253L1
Frequency: 98.5 MHz
AMSL Height: 50.0 m
Horiz. Pattern: Omni

CH266D.P
Olympia, WA
BLFT20100816AAI
Facility ID: 150021
Latitude: 46-58-24 N
Longitude: 123-08-11 W
ERP: 0.01 kW
Channel: 266D
Frequency: 101.1 MHz
AMSL Height: 858.0 m
Horiz. Pattern: Omni

Exhibit 13.4 Proposed vs Primary Service Contour Study

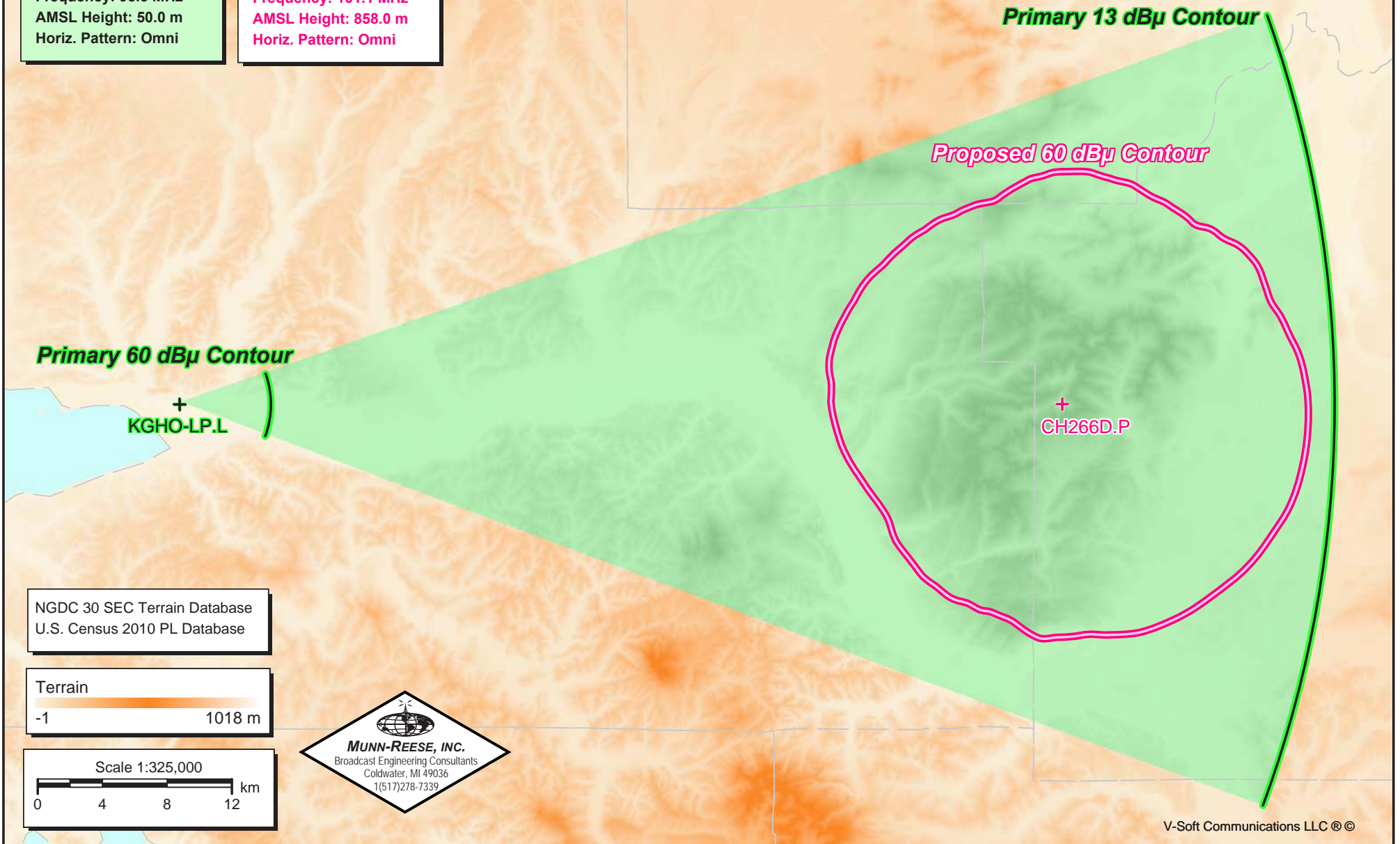


Exhibit 13.5

Tabulation of Proposed Allocation

Northwest Rock N Roll Preservation Society											
REFERENCE		CH# 266D - 101.1 MHz, Pwr= 0.01 kW, HAAT= 654.7 M, COR= 858 M								DISPLAY DATES	
46 58 24.0 N.		Average Protected F(50-50)= 14.33 km								DATA 03-14-13	
123 08 11.0 W.		Omni-directional								SEARCH 03-14-13	
CH CITY	CALL	TYPE ANT STATE	AZI <--	DIST FILE #	LAT LNG	PWR(kW) HAAT(M)	INT(km) COR(M)	PRO(km) LICENSEE	*IN* (Overlap in km)	*OUT*	
266C Portland	KXL-FM	LIC _C_ OR	169.0 349.3	164.95 BLH20100503ACD	45 30 58.0 122 43 59.0	100.000 502	191.6 594	87.5 Alpha Licensee, LIC	-41.2*<	24.3	
266D Raymond	K266BL	LIC DV WA	234.8 54.3	55.58 BLFT20100506ADI	46 41 00.0 123 43 54.0	0.040	13.8 17	4.3 Jodesha Broadcasting, Inc.	28.8	3.5	
264C Seattle	KKWF	LIC DC_ WA	55.6 236.5	105.68 BLH20081120AFT	47 30 14.0 121 58 29.0	68.000 707	13.5 940	94.9 Entercom Seattle License,	77.4	10.6	
265D Aberdeen	K265DP	LIC _C_ WA	264.6 84.2	45.26 BLFT20030912AAU	46 56 01.0 123 43 48.0	0.090 117	14.2 199	10.2 Pacific Lutheran University	17.0	13.0	
268C0 Seattle	KPLZ-FM	LIC _C_ WA	50.3 231.1	100.27 BLH20121220AAY	47 32 40.0 122 06 28.0	100.000 372	11.7 496	80.5 Fisher Broadcasting - Seat	73.9	19.5	
269D Centralia	K269FS	LIC _C_ WA	158.7 338.9	36.30 BLFT20120224ABS	46 40 08.0 122 57 50.0	0.205	1.0 179	13.7 Educational Media Foundati	20.4	22.4	
263D Aberdeen	1544257	APP _C_ WA	264.6 84.2	45.45 BNPFT20130305ACL	46 56 00.0 123 43 57.0	0.250	1.1 201	13.1 Sam-sno Educational Media	30.3	32.1	
269D Hoquiam	K269FT	LIC _C_ WA	264.4 84.0	45.61 BLFT20110201ABU	46 55 55.0 123 44 04.0	0.250 127	1.1 208	13.5 Mcc Radio, LIC	30.5	31.9	
267A Westport	KLWA	CP NCX WA	261.9 81.2	67.22 BMPED20111212ADO	46 53 04.0 124 00 44.0	4.000 49	21.1 81	14.2 Educational Media Foundati	32.2	31.1	
Proposed as Class B1 to Canada 970127-Limited to 6kw ERP and 100m HAAT or the equivalent. Accepted by Canada 970704 - limited to 6 kW ERP/100 m HAAT. See allotment record for original comment. Cleared at coordinates 46 53 24 NL, 124 06 06 WL.											
267A Westport	KLWA	LIC NCX WA	261.9 81.2	67.22 BMLED20091029AAN	46 53 04.0 124 00 44.0	1.200 -6	14.8 84	10.6 Educational Media Foundati	38.5	34.7	
263D Aberdeen	636182	APP _C_ WA	270.2 89.7	54.34 BNPFT20030312BDF	46 58 22.0 123 51 10.0	0.250 -23	1.1 37	7.1 Sam-sno Educational Media	39.0	47.0	
266A Coupeville	AL3880	VAC _C_ WA	12.3 192.7	151.07 RM11037	48 18 00.0 122 42 00.0	6.000 100	85.5 112	27.3 Dana J. Puopolo	51.4	71.6	
266A River Jordan	AL0857«	AL _C_ BC	338.8 158.2	170.72	48 24 06.0 123 58 20.0	6.000 100	114.7 326	38.0 112.0R		59.2M	
265D Astoria	K265CP	LIC ?HN OR	216.3 35.7	97.67 BLFT19880908TC	46 15 46.0 123 53 19.0	0.110 210	18.0 251	12.1 Gospel Echo, Inc.	66.0	64.1	
266C2 Leavenworth	KOH0-FM	LIC NC_ WA	69.6 251.5	210.10 BLH20010731ABM	47 36 07.0 120 30 32.0	0.950 623	126.3 1444	52.9 Icicle Broadcasting, Inc.	69.2	104.0	
268D Eufaula/Longview	K268BN	LIC DC_ WA	166.4 346.6	92.52 BLFT20091006ADQ	46 09 51.0 122 51 12.0	0.250 267	0.2 447	9.0 Washington Interstate Broa	77.7	83.3	

Terrain database is NGDC 30 SEC , R= 73.215 qualifying spacings or FCC minimum Spacings in KM, M= Margin in KM. Contour distances are on direct line to and from reference station. Reference zone= West Zone, Co to 3rd adjacent. All separation margins (if shown) include rounding. Ant Column: (D= DA Standard, Z= DA 73.215, N= Not DA 73.215, _= Omni), Polarization (C,H,V,E), Beamtilt(Y,N,X) ***affixed to 'IN' or 'OUT' values = site inside protected contour. « = Station meets FCC minimum distance spacing for its class. < = Contour Overlap

Yellow Highlighted Text denotes supplemental contour protection studies toward K266BL - Raymond, WA as included in **Exhibit 13.6**.

Exhibit 13.6

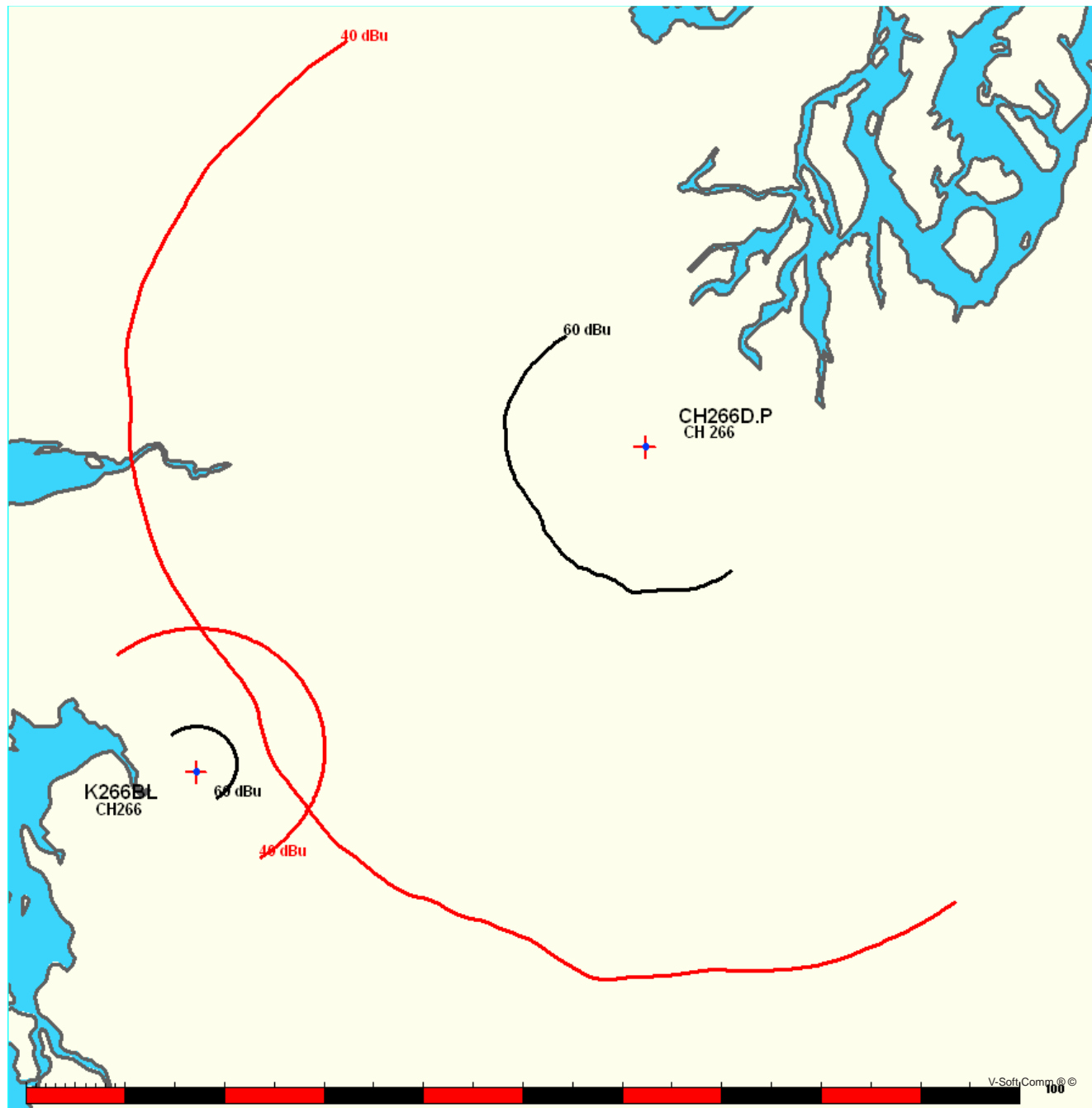
Contour Protection Studies Toward K266BL - Raymond, WA

Northwest Rock N Roll Preservation Society

FMCommander Single Allocation Study - 03-14-2013 - NGDC 30 SEC
CH266D.P's Overlaps (In= 28.78 km, Out= 3.45 km)

CH266D.P CH 266 D
Lat= 46 58 24.0, Lng= 123 08 11.0
0.01 kW 654.7 M HAAT, 858 M COR
Prot.= 60 dBu, Intef.= 40 dBu

K266BL CH 266 D DA BLFT20100506ADI
Lat= 46 41 00.0, Lng= 123 43 54.0
0.04 kW 0 M HAAT, 17 M COR
Prot.= 60 dBu, Intef.= 40 dBu



MUNN-REESE, INC.

Broadcast Engineering Consultants
COLDWATER, MI 49036

Exhibit 13.6

Contour Protection Studies Toward K266BL - Raymond, WA

03-14-2013

Terrain Data: NGDC 30 SEC

FMOver Analysis

CH266D.P

K266BL BLFT20100506ADI

Channel = 266D
Max ERP = 0.01 kW
RCAMSL = 858 M
N. Lat. 46 58 24.0
W. Lng. 123 08 11.0
Protected
60 dBu

Channel = 266D
Max ERP = 0.04 kW
RCAMSL = 17 M
N. Lat. 46 41 00.0
W. Lng. 123 43 54.0
Interfering
40 dBu

Azimuth (degrees)	ERP (kW)	HAAT (m)	Dist (km)	Azimuth (degrees)	ERP (kW)	HAAT (m)	Dist (km)	Actual (dBu)	IX (km)
192.0	000.0100	0614.6	013.9	066.1	000.0329	-0108.6	046.4	21.92	
193.0	000.0100	0605.6	013.8	065.8	000.0330	-0110.3	046.2	21.96	
194.0	000.0100	0599.7	013.7	065.5	000.0330	-0111.4	046.1	22.00	
195.0	000.0100	0596.3	013.7	065.3	000.0331	-0112.2	045.9	22.05	
196.0	000.0100	0594.5	013.6	065.1	000.0331	-0112.6	045.8	22.10	
197.0	000.0100	0593.2	013.6	064.9	000.0332	-0112.9	045.6	22.15	
198.0	000.0100	0590.6	013.6	064.6	000.0333	-0112.8	045.5	22.19	
199.0	000.0100	0589.0	013.6	064.4	000.0333	-0112.5	045.3	22.24	
200.0	000.0100	0591.0	013.6	064.2	000.0334	-0112.0	045.1	22.30	
201.0	000.0100	0595.4	013.6	064.1	000.0334	-0111.6	044.9	22.35	
202.0	000.0100	0598.3	013.7	063.9	000.0335	-0111.0	044.7	22.41	
203.0	000.0100	0597.5	013.7	063.6	000.0335	-0110.2	044.6	22.46	
204.0	000.0100	0594.8	013.6	063.4	000.0336	-0109.2	044.4	22.50	
205.0	000.0100	0592.9	013.6	063.1	000.0337	-0108.2	044.3	22.54	
206.0	000.0100	0593.6	013.6	062.9	000.0337	-0107.4	044.2	22.59	
207.0	000.0100	0597.4	013.7	062.7	000.0338	-0106.7	044.0	22.65	
208.0	000.0100	0602.5	013.7	062.5	000.0338	-0106.1	043.8	22.71	
209.0	000.0100	0606.4	013.8	062.2	000.0339	-0105.5	043.6	22.76	
210.0	000.0100	0608.3	013.8	062.0	000.0340	-0105.1	043.5	22.81	
211.0	000.0100	0608.1	013.8	061.7	000.0340	-0104.7	043.3	22.86	
212.0	000.0100	0606.2	013.8	061.4	000.0341	-0104.3	043.2	22.89	
213.0	000.0100	0603.3	013.7	061.1	000.0342	-0103.8	043.2	22.93	
214.0	000.0100	0600.8	013.7	060.8	000.0343	-0103.2	043.1	22.96	
215.0	000.0100	0599.6	013.7	060.5	000.0344	-0102.5	043.0	23.00	
216.0	000.0100	0599.3	013.7	060.3	000.0345	-0101.6	042.9	23.04	
217.0	000.0100	0599.7	013.7	060.0	000.0345	-0100.5	042.8	23.08	
218.0	000.0100	0600.1	013.7	059.7	000.0346	-0099.2	042.7	23.11	
219.0	000.0100	0599.3	013.7	059.4	000.0346	-0097.6	042.6	23.14	
220.0	000.0100	0596.5	013.7	059.0	000.0347	-0095.6	042.6	23.16	
221.0	000.0100	0592.4	013.6	058.7	000.0348	-0093.6	042.5	23.18	
222.0	000.0100	0588.2	013.6	058.4	000.0348	-0091.5	042.5	23.19	
223.0	000.0100	0584.9	013.5	058.1	000.0349	-0089.5	042.5	23.21	
224.0	000.0100	0581.9	013.5	057.8	000.0350	-0087.6	042.5	23.22	
225.0	000.0100	0579.1	013.4	057.4	000.0350	-0086.0	042.4	23.24	

Exhibit 13.6

Contour Protection Studies Toward K266BL - Raymond, WA

Azimuth (degrees)	ERP (kW)	HAAT (m)	Dist (km)	Azimuth (degrees)	ERP (kW)	HAAT (m)	Dist (km)	Actual (dBu)
226.0	000.0100	0576.9	013.4	057.1	000.0351	-0084.8	042.4	23.25
227.0	000.0100	0575.2	013.4	056.8	000.0352	-0083.7	042.4	23.26
228.0	000.0100	0573.8	013.4	056.5	000.0352	-0082.9	042.4	23.28
229.0	000.0100	0572.3	013.4	056.2	000.0353	-0082.4	042.4	23.29
230.0	000.0100	0570.4	013.3	055.9	000.0354	-0082.1	042.4	23.30
231.0	000.0100	0567.5	013.3	055.5	000.0354	-0082.0	042.4	23.30
232.0	000.0100	0563.3	013.2	055.2	000.0355	-0082.3	042.4	23.30
233.0	000.0100	0557.1	013.2	054.9	000.0356	-0082.8	042.5	23.29
234.0	000.0100	0550.4	013.1	054.6	000.0356	-0083.5	042.6	23.27
235.0	000.0100	0543.7	013.0	054.3	000.0357	-0084.4	042.6	23.26
236.0	000.0100	0537.8	012.9	054.0	000.0357	-0085.3	042.7	23.25
237.0	000.0100	0533.7	012.9	053.7	000.0358	-0086.3	042.8	23.24
238.0	000.0100	0531.6	012.9	053.4	000.0359	-0087.5	042.8	23.24
239.0	000.0100	0531.3	012.9	053.1	000.0359	-0088.6	042.8	23.24
240.0	000.0100	0532.3	012.9	052.8	000.0360	-0089.7	042.8	23.24
241.0	000.0100	0534.2	012.9	052.5	000.0360	-0090.8	042.8	23.24
242.0	000.0100	0536.7	012.9	052.2	000.0361	-0091.9	042.9	23.25
243.0	000.0100	0539.5	013.0	051.9	000.0362	-0093.1	042.9	23.25
244.0	000.0100	0542.8	013.0	051.6	000.0362	-0094.3	042.9	23.26
245.0	000.0100	0546.6	013.0	051.3	000.0363	-0095.4	042.9	23.27
246.0	000.0100	0550.7	013.1	051.0	000.0364	-0096.5	042.9	23.27
247.0	000.0100	0554.8	013.1	050.6	000.0364	-0097.8	042.9	23.27
248.0	000.0100	0558.3	013.2	050.3	000.0365	-0098.9	042.9	23.28
249.0	000.0100	0562.0	013.2	050.0	000.0366	-0100.0	043.0	23.28
250.0	000.0100	0566.3	013.3	049.7	000.0366	-0101.1	043.0	23.27
251.0	000.0100	0570.9	013.3	049.4	000.0366	-0101.9	043.0	23.27
252.0	000.0100	0576.2	013.4	049.1	000.0367	-0102.6	043.0	23.27
253.0	000.0100	0581.8	013.5	048.8	000.0367	-0102.9	043.1	23.27
254.0	000.0100	0587.2	013.5	048.4	000.0368	-0103.0	043.1	23.26
255.0	000.0100	0592.1	013.6	048.1	000.0368	-0102.9	043.1	23.25
256.0	000.0100	0597.0	013.7	047.8	000.0369	-0102.9	043.2	23.24
257.0	000.0100	0601.9	013.7	047.5	000.0369	-0102.6	043.3	23.23
258.0	000.0100	0606.4	013.8	047.2	000.0370	-0102.3	043.3	23.22
259.0	000.0100	0610.8	013.8	046.9	000.0370	-0101.8	043.4	23.20
260.0	000.0100	0615.0	013.9	046.6	000.0371	-0101.3	043.5	23.18
261.0	000.0100	0618.5	013.9	046.3	000.0371	-0100.8	043.6	23.16
262.0	000.0100	0621.4	014.0	046.0	000.0371	-0100.5	043.7	23.13
263.0	000.0100	0625.1	014.0	045.7	000.0372	-0100.2	043.8	23.11
264.0	000.0100	0628.5	014.0	045.4	000.0372	-0099.8	043.9	23.08
265.0	000.0100	0632.0	014.1	045.1	000.0373	-0099.3	044.1	23.05
266.0	000.0100	0635.8	014.1	044.8	000.0373	-0098.8	044.2	23.02
267.0	000.0100	0639.7	014.2	044.6	000.0374	-0098.2	044.3	22.99
268.0	000.0100	0643.1	014.2	044.3	000.0374	-0097.6	044.5	22.96
269.0	000.0100	0646.4	014.2	044.0	000.0374	-0096.9	044.6	22.93
270.0	000.0100	0649.6	014.3	043.8	000.0375	-0096.1	044.8	22.89
271.0	000.0100	0652.3	014.3	043.5	000.0375	-0095.3	044.9	22.85

Exhibit 13.6

Contour Protection Studies Toward K266BL - Raymond, WA

03-14-2013

Terrain Data: NGDC 30 SEC

FMOver Analysis

K266BL BLFT20100506ADI

CH266D.P

Channel = 266D

Max ERP = 0.04 kW

RCAMSL = 17 M

N. Lat. 46 41 00.0

W. Lng. 123 43 54.0

Protected

60 dBu

Channel = 266D

Max ERP = 0.01 kW

RCAMSL = 858 M

N. Lat. 46 58 24.0

W. Lng. 123 08 11.0

Interfering

40 dBu

Azimuth (degrees)	ERP (kW)	HAAT (m)	Dist (km)	Azimuth (degrees)	ERP (kW)	HAAT (m)	Dist (km)	Actual (dBu)	IX (km)
009.0	000.0399	-0084.3	004.4	238.2	000.0100	0531.4	052.6	38.06	
010.0	000.0399	-0085.0	004.4	238.2	000.0100	0531.4	052.5	38.08	
011.0	000.0399	-0087.1	004.4	238.1	000.0100	0531.5	052.4	38.10	
012.0	000.0399	-0089.9	004.4	238.0	000.0100	0531.6	052.4	38.12	
013.0	000.0398	-0092.8	004.4	238.0	000.0100	0531.7	052.3	38.14	
014.0	000.0398	-0093.8	004.4	237.9	000.0100	0531.7	052.3	38.16	
015.0	000.0398	-0092.6	004.4	237.8	000.0100	0531.8	052.2	38.18	
016.0	000.0397	-0092.3	004.4	237.8	000.0100	0531.9	052.2	38.20	
017.0	000.0397	-0093.6	004.4	237.7	000.0100	0532.0	052.1	38.22	
018.0	000.0397	-0095.2	004.4	237.7	000.0100	0532.1	052.1	38.24	
019.0	000.0396	-0094.4	004.4	237.6	000.0100	0532.3	052.0	38.26	
020.0	000.0396	-0091.6	004.4	237.5	000.0100	0532.4	052.0	38.28	
021.0	000.0395	-0089.8	004.4	237.4	000.0100	0532.6	051.9	38.30	
022.0	000.0395	-0090.6	004.4	237.4	000.0100	0532.7	051.9	38.32	
023.0	000.0394	-0092.7	004.4	237.3	000.0100	0532.9	051.9	38.34	
024.0	000.0393	-0095.1	004.4	237.2	000.0100	0533.1	051.8	38.36	
025.0	000.0393	-0097.9	004.4	237.2	000.0100	0533.3	051.8	38.37	
026.0	000.0392	-0101.1	004.4	237.1	000.0100	0533.5	051.7	38.39	
027.0	000.0392	-0103.5	004.4	237.0	000.0100	0533.7	051.7	38.41	
028.0	000.0391	-0105.0	004.4	236.9	000.0100	0533.9	051.7	38.43	
029.0	000.0390	-0106.7	004.4	236.9	000.0100	0534.2	051.6	38.44	
030.0	000.0390	-0107.6	004.4	236.8	000.0100	0534.4	051.6	38.46	
031.0	000.0389	-0107.6	004.4	236.7	000.0100	0534.7	051.6	38.48	
032.0	000.0388	-0108.1	004.4	236.6	000.0100	0535.0	051.5	38.49	
033.0	000.0387	-0108.5	004.4	236.5	000.0100	0535.3	051.5	38.51	
034.0	000.0386	-0107.9	004.4	236.5	000.0100	0535.7	051.5	38.53	
035.0	000.0385	-0107.3	004.4	236.4	000.0100	0536.0	051.5	38.54	
036.0	000.0384	-0104.9	004.4	236.3	000.0100	0536.4	051.4	38.56	
037.0	000.0383	-0099.2	004.4	236.2	000.0100	0536.7	051.4	38.58	
038.0	000.0382	-0092.5	004.4	236.1	000.0100	0537.1	051.4	38.59	
039.0	000.0381	-0088.5	004.4	236.1	000.0100	0537.5	051.4	38.61	
040.0	000.0380	-0087.4	004.4	236.0	000.0100	0537.9	051.4	38.62	
041.0	000.0379	-0088.3	004.4	235.9	000.0100	0538.4	051.3	38.64	

MUNN-REESE, INC.

Broadcast Engineering Consultants

COLDWATER, MI 49036

Exhibit 13.6

Contour Protection Studies Toward K266BL - Raymond, WA

Azimuth (degrees)	ERP (kW)	HAAT (m)	Dist (km)	Azimuth (degrees)	ERP (kW)	HAAT (m)	Dist (km)	Actual (dBu)
042.0	000.0377	-0090.6	004.4	235.8	000.0100	0538.8	051.3	38.65
043.0	000.0376	-0093.7	004.4	235.7	000.0100	0539.3	051.3	38.67
044.0	000.0374	-0096.8	004.4	235.6	000.0100	0539.8	051.3	38.68
045.0	000.0373	-0099.1	004.4	235.6	000.0100	0540.3	051.3	38.69
046.0	000.0371	-0100.5	004.4	235.5	000.0100	0540.8	051.3	38.71
047.0	000.0370	-0102.0	004.4	235.4	000.0100	0541.3	051.3	38.72
048.0	000.0368	-0102.9	004.4	235.3	000.0100	0541.8	051.3	38.73
049.0	000.0367	-0102.7	004.3	235.2	000.0100	0542.3	051.3	38.74
050.0	000.0366	-0100.1	004.3	235.1	000.0100	0542.9	051.3	38.75
051.0	000.0364	-0096.4	004.3	235.0	000.0100	0543.4	051.3	38.76
052.0	000.0361	-0092.7	004.3	235.0	000.0100	0544.0	051.3	38.77
053.0	000.0359	-0088.9	004.3	234.9	000.0100	0544.5	051.3	38.78
054.0	000.0357	-0085.3	004.3	234.8	000.0100	0545.1	051.3	38.79
055.0	000.0355	-0082.6	004.3	234.7	000.0100	0545.7	051.3	38.80
056.0	000.0353	-0082.2	004.3	234.6	000.0100	0546.2	051.3	38.81
057.0	000.0351	-0084.3	004.3	234.5	000.0100	0546.8	051.3	38.82
058.0	000.0349	-0089.0	004.3	234.5	000.0100	0547.3	051.3	38.82
059.0	000.0347	-0095.3	004.3	234.4	000.0100	0547.8	051.3	38.83
060.0	000.0345	-0100.7	004.3	234.3	000.0100	0548.4	051.3	38.84
061.0	000.0342	-0103.6	004.3	234.2	000.0100	0548.9	051.3	38.84
062.0	000.0340	-0105.1	004.3	234.1	000.0100	0549.4	051.4	38.84
063.0	000.0337	-0107.8	004.3	234.1	000.0100	0550.0	051.4	38.85
064.0	000.0334	-0111.4	004.2	234.0	000.0100	0550.5	051.4	38.85
065.0	000.0332	-0112.8	004.2	233.9	000.0100	0551.1	051.4	38.85
066.0	000.0329	-0109.0	004.2	233.8	000.0100	0551.7	051.5	38.85
067.0	000.0326	-0101.0	004.2	233.7	000.0100	0552.2	051.5	38.86
068.0	000.0324	-0094.4	004.2	233.7	000.0100	0552.7	051.5	38.86
069.0	000.0321	-0091.2	004.2	233.6	000.0100	0553.2	051.5	38.85
070.0	000.0318	-0091.3	004.2	233.5	000.0100	0553.7	051.6	38.85
071.0	000.0315	-0092.9	004.2	233.4	000.0100	0554.2	051.6	38.85
072.0	000.0312	-0094.6	004.2	233.4	000.0100	0554.7	051.6	38.85
073.0	000.0308	-0095.6	004.2	233.3	000.0100	0555.2	051.7	38.84
074.0	000.0305	-0097.9	004.1	233.2	000.0100	0555.7	051.7	38.84
075.0	000.0302	-0101.3	004.1	233.1	000.0100	0556.1	051.7	38.84
076.0	000.0298	-0104.5	004.1	233.1	000.0100	0556.6	051.8	38.83
077.0	000.0295	-0104.3	004.1	233.0	000.0100	0557.0	051.8	38.82
078.0	000.0292	-0101.3	004.1	232.9	000.0100	0557.5	051.9	38.82
079.0	000.0289	-0096.4	004.1	232.9	000.0100	0557.9	051.9	38.81
080.0	000.0286	-0091.2	004.1	232.8	000.0100	0558.3	051.9	38.80
081.0	000.0282	-0083.8	004.1	232.8	000.0100	0558.7	052.0	38.79
082.0	000.0278	-0076.1	004.1	232.7	000.0100	0559.0	052.0	38.78
083.0	000.0275	-0070.1	004.0	232.6	000.0100	0559.4	052.1	38.77
084.0	000.0271	-0066.5	004.0	232.6	000.0100	0559.8	052.1	38.76
085.0	000.0268	-0063.5	004.0	232.5	000.0100	0560.2	052.2	38.75
086.0	000.0265	-0060.5	004.0	232.5	000.0100	0560.5	052.2	38.74
087.0	000.0261	-0060.4	004.0	232.4	000.0100	0560.9	052.3	38.73
088.0	000.0258	-0061.5	004.0	232.4	000.0100	0561.2	052.3	38.72