

TECHNICAL EXHIBIT
APPLICATION FOR DTV MAXIMIZATION
STATION WALB-DT (FACILITY ID 70713)
ALBANY, GEORGIA
CH 10 22 KW 297 M

Technical Narrative

This Technical Exhibit supports an application for digital television (DTV) station WALB-DT to maximize its post-transition facility. This application requests a construction permit (CP) for a digital television operation on channel 10, using its licensed, analog non-directional antenna.

Proposed Facilities

Station WALB-DT proposes to operate DTV channel 8 with a non-directional effective radiated power (ERP) of 22 kilowatts and antenna height above average terrain (HAAT) of 297 meters. The transmitter site coordinates are:

31° 19' 52" North Latitude
83° 51' 43" West Longitude

A sketch of antenna and pertinent elevations are included as Figure 1. Figure 2 is a map showing the DTV predicted coverage contours. The predicted 43 dBu contour will encompass all of Albany. The Albany city limits were derived from information contained in the 2000 U.S. Census of Population and Housing.

Population Served

The herein proposed WALB-DT “maximized” facility is predicted to serve 716,300 persons, post-transition, based upon the 2000 Census. WALB-DT’s associated Appendix B facility is predicted to serve 626,610 persons. Therefore, the herein proposed WALB-DT facility would serve more than 100% of WALB-DT’s Appendix B population.

Allocation Considerations

The proposed WALB-DT operation meets the FCC’s 0.5% post-transition interference standards to pertinent Class A and DTV facilities using the procedures outlined in the FCC’s OET-69 Bulletin and a standard 2 kilometer cell size and 1 kilometer terrain distance increment.

SPECIAL CONSIDERATION: The undersigned believes that consideration of the WALB-DT post-transition authorization¹ should not be included in the “before” and “after” analysis of the OET-69 program as it limits the amount of new interference that the proposal can cause to other stations over the Appendix B allotment. If necessary, a waiver of Section 73.616 is respectfully requested.

Radiofrequency Electromagnetic Field Exposure

The proposed WALB-DT facilities were evaluated in terms of potential radio frequency (RF) energy exposure at ground level to workers and the general public. The radiation center for the proposed DTV antenna is located 290 meters above ground level with an ERP of 22 kW. A conservative relative field value of 1.0 was assumed for the calculation. The calculated power density at a point 2 meters above ground level will not exceed 0.009

¹ See BPCDT-20080509AAP

mW/cm². This is less than 5% of the FCC's recommended limit of 0.2 mW/cm² for channel 10 for an "uncontrolled" environment.

Access to the transmitting site will be restricted and appropriately marked with warning signs. As this is a multi-user site an agreement with the stations will control site access. In the event that workers or other authorized personnel enter restricted areas or climb the tower, appropriate measures will be taken to assure worker safety with respect to radio frequency radiation exposure. Such measures include reducing the average exposure by spreading out the work over a longer period of time, wearing "accepted" RFR protective clothing and/or RFR exposure monitors or scheduling work when the stations are at reduced power or shut down. The proposed WALB-DT operation appears to be otherwise categorically excluded from environmental processing.

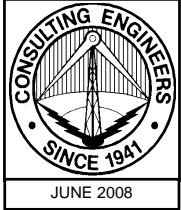
It is noted that this statement only addresses the potential for radiofrequency electromagnetic field exposure. All other aspects of the environmental processing analysis will be or already have been provided to the FCC by the tower owner.



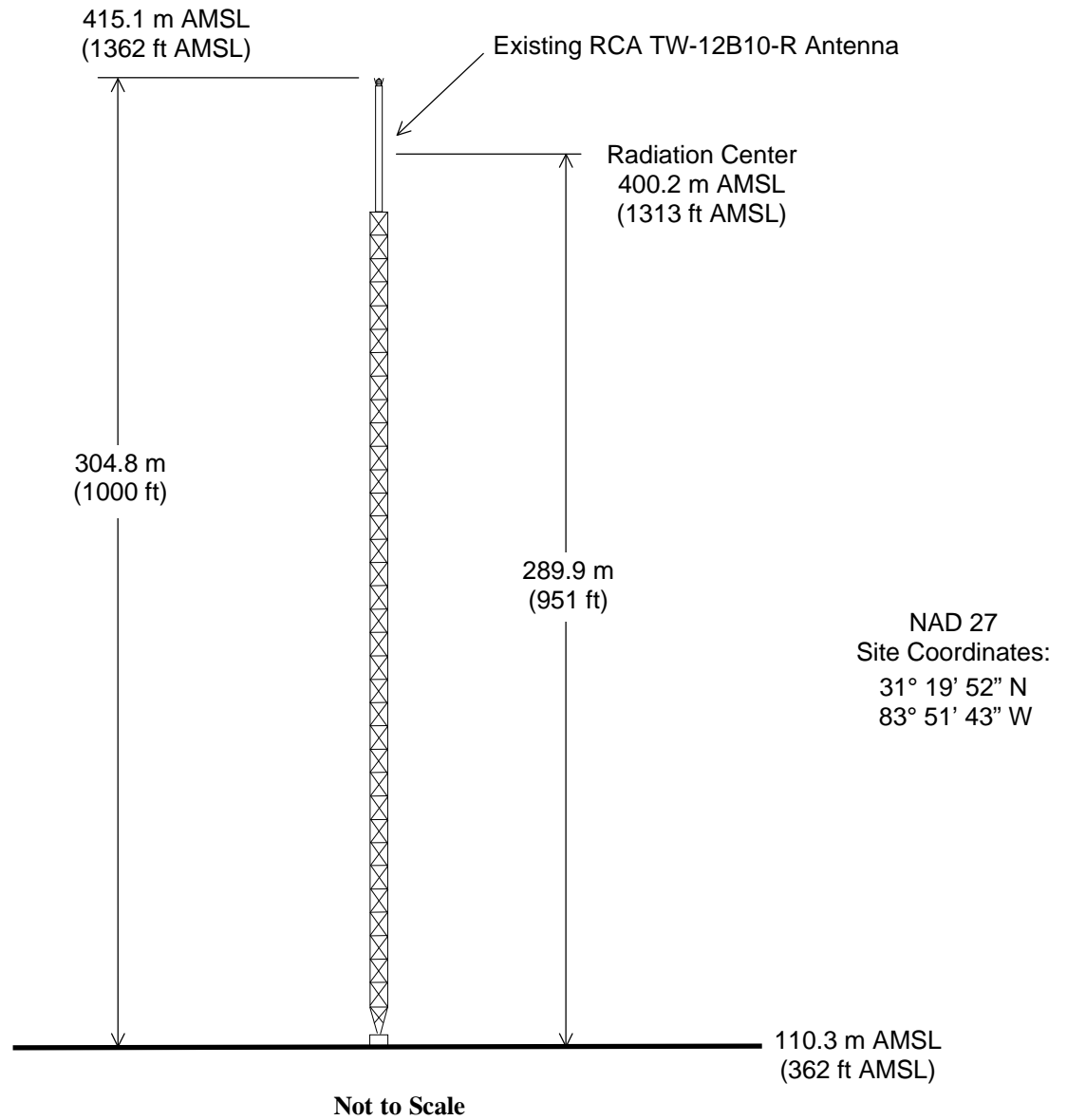
Jonathan N. Edwards
du Treil, Lundin & Rackley, Inc.
201 Fletcher Avenue
Sarasota, Florida 34237
(941) 329-6000
JON@DLR.COM

June 17, 2008

Figure 1



Registration No. 1255221

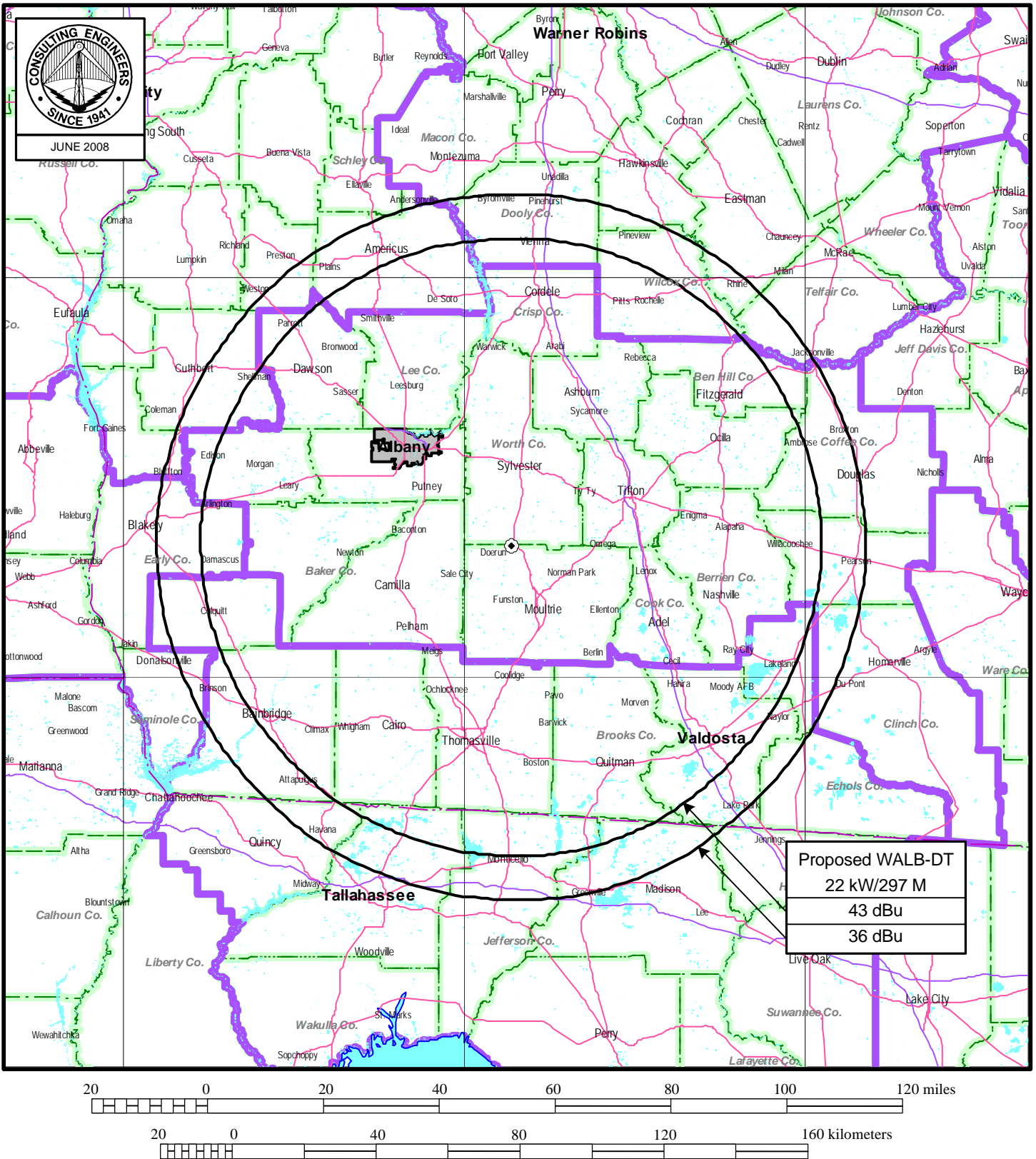


ANTENNA AND SUPPORTING STRUCTURE

STATION WALB-DT
ALBANY, GEORGIA
CH 10 22 KW 297 M

du Treil, Lundin & Rackley, Inc. Sarasota, Florida

Figure 2



PREDICTED COVERAGE CONTOURS

STATION WALB-DT

ALBANY, GEORGIA

CH 10 22 kW 297 M

du Treil, Lundin & Rackley, Inc Sarasota, Florida