

TEXAS REGISTERED ENGINEERING FIRM F-2011

BEFCO ENGINEERING, INC.  
Consulting Engineering/Land Surveying  
P.O. BOX 615 485 NORTH JEFFERSON  
LA GRANGE, TEXAS 78945-0615  
979 / 968-6474 FAX 979 / 968-3056  
E-mail: kevin.befco@cmaaccess.com  
SURVEYING FIRM NO. 10001700

EXHIBIT 9B

October 17, 2017

Mr. John Askins  
TEXAS INDEPENDENT MEDIA, INC.  
P.O. Box 190  
La Grange, Texas 78945

Facility ID: 172596  
Call Sign: KTIM

Dear Mr. Askins;

As requested, our field survey crew was dispatched on October 13, 2017 to the La Grange, Texas, AMERICAN TOWER CORP. Site No. 410137 to verify the direction of your new directional antenna system, installed upon the tower. This new antenna system replaced a damaged unit that was installed in August of this year.

The directional antenna system is a single unit mounted on the above tower, made up of four horizontal antenna shafts approximately 3.5 feet long.

Using Trimble R10 GPS receivers, we set horizontal control points on site based on Texas State Plane Coordinate System - South Central Zone - NAD 83(2011) datum. We then occupied these control points with our Trimble S6 robotic total station and obtained multiple reflectorless angle and distance measurements on both ends of each of the four antenna shafts. Based on these measurements, Grid Azimuths were calculated for each of the four antenna shafts and converted to **TRUE AZIMUTHS** by applying a convergence factor of +01 degree 02 minutes 20 seconds.

The average **TRUE AZIMUTH** of the four directional antenna shafts, calculated from these measurements, is **129 degrees 54 minutes**.

Please let me know if there are any questions or if you need more detailed information regarding the survey data.

Sincerely;

---

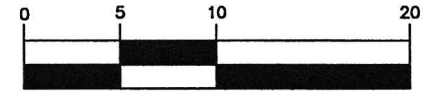
Kevin Von Minden, RPLS #4438  
BEFCO ENGINEERING, INC.

"GRID" azimuths shown are based on the Texas State Plane Coordinate System - South Central Zone - NAD 83 (2011).

"TRUE" azimuths shown are calculated using a convergence of +01°02'20".

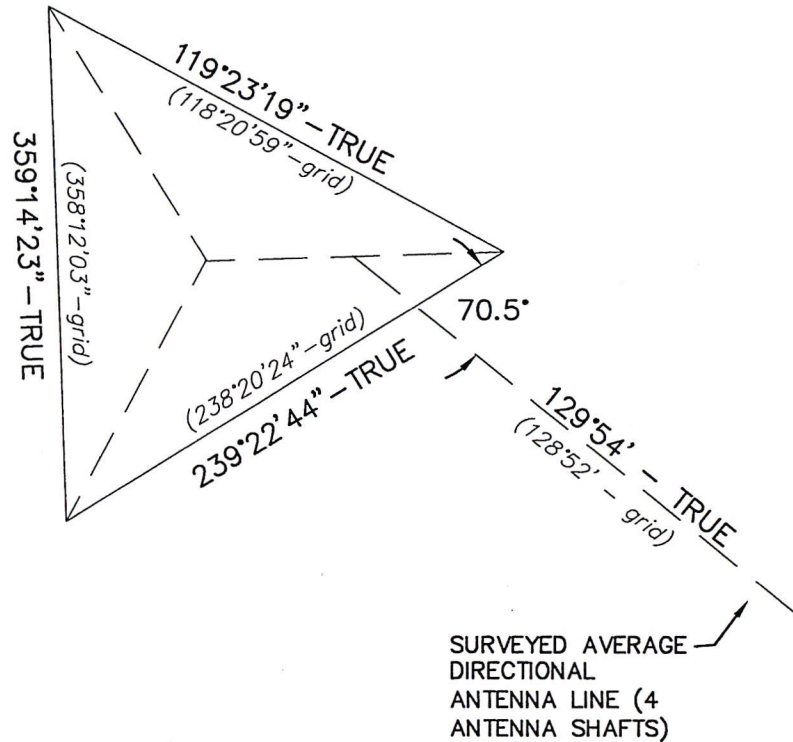


## GRAPHIC SCALE



( IN FEET )  
1 inch = 10 ft.

AMERICAN TOWER CORP.  
La Grange, Texas  
Site No. 410137



TEXAS INDEPENDENT MEDIA, INC.  
La Grange, Texas

Facility ID: 172596  
Call Sign: KTIM

October 13, 2017



### BEFCO ENGINEERING, INC.

Engineering Firm No. F-2011  
Surveying Firm No. 10001700  
P. O. Box 615  
LaGrange, Texas 78945  
(979) 968-6474