

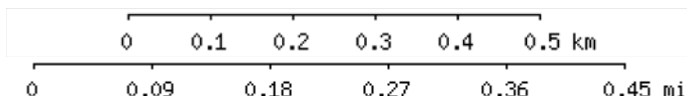
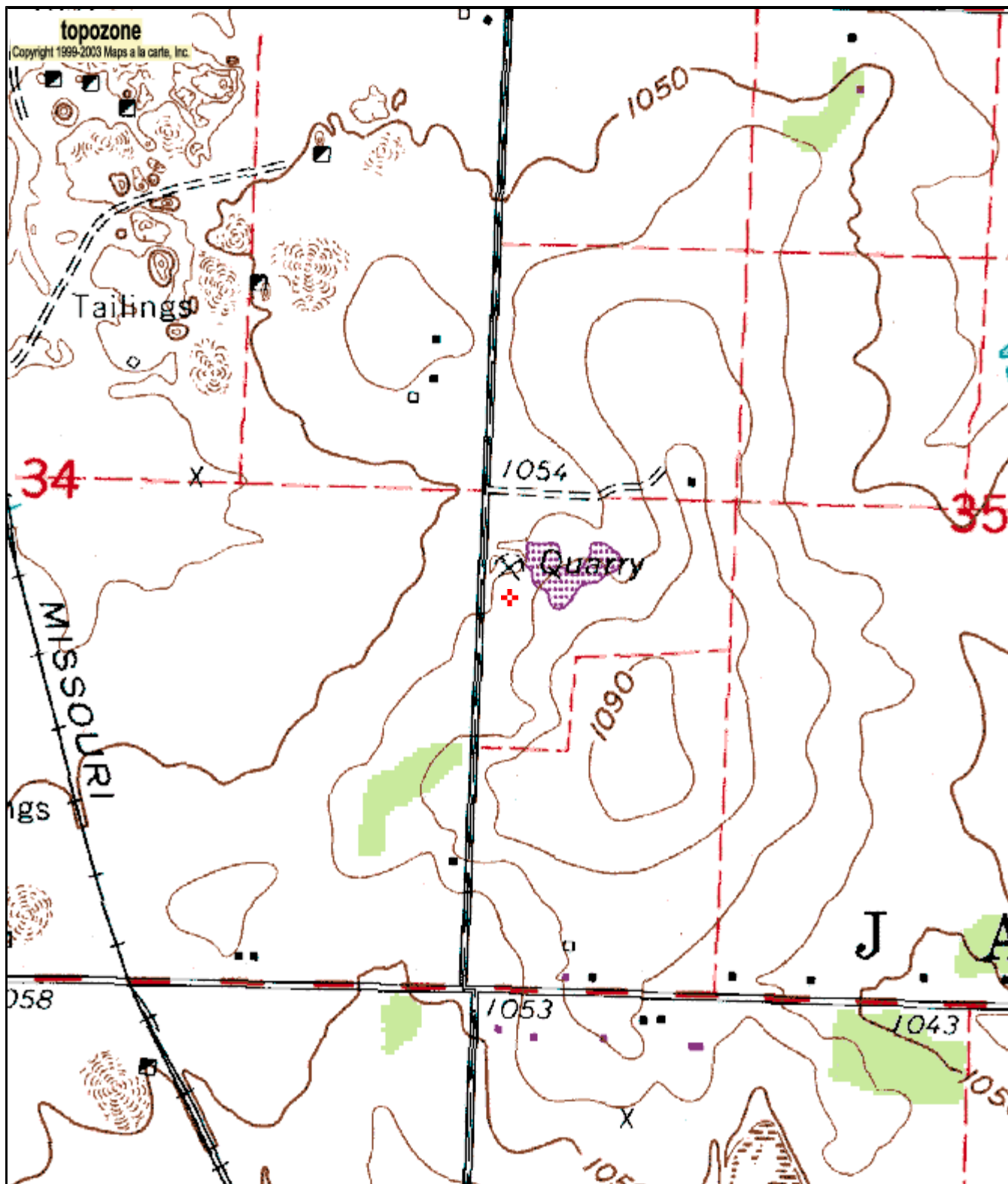
EXHIBIT 12

Waiver Request of Section 74.1204
K207BT Joplin, MO 250 Watts ERP
Minor Channel Change to 206 - January 2008
Calvary Chapel of Twin Falls, Inc.

The proposed site is contained entirely inside the service contour of second-adjacent FM Station KXMS Joplin, MO

KXMS

The proposed site is contained entirely inside the service contour of second-adjacent FM Station KXMS, 204C3, 10kW, Joplin, MO. The level of least arriving protected F(50,50) signal at the proposed transmitter site is 85.9-dBu. Using the Undesired-to-Desired method for calculating proposed interference, the interfering contour with respect to KXMS is 125.9-dBu (free-space contour method employed). The interfering signal would, in the worst case at the maximum radial, extend 57 meters from the center of radiation, presently licensed at 76 meters AGL. There is no proposal to remove the cable, only change the channel and antenna. Attached is a section of the USGS Joplin East (MO, KS) Quadrangle showing that this tower is not located in a highly populated area and there are no residences, businesses or major roadways that are located within the interfering contour, which does not touch the ground. Calvary Chapel of Twin Falls, Inc. respectfully requests a waiver of the FM translator contour overlap regulations with respect to second-adjacent channel KXMS.



37° 06' 11"N, 94° 24' 11"W (NAD27)
USGS Joplin East (MO) Quadrangle
 Projection is UTM Zone 15 NAD83 Datum

M=2.742
 G=-0.847