

Table 1

K284AH Minor Change to Licensed Facility December 14, 2009
Channel Study

Chan	Class	Call Letters	Type	Status	City	State	Country	Owner	Distance (km)	Bearing TO (deg)	Req. Dist. (km)	Clearance (km)
232 D	NEW		FX	APP	NEW BRAUNFELS	TX	US	FRANK G. MCCOY	23.5	249.3	0.0	23.5
282 D	NEW		FX	APP	SAN MARCOS	TX	US	COMMUNITY PUBLIC RADIO, INC.	17.6	2.5	7.5	10.1
282 D	NEW		FX	APP	SAN MARCOS	TX	US	LISA LOPEZ	19.7	355.0	10.3	9.3
282 C2	KLQB		FM	LIC	TAYLOR	TX	US	UNIVISION RADIO LICENSE CORPORA	95.4	34.1	53.8	41.6
282 C2	KLQB		FS	LIC	TAYLOR	TX	US	UNIVISION RADIO LICENSE CORPORA	95.4	34.1	46.7	48.8
283 C1	KZEP-FM		FM	LIC	SAN ANTONIO	TX	US	CITICASTERS LICENSES, INC.	64.0	237.9	64.1	-0.051 (see Figure 2)
283 C1	KZEP-FM		FS	LIC	SAN ANTONIO	TX	US	CITICASTERS LICENSES, INC.	64.6	240.9	40.8	23.8
284 D	K284AH		FX	CP	MENDOZA	TX	US	HOUSTON CHRISTIAN BROADCASTER	23.8	37.5	16.1	7.8
284 D	K284AH		FX	LIC	MENDOZA	TX	US	HOUSTON CHRISTIAN BROADCASTER	39.2	40.1	19.7	19.5
285 A	KTXX-FM		FM	LIC	DRIPPING SPRINGS	TX	US	BMP AUSTIN LICENSE COMPANY, L.P.	53.3	350.7	49.3	4.0
285 A	KTXX-FM		FM	CP MOD	BEE CAVE	TX	US	BMP AUSTIN LICENSE COMPANY, L.P.	58.3	2.1	47.1	11.1
285 A	KTXX-FM		FM	APP	BEE CAVE	TX	US	BMP AUSTIN LICENSE COMPANY, L.P.	58.3	2.1	47.1	11.1
285 D	NEW		FX	APP	KARNES CITY	TX	US	EDGEWATER BROADCASTING, INC.	81.2	185.6	43.9	37.4
287 C	KSMG		FM	LIC	SEGUIN	TX	US	COX RADIO, INC.	60.0	213.5	83.3	-23.3 (see Note and Figure 2)
287 C	KSMG		FS	LIC	SEGUIN	TX	US	COX RADIO, INC.	60.0	213.5	37.7	22.3

(with respect to KSMG) 2nd adjacent KSMG (LIC) has a field strength of 69.26 dBu F(50,50) at the K284AH site. Therefore K284AH's interfering contour is the 109.26 dBu F(50,10) contour. K284AH's 109.26 dBu F(50,10) contour extends a horizontal distance of 268 meters from the antenna. The interfering contour does not contain any structures or population (See Figure 2). Therefore this proposal is compliant with the allowance of Rule 74.1204(d).

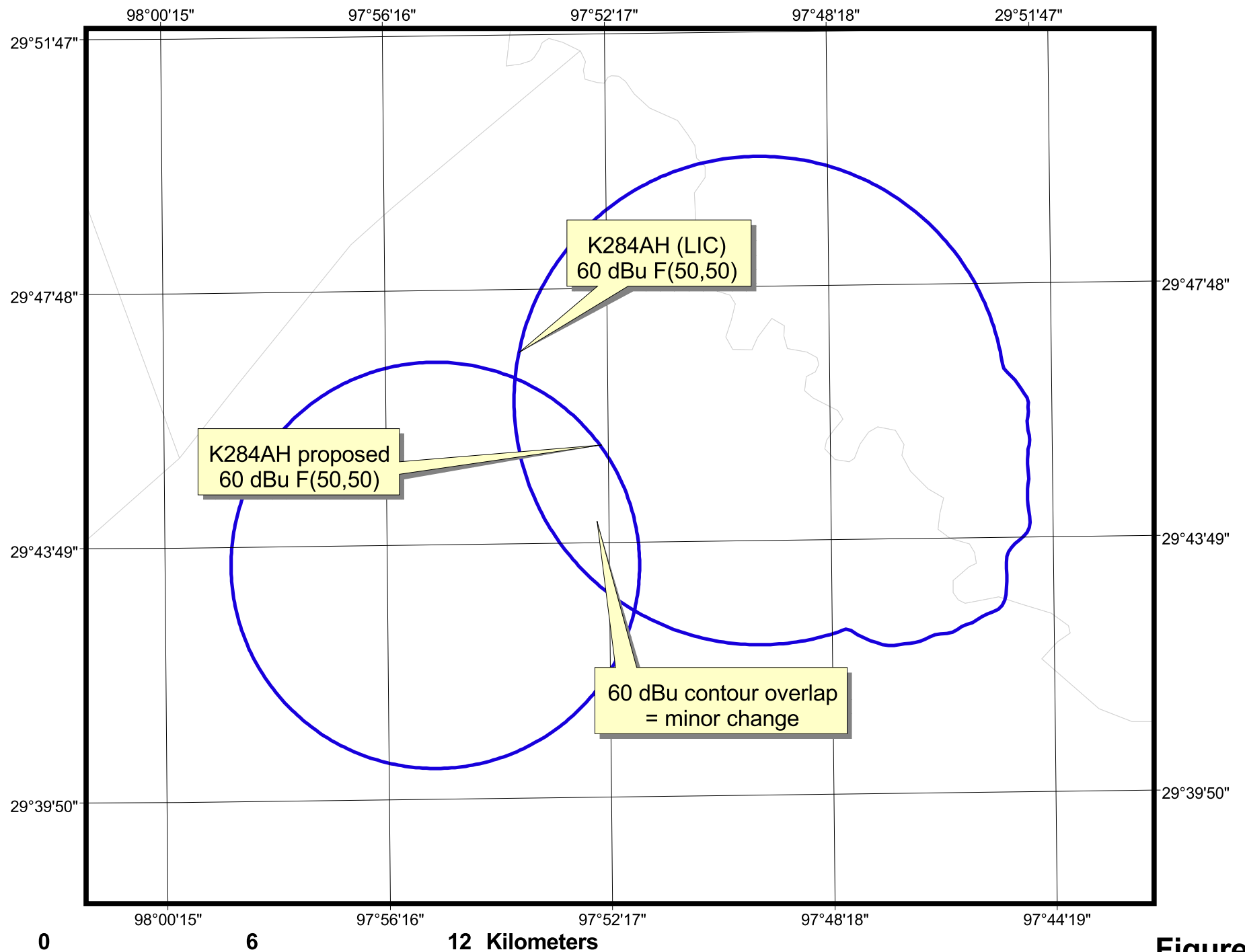


Figure 1

K284AH, MENDOZA, TX : MINOR CHANGE TO LICENSED FACILITY
Minor change showing



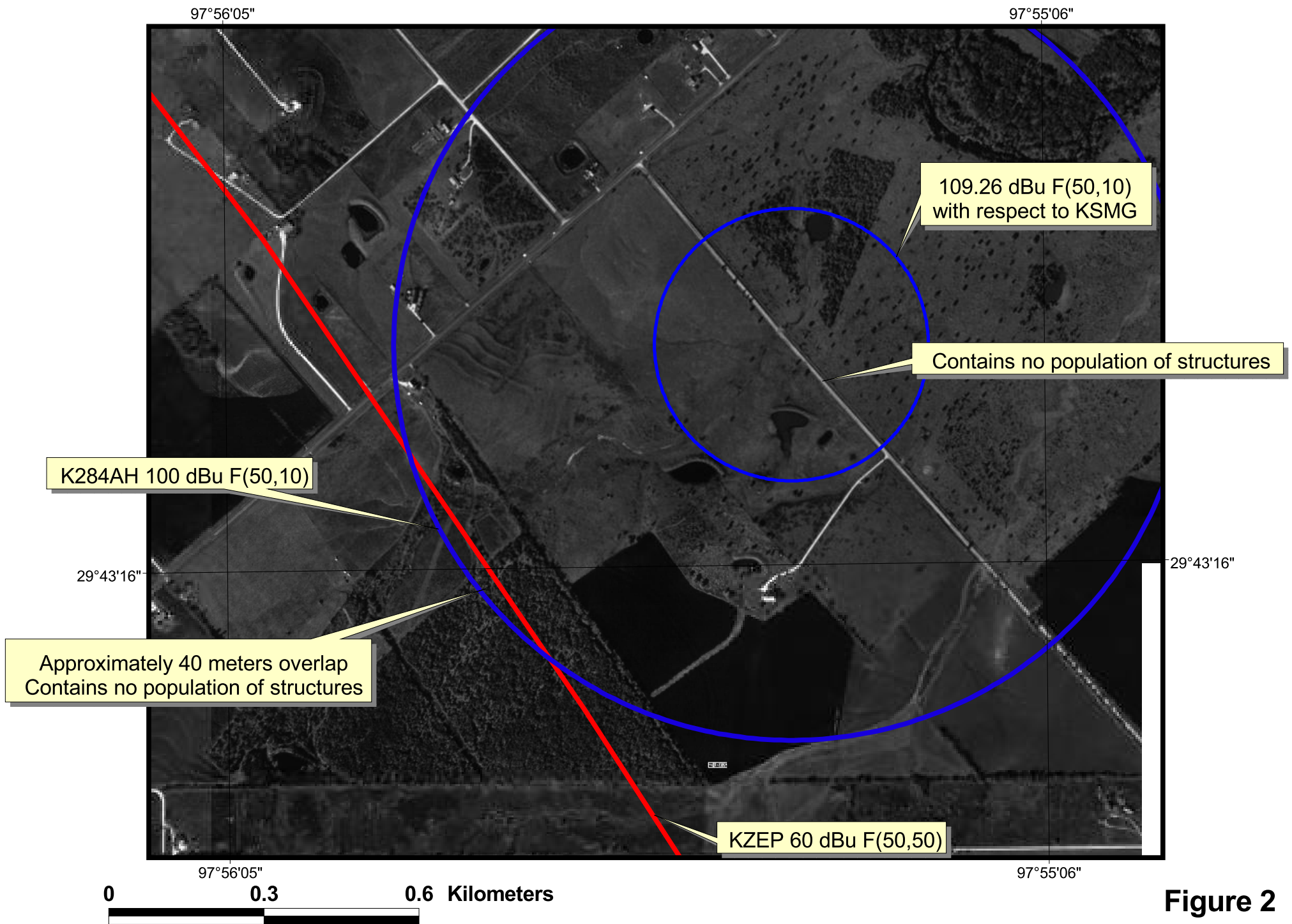


Figure 2

K284AH, MENDOZA, TX : MINOR CHANGE TO LICENSED FACILITY
Potential interference area with respect to KSMG and KZEP

Radiofrequency Electromagnetic Exposure Analysis

Source	Height AGL(m)	Antenna type	Bays	Horizontal ERP (kw)	Vertical ERP (kw)	Power Density $\mu\text{W}/\text{cm}^2$ at 2 meters AGL			
						Maximum power density	% controlled environment limit (1000 $\mu\text{W}/\text{cm}^2$)	% uncontrolled environment limit (200 $\mu\text{W}/\text{cm}^2$)	Distance to maximum PD (m)
PROPOSED	10	ERI LPX-2 E	2	0.120	0.120	18.0	1.8%	9.0%	5.4
						18.0	1.8%	9.0%	5.4

The proposed facility is excluded from environmental processing under 47. C.F.R. Section 1.1306 (i.e., The facility will not have a significant environmental impact and complies with the maximum permissible radiofrequency electromagnetic exposure limits for controlled and uncontrolled environments).

Determined using FCC FM Model 2.10