

**MINOR CHANGE APPLICATION**  
**AMENDMENT TO BNPFT-20030314BAH**  
**CONCORD BROADCASTING, LLC**  
**NEW FM TRANSLATOR STATION**  
**CH 222D - 92.3 MHZ - 0.16 KW ND**  
**LACONIA, NEW HAMPSHIRE**  
**July 2013**

**EXHIBIT C**

As indicated on Exhibit C1, the proposed new FM translator will operate with an effective radiated power of 0.16 kilowatt at 8.0 meters (26 feet) above ground level and will not cause interference to any existing, applied for, or proposed facility.

Based on the foregoing, it is believed that the proposed new FM translator is in compliance with §74.1204(d) of the Commission's rules.

**MINOR CHANGE APPLICATION**  
**AMENDMENT TO BNPFT-20030314BAH**  
**CONCORD BROADCASTING, LLC**  
**NEW FM TRANSLATOR STATION**  
**CH 222D - 92.3 MHZ - 0.16 KW ND**  
**LACONIA, NEW HAMPSHIRE**  
**July 2013**

**EXHIBIT C1**

**Interference Study for New FM Translator**  
**Using Proposed Site as Reference**

REFERENCE 43 30 13.0 N. 71 27 42.0 W.		CH# 222D - 92.3 MHz, Pwr= 0.16 kW, HAAT= 16.8 M, COR= 250 M Average Protected F(50-50)= 6.3 km Omni-directional								DISPLAY DATES DATA 07-18-13 SEARCH 07-18-13	
CH CITY	CALL	TYPE	ANT STATE	AZI. <--	DIST FILE #	LAT. LNG.	Pwr (kW) HAAT (M)	INT (km) COR (M)	PRO (km) LICENSEE	*IN* (Overlap in km)	*OUT*
222A Hanover	WGXL	LIC	CN NH	284.3 103.8	69.16 BMLH19930604KD	43 39 17.0 72 17 41.0	6.000 99	88.9 376	30.0 Great Eastern Radio, Llc	-26.0*<	18.0
224D Laconia	630362	APP	C NH	0.0 0.0	0.00 BNPFT20030314BAH	43 30 13.0 71 27 42.0	0.015 23	0.3 257	6.2 Concord Broadcasting, Llc	-11.0*<	-9.5*<
223B Andover	WXRV	LIC	CX MA	160.0 340.3	86.35 BLH20061121ACI	42 46 23.0 71 06 01.0	25.000 217	75.4 262	51.1 Beanpot License Corp.	4.6	26.2
223B Andover	AL1875	RSV-A	 MA	160.0 340.3	86.35 RML11178	42 46 23.0 71 06 01.0	50.000 150	74.7 190	61.9	5.3	11.8
224D Meredith	627221	APP	C NH	349.2 169.1	15.56 BNPFT20030311AHU	43 38 28.0 71 29 53.0	0.030 57	0.4 263	6.8 Northeast Communications C	6.2	5.9
221A Sanford	WXEX-FM	LIC	NC ME	99.7 280.2	54.00 BLH19991213ABM	43 25 11.0 70 48 09.0	1.800 156	36.2 272	24.1 Aruba Capital Holdings, Ll	11.4	20.8
219A New Durham	WWPC	APP	NVX NH	115.0 295.2	27.10 BMPED19930326IC	43 24 01.0 71 09 27.0	0.150 157	0.9 369	14.1 Morning Star Academy	19.9	12.1
219A New Durham	WWPC	CP	CN NH	115.0 295.2	26.84 BPED19880406MO	43 24 04.0 71 09 38.0	0.125 151	0.8 362	13.2 Morning Star Academy	19.7	12.8
219A Plymouth	WPCR-FM	LIC	CN NH	327.0 146.8	33.61 BLED19850401LM	43 45 25.0 71 41 23.0	0.215 -115	1.0 203	6.8 Plymouth State College	21.6	25.9
222B Augusta	WMME-FM	LIC	C ME	56.4 237.6	169.77 BLH19850402KK	44 20 07.0 69 41 01.0	50.000 152	138.8 222	53.3 Townsquare Media Augusta/w	24.6	95.4
276D Concord	W276BJ	LIC	DC NH	189.5 9.4	43.30 BLFT20081231AAZ	43 07 09.0 71 32 58.0	0.250 139	0.0 275	0.0 Saga Communications Of New	10.0R	33.3M
221A Peterborough	WDER-FM	LIC	NC NH	205.5 25.2	79.01 BLH20010828AAS	42 51 41.0 71 52 45.0	0.170 423	38.7 734	24.9 Blount Communications, Inc	34.0	45.0

**MINOR CHANGE APPLICATION**  
**AMENDMENT TO BNPFT-20030314BAH**  
**CONCORD BROADCASTING, LLC**  
**NEW FM TRANSLATOR STATION**  
**CH 222D - 92.3 MHZ - 0.16 KW ND**  
**LACONIA, NEW HAMPSHIRE**  
**July 2013**

**EXHIBIT C1 (continued)**

**Interference Study for New FM Translator**  
**Using Proposed Site as Reference**

REFERENCE 43 30 13.0 N. 71 27 42.0 W.	CH# 222D - 92.3 MHz, Pwr= 0.16 kW, HAAT= 16.8 M, COR= 250 M Average Protected F(50-50)= 6.3 km Omni-directional	DISPLAY DATES DATA 07-18-13 SEARCH 07-18-13
---	---	---

CH CITY	CALL	TYPE	ANT STATE	AZI. <--	DIST FILE #	LAT. LNG.	Pwr (kW) HAAT (M)	INT (km) COR (M)	PRO (km) LICENSEE	*IN* (Overlap in km)	*OUT*
219A Henniker	WNEC-FM	LIC	CN NH	218.9 38.6	46.67 BLED19811127AL	43 10 34.0 71 49 22.0	0.120 -64	0.8 158	5.9 New England College	38.6	39.9
222B Providence	WPRO-FM	LIC	CN RI	180.3 0.3	188.85 BMLH19920605KA	41 48 18.0 71 28 24.0	39.000 168	132.2 230	50.0 Radio License Holding Cbc,	47.9	110.0

Terrain database is FCC NGDC 30 Sec, R= 73.215 qualifying spacings or FCC minimum spacings in KM, M= Margin in KM

Contour distances are on direct line to and from reference station. Reference Zone= - Zone 2, Co to 3<sup>rd</sup> adjacent.

Ant Column: (D= DA Standard, Z= DA 73.215, N= Not DA 73.215, \_= Omni), Polarization (C,H,V,E), Beamtilt(Y,N,X)  
 "\*"affixed to 'IN' or 'OUT' values = site inside protected contour.

< = Station meets FCC minimum distance spacing for its class.

< = Contour Overlap

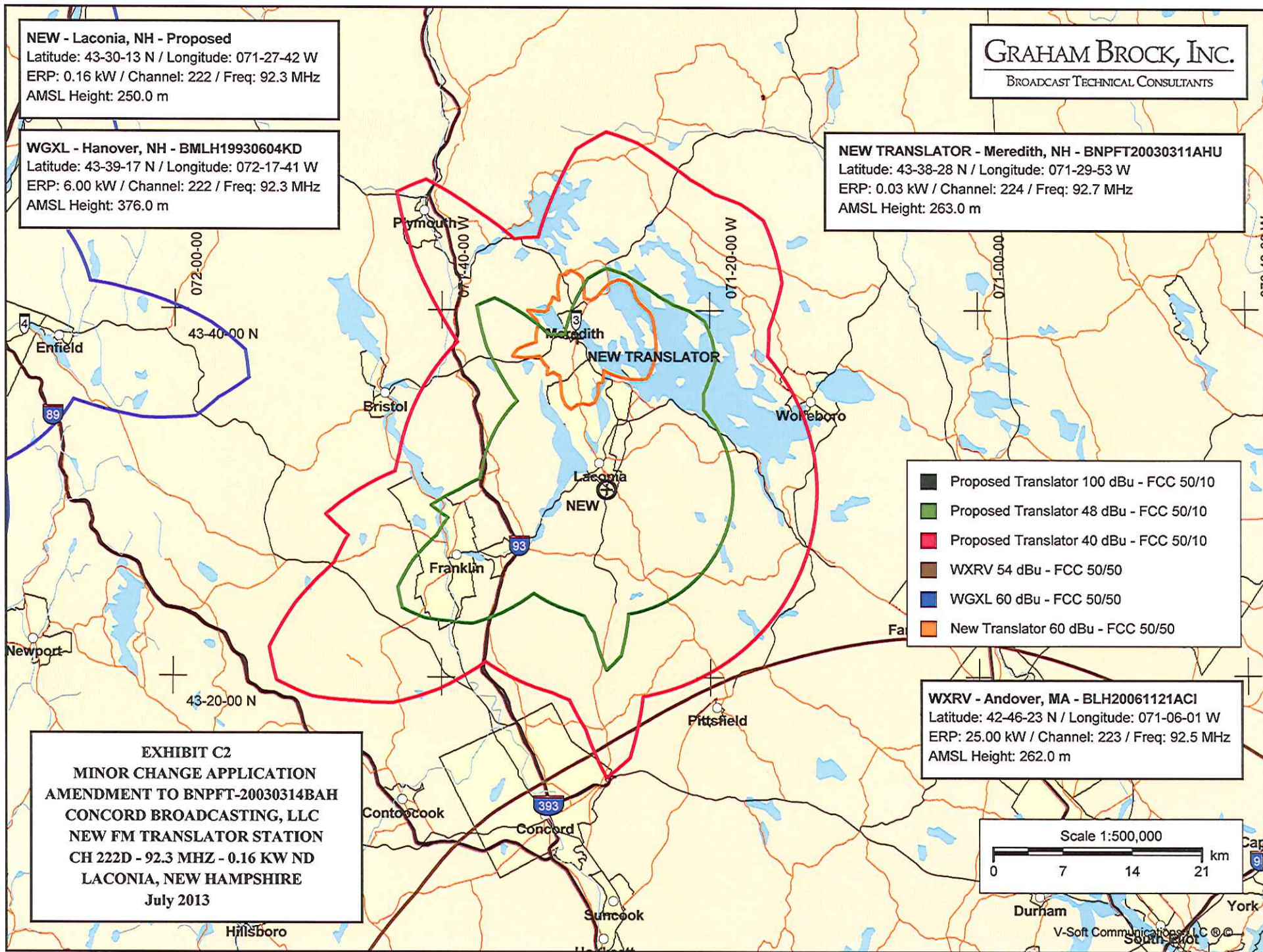
Reference station has protected zone issue:

**NEW - Laconia, NH - Proposed**  
Latitude: 43-30-13 N / Longitude: 071-27-42 W  
ERP: 0.16 kW / Channel: 222 / Freq: 92.3 MHz  
AMSL Height: 250.0 m

**WGXL - Hanover, NH - BMLH19930604KD**  
Latitude: 43-39-17 N / Longitude: 072-17-41 W  
ERP: 6.00 kW / Channel: 222 / Freq: 92.3 MHz  
AMSL Height: 376.0 m

**GRAHAM BROCK, INC.**  
BROADCAST TECHNICAL CONSULTANTS

**NEW TRANSLATOR - Meredith, NH - BNPFT20030311AHU**  
Latitude: 43-38-28 N / Longitude: 071-29-53 W  
ERP: 0.03 kW / Channel: 224 / Freq: 92.7 MHz  
AMSL Height: 263.0 m



**EXHIBIT C2**  
**MINOR CHANGE APPLICATION**  
**AMENDMENT TO BNPFT-20030314BAH**  
**CONCORD BROADCASTING, LLC**  
**NEW FM TRANSLATOR STATION**  
**CH 222D - 92.3 MHz - 0.16 kW ND**  
**LACONIA, NEW HAMPSHIRE**  
**July 2013**

**WXRV - Andover, MA - BLH20061121ACI**  
Latitude: 42-46-23 N / Longitude: 071-06-01 W  
ERP: 25.00 kW / Channel: 223 / Freq: 92.5 MHz  
AMSL Height: 262.0 m

Scale 1:500,000  
0 7 14 21 km

V-Soft Communications, LLC ©

**MINOR CHANGE APPLICATION**  
**AMENDMENT TO BNPFT-20030314BAH**  
**CONCORD BROADCASTING, LLC**  
**NEW FM TRANSLATOR STATION**  
**CH 222D - 92.3 MHZ - 0.16 KW ND**  
**LACONIA, NEW HAMPSHIRE**  
**July 2013**

**EXHIBIT C3**

Predicted contour:

N. Lat. = 43 30 13 - Tabulated Protected and Interfering Contour Data  
W. Lng. = 71 27 42 - NEW FM Translator - Laconia, New Hampshire

HAAT and Distance to Contour - FCC 30 Second Terrain Database									
Azi.	AV EL	HAAT	ERP kW	dBk	Field	100-F1	60-F5	54-F1	40-F1
000	165.2	84.8	0.1600	-7.96	1.000	0.89	10.69	15.13	36.24
010	175.2	74.8	0.1600	-7.96	1.000	0.89	10.07	14.02	33.78
020	182.7	67.3	0.1600	-7.96	1.000	0.89	9.58	13.36	31.81
030	183.8	66.2	0.1600	-7.96	1.000	0.89	9.51	13.27	31.53
040	199.5	50.5	0.1600	-7.96	1.000	0.89	8.27	11.72	27.44
050	229.5	20.5	0.1600	-7.96	1.000	0.89	6.34	9.07	21.14
060	266.0	-16.0	0.1600	-7.96	1.000	0.89	6.34	9.07	21.14
070	300.7	-50.7	0.1600	-7.96	1.000	0.89	6.34	9.07	21.14
080	378.9	-128.9	0.1600	-7.96	1.000	0.89	6.34	9.07	21.14
090	396.5	-146.5	0.1600	-7.96	1.000	0.89	6.34	9.07	21.14
100	327.2	-77.2	0.1600	-7.96	1.000	0.89	6.34	9.07	21.14
110	276.4	-26.4	0.1600	-7.96	1.000	0.89	6.34	9.07	21.14
120	267.6	-17.6	0.1600	-7.96	1.000	0.89	6.34	9.07	21.14
130	267.0	-17.0	0.1600	-7.96	1.000	0.89	6.34	9.07	21.14
140	279.2	-29.2	0.1600	-7.96	1.000	0.89	6.34	9.07	21.14
150	313.6	-63.6	0.1600	-7.96	1.000	0.89	6.34	9.07	21.14
160	256.3	-6.3	0.1600	-7.96	1.000	0.89	6.34	9.07	21.14
170	228.3	21.7	0.1600	-7.96	1.000	0.89	6.34	9.07	21.14
180	193.7	56.3	0.1600	-7.96	1.000	0.89	8.80	12.36	29.03
190	218.9	31.1	0.1600	-7.96	1.000	0.89	6.44	9.21	21.49
200	234.6	15.4	0.1600	-7.96	1.000	0.89	6.34	9.07	21.14
210	254.8	-4.8	0.1600	-7.96	1.000	0.89	6.34	9.07	21.14
220	203.8	46.2	0.1600	-7.96	1.000	0.89	7.85	11.20	26.20
230	178.0	72.0	0.1600	-7.96	1.000	0.89	9.89	13.78	33.06
240	155.8	94.2	0.1600	-7.96	1.000	0.89	11.23	16.21	38.34
250	177.1	72.9	0.1600	-7.96	1.000	0.89	9.95	13.85	33.29
260	203.2	46.8	0.1600	-7.96	1.000	0.89	7.91	11.28	26.38
270	208.1	41.9	0.1600	-7.96	1.000	0.89	7.43	10.65	24.90
280	224.7	25.3	0.1600	-7.96	1.000	0.89	6.34	9.07	21.14
290	264.4	-14.4	0.1600	-7.96	1.000	0.89	6.34	9.07	21.14
300	235.0	15.0	0.1600	-7.96	1.000	0.89	6.34	9.07	21.14
310	242.0	8.0	0.1600	-7.96	1.000	0.89	6.34	9.07	21.14
320	191.0	59.0	0.1600	-7.96	1.000	0.89	9.01	12.62	29.72
330	165.3	84.7	0.1600	-7.96	1.000	0.89	10.68	15.11	36.21
340	201.1	48.9	0.1600	-7.96	1.000	0.89	8.11	11.53	26.99
350	188.3	61.7	0.1600	-7.96	1.000	0.89	9.20	12.87	30.38

AMSL= 250 M