

MINOR CHANGE IN LICENSE
APPLICATION FOR THE W250AC
FM TRANSLATOR FACILITY
ATHENS, GEORGIA
(GEORGIA PUBLIC TELECOMMUNICATIONS COMMISSION)

Kessler and Gehman Associates, Inc.

Consultants • Broadcast • Wireless
www.kesslerandgehman.com



ENGINEERING TECHNICAL STATEMENT PREPARED BY WILLIAM T. GODFREY, JR. WITH THE TELECOMMUNICATIONS CONSULTING ENGINEERING FIRM KESSLER AND GEHMAN ASSOCIATES, INC. (“KGA”) IN CONNECTION WITH A MINOR CHANGE IN LICENSE (BLFT-19950505TH) APPLICATION REQUESTING DISPLACEMENT RELIEF FOR THE EXISTING W250AC CHANNEL 250 (97.9 MHZ) FM TRANSLATOR FACILITY (ATHENS, GA) LICENSED TO GEORGIA PUBLIC TELECOMMUNICATIONS COMMISSION.

The firm Kessler and Gehman Associates, Inc. (“KGA”) has been retained by Georgia Public Telecommunications Commission (“GPTC”) to prepare engineering studies and the engineering portion of a minor change in license application in which GPTC respectfully requests displacement relief via a waiver of Section 74.1233(a)(1) of the FCC Rules due to interference on its licensed channel (250), adjacent channels (247-249 and 251-253) and intermediate channels (outside the FM band). GPTC also seeks to convert the W250AC facility to a fill-in FM translator.

Discussion - Request for Waiver

GPTC is authorized to operate the W250AC FM translator (BLFT-19950505TH) facility on Channel 250 (97.9 MHz) with an ERP of 0.027 kW at an antenna height radiation center of 277.0 meters Above Mean Seal Level (“AMSL”) using a nondirectional, circularly polarized antenna. This instant application for a minor change to the W250AC FM translator facility requests authorization to make the following changes:

- Change from Channel 250 (97.9 MHz) to Channel 233 (94.5 MHz) via waiver request
- Change ERP from 0.027 kW to 0.25 kW
- Change to Fill-in status with W250AC’s contour contained within the primary station’s contour
- Correct tower coordinates by one second

The W250AC FM translator facility has been operated by GPTC since it was originally licensed in 1995; however, it is encountering displacement on Channel 250 at the licensed “non-fill-in” ERP of only 0.027 kW due to the minor amendment application that was filed on December 14, 2012

(BPH-20070416ACW) requesting to move the full-service, first-adjacent channel WMGZ-FM facility approximately 70 km in the direction of W250AC. The WMGZ-FM minor amendment application will not only prevent the W250AC facility from increasing its ERP to 0.25 kW as a fill-in translator, it will also take W250AC off the air due to displacement (Exhibits 17-18). The enclosed FM translator channel preclusion studies (Exhibits 19-24) demonstrate that there are no first-adjacent, second-adjacent, third-adjacent or I.F. channels available for use due to interference that would be caused by the W250AC facility. Therefore, GPTC is unable to request a channel change for the W250AC facility pursuant to the minor change provisions of Section 74.1233(a)(1), which states the following: *“For FM translator stations, a major change is any change in frequency (output channel) except changes to first, second or third adjacent channels, or intermediate frequency channels, and any change in antenna location where the station would not continue to provide 1 mV/m service to some portion of its previously authorized 1 mV/m service area. In addition, any change in frequency relocating an unbuilt station from the non-reserved band to the reserved band, or from the reserved band to the non-reserved band, will be considered major. All other changes will be considered minor.”* However, it was determined that the W250AC FM translator facility can operate on Channel 233 (94.5 MHz) as a fill-in FM translator with an ERP of 0.25 kW without involving overlap of predicted field contours with any other authorized commercial or noncommercial educational FM broadcast stations, FM translators, and Class D (secondary) noncommercial educational FM stations pursuant to Section 74.1204 of the FCC Rules.

GPTC’s waiver request should be given the “hard look” because the requested channel change and power increase will greatly serve the public’s interest for the following reasons: 1) The proposed W250AC FM translator facility would be able to continue broadcasting noncommercial educational programming to Athens, GA and the surrounding areas; and 2) The proposed W250AC FM translator facility would be able to increase its service population by 46,875 persons (66.3% increase) and increase its coverage area by 199.3 sq km (208.0% increase) which will provide the opportunity for thousands of additional listeners to enjoy GPTC’s programming. As part of the eighteen-station Georgia Public Broadcasting statewide radio network, the W250AC FM translator facility, along with its full-service WUGA-FM primary station, provide a mix of local and national noncommercial educational programming, including news, public affairs, and talk radio for their local communities.

GPTC's mission is "To create, produce and distribute high quality programs and services that educate, inform and entertain its audiences and enrich the quality of their lives."

Accordingly, this minor change in license application seeks displacement relief via a waiver of Section 74.1233(a)(1) of the FCC's Rules so that the W250AC FM translator facility can continue to serve the public as it has been doing for the past eighteen years.

Principal Community

Exhibit 8 is a principal community contour map demonstrating that the proposed W250AC FM translator facility's F(50,50) 60.0 dBuV/m contour will completely encompass the principal community of Athens, GA.

License vs. Proposed

Exhibit 9 is a contour map depicting the licensed W250AC FM translator facility's F(50,50) 60.0 dBuV/m protected contour (blue) and the proposed W250AC FM translator facility's F(50,50) 60.0 dBuV/m protected contour (red). Based on U.S. Census 2010 data, the licensed W250AC FM translator facility is predicted to serve 70,691 persons within its 95.83 sq. km F(50,50) 60.0 dBuV/m protected contour. The proposed W250AC FM translator facility is predicted to serve 117,565 persons within its 295.17 sq. km F(50,50) 60.0 dBuV/m protected contour. Therefore, the public interest will be served since the proposed FM translator facility is predicted to serve an additional 46,875 persons above what the licensed facility is predicted to serve.

Fill-In FM Translator

Exhibit 10 is a Fill-in FM translator showing which demonstrates that the proposed W250AC translator facility's F(50,50) 60 dBu coverage contour will be contained within the associated primary station's (WUGA-FM) F(50,50) 60 dBu coverage contour.

Interference Study

Exhibit 11 is an FM-to-FM interference study which verifies (“OUT” column) that the proposed W250AC FM translator facility’s F(50,10) interfering contours will not overlap any applicable station’s F(50,50) 60.0 dBuV/m protected contours. Pursuant to §74.1204, FM translators may accept interference; therefore, the “IN” column depicted in Exhibit 11 is not applicable. Accordingly, the proposed facility complies with the FM interference protection requirements pursuant to §74.1204 of the FCC Rules.

It should be noted that the interference study (Exhibit 11) was calculated using 3 arc second terrain; therefore, GPTC respectfully requests that the Commission evaluate interference using 3 arc second terrain. All 3 arc second terrain data used for this application has been provided as exhibits herein.

Allocation Studies – Calculated Using 3 Arc Second Terrain

Exhibit 12 is an allocation study map depicting the proposed facility’s F(50,50) 60.0 dBu contour (black) and its appropriate F(50,10) 40 dBu interfering contour (red) as well as the WMUU-FM facility’s F(50,50) 60.0 dBu contour (black) and its appropriate F(50,10) 40 dBu interfering contour (red) . The map was generated using 3 arc second terrain.

Exhibit 13 depicts the 3 arc second terrain data used to calculate the proposed W250AC F(50,50) 60.0 dBuV/m contour and Exhibit 14 depicts the 3 arc second terrain data used to calculate the proposed W250AC F(50,10) 40.0 dBuV/m interfering contour.

Exhibit 15 depicts the 3 arc second terrain data used to calculate the licensed WMUU-FM F(50,50) 60.0 dBuV/m contour and Exhibit 16 depicts the 3 arc second terrain data used to calculate the licensed WMUU-FM F(50,10) 40.0 dBuV/m interfering contour.

Channel Preclusion Studies

Exhibit 17 is an FM interference study which demonstrates that Channel 250 (97.9 MHz) will be displaced by the WMGZ-FM amendment application (BPH-20070416ACW) that was filed on December 14, 2012. Referring to Exhibit 17, it can be seen that the W250AC facility, operating on Channel 250 with a fill-in ERP of 0.25 kW, would have an F(50,10) 40 dBu interfering contour that would overlap the WMGZ-FM amendment application facility's protected F(50,50) 60 dBu by 10.1 km. Exhibit 18 is a contour map depicting the licensed WMUU-FM facility's F(50,50) 60 dBu contour (blue), the pending WMUU-FM application facility's F(50,50) 60 dBu contour (green), and the licensed W250AC F(50,10) 40 dBu interfering contour (red). It can be seen that the licensed W250AC facility's F(50,10) 40 dBu interfering contour, without the proposed power increase, will overlap the pending WMUU-FM application facility's F(50,50) 60 dBu contour which is not permissible pursuant to Section 74.1204 of the FCC Rules. Accordingly, Channel 250 is no longer available for the W250AC FM translator facility.

Exhibit 19 is an FM interference study which demonstrates that first-adjacent Channel 249 (97.7 MHz) is not an option. Referring to Exhibit 19, it can be seen that the W250AC facility's F(50,10) interfering contour would overlap the following station's protected F(50,50) 60 dBu contours:

- 1) 28.4 km of overlap with the WMGZ-FM amendment application facility
- 2) 41.3 km of overlap with the WSRV-FM licensed facility
- 3) 2.4 km of overlap with the W248AG CP

Accordingly, Channel 249 is not available for W250AC.

Exhibit 20 is an FM interference study which demonstrates that second-adjacent Channel 248 (97.5 MHz) is not an option. Referring to Exhibit 20, it can be seen that the W250AC facility's F(50,10) interfering contour would overlap the following station's protected F(50,50) 60 dBu contours:

- 1) 41.3 km of overlap with the WSRV-FM licensed facility
- 2) 10.1 km of overlap with the WMGZ-FM amendment application facility
- 3) 14.8 km of overlap with the licensed W248AG facility

Accordingly, Channel 248 is not available for W250AC.

Exhibit 21 is an FM interference study which demonstrates that third-adjacent Channel 247 (97.3 MHz) is not an option. Referring to Exhibit 21, it can be seen that the W250AC facility's F(50,10) interfering contour would overlap the following station's protected F(50,50) 60 dBu contours:

- 1) 54.5 km of overlap with the WSRV-FM licensed facility

Accordingly, Channel 247 is not available for W250AC.

Exhibit 22 is an FM interference study which demonstrates that first-adjacent Channel 251 (98.1 MHz) is not an option. Referring to Exhibit 22, it can be seen that the W250AC facility's F(50,10) interfering contour would overlap the following station's protected F(50,50) 60 dBu contours:

- 1) 5.3 km of overlap with the WHZT-FM licensed facility

Accordingly, Channel 251 is not available for W250AC.

Exhibit 23 is an FM interference study which demonstrates that second-adjacent Channel 252 (98.3 MHz) is not an option. Referring to Exhibit 23, it can be seen that the W250AC facility's F(50,10) interfering contour would overlap the following station's protected F(50,50) 60 dBu contours:

- 1) 6.2 km of overlap with the Channel 255 application facility (BNPFT-20030317AQU)
- 2) 4.5 km of overlap with the Channel 255 application facility (BNPFT20030317ETF)

Accordingly, Channel 252 is not available for W250AC.

Exhibit 24 is an FM interference study which demonstrates that third-adjacent Channel 253 (98.5 MHz) is not an option. Referring to Exhibit 24, it can be seen that the W250AC facility's F(50,10) interfering contour would overlap the following station's protected F(50,50) 60 dBu contours:

- 1) 13.0 km of overlap with the WSB-FM licensed facility
- 2) 6.2 km of overlap with the Channel 255 application facility (BNPFT-20030317AQU)
- 3) 4.5 km of overlap with the Channel 255 application facility (BNPFT20030317ETF)

Accordingly, Channel 253 is not available for W250AC.

Intermediate Frequency Interference (53rd & 54th Adjacent Channels)

Not applicable – outside the FM band.

Enclosed Exhibits

Exhibits 1 and 2 represent the proposed W250AC FM translator facility's administration data as well as the antenna and antenna structure specifications.

Exhibit 3 depicts the profile view of the proposed W250AC FM translator facility's antenna on the antenna structure with all the appropriate elevations.

Exhibit 4 displays the antenna elevation pattern from 6° above the horizontal to 22° below the horizontal.

Exhibit 5 displays the antenna elevation pattern from 10° above the horizontal to 90° below the horizontal.

Exhibit 6 displays the antenna elevation pattern tabulation from 10° above the horizontal to 90° below the horizontal.

Exhibit 7 depicts the location of the proposed W250AC FM translator facility's transmitter site using the Athens West 7.5-Minute, Topographic map.

Exhibit 8 is a community of license contour map demonstrating that the proposed W250AC FM translator facility's F(50,50) 60.0 dBuV/m contour completely encompasses the principal community of Athens, GA.

Exhibit 9 is a contour map comparing the licensed W250AC facility's F(50,50) 60.0 dBuV/m contour (blue) and the proposed W250AC facility's F(50,50) 60.0 dBuV/m contour (red).

Exhibit 10 is Fill-In FM Translator showing which demonstrates the WUGA-FM primary station's F(50,50) 60 dBu contour would completely encompass the proposed W250AC facility's F(50,50) 60 dBu contour in all azimuthal directions.

Exhibit 11 is an FM-to-FM interference study which demonstrates that the proposed W250AC facility operating on Channel 233 with an ERP of 0.25 kW complies with the FM interference protection requirements pursuant to §74.1204 of the FCC Rules.

Exhibit 12 is an allocation study map depicting the proposed facility's F(50,50) 60.0 dBu contour (black) and its appropriate F(50,10) 40 dBu interfering contour (red) as well as the WMUU-FM facility's F(50,50) 60.0 dBu contour (black) and its appropriate F(50,10) 40 dBu interfering contour (red) .

Exhibit 13 depicts the 3 arc second terrain data used to calculate the proposed W250AC F(50,50) 60.0 dBuV/m contour.

Exhibit 14 depicts the 3 arc second terrain data used to calculate the proposed W250AC F(50,10) 40.0 dBuV/m interfering contour.

Exhibit 15 depicts the 3 arc second terrain data used to calculate the licensed WMUU-FM F(50,50) 60.0 dBuV/m contour

Exhibit 16 depicts the 3 arc second terrain data used to calculate the licensed WMUU-FM F(50,10) 40.0 dBuV/m interfering contour.

Exhibit 17 is an FM interference study which demonstrates that Channel 250 (97.9 MHz) will be displaced by the WMGZ-FM amendment application (BPH-20070416ACW).

Exhibit 18 is a contour map depicting the licensed WMUU-FM facility's F(50,50) 60 dBu contour, the pending WMUU-FM application facility's F(50,50) 60 dBu contour, and the licensed W250AC F(50,10) 40 dBu interfering contour.

Exhibit 19 is an FM interference study which demonstrates that first-adjacent Channel 249 (97.7 MHz) is not an option.

Exhibit 20 is an FM interference study which demonstrates that second-adjacent Channel 248 (97.5 MHz) is not an option.

Exhibit 21 is an FM interference study which demonstrates that third-adjacent Channel 247 (97.3 MHz) is not an option.

Exhibit 22 is an FM interference study which demonstrates that first-adjacent Channel 251 (98.1 MHz) is not an option.

Exhibit 23 is an FM interference study which demonstrates that second-adjacent Channel 252 (98.3 MHz) is not an option.

Exhibit 24 is an FM interference study which demonstrates that third-adjacent Channel 253 (98.5 MHz) is not an option.

Environmental Impact

The proposed W250AC FM translator facility will have no significant environmental impact as defined in §1.1307 of the FCC Rules. The transmitter, transmission line and antenna system will produce an ERP of 0.25 kW. It was determined that the maximum lobe of radiation from the base of the tower will occur at approximately 119.29 feet from the base of the tower (225.11-foot radial distance from the antenna center). At approximately 119.29 feet from the base of the tower, the depression angle of the main lobe will be 58.0° below the horizontal. At that point, the relative field is 0.449 and the power density six feet above the ground will be 0.00072 mW/cm² which equates to 0.07% of the Maximum Permissible Exposure (“MPE”) limits for Occupational/Controlled Exposure and 0.36% of the MPE limits for General Population/Uncontrolled Exposure authorized by the American National Standards Institute (“ANSI”). Since operation of the proposed W250AC FM translator facility will not exceed 5.0% of the MPE limit for General Population/Uncontrolled Exposure at various points on the ground, the proposed facility is not considered a “contributor” to the RF exposure environment pursuant to OET Bulletin 65, Edition 97-01. Therefore, contributions of

exposure from other sources were not accounted for in this analysis. It is safe to conclude that the emissions would be insignificant and WOLR within the maximum allowable requirements.

If other antennas are placed on the tower in the future, the licensee will cooperate with those users by reducing or completely terminating the power to the antenna when maintenance workers are in danger from the electromagnetic radiation emanating from the antenna. It is also understood that additional antennas on the support structure could increase the overall RF exposure levels and it is the responsibility of each licensee to ensure that the total RF exposure resulting from the operation of all antennas on the support structure do not exceed the maximum permissible exposure level at any point on the ground.

Certification

This technical statement was prepared by William T. Godfrey, Jr., Engineering Associate with the firm Kessler and Gehman Associates, Inc. having offices in Gainesville, Florida, and has been working with the firm in the field of radio and television broadcast consulting since 1998. Mr. Godfrey was a graduate from the University of North Florida and a Distinguished Military Graduate from the University of Florida. As a Professional in the field of Telecommunications he states under penalty of perjury that the information contained in this report is true and correct to the best of his knowledge and belief.



WILLIAM T. GODFREY, JR.
Engineering Associate

25 January, 2013

W250AC FM Translator

Athens, Georgia

ENGINEERING SPECIFICATIONS

A. Transmitter Site:

Geographic coordinates (NAD27):

North Latitude	33° 56' 42"
West Longitude	083° 22' 38"

Site Location: Lumpkin & Carlton STS
WGA Campus

B. Main Studio Site:

Street Address Not required for translators

C. Proposed Facility:

FM Channel	Number	233
	Frequency	94.5 MHz

D. Antenna Height:

Height of Site Above Mean Sea Level (AMSL)	217.0 M
Overall Height of Structure Above Ground (including all appurtenances)	66.1 M
Overall Height of Structure Above Mean Sea Level (including all appurtenances)	283.1 M
Height of Site Above Average Terrain	-7.0 M
Antenna Height Radiation Center (R/C) Above Ground	60.0 M
Antenna Height R/C Above Average Terrain	53.0 M
Antenna Height R/C Above Mean Sea Level	277.0 M
Average of All Non-Odd Radials	224.0 M

E. System Parameters:

Transmitter Power Required	319 W
Maximum Power Input to Antenna	250 W
Transmission Line Loss	1.06 dB
Transmission Line Efficiency	78.3%
Maximum Antenna Gain in Beam Maximum	0.0 dBd
Maximum Antenna Gain in Horizontal Plane	0.0 dBd
Maximum Effective Radiated Power	23.98 dBW
In Beam Maximum	250 W
Maximum Effective Radiated Power	23.98 dBW
In Horizontal Plane	250 W

W250AC FM Translator

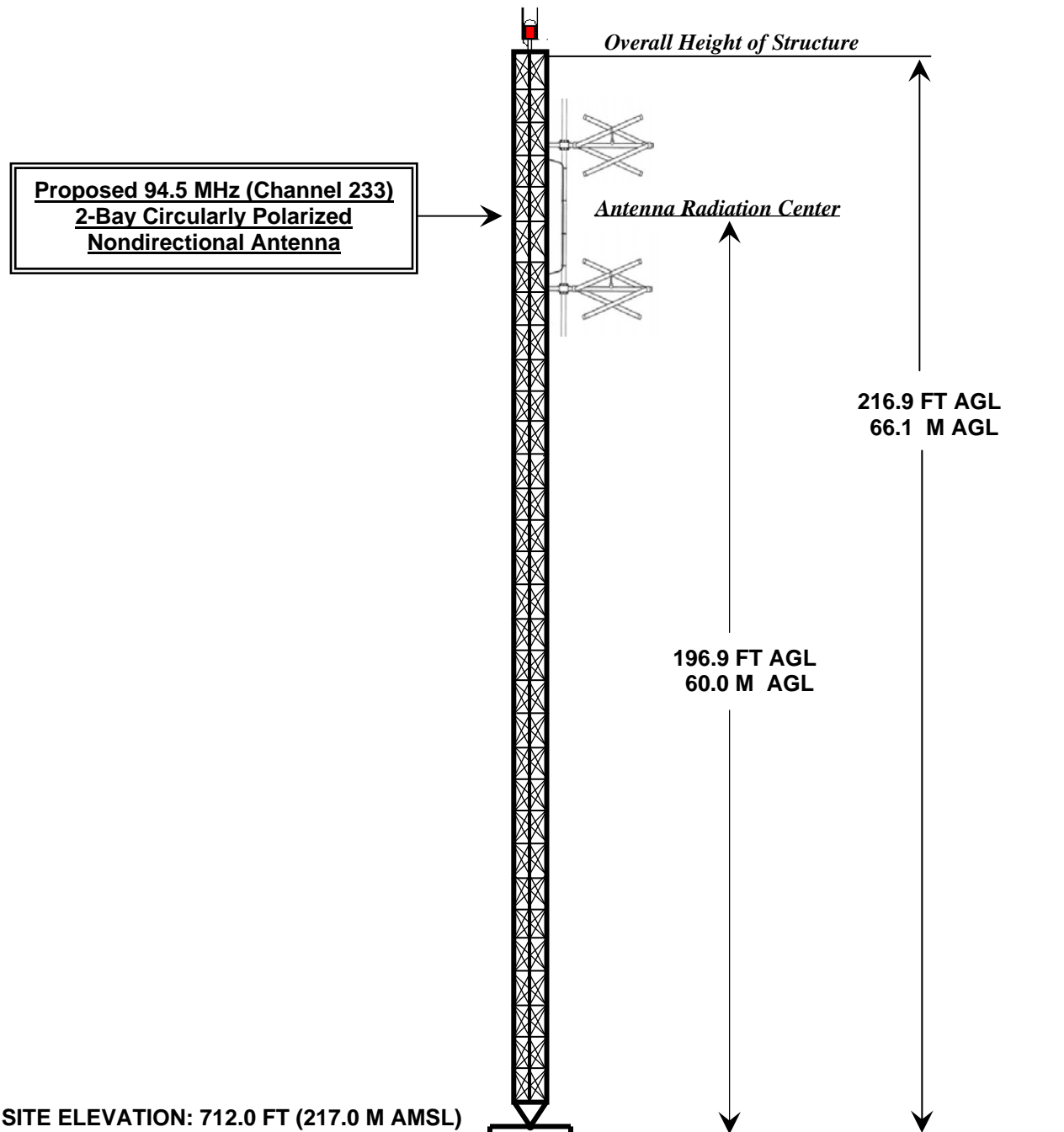
Athens, Georgia

DATA FOR NONDIRECTIONAL TRANSMITTING ANTENNA

- A. **Antenna:** Two-bay, circularly polarized, nondirectional antenna.
- B. **Electrical Beam Tilt:** 0.0°
- C. **Mechanical Beam Tilt:** N/A
- D.

<u>Maximum Power Gain</u>	<u>Horizontal Polarization</u>
Maximum:	1.0 (0.00 dB)
Horizontal:	1.0 (0.00 dB)
- E. **Length:** Approximately 12.8 feet (3.9 meters)
- F. **Transmitter Power Output:** 319 W
- G. **Null Fill:** 0.0%
- H. **Transmission Line:** 7/8" Flexline
- I. **Transmission Line Efficiency:** 78.3%
- J. **Transmission Line Length:** Approximately 290 feet (88.4 m)
- K. **Transmission Line Attenuation:** 0.366 dB/100 ft
- L. **Transmission Line Loss:** 1.06 dB

ELEVATION VIEW



OVERALL HEIGHT AGL: 66.1 M
OVERALL HEIGHT AMSL: 283.1 M
RADIATION CENTER AGL: 60.0 M
RADIATION CENTER AMSL: 277.0 M
RADIATION CENTER HAAT: 53.0 M
AVG OF ALL NON-ODD RADIALS: 224.0 M
SITE HAAT: -7.0 M

COORDINATES (NAD 27):
N. LATITUDE 33° 56' 42"
W. LONGITUDE 083° 22' 38"
Antenna Structure Registration Number:
1202652
FAA Aeronautical Study Number:
1996-ASO-1726-OE
NOTE: NOT TO SCALE

Kessler and Gehman Associates, Inc.



Consultants • Broadcast • Wireless
507 NW 60th Street, Suite C
Gainesville, FL 32607
www.kesslerandgehman.com

W250AC FM Translator
Athens, Georgia

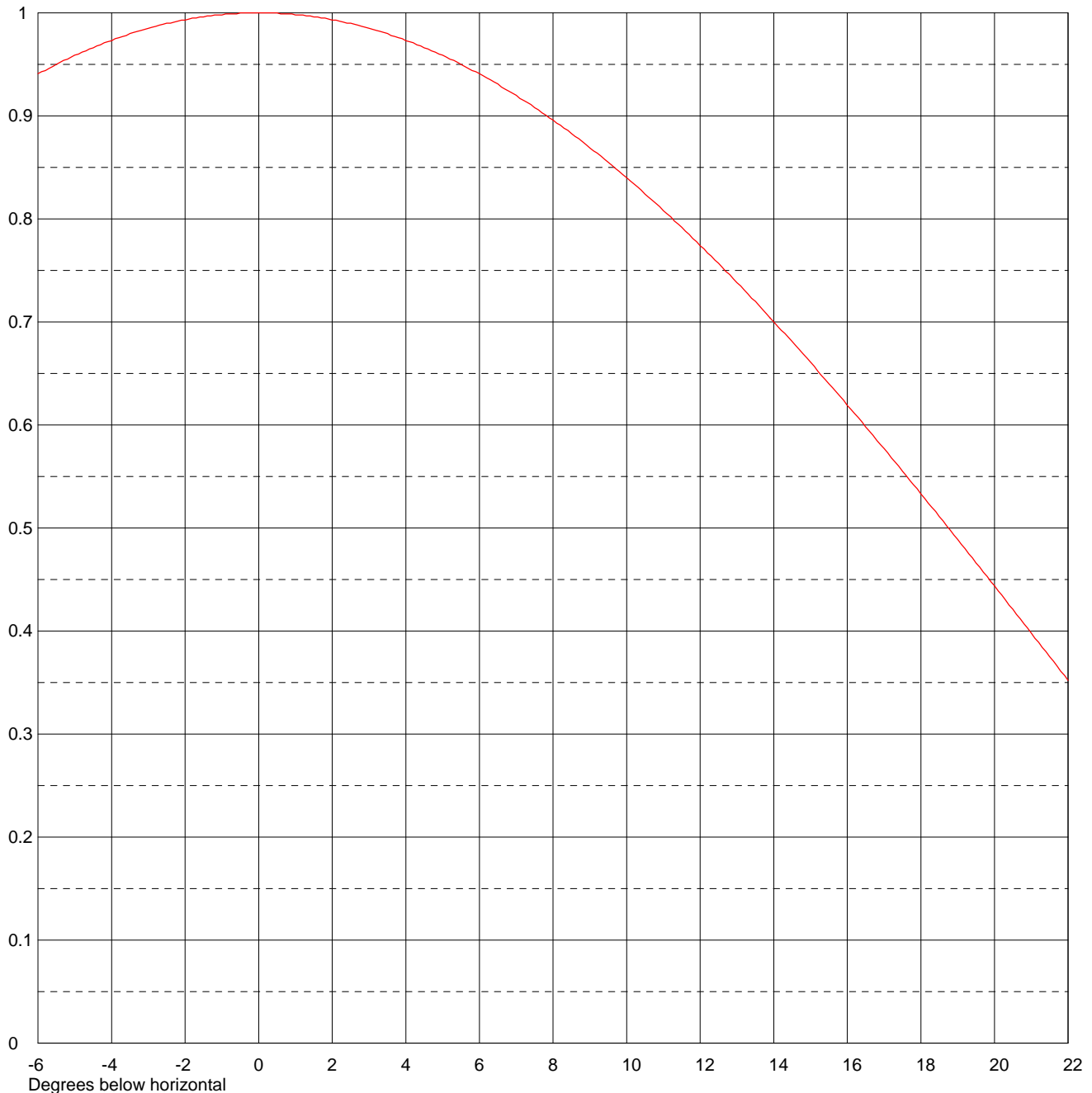
20130114

EXHIBIT 3

Date	16 Jan 2013	
Call Letters	W250AC	Channel 233
Location	Athens, GA	
Customer	GPTC	
Antenna Type	DCR-L2E	

ELEVATION PATTERN

RMS Gain at Main Lobe	1.0 (0.00 dB)	Beam Tilt	0.00 Degrees
RMS Gain at Horizontal	1.0 (0.00 dB)	Frequency	94.50 MHz
Calculated / Measured	Calculated	Drawing #	FE02L1000019000

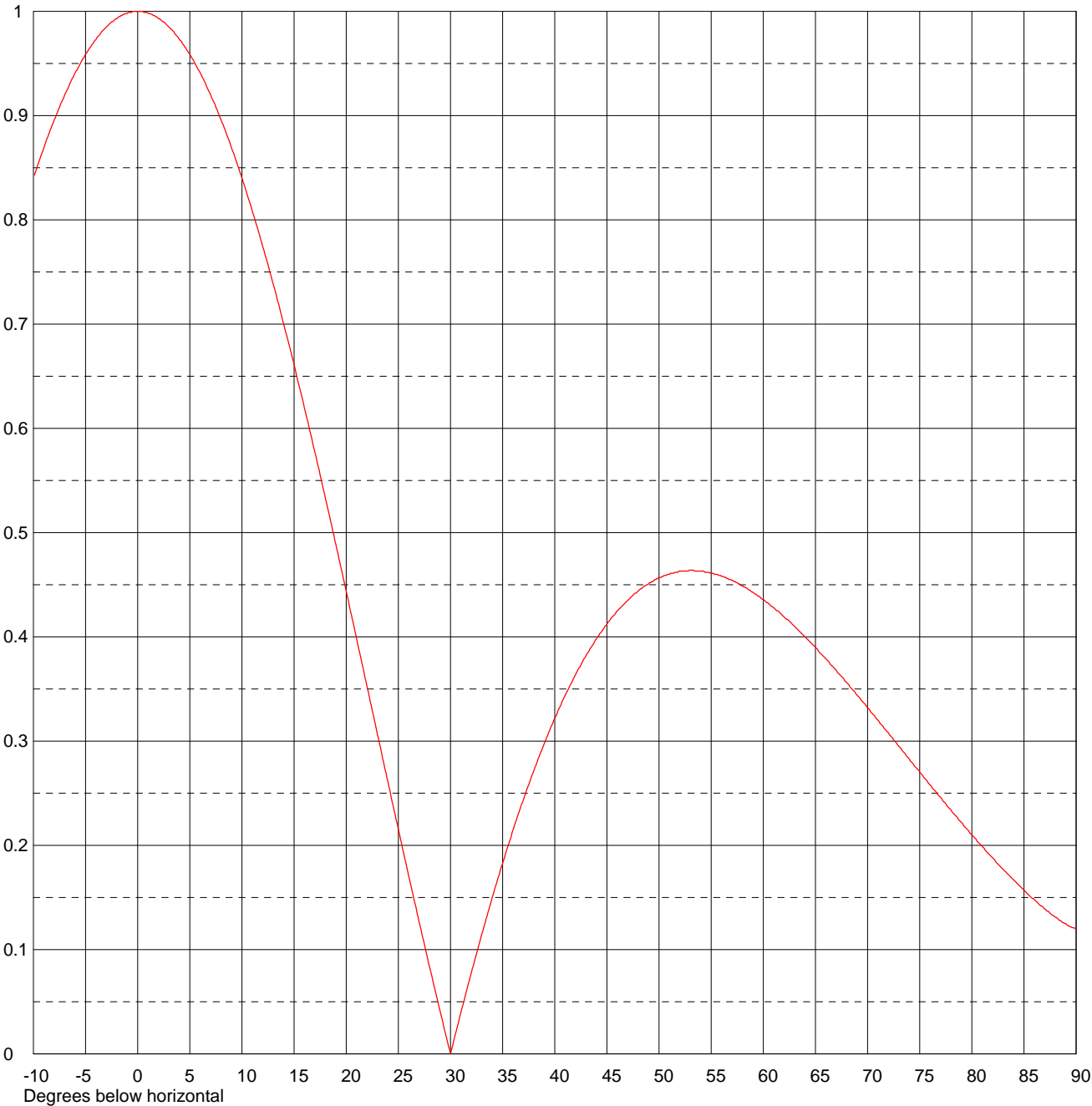


Remarks: Exhibit 4

Date	16 Jan 2013		
Call Letters	W250AC	Channel	233
Location	Athens, GA		
Customer	GPTC		
Antenna Type	DCR-L2E		

ELEVATION PATTERN

RMS Gain at Main Lobe	1.0 (0.00 dB)	Beam Tilt	0.00 Degrees
RMS Gain at Horizontal	1.0 (0.00 dB)	Frequency	94.50 MHz
Calculated / Measured	Calculated	Drawing #	FE02L1000019000-90



Remarks: Exhibit 5

Date

16 Jan 2013

Call Letters

W250AC

Location

Athens, GA

Customer

GPTC

Antenna Type

DCR-L2E

Channel

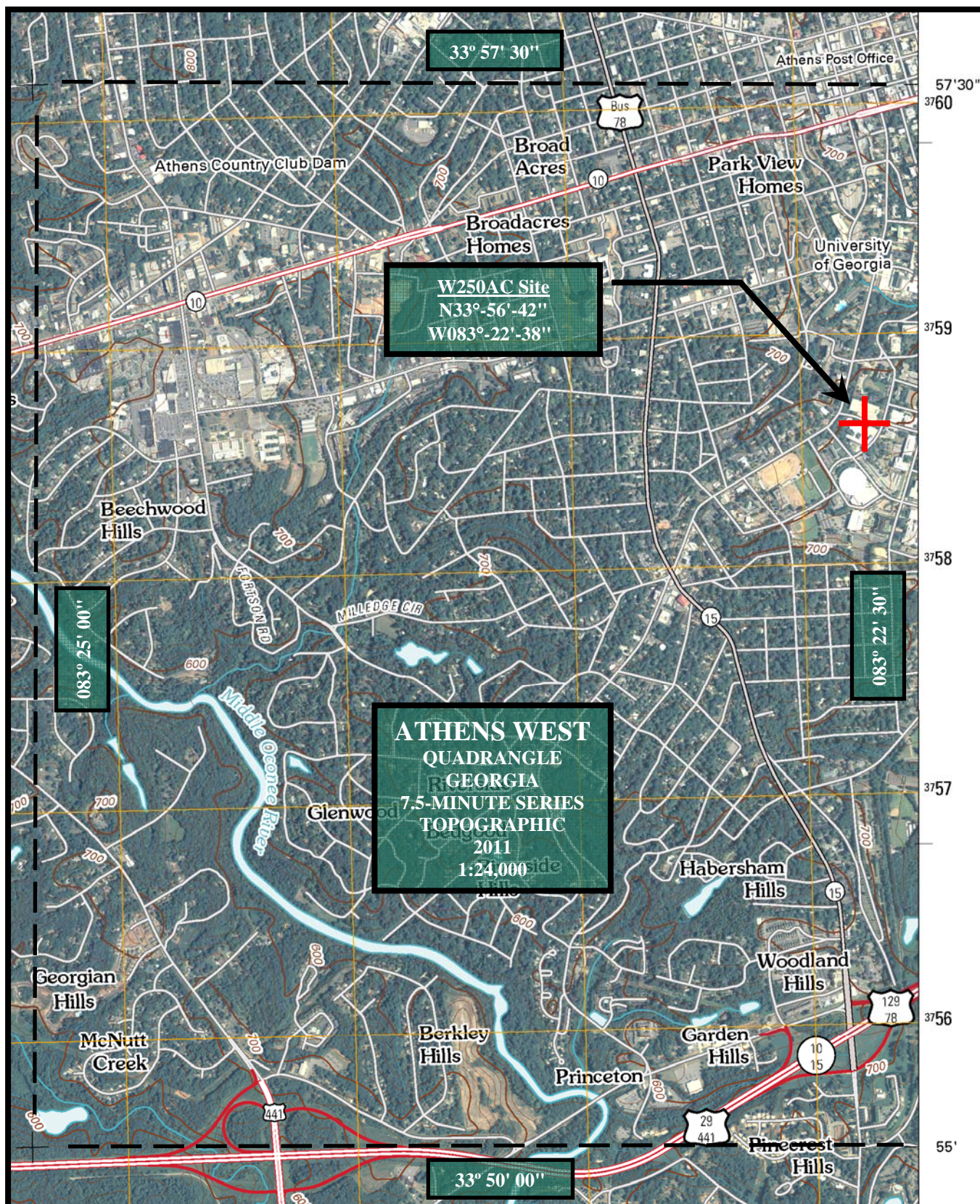
233

TABULATION OF ELEVATION PATTERN

Elevation Pattern Drawing # FE02L1000019000-90

Angle	Field	Angle	Field	Angle	Field	Angle	Field	Angle	Field	Angle	Field
-10.0	0.840	2.4	0.990	10.6	0.821	30.5	0.020	51.0	0.460	71.5	0.314
-9.5	0.855	2.6	0.989	10.8	0.815	31.0	0.040	51.5	0.462	72.0	0.308
-9.0	0.869	2.8	0.987	11.0	0.808	31.5	0.059	52.0	0.463	72.5	0.301
-8.5	0.883	3.0	0.985	11.5	0.792	32.0	0.078	52.5	0.463	73.0	0.295
-8.0	0.896	3.2	0.983	12.0	0.774	32.5	0.096	53.0	0.464	73.5	0.289
-7.5	0.908	3.4	0.981	12.5	0.757	33.0	0.115	53.5	0.463	74.0	0.283
-7.0	0.920	3.6	0.978	13.0	0.738	33.5	0.132	54.0	0.463	74.5	0.276
-6.5	0.931	3.8	0.976	13.5	0.720	34.0	0.150	54.5	0.462	75.0	0.270
-6.0	0.941	4.0	0.973	14.0	0.700	34.5	0.167	55.0	0.461	75.5	0.264
-5.5	0.950	4.2	0.971	14.5	0.681	35.0	0.183	55.5	0.460	76.0	0.258
-5.0	0.959	4.4	0.968	15.0	0.661	35.5	0.199	56.0	0.458	76.5	0.252
-4.5	0.966	4.6	0.965	15.5	0.640	36.0	0.215	56.5	0.456	77.0	0.246
-4.0	0.973	4.8	0.962	16.0	0.619	36.5	0.230	57.0	0.454	77.5	0.240
-3.5	0.980	5.0	0.959	16.5	0.598	37.0	0.244	57.5	0.452	78.0	0.234
-3.0	0.985	5.2	0.955	17.0	0.577	37.5	0.258	58.0	0.449	78.5	0.228
-2.8	0.987	5.4	0.952	17.5	0.555	38.0	0.272	58.5	0.446	79.0	0.222
-2.6	0.989	5.6	0.948	18.0	0.533	38.5	0.285	59.0	0.443	79.5	0.216
-2.4	0.990	5.8	0.944	18.5	0.511	39.0	0.298	59.5	0.439	80.0	0.210
-2.2	0.992	6.0	0.941	19.0	0.489	39.5	0.310	60.0	0.436	80.5	0.204
-2.0	0.993	6.2	0.937	19.5	0.466	40.0	0.322	60.5	0.432	81.0	0.199
-1.8	0.995	6.4	0.933	20.0	0.444	40.5	0.333	61.0	0.428	81.5	0.193
-1.6	0.996	6.6	0.928	20.5	0.421	41.0	0.344	61.5	0.424	82.0	0.188
-1.4	0.997	6.8	0.924	21.0	0.398	41.5	0.354	62.0	0.419	82.5	0.182
-1.2	0.998	7.0	0.920	21.5	0.375	42.0	0.364	62.5	0.415	83.0	0.177
-1.0	0.998	7.2	0.915	22.0	0.352	42.5	0.373	63.0	0.410	83.5	0.172
-0.8	0.999	7.4	0.911	22.5	0.329	43.0	0.382	63.5	0.405	84.0	0.167
-0.6	0.999	7.6	0.906	23.0	0.306	43.5	0.390	64.0	0.400	84.5	0.162
-0.4	1.000	7.8	0.901	23.5	0.283	44.0	0.398	64.5	0.395	85.0	0.157
-0.2	1.000	8.0	0.896	24.0	0.261	44.5	0.405	65.0	0.390	85.5	0.152
0.0	1.000	8.2	0.891	24.5	0.238	45.0	0.412	65.5	0.384	86.0	0.148
0.2	1.000	8.4	0.886	25.0	0.215	45.5	0.419	66.0	0.379	86.5	0.143
0.4	1.000	8.6	0.880	25.5	0.193	46.0	0.425	66.5	0.373	87.0	0.139
0.6	0.999	8.8	0.875	26.0	0.170	46.5	0.430	67.0	0.368	87.5	0.135
0.8	0.999	9.0	0.869	26.5	0.148	47.0	0.435	67.5	0.362	88.0	0.131
1.0	0.998	9.2	0.864	27.0	0.126	47.5	0.440	68.0	0.356	88.5	0.128
1.2	0.998	9.4	0.858	27.5	0.105	48.0	0.444	68.5	0.350	89.0	0.125
1.4	0.997	9.6	0.852	28.0	0.083	48.5	0.448	69.0	0.344	89.5	0.122
1.6	0.996	9.8	0.846	28.5	0.062	49.0	0.451	69.5	0.338	90.0	0.120
1.8	0.995	10.0	0.840	29.0	0.041	49.5	0.454	70.0	0.332		
2.0	0.993	10.2	0.834	29.5	0.020	50.0	0.457	70.5	0.326		
2.2	0.992	10.4	0.828	30.0	0.000	50.5	0.459	71.0	0.320		

Remarks: Exhibit 6



Kessler and Gehman Associates, Inc.



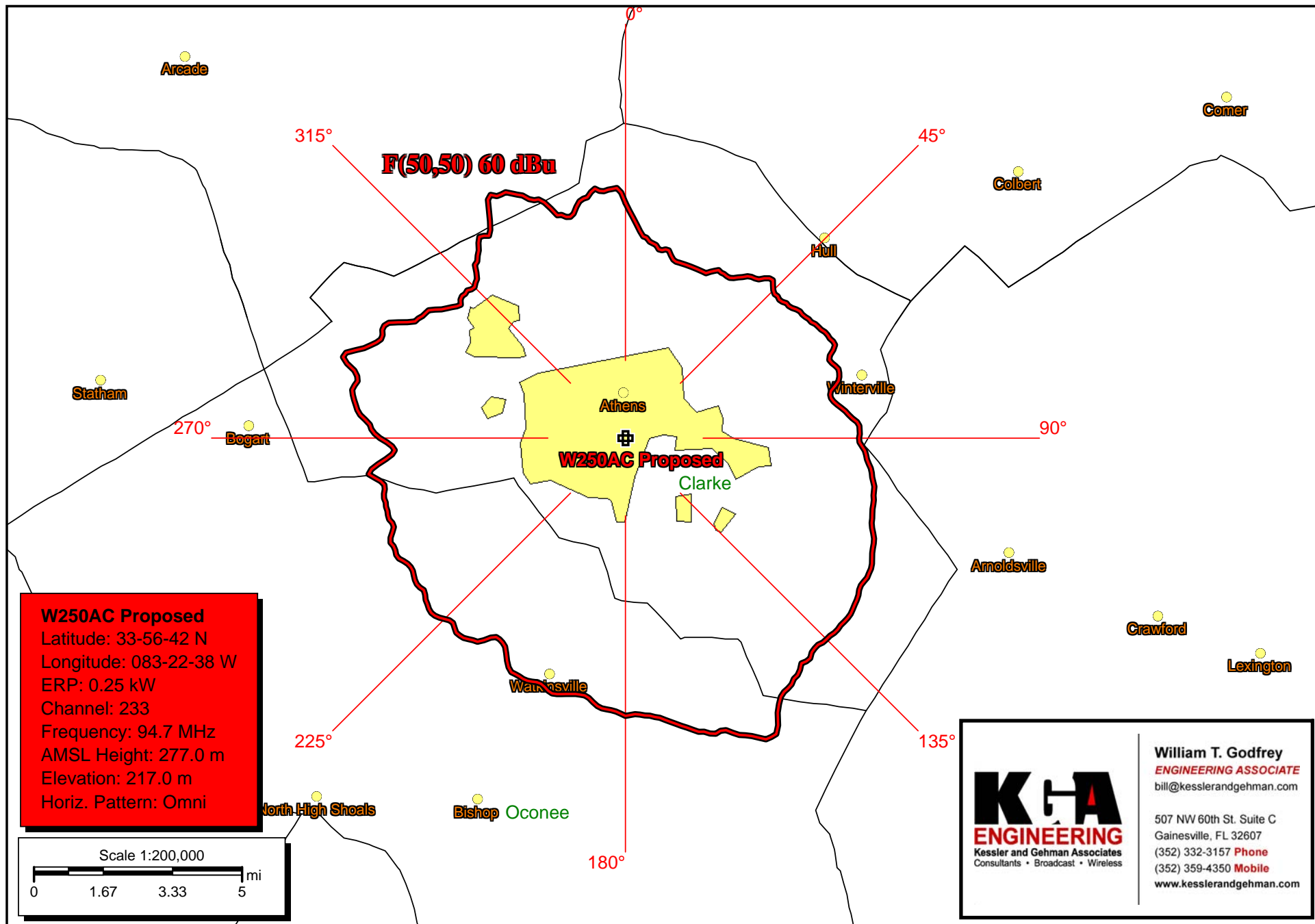
Consultants • Broadcast • Wireless
507 NW 60th Street, Suite C
Gainesville, FL 32607
www.kesslerandgehman.com

W250AC FM Translator

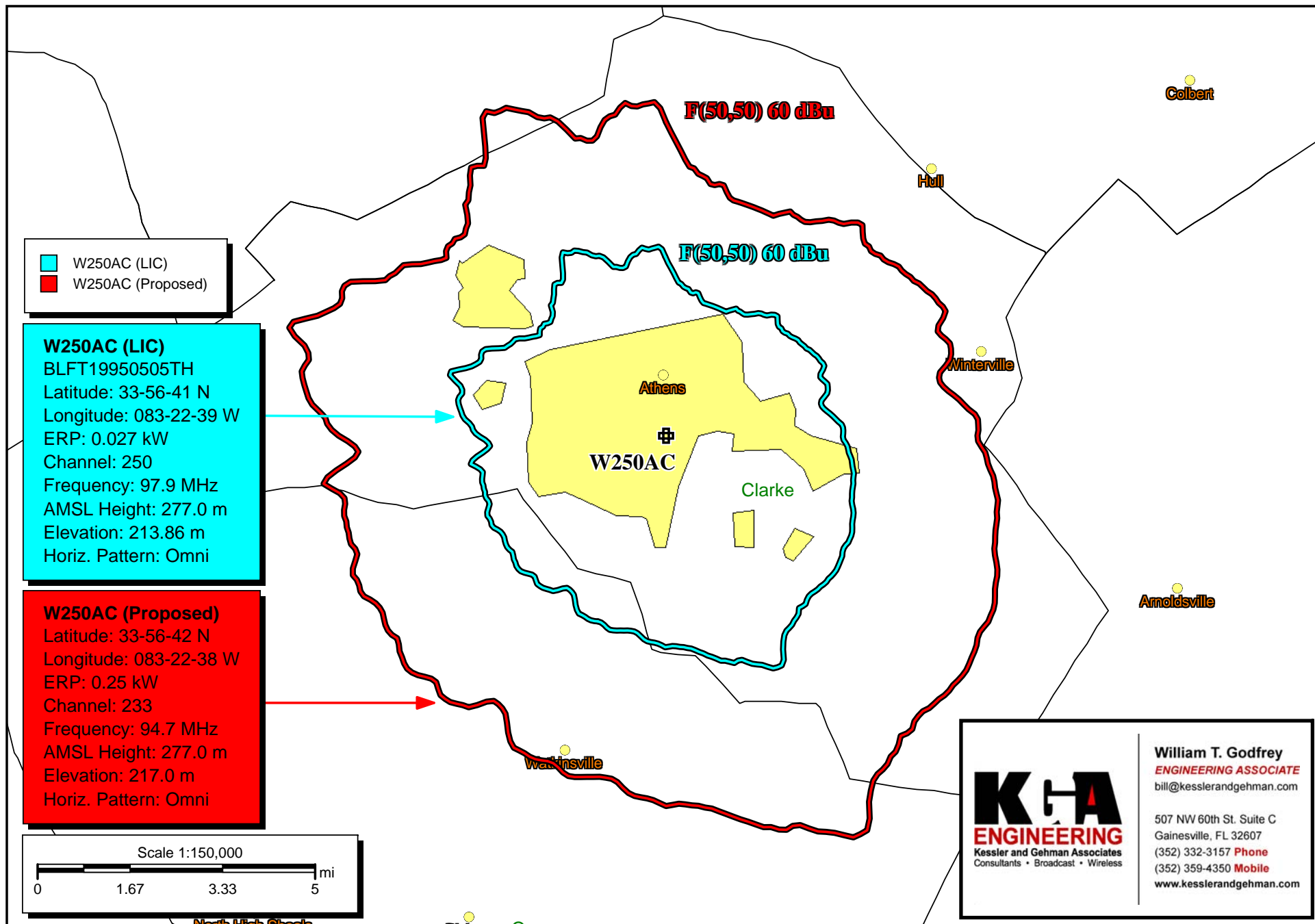
Athens, Georgia

20130116

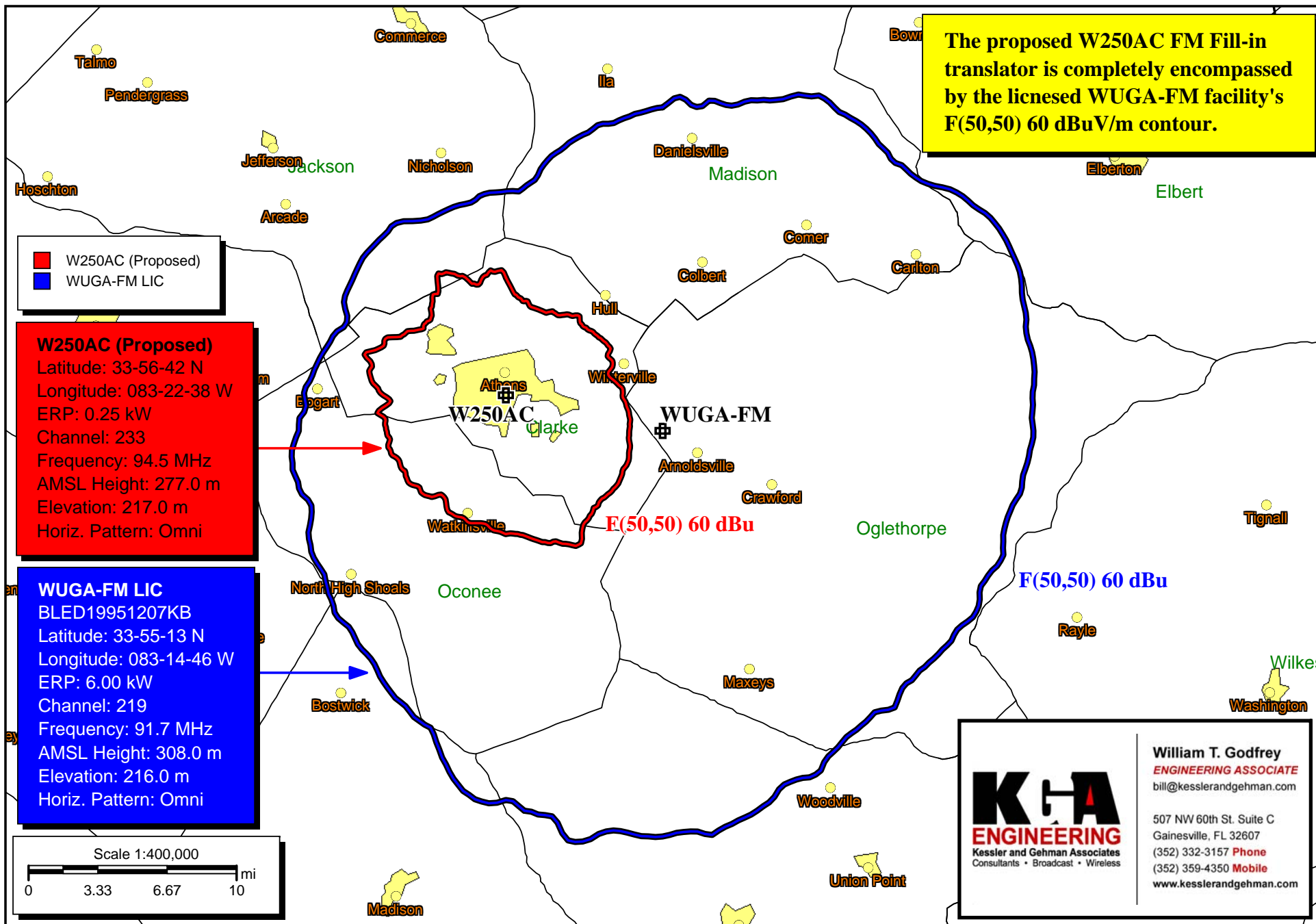
EXHIBIT 7



Proposed W250AC F(50,50) 60 dBu Community of License Map



Proposed W250AC (Red) vs. Licensed W250AC (Blue)



Proposed W250AC Fill-in Showing

Kessler and Gehman Associates, Inc.
Telecommunications Consulting Engineers

W250AC Channel 233 FM Interference Study
Georgia Public Telecommunications Commission

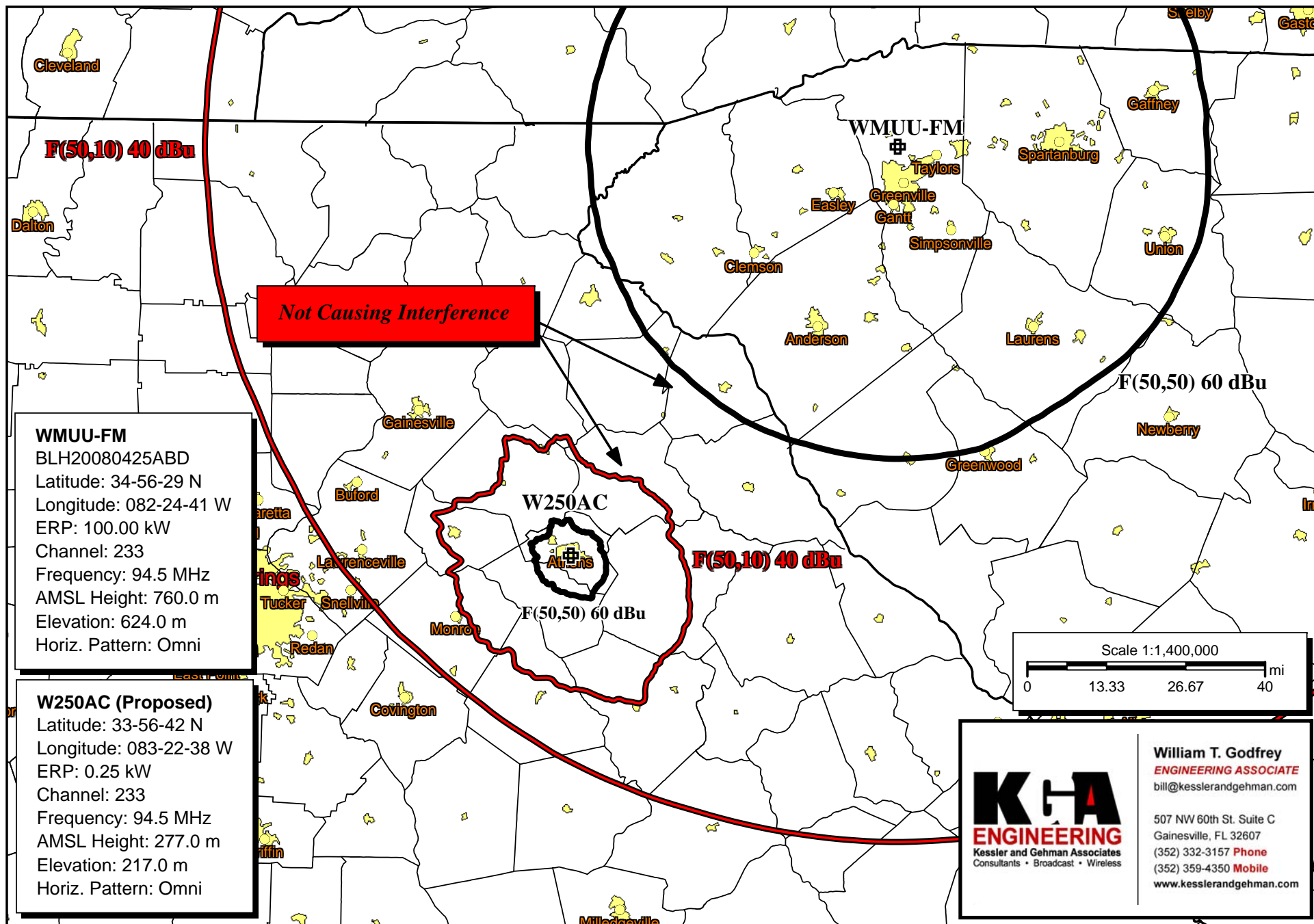
REFERENCE 33 56 42.0 N. 83 22 38.0 W.
CH# 233D - 94.5 MHz, Pwr= 0.25 kW, HAAT= 55.7 M, COR= 277 M
Average Protected F(50-50)= 9.82 km
Omni-directional

DISPLAY DATES
DATA 01-22-13
SEARCH 01-22-13

CH CITY	CALL	TYPE STATE	ANT AZI <--	DIST FILE #	LAT LNG	PWR(kW) HAAT(M)	INT(km) COR(M)	PRO(km) LICENSEE	*IN* (Overlap in km)	*OUT*
233C	ALLO Greenville	USE ____ SC	38.4 218.9	141.75 BLH6867	34 56 29.0 82 24 41.0	100.000 600	198.7 906	92.3	-64.9*	22.7
Coordinates updated from LIC record										
233C	WMUU-FM Greenville	LIC _CX SC	38.4 218.9	141.75 BLH20080425ABD	34 56 29.0 82 24 41.0	100.000 454	188.3 760	84.6	-54.5*	30.4
Wmuu, Inc.										
231C0	AL5038 Smyrna	RSV-A ____ GA	257.2 76.6	91.01 RM10983	33 45 35.0 84 20 07.0	100.000 450	11.9 733	82.1	69.4	7.8
234A	AU7960614 Crawfordville	USE ____ GA	139.7 320.0	61.55 RM10517	33 31 18.0 82 56 52.0	6.000 100	42.5 277	27.5	8.0	18.3
234A	WULK Crawfordville	LIC NCX GA	138.5 318.7	63.69 BLH20121026AAB	33 30 54.0 82 55 18.0	3.800 128	43.0 301	28.2	9.7	20.0
Lyness, Arthur										
231C0	ALLO Smyrna	USE ____ GA	257.8 77.3	95.83	33 45 34.0 84 23 19.0	100.000 450	11.9 732	82.0	74.3	12.7
Coordinates updated from LIC record										
233D	W233BF Atlanta	LIC DC_ GA	256.5 75.9	93.63 BLFT20120625ABK	33 44 41.0 84 21 36.0	0.250	68.5 602	22.7	15.5	38.7
Edgewater Broadcasting, In										
231C0	WSTR Smyrna	LIC _CX GA	257.1 76.6	90.97 BLH20060523ADI	33 45 33.0 84 20 05.0	100.000 310	10.0 594	71.8	71.3	18.1
Lincoln Financial Media Co										
235C1	WUBL Atlanta	CP _CY GA	260.5 79.9	90.32 BMPH20120801ABA	33 48 26.0 84 20 21.8	80.000 330	9.6 612	70.6	70.9	18.7
Citicasters Licenses, Inc.										
235C1	ALLO Atlanta	USE ____ GA	260.5 80.0	90.42	33 48 27.0 84 20 26.0	100.000 299	9.8 585	70.6	70.9	18.7
Coordinates updated from LIC record										
235C1	WUBL Atlanta	LIC _C_ GA	260.5 80.0	90.44 BLH20000413ABM	33 48 27.0 84 20 27.0	100.000 298	9.7 581	70.3	71.0	19.0
Citicasters Licenses, Inc.										
233D	W233BF Atlanta	APP _C_ GA	256.5 75.9	93.63 BPFT20120806ABH	33 44 41.0 84 21 36.0	0.185	64.8 602	21.1	19.2	40.3
Edgewater Broadcasting, In										
232C3	WTHP Gibson	LIC NC_ GA	135.2 315.6	103.05 BLED20111114ADZ	33 17 05.0 82 35 45.0	6.300 174	54.9 310	37.0	37.1	50.4
Augusta Radio Fellowship In										
287A	WSGC-FM« Tignal	LIC _CX GA	84.8 265.1	56.05 BLH20120118AE0	33 59 22.0 82 46 23.0	6.000 100	44.9 242	29.1	9.5R	46.6M
Georgi a-carol ina Radiocast										
233A	WIPK Calhoun	LIC NCX GA	293.3 112.5	150.78 BLH20111207AHS	34 28 18.0 84 53 08.0	6.000 99	86.2 325	27.9	54.4	88.5
Radio Webs, Inc.										
233A	AL2902 Calhoun	USE ____ GA	296.2 115.4	149.45 RM10661	34 31 48.0 84 50 19.0	6.000 100	84.5 321	26.6	54.8	89.0
287A	R15032« Tignal	ADD ____ GA	108.8 289.2	64.72	33 45 22.0 82 42 56.0	6.000 100	38.9 256	25.3	9.5R	55.2M
substituted for 244A to facilitate channel change app BPH-20120423AAD.										
233C0	ALLO Baxley	USE ____ GA	159.9 340.4	254.63	31 47 10.0 82 27 03.0	100.000 450	186.3 514	82.8	56.2	130.2
Coordinates updated from LIC record										
233D	629209 Woodstock	APP _C_ GA	278.0 97.4	100.52 BNPFT20030310ASD	34 03 59.0 84 27 20.0	0.010 224	27.6 530	8.2	62.3	56.4
Calvary Chapel Of Twin Fal										
236C3	ALLO Harlem	USE ____ GA	119.6 300.2	101.74	33 29 22.0 82 25 28.0	25.000 100	4.0 234	38.6	87.0	62.1
286C3	ALLO« Clermont	USE ____ GA	332.1 151.8	78.14	34 33 58.0 83 46 39.0	25.000 100	4.5 547	42.4	11.5R	66.6M
One Step Application										
233D	641230 Forsyth	APP _C_ GA	204.4 24.1	111.21 BNPFT20030317DRR	33 01 52.5 83 52 12.3	0.010 194	28.2 350	8.4	72.9	68.8
Edgewater Broadcasting, In										
233A	AU7054340 Woodbury	USE ____ GA	221.8 41.2	153.42 RM10038	32 54 40.0 84 28 24.0	6.000 100	74.2 334	19.0	69.3	101.2
ADD - Site restriction of 13.0 kilometers (8.1 miles) southeast.										

CH CI TY	CALL	TYPE STATE	ANT	AZI <--	DI ST FI LE #	LAT LNG	PWR(kW) HAAT (M)	INT(km) COR (M)	PRO(km) LICENSEE	Page # 2 *IN* (Overlap in km)	*OUT*
233D Westoak	632775	APP _C_ GA		272.3 91.6	109.10 BNPFT20030311ANP	33 58 41.0 84 33 25.0	0.010 115	19.7 417	6.0 Way Media , Inc.	79.6	70.2
233C0 Baxley	WBYZ	LIC _CX GA		159.9 340.4	254.79 BMLH20070403ABX	31 47 06.0 82 26 58.0	100.000 309	171.7 370	72.2 South Georgia Broadcasters	70.9	140.9
230C3 Martinez	ALLO	USE ____ GA		115.7 296.3	112.83	33 30 00.0 82 16 57.0	25.000 100	4.0 217	38.2	98.3	73.5
231D Clayton	W231BX	LIC _C_ GA		358.1 178.1	106.73 BLFT20120907AAP	34 54 24.0 83 24 56.0	0.250	1.1 1116	30.2 Georgia-carolina Radiocast	95.9	75.4
233A Woodbury	WFDR-FM	LIC _CX GA		223.7 43.1	168.36 BLH20070921ADQ	32 50 40.0 84 37 25.0	2.750 150	82.6 399	28.3 Ploener Radio Group, Lic	75.9	107.4
233A Woodbury	WFDR-FM	CP _CX GA		223.7 43.1	168.36 BPH20120913AAT	32 50 40.0 84 37 25.0	1.900 181	81.7 430	28.3 Ploener Radio Group, Lic	76.9	107.4
235D Seneca	649577	APP _C_ SC		23.4 203.6	89.85 BNPFT20030317KWT	34 41 15.0 82 59 13.0	0.010 143	0.2 394	6.6 Tabernacle Baptist College	82.5	82.2
286C3 Clermont	WNGA«	CP _CX GA		340.2 160.0	94.82 BPH20120807ACA	34 44 55.0 83 43 43.0	7.000 187	4.8 857	53.0 Tugart Properties, Lic	11.5R	83.3M
236C3 Harlem	WGAC-FM	LIC ZCN GA		114.9 295.5	120.28 BLH19940415KB	33 29 07.0 82 12 07.0	5.700 164	3.3 273	35.0 Wchz License, Lic	106.5	84.2
235D Anderson	649585	APP _C_ SC		46.8 227.2	92.90 BNPFT20030317KXL	34 30 53.0 82 38 17.0	0.019 97	0.3 324	7.3 Tabernacle Baptist College	84.5	84.5
233D Macon	970805TF	APP _CN GA		192.8 12.6	125.06 BNPFT19970805TF	32 50 43.0 83 40 28.0	0.038 53	18.8 171	5.7 Radio Training Network, In	96.1	85.2
286A Helen	WNGA«	LIC _CX GA		340.2 160.0	94.82 BLH20050323ACD	34 44 55.0 83 43 43.0	1.700 187	2.7 857	40.3 Tugart Properties, Lic	9.5R	85.3M
232D Blairsville	W232BD	LIC _C_ GA		332.8 152.5	115.21 BLFT20050125AAA	34 51 59.0 83 57 20.0	0.010 65	9.2 760	6.5 Blairsville Music, Inc.	95.5	94.0
236A Young Harris	WJRB	LIC NCX GA		336.0 155.7	121.13 BLH20070830ADE	34 56 26.0 83 55 08.0	0.200 483	1.0 1123	25.1 Wjul Radio, Lic	109.8	94.9
230C3 Martinez	WDRR	LIC ZCN GA		114.9 295.7	132.04 BLH19940224KA	33 26 17.0 82 05 19.0	13.000 139	3.6 231	35.6 Wgor License, Lic	118.0	95.3
233L1 Morganton	WAQA-LP	LIC ____ GA		323.0 142.5	132.58 BLL20021203ACW	34 53 40.0 84 15 12.0	0.079 34	17.3 579	5.3 Ministry Of Faith Associat	105.8	95.9
235D Clemson	629806	APP _V_ SC		32.2 212.6	106.14 BNPFT20030310BEI	34 45 06.0 82 45 24.0	0.019 75	0.3 340	6.6 Calvary Chapel Of Twin Fal	98.4	98.4

Terrain database is USGS 03 SEC , R= 73.215 qualifying spacings or FCC minimum Spacings in KM, M= Margin in KM
Contour distances are on direct line to and from reference station. Reference zone= , Co to 3rd adjacent.
All separation margins (if shown) include rounding
Ant Column: (D= DA Standard, Z= DA 73.215, N= Not DA 73.215, _= Omni), Polarization (C,H,V,E), Beamtilt(Y,N,X)
***affixed to 'IN' or 'OUT' values = site inside protected contour.
« = Station meets FCC minimum distance spacing for its class.



Allocation Study

W250AC (Proposed) F(50,50) 60.0 dBuV/m Contour – 3 Sec Terrain

Call Letters: W250AC (Proposed)
Latitude: 33-56-42 N
Longitude: 083-22-38 W
ERP: 0.25 kW
Channel: 233
Frequency: 94.5 MHz
AMSL Height: 277.0 m
Elevation: 217.0 m
HAAT: 52.98 m
Horiz. Antenna Pattern: Omni

Type of contour: FCC
Location Variability: 50.0 %
Time Variability: 50.0 %
of Radials Calculated: 360
Field Strength: 60.00 dBuV/m

Primary Terrain: 3 Second US Terrain

Bearing (deg)	Distance (km)	HAAT (m)
-----	-----	-----
0.0	9.09	48.2
1.0	8.78	45.5
2.0	8.52	43.1
3.0	8.26	40.9
4.0	8.02	38.7
5.0	7.83	37.0
6.0	7.79	36.7
7.0	7.65	35.3
8.0	7.60	34.9
9.0	7.56	34.5
10.0	7.41	33.1
11.0	7.40	33.0
12.0	7.46	33.6
13.0	7.45	33.5
14.0	7.28	31.8
15.0	7.14	30.5
16.0	7.09	29.0
17.0	7.09	27.8
18.0	7.09	25.3
19.0	7.09	22.6
20.0	7.09	21.4
21.0	7.09	20.6
22.0	7.09	21.0
23.0	7.09	22.7
24.0	7.09	26.0
25.0	7.09	28.6
26.0	7.09	29.9
27.0	7.22	31.2
28.0	7.32	32.3
29.0	7.43	33.3
30.0	7.39	32.9
31.0	7.40	33.0
32.0	7.38	32.8
33.0	7.39	32.9
34.0	7.47	33.6
35.0	7.58	34.8

W250AC (Proposed) F(50,50) 60.0 dBuV/m Contour – 3 Sec Terrain

36.0	7.70	35.8
37.0	7.84	37.1
38.0	7.91	37.8
39.0	7.95	38.1
40.0	8.01	38.6
41.0	8.19	40.2
42.0	8.31	41.3
43.0	8.35	41.6
44.0	8.21	40.4
45.0	8.08	39.3
46.0	8.01	38.6
47.0	8.04	38.9
48.0	7.99	38.5
49.0	8.03	38.8
50.0	8.12	39.6
51.0	8.12	39.6
52.0	8.17	40.1
53.0	8.27	40.9
54.0	8.34	41.5
55.0	8.34	41.5
56.0	8.38	41.9
57.0	8.45	42.5
58.0	8.46	42.6
59.0	8.56	43.5
60.0	8.60	43.9
61.0	8.65	44.2
62.0	8.73	45.0
63.0	8.77	45.3
64.0	8.79	45.5
65.0	8.85	46.1
66.0	8.87	46.2
67.0	8.73	45.0
68.0	8.52	43.1
69.0	8.44	42.4
70.0	8.49	42.8
71.0	8.58	43.6
72.0	8.66	44.3
73.0	8.64	44.1
74.0	8.60	43.8
75.0	8.52	43.1
76.0	8.35	41.6
77.0	8.15	39.9
78.0	8.09	39.3
79.0	8.09	39.3
80.0	8.17	40.0
81.0	8.28	41.0
82.0	8.43	42.3
83.0	8.56	43.5
84.0	8.68	44.5
85.0	8.80	45.6
86.0	8.97	47.2
87.0	9.05	47.9
88.0	9.05	47.9
89.0	9.06	48.0
90.0	9.03	47.7
91.0	9.05	47.9
92.0	9.15	48.9

W250AC (Proposed) F(50,50) 60.0 dBuV/m Contour – 3 Sec Terrain

93.0	9.27	50.0
94.0	9.32	50.5
95.0	9.37	51.0
96.0	9.45	51.8
97.0	9.55	52.8
98.0	9.61	53.5
99.0	9.66	53.9
100.0	9.73	54.7
101.0	9.80	55.5
102.0	9.82	55.7
103.0	9.84	55.9
104.0	9.89	56.5
105.0	9.92	56.8
106.0	9.94	57.0
107.0	9.98	57.5
108.0	10.03	58.1
109.0	10.06	58.6
110.0	10.15	59.6
111.0	10.26	61.1
112.0	10.36	62.5
113.0	10.43	63.4
114.0	10.47	64.0
115.0	10.52	64.7
116.0	10.61	65.9
117.0	10.69	67.2
118.0	10.75	67.9
119.0	10.76	68.1
120.0	10.79	68.5
121.0	10.75	68.0
122.0	10.73	67.7
123.0	10.77	68.2
124.0	10.86	69.5
125.0	10.91	70.3
126.0	10.95	70.8
127.0	11.00	71.5
128.0	11.05	72.2
129.0	11.05	72.3
130.0	11.04	72.1
131.0	11.02	71.9
132.0	11.05	72.2
133.0	11.04	72.1
134.0	11.00	71.5
135.0	10.99	71.4
136.0	10.98	71.2
137.0	10.92	70.4
138.0	10.93	70.6
139.0	10.98	71.2
140.0	11.11	73.1
141.0	11.10	73.0
142.0	11.05	72.2
143.0	11.21	74.6
144.0	11.32	76.3
145.0	11.36	76.7
146.0	11.48	78.6
147.0	11.54	79.4
148.0	11.57	79.9
149.0	11.67	81.4

W250AC (Proposed) F(50,50) 60.0 dBuV/m Contour – 3 Sec Terrain

150.0	11.88	84.6
151.0	12.14	88.6
152.0	12.57	95.4
153.0	12.84	99.6
154.0	12.85	99.8
155.0	12.85	99.7
156.0	12.68	97.0
157.0	12.51	94.4
158.0	12.39	92.5
159.0	12.29	90.9
160.0	12.12	88.3
161.0	11.94	85.5
162.0	11.90	84.9
163.0	11.95	85.7
164.0	11.88	84.6
165.0	11.75	82.6
166.0	11.70	81.9
167.0	11.57	79.9
168.0	11.44	78.0
169.0	11.33	76.4
170.0	11.21	74.7
171.0	11.10	73.0
172.0	11.00	71.5
173.0	10.89	70.0
174.0	10.84	69.2
175.0	10.77	68.2
176.0	10.74	67.9
177.0	10.70	67.3
178.0	10.68	66.9
179.0	10.71	67.3
180.0	10.74	67.8
181.0	10.65	66.6
182.0	10.57	65.5
183.0	10.53	64.8
184.0	10.51	64.6
185.0	10.49	64.2
186.0	10.42	63.2
187.0	10.29	61.5
188.0	10.14	59.5
189.0	10.07	58.6
190.0	10.07	58.6
191.0	10.08	58.7
192.0	10.11	59.2
193.0	10.15	59.7
194.0	10.20	60.3
195.0	10.24	60.9
196.0	10.27	61.2
197.0	10.21	60.5
198.0	10.11	59.2
199.0	10.04	58.3
200.0	10.04	58.3
201.0	10.08	58.8
202.0	10.12	59.2
203.0	10.11	59.2
204.0	10.08	58.8
205.0	10.07	58.6
206.0	10.07	58.6

W250AC (Proposed) F(50,50) 60.0 dBuV/m Contour – 3 Sec Terrain

207.0	9.94	57.1
208.0	9.75	54.9
209.0	9.51	52.4
210.0	9.31	50.4
211.0	9.22	49.5
212.0	9.18	49.1
213.0	9.17	49.0
214.0	9.30	50.3
215.0	9.54	52.7
216.0	9.73	54.7
217.0	9.79	55.3
218.0	9.86	56.2
219.0	9.94	57.1
220.0	9.96	57.3
221.0	9.97	57.4
222.0	9.87	56.3
223.0	9.77	55.1
224.0	9.79	55.4
225.0	9.89	56.5
226.0	9.99	57.7
227.0	10.07	58.6
228.0	10.10	59.0
229.0	10.06	58.5
230.0	9.99	57.7
231.0	9.94	57.1
232.0	9.83	55.8
233.0	9.76	55.0
234.0	9.82	55.7
235.0	9.84	56.0
236.0	9.81	55.6
237.0	9.75	55.0
238.0	9.69	54.3
239.0	9.68	54.2
240.0	9.72	54.6
241.0	9.81	55.5
242.0	9.92	56.8
243.0	9.95	57.1
244.0	9.90	56.6
245.0	9.89	56.5
246.0	9.94	57.0
247.0	9.87	56.2
248.0	9.72	54.6
249.0	9.59	53.2
250.0	9.59	53.2
251.0	9.66	53.9
252.0	9.65	53.8
253.0	9.62	53.5
254.0	9.63	53.6
255.0	9.60	53.3
256.0	9.62	53.5
257.0	9.58	53.1
258.0	9.51	52.4
259.0	9.49	52.2
260.0	9.60	53.4
261.0	9.81	55.6
262.0	10.02	58.1
263.0	9.89	56.5

W250AC (Proposed) F(50,50) 60.0 dBuV/m Contour – 3 Sec Terrain

264.0	9.61	53.4
265.0	9.29	50.2
266.0	9.04	47.8
267.0	8.93	46.8
268.0	9.02	47.7
269.0	9.23	49.6
270.0	9.49	52.2
271.0	9.69	54.3
272.0	9.83	55.8
273.0	9.89	56.5
274.0	10.08	58.7
275.0	10.29	61.6
276.0	10.42	63.3
277.0	10.50	64.5
278.0	10.59	65.7
279.0	10.67	66.8
280.0	10.73	67.6
281.0	10.67	66.8
282.0	10.58	65.6
283.0	10.64	66.4
284.0	10.80	68.7
285.0	11.14	73.6
286.0	11.36	76.8
287.0	11.29	75.8
288.0	10.98	71.3
289.0	10.68	67.0
290.0	10.49	64.3
291.0	10.31	61.8
292.0	10.19	60.2
293.0	10.20	60.3
294.0	10.29	61.5
295.0	10.29	61.5
296.0	10.17	60.0
297.0	9.86	56.2
298.0	9.55	52.8
299.0	9.30	50.3
300.0	9.25	49.8
301.0	9.15	48.9
302.0	9.11	48.5
303.0	9.07	48.1
304.0	8.88	46.4
305.0	8.68	44.5
306.0	8.54	43.2
307.0	8.41	42.1
308.0	8.27	41.0
309.0	8.19	40.2
310.0	8.32	41.4
311.0	8.37	41.8
312.0	8.33	41.5
313.0	8.37	41.8
314.0	8.28	41.0
315.0	8.25	40.8
316.0	8.35	41.6
317.0	8.41	42.2
318.0	8.61	43.9
319.0	8.87	46.3
320.0	8.91	46.6

W250AC (Proposed) F(50,50) 60.0 dBuV/m Contour – 3 Sec Terrain

321.0	9.08	48.2
322.0	9.21	49.4
323.0	9.45	51.7
324.0	9.61	53.5
325.0	9.55	52.8
326.0	9.44	51.6
327.0	9.60	53.3
328.0	9.89	56.5
329.0	10.25	61.0
330.0	10.64	66.4
331.0	10.75	68.0
332.0	10.60	65.8
333.0	10.57	65.4
334.0	10.57	65.5
335.0	10.44	63.5
336.0	10.30	61.7
337.0	10.19	60.1
338.0	9.96	57.3
339.0	9.85	56.1
340.0	9.82	55.7
341.0	9.63	53.7
342.0	9.33	50.6
343.0	9.01	47.5
344.0	8.98	47.2
345.0	8.85	46.1
346.0	8.82	45.7
347.0	8.90	46.6
348.0	9.14	48.7
349.0	9.32	50.5
350.0	9.40	51.3
351.0	9.42	51.5
352.0	9.60	53.4
353.0	9.72	54.6
354.0	9.61	53.4
355.0	9.58	53.1
356.0	9.63	53.6
357.0	9.65	53.8
358.0	9.68	54.1
359.0	9.50	52.2

Average HAAT for radials shown: 55.0 m

W250AC (Proposed) F(50,10) 40.0 dBuV/m Contour – 3 Sec Terrain

Call Letters: W250AC (Proposed)
Latitude: 33-56-42 N
Longitude: 083-22-38 W
ERP: 0.25 kW
Channel: 233
Frequency: 94.5 MHz
AMSL Height: 277.0 m
Elevation: 217.0 m
HAAT: 52.98 m
Horiz. Antenna Pattern: Omni

Type of contour: FCC
Location Variability: 50.0 %
Time Variability: 10.0 %
of Radials Calculated: 360
Field Strength: 40.00 dBuV/m

Primary Terrain: 3 Second US Terrain

Bearing (deg)	Distance (km)	HAAT (m)
-----	-----	-----
0.0	30.12	48.2
1.0	29.14	45.5
2.0	28.32	43.1
3.0	27.54	40.9
4.0	26.78	38.7
5.0	26.19	37.0
6.0	26.08	36.7
7.0	25.62	35.3
8.0	25.48	34.9
9.0	25.33	34.5
10.0	24.83	33.1
11.0	24.80	33.0
12.0	25.01	33.6
13.0	24.97	33.5
14.0	24.39	31.8
15.0	23.92	30.5
16.0	23.76	29.0
17.0	23.76	27.8
18.0	23.76	25.3
19.0	23.76	22.6
20.0	23.76	21.4
21.0	23.76	20.6
22.0	23.76	21.0
23.0	23.76	22.7
24.0	23.76	26.0
25.0	23.76	28.6
26.0	23.76	29.9
27.0	24.19	31.2
28.0	24.54	32.3
29.0	24.91	33.3
30.0	24.77	32.9
31.0	24.80	33.0
32.0	24.74	32.8
33.0	24.77	32.9
34.0	25.03	33.6
35.0	25.42	34.8

W250AC (Proposed) F(50,10) 40.0 dBuV/m Contour – 3 Sec Terrain

36.0	25.77	35.8
37.0	26.23	37.1
38.0	26.47	37.8
39.0	26.56	38.1
40.0	26.76	38.6
41.0	27.31	40.2
42.0	27.69	41.3
43.0	27.80	41.6
44.0	27.37	40.4
45.0	26.98	39.3
46.0	26.77	38.6
47.0	26.86	38.9
48.0	26.71	38.5
49.0	26.83	38.8
50.0	27.10	39.6
51.0	27.08	39.6
52.0	27.27	40.1
53.0	27.55	40.9
54.0	27.77	41.5
55.0	27.77	41.5
56.0	27.90	41.9
57.0	28.10	42.5
58.0	28.15	42.6
59.0	28.45	43.5
60.0	28.58	43.9
61.0	28.72	44.2
62.0	28.98	45.0
63.0	29.10	45.3
64.0	29.16	45.5
65.0	29.36	46.1
66.0	29.41	46.2
67.0	28.96	45.0
68.0	28.32	43.1
69.0	28.07	42.4
70.0	28.23	42.8
71.0	28.50	43.6
72.0	28.74	44.3
73.0	28.68	44.1
74.0	28.56	43.8
75.0	28.33	43.1
76.0	27.80	41.6
77.0	27.19	39.9
78.0	27.00	39.3
79.0	27.01	39.3
80.0	27.24	40.0
81.0	27.60	41.0
82.0	28.03	42.3
83.0	28.45	43.5
84.0	28.80	44.5
85.0	29.20	45.6
86.0	29.74	47.2
87.0	30.00	47.9
88.0	30.01	47.9
89.0	30.03	48.0
90.0	29.93	47.7
91.0	29.99	47.9
92.0	30.33	48.9

W250AC (Proposed) F(50,10) 40.0 dBuV/m Contour – 3 Sec Terrain

93.0	30.72	50.0
94.0	30.92	50.5
95.0	31.08	51.0
96.0	31.38	51.8
97.0	31.75	52.8
98.0	31.97	53.5
99.0	32.14	53.9
100.0	32.41	54.7
101.0	32.71	55.5
102.0	32.77	55.7
103.0	32.84	55.9
104.0	33.06	56.5
105.0	33.14	56.8
106.0	33.22	57.0
107.0	33.38	57.5
108.0	33.59	58.1
109.0	33.73	58.6
110.0	34.05	59.6
111.0	34.49	61.1
112.0	34.91	62.5
113.0	35.16	63.4
114.0	35.32	64.0
115.0	35.54	64.7
116.0	35.88	65.9
117.0	36.22	67.2
118.0	36.43	67.9
119.0	36.49	68.1
120.0	36.59	68.5
121.0	36.46	68.0
122.0	36.36	67.7
123.0	36.52	68.2
124.0	36.88	69.5
125.0	37.08	70.3
126.0	37.23	70.8
127.0	37.43	71.5
128.0	37.61	72.2
129.0	37.64	72.3
130.0	37.59	72.1
131.0	37.52	71.9
132.0	37.61	72.2
133.0	37.57	72.1
134.0	37.41	71.5
135.0	37.39	71.4
136.0	37.35	71.2
137.0	37.11	70.4
138.0	37.17	70.6
139.0	37.33	71.2
140.0	37.85	73.1
141.0	37.83	73.0
142.0	37.61	72.2
143.0	38.25	74.6
144.0	38.69	76.3
145.0	38.81	76.7
146.0	39.29	78.6
147.0	39.51	79.4
148.0	39.63	79.9
149.0	39.99	81.4

W250AC (Proposed) F(50,10) 40.0 dBuV/m Contour – 3 Sec Terrain

150.0	40.78	84.6
151.0	41.73	88.6
152.0	43.26	95.4
153.0	44.15	99.6
154.0	44.19	99.8
155.0	44.18	99.7
156.0	43.61	97.0
157.0	43.05	94.4
158.0	42.63	92.5
159.0	42.28	90.9
160.0	41.67	88.3
161.0	41.02	85.5
162.0	40.86	84.9
163.0	41.04	85.7
164.0	40.80	84.6
165.0	40.30	82.6
166.0	40.12	81.9
167.0	39.62	79.9
168.0	39.14	78.0
169.0	38.72	76.4
170.0	38.26	74.7
171.0	37.83	73.0
172.0	37.42	71.5
173.0	37.00	70.0
174.0	36.80	69.2
175.0	36.53	68.2
176.0	36.42	67.9
177.0	36.26	67.3
178.0	36.16	66.9
179.0	36.27	67.3
180.0	36.40	67.8
181.0	36.06	66.6
182.0	35.75	65.5
183.0	35.57	64.8
184.0	35.49	64.6
185.0	35.40	64.2
186.0	35.12	63.2
187.0	34.60	61.5
188.0	34.03	59.5
189.0	33.75	58.6
190.0	33.75	58.6
191.0	33.77	58.7
192.0	33.92	59.2
193.0	34.07	59.7
194.0	34.25	60.3
195.0	34.43	60.9
196.0	34.53	61.2
197.0	34.31	60.5
198.0	33.91	59.2
199.0	33.64	58.3
200.0	33.63	58.3
201.0	33.81	58.8
202.0	33.93	59.2
203.0	33.92	59.2
204.0	33.79	58.8
205.0	33.74	58.6
206.0	33.73	58.6

W250AC (Proposed) F(50,10) 40.0 dBuV/m Contour – 3 Sec Terrain

207.0	33.26	57.1
208.0	32.50	54.9
209.0	31.59	52.4
210.0	30.86	50.4
211.0	30.56	49.5
212.0	30.42	49.1
213.0	30.39	49.0
214.0	30.85	50.3
215.0	31.68	52.7
216.0	32.44	54.7
217.0	32.64	55.3
218.0	32.94	56.2
219.0	33.24	57.1
220.0	33.33	57.3
221.0	33.34	57.4
222.0	32.97	56.3
223.0	32.58	55.1
224.0	32.67	55.4
225.0	33.04	56.5
226.0	33.45	57.7
227.0	33.75	58.6
228.0	33.86	59.0
229.0	33.72	58.5
230.0	33.44	57.7
231.0	33.23	57.1
232.0	32.80	55.8
233.0	32.53	55.0
234.0	32.79	55.7
235.0	32.87	56.0
236.0	32.74	55.6
237.0	32.51	55.0
238.0	32.27	54.3
239.0	32.24	54.2
240.0	32.38	54.6
241.0	32.71	55.5
242.0	33.16	56.8
243.0	33.26	57.1
244.0	33.07	56.6
245.0	33.04	56.5
246.0	33.23	57.0
247.0	32.95	56.2
248.0	32.37	54.6
249.0	31.87	53.2
250.0	31.88	53.2
251.0	32.15	53.9
252.0	32.11	53.8
253.0	32.00	53.5
254.0	32.03	53.6
255.0	31.91	53.3
256.0	31.98	53.5
257.0	31.84	53.1
258.0	31.58	52.4
259.0	31.53	52.2
260.0	31.94	53.4
261.0	32.74	55.6
262.0	33.57	58.1
263.0	33.05	56.5

W250AC (Proposed) F(50,10) 40.0 dBuV/m Contour – 3 Sec Terrain

264.0	31.97	53.4
265.0	30.82	50.2
266.0	29.97	47.8
267.0	29.60	46.8
268.0	29.91	47.7
269.0	30.58	49.6
270.0	31.52	52.2
271.0	32.29	54.3
272.0	32.80	55.8
273.0	33.04	56.5
274.0	33.77	58.7
275.0	34.64	61.6
276.0	35.14	63.3
277.0	35.47	64.5
278.0	35.81	65.7
279.0	36.12	66.8
280.0	36.35	67.6
281.0	36.11	66.8
282.0	35.78	65.6
283.0	36.02	66.4
284.0	36.64	68.7
285.0	37.98	73.6
286.0	38.82	76.8
287.0	38.57	75.8
288.0	37.36	71.3
289.0	36.18	67.0
290.0	35.41	64.3
291.0	34.70	61.8
292.0	34.23	60.2
293.0	34.25	60.3
294.0	34.61	61.5
295.0	34.61	61.5
296.0	34.16	60.0
297.0	32.93	56.2
298.0	31.72	52.8
299.0	30.85	50.3
300.0	30.67	49.8
301.0	30.35	48.9
302.0	30.21	48.5
303.0	30.08	48.1
304.0	29.46	46.4
305.0	28.80	44.5
306.0	28.37	43.2
307.0	27.98	42.1
308.0	27.57	41.0
309.0	27.32	40.2
310.0	27.72	41.4
311.0	27.87	41.8
312.0	27.75	41.5
313.0	27.86	41.8
314.0	27.59	41.0
315.0	27.51	40.8
316.0	27.79	41.6
317.0	27.99	42.2
318.0	28.60	43.9
319.0	29.42	46.3
320.0	29.55	46.6

W250AC (Proposed) F(50,10) 40.0 dBuV/m Contour – 3 Sec Terrain

321.0	30.09	48.2
322.0	30.54	49.4
323.0	31.36	51.7
324.0	31.97	53.5
325.0	31.73	52.8
326.0	31.32	51.6
327.0	31.91	53.3
328.0	33.04	56.5
329.0	34.46	61.0
330.0	36.01	66.4
331.0	36.45	68.0
332.0	35.83	65.8
333.0	35.74	65.4
334.0	35.75	65.5
335.0	35.20	63.5
336.0	34.67	61.7
337.0	34.21	60.1
338.0	33.33	57.3
339.0	32.89	56.1
340.0	32.77	55.7
341.0	32.06	53.7
342.0	30.95	50.6
343.0	29.86	47.5
344.0	29.76	47.2
345.0	29.36	46.1
346.0	29.24	45.7
347.0	29.52	46.6
348.0	30.30	48.7
349.0	30.92	50.5
350.0	31.19	51.3
351.0	31.27	51.5
352.0	31.94	53.4
353.0	32.39	54.6
354.0	31.96	53.4
355.0	31.85	53.1
356.0	32.03	53.6
357.0	32.10	53.8
358.0	32.22	54.1
359.0	31.54	52.2

Average HAAT for radials shown: 55.0 m

WMUU-FM (License) F(50,50) 60.0 dBuV/m Contour – 3 Sec Terrain

Call Letters: WMUU-FM
 File Number: BLH20080425ABD
 Latitude: 34-56-29 N
 Longitude: 082-24-41 W
 ERP: 100.00 kW
 Channel: 233
 Frequency: 94.5 MHz
 AMSL Height: 760.0 m
 Elevation: 624.0 m
 HAAT: 454.0 m
 Horiz. Antenna Pattern: Omni

Type of contour: FCC
 Location Variability: 50.0 %
 Time Variability: 50.0 %
 # of Radials Calculated: 360
 Field Strength: 60.00 dBuV/m

Primary Terrain: 3 Second US Terrain

Bearing (deg)	Distance (km)	HAAT (m)
0.0	82.07	431.3
1.0	82.14	432.3
2.0	82.10	431.7
3.0	82.35	435.2
4.0	82.55	437.9
5.0	82.83	441.8
6.0	83.08	445.1
7.0	83.02	444.4
8.0	82.97	443.7
9.0	83.10	445.4
10.0	83.07	445.1
11.0	83.07	445.0
12.0	83.27	447.8
13.0	83.37	449.2
14.0	83.40	449.6
15.0	83.46	450.4
16.0	83.59	452.2
17.0	83.64	453.0
18.0	83.57	452.0
19.0	83.49	450.8
20.0	83.40	449.6
21.0	83.37	449.2
22.0	83.33	448.6
23.0	83.37	449.2
24.0	83.30	448.2
25.0	83.29	448.1
26.0	83.45	450.3
27.0	83.57	451.9
28.0	83.58	452.0
29.0	83.49	450.8
30.0	83.35	449.0
31.0	83.43	450.0
32.0	83.61	452.4
33.0	83.74	454.3
34.0	83.84	455.7

WMUU-FM (License) F(50,50) 60.0 dBuV/m Contour – 3 Sec Terrain

35.0	83.98	457.6
36.0	84.11	459.4
37.0	84.28	461.8
38.0	84.27	461.7
39.0	84.25	461.5
40.0	84.26	461.6
41.0	84.35	462.9
42.0	84.42	463.8
43.0	84.46	464.5
44.0	84.46	464.5
45.0	84.48	464.8
46.0	84.45	464.4
47.0	84.42	463.8
48.0	84.45	464.3
49.0	84.47	464.6
50.0	84.47	464.6
51.0	84.55	465.8
52.0	84.71	468.1
53.0	84.76	468.8
54.0	84.71	468.2
55.0	84.73	468.4
56.0	84.74	468.6
57.0	84.79	469.4
58.0	84.91	471.1
59.0	84.97	472.1
60.0	84.96	471.8
61.0	84.94	471.6
62.0	85.01	472.6
63.0	85.04	473.1
64.0	85.05	473.2
65.0	85.05	473.3
66.0	85.01	472.6
67.0	84.98	472.2
68.0	84.99	472.3
69.0	84.97	472.1
70.0	84.95	471.8
71.0	84.92	471.2
72.0	84.86	470.4
73.0	84.76	468.9
74.0	84.63	466.9
75.0	84.43	464.0
76.0	84.16	460.2
77.0	84.00	457.8
78.0	83.86	455.9
79.0	83.83	455.6
80.0	83.95	457.3
81.0	84.07	458.9
82.0	84.09	459.2
83.0	84.13	459.8
84.0	84.13	459.8
85.0	84.04	458.5
86.0	83.82	455.3
87.0	83.60	452.3
88.0	83.60	452.4
89.0	83.69	453.6
90.0	83.75	454.4
91.0	83.91	456.6

WMUU-FM (License) F(50,50) 60.0 dBuV/m Contour – 3 Sec Terrain

92.0	83.99	457.7
93.0	84.10	459.3
94.0	84.21	460.8
95.0	84.35	462.9
96.0	84.53	465.4
97.0	84.67	467.5
98.0	84.73	468.4
99.0	84.86	470.3
100.0	85.04	473.1
101.0	85.15	474.8
102.0	85.21	475.7
103.0	85.24	476.1
104.0	85.27	476.7
105.0	85.35	477.8
106.0	85.43	479.1
107.0	85.52	480.5
108.0	85.54	480.9
109.0	85.46	479.6
110.0	85.34	477.7
111.0	85.18	475.2
112.0	85.03	472.9
113.0	84.91	471.2
114.0	84.80	469.5
115.0	84.70	468.0
116.0	84.68	467.7
117.0	84.67	467.5
118.0	84.69	467.8
119.0	84.78	469.2
120.0	84.86	470.4
121.0	84.80	469.4
122.0	84.72	468.2
123.0	84.69	467.9
124.0	84.67	467.5
125.0	84.63	466.9
126.0	84.56	465.8
127.0	84.42	463.8
128.0	84.26	461.5
129.0	84.16	460.2
130.0	84.11	459.4
131.0	84.06	458.7
132.0	84.02	458.2
133.0	83.94	457.0
134.0	83.76	454.5
135.0	83.55	451.7
136.0	83.33	448.7
137.0	83.11	445.6
138.0	82.94	443.2
139.0	82.75	440.6
140.0	82.57	438.2
141.0	82.48	437.0
142.0	82.40	435.9
143.0	82.27	434.0
144.0	82.21	433.3
145.0	82.31	434.6
146.0	82.35	435.2
147.0	82.37	435.5
148.0	82.33	434.9

WMUU-FM (License) F(50,50) 60.0 dBuV/m Contour – 3 Sec Terrain

149.0	82.27	434.0
150.0	82.28	434.1
151.0	82.37	435.5
152.0	82.59	438.4
153.0	82.62	438.8
154.0	82.58	438.3
155.0	82.69	439.8
156.0	82.89	442.6
157.0	83.17	446.4
158.0	83.42	449.9
159.0	83.65	453.1
160.0	83.84	455.7
161.0	84.03	458.3
162.0	84.16	460.1
163.0	84.29	462.0
164.0	84.52	465.3
165.0	84.76	468.8
166.0	84.73	468.4
167.0	84.67	467.5
168.0	84.67	467.5
169.0	84.64	467.0
170.0	84.53	465.5
171.0	84.47	464.6
172.0	84.47	464.6
173.0	84.51	465.2
174.0	84.54	465.6
175.0	84.49	464.9
176.0	84.47	464.6
177.0	84.46	464.5
178.0	84.49	464.9
179.0	84.52	465.4
180.0	84.55	465.8
181.0	84.56	466.0
182.0	84.55	465.8
183.0	84.51	465.2
184.0	84.46	464.4
185.0	84.47	464.6
186.0	84.44	464.1
187.0	84.41	463.7
188.0	84.37	463.1
189.0	84.34	462.8
190.0	84.36	463.0
191.0	84.36	463.1
192.0	84.35	462.9
193.0	84.32	462.5
194.0	84.33	462.5
195.0	84.32	462.5
196.0	84.31	462.3
197.0	84.29	462.0
198.0	84.34	462.7
199.0	84.46	464.4
200.0	84.55	465.8
201.0	84.64	467.0
202.0	84.68	467.7
203.0	84.64	467.1
204.0	84.69	467.8
205.0	84.81	469.7

WMUU-FM (License) F(50,50) 60.0 dBuV/m Contour – 3 Sec Terrain

206.0	84.86	470.4
207.0	84.88	470.7
208.0	84.91	471.1
209.0	84.99	472.4
210.0	85.04	473.2
211.0	84.91	471.1
212.0	84.82	469.8
213.0	84.84	470.1
214.0	84.85	470.2
215.0	84.87	470.5
216.0	84.80	469.5
217.0	84.65	467.2
218.0	84.62	466.8
219.0	84.66	467.4
220.0	84.65	467.3
221.0	84.69	467.8
222.0	84.66	467.3
223.0	84.57	466.1
224.0	84.61	466.6
225.0	84.80	469.5
226.0	85.06	473.3
227.0	84.99	472.4
228.0	84.82	469.7
229.0	84.74	468.6
230.0	84.69	467.8
231.0	84.70	468.0
232.0	84.90	470.9
233.0	85.03	472.9
234.0	85.00	472.5
235.0	84.74	468.6
236.0	84.59	466.3
237.0	84.46	464.5
238.0	84.42	463.9
239.0	84.35	462.8
240.0	84.07	458.9
241.0	83.85	455.8
242.0	83.78	454.8
243.0	83.86	456.0
244.0	83.84	455.6
245.0	83.84	455.7
246.0	83.74	454.3
247.0	83.54	451.6
248.0	83.45	450.2
249.0	83.50	451.0
250.0	83.71	453.8
251.0	83.96	457.3
252.0	84.04	458.4
253.0	84.03	458.3
254.0	84.05	458.5
255.0	83.99	457.7
256.0	83.82	455.5
257.0	83.68	453.4
258.0	83.66	453.2
259.0	83.79	454.9
260.0	83.81	455.3
261.0	83.73	454.2
262.0	83.69	453.6

WMUU-FM (License) F(50,50) 60.0 dBuV/m Contour – 3 Sec Terrain

263.0	83.67	453.4
264.0	83.55	451.7
265.0	83.48	450.7
266.0	83.44	450.1
267.0	83.48	450.6
268.0	83.62	452.6
269.0	83.81	455.3
270.0	83.90	456.5
271.0	83.89	456.3
272.0	83.79	455.0
273.0	83.74	454.3
274.0	83.69	453.6
275.0	83.79	455.1
276.0	83.76	454.6
277.0	83.73	454.2
278.0	83.63	452.8
279.0	83.58	452.0
280.0	83.51	451.1
281.0	83.54	451.5
282.0	83.58	452.1
283.0	83.49	450.8
284.0	83.36	449.0
285.0	83.24	447.3
286.0	83.22	447.1
287.0	83.27	447.8
288.0	83.26	447.7
289.0	83.29	448.1
290.0	83.36	449.1
291.0	83.27	447.8
292.0	83.29	448.0
293.0	83.39	449.4
294.0	83.38	449.3
295.0	83.32	448.4
296.0	83.26	447.6
297.0	83.26	447.7
298.0	83.25	447.5
299.0	83.24	447.4
300.0	83.26	447.6
301.0	83.28	447.9
302.0	83.28	447.9
303.0	83.25	447.6
304.0	83.24	447.4
305.0	83.17	446.4
306.0	82.89	442.6
307.0	82.74	440.5
308.0	82.69	439.8
309.0	82.53	437.6
310.0	82.41	436.0
311.0	82.56	438.0
312.0	82.50	437.1
313.0	82.44	436.4
314.0	82.43	436.3
315.0	82.43	436.2
316.0	82.51	437.3
317.0	82.58	438.3
318.0	82.24	433.7
319.0	82.07	431.3

WMUU-FM (License) F(50,50) 60.0 dBuV/m Contour – 3 Sec Terrain

320.0	82.01	430.5
321.0	82.07	431.3
322.0	82.13	432.2
323.0	82.33	434.8
324.0	82.39	435.7
325.0	82.13	432.2
326.0	81.88	428.7
327.0	82.01	430.4
328.0	82.15	432.4
329.0	82.16	432.6
330.0	82.12	432.0
331.0	82.29	434.4
332.0	82.60	438.5
333.0	82.83	441.7
334.0	82.68	439.7
335.0	82.39	435.7
336.0	82.27	434.1
337.0	81.97	430.0
338.0	81.72	426.6
339.0	81.62	425.2
340.0	81.47	423.1
341.0	81.18	419.3
342.0	81.04	417.3
343.0	81.05	417.5
344.0	81.09	417.9
345.0	81.05	417.5
346.0	81.05	417.5
347.0	81.17	419.1
348.0	81.41	422.4
349.0	81.46	423.1
350.0	81.53	423.9
351.0	81.50	423.6
352.0	81.47	423.2
353.0	81.50	423.5
354.0	81.68	426.0
355.0	81.65	425.6
356.0	81.65	425.5
357.0	81.74	426.9
358.0	81.93	429.4
359.0	82.02	430.7

Average HAAT for radials shown: 454.6 m

WMUU-FM (License) F(50,10) 40.0 dBuV/m Contour – 3 Sec Terrain

Call Letters: WMUU-FM
 File Number: BLH20080425ABD
 Latitude: 34-56-29 N
 Longitude: 082-24-41 W
 ERP: 100.00 kW
 Channel: 233
 Frequency: 94.5 MHz
 AMSL Height: 760.0 m
 Elevation: 624.0 m
 HAAT: 454.0 m
 Horiz. Antenna Pattern: Omni

Type of contour: FCC
 Location Variability: 50.0 %
 Time Variability: 10.0 %
 # of Radials Calculated: 360
 Field Strength: 40.00 dBuV/m

Primary Terrain: 3 Second US Terrain

Bearing (deg)	Distance (km)	HAAT (m)
-----	-----	-----
0.0	185.59	431.3
1.0	185.67	432.3
2.0	185.62	431.7
3.0	185.91	435.2
4.0	186.13	437.9
5.0	186.45	441.8
6.0	186.72	445.1
7.0	186.66	444.4
8.0	186.60	443.7
9.0	186.74	445.4
10.0	186.72	445.1
11.0	186.71	445.0
12.0	186.93	447.8
13.0	187.04	449.2
14.0	187.07	449.6
15.0	187.14	450.4
16.0	187.28	452.2
17.0	187.33	453.0
18.0	187.26	452.0
19.0	187.17	450.8
20.0	187.07	449.6
21.0	187.04	449.2
22.0	187.00	448.6
23.0	187.04	449.2
24.0	186.96	448.2
25.0	186.95	448.1
26.0	187.13	450.3
27.0	187.25	451.9
28.0	187.26	452.0
29.0	187.17	450.8
30.0	187.02	449.0
31.0	187.11	450.0
32.0	187.29	452.4
33.0	187.44	454.3
34.0	187.54	455.7

WMUU-FM (License) F(50,10) 40.0 dBuV/m Contour – 3 Sec Terrain

35.0	187.69	457.6
36.0	187.82	459.4
37.0	188.00	461.8
38.0	187.99	461.7
39.0	187.97	461.5
40.0	187.98	461.6
41.0	188.08	462.9
42.0	188.15	463.8
43.0	188.20	464.5
44.0	188.20	464.5
45.0	188.22	464.8
46.0	188.19	464.4
47.0	188.15	463.8
48.0	188.18	464.3
49.0	188.20	464.6
50.0	188.21	464.6
51.0	188.29	465.8
52.0	188.46	468.1
53.0	188.51	468.8
54.0	188.47	468.2
55.0	188.48	468.4
56.0	188.50	468.6
57.0	188.55	469.4
58.0	188.68	471.1
59.0	188.75	472.1
60.0	188.73	471.8
61.0	188.71	471.6
62.0	188.78	472.6
63.0	188.82	473.1
64.0	188.83	473.2
65.0	188.83	473.3
66.0	188.79	472.6
67.0	188.76	472.2
68.0	188.76	472.3
69.0	188.75	472.1
70.0	188.73	471.8
71.0	188.68	471.2
72.0	188.63	470.4
73.0	188.52	468.9
74.0	188.37	466.9
75.0	188.16	464.0
76.0	187.88	460.2
77.0	187.70	457.8
78.0	187.56	455.9
79.0	187.53	455.6
80.0	187.66	457.3
81.0	187.78	458.9
82.0	187.80	459.2
83.0	187.85	459.8
84.0	187.85	459.8
85.0	187.75	458.5
86.0	187.51	455.3
87.0	187.28	452.3
88.0	187.29	452.4
89.0	187.38	453.6
90.0	187.44	454.4
91.0	187.61	456.6

WMUU-FM (License) F(50,10) 40.0 dBuV/m Contour – 3 Sec Terrain

92.0	187.70	457.7
93.0	187.81	459.3
94.0	187.92	460.8
95.0	188.08	462.9
96.0	188.26	465.4
97.0	188.42	467.5
98.0	188.48	468.4
99.0	188.62	470.3
100.0	188.82	473.1
101.0	188.94	474.8
102.0	189.01	475.7
103.0	189.04	476.1
104.0	189.08	476.7
105.0	189.16	477.8
106.0	189.25	479.1
107.0	189.35	480.5
108.0	189.38	480.9
109.0	189.29	479.6
110.0	189.15	477.7
111.0	188.97	475.2
112.0	188.81	472.9
113.0	188.68	471.2
114.0	188.56	469.5
115.0	188.45	468.0
116.0	188.43	467.7
117.0	188.41	467.5
118.0	188.44	467.8
119.0	188.54	469.2
120.0	188.63	470.4
121.0	188.55	469.4
122.0	188.47	468.2
123.0	188.44	467.9
124.0	188.41	467.5
125.0	188.37	466.9
126.0	188.29	465.8
127.0	188.15	463.8
128.0	187.98	461.5
129.0	187.88	460.2
130.0	187.82	459.4
131.0	187.77	458.7
132.0	187.73	458.2
133.0	187.64	457.0
134.0	187.45	454.5
135.0	187.23	451.7
136.0	187.00	448.7
137.0	186.76	445.6
138.0	186.57	443.2
139.0	186.36	440.6
140.0	186.16	438.2
141.0	186.06	437.0
142.0	185.97	435.9
143.0	185.82	434.0
144.0	185.75	433.3
145.0	185.86	434.6
146.0	185.91	435.2
147.0	185.93	435.5
148.0	185.89	434.9

WMUU-FM (License) F(50,10) 40.0 dBuV/m Contour – 3 Sec Terrain

149.0	185.82	434.0
150.0	185.82	434.1
151.0	185.94	435.5
152.0	186.18	438.4
153.0	186.21	438.8
154.0	186.17	438.3
155.0	186.29	439.8
156.0	186.52	442.6
157.0	186.82	446.4
158.0	187.09	449.9
159.0	187.34	453.1
160.0	187.54	455.7
161.0	187.74	458.3
162.0	187.87	460.1
163.0	188.01	462.0
164.0	188.26	465.3
165.0	188.51	468.8
166.0	188.48	468.4
167.0	188.42	467.5
168.0	188.42	467.5
169.0	188.38	467.0
170.0	188.27	465.5
171.0	188.20	464.6
172.0	188.21	464.6
173.0	188.25	465.2
174.0	188.27	465.6
175.0	188.23	464.9
176.0	188.20	464.6
177.0	188.20	464.5
178.0	188.23	464.9
179.0	188.26	465.4
180.0	188.29	465.8
181.0	188.30	466.0
182.0	188.29	465.8
183.0	188.25	465.2
184.0	188.19	464.4
185.0	188.21	464.6
186.0	188.17	464.1
187.0	188.14	463.7
188.0	188.09	463.1
189.0	188.07	462.8
190.0	188.09	463.0
191.0	188.09	463.1
192.0	188.08	462.9
193.0	188.05	462.5
194.0	188.05	462.5
195.0	188.05	462.5
196.0	188.03	462.3
197.0	188.01	462.0
198.0	188.06	462.7
199.0	188.19	464.4
200.0	188.29	465.8
201.0	188.38	467.0
202.0	188.43	467.7
203.0	188.39	467.1
204.0	188.44	467.8
205.0	188.57	469.7

WMUU-FM (License) F(50,10) 40.0 dBuV/m Contour – 3 Sec Terrain

206.0	188.62	470.4
207.0	188.65	470.7
208.0	188.68	471.1
209.0	188.77	472.4
210.0	188.83	473.2
211.0	188.68	471.1
212.0	188.58	469.8
213.0	188.60	470.1
214.0	188.61	470.2
215.0	188.63	470.5
216.0	188.56	469.5
217.0	188.39	467.2
218.0	188.36	466.8
219.0	188.41	467.4
220.0	188.40	467.3
221.0	188.44	467.8
222.0	188.40	467.3
223.0	188.31	466.1
224.0	188.35	466.6
225.0	188.56	469.5
226.0	188.84	473.3
227.0	188.77	472.4
228.0	188.58	469.7
229.0	188.49	468.6
230.0	188.44	467.8
231.0	188.46	468.0
232.0	188.66	470.9
233.0	188.81	472.9
234.0	188.78	472.5
235.0	188.50	468.6
236.0	188.33	466.3
237.0	188.20	464.5
238.0	188.15	463.9
239.0	188.07	462.8
240.0	187.78	458.9
241.0	187.55	455.8
242.0	187.48	454.8
243.0	187.57	456.0
244.0	187.54	455.6
245.0	187.54	455.7
246.0	187.43	454.3
247.0	187.23	451.6
248.0	187.12	450.2
249.0	187.18	451.0
250.0	187.40	453.8
251.0	187.66	457.3
252.0	187.75	458.4
253.0	187.74	458.3
254.0	187.76	458.5
255.0	187.69	457.7
256.0	187.52	455.5
257.0	187.37	453.4
258.0	187.35	453.2
259.0	187.48	454.9
260.0	187.51	455.3
261.0	187.43	454.2
262.0	187.39	453.6

WMUU-FM (License) F(50,10) 40.0 dBuV/m Contour – 3 Sec Terrain

263.0	187.36	453.4
264.0	187.23	451.7
265.0	187.16	450.7
266.0	187.11	450.1
267.0	187.15	450.6
268.0	187.31	452.6
269.0	187.51	455.3
270.0	187.60	456.5
271.0	187.59	456.3
272.0	187.49	455.0
273.0	187.44	454.3
274.0	187.38	453.6
275.0	187.49	455.1
276.0	187.46	454.6
277.0	187.43	454.2
278.0	187.32	452.8
279.0	187.26	452.0
280.0	187.19	451.1
281.0	187.22	451.5
282.0	187.26	452.1
283.0	187.17	450.8
284.0	187.03	449.0
285.0	186.90	447.3
286.0	186.88	447.1
287.0	186.93	447.8
288.0	186.92	447.7
289.0	186.95	448.1
290.0	187.03	449.1
291.0	186.93	447.8
292.0	186.95	448.0
293.0	187.06	449.4
294.0	187.05	449.3
295.0	186.98	448.4
296.0	186.92	447.6
297.0	186.92	447.7
298.0	186.91	447.5
299.0	186.90	447.4
300.0	186.92	447.6
301.0	186.94	447.9
302.0	186.94	447.9
303.0	186.91	447.6
304.0	186.90	447.4
305.0	186.82	446.4
306.0	186.51	442.6
307.0	186.35	440.5
308.0	186.29	439.8
309.0	186.11	437.6
310.0	185.98	436.0
311.0	186.15	438.0
312.0	186.07	437.1
313.0	186.01	436.4
314.0	186.00	436.3
315.0	186.00	436.2
316.0	186.08	437.3
317.0	186.17	438.3
318.0	185.78	433.7
319.0	185.59	431.3

WMUU-FM (License) F(50,10) 40.0 dBuV/m Contour – 3 Sec Terrain

320.0	185.52	430.5
321.0	185.59	431.3
322.0	185.66	432.2
323.0	185.88	434.8
324.0	185.96	435.7
325.0	185.66	432.2
326.0	185.37	428.7
327.0	185.52	430.4
328.0	185.68	432.4
329.0	185.69	432.6
330.0	185.65	432.0
331.0	185.84	434.4
332.0	186.19	438.5
333.0	186.44	441.7
334.0	186.28	439.7
335.0	185.95	435.7
336.0	185.82	434.1
337.0	185.48	430.0
338.0	185.19	426.6
339.0	185.07	425.2
340.0	184.90	423.1
341.0	184.57	419.3
342.0	184.40	417.3
343.0	184.41	417.5
344.0	184.45	417.9
345.0	184.42	417.5
346.0	184.42	417.5
347.0	184.55	419.1
348.0	184.83	422.4
349.0	184.89	423.1
350.0	184.96	423.9
351.0	184.93	423.6
352.0	184.90	423.2
353.0	184.93	423.5
354.0	185.14	426.0
355.0	185.11	425.6
356.0	185.10	425.5
357.0	185.22	426.9
358.0	185.43	429.4
359.0	185.53	430.7

Average HAAT for radials shown: 454.6 m

Kessler and Gehman Associates, Inc.
Telecommunications Consulting Engineers

W250AC Channel 250 FM Interference Study
Georgia Public Telecommunications Commission
Average Protected F(50-50)= 9.82 km
Omni-directional

REFERENCE
33 56 42.0 N.
83 22 38.0 W.

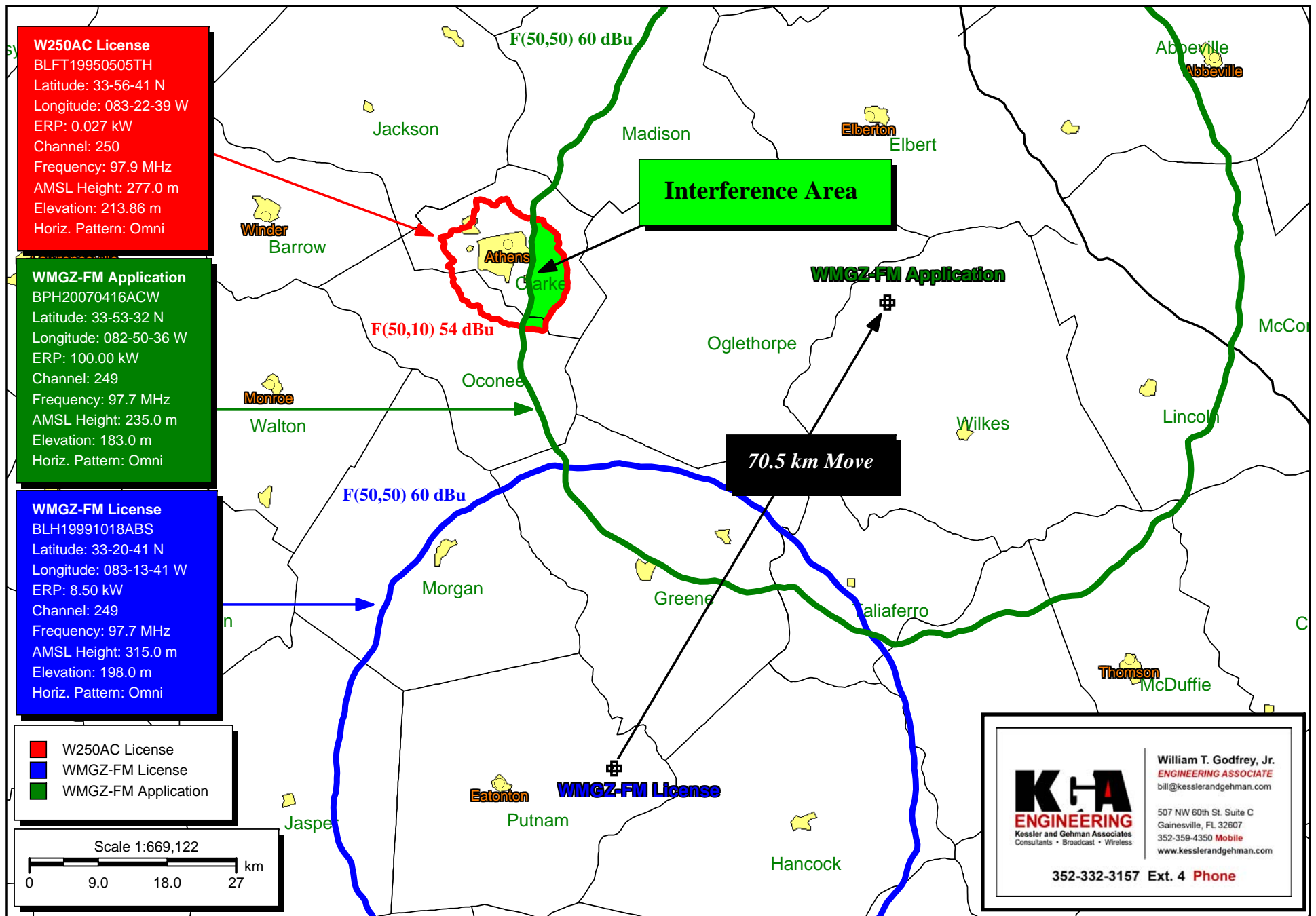
CH# 250D - 97.9 MHz, Pwr= 0.25 kW, HAAT= 55.7 M, COR= 277 M
Average Protected F(50-50)= 9.82 km
Omni-directional

DISPLAY DATES
DATA 01-22-13
SEARCH 01-24-13

CH CITY	CALL	TYPE STATE	ANT <--	AZI FILE #	DIST FILE #	LAT LNG	PWR(kW) HAAT(M)	INT(km) COR(M)	PRO(km) LICENSEE	*IN* (Overlap in km)	*OUT*
249C1 Lexington One Step Application	WMGZ	RSV-A GA	266.5	86.2	38.02	33 58 00.0 82 58 00.0	100.000 299	101.2 464	69.1 Southern Stone Broadcasting	-72.1*<	-43.7*<
250D Athens Translator for WUGA, Athens, GA.	W250AC	LIC_CN GA	266.5	220.1	0.04	33 56 41.0 83 22 39.0	0.027 56	14.6 277	4.6 Georgia Public Telecommuni	-24.5*<	-38.1*<
249C1 Lexington One Step Application	WMGZ	APP NCX GA	276.9	96.6	49.71	33 53 32.0 82 50 36.0	100.000 77	76.2 235	46.5 Southern Stone Broadcasting	-36.0*<	-10.1*<
249C2 Lexington Reallot from 249C3 @ Eatonton, GA. Alternate site	AL2364	RSV-A GA	281.0	100.6	56.48	33 51 00.0 82 46 38.0	50.000 150	78.2 307	52.2	-31.4*<	-9.4*<
251C0 Williamston	WHZT	LIC_CX SC	203.6	23.4	89.85	34 41 15.0 82 59 13.0	100.000 304	103.9 554	71.4 Cox Radio, Inc.	-21.1*<	8.3
249C2 Washington One Step Application	WMGZ	RSV-A GA	291.3	110.9	65.23	33 44 02.0 82 43 10.0	50.000 150	73.7 300	48.3 Southern Stone Broadcasting	-18.7*<	2.7
249C3 Eatonton	ALLO	USE GA	355.4	175.4	62.40	33 23 03.0 83 19 22.0	25.000 100	59.5 254	38.5	-7.8*<	8.8
249C2 Washington	WMGZ	APP_CX GA	291.3	110.9	65.23	33 44 02.0 82 43 10.0	50.000 90	60.6 238	36.6 Southern Stone Broadcasting	-5.6*<	14.4
251C1 Williamston	WHZT	APP_ZCX SC	220.3	39.9	109.98	34 42 07.0 82 36 19.0	93.000 308	106.2 572	73.2 Cox Radio, Inc.	-4.2*<	25.4
249C3 Eatonton	WMGZ	LIC_C_ GA	348.4	168.3	68.00	33 20 41.0 83 13 41.0	8.500 169	59.6 315	40.3 Southern Stone Broadcasting	-3.0*<	11.2
253C Atlanta Coordinates updated from LIC record	ALLO	USE GA	76.6	257.2	91.01	33 45 35.0 84 20 07.0	100.000 600	13.5 883	91.1	67.9	-1.2*<
253C0 Atlanta	AL1313	RSV-A GA	76.6	257.1	90.97	33 45 33.0 84 20 05.0	100.000 450	12.0 733	82.1	69.4	7.7
249D Buford	W248AG	APP DC_ GA	111.7	292.0	55.19	34 07 47.0 83 55 56.0	0.250	35.0 595	23.4 Tugart Properties, Lic	10.0	17.6
249D Buford	W248AG	CP DC_ GA	111.7	292.0	55.19	34 07 47.0 83 55 56.0	0.250	34.9 595	23.3 Tugart Properties, Lic	10.1	17.7
250D Atlanta	W250BC	LIC_C_ GA	79.9	260.5	90.32	33 48 26.0 84 20 22.0	0.250 303	66.3 588	21.9 Cumulus Licensing Lic	14.2	35.9
248D Commerce	W248AG	LIC_C_ GA	149.2	329.3	26.99	34 09 14.0 83 31 38.0	0.038 57	0.4 300	7.0 Tugart Properties, Lic	16.2	18.9
253C0 Atlanta Reclassified from Class C to C0 per MB Docket 03-77, DA 04-1026	WSB-FM	LIC_CN GA	76.6	257.1	90.97	33 45 33.0 84 20 05.0	100.000 313	10.0 594	71.8 Cox Radio, Inc.	71.3	18.0
249D Toccoa	W249CC	LIC DC_ GA	180.1	0.1	64.82	34 31 46.0 83 22 33.0	0.250 261	35.8 568	23.8 Tugart Properties, Lic	20.0	28.3
250C3 Fort Valley	ALLO	USE GA	12.1	192.3	157.70	32 33 20.0 83 44 14.0	25.000 100	111.5 218	37.0	36.0	86.6
250C3 Fort Valley	WIBB-FM	LIC_CN GA	12.9	193.1	156.55	32 34 12.0 83 45 26.0	10.500 152	102.2 271	37.5 Amfm Radio Licenses, L.I.C	44.2	84.8
248D Gainesville	628643	APP_C_ GA	131.9	312.1	60.01	34 18 22.0 83 51 42.0	0.019 84	0.3 430	6.7 Augusta Radio Fellowship I	51.3	52.2
250D Thomson	W250AQ	LIC_C_ GA	301.3	120.8	94.79	33 30 20.0 82 30 00.0	0.027 72	20.6 208	6.2 Augusta Radio Fellowship I	63.5	52.1
252D Washington	W252BH	LIC_C_ GA	292.6	112.2	65.44	33 43 16.0 82 43 23.0	0.027 45	0.4 193	4.1 Radio Training Network, In	54.7	60.2

CH CITY	CALL	TYPE STATE	ANT	AZI <--	DIST FILE #	LAT LNG	PWR(kW) HAAT (M)	INT(km) COR (M)	PRO(km) LICENSEE	Page # 2 *IN* (Overlap in km)	*OUT*
250C2	ALLO Blackville	USE SC	___	116.0 297.1	206.55	33 06 52.0 81 23 13.0	50.000 150	137.4 209	51.9	58.5	118.8
250C2	WILZ Blackville	LIC SC	_CN	116.0 297.1	206.55 BLH19960502KB	33 06 52.0 81 23 13.0	50.000 132	134.7 189	49.1 Nicwild Communications, Inc	61.3	121.6
248D	639042 Cumming	APP GA	_C_	294.7 114.3	78.83 BNPFT20030314AIA	34 14 18.0 84 09 19.0	0.010 199	0.2 549	8.5 Community Public Radio, Inc	68.3	69.2
248C3	ALLO Fayetteville	USE GA	___	240.8 60.2	116.63	33 25 42.0 84 28 22.0	25.000 100	4.0 365	38.6	102.8	76.9
248C3	WUMJ Fayetteville	LIC GA	_C_	246.0 65.3	122.59 BMLH20021031ABB	33 29 29.0 84 35 00.0	7.900 175	3.7 448	38.4 Roa Licenses, LLC	108.9	83.0
247D	W247BR Anderson	LIC SC	_C_	46.8 227.2	92.90 BLFT20110930AVW	34 30 53.0 82 38 17.0	0.027	0.4 311	7.5 Bible Broadcasting Network	84.5	84.3
250C	WPEG Concord	LIC NC	DCY	51.6 232.8	257.30 BLH19901207KC	35 21 44.0 81 09 19.0	95.000 491	160.2 727	70.5 Cbs Radio Stations Inc.	88.9	159.5
250C	ALLO Concord	USE NC	___	56.5 238.0	300.98	35 24 29.0 80 36 41.0	100.000 600	197.9 800	91.9	94.7	181.1
Coordinates updated from LIC record BLH830610AB											
252C3	WHHD Clearwater	LIC SC	ZCX	111.5 292.2	129.45 BLH20051104ACY	33 30 44.0 82 04 48.0	11.500 148	3.0 243	32.2 Waec License Limited Partn	116.1	96.1
249L1	WHZK-LP Greenwood	LIC SC	___	76.4 257.1	116.66 BLL20050505AAR	34 11 08.0 82 08 49.0	0.036 49	8.6 220	6.0 South Carolina Mass Choir	99.8	98.9
251C3	AL8025 East Dublin	RSV-A GA	___	157.7 338.1	166.19 RM9775*	32 33 28.0 82 42 10.0	25.000 100	54.0 190	33.6	99.8	114.2
Counterproposal, site 17 kms east											

Terrain database is USGS 03 SEC , R= 73.215 qualifying spacings or FCC minimum Spacings in KM, M= Margin in KM
Contour distances are on direct line to and from reference station. Reference zone= , Co to 3rd adjacent.
All separation margins (if shown) include rounding
Ant Column: (D= DA Standard, Z= DA 73.215, N= Not DA 73.215, _= Omni), Polarization (C,H,V,E), Beamtilt(Y,N,X)
"***affixed to 'IN' or 'OUT' values = site inside protected contour.
< = Contour Overlap



WMGZ-FM License, WMGZ-FM Application & W250AC License

Kessler and Gehman Associates, Inc.
Telecommunications Consulting Engineers

W250AC Channel 249 FM Interference Study
Georgia Public Telecommunications Commission
Average Protected F(50-50)= 9.82 km
Omni-directional

REFERENCE
33 56 42.0 N.
83 22 38.0 W.

CH# 249D - 97.7 MHz, Pwr= 0.25 kW, HAAT= 55.7 M, COR= 277 M

DISPLAY DATES
DATA 01-22-13
SEARCH 01-24-13

CH CITY	CALL	TYPE STATE	ANT ---	AZI <--	DI ST FILE #	LAT LNG	PWR(kW) HAAT(M)	INT(km) COR(M)	PRO(km) LICENSEE	*IN* (Overlap in km)	*OUT*
249C1 Lexington One Step Application	WMGZ	RSV-A GA	---	86.2 266.5	38.02	33 58 00.0 82 58 00.0	100.000 299	168.3 464	69.1 Southern Stone Broadcastin	-139.2*<	-60.9*<
249C1 Lexington One Step Application	WMGZ	APP NCX GA	---	96.6 276.9	49.71 BPH20070416ACW	33 53 32.0 82 50 36.0	100.000 77	142.7 235	46.5 Southern Stone Broadcastin	-102.5*<	-28.4<
249C2 Lexington Reallot from 249C3 @ Eatonton, GA. Alternate site	AL2364	RSV-A GA	---	100.6 281.0	56.48 RM11086	33 51 00.0 82 46 38.0	50.000 150	137.8 307	52.2	-91.0*<	-28.4<
249C2 Washington One Step Application	WMGZ	RSV-A GA	---	110.9 291.3	65.23	33 44 02.0 82 43 10.0	50.000 150	133.9 300	48.3 Southern Stone Broadcastin	-78.9*<	-17.5<
249C2 Washington	WMGZ	APP _CX GA	---	110.9 291.3	65.23 BPH20070416ACW	33 44 02.0 82 43 10.0	50.000 90	123.1 238	36.6 Southern Stone Broadcastin	-68.1*<	-5.9<
249C3 Eatonton	ALLO	USE GA	---	175.4 355.4	62.40	33 23 03.0 83 19 22.0	25.000 100	113.0 254	38.5	-61.3*<	-12.4<
249C3 Eatonton	WMGZ	LIC _C_ GA	---	168.3 348.4	68.00 BLH19991018ABS	33 20 41.0 83 13 41.0	8.500 169	104.3 315	40.3 Southern Stone Broadcastin	-47.7*<	-11.3<
246C Gainesville Coordinates updated from LIC record	ALLO	USE GA	---	294.5 114.2	48.75 BLH840907CR	34 07 32.0 83 51 31.0	100.000 600	14.4 916	94.0 24.1	-46.3*<	
246C Gainesville	WSRV	LIC _CY GA	---	294.5 114.2	48.78 BLH19980825KB	34 07 32.0 83 51 32.0	100.000 483	12.9 797	89.0 Cox Radio, Inc.	25.6	-41.3*<
249D Buford	W248AG	APP DC_ GA	---	292.0 111.7	55.19 BMPFT20121129BNF	34 07 47.0 83 55 56.0	0.250	70.2 595	23.4 Tugart Properties, LIC	-25.2*<	-2.5<
249D Buford	W248AG	CP DC_ GA	---	292.0 111.7	55.19 BPFT20120829ADW	34 07 47.0 83 55 56.0	0.250	70.0 595	23.3 Tugart Properties, LIC	-25.1*<	-2.4<
250D Athens Translator for WUGA, Athens, GA. -	W250AC	LIC _CN GA	---	220.1 40.1	0.04 BLFT19950505TH	33 56 41.0 83 22 39.0	0.027 56	6.5 277	4.6 Georgia Public Telecommuni	-16.5*<	-18.5*<
249D Toccoa	W249CC	LIC DC_ GA	---	0.1 180.1	64.82 BLFT20090206AFA	34 31 46.0 83 22 33.0	0.250 261	71.4 568	23.8 Tugart Properties, LIC	-15.7*<	10.9
246C0 Gainesville	WSRV	APP _CX GA	---	287.9 107.6	62.41 BPH20070118ACV	34 06 57.0 84 01 16.0	100.000 305	10.0 634	71.7 Cox Radio, Inc.	41.4	-10.4*<
246C0 Gainesville	WSRV	APP _CX GA	---	287.9 107.6	62.41 BPH20070118ACV	34 06 57.0 84 01 16.0	100.000 305	10.0 634	71.7 Cox Radio, Inc.	41.4	-10.4*<
248D Commerce	W248AG	LIC _C_ GA	---	329.3 149.2	26.99 BLFT20070315ABZ	34 09 14.0 83 31 38.0	0.038 57	10.0 300	7.0 Tugart Properties, LIC	6.6	5.6
251C0 Williamston	WHZT	LIC _CX SC	---	23.4 203.6	89.85 BLH20120905ACG	34 41 15.0 82 59 13.0	100.000 304	9.9 554	71.4 Cox Radio, Inc.	72.8	17.3
251C1 Williamston	WHZT	APP ZCX SC	---	39.9 220.3	109.98 BPH20121213AAA	34 42 07.0 82 36 19.0	93.000 308	10.3 572	73.2 Cox Radio, Inc.	91.7	35.7
248D Gainesville	628643	APP _C_ GA	---	312.1 131.9	60.01 BNPFT20030310ADB	34 18 22.0 83 51 42.0	0.019 84	9.5 430	6.7 Augusta Radio Fellowship I	42.2	41.5
248C3 Fayetteville	ALLO	USE GA	---	240.8 60.2	116.63	33 25 42.0 84 28 22.0	25.000 100	59.7 365	38.6 47.1	64.3	
250D Atlanta	W250BC	LIC _C_ GA	---	260.5 79.9	90.32 BLFT20090416AVM	33 48 26.0 84 20 22.0	0.250 303	32.6 588	21.9 Cumulus Licensing LIC	48.0	54.9
252D Washington	W252BH	LIC _C_ GA	---	112.2 292.6	65.44 BLFT20070514ABD	33 43 16.0 82 43 23.0	0.027 45	0.4 193	4.1 Radio Training Network, In	54.7	60.2
248C3 Fayetteville	WUMJ	LIC _C_ GA	---	246.0 65.3	122.59 BMLH20021031ABB	33 29 29.0 84 35 00.0	7.900 175	57.0 448	38.4 Roa Licenses, LIC	55.6	70.2

Page # 2

CH CI TY	CALL	TYPE STATE	ANT	AZI <--	DI ST FI LE #	LAT LNG	PWR(kW) HAAT (M)	INT(km) COR (M)	PRO(km) LI CENSEE	*IN* (Overl ap in km)	*OUT*
248D Cummi ng	639042	APP _C_ GA		294. 7 114. 3	78. 83 BNPFT20030314AIA	34 14 18. 0 84 09 19. 0	0. 010 199	12. 0 549	8. 5 Communi ty Public Radio, In	56. 5	56. 0
249C3 Rome	WGPB	LIC ZCX GA		281. 2 100. 2	173. 98 BMLD20080407ABR	34 14 05. 0 85 13 48. 0	4. 200 241	97. 3 459	37. 4 Georgi a Public Tel ecommuni	66. 0	100. 5
250D Thomson	W250AQ	LIC _C_ GA		120. 8 301. 3	94. 79 BLFT20040722ACU	33 30 20. 0 82 30 00. 0	0. 027 72	8. 8 208	6. 2 Augusta Radio Fel lowship I	75. 2	73. 4
249L1 Greenwood	WHZK-LP	LIC ____ SC		76. 4 257. 1	116. 66 BLL20050505AAR	34 11 08. 0 82 08 49. 0	0. 036 49	20. 2 220	6. 0 South Caroli na Mass Choir	88. 2	83. 0
247D Anderson	W247BR	LIC _C_ SC		46. 8 227. 2	92. 90 BLFT20110930AVW	34 30 53. 0 82 38 17. 0	0. 027	0. 4 311	7. 5 Bible Broadcasting Network	84. 5	84. 3
248C Knoxville Coordinates updated from LIC record	ALLO TN	USE ____ TN		347. 7 167. 4	234. 62 BLH890928KC	36 00 36. 0 83 55 57. 0	100. 000 600	138. 0 912	92. 9	87. 5	128. 9
250C3 Fort Valley	ALLO	USE ____ GA		192. 3 12. 1	157. 70	32 33 20. 0 83 44 14. 0	25. 000 100	57. 9 218	37. 0	89. 7	106. 6
250C3 Fort Valley	WIBB-FM	LIC _CN GA		193. 1 12. 9	156. 55 BMLH19990112KB	32 34 12. 0 83 45 26. 0	10. 500 152	56. 3 271	37. 5 Amfm Radi o Li censes, L. I. c	90. 0	104. 9
248D Hi wassee	W248BJ	LIC _C_ GA		344. 0 163. 8	116. 49 BLFT20091013AAL	34 57 13. 0 83 43 50. 0	0. 010 228	12. 4 981	8. 8 Wjul Radi o, LI c	95. 1	95. 0
252C3 Clearwater	WHHD	LIC ZCX SC		111. 5 292. 2	129. 45 BLH20051104ACY	33 30 44. 0 82 04 48. 0	11. 500 148	3. 0 243	32. 2 Waec Li cense Li mi ted Partn	116. 1	96. 1

Terrain database is USGS 03 SEC , R= 73.215 qualifying spacings or FCC minimum Spacings in KM, M= Margin in KM
Contour distances are on direct line to and from reference station. Reference zone= , Co to 3rd adjacent.
All separation margins (if shown) include rounding
Ant Column: (D= DA Standard, Z= DA 73.215, N= Not DA 73.215, _= Omni), Polarization (C,H,V,E), Beamtilt(Y,N,X)
""affixed to 'IN' or 'OUT' values = site inside protected contour.
< = Contour Overlap

Kessler and Gehman Associates, Inc.
Telecommunications Consulting Engineers

W250AC Channel 248 FM Interference Study
Georgia Public Telecommunications Commission
Average Protected F(50-50)= 9.82 km
Omni-directional

REFERENCE
33 56 42.0 N.
83 22 38.0 W.

CH# 248D - 97.5 MHz, Pwr= 0.25 kW, HAAT= 55.7 M, COR= 277 M

DISPLAY DATES
DATA 01-22-13
SEARCH 01-24-13

CH CITY	CALL	TYPE STATE	ANT ---	AZI <--	DIST FILE #	LAT LNG	PWR(kW) HAAT(M)	INT(km) COR(M)	PRO(km) LICENSEE	*IN* (Overlap in km)	*OUT*
249C1 Lexington One Step Application	WMGZ	RSV-A GA	---	86.2 266.5	38.02	33 58 00.0 82 58 00.0	100.000 299	101.2 464	69.1 Southern Stone Broadcasting	-72.1*<	-43.7*<
246C Gainesville Coordinates updated from LIC record	ALLO	USE GA	---	294.5 114.2	48.75 BLH840907CR	34 07 32.0 83 51 31.0	100.000 600	14.4 916	94.0	24.1	-46.3*<
246C Gainesville	WSRV	LIC GA	_CY	294.5 114.2	48.78 BLH19980825KB	34 07 32.0 83 51 32.0	100.000 483	12.9 797	89.0 Cox Radio, Inc.	25.6	-41.3*<
249C1 Lexington One Step Application	WMGZ	APP GA	NCX	96.6 276.9	49.71 BPH20070416ACW	33 53 32.0 82 50 36.0	100.000 77	76.2 235	46.5 Southern Stone Broadcasting	-36.0*<	-10.1*<
249C2 Lexington Reallot from 249C3 @ Eatonton, GA. Alternate site	AL2364	RSV-A GA	---	100.6 281.0	56.48 RM11086	33 51 00.0 82 46 38.0	50.000 150	78.2 307	52.2	-31.4*<	-9.4*<
249C2 Washington One Step Application	WMGZ	RSV-A GA	---	110.9 291.3	65.23	33 44 02.0 82 43 10.0	50.000 150	73.7 300	48.3 Southern Stone Broadcasting	-18.7*<	2.7
248D Commerce	W248AG	LIC GA	_C_	329.3 149.2	26.99 BLFT20070315ABZ	34 09 14.0 83 31 38.0	0.038 57	23.5 300	7.0 Tugart Properties, LIC	-6.8*<	-14.8*<
246C0 Gainesville	WSRV	APP GA	_CX	287.9 107.6	62.41 BPH20070118ACV	34 06 57.0 84 01 16.0	100.000 305	10.0 634	71.7 Cox Radio, Inc.	41.4	-10.4*<
246C0 Gainesville	WSRV	APP GA	_CX	287.9 107.6	62.41 BPH20070118ACV	34 06 57.0 84 01 16.0	100.000 305	10.0 634	71.7 Cox Radio, Inc.	41.4	-10.4*<
250D Athens Translator for WUGA, Athens, GA. -	W250AC	LIC GA	_CN	220.1 40.1	0.04 BLFT19950505TH	33 56 41.0 83 22 39.0	0.027 56	0.4 277	4.6 Georgia Public Telecommuni	-10.3*<	-5.7*<
249C3 Eatonton	ALLO	USE GA	---	175.4 355.4	62.40	33 23 03.0 83 19 22.0	25.000 100	59.5 254	38.5	-7.8*<	8.8
248C3 Fayetteville	ALLO	USE GA	---	240.8 60.2	116.63	33 25 42.0 84 28 22.0	25.000 100	113.1 365	38.6	-6.4*<	45.1
249C2 Washington	WMGZ	APP GA	_CX	110.9 291.3	65.23 BPH20070416ACW	33 44 02.0 82 43 10.0	50.000 90	60.6 238	36.6 Southern Stone Broadcasting	-5.6*<	14.4
249C3 Eatonton	WMGZ	LIC GA	_C_	168.3 348.4	68.00 BLH19991018ABS	33 20 41.0 83 13 41.0	8.500 169	59.6 315	40.3 Southern Stone Broadcasting	-3.0*<	11.2
249D Buford	W248AG	APP GA	DC_	292.0 111.7	55.19 BMPFT20121129BNF	34 07 47.0 83 55 56.0	0.250	35.0 595	23.4 Tugart Properties, LIC	10.0	17.6
249D Buford	W248AG	CP GA	DC_	292.0 111.7	55.19 BPFT20120829ADW	34 07 47.0 83 55 56.0	0.250	34.9 595	23.3 Tugart Properties, LIC	10.1	17.7
248C3 Fayetteville	WUMJ	LIC GA	_C_	246.0 65.3	122.59 BMLH20021031ABB	33 29 29.0 84 35 00.0	7.900 175	101.3 448	38.4 Roa Licenses, LIC	11.3	50.7
251C0 Williamston	WHZT	LIC SC	_CX	23.4 203.6	89.85 BLH20120905ACG	34 41 15.0 82 59 13.0	100.000 304	9.9 554	71.4 Cox Radio, Inc.	72.8	17.3
249D Toccoa	W249CC	LIC GA	DC_	0.1 180.1	64.82 BLFT20090206AFA	34 31 46.0 83 22 33.0	0.250 261	35.8 568	23.8 Tugart Properties, LIC	20.0	28.3
248D Gainesville	628643	APP GA	_C_	312.1 131.9	60.01 BNPFT20030310ADB	34 18 22.0 83 51 42.0	0.019 84	22.3 430	6.7 Augusta Radio Fellowship I	29.3	25.5
248C Knoxville Coordinates updated from LIC record	ALLO	USE TN	---	347.7 167.4	234.62 BLH890928KC	36 00 36.0 83 55 57.0	100.000 600	199.7 912	92.9	25.8	111.4
248C1 Columbia	ALLO	USE SC	---	83.6 264.9	215.41	34 08 23.0 81 03 22.0	100.000 299	172.1 395	72.5	34.7	114.3
248C1 Columbia	WCOS-FM	LIC SC	_CN	83.6 264.9	215.41 BLH19900927KC	34 08 23.0 81 03 22.0	100.000 299	171.8 392	72.2 Capstar Tx LIC	35.0	114.6

CH CITY	CALL	TYPE STATE	ANT	AZI <--	DIST FILE #	LAT LNG	PWR(kW) HAAT(M)	INT(km) COR(M)	PRO(km) LICENSEE	*IN* (Overlap in km)	*OUT*
248D Cumming	639042	APP _C_ GA		294.7 114.3	78.83 BNPFT20030314AIA	34 14 18.0 84 09 19.0	0.010 199	28.4 549	8.5 Community Public Radio, Inc.	40.1	35.7
251C1 Williamston	WHZT	APP ZCX SC		39.9 220.3	109.98 BPH20121213AAA	34 42 07.0 82 36 19.0	93.000 308	10.3 572	73.2 Cox Radio, Inc.	91.7	35.7
248C Knoxville	WJXB-FM	LIC _CY TN		347.7 167.4	234.62 BLH19890928KCC	36 00 36.0 83 55 57.0	100.000 395	184.8 706	81.5 South Central Communicatio	40.7	122.9
250D Atlanta	W250BC	LIC _C_ GA		260.5 79.9	90.32 BLFT20090416AVM	33 48 26.0 84 20 22.0	0.250 303	1.1 588	21.9 Cumulus Licensing Lic	79.5	67.3
247D Anderson	W247BR	LIC _C_ SC		46.8 227.2	92.90 BLFT20110930AVW	34 30 53.0 82 38 17.0	0.027	10.6 311	7.5 Bible Broadcasting Network	74.3	74.0
248D Hiawassee	W248BJ	LIC _C_ GA		344.0 163.8	116.49 BLFT20091013AAL	34 57 13.0 83 43 50.0	0.010 228	29.4 981	8.8 Wjul Radio, Lic	78.1	77.7
250D Thomson	W250AQ	LIC _C_ GA		120.8 301.3	94.79 BLFT20040722ACU	33 30 20.0 82 30 00.0	0.027 72	0.4 208	6.2 Augusta Radio Fellowship I	83.7	87.5
245D Milledgeville	W245AN	LIC _C_ GA		174.9 354.9	98.58 BLFT20070514ABA	33 03 35.0 83 16 56.0	0.019 85	0.3 203	6.0 Radio Training Network, Inc	87.5	91.5
245C3 Wrens	ALLO	USE ____ GA		128.5 309.1	128.36	33 13 20.0 82 17 50.0	25.000 100	3.9 213	38.0	113.4	89.2
247D Macon	651213	APP _C_ GA		191.6 11.5	115.77 BNPFT20030317LTY	32 55 21.0 83 37 40.0	0.055 160	15.8 289	11.0 American Family Associatio	89.9	90.7
245C3 Wrens	WTHB-FM	LIC NCX GA		127.6 308.2	124.21 BLH20070123ABV	33 15 32.2 82 19 10.1	6.200 121	3.1 241	32.4 Perry Broadcasting Of Augu	110.1	90.7
245D Abbeville	629413	APP _C_ SC		74.2 254.8	100.82 BNPFT20030310AEF	34 11 13.0 82 19 28.0	0.027 44	0.4 207	4.6 Augusta Radio Fellowship I	91.9	95.1
248A Eastman	ALLO	USE ____ GA		175.6 355.6	191.16	32 13 35.0 83 13 10.0	6.000 100	86.5 197	28.2	94.0	126.7
248A Eastman	WUFF-FM	LIC _C_ GA		175.5 355.6	191.70 BLH20080304ABL	32 13 18.0 83 13 04.0	4.620 113	84.7 211	28.2 Dodge Broadcasting, Inc.	96.3	127.2
249L1 Greenwood	WHZK-LP	LIC ____ SC		76.4 257.1	116.66 BLL20050505AAR	34 11 08.0 82 08 49.0	0.036 49	8.6 220	6.0 South Carolina Mass Choir	99.8	98.9

Terrain database is USGS 03 SEC , R= 73.215 qualifying spacings or FCC minimum Spacings in KM, M= Margin in KM
Contour distances are on direct line to and from reference station. Reference zone= , Co to 3rd adjacent.

All separation margins (if shown) include rounding

Ant Column: (D= DA Standard, Z= DA 73.215, N= Not DA 73.215, _= Omni), Polarization (C,H,V,E), Beamtilt(Y,N,X)

"*"affixed to 'IN' or 'OUT' values = site inside protected contour.

< = Contour Overlap

Kessler and Gehman Associates, Inc.
Telecommunications Consulting Engineers

W250AC Channel 247 FM Interference Study
Georgia Public Telecommunications Commission
Pwr= 0.25 kW, HAAT= 55.7 M, COR= 277 M
Average Protected F(50-50)= 9.82 km
Omni-directional

DISPLAY DATES
DATA 01-22-13
SEARCH 01-24-13

REFERENCE
33 56 42.0 N.
83 22 38.0 W.

CH# 247D - 97.3 MHz

CH CITY	CALL	TYPE STATE	ANT AZI <--	DIST FILE #	LAT LNG	PWR(kW) HAAT(M)	INT(km) COR(M)	PRO(km) LICENSEE	*IN* (Overlap in km)	*OUT*
246C ALLO	Gainesville	USE ____ GA	294.5 114.2	48.75	34 07 32.0 83 51 31.0	100.000 600	139.4 916	94.0	-100.9*<	-59.5*<
Coordinates updated from LIC record BLH840907CR										
246C WSRV	Gainesville	LIC _CY GA	294.5 114.2	48.78	34 07 32.0 83 51 32.0	100.000 483	132.9 797	89.0	-94.4*<	-54.5*<
BLH19980825KB Cox Radio, Inc.										
246C0 WSRV	Gainesville	APP _CX GA	287.9 107.6	62.41	34 06 57.0 84 01 16.0	100.000 305	104.2 634	71.7	-52.8*<	-24.9*<
BPH20070118ACV Cox Radio, Inc.										
246C0 WSRV	Gainesville	APP _CX GA	287.9 107.6	62.41	34 06 57.0 84 01 16.0	100.000 305	104.2 634	71.7	-52.8*<	-24.9*<
BPH20070118ACV Cox Radio, Inc.										
249C1 WMGZ	Lexington	RSV-A ____ GA	86.2 266.5	38.02	33 58 00.0 82 58 00.0	100.000 299	9.4 464	69.1	19.6	-32.2*<
One Step Application Southern Stone Broadcastin										
250D W250AC	Athens	LIC _CN GA	220.1 40.1	0.04	33 56 41.0 83 22 39.0	0.027 56	0.4 277	4.6	-10.3*<	-5.7*<
Translator for WUGA, Athens, GA. - BLFT19950505TH Georgia Public Telecommuni										
249C1 WMGZ	Lexington	APP NCX GA	96.6 276.9	49.71	33 53 32.0 82 50 36.0	100.000 77	5.2 235	46.5	35.0	2.1
One Step Application Southern Stone Broadcastin										
249C2 AL2364	Lexington	RSV-A ____ GA	100.6 281.0	56.48	33 51 00.0 82 46 38.0	50.000 150	6.0 307	52.2	40.7	3.1
Reallot from 249C3 @ Eatonton, GA. Alternate site RM11086										
248D W248AG	Commerce	LIC _C_ GA	329.3 149.2	26.99	34 09 14.0 83 31 38.0	0.038 57	10.0 300	7.0	6.6	5.6
BLFT20070315ABZ Tugart Properties, Lic										
249C2 WMGZ	Washington	RSV-A ____ GA	110.9 291.3	65.23	33 44 02.0 82 43 10.0	50.000 150	5.4 300	48.3	49.6	15.9
One Step Application Southern Stone Broadcastin										
244A R15032	Tignal	DEL ____ GA	92.0 272.3	51.91	33 55 40.0 82 48 58.0	6.000 100	2.8 249	28.3	40.0	22.5
substituted by 287A. Georgia-carolina Radiocast										
244A AL3801	Tignal	VAC ____ GA	92.0 272.3	51.91	33 55 40.0 82 48 58.0	6.000 100	2.8 249	28.3	40.0	22.5
Site Restriction: 9.8 km Northwest. RM10525 Georgia-carolina Radiocast										
249C3 ALLO	Eatonton	USE ____ GA	175.4 355.4	62.40	33 23 03.0 83 19 22.0	25.000 100	4.0 254	38.5	47.7	22.8
244A ALLO	Tignal	USE ____ GA	88.7 269.0	48.90	33 57 15.0 82 50 54.0	6.000 100	2.4 254	24.7	37.4	23.1
One Step Application										
244A WSGC-FM	Tignal	CP ZCX GA	84.8 265.1	56.05	33 59 22.0 82 46 23.0	6.000 100	2.8 242	29.1	44.5	25.9
One Step Application Georgia-carolina Radiocast										
249C3 WMGZ	Eatonton	LIC _C_ GA	168.3 348.4	68.00	33 20 41.0 83 13 41.0	8.500 169	3.9 315	40.3	52.7	26.5
BLH19991018ABS Southern Stone Broadcastin										
249C2 WMGZ	Washington	APP _CX GA	110.9 291.3	65.23	33 44 02.0 82 43 10.0	50.000 90	3.8 238	36.6	51.2	27.5
BPH20070416ACW Southern Stone Broadcastin										
249D W248AG	Buford	APP DC_ GA	292.0 111.7	55.19	34 07 47.0 83 55 56.0	0.250	1.1 595	23.4	43.9	30.7
BMPFT20121129BNF Tugart Properties, Lic										
249D W248AG	Buford	CP DC_ GA	292.0 111.7	55.19	34 07 47.0 83 55 56.0	0.250	1.1 595	23.3	43.9	30.8
BPFT20120829ADW Tugart Properties, Lic										
249D W249CC	Toccoa	LIC DC_ GA	0.1 180.1	64.82	34 31 46.0 83 22 33.0	0.250 261	1.1 568	23.8	54.6	39.9
BLFT20090206AFA Tugart Properties, Lic										
248D 628643	Gainesville	APP _C_ GA	312.1 131.9	60.01	34 18 22.0 83 51 42.0	0.019 84	9.5 430	6.7	42.2	41.5
BNPFT20030310ADB Augusta Radio Fellowshi p I										
248C3 ALLO	Fayetteville	USE ____ GA	240.8 60.2	116.63	33 25 42.0 84 28 22.0	25.000 100	59.7 365	38.6	47.1	64.3

CH CITY	CALL	TYPE STATE	ANT	AZI <--	DIST FILE #	LAT LNG	PWR(kW) HAAT(M)	INT(km) COR(M)	PRO(km) LICENSEE	Page # *IN* (Overlap	2 *OUT* in km)
248C3 Fayetteville	WUMJ	LIC _C_ GA		246.0 65.3	122.59 BMLH20021031ABB	33 29 29.0 84 35 00.0	7.900 175	57.0 448	38.4 Roa Licenses, Lic	55.6	70.2
248D Cumming	639042	APP _C_ GA		294.7 114.3	78.83 BNPFT20030314AIA	34 14 18.0 84 09 19.0	0.010 199	12.0 549	8.5 Community Public Radio, Inc	56.5	56.0
247D Anderson	W247BR	LIC _C_ SC		46.8 227.2	92.90 BLFT20110930AVW	34 30 53.0 82 38 17.0	0.027	25.1 311	7.5 Bible Broadcasting Network	59.8	58.5
244D Clarksville	W244CQ	LIC _C_ GA		348.7 168.6	74.95 BLFT20110706AAF	34 36 27.0 83 32 15.0	0.250	1.1 441	7.1 Wchm Radio, Lic.	64.5	66.8
250D Atlanta	W250BC	LIC _C_ GA		260.5 79.9	90.32 BLFT20090416AVM	33 48 26.0 84 20 22.0	0.250 303	1.1 588	21.9 Cumulus Licensing Lic	79.5	67.3
247D Macon	651213	APP _C_ GA		191.6 11.5	115.77 BNPFT20030317LTY	32 55 21.0 83 37 40.0	0.055 160	36.8 289	11.0 American Family Associatio	68.8	70.8
247C Savannah Coordinates updated from LIC record	ALLO	USE ____ GA		137.3 318.4	282.95 BLH840614CW	32 03 30.0 81 20 20.0	100.000 600	197.6 607	91.7 74.5		154.2
250D Thomson	W250AQ	LIC _C_ GA		120.8 301.3	94.79 BLFT20040722ACU	33 30 20.0 82 30 00.0	0.027 72	0.4 208	6.2 Augusta Radio Fellowship I	83.7	87.5
247D Macon	631613	APP _C_ GA		192.7 12.5	125.37 BNPFT20030314BVV	32 50 31.0 83 40 19.0	0.120 33	20.2 151	6.1 Cleveland Radio Licenses,	95.0	85.2
248C Knoxville Coordinates updated from LIC record	ALLO	USE ____ TN		347.7 167.4	234.62 BLH890928KC	36 00 36.0 83 55 57.0	100.000 600	138.0 912	92.9 87.5		128.9
245D Milledgeville	W245AN	LIC _C_ GA		174.9 354.9	98.58 BLFT20070514ABA	33 03 35.0 83 16 56.0	0.019 85	0.3 203	6.0 Radio Training Network, Inc	87.5	91.5
245C3 Wrens	ALLO	USE ____ GA		128.5 309.1	128.36	33 13 20.0 82 17 50.0	25.000 100	3.9 213	38.0 113.4		89.2
247C0 Savannah	WAEV	LIC _CX GA		137.5 318.6	283.87 BLH20020604AAW	32 02 45.0 81 20 27.0	100.000 396	182.3 402	79.3 Capstar Tx Lic	90.7	167.6
245C3 Wrens	WTHB-FM	LIC NCX GA		127.6 308.2	124.21 BLH20070123ABV	33 15 32.2 82 19 10.1	6.200 121	3.1 241	32.4 Perry Broadcasting Of Augu	110.1	90.7
245D Abbeville	629413	APP _C_ SC		74.2 254.8	100.82 BNPFT20030310AEF	34 11 13.0 82 19 28.0	0.027 44	0.4 207	4.6 Augusta Radio Fellowship I	91.9	95.1
244A Peachtree City	WWLG	LIC _C_ GA		245.6 65.0	121.44 BLH20001208AAA	33 29 22.0 84 34 07.0	2.150 168	2.4 442	28.2 Citicasters Licenses, Inc.	109.0	92.2
248D Hiawassee	W248BJ	LIC _C_ GA		344.0 163.8	116.49 BLFT20091013AAL	34 57 13.0 83 43 50.0	0.010 228	12.4 981	8.8 Wjul Radio, Lic	95.1	95.0
247C2 South Pittsburg	ALLO	USE ____ TN		300.5 119.2	243.85	35 02 10.0 85 40 55.0	50.000 150	138.8 479	53.2 95.8		160.1

Terrain database is USGS 03 SEC , R= 73.215 qualifying spacings or FCC minimum Spacings in KM, M= Margin in KM
Contour distances are on direct line to and from reference station. Reference zone= , Co to 3rd adjacent.
All separation margins (if shown) include rounding
Ant Column: (D= DA Standard, Z= DA 73.215, N= Not DA 73.215, _= Omni), Polarization (C,H,V,E), Beamtilt(Y,N,X)
"***"affixed to 'IN' or 'OUT' values = site inside protected contour.
< = Contour Overlap

Kessler and Gehman Associates, Inc.
Telecommunications Consulting Engineers

W250AC Channel 251 FM Interference Study
Georgia Public Telecommunications Commission
Average Protected F(50-50)= 9.82 km
Omni-directional

REFERENCE
33 56 42.0 N.
83 22 38.0 W.

CH# 251D - 98.1 MHz, Pwr= 0.25 kW, HAAT= 55.7 M, COR= 277 M
Average Protected F(50-50)= 9.82 km
Omni-directional

DISPLAY DATES
DATA 01-22-13
SEARCH 01-24-13

CH CITY	CALL	TYPE STATE	ANT AZI <--	DIST FILE #	LAT LNG	PWR(kW) HAAT(M)	INT(km) COR(M)	PRO(km) LICENSEE	*IN* (Overlap in km)	*OUT* (in km)
251C0 WHZT Williamston	LIC _CX SC	23.4 203.6	89.85 BLH20120905ACG	34 41 15.0 82 59 13.0	100.000 304	170.8 554	71.4 Cox Radio, Inc.	-88.0*<	-5.3*<	
251C1 WHZT Williamston	APP ZCX SC	39.9 220.3	109.98 BPH20121213AAA	34 42 07.0 82 36 19.0	93.000 308	172.6 572	73.2 Cox Radio, Inc.	-70.6*<	10.0	
249C1 WMGZ Lexington One Step Application	RSV-A _ GA	86.2 266.5	38.02	33 58 00.0 82 58 00.0	100.000 299	9.4 464	69.1 Southern Stone Broadcastin	19.6	-32.2*<	
250D W250AC Athens Translator for WUGA, Athens, GA. -	LIC _CN GA	220.1 40.1	0.04 BLFT19950505TH	33 56 41.0 83 22 39.0	0.027 56	6.5 277	4.6 Georgia Public Telecommuni	-16.5*<	-18.5*<	
253C ALLO Atlanta Coordinates updated from LIC record	USE _ GA	257.2 76.6	91.01 BLH880922KC	33 45 35.0 84 20 07.0	100.000 600	13.5 883	91.1	67.9	-1.2*<	
249C1 WMGZ Lexington One Step Application	APP NCX GA	96.6 276.9	49.71 BPH20070416ACW	33 53 32.0 82 50 36.0	100.000 77	5.2 235	46.5 Southern Stone Broadcastin	35.0	2.1	
249C2 AL2364 Lexington Reallot from 249C3 @ Eatonton, GA. Alternate site	RSV-A _ GA	100.6 281.0	56.48 RM11086	33 51 00.0 82 46 38.0	50.000 150	6.0 307	52.2	40.7	3.1	
253C0 AL1313 Atlanta	RSV-A _ GA	257.1 76.6	90.97 RM10660	33 45 33.0 84 20 05.0	100.000 450	12.0 733	82.1	69.4	7.7	
249C2 WMGZ Washington One Step Application	RSV-A _ GA	110.9 291.3	65.23	33 44 02.0 82 43 10.0	50.000 150	5.4 300	48.3 Southern Stone Broadcastin	49.6	15.9	
248D W248AG Commerce	LIC _C_ GA	329.3 149.2	26.99 BLFT20070315ABZ	34 09 14.0 83 31 38.0	0.038 57	0.4 300	7.0 Tugart Properties, Lic	16.2	18.9	
253C0 WSB-FM Atlanta Reclassified from Class C to C0 per MB Docket 03-77, DA 04-1026	LIC _CN GA	257.1 76.6	90.97 BLH19980903KB	33 45 33.0 84 20 05.0	100.000 313	10.0 594	71.8 Cox Radio, Inc.	71.3	18.0	
249C3 ALLO Eatonton	USE _ GA	175.4 355.4	62.40	33 23 03.0 83 19 22.0	25.000 100	4.0 254	38.5	47.7	22.8	
249C3 WMGZ Eatonton	LIC _C_ GA	168.3 348.4	68.00 BLH19991018ABS	33 20 41.0 83 13 41.0	8.500 169	3.9 315	40.3 Southern Stone Broadcastin	52.7	26.5	
249C2 WMGZ Washington	APP _CX GA	110.9 291.3	65.23 BPH20070416ACW	33 44 02.0 82 43 10.0	50.000 90	3.8 238	36.6 Southern Stone Broadcastin	51.2	27.5	
249D W248AG Buford	APP DC_ GA	292.0 111.7	55.19 BMPFT20121129BNF	34 07 47.0 83 55 56.0	0.250	1.1 595	23.4 Tugart Properties, Lic	43.9	30.7	
249D W248AG Buford	CP DC_ GA	292.0 111.7	55.19 BPFT20120829ADW	34 07 47.0 83 55 56.0	0.250	1.1 595	23.3 Tugart Properties, Lic	43.9	30.8	
254D W249CC Toccoa	APP _C_ GA	0.1 180.1	64.76 BMPFT20120418ACQ	34 31 44.0 83 22 35.0	0.250	1.1 571	23.9 Tugart Properties, Lic	54.6	39.8	
249D W249CC Toccoa	LIC DC_ GA	0.1 180.1	64.82 BLFT20090206AFA	34 31 46.0 83 22 33.0	0.250 261	1.1 568	23.8 Tugart Properties, Lic	54.6	39.9	
251C3 AL8025 East Dublin Counterproposal, site 17 kms east	RSV-A _ GA	157.7 338.1	166.19 RM9775*	32 33 28.0 82 42 10.0	25.000 100	108.5 190	33.6	45.3	89.9	
252D W252BH Washington	LIC _C_ GA	112.2 292.6	65.44 BLFT20070514ABD	33 43 16.0 82 43 23.0	0.027 45	5.9 193	4.1 Radio Training Network, In	49.2	46.9	
250D W250BC Atlanta	LIC _C_ GA	260.5 79.9	90.32 BLFT20090416AVM	33 48 26.0 84 20 22.0	0.250 303	32.6 588	21.9 Cumulus Li censing Lic	48.0	54.9	
248D 628643 Gainesville	APP _C_ GA	312.1 131.9	60.01 BNPFT20030310ADB	34 18 22.0 83 51 42.0	0.019 84	0.3 430	6.7 Augusta Radio Fellowship I	51.3	52.2	
251C3 WMGP Hogansville	LIC ZC_ GA	236.7 55.8	176.23 BLH19990927AAJ	33 03 54.0 84 57 23.0	25.000 100	111.8 326	37.3 Citi casters Licenses, Inc.	54.6	106.1	

CH CI TY	CALL	TYPE STATE	ANT	AZI <--	DI ST FI LE #	LAT LNG	PWR(kW) HAAT (M)	INT(km) COR (M)	PRO(km) LI CENSEE	Page # 2 *IN* (Overl ap in km)	*OUT*
251C3	WEDB East Dublin	LIC _CX GA		156.2 336.6	169.16 BLH20050309ABQ	32 32 55.0 82 38 49.0	9.600 160	101.7 255	37.7 Radio Jones, LI c	54.8	88.0
251C3	ALLO Hogansville	USE ____ GA		241.8 60.8	180.73	33 09 56.0 85 05 11.0	25.000 100	114.8 310	40.1	56.0	107.3
254A	AU7052594 Lincolnton NULL	USE ____ GA		110.1 290.5	86.05 RM9990	33 40 37.0 82 30 18.0	6.000 100	2.6 230	26.5	73.3	58.4
254D	W254BN Sparta	LIC _C_ GA		153.5 333.7	78.25 BLFT20070514ABC	33 18 48.0 83 00 05.0	0.055 33	0.5 184	4.8 Radio Training Network, In	64.9	72.3
254A	WLCZ Lincolnton	LIC NCX GA		105.7 286.2	82.34 BLH20120604ADO	33 44 32.0 82 31 17.0	0.480 130	1.5 259	15.8 Glory Communications, Inc.	70.9	65.4
248D	639042 Cumming	APP _C_ GA		294.7 114.3	78.83 BNPFT20030314AIA	34 14 18.0 84 09 19.0	0.010 199	0.2 549	8.5 Community Public Radio, In	68.3	69.2
252C3	WHHD Clearwater	LIC ZCX SC		111.5 292.2	129.45 BLH20051104ACY	33 30 44.0 82 04 48.0	11.500 148	48.8 243	32.2 Waec License Limited Partn	70.3	82.9
250D	W250AQ Thomson	LIC _C_ GA		120.8 301.3	94.79 BLFT20040722ACU	33 30 20.0 82 30 00.0	0.027 72	8.8 208	6.2 Augusta Radio Fellowship I	75.2	73.4
252C3	WHHD Clearwater One Step Application	RSV-A ____ SC		113.8 294.5	137.87	33 26 17.0 82 01 10.0	25.000 100	53.4 179	33.1 Waec License Limited Partn	74.0	90.3
248C3	ALLO Fayetteville	USE ____ GA		240.8 60.2	116.63	33 25 42.0 84 28 22.0	25.000 100	4.0 365	38.6 102.8		76.9
251A	ALLO East Dublin	USE ____ GA		147.7 328.3	178.00	32 35 08.0 82 21 42.0	6.000 100	85.3 182	27.2 81.1		111.3
248C3	WUMJ Fayetteville	LIC _C_ GA		246.0 65.3	122.59 BMLH20021031ABB	33 29 29.0 84 35 00.0	7.900 175	3.7 448	38.4 Roa Licenses, LI c	108.9	83.0
250C3	ALLO Fort Valley	USE ____ GA		192.3 12.1	157.70	32 33 20.0 83 44 14.0	25.000 100	57.9 218	37.0 89.7		106.6
250C3	WIBB-FM Fort Valley	LIC _CN GA		193.1 12.9	156.55 BMLH19990112KB	32 34 12.0 83 45 26.0	10.500 152	56.3 271	37.5 Amfm Radio Licenses, L.I. c	90.0	104.9

Terrain database is USGS 03 SEC , R= 73.215 qualifying spacings or FCC minimum Spacings in KM, M= Margin in KM
Contour distances are on direct line to and from reference station. Reference zone= , Co to 3rd adjacent.
All separation margins (if shown) include rounding
Ant Column: (D= DA Standard, Z= DA 73.215, N= Not DA 73.215, _= Omni), Polarization (C,H,V,E), Beamtilt(Y,N,X)
"***affixed to 'IN' or 'OUT' values = site inside protected contour.
< = Contour Overlap

Kessler and Gehman Associates, Inc.
Telecommunications Consulting Engineers

W250AC Channel 252 FM Interference Study
Georgia Public Telecommunications Commission
Average Protected F(50-50)= 9.82 km
Omni-directional

REFERENCE
33 56 42.0 N.
83 22 38.0 W.

CH# 252D - 98.3 MHz, Pwr= 0.25 kW, HAAT= 55.7 M, COR= 277 M

DISPLAY DATES
DATA 01-22-13
SEARCH 01-24-13

CH CITY	CALL	TYPE STATE	ANT AZI <--	DIST FILE #	LAT LNG	PWR(kW) HAAT(M)	INT(km) COR(M)	PRO(km) LICENSEE	*IN* (Overlap in km)	*OUT*
253C Atlanta	ALLO	USE GA	257.2 76.6	91.01	33 45 35.0 84 20 07.0	100.000 600	135.7 883	91.1	-54.3*<	-13.5*<
Coordinates updated from LIC record				BLH880922KC						
253C0 Atlanta	AL1313	RSV-A GA	257.1 76.6	90.97 RM10660	33 45 33.0 84 20 05.0	100.000 450	122.0 733	82.1	-40.7*<	-4.6<
249C1 Lexington	WMGZ	RSV-A GA	86.2 266.5	38.02	33 58 00.0 82 58 00.0	100.000 299	9.4 464	69.1	19.6	-32.2*<
One Step Application				Southern Stone Broadcasting						
253C0 Atlanta	WSB-FM	LIC _CN GA	257.1 76.6	90.97 BLH19980903KB	33 45 33.0 84 20 05.0	100.000 313	104.4 594	71.8	-23.1*<	5.7
Reclassified from Class C to C0 per				MB Docket 03-77, DA 04-1026						
251C0 Williamston	WHZT	LIC _CX SC	23.4 203.6	89.85 BLH20120905ACG	34 41 15.0 82 59 13.0	100.000 304	103.9 554	71.4	-21.1*<	8.3
250D Athens	W250AC	LIC _CN GA	220.1 40.1	0.04 BLFT19950505TH	33 56 41.0 83 22 39.0	0.027 56	0.4 277	4.6	-10.3*<	-5.7*<
Translator for WUGA, Athens, GA. -				Georgia Public Telecommuni						
255D Athens	631604	APP _C_ GA	257.7 77.6	2.02 BNPFT20030317AQU	33 56 28.0 83 23 55.0	0.250 34	1.1 255	7.1	-8.7*<	-6.2*<
				Southern Broadcasting Of P						
255D Athens	649087	APP _C_ GA	287.2 107.2	3.03 BNPFT20030317ETF	33 57 11.0 83 24 31.0	0.019 78	0.3 301	6.4	-8.5*<	-4.5*<
				Georgia-carolina Radiocast						
251C1 Williamston	WHZT	APP ZCX SC	39.9 220.3	109.98 BPH20121213AAA	34 42 07.0 82 36 19.0	93.000 308	106.2 572	73.2	-4.2<	25.4
				Cox Radio, Inc.						
255D Bogart	640105	APP _C_ GA	270.7 90.7	9.86 BNPFT20030317BEF	33 56 46.0 83 29 02.0	0.038 41	0.4 267	5.8	-0.3<	3.0
				Radio Training Network, In						
249C1 Lexington	WMGZ	APP NCX GA	96.6 276.9	49.71 BPH20070416ACW	33 53 32.0 82 50 36.0	100.000 77	5.2 235	46.5	35.0	2.1
One Step Application				Southern Stone Broadcasting						
249C2 Lexington	AL2364	RSV-A GA	100.6 281.0	56.48 RM11086	33 51 00.0 82 46 38.0	50.000 150	6.0 307	52.2	40.7	3.1
Reallot from 249C3 @ Eatonton, GA. Alternate site										
249C2 Washington	WMGZ	RSV-A GA	110.9 291.3	65.23	33 44 02.0 82 43 10.0	50.000 150	5.4 300	48.3	49.6	15.9
One Step Application				Southern Stone Broadcasting						
252C3 Clearwater	WHHD	RSV-A SC	113.8 294.5	137.87	33 26 17.0 82 01 10.0	25.000 100	108.1 179	33.1	19.4	69.5
One Step Application				Waec License Limited Partn						
249C3 Eatonton	ALLO	USE GA	175.4 355.4	62.40	33 23 03.0 83 19 22.0	25.000 100	4.0 254	38.5	47.7	22.8
252D Washington	W252BH	LIC _C_ GA	112.2 292.6	65.44 BLFT20070514ABD	33 43 16.0 82 43 23.0	0.027 45	13.2 193	4.1	41.9	26.3
				Radio Training Network, In						
249C3 Eatonton	WMGZ	LIC _C_ GA	168.3 348.4	68.00 BLH19991018ABS	33 20 41.0 83 13 41.0	8.500 169	3.9 315	40.3	52.7	26.5
				Southern Stone Broadcasting						
249C2 Washington	WMGZ	APP _CX GA	110.9 291.3	65.23 BPH20070416ACW	33 44 02.0 82 43 10.0	50.000 90	3.8 238	36.6	51.2	27.5
				Southern Stone Broadcasting						
252C3 Clearwater	WHHD	LIC ZCX SC	111.5 292.2	129.45 BLH20051104ACY	33 30 44.0 82 04 48.0	11.500 148	91.1 243	32.2	28.1	62.5
				Waec License Limited Partn						
249D Buford	W248AG	APP DC_ GA	292.0 111.7	55.19 BMPFT20121129BNF	34 07 47.0 83 55 56.0	0.250	1.1 595	23.4	43.9	30.7
				Tugart Properties, LIC						
249D Buford	W248AG	CP DC_ GA	292.0 111.7	55.19 BPFT20120829ADW	34 07 47.0 83 55 56.0	0.250	1.1 595	23.3	43.9	30.8
				Tugart Properties, LIC						
254D Toccoa	W249CC	APP _C_ GA	0.1 180.1	64.76 BMPFT20120418ACQ	34 31 44.0 83 22 35.0	0.250	1.1 571	23.9	54.6	39.8
				Tugart Properties, LIC						
249D Toccoa	W249CC	LIC DC_ GA	0.1 180.1	64.82 BLFT20090206AFA	34 31 46.0 83 22 33.0	0.250 261	1.1 568	23.8	54.6	39.9
				Tugart Properties, LIC						

CH CI TY	CALL	TYPE STATE	ANT	AZI <--	DI ST FI LE #	LAT LNG	PWR(kW) HAAT (M)	INT(km) COR (M)	PRO(km) LI CENSEE	Page # 2 *IN* (Overl ap in km)	*OUT*
254A Li ncol nton NULL	AU7052594	USE ____ GA		110. 1 290. 5	86. 05 RM9990	33 40 37. 0 82 30 18. 0	6. 000 100	2. 6 230	26. 5	73. 3	58. 4
254D Sparta	W254BN	LIC _C_ GA		153. 5 333. 7	78. 25 BLFT20070514ABC	33 18 48. 0 83 00 05. 0	0. 055 33	0. 5 184	4. 8 Radi o Trai ni ng Network, In	64. 9	72. 3
254A Li ncol nton	WLCZ	LIC NCX GA		105. 7 286. 2	82. 34 BLH20120604ADO	33 44 32. 0 82 31 17. 0	0. 480 130	1. 5 259	15. 8 Gl ory Communi cati ons, Inc.	70. 9	65. 4
250D Atl anta	W250BC	LIC _C_ GA		260. 5 79. 9	90. 32 BLFT20090416AVM	33 48 26. 0 84 20 22. 0	0. 250 303	1. 1 588	21. 9 Cumul us Li censi ng LI c	79. 5	67. 3
255D Atl anta	W255CJ	LIC DC_ GA		260. 5 79. 9	90. 32 BLFT20110915ACL	33 48 26. 0 84 20 22. 0	0. 250	0. 8 588	18. 2 Cumul us Li censi ng LI c	79. 8	71. 1
255C Spartanburg Coordinates updated from LIC record	ALLO	USE ____ SC		35. 8 216. 5	168. 54 BLH7774	35 10 12. 0 82 17 27. 0	100. 000 600	14. 4 1034	94. 0	146. 5	73. 4
255C Spartanburg	WSPA-FM	LIC _C_ SC		35. 8 216. 5	168. 50 BLH19991026ACQ	35 10 11. 0 82 17 28. 0	100. 000 580	14. 2 1016	93. 3 Entercom Greenvi lle Li censi	146. 6	74. 0
250D Thomson	W250AQ	LIC _C_ GA		120. 8 301. 3	94. 79 BLFT20040722ACU	33 30 20. 0 82 30 00. 0	0. 027 72	0. 4 208	6. 2 Augusta Radi o Fel lowshi p I	83. 7	87. 5
255D Thomson	W255AS	LIC _V_ GA		117. 5 298. 1	103. 69 BLFT20120529AKT	33 30 37. 0 82 23 12. 0	0. 175	0. 9 143	6. 5 Edgewater Broadcasti ng Inc	92. 0	96. 1
251C3 East Dublin Counterproposal, site 17 kms east	AL8025	RSV-A ____ GA		157. 7 338. 1	166. 19 RM9775*	32 33 28. 0 82 42 10. 0	25. 000 100	54. 0 190	33. 6	99. 8	114. 2

Terrain database is USGS 03 SEC , R= 73.215 qualifying spacings or FCC minimum Spacings in KM, M= Margin in KM
Contour distances are on direct line to and from reference station. Reference zone= , Co to 3rd adjacent.
All separation margins (if shown) include rounding
Ant Column: (D= DA Standard, Z= DA 73.215, N= Not DA 73.215, _= Omni), Polarization (C,H,V,E), Beamtilt(Y,N,X)
"*"affixed to 'IN' or 'OUT' values = site inside protected contour.
< = Contour Overlap

Kessler and Gehman Associates, Inc.
Telecommunications Consulting Engineers

W250AC Channel 253 FM Interference Study
Georgia Public Telecommunications Commission
Average Protected F(50-50)= 9.82 km
Omni-directional

REFERENCE
33 56 42.0 N.
83 22 38.0 W.

CH# 253D - 98.5 MHz, Pwr= 0.25 kW, HAAT= 55.7 M, COR= 277 M
Average Protected F(50-50)= 9.82 km
Omni-directional

DISPLAY DATES
DATA 01-22-13
SEARCH 01-24-13

CH CITY	CALL	TYPE STATE	ANT <--	AZI FILE #	DIST LNG	PWR(kW) HAAT(M)	INT(km) COR(M)	PRO(km) LICENSEE	*IN* (Overlap in km)	*OUT*
253C Atlanta	ALLO	USE GA	257.2 76.6	91.01 RM10660	33 45 35.0 84 20 07.0	100.000 600	196.5 883	91.1	-115.2*<	-32.2*<
Coordinates updated from LIC record BLH880922KC										
253C0 Atlanta	AL1313	RSV-A GA	257.1 76.6	90.97 RM10660	33 45 33.0 84 20 05.0	100.000 450	185.5 733	82.1	-104.2*<	-23.3<
253C0 Atlanta	WSB-FM	LIC_CN GA	257.1 76.6	90.97 BLH19980903KB	33 45 33.0 84 20 05.0	100.000 313	171.3 594	71.8	-89.9*<	-13.0<
Reclassified from Class C to C0 per MB Docket 03-77, DA 04-1026										
250D Athens	W250AC	LIC_CN GA	220.1 40.1	0.04 BLFT19950505TH	33 56 41.0 83 22 39.0	0.027 56	0.4 277	4.6	-10.3*<	-5.7*<
Translator for WUGA, Athens, GA. -										
255D Athens	631604	APP_C_ GA	257.7 77.6	2.02 BNPFT20030317AQU	33 56 28.0 83 23 55.0	0.250 34	1.1 255	7.1	-8.7*<	-6.2*<
Southern Broadcasting Of P										
255D Athens	649087	APP_C_ GA	287.2 107.2	3.03 BNPFT20030317ETF	33 57 11.0 83 24 31.0	0.019 78	0.3 301	6.4	-8.5*<	-4.5*<
Georgia-carolina Radiocast										
255D Bogart	640105	APP_C_ GA	270.7 90.7	9.86 BNPFT20030317BEF	33 56 46.0 83 29 02.0	0.038 41	0.4 267	5.8	-0.3<	3.0
Radio Training Network, Inc.										
251C0 Williamston	WHZT	LIC_CX SC	23.4 203.6	89.85 BLH20120905ACG	34 41 15.0 82 59 13.0	100.000 304	9.9 554	71.4	72.8	17.3
Cox Radio, Inc.										
254D Toccoa	W249CC	APP_C_ GA	0.1 180.1	64.76 BMPFT20120418ACQ	34 31 44.0 83 22 35.0	0.250 36.0	571	23.9	19.7	28.1
Tugart Properties, LLC										
254A Lincolnton	AU7052594	USE GA	110.1 290.5	86.05 RM9990	33 40 37.0 82 30 18.0	6.000 100	40.9 230	26.5	35.0	45.4
NULL										
251C1 Williamston	WHZT	APP_ZCX SC	39.9 220.3	109.98 BPH20121213AAA	34 42 07.0 82 36 19.0	93.000 308	10.3 572	73.2	91.7	35.7
Cox Radio, Inc.										
252D Washington	W252BH	LIC_C_ GA	112.2 292.6	65.44 BLFT20070514ABD	33 43 16.0 82 43 23.0	0.027 45	5.9 193	4.1	49.2	46.9
Radio Training Network, Inc.										
254A Lincolnton	WLCZ	LIC_NCX GA	105.7 286.2	82.34 BLH20120604ADO	33 44 32.0 82 31 17.0	0.480 130	23.7 259	15.8	48.7	52.7
Glory Communications, Inc.										
254D Sparta	W254BN	LIC_C_ GA	153.5 333.7	78.25 BLFT20070514ABC	33 18 48.0 83 00 05.0	0.055 33	6.9 184	4.8	58.6	54.3
Radio Training Network, Inc.										
256C1 Macon	ALLO	USE GA	187.3 7.2	133.30 BLH860106KC	32 45 10.0 83 33 32.0	100.000 299	9.9 415	71.1	113.2	61.1
Coordinates updated from LIC record										
250D Atlanta	W250BC	LIC_C_ GA	260.5 79.9	90.32 BLFT20090416AVM	33 48 26.0 84 20 22.0	0.250 303	1.1 588	21.9	79.5	67.3
Cumulus Licensing LLC										
252C3 Clearwater	WHHD	LIC_ZCX SC	111.5 292.2	129.45 BLH20051104ACY	33 30 44.0 82 04 48.0	11.500 148	48.8 243	32.2	70.3	82.9
Waec License Limited Partn										
255D Atlanta	W255CJ	LIC_DC_ GA	260.5 79.9	90.32 BLFT20110915ACL	33 48 26.0 84 20 22.0	0.250 588	0.8 588	18.2	79.8	71.1
Cumulus Licensing LLC										
256C1 Macon	WDEN-FM	LIC_NC_ GA	187.4 7.3	132.05 BLH20010530AAX	32 45 51.0 83 33 32.0	100.000 177	7.2 290	58.9	114.6	72.1
Cumulus Licensing LLC										
255C Spartanburg	ALLO	USE SC	35.8 216.5	168.54 BLH7774	35 10 12.0 82 17 27.0	100.000 600	14.4 1034	94.0	146.5	73.4
Coordinates updated from LIC record										
252C3 Clearwater	WHHD	RSV-A SC	113.8 294.5	137.87	33 26 17.0 82 01 10.0	25.000 100	53.4 179	33.1	74.0	90.3
One Step Application										
255C Spartanburg	WSPA-FM	LIC_C_ SC	35.8 216.5	168.50 BLH19991026ACQ	35 10 11.0 82 17 28.0	100.000 580	14.2 1016	93.3	146.6	74.0
Entercom Greenville Licens										
250D Thomson	W250AQ	LIC_C_ GA	120.8 301.3	94.79 BLFT20040722ACU	33 30 20.0 82 30 00.0	0.027 72	0.4 208	6.2	83.7	87.5
Augusta Radio Fellowship I										

Page # 2

CH CI TY	CALL	TYPE STATE	ANT	AZI <--	DI ST FI LE #	LAT LNG	PWR(kW) HAAT(M)	INT(km) COR(M)	PRO(km) LI CENSEE	*IN* (Overl ap in km)	*OUT*
253D Greenwood	642406	APP _C_ SC		76.4 257.1	122.02 BNPFT20030317LEF	34 11 44.4 82 05 24.3	0.010 161	23.4 322	7.0 Edgewater Broadcasting, In	90.3	87.5
253D Greenwood	649507	APP _C_ SC		76.4 257.1	122.03 BNPFT20030317KUC	34 11 44.0 82 05 24.0	0.027 67	17.5 228	5.3 Tabernacle Baptist College	96.3	89.1
253C Kingsport	ALLO	USE ____ TN		13.8 194.3	295.30 BLH7394	36 31 36.0 82 35 14.0	100.000 600	197.8 1044	91.8	90.1	178.7
Coordinates updated from LIC record											
253C Kingsport	WTFM	LIC ZCY TN		21.8 202.5	298.08 BLH19950213KA	36 25 54.0 82 08 15.0	74.000 683	199.6 1305	93.8 Holston Valley Broadcastin	91.4	180.5
255D Thomson	W255AS	LIC _V_ GA		117.5 298.1	103.69 BLFT20120529AKT	33 30 37.0 82 23 12.0	0.175	0.9 143	6.5 Edgewater Broadcasting Inc	92.0	96.1
254D Sandersville	W254AR	LIC _C_ GA		152.8 333.2	123.43 BLFT20070413AFL	32 57 16.0 82 46 19.0	0.038 62	8.6 183	6.0 Radio Station Wsnt, Inc.	102.0	98.3

Terrain database is USGS 03 SEC , R= 73.215 qualifying spacings or FCC minimum Spacings in KM, M= Margin in KM
 Contour distances are on direct line to and from reference station. Reference zone= , Co to 3rd adjacent.
 All separation margins (if shown) include rounding
 Ant Column: (D= DA Standard, Z= DA 73.215, N= Not DA 73.215, _= Omni), Polarization (C,H,V,E), Beamtilt(Y,N,X)
 "*"affixed to 'IN' or 'OUT' values = site inside protected contour.
 < = Contour Overlap