

**MULTIPLE OWNERSHIP
COMPLIANCE STUDY**
All Georgia
August 2003

This Multiple Ownership Compliance Study was conducted to determine if Staton Broadcasting could acquire WHKN (FM), Millen, GA; WPMX (FM), Statesboro, GA; WQXZ (FM) and AM Construction Permit BNP-20000128ACO, both at Cordele, GA; WQSY (FM) and WCEH (AM), both at Hawkinsville, GA and be in compliance with §73.3555 of the Commission's Rules. These stations presently have common ownership, therefore, it is anticipated that Staton Broadcasting could own and operate the same stations. These stations form three distinct markets and are shown in Exhibit #1. This Multiple Ownership Compliance Study uses rules that go into effect on September 4, 2003. There are no stations further than 92 kilometers from the mutual overlap area and NCE Educational stations are considered as services.

The city grade contours of WHKN (FM) and WPMX (FM) comprise the Subject Area of Market #1 and are shown in Exhibit #2. WQSY (FM), WQXZ (FM) and AM Construction Permit BNP-20000128ACO comprise the Subject Area in Market #2 and are shown in Exhibit #6. The Subject Area of Market #3 is comprised of the city grade contours of WCEH (AM) and WQSY (FM) and is shown in Exhibit #10.

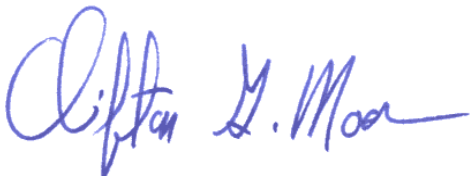
The city grade contours of the stations providing service to the Subject Area in Market #1 are shown in Exhibits #3 and 4. Exhibit #5 is a tabulation of all services to Market #1. The city grade contours of the stations providing service to Market #2 are shown in Exhibits #7 and 8. Exhibit #9 is a tabulation of all services to the Subject

Area in Market #2. The city grade contours of the stations providing service to the Subject Area in Market #3 are shown in Exhibits #11-12. Exhibit #13 is a tabulation of all services to the Subject Area in Market #3.

In Market #1, The AM and FM contour maps combined show 22 services, including the 2 Subject Stations (2 FM and no AM). In Market #2, the AM and FM contour maps combined show 19 services, including the 3 Subject Stations (2 FM and 1 AM). WCEH (AM) was not counted as a service to this market since it is co-owned and is not one of the Subject Stations. In Market #3, the contour maps combined show there are 17 services, including the 2 Subject Stations (1 FM and 1 AM). WQXZ (FM) was not counted as a service to this market since it is co-owned and is not one of the Subject Stations. The Commission's multiple ownership rule in §73.3555 (a) states that:

"In a radio market with between 15 and 29 (inclusive) commercial and non-commercial educational full-power radio stations, a party may have a cognizable interest in up to 6 commercial radio stations, not more than 4 of which are in the same service (AM or FM);"

Based on these findings, it is believed that the ownership of the three Subject Stations is in compliance with §73.3555 of the Commission's Rules. All statements contained herein are thought to be accurate and correct to the knowledge of the undersigned.



August 21, 2003

Clifton G. Moor
Bromo Communications, Inc.

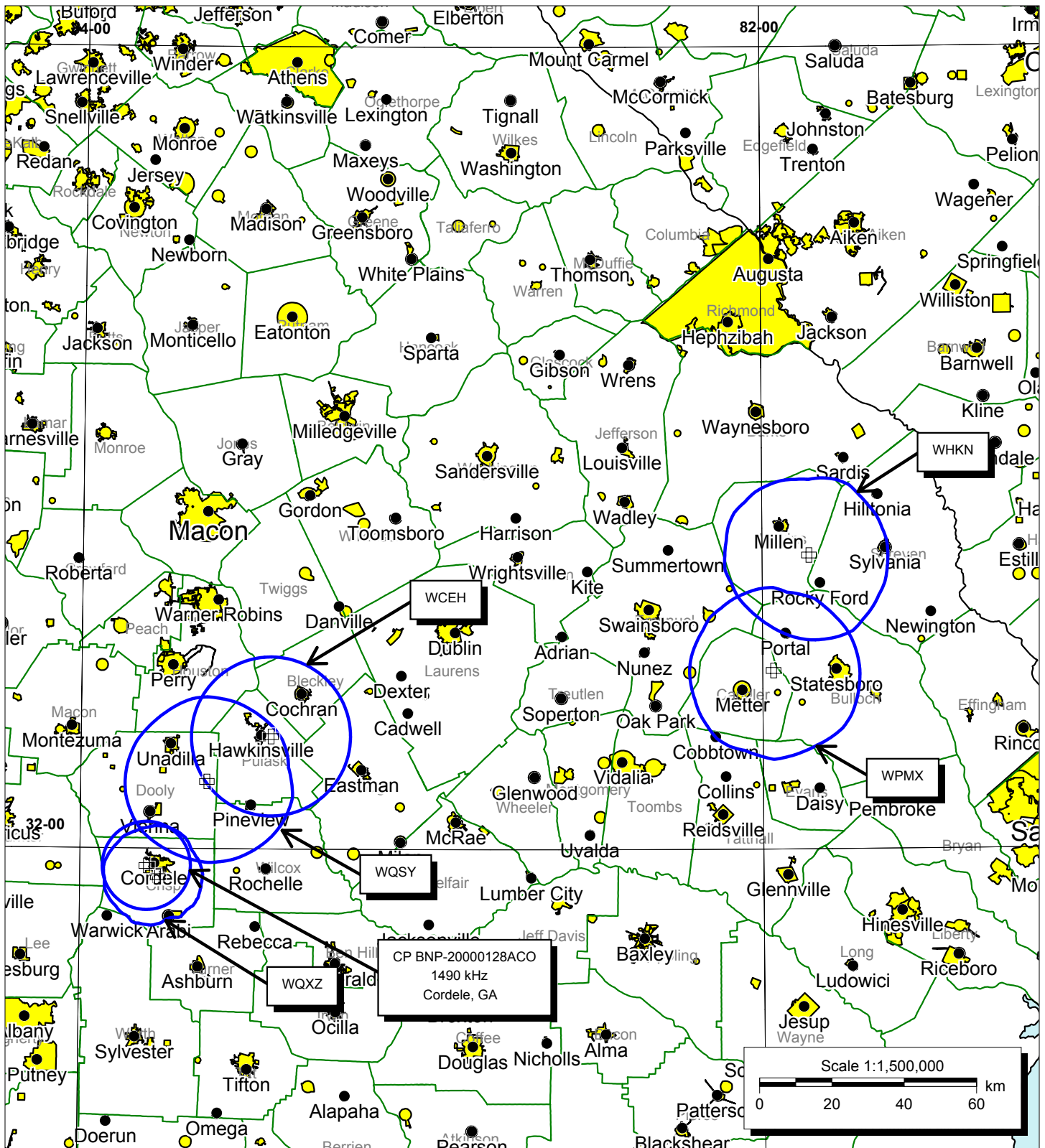


EXHIBIT #1
Co-Owned Stations
MULTIPLE OWNERSHIP
COMPLIANCE STUDY
All Georgia

Bromo Communications, Inc.
 Atlanta, Georgia
 August 2003

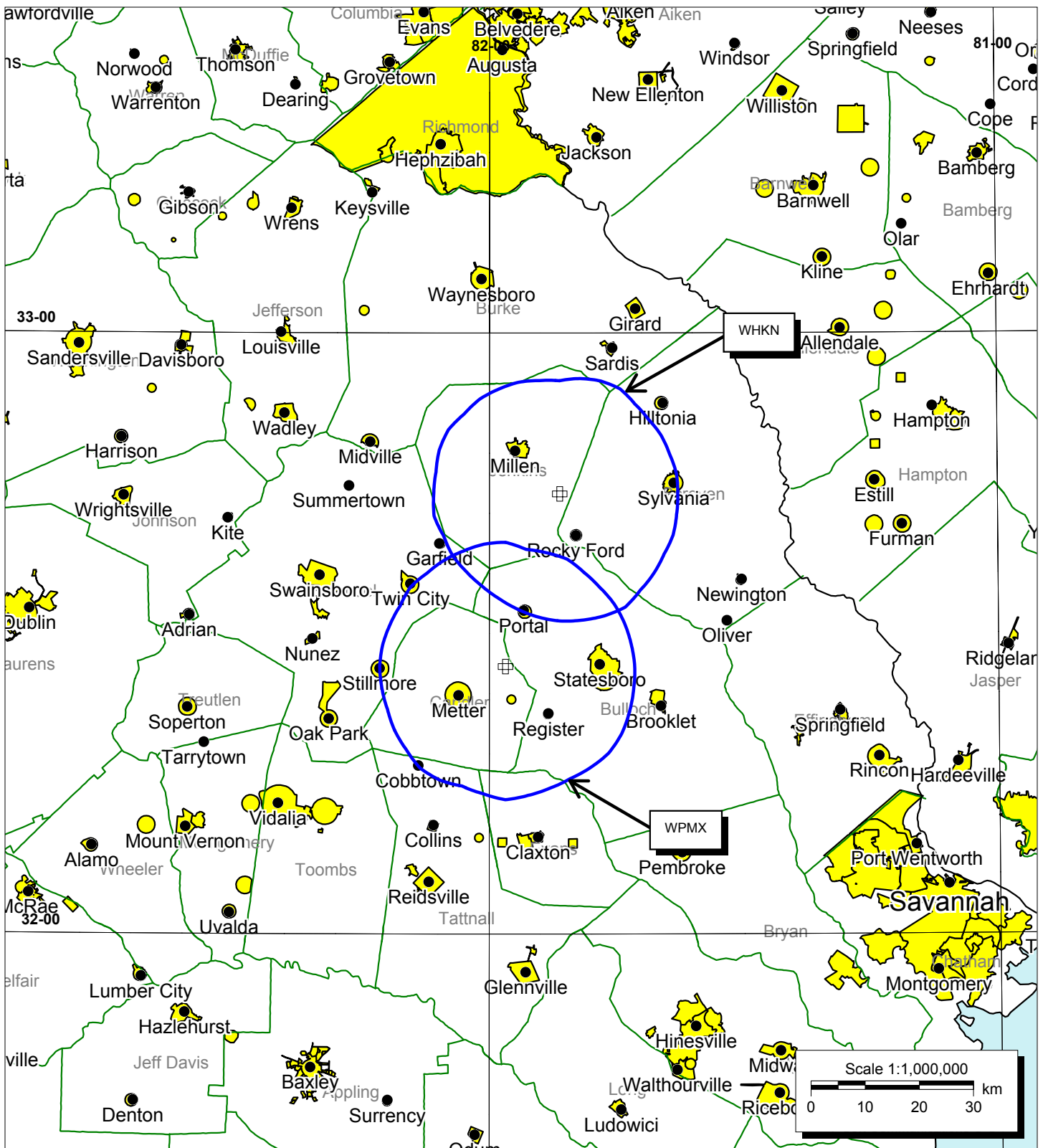


EXHIBIT #2

Subject Stations - Market #1 MULTIPLE OWNERSHIP COMPLIANCE STUDY All Georgia

Bromo Communications, Inc.
Atlanta, Georgia
August 2003

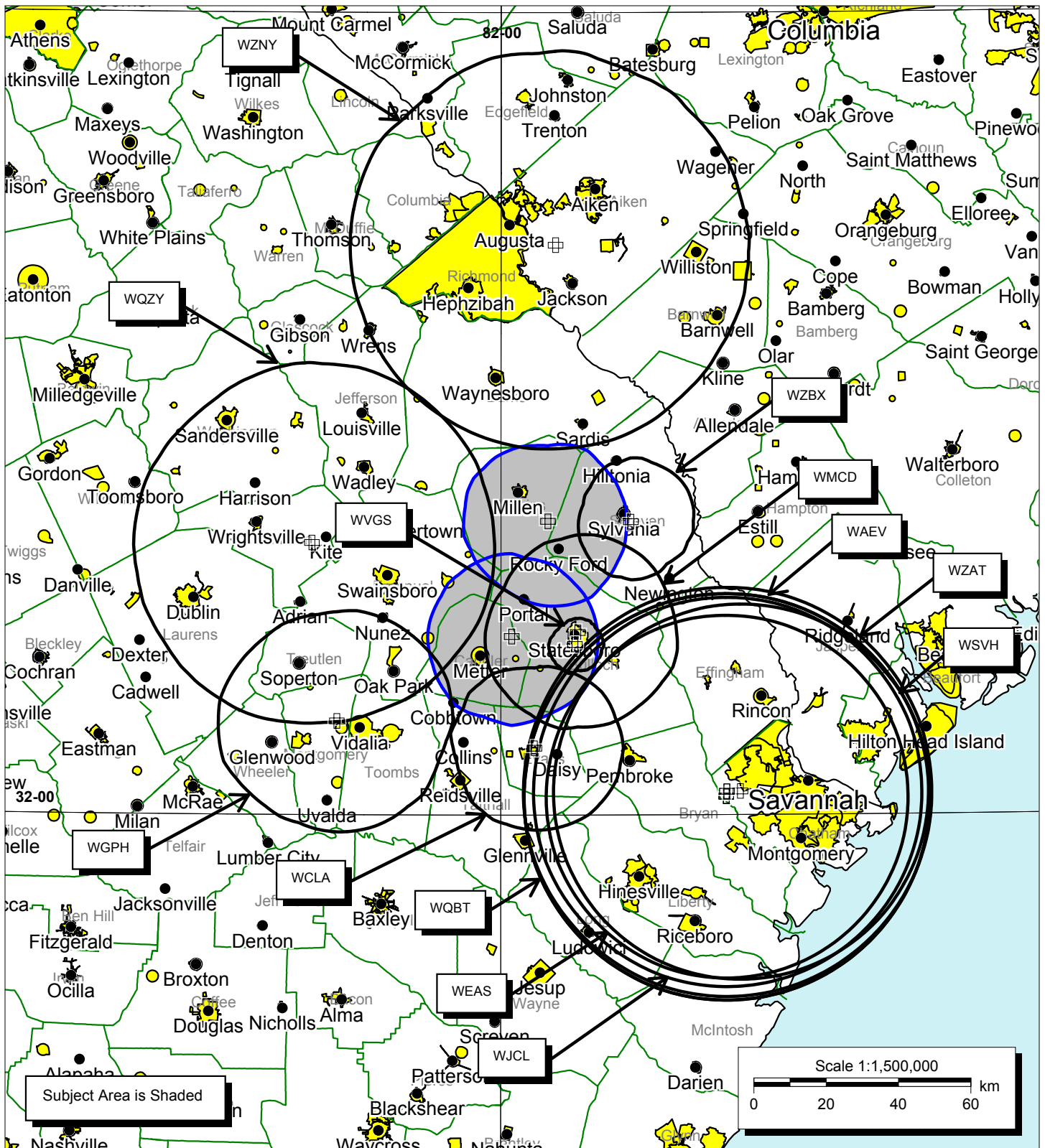


EXHIBIT #3
FM Services to Subject Area - Market #1
MULTIPLE OWNERSHIP
COMPLIANCE STUDY
All Georgia

Bromo Communications, Inc.
 Atlanta, Georgia
 August 2003

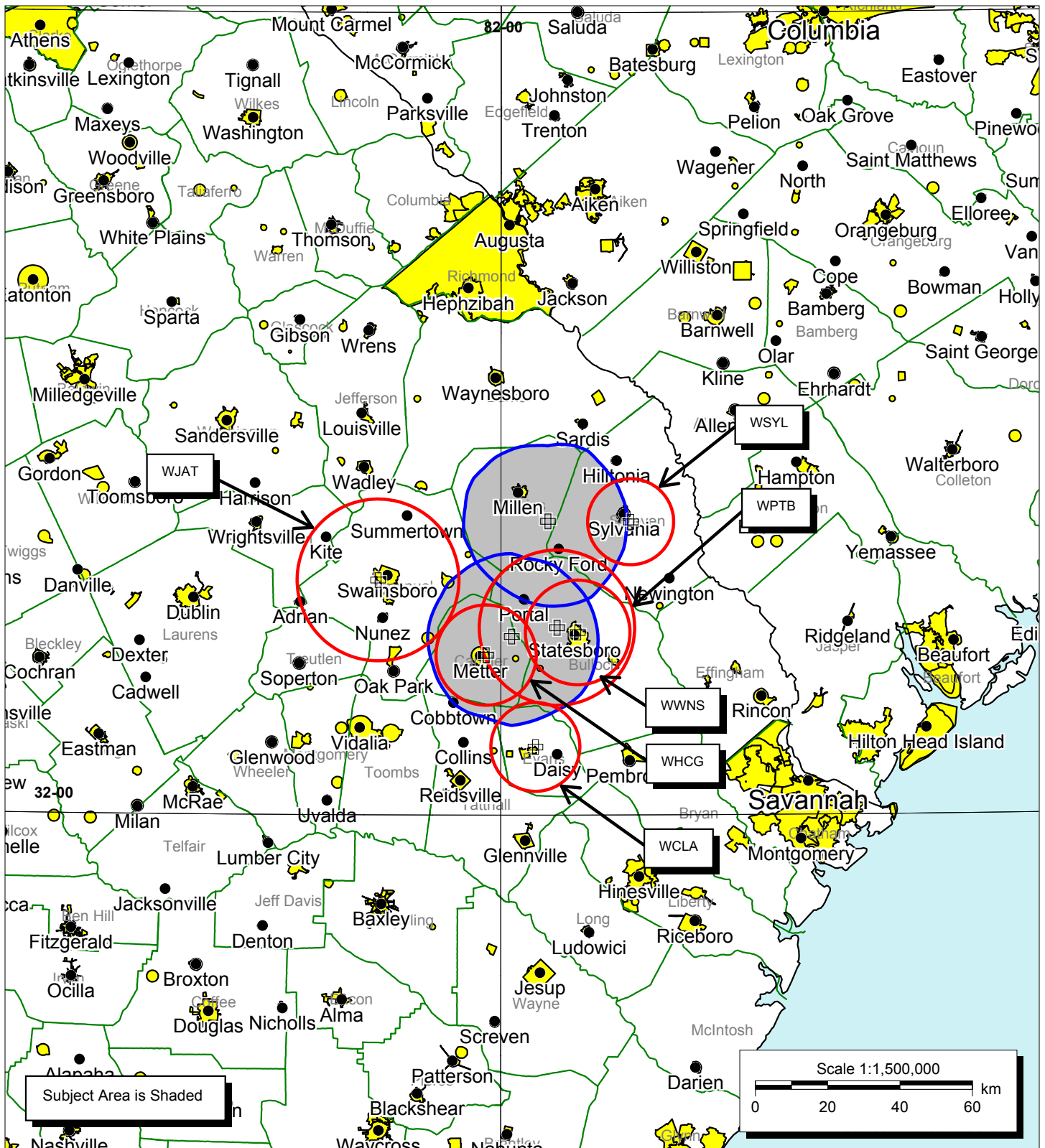


EXHIBIT #4
AM Services to Subject Area - Market #1
MULTIPLE OWNERSHIP
COMPLIANCE STUDY
All Georgia

Bromo Communications, Inc.
 Atlanta, Georgia
 August 2003

EXHIBIT #5
MULTIPLE OWNERSHIP
COMPLIANCE STUDY
All Georgia
August 2003

Tabulation of Services to Subject Area

Market #1

Subject Stations

<u>Call</u>	<u>Ch/Freq</u>	<u>Latitude</u>	<u>Longitude</u>	<u>Power (kW)</u>	<u>City</u>	<u>State</u>
WHKN	235C3	32° 43' 57"	81° 51' 43"	14.5	Millen	GA
WPMX	275C3	32° 26' 43"	81° 58' 07"	25	Statesboro	GA

FM Services to Subject Area

<u>Call</u>	<u>Ch/Freq</u>	<u>Latitude</u>	<u>Longitude</u>	<u>Power (kW)</u>	<u>City</u>	<u>State</u>
WAEV	247C0	32° 02' 45"	81° 20' 27"	100	Savannah	GA
WBMZ	285A	32° 23' 56"	82° 02' 36"	3	Metter	GA
WCLA	297C3	32° 10' 01"	81° 54' 07"	25	Claxton	GA
WEAS	226C1	32° 02' 48"	81° 20' 27"	100	Savannah	GA
WGPH	218C2	32° 14' 02"	82° 28' 52"	40	Vidalia	GA
WJCL	243C	32° 03' 30"	81° 20' 20"	100	Savannah	GA
WMCD	261C2	32° 27' 19"	81° 46' 28"	50	Statesboro	GA
WQBT	231C0	32° 02' 45"	81° 20' 27"	100	Savannah	GA
WQZY	240C1	32° 40' 42"	82° 33' 26"	88	Dublin	GA
WSVH	216C	32° 03' 32"	81° 17' 57"	100	Savannah	GA
WVGS	220A	32° 25' 32"	81° 46' 58"	1	Statesboro	GA
WZAT	271C	32° 03' 30"	81° 20' 20"	100	Savannah	GA
WZBX	293A	32° 43' 53"	81° 37' 03"	6	Sylvania	GA
WZNY	289C	33° 25' 15"	81° 50' 19"	100	Augusta	GA

AM Services to Subject Area

<u>Call</u>	<u>Ch/Freq</u>	<u>Latitude</u>	<u>Longitude</u>	<u>Power (kW)</u>	<u>City</u>	<u>State</u>
WCLA	1470	32° 10' 12"	81° 53' 56"	1	Claxton	GA
WHCG	1360	32° 23' 56"	82° 02' 36"	1	Metter	GA
WJAT	800	32° 35' 08"	82° 21' 42"	1	Swainsboro	GA
WPTB	850	32° 28' 02"	81° 50' 07"	1	Statesboro	GA
WSYL	1490	32° 43' 51"	81° 37' 04"	1	Sylvania	GA
WWNS	1240	32° 27' 19"	81° 46' 28"	0.71	Statesboro	GA

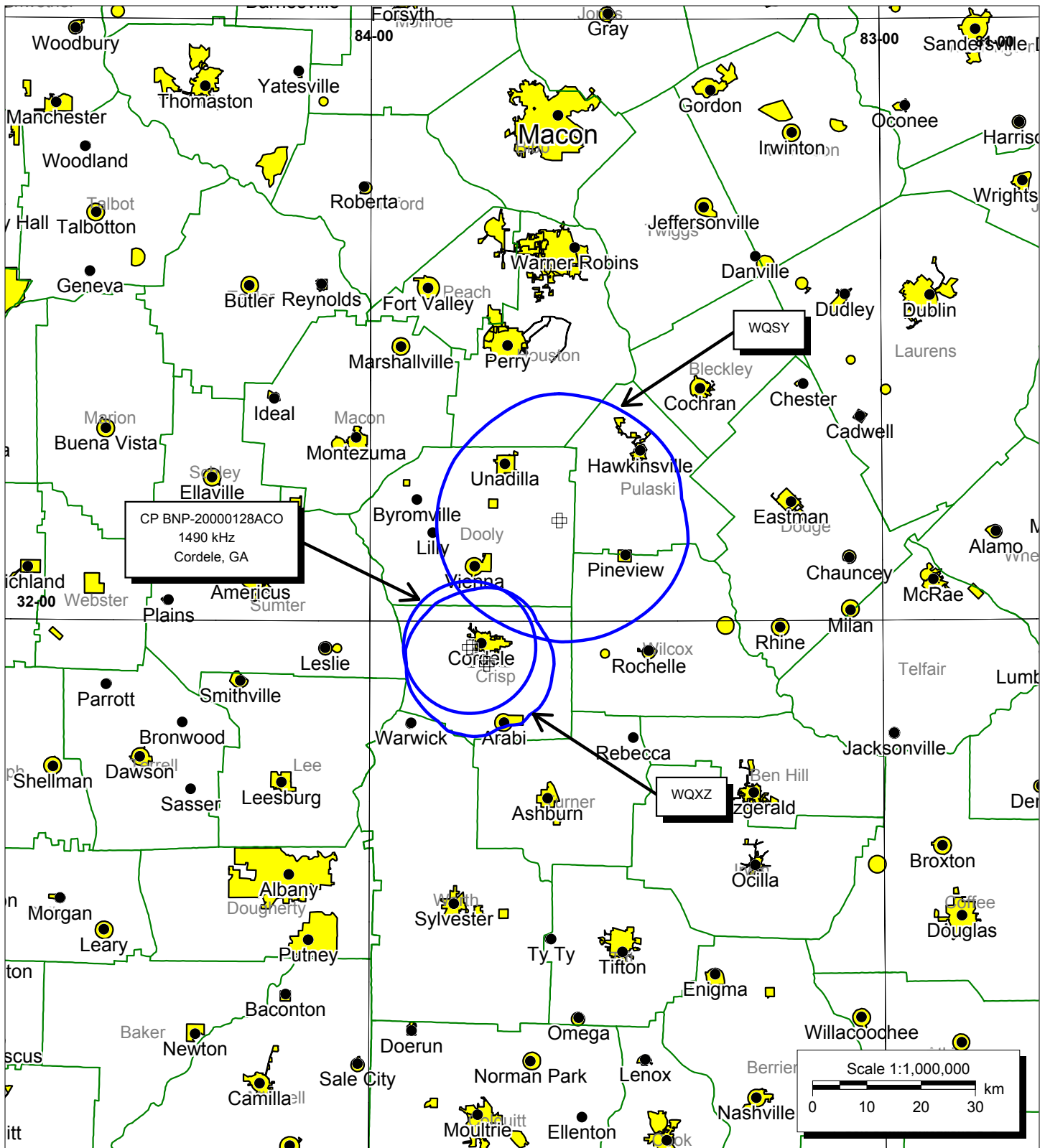


EXHIBIT #6

Subject Stations - Market #2 MULTIPLE OWNERSHIP COMPLIANCE STUDY All Georgia

Bromo Communications, Inc.
Atlanta, Georgia
August 2003

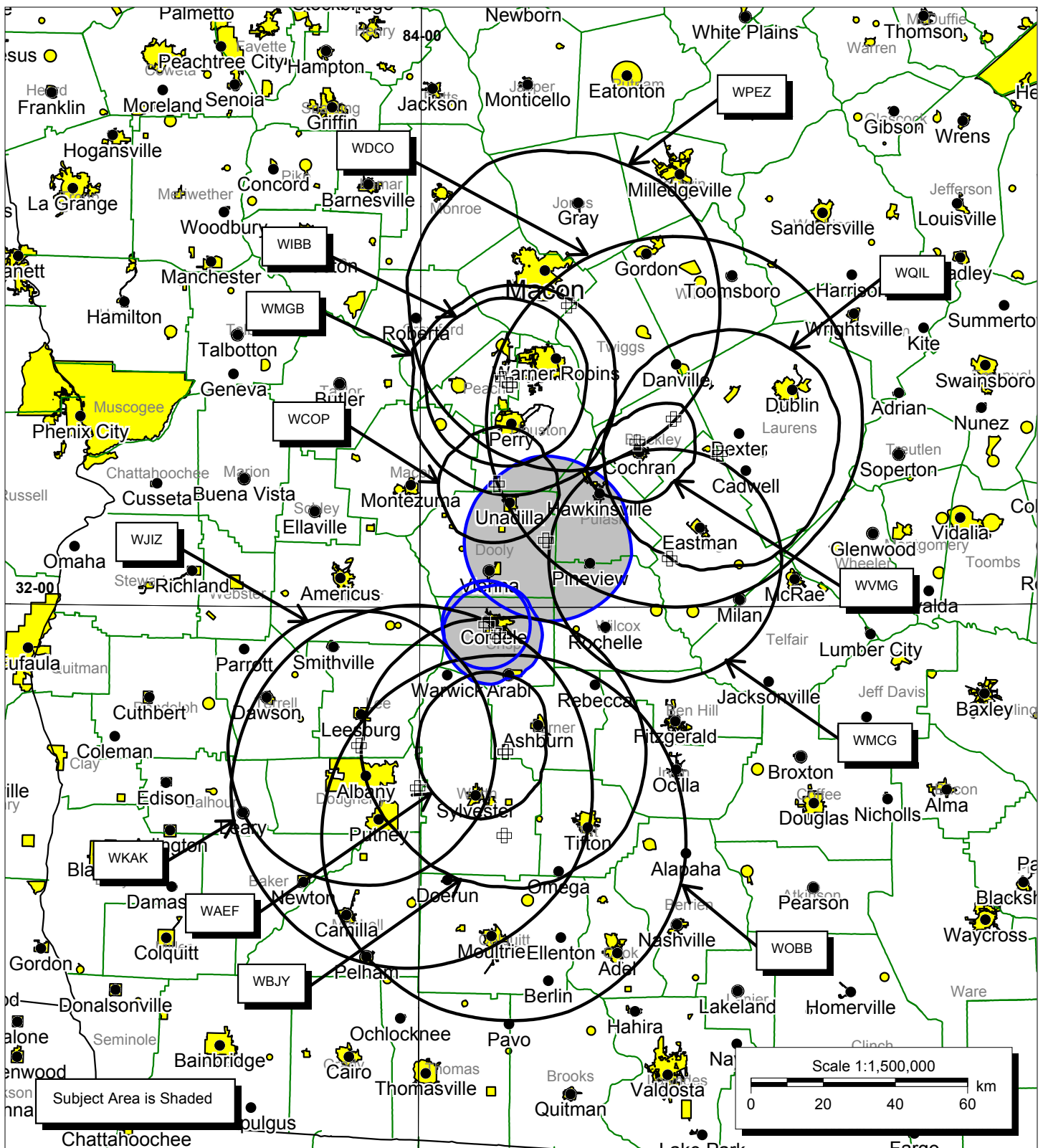


EXHIBIT #7
FM Services to Subject Area - Market #2
MULTIPLE OWNERSHIP
COMPLIANCE STUDY
All Georgia

Bromo Communications, Inc.
 Atlanta, Georgia
 August 2003

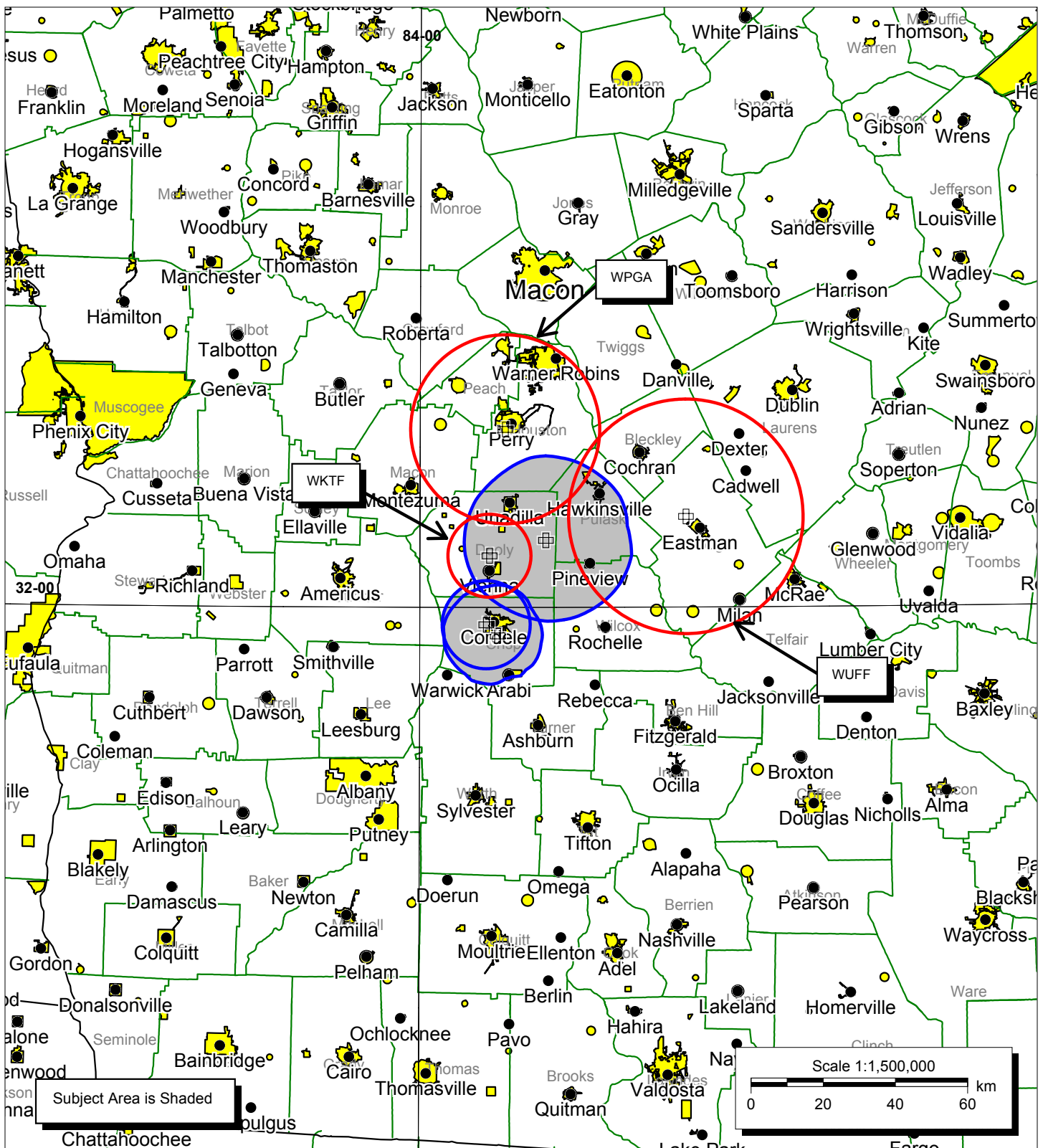


EXHIBIT #8
AM Services to Subject Area - Market #2
MULTIPLE OWNERSHIP
COMPLIANCE STUDY
All Georgia

Bromo Communications, Inc.
 Atlanta, Georgia
 August 2003

EXHIBIT #9
MULTIPLE OWNERSHIP
COMPLIANCE STUDY
All Georgia
August 2003

Tabulation of Services to Subject Area

Market #2

Subject Stations

<u>Call</u>	<u>Ch/Freq</u>	<u>Latitude</u>	<u>Longitude</u>	<u>Power (kW)</u>	<u>City</u>	<u>State</u>
WQSY	280C3	32° 10' 03"	83° 37' 51"	10.5	Hawkinsville	GA
WQXZ	252A	31° 55' 45"	83° 46' 20"	4.2	Cordele	GA
New CP	1490	31° 57' 24"	83° 48' 20"	1	Cordele	GA

FM Services to Subject Area

<u>Call</u>	<u>Ch/Freq</u>	<u>Latitude</u>	<u>Longitude</u>	<u>Power (kW)</u>	<u>City</u>	<u>State</u>
WAEF	212C2	31° 38' 22"	83° 44' 58"	11	Cordele	GA
WBJY	207C1	31° 38' 22"	83° 44' 58"	65	Americus	GA
WCOP	260A	32° 18' 29"	83° 46' 30"	6	Unadilla	GA
WDCC	209C	32° 28' 11"	83° 15' 17"	100	Cochran	GA
WIBB	250C3	32° 34' 12"	83° 45' 26"	10.5	Fort Valley	GA
WJIZ	242C1	31° 39' 16"	84° 10' 36"	100	Albany	GA
WKAK	283C1	31° 32' 57"	84° 00' 19"	100	Albany	GA
WMCG	285C2	32° 07' 16"	83° 16' 05"	36	Milan	GA
WMGB	236C2	32° 33' 20"	83° 44' 14"	46	Montezuma	GA
WOBB	262C	31° 25' 51"	83° 45' 10"	100	Tifton	GA
WPEZ	229C1	32° 45' 12"	83° 33' 46"	100	Jeffersonville	GA
WQIL	267C2	32° 22' 59"	83° 07' 08"	50	Chauncey	GA
WVMG	244A	32° 24' 43"	83° 21' 42"	6	Cochran	GA

AM Services to Subject Area

<u>Call</u>	<u>Ch/Freq</u>	<u>Latitude</u>	<u>Longitude</u>	<u>Power (kW)</u>	<u>City</u>	<u>State</u>
WKTF	1550	32° 07' 44"	83° 47' 46"	1	Vienna	GA
WPGA	980	32° 26' 40"	83° 45' 00"	5	Perry	GA
WUFF	710	32° 13' 35"	83° 13' 10"	2.5	Eastman	GA

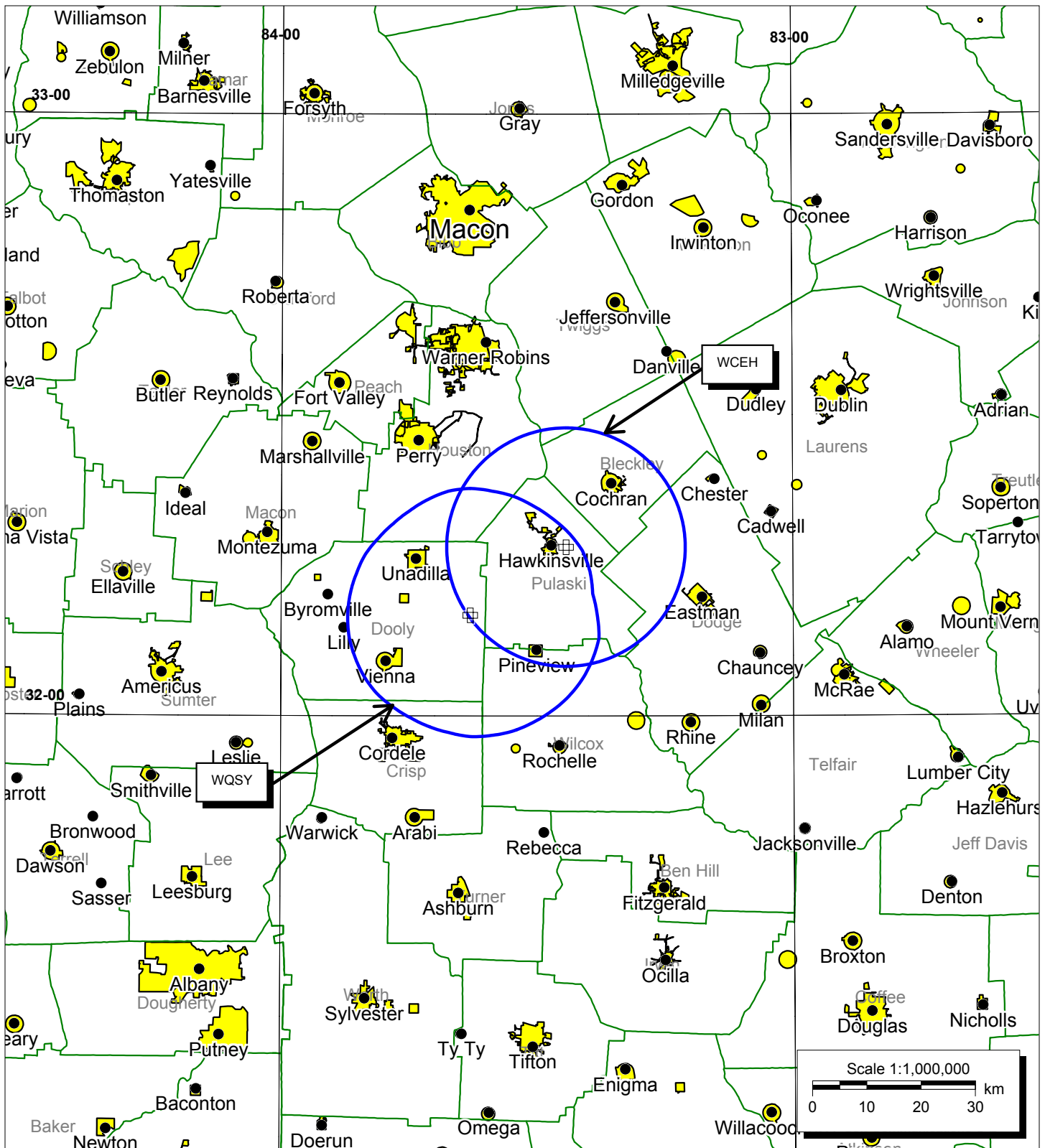


EXHIBIT #10
Subject Stations - Market #3
MULTIPLE OWNERSHIP
COMPLIANCE STUDY
All Georgia

Bromo Communications, Inc.
 Atlanta, Georgia
 August 2003

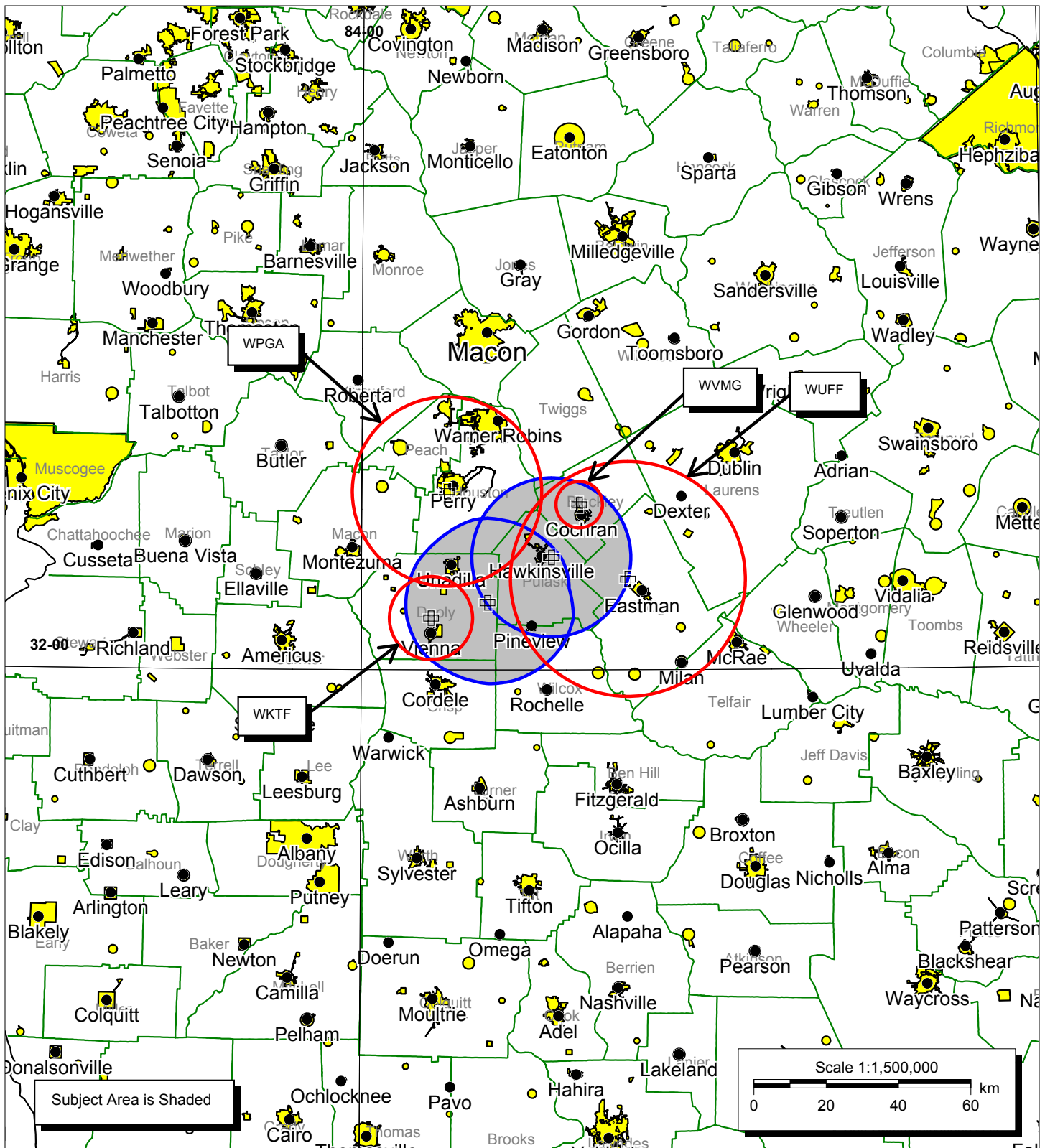


EXHIBIT #12
AM Services to Subject Area - Market #3
MULTIPLE OWNERSHIP
COMPLIANCE STUDY
All Georgia

Bromo Communications, Inc.
 Atlanta, Georgia
 August 2003

EXHIBIT #13
MULTIPLE OWNERSHIP
COMPLIANCE STUDY
All Georgia
August 2003

Tabulation of Services to Subject Area

Market #3

Subject Stations

<u>Call</u>	<u>Ch/Freq</u>	<u>Latitude</u>	<u>Longitude</u>	<u>Power (kW)</u>	<u>City</u>	<u>State</u>
WCEH	610	32° 16' 50"	83° 26' 37"	0.5	Hawkinsville	GA
WQSY	280C3	32° 10' 03"	83° 37' 51"	10.5	Hawkinsville	GA

FM Services to Subject Area

<u>Call</u>	<u>Ch/Freq</u>	<u>Latitude</u>	<u>Longitude</u>	<u>Power (kW)</u>	<u>City</u>	<u>State</u>
WCOP	260A	32° 18' 29"	83° 46' 30"	6	Unadilla	GA
WDCO	209C	32° 28' 11"	83° 15' 17"	100	Cochran	GA
WDEN	256C1	32° 45' 51"	83° 33' 32"	100	Macon	GA
WIBB	250C3	32° 34' 12"	83° 45' 26"	10.5	Fort Valley	GA
WMCG	285C2	32° 07' 16"	83° 16' 05"	36	Milan	GA
WMGB	236C2	32° 33' 20"	83° 44' 14"	46	Montezuma	GA
WPEZ	229C1	32° 45' 12"	83° 33' 46"	100	Jeffersonville	GA
WPWB	213C2	32° 40' 55"	83° 22' 10"	16.5	Byron	GA
WQIL	267C	32° 22' 59"	83° 07' 08"	50	Chauncey	GA
WUFF	248A	32° 13' 35"	83° 13' 10"	2	Eastman	GA
WVMG	244A	32° 24' 43"	83° 21' 42"	6	Cochran	GA

AM Services to Subject Area

<u>Call</u>	<u>Ch/Freq</u>	<u>Latitude</u>	<u>Longitude</u>	<u>Power (kW)</u>	<u>City</u>	<u>State</u>
WKTF	1550	32° 07' 44"	83° 47' 46"	1	Vienna	GA
WPGA	980	32° 26' 40"	83° 45' 00"	5	Perry	GA
WUFF	710	32° 13' 35"	83° 13' 10"	2.5	Eastman	GA
WVMG	1440	32° 24' 43"	83° 21' 42"	1	Cochran	GA