

EXHIBIT 13

Waiver Request of Section 74.1204

K211EI Lamar CO 205 Watts ERP Channel 211

June 2012

Calvary Chapel of Twin Falls, Inc.

The proposed site is contained entirely inside the service contour of third-adjacent FM Stations KTLH.C Lamar, CO and KCSE.Lic and CP Lamar, CO

KTLH.C

The proposed site is contained entirely inside the service contour of third-adjacent KTLH.C, 2084A, 1.5kW, Lamar, CO. The level of least arriving protected F(50,50) signal at the proposed transmitter site of KTLH.C is 122.2. Using the U/D method for calculating proposed interference, the interfering contour is 162.2-dBu (free-space contour method employed). KTLH.C will not be located on the same tower as the proposed. There are several towers within close proximity of the proposed tower at this communications site. The interfering signal would, in the worst case at the maximum radial, extend 1 meter from the center of radiation, which is proposed at 64 meters AGL. This interference contour does not touch the ground and given the area of sparse population that this tower is located near, approximately 2.5 miles south of Lamar on HWY 287, there is no population that will be affected by this interference contour. Therefore, Calvary Chapel of Twin Falls, Inc. respectfully requests a waiver of the FM translator contour overlap regulations with respect to third-adjacent KTLH.C.

KCSE.LIC & CP

The proposed site is contained entirely inside the service contour of third-adjacent KCSE.LIC & CP, 214A, .25kW and 4kW, Lamar, CO. The level of least arriving protected F(50,50) signal at the proposed transmitter site of KCSE.LIC is 114.4 and CP is 126.5-dBu. Using the U/D method for calculating proposed interference, the highest degree for the interfering contour is the KCSE.LIC at 154.4-dBu (free-space contour method employed). KCSE is not located on the same tower as the proposed. There are several towers within close proximity of the proposed tower at this communications site. The interfering signal would, in the worst case at the maximum radial, extend 2 meters from the center of radiation, which is proposed at 64 meters AGL. This interference contour does not touch the ground and given the area of sparse population that this tower is located near, approximately 2.5 miles south of Lamar on HWY 287, there is no population that will be affected by this interference contour. Therefore, Calvary Chapel of Twin Falls, Inc. respectfully requests a waiver of the FM translator contour overlap regulations with respect to third-adjacent KCSE LIC and CP.

Calvary Chapel of Twin Falls, Inc.

Lamar, CO K211EI Minor Modification
Calvary Chapel Of Twin Falls, Inc.
Average Protected F(50-50)= 10.45 km
Omni-directional

REFERENCE
38 02 14.0 N.
102 35 51.0 W.

CH# 211D - 90.1 MHz, Pwr= 0.205 kW, HAAT= 71.0 M, COR= 1217 M

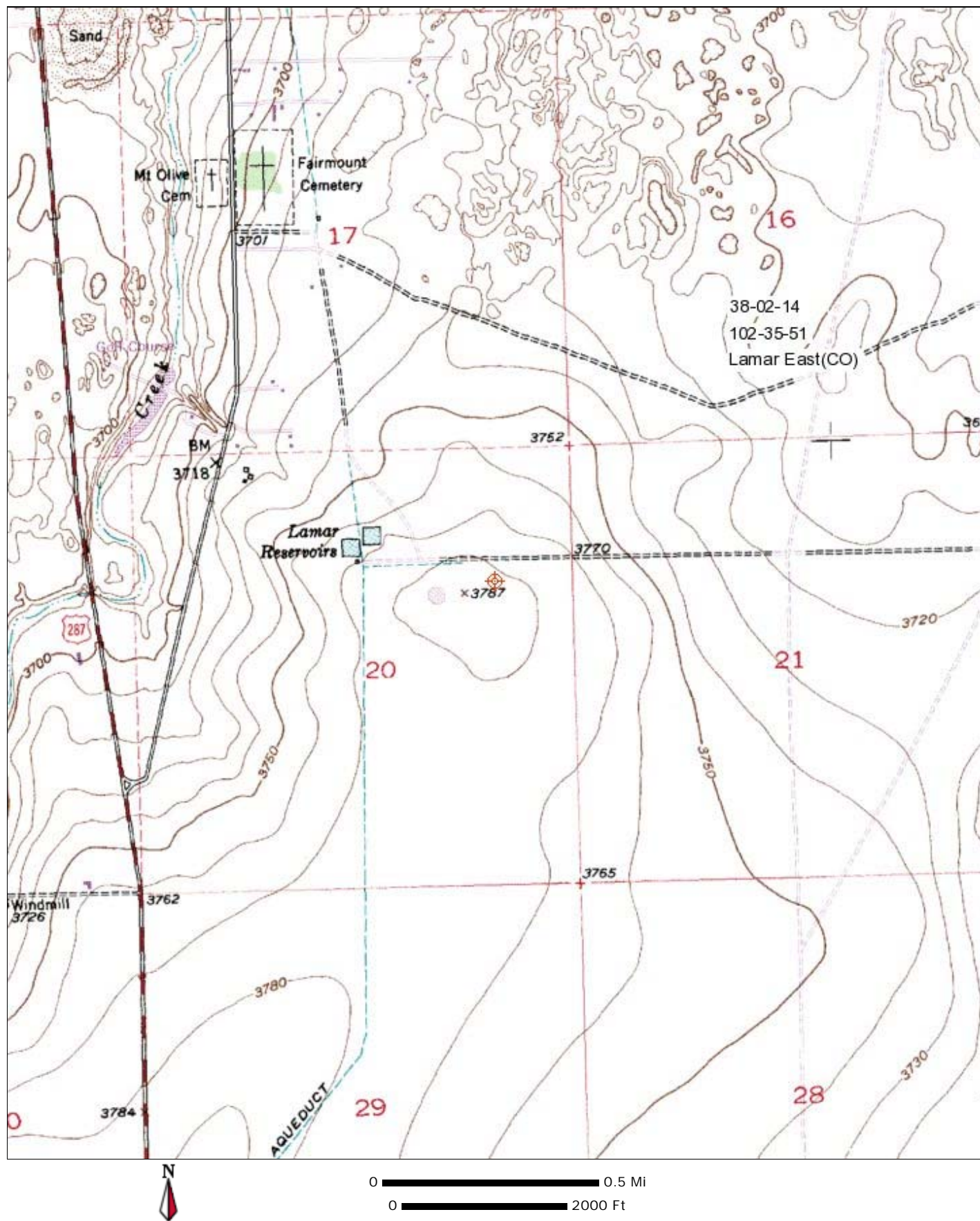
DISPLAY DATES
DATA 05-31-12
SEARCH 06-06-12

CH CITY	CALL	TYPE STATE	ANT STATE	AZI <--	DI ST FILE #	LAT LNG	PWR(kW) HAAT(M)	INT(km) COR(M)	PRO(km) LICENSEE	*IN* (Overlap in km)	*OUT* (in km)
211D Lamar	K211EI	LIC_V_	CO	0.0 0.0	0.00 BLFT20040309ABW	38 02 14.0 102 35 51.0	0.075 135	40.6 1281	12.2 Calvary Chapel	-52.8*	-53.9*
214A Lamar	KCSE	CP_NCX	CO	233.9 53.9	0.21 BPED20110908AAA	38 02 10.0 102 35 58.0	4.000 113	2.9 1259	32.1 Kanza Society, Inc.	-10.9*	-32.9*
212D Lamar	K211EI	CP_V_	CO	0.0 0.0	0.00 BPFT20100914AGS	38 02 14.0 102 35 51.0	0.075 135	18.1 1281	12.2 Calvary Chapel	-30.2*	-30.1*
208A Lamar	KTLH	CP_CX	CO	233.9 53.9	0.21 BMPED20111201QTJ	38 02 10.0 102 35 58.0	1.500 130	2.2 1275	26.7 Academy Media, Inc.	-10.2*	-27.5*
214A Lamar	KCSE	LIC_CX	CO	233.9 53.9	0.21 BLED20110323AAC	38 02 10.0 102 35 58.0	0.250 113	1.1 1259	16.6 Kanza Society, Inc.	-9.1*	-17.4*
211C1 Brewster	KZKN	LIC_CX	KS	38.3 219.1	171.70 BLED20101027AAH	39 14 31.0 101 21 38.0	90.000 305	168.8 1343	70.9 Kanza Society, Inc.	-10.1	56.2
210A Springfield	NONE	CP_VX	CO	181.5 1.5	70.71 BNPED20071018AZH	37 24 01.0 102 37 08.0	6.000 46	29.6 1384	20.1 Academy Media, Inc.	32.2	38.1
06Z2 Des Moines	616943	AP_HN	NM	218.8 38.0	180.78 BPRM20011009AEH	36 45 48.0 103 52 12.0	0.000	1.0 0	7.0 Sierra Grande Broadcasting	0.0R	181.3M
209D Springfield	K209BK	LIC_C_	CO	197.3 17.1	77.76 BLFT19950406TH	37 22 05.0 102 51 32.0	0.250 72	1.1 1524	12.9 Educational Communications	69.7	63.8
211D Leoti	K211CH	LIC_VN	KS	64.9 245.7	119.37 BLFT19950509TE	38 29 08.0 101 21 28.0	0.250 42	23.8 1047	7.1 Great Plains Christian Rad	82.7	68.0
06 2C Ensign	KBSD-DT	LI_HN	KS	101.9 283.2	203.16 BLCDT20090717AAS	37 38 28.0 100 20 39.0	31.000 217	1.0 1046	7.0 Sunflower Broadcasting, In	0.0R	203.7M
06NT Manitou Springs	K06BI	LI_DHN	CO	295.3 113.9	221.28 BLTTV1446	38 51 50.0 104 54 15.0	0.001 188	1.0 2012	7.0 City Of Manitou Springs	0.0R	221.8M
06NT Southwest Baca Coun	K06HW	LI_DHN	CO	204.7 24.4	106.13 BLTTV4109	37 10 05.0 103 05 55.0	0.136 199	4.3 1661	1.3 Baca County	5.6R	101.0M
06NT Roy	K06EM	LI_DHN	NM	212.6 31.6	272.02 BLTTV3088	35 57 50.0 104 13 40.0	0.013 215	4.3 1851	1.3 Kob-tv, LIc	5.6R	266.9M
06NT Wagon Mound	K06BN	LI_DHN	NM	219.7 38.4	291.58 BLTTV5007	36 00 00.0 104 40 00.0	0.028 308	4.3 2115	1.3 Lin Of New Mexico, LIc	5.6R	286.4M
06 2 Hayes Center	KWNB-DR	APR_HN	NE	24.6 205.6	317.58 BPRM20080801BDB	40 37 32.0 101 01 45.0	3.000 221	1.0 1160	7.0 Pappas Tel ecasting Of Cent	0.0R	318.1M
06 2C Hayes Center	KWNB-TV	AP_HN	NE	24.6 205.6	317.58 BDSTA20110930BHG	40 37 32.0 101 01 45.0	6.300 221	1.0 1160	7.0 Pappas Tel ecasting Of Cent	0.0R	318.1M
06 2C Hayes Center	KWNB-TV	LI_HN	NE	24.6 205.6	317.58 BLCDT20090604ABL	40 37 32.0 101 01 45.0	11.900 221	1.0 1160	7.0 Pappas Tel ecasting Of Cent	0.0R	318.1M
06 T Amarillo	KXIT-LP	CP_N	TX	167.6 348.0	319.50 BDFCDVL20090812AAE	35 13 25.0 101 50 21.0	0.300 115	1.0 1149	7.0 George Chambers	0.0R	320.0M
06 T Sargents	K06NG	CP_N	CO	277.9 95.6	336.33 BDFCDTV20100212ABL	38 23 29.6 106 24 41.6	0.050 240	4.3 2794	1.3 Gunnison County Metropolit	5.6R	331.2M
06 T Mora	K06HX	CP_D_N	NM	227.5 45.8	336.73 BDFCDTV20090824ADC	35 57 31.0 105 21 12.0	0.001 422	4.3 2590	1.3 Lin Of New Mexico, LIc	5.6R	331.6M
06Z2 Hutchinson	616942	AP_HN	KS	90.5 273.2	376.87 BPRM20011009AEG	37 55 43.0 98 18 36.0	0.000	4.3 0	1.3 Sierra Grande Broadcasting	5.6R	371.7M
06 D Chamita	1334396	AP_D_N	NM	236.5 54.4	380.23 BNPDVL20090923ABL	36 05 52.1 106 07 19.6	0.300 315	1.0 2040	7.0 Availabl e Medi a Associates	0.0R	380.7M
06 D Gunnison	K06HN-D	LI_N	CO	279.6 96.9	380.72 BLDVL20091021ABQ	38 31 41.5 106 54 14.6	0.060 278	4.3 2636	1.3 Gunnison County Metropolit	5.6R	375.6M
06 D Aspen	K06HU-D	LI_D_N	CO	291.1 108.4	391.72 BLDTV20100503ACZ	39 13 33.0 106 50 00.0	0.006 619	4.3 2882	1.3 Pitkin County Translator D	5.6R	386.6M

Page # 2

CH CITY	CALL	TYPE STATE	ANT STATE	AZI <--	DIST FILE #	LAT LNG	PWR(kW) HAAT(M)	INT(km) COR(M)	PRO(km) LICENSEE	*IN* (Overlap in km)	*OUT*
06 T Gateview	KO6AM	AP	___N CO	275.5 92.6	408.86 BDFCDTV20100210ABG	38 17 52.0 107 15 05.0	0.060 283	4.3 2784	1.3 Gunnison County	5.6R	403.7M Metropolit

Terrain database is USGS 03 SEC , R= 73.215 qualifying spacings or FCC minimum Spacings in KM, M= Margin in KM
 Contour distances are on direct line to and from reference station. Reference zone= , Co to 3rd adjacent.
 All separation margins (if shown) include rounding
 Ant Column: (D= DA Standard, Z= DA 73.215, N= Not DA 73.215, _= Omni), Polarization (C,H,V,E), Beamtilt(Y,N,X)
 "*"affixed to 'IN' or 'OUT' values = site inside protected contour.



Contour.out

Calvary Chapel of Twin Falls, Inc.

N. Lat. = 380214.0 W. Lng. = 1023551.0

HAAT and Distance to Contour,

FCC, FM 2-10 Mi, 51 pts Method - USGS 03 SEC

Azi .	AV EL	HAAT	ERP kW	dBk	Fi el d	60-F5
000	1119.3	97.7	0.2050	-6.88	1.000	12.13
030	1108.3	108.7	0.2050	-6.88	1.000	12.76
060	1100.7	116.3	0.2050	-6.88	1.000	13.18
090	1135.5	81.5	0.2050	-6.88	1.000	11.13
120	1168.9	48.1	0.2050	-6.88	1.000	8.60
150	1184.6	32.4	0.2050	-6.88	1.000	6.97
180	1166.0	51.0	0.2050	-6.88	1.000	8.89
210	1189.3	27.7	0.2050	-6.88	1.000	6.75
240	1172.9	44.1	0.2050	-6.88	1.000	8.17
270	1160.0	57.0	0.2050	-6.88	1.000	9.45
300	1126.7	90.3	0.2050	-6.88	1.000	11.68
330	1123.6	93.4	0.2050	-6.88	1.000	11.86

Ave EI = 1146.33 M HAAT= 70.67 M AMSL= 1217