

Compliance with C.F.R. 74.1204

The proposed FM Translator to operate on channel 252 is located within the protected 54dBu contour of second adjacent channel stations WSKQ, channel 250B, New York, NY, and WEPN, channel 254B, New York, NY. According to 74.1204(a)(3), in order to protect second and third adjacent facilities, the difference in dBu between the two facilities must not exceed 40dBu.

The proposed ERP for new 252D:	90 watts
The proposed COR for new 252D:	60 meters
WSKQ and WEPN F(50/50) contour at proposed site:	74.8dBu
The F(50/10) contour of proposed new 252D:	114.8dBu

The predicted distance to the 114.8dbu interfering contour is 121 meters. Taking into account the vertical elevation pattern of the Scala CLFM vertically polarized antenna and the height above ground of 60m, it has been determined that the interfering contour of 114.8dbu does not reach the ground. As seen in Exhibit 13-A1, the lowest elevation for this interfering contour is 20.9m above ground at a distance of 68m from the antenna.

As can be seen in Exhibit 13–A2 there are no surrounding structures which are tall enough to enter the interfering contour within the 121m distance from the antenna.

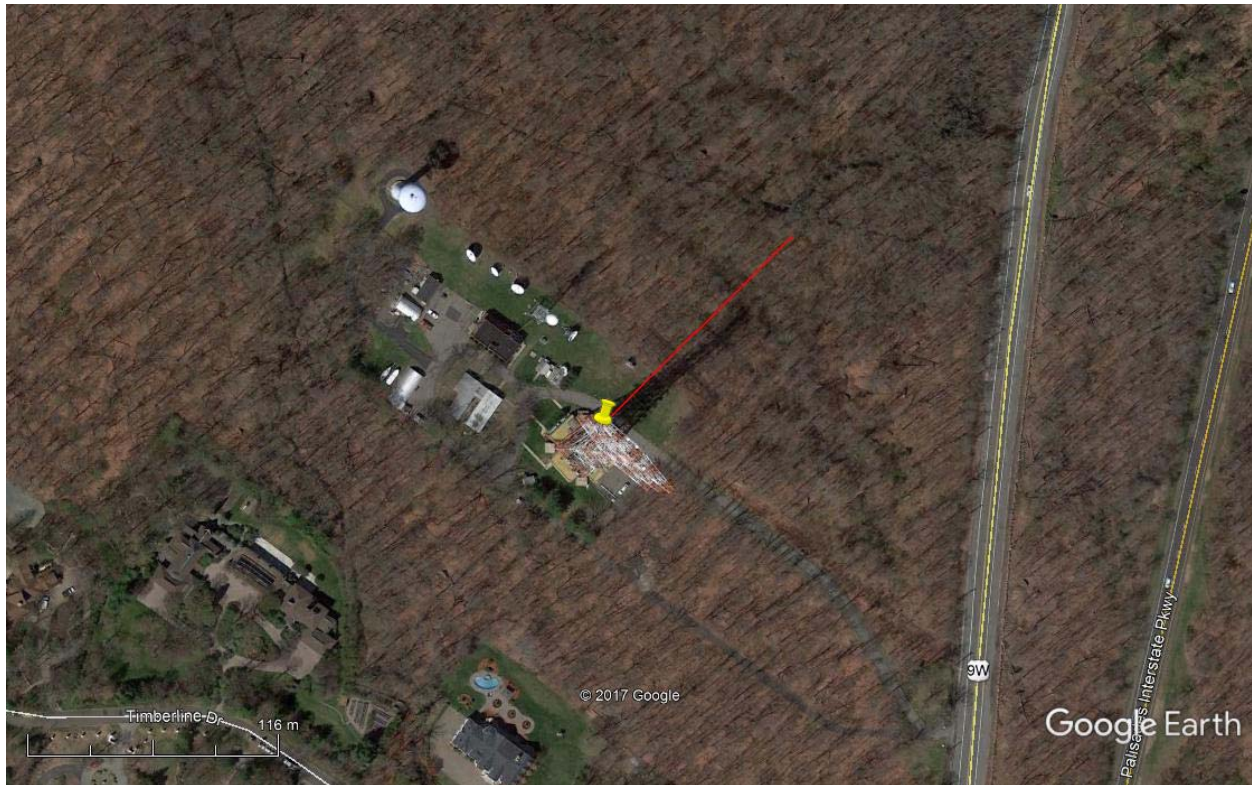
Therefore, applicant respectfully requests a waiver of C.F.R. 74.1204 based on no population within the area of predicted interference.

EXHIBIT 13 - A1
74.1204(d) Showing
252D
White Pains, NY

ERP (kw): 0.09
Height of Antenna above Ground (m): 60
Translator's IX Contour: 114.8
Antenna Type: Scala CL-V

<u>Depression Angle from Horizon</u>	<u>Antenna Relative Field</u>	<u>ERP (kw) from the Antenna RF</u>	<u>Dist. To IX Contour (m)</u>	<u>Height IX Contour Above Ground (m)</u>
0	1.000	0.0900	121.0936	60.000
5	0.980	0.0864	118.6717	49.657
10	0.950	0.0812	115.0389	40.024
15	0.895	0.0721	108.3788	31.950
20	0.820	0.0605	99.2968	26.039
25	0.735	0.0486	89.0038	22.385
30	0.645	0.0374	78.1054	20.947
35	0.563	0.0285	68.1152	20.931
40	0.470	0.0199	56.9140	23.416
45	0.360	0.0117	43.5937	29.175
50	0.250	0.0056	30.2734	36.809
55	0.155	0.0022	18.7695	44.625
60	0.085	0.0007	10.2930	51.086
65	0.045	0.0002	5.4492	55.061
70	0.020	0.0000	2.4219	57.724
75	0.010	0.0000	1.2109	58.830
80	0.010	0.0000	1.2109	58.807
85	0.010	0.0000	1.2109	58.794
90	0.010	0.0000	1.2109	58.789

Exhibit 13-A2



Yellow Pin Marker

NAD27

40-57-38.6 N 73-55-22.5 W

Red Line Marker: 122m at 45 degrees true north, the direction of the main lobe