

EXHIBIT 1

Nevada Small Business
Development Center

State Demographer's Office

University of Nevada, Reno • Mail Stop 032 • Reno, Nevada 89557-0100

Phone: (775) 784-6353 • Fax (775) 784-4337 • www.nsbdc.org

June 7, 2006

Scott Mahalick
Managing Partner
Aurora Media, LLC
7251 West Lake Mead Blvd
Suite 300
Las Vegas, NV 89128

Re: Governor Certified Population, 1998-2005

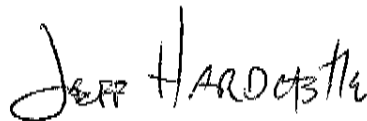
Dear Mr. Mahalick:

Per your request, I have enclosed a copy of the Governor Certified Population of Nevada's Counties, Cities and Towns, 1986 to 2005, as certified by Nevada Governor Kenny Guinn on February 27, 2006.

I prepared the enclosed estimates pursuant to Section 360.300 to .390 of the Nevada Administrative Code. The estimates were issued by the Nevada Department of Taxation pursuant to Section 360.283 of the Nevada Revised Statutes.

Thank you for your interest.

Sincerely,

A handwritten signature in black ink that reads "Jeff Hardcastle". The signature is written in a cursive, slightly stylized font.

Jeff Hardcastle
State of Nevada Demographer



KENNY C. GUINN
Governor

OFFICE OF THE GOVERNOR

February 27, 2006

Chuck Chinnock
Director
Department of Taxation
1550 E College Pkwy, Suite 115
Carson City, NV 89706

Dear Director Chinnock:

In response to your letter of February 21, 2006, and in accordance with the provisions of NRS 360.285, I hereby certify the estimated population figures for Nevada, its counties, incorporated cities, and all of its unincorporated towns as of July 1, 2005.

Sincerely,

A handwritten signature of Kenny C. Guinn in dark ink, written over a horizontal line.

KENNY C. GUINN
Governor

KGM/lf

Governor Certified Population of Nevada's Counties, Cities and Towns 1986 to 2005

Estimates from NV Department of Taxation and NV State Demographer, University of NV, Reno

	JULY 1 2003	Percent Change 7/03 - 7/04	JULY 1 2004	Percent Change 7/04 - 7/05	JULY 1 2005
State of Nevada Counties	2,296,566	5.0%	2,410,768	4.5%	2,518,869
Cities					
Towns					
Carson City	55,220	1.7%	56,146	1.7%	57,104
Churchill County	25,808	1.2%	26,106	1.8%	26,585
Fallon	8,301	1.2%	8,398	-0.7%	8,339
Clark County	1,620,748	5.8%	1,715,337	4.7%	1,796,380
Boulder City	14,934	0.8%	15,058	1.0%	15,203
Henderson	217,448	5.8%	229,984	4.8%	241,134
Las Vegas	528,617	4.0%	549,571	3.7%	569,838
Mesquite	13,895	14.3%	15,881	3.4%	16,423
North Las Vegas	146,005	13.0%	164,971	9.2%	180,219
Bunkerville	1,165	1.7%	1,185	1.1%	1,198
Enterprise	62,001	27.9%	79,299	20.3%	95,377
Indian Springs	1,619	2.6%	1,661	1.1%	1,679
Laughlin	6,952	16.6%	8,105	1.5%	8,226
Moapa	1,364	-12.0%	1,200	5.1%	1,261
Moapa Valley	6,323	3.6%	6,549	2.7%	6,726
Mt. Charleston	873	2.4%	894	-1.7%	879
Paradise	185,304	1.9%	188,768	1.5%	191,650
Searchlight	1,073	3.1%	1,106	-1.6%	1,088
Spring Valley	150,402	7.2%	161,286	2.5%	165,335
Summerlin	16,300	9.5%	17,841	13.5%	20,256
Sunrise Manor	181,354	1.9%	184,801	0.9%	186,511
Whitney	20,640	5.3%	21,738	24.9%	27,155
Winchester	34,378	-1.3%	33,917	3.8%	35,208

Note: Unincorporated Town population estimates began in 1996.

Note: This series represents the estimates as certified by NV's Governor each year. It is not a time series reflecting Census 2000 and changes in the 1990 to 2000 series.

Governor Certified Population of Nevada's Counties, Cities and Towns 1986 to 2005

Estimates from NV Department of Taxation and NV State Demographer, University of NV, Reno

	JULY 1 2003	Percent Change 7/03 - 7/04	JULY 1 2004	Percent Change 7/04 - 7/05	JULY 1 2005
State of Nevada Counties	2,296,566	5.0%	2,410,768	4.5%	2,518,869
Cities					
Towns					
Lander County	5,277	1.5%	5,357	2.8%	5,509
Austin	271	8.1%	293	-1.6%	288
Battle Mountain	2,623	0.9%	2,645	1.8%	2,692
Kingston	271	-11.7%	239	20.5%	288
Lincoln County	3,749	1.9%	3,822	1.7%	3,886
Caliente	1,184	-14.4%	1,014	0.2%	1,015
Alamo	428	3.1%	441	-2.9%	428
Panaca	541	2.1%	552	1.8%	562
Pioche	659	1.5%	669	4.3%	698
Lyon County	41,244	8.2%	44,646	9.4%	48,860
Yerington	2,902	0.3%	2,912	2.3%	2,980
Fernley	11,718	17.6%	13,775	18.7%	16,357
Mineral County	4,687	-0.3%	4,673	-0.9%	4,629
Hawthorne	2,995	-0.9%	2,968	-0.4%	2,956
Luning	91	5.6%	97	-9.5%	87
Mina	278	6.8%	297	-7.0%	276
Walker Lake	318	0.0%	318	-2.5%	310

Note: Unincorporated Town population estimates began in 1996.

Note: This series represents the estimates as certified by NV's Governor each year. It is not a time series reflecting Census 2000 and changes in the 1990 to 2000 series.

EXHIBIT 2

[USPS Home](#) | [FAQs](#)[ZIP Code Lookup](#)

Find a City by ZIP Code™ Results

You Gave Us

89025

[Do Another Lookup](#)



Cities in a ZIP Code may be referred to by more than one name or spelling. These results indicate the actual city name.

Actual City name in **89025** (PO BOX) 

MOAPA, NV

Related Links

Calculate Postage

Calculate postage for your letter or package online!

[Rate Calculator](#)

Print Shipping Labels

Print shipping labels from your desktop and pay online.

[Click-N-Ship®](#)

[Other Postage](#)

Business or Residence Lookup

[Yellow Pages](#)

Find a business nationwide.

[White Pages](#)

Find a residence nationwide.

powered by **Switchboard**

[Site Map](#)

[Contact Us](#)

[Forms](#)

[Gov't Services](#)

[Jobs](#)

| [National & Premier Accounts](#)

Copyright © 1999-2005 USPS. All Rights Reserved. [Terms of Use](#) [Privacy Policy](#) [NoFEAR Act](#) [EEO Data](#)



[Postal Inspectors](#)
[Preserving the Trust](#)



[Inspector General](#)
[Promoting Integrity](#)

89025 ZIP Code Community Profile

89025 ZIP Code Community Profile includes census, demographic and income data, parks, schools, libraries, hospitals, airports, environmental conditions, local newspapers, media outlets, employment, maps, coordinates and aerial photos

Associated Cities

[Moapa, NV](#)

City Name Type

Default Name

County: [Clark](#) **Primary Area Code:** [702](#)

[Moapa ZIP Codes](#) ****[Census Data ZIP Code 89025](#)****

Time Zone: **Pacific** (Standard Time: GMT -8 hours, DST: GMT -7 hours).

Coordinates: **Latitude 36.68 & Longitude -114.62** (ZIP Code Centroid)

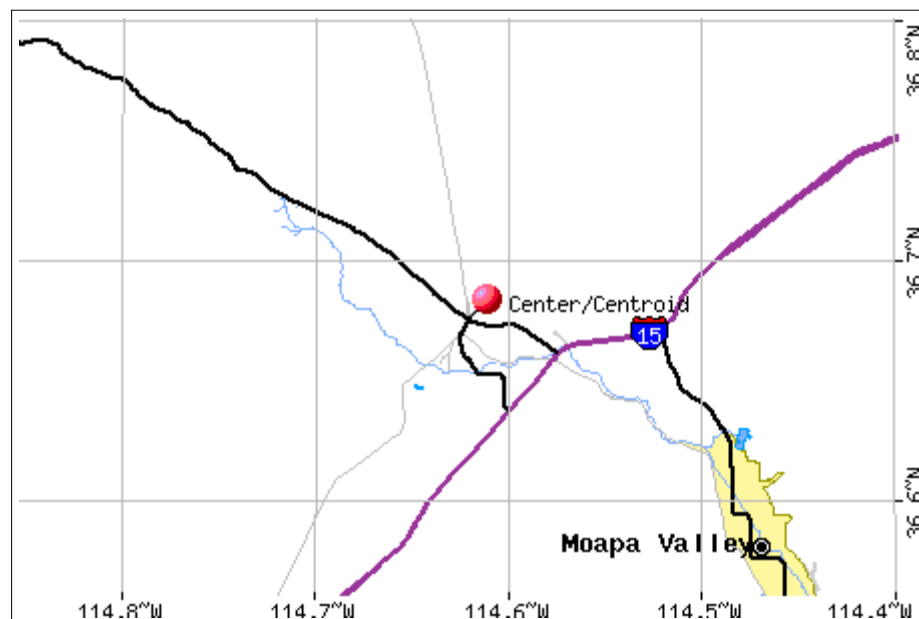
Moapa, NV



9:55 AM PST
Clear
46°F
NE 12 MPH

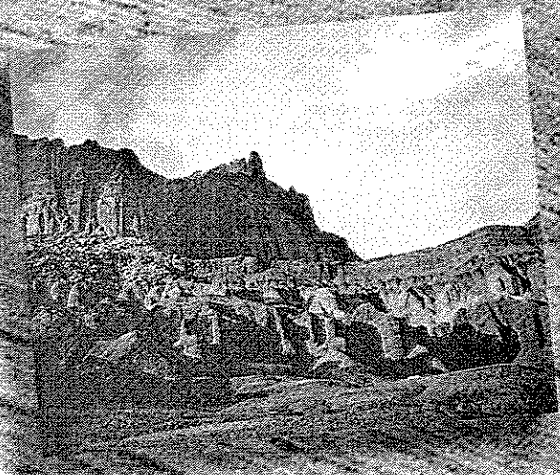
[Moapa Weather Forecast](#)

[Sunrise and Sunset](#) (any date)



DESTINATION MOAPA VALLEY

2004 Relocation and Visitors Guide



Moapa Valley Chamber of Commerce

Featuring the Communities of Overton, Logandale, Glendale and Moapa

Community Government & Education

Community Government:

The towns of Overton and Logandale were merged in 1981 into one unincorporated town, Moapa Valley, although each retain their own zip code and post office. Moapa and Moapa Valley are two separate unincorporated towns. The Clark County Manager and the Clark County Commissioners (BCC) govern Moapa and Moapa Valley.

The Clark County Commissioners appoint a five member Town Advisory Board (TAB) for each town from the local citizenry to make recommendations on policy and funding in each community. Citizens interested in serving on the TAB, run for a two-year term in an unofficial community straw pole vote conducted during the general election in November. TAB members serve at the pleasure of the BCC and receive no financial compensation.

Moapa holds its regular Town Advisory Board meetings on the Thursday preceding the 3rd Tuesday of each month and its special call meetings on the Thursday preceding the 1st Tuesday of each month. The meeting agendas are posted at Calamity's Market-N-More, at the Moapa Library, at the Marley P. Robinson Justice Court and Community Center, at the Moapa Post Office, and at online at www.co.clark.nv.us/Administrative_Services/Town_Services/MTABIndex.htm.

Moapa Valley holds its regular Town Advisory Board meetings on the Wednesday before the 1st and 3rd Tuesday of each month. The meeting agendas are posted at the Overton and Logandale Post Offices, at the Moapa Valley Community Center in Overton, and online at www.co.clark.nv.us/Administrative_Services/Town_Services/MVTABIndex.htm.

In addition to the TAB, the Commissioners established a Northeast County office in the Moapa Valley Community Center. The staff at this office can answer

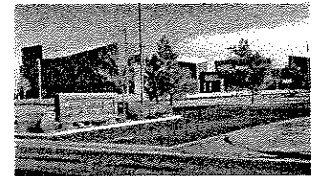
your general questions regarding any county service or issue you have. At this office you can also:

- Register to vote and get an absentee ballot request form
- Get a work permit
- See the Land Use Guide for the area

Specific county departments also have full-time representatives available to answer your detailed questions.

Residents have several ways to make sure their voice is heard:

- Attend the Town Advisory Board meetings to stay in touch with the community and its concerns.
- Call (397-6475) or visit the Northeast office. As your liaisons to County government, their primary job is to work with the TAB's and residents to make sure your voice is heard and issues are being addressed.



Education:

Grant M. Bowler Elementary School (702) 398-3233
Logandale
Ute V. Perkins Elementary School (702) 864-2444
Moapa
W. Mack Lyon Middle School, Overton (702) 397-8610
Moapa Valley High School, Logandale (702) 397-2611

Regional College and Universities:

UNLV	65 miles
Dixie College	75 miles
Community College of Southern Nevada	60 miles

Local Adult and Continuing Education:

Community College of Southern Nevada, Overton
Campus at Moapa Valley High School

PLAZA MOTEL & APARTMENTS



(702) 397-2414

Fax: (702) 397-6085

Proprietors: D.C. & Patty Williams
e-mail: plaza1@mvdsl.com

207 S. Moapa Valley Blvd. ~ P.O. Box 4
Overton, NV 89040



Dr. Bret R. Staley
Chiropractic Physician

Ph: (702) 397-2273 / 397-CARE
Fax: (702) 397-2705

1170 N. Moapa Valley Blvd. Suite C
PO Box 1350
Overton, NV 89040

Old Logandale School Historical and Cultural Society operates the old Logandale School Community Center that has meeting space, a family history library and a small museum.

Lost City Museum (see page 13)

Entertainment:

Pioneer Movie Theater. Also hosts various productions.

Health Care:

Medical Doctors and complete Nursing staff, Optometrists, Dentists (full- and part-time), Chiropractors, Veterinarian, and an Urgent Care clinic. Other specialists available in Las Vegas or St. George, UT.

Hospitals:

Mesa View Regional Hospital in Mesquite. Also six hospitals in Las Vegas and Dixie Regional Medical Center in St. George, UT.

Libraries:

Clark County Branch, Overton (lower valley):
Moapa Valley Library (702) 397-2690
PO Box 397, 350 N Moapa Valley Blvd, Overton

Clark County Branch, Moapa (upper valley):
Moapa Town Library (702) 864-2438
PO Box 250, 1340 East Hwy. 168, Moapa

Newspapers:

Moapa Valley Progress (local) (702) 398-3645
Daily Las Vegas newspapers are also available.

Parks & Recreation:

Parks and Community Services (702) 398-7480
1301 W. Whipple Ave, Logandale

Places of Worship:

Calvary Community Church, Church of Jesus Christ of Latter-Day Saints, Lake Mead Baptist Church, Moapa Valley Church of The Nazarene, St. John's Catholic Church, New Hope Christian Church, and the Moapa Christian Church.

Television:

Reception is available from six Las Vegas stations and two Salt Lake City, UT stations. Charter Communications provides cable television service with 14 basic plus premium channels in the Overton and Logandale area.

Utilities:

Water:
Moapa Valley Water District (702) 397-6893
PO Box 257, 601 N Moapa Valley Blvd, Overton

Electric:

Overton Power District No.5 (702) 397-2512
615 N Moapa Valley Blvd. Overton

Telephone:

Moapa Valley Telephone Co, Inc. (702) 397-2601
183 S Andersen St, Overton
Repair: (702) 397-2562

Garbage:

Republic Services of Southern Nevada (800) 752-8719
770 E Sahara Ave, PO Box 98508, Las Vegas

Sewer:

Clark County Water Reclamation (800) 782-4324
5857 E Flamingo Rd, Las Vegas

Septic: (Permits and Inspections)

Clark County Health Department (702) 385-1291
625 Shadow Lane, Las Vegas

Irrigation Water:

Muddy Valley Irrigation Co. (702) 397-2709
Logandale, Nevada

CLARK COUNTY PARKS & COMMUNITY SERVICES

Kids Korner PreschoolSept - May

Ages 3 - 5

Youth Sports

BasketballJan - Feb

BaseballMarch - May

T-BalMarch - May

SoccerSept - Oct

Flag FootballNov - Dec

AquaticsJune - Aug

Summer Fun ProgramJune - Aug

Craft FairOct - Nov

Halloween Fun/Spook AlleyOct

For information on any of the activities above
or a facility rental, please call

398-7480

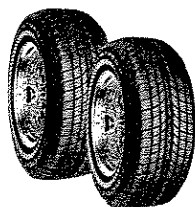


"WHAT WE DO IS GOOD FOR YOU!"

Valley Service Center

For All Your Tire and
Automotive Needs

Complete Tire Alignment
Oil Changes
Brake Center



TOYO • BF GOODRICH
MICHELIN • COOPER
HANKOOK

397-8997

Mon - Fri: 8AM to 5PM • Sat: 8AM to Noon

140 S. Moapa Valley Blvd.
Overton, NV 89040

CHURCHES

St. John's Catholic Church397-8096
150 N Moapa Valley Blvd, PO Box 457, Overton 89040

COMMUNITY SERVICES

Cappalappa Family Resource Center397-6400
320 N Moapa Valley Blvd, PO Box 1860, Overton 89040

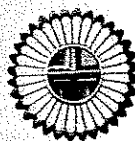
Clark County Northeast Office397-6475
320 N Moapa Valley Blvd, PO Box 837, Overton 89040
SEE OUR AD ON PAGE 10

Clark County Parks & Community Services398-7480
PO Box 327, Logandale 89021
SEE OUR AD ON PAGE 11

KACHINA EMBROIDERY

For All Your Embroidery
& Silk Screening Needs

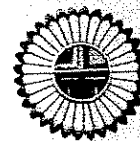
Jackets - Shirts - Polos - T-Shirts
Caps - Towels - Bags - and more!



RUBY DAVIS

2555 Lou Street • PO. Box 1099
Overton, NV 89040

(702) 397-2570



CULTURAL ORGANIZATIONS

Lost City Museum397-2193
721 S Moapa Valley Blvd, PO Box 807, Overton 89040
SEE OUR AD ON PAGE 13

Moapa Valley Arts Council398-3090
PO Box 1617, Overton 89040

Old Logandale School Historical & Cultural Society398-7272
3011 N Moapa Valley Blvd, PO Box 65, Logandale 89021

DENTISTS

Lance K. Robertson, DDS397-8844
1170 N Moapa Valley Blvd Suite A, PO Box 839, Overton 89040

EDUCATION

Community College of Southern Nevada398-7545
2400 N St. Joseph, PO Box 359, Logandale 89021

University of Nevada Cooperative Extension397-2604
1897 N Moapa Valley Blvd, PO Box 126, Logandale 89021

EMBROIDERY/TROPHIES & ENGRAVING

Harmony Embroidery Inc.398-3631
PO Box 435, Logandale 89021
SEE OUR AD ON PAGE 8

Kachina Enterprises397-2570
2555 Lou St, PO Box 1099, Overton 89040
SEE OUR AD ON THIS PAGE

Top Hat Company346-8400
312 W Mesquite Blvd, Mesquite 89027

FAIR/RODEO

Clark County Fair and Rodeo398-3247
1301 W Whipple Ave, PO Box 143, Logandale 89021

GIFTS/FLORAL/CANDLES/JEWELRY

Floral Designs/Country Gifts397-8834
385 S Moapa Valley Blvd, PO Box 245, Overton 89040
SEE OUR AD ON PAGE 25

Lucky Lady Products Intl. Inc.398-7674
2051 Jim Haworth Ct, PO Box 1396, Logandale 89021

Moapa Valley Candles & Distributing398-3182
1418 Red Sage Lane, PO Box 1348, Logandale 89021
SEE OUR AD ON PAGE 27

Glendale Service



CHEVRON GAS - MINI MART
CAFE - MOTEL - BAR

Cafe: (702) 864-2277 ~ Motel: 864-2288

Gas Station: 864-2555 ~ Bar: 864-2233

Fax: (702) 864-2410

2300 E. Glendale Blvd. • Glendale, NV 89025

P.O. Box 70 • Moapa, NV 89025

e-mail: vhester@mvdslc.com

"Helping To Build Dreams"
Texas Capital Bank

*Purchase • Refinance • Qualify
 • Construction to Final •*

Larry T. Skaggs

4000 South Eastern Ave.
 Suite #340
 Las Vegas, Nevada 89119
 Office: (702) 413-9200
 Fax: (702) 413-9250

(702) 397-2976
 Fax: (702) 397-2941
 Cell: (702) 279-1040

Moapa Valley Telephone Company397-2601
 183 S Anderson St, PO Box 365, Overton 89040
 SEE OUR AD ON PAGE 18

LOCKSMITH SERVICES

All-Rite Lock Shop397-8875
 650 Cooper St, PO Box 1531, Overton 89040

MANUFACTURING

Geneva Pipe of Nevada, LLC864-2620
 1501 Hwy. 168, PO Box 488, Moapa 89025

Kimfab398-3333
 981 W Cameron, PO Box 513, Logandale 89021

Nevada Power Company M/S 2367-5000
 PO Box 98910, Las Vegas 89025

The Solutions Center397-6760

MARINAS/MARINE SUPPLIES

Echo Bay Resort & Marina394-4066
 Echo Bay, HC 30, Box 30, Overton 89040
 SEE OUR AD ON PAGE 31 (BACK INSIDE COVER)

Overton Beach Marina394-4040
 Overton Beach, HC 30, Box 7, Overton 89040
 SEE OUR AD ON PAGE 16

MARTIAL ARTS TRAINING

Moapa Valley Academy of Martial Arts, Inc.397-5425
 145 S Moapa Valley Blvd #4, PO Box 2353, Overton 89040



Fresh, Hot, Buttered Popcorn!

(702) 397-2307

120 S. Moapa Valley Blvd. ~ Overton, NV 89040

Tonya Williams
 Owner



SHAPE
Fitness Center

3113 N. Moapa Valley Blvd.
 Logandale, NV 89021
 Phone: 702-398-7447
 Fax: 702-398-3848
 e-mail: shape@mvdsl.com

MORTGAGES

Texas Capital Bank397-2976
 PO Box 992, Logandale 89021
 SEE OUR AD ON THIS PAGE

NEWSPAPERS & PUBLICATIONS

Moapa Valley Progress398-3645
 1545 W Navajo Ave, PO Box 800, Logandale 89021
 SEE OUR AD ON PAGE 20

ORGANIZATIONS & HOBBIES

Cactus Cruisers Car Club398-3737
 PO Box 994, Logandale 89021

Old Logandale School Historical & Cultural Society
 3011 N Moapa Valley Blvd, Logandale 89021

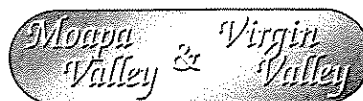
PROFESSIONAL & PERSONAL SERVICES

Benefit Capital Associates, Inc.398-3222
 3235 N Pioneer Rd, PO Box 542, Logandale 89021

REAL ESTATE

Coldwell Banker Robison Realty398-7000
 2885 N Moapa Valley Blvd, PO Box 100, Logandale 89021
 SEE OUR AD ON THE BACK COVER

Keller-Williams Realty397-2600
 196 S Moapa Valley Blvd #1, PO Box 1410, Overton 89040
 SEE OUR AD ON PAGE 3



MORTUARIES

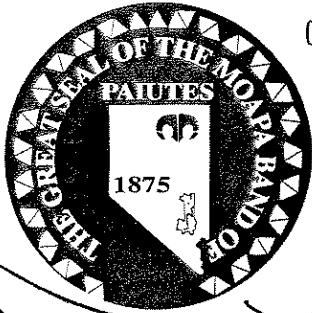
Brian C. Rebman
 Funeral Director

Moapa Valley
 5090 N. Moapa Valley Blvd.
 Logandale, Nevada 89021
 (702) 398-3600

Fax: 398-3691

Virgin Valley
 320 Old Mill Rd.
 Mesquite, Nevada 89027
 (702) 346-6060

MOAPA PAIUTE TRAVEL PLAZA



Cigarettes • Liquor • Fireworks • Indian Crafts
Gas & Diesel Available

See Our New Travel & Craft Center
and Food Court
Newly Expanded Spring '04

(702) 864-2602

I-15 North @ Exit 75
Valley of Fire Exit

Light Realty397-8391
240 S Moapa Valley Blvd, PO Box 1649, Overton 89040
SEE OUR AD ON PAGE 17

Prudential Land Brokers Realty397-8383
137 N Moapa Valley Blvd, PO Box 488, Overton 89040
SEE OUR AD ON PAGE 28

REAL ESTATE APPRAISAL

Jensen's Appraisal398-3855
4090 Milkyway Circle, PO Box 520, Logandale 89021

RENTAL CENTERS

Valley Rental Center Self Storage397-8311
4025 N Moapa Valley Blvd, PO Box 177, Logandale 89021
SEE OUR AD ON PAGE 15

RESTAURANTS

Inside Scoop397-2055
395 S Moapa Valley Blvd, PO Box 748, Overton 89040
SEE OUR AD ON PAGE 22

McDonald's397-6736
310 S Moapa Valley Blvd, PO Box 1979, Overton 89021
SEE OUR AD ON PAGE 29

Sugar's Home Plate397-8084
309 S Moapa Valley Blvd, PO Box 1589, Overton 89040
SEE OUR AD ON PAGE 20

Tiffany's Pies and Subs398-3101
1925 W Whipple #20, PO Box 469, Logandale 89021
SEE OUR AD ON PAGE 21

Overton Motel

"Clean, Safe, Affordable Lodging"

Kitchenettes and Apartments Available

Daily, Weekly & Monthly Rates

Mini Fridge & Microwave in all Standard Rooms

(702) 397-2463

137 N. Moapa Valley Blvd. • Overton, NV 89040

ADVANTAGE CONSTRUCTION

P.O. Box 983
Logandale, NV 89021
NV Lic# 52460

Phone: 702-398-7447
Fax: 702-398-3848
Cell: 702-376-5675

e-mail: advantageconstruction@mvdsl.com



QUALITY BUILT RIGHT IN

JASON WILLIAMS
Owner

RV PARKS/MOBILE HOMES

Echo Bay Resort & Marina394-4066
Echo Bay, HC 30, Box 30, Overton 89040
SEE OUR AD ON PAGE 31 (BACK INSIDE COVER)

Fun and Sun Mobile Homes and RV Park397-8383
280 N Cooper, PO Box 488, Overton 89040
SEE OUR AD ON PAGE 28

Overton Beach Marina394-4040
Overton Beach, HC 30, Box 7, Overton 89040
SEE OUR AD ON PAGE 16

Robbins Nest Mobile Village397-2364
479 S Moapa Valley Blvd, PO Box 130, Overton 89040

SENIOR CITIZEN ACTIVITIES

United Seniors Inc.397-8002
475 S Moapa Valley Blvd, PO Box 2039, Overton 89040
SEE OUR AD ON PAGE 22

STORAGE UNITS

Overton Storage397-6370
1080 S Moapa Valley Blvd, PO Box 95, Overton 89040

Valley Rental Center Self Storage397-8311
4025 N Moapa Valley Blvd, PO Box 177, Logandale 89021
SEE OUR AD ON PAGE 15

TELEPHONE COMPANIES

Moapa Valley Telephone Company397-2601
183 S Anderson St, PO Box 365, Overton 89040
SEE OUR AD ON PAGE 18



MOAPA VALLEY CANDLES AND DISTRIBUTING

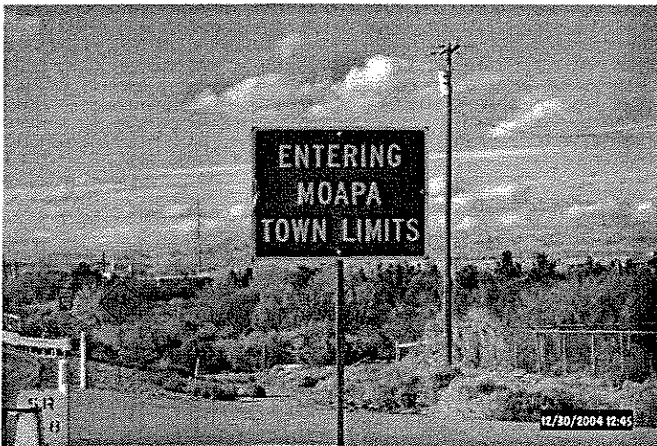
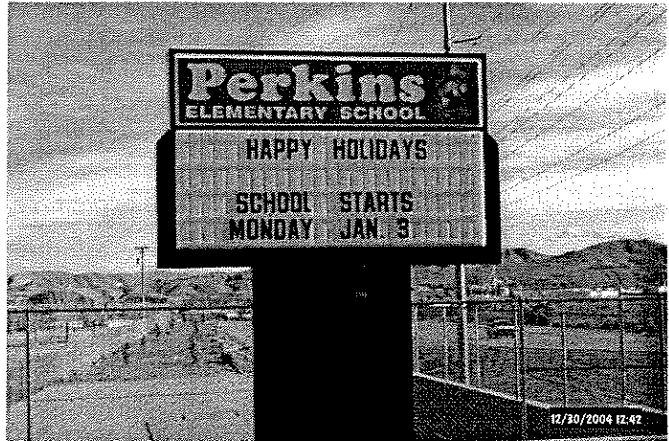
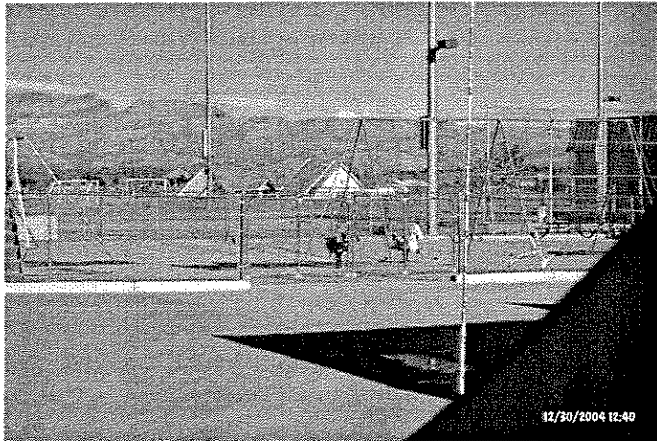
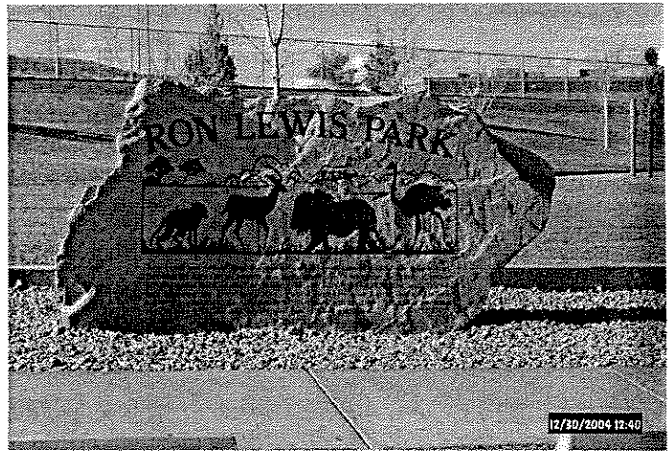
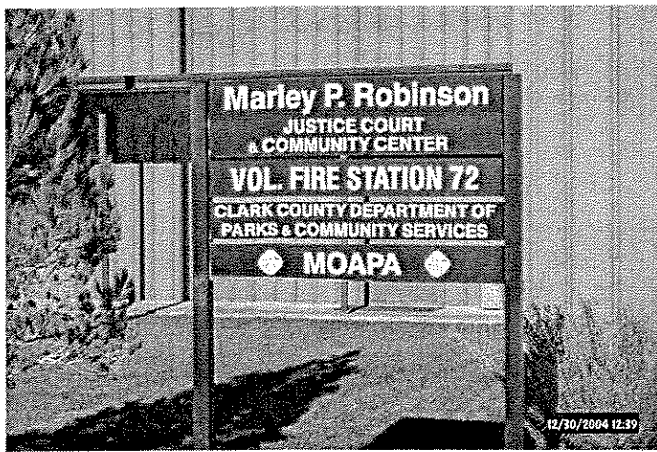
MeLissa Estes
Independent Distributor

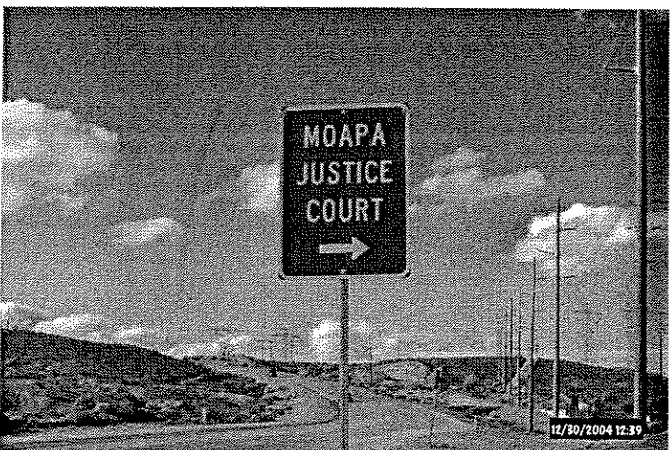
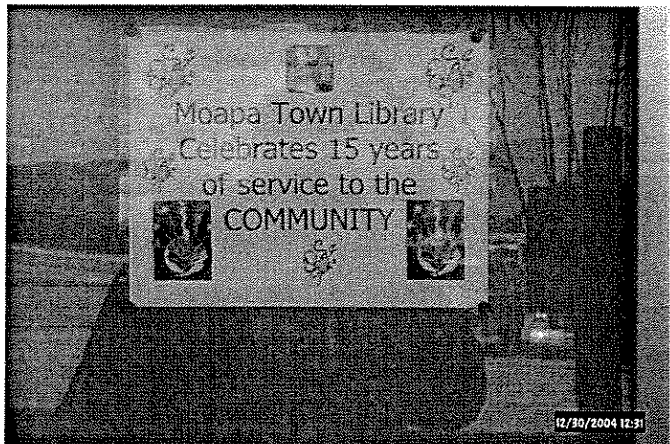
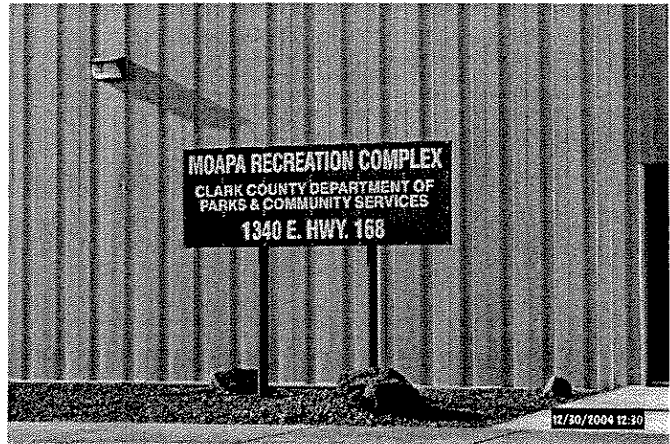
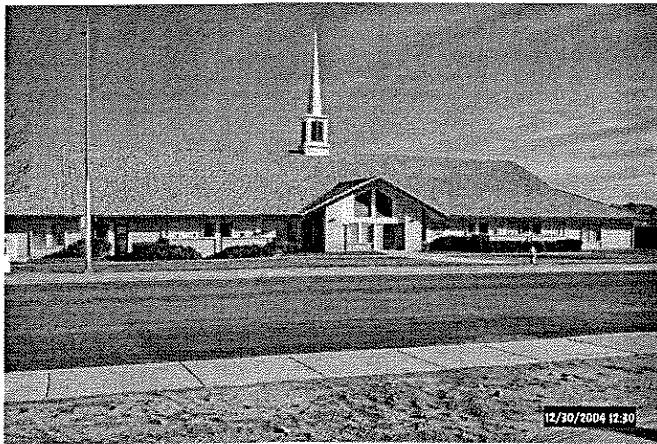
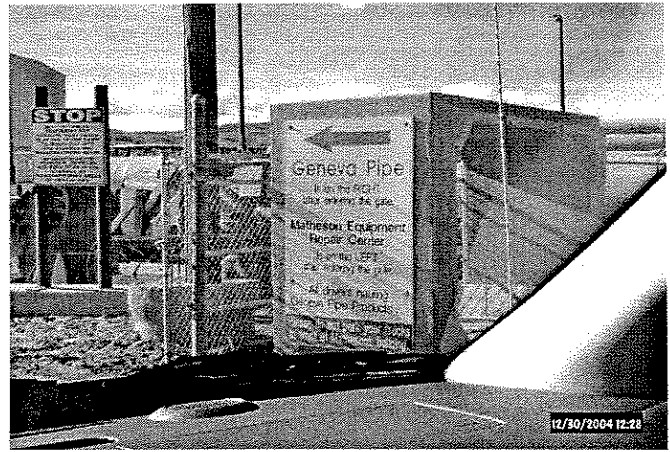
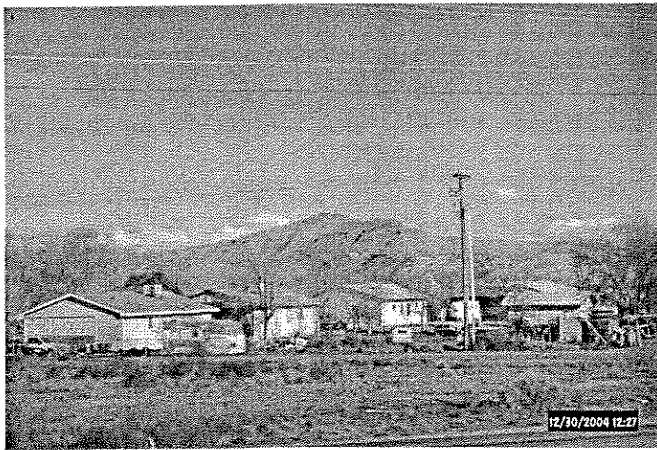
Individual Sales • Home Parties

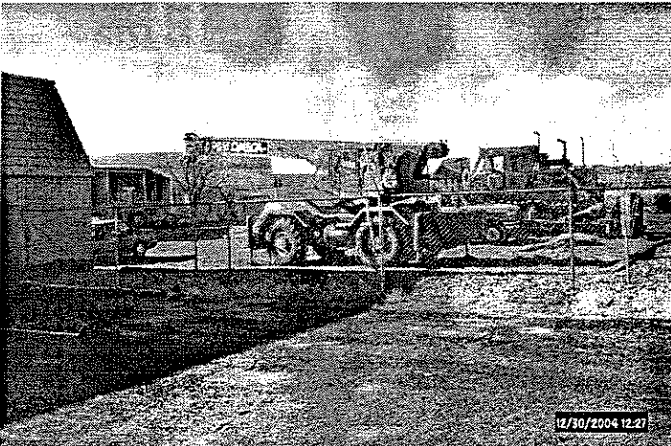
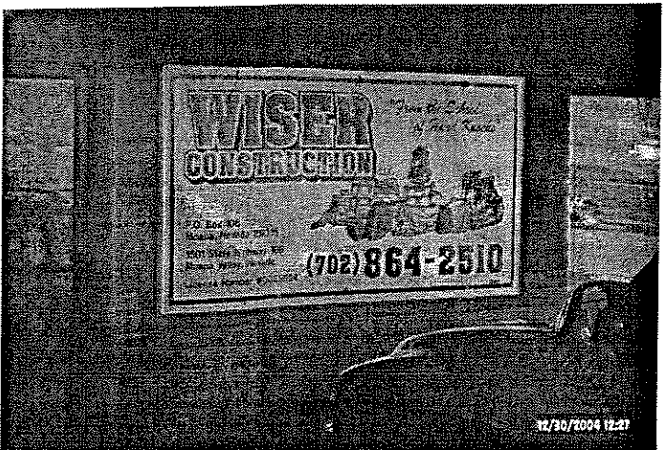
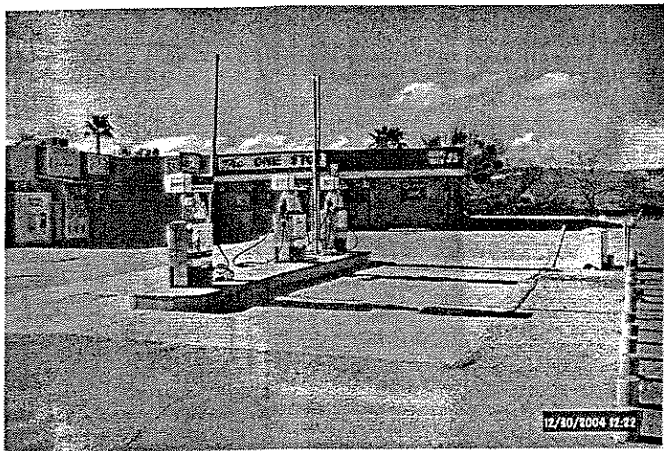
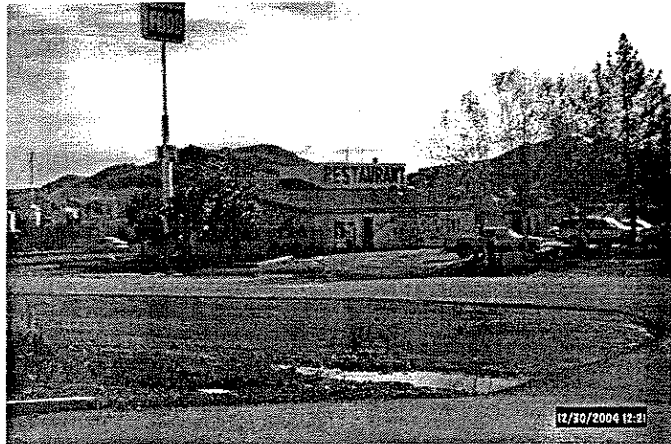
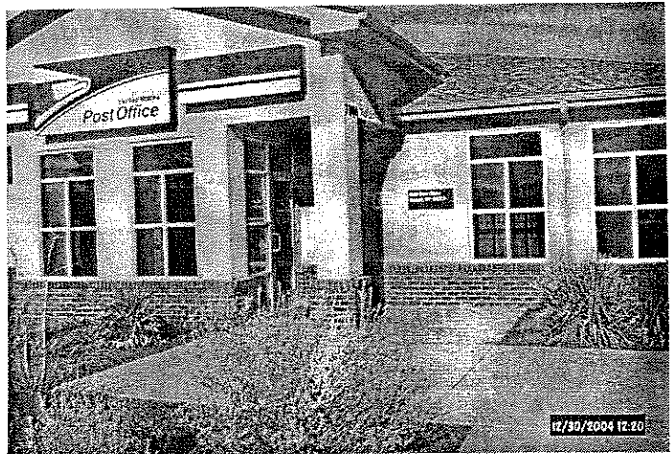
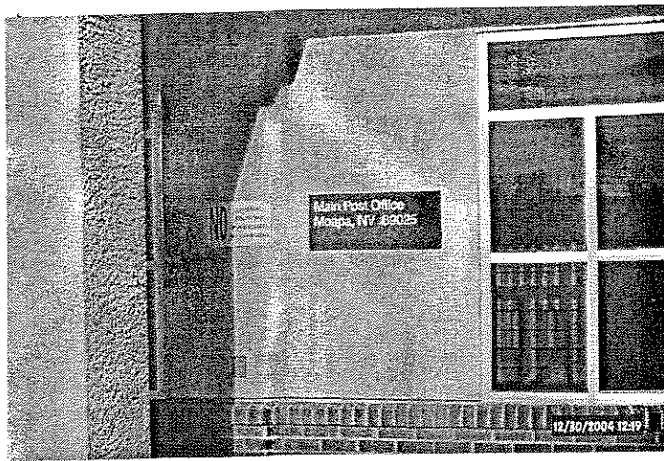
Retail Accounts • Fundraising

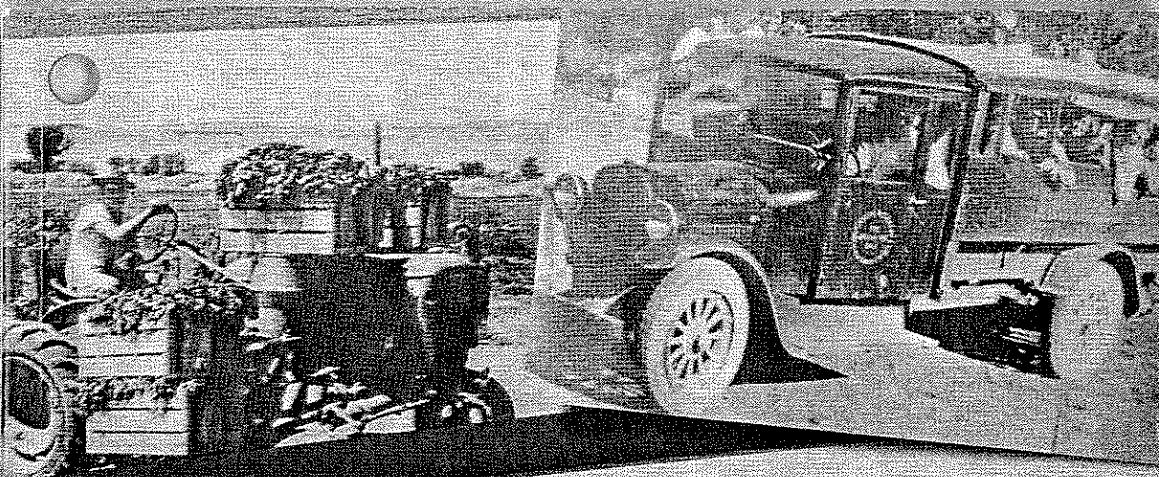
702 398 3182 pb
www.mygccandle.com/mvcandles
mvcandles@comnett.net

P.O. Box 1348
Logandale, NV 89021







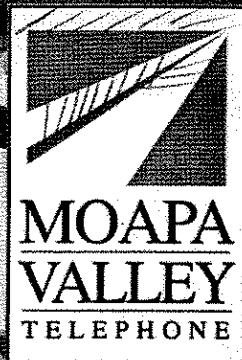


Proud of the Past, Prepared for the Future!



AREA CODE 702

Includes listings for Overton, Logandale, Glendale,
Moapa, Overton Beach, Stewart's Point and Echo Bay



Messer Nelda 351 W Bonelli St.....397-2358
 Messina Jennifer 425 W Stevens Av.....397-2462
 Metcalf A K 1785 N Metcalf Dr.....397-2323
 Metcalf Edward 3225 N Ash St.....398-3145

METCALF MORTUARY**5090 N Moapa Valley Blvd****Logandale.....398-3600**

Brian Rebman.....398-3481
 Metz Raymond & Judy Overton Beach.....394-4084
 Meyer Patrick
 Valley of Fire State Park #1.....397-2085
 Meyer Ronald N 3733 N Berkley.....398-3151
 Meyers Calvin Segmiller.....865-2025
 Meyers R 375 W Ryan Av Apt 101.....397-6550
 Mike D 54 Bowlin Av.....865-2873

MIKE'S FINE JEWELRY & REPAIR**259 S Moapa Valley Blvd****Overton.....397-2282**

Mildice Billy 945 Bunnell St.....398-3349
 Miles Andrea & Matthew
 441 Adelle Av.....397-6796
 Miller Celena A.....864-2128
 Miller Donald R
 2275 Napal Vista Circle.....397-2438
 Miller Edgar & Geraldine
 1675 N Zubia St.....397-6720
 Miller Gilbert D & Sharon L
 780 Lee Av.....397-8755
 Miller Glenda 3920 N Mateuse St.....398-3606
 Miller Jerry & Carman 375 W Joan Av.....397-2704
 Miller Kami Sue
 #27 Workie Way Moapa.....865-2004
 Miller Marvin G Sr.....397-6606
 Miller W Jack Stewart's Point Lot 38.....394-4165
 Millet Dennis & Judy 730 Lee Av.....397-6512
 Milligan Michael Echo Bay RV Sp 30.....394-4346
 Millington Scott & Darlene
 3995 N Moapa Valley Bl.....398-3010
 Millington Wayne L.....398-3983
 Millionheir Classic
 3355 N Taylor St Logandale.....398-3809
 Mills Robert & Dalisay
 2275 Bowman Rd.....398-7430
 Miranda Pennie & Ramon
 1795 N Lyman St.....397-6505
 Mitchell Cindy
 475 N Moapa Valley Bl Apt 3.....397-6998
 Mitchell Ronald 651 N Saddle St.....397-8618
 Mitchell Ruth 2939 Leavitt.....398-7073
 Mitchler Gerald 2475 N Anderson St.....397-2486
 Mitchler Gerald Jr 690 E Bryner.....397-8039
 Moapa Band Of Paiutes-Moapa Indian
 Reservation
 Moapa Tribal Ofc Lincoln St.....865-2787
 Moapa Tribal Vocational Rehabilitation
 Adult GED/Tutoring Office 12 Lincoln St
865-2084
 12 Lincoln St.....865-2081
 Moapa Paiute Travel Plaza.....864-2600
 Moapa Diabetic Program 12 Lincoln St Ste
 105.....865-2900
 Boys and Girls Club.....865-2716
 Health & Human Services.....865-2700
 Day Care Center.....865-2965
 Farm Shop.....865-2723
 Grocery Store.....865-2758
 Housing.....865-2730
 Reservation Police Department.....865-2828
 Multi-Purpose Building Ofc.....865-2957
 Pre-School Center.....865-2753
 Senior Center.....865-2925
 Social Services.....865-2708

(Continued on next column)

Moapa Band Of Paiutes-Moapa Indian
 Reservation Cont'd
 Tribal Court.....865-2845
 Water Quality.....865-2790

Moapa Christian Church
 Bowlin St.....865-2864

Moapa Community Center
 1340 E Hwy 168 Moapa.....864-2427

MOAPA E-Z RENTAL & FEED**475 N Moapa Valley Blvd****Overton.....397-6677****MOAPA PAIUTE TRAVEL PLAZA**

Fireworks-Smoke Shop

Interstate 15 Exit 75.....864-2600

Moapa Paiute Travel Plaza-Casino

Interstate 15 Exit 75.....864-2601

Moapa Recreation Center

1340 E Hwy 168.....864-2423

MOAPA TOWN LIBRARY

.....864-2438

Moapa Valley Academy Of Martial Arts Inc

145 S Moapa Valley Blvd Ste 4

Overton.....397-5425

Moapa Valley Arts Council

.....397-6090

Moapa Valley Candles & Distributing

PO Box 1348 Logandale.....398-3182

MOAPA VALLEY CHAMBER OF COMMERCE**320 N Moapa Valley Blvd...398-7160****MOAPA VALLEY CHIROPRACTIC****1170 N Moapa Valley Blvd Ste C****Overton.....397-2273**

Moapa Valley Church Of The Nazarene

324 N Whitmore St Overton.....397-8694

Moapa Valley Community Center

320 N Moapa Valley Blvd.....397-6475

Moapa Valley Dairy

1000 Hidden Valley Rd.....864-2223

MOAPA VALLEY FEDERAL CREDIT UNION**230 S Moapa Valley Blvd****Overton.....397-2390****1925 W Whipple Logandale**

.....398-7767

Moapa Valley Federal Credit Union

Administration Bld 1120 N Moapa Valley Blvd

.....397-6949

MOAPA VALLEY FREIGHT**PO Box 396 Overton.....398-3582**

Moapa Valley High School

2400 N St Joseph Overton.....397-2611

MOAPA VALLEY LIBRARY**350 N Moapa Valley Blvd****Overton.....397-2690****MOAPA VALLEY MEDICAL CLINIC****1170 N Moapa Valley Blvd Ste B****Overton.....397-2000**

EXHIBIT 3



U.S. Census Bureau

American FactFinder

FACT SHEET

Big River CDP, California

View a Fact Sheet for a **race, ethnic, or ancestry group**

Census 2000 Demographic Profile Highlights:

General Characteristics - show more >>

	Number	Percent	U.S.		
Total population	1,266			map	brief
Male	605	47.8	49.1%	map	brief
Female	661	52.2	50.9%	map	brief
Median age (years)	53.0	(X)	35.3	map	brief
Under 5 years	72	5.7	6.8%	map	
18 years and over	1,022	80.7	74.3%		
65 years and over	401	31.7	12.4%	map	brief
One race	1,231	97.2	97.6%		
White	1,075	84.9	75.1%	map	brief
Black or African American	32	2.5	12.3%	map	brief
American Indian and Alaska Native	32	2.5	0.9%	map	brief
Asian	12	0.9	3.6%	map	brief
Native Hawaiian and Other Pacific Islander	0	0.0	0.1%	map	brief
Some other race	80	6.3	5.5%	map	
Two or more races	35	2.8	2.4%	map	brief
Hispanic or Latino (of any race)	122	9.6	12.5%	map	brief
Household population	1,266	100.0	97.2%	map	brief
Group quarters population	0	0.0	2.8%	map	
Average household size	2.22	(X)	2.59	map	brief
Average family size	2.66	(X)	3.14	map	
Total housing units	1,053			map	
Occupied housing units	570	54.1	91.0%		brief
Owner-occupied housing units	460	80.7	66.2%	map	
Renter-occupied housing units	110	19.3	33.8%	map	brief
Vacant housing units	483	45.9	9.0%	map	

Social Characteristics - show more >>

	Number	Percent	U.S.		
Population 25 years and over	1,006				
High school graduate or higher	738	73.4	80.4%	map	brief
Bachelor's degree or higher	70	7.0	24.4%	map	
Civilian veterans (civilian population 18 years and over)	279	26.1	12.7%	map	brief
Disability status (population 5 years and over)	439	35.3	19.3%	map	brief
Foreign born	78	5.9	11.1%	map	brief
Male, Now married, except separated (population 15 years and over)	308	59.7	56.7%		brief
Female, Now married, except separated (population 15 years and over)	326	55.4	52.1%		brief
Speak a language other than English at home (population 5 years and over)	131	10.5	17.9%	map	brief

Economic Characteristics - show more >>

	Number	Percent	U.S.		
In labor force (population 16 years and over)	434	40.0	63.9%		brief
Mean travel time to work in minutes (workers 16 years and over)	18.1	(X)	25.5	map	brief
Median household income in 1999 (dollars)	23,488	(X)	41,994	map	
Median family income in 1999 (dollars)	26,250	(X)	50,046	map	
Per capita income in 1999 (dollars)	13,862	(X)	21,587	map	
Families below poverty level	51	13.1	9.2%	map	brief
Individuals below poverty level	242	18.5	12.4%	map	

Housing Characteristics - show more >>

	Number	Percent	U.S.		
Single-family owner-occupied homes	182				brief
Median value (dollars)	77,400	(X)	119,600	map	brief
Median of selected monthly owner costs	(X)	(X)			brief
With a mortgage (dollars)	619	(X)	1,088	map	
Not mortgaged (dollars)	233	(X)	295		

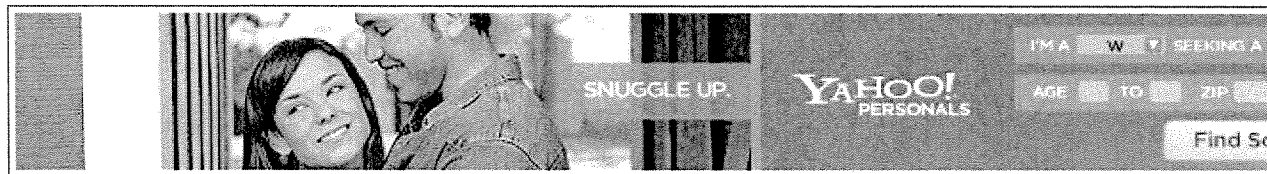
(X) Not applicable.

Yahoo! My Yahoo! Mail

Search:

YAHOO! REAL ESTATE**Sign In**
New User? Sign Up

Real Estate

[Real Estate Home](#)[Apartments for Rent](#)[Home Values](#)[Home Loans](#)
[Post a Home Listing](#) | [Research Communities](#) | [Research Schools](#) | [Find a REALTOR®](#) | [Get Your Credit Score](#) | [What's My Home](#)
Find a Home**City & State, or Zip****Price Range:**
 \$0 to
 \$30,000
Beds:

Studio+

Baths:

Any

- ☒ **Homes for Sale (MLS)**
- ☐ **Real Estate Classifieds**
- ☐ **New Homes**
- ☐ **Foreclosures**

Search**Features**

[Mortgages & Financing](#)

[Find a Lender](#)

[Today's Mortgage Rates](#)

[Loan Calculators](#)

[Credit Reports](#)

[Refinance Loans](#)

[Neighborhood Research](#)

[What's My Home Worth?](#)

[School Profiles](#)

[Neighborhood Profiles](#)

Neighborhood Profiles

Sponsored by

**Big River Neighborhood Profile****Location:** Big River, CA 92242[Search for Homes in this Area](#) | [View a Map](#) | [Glossary](#)**Demographics**

	Big River, CA 92242	Nation
Population of Big River	1743	11535
Median Age	50.5 years	37.47 ye
Median Household Income	\$25372	\$42350.
Percentage of Single Households	41.6%	41.53%
Percentage of Married Households	58.4%	58.46%
Percentage Families (households with children)	7.8%	24.32%
Average Household Size	2.08 people	2.57 pec
Percentage College or Better	5.9%	20.14%
Percentage White Collar	45.2%	47.14%

Cost of Living

	Big River, CA 92242	Nation
Cost of Living Index	109.9	99.52
Average Yearly Utility Cost	2557	3196.27
Average Household Total Consumer Expenditures	\$32104 per year	\$41075.
Average Household Education Expenditures	\$262 per year	\$450.93
Average Household Entertainment Expenditures	\$1616 per year	\$2207.0
Average Household Transportation Expenditures	\$1094 per year	\$1563.8
Average Household Retail Expenditures	\$14871 per year	\$18600.
Average Household Non-Retail Expenditures	\$17233 per year	\$22474.

Quality of Life

	Big River, CA 92242	Nation
Average Winter High Temperature	67.3 degrees	41.29 de
Average Winter Low Temperature	40.3 degrees	22.88 de
Average Summer High Temperature	108.3 degrees	86.56 de
Average Summer Low Temperature	59.3 degrees	62.35 de
Average Annual Precipitation	5.2 inches	38.69 in
Air Quality Index	11	44.59
Total Crime Index	7	3.60

Colorado River Indian Tribes

Wikipedia ⓘ



Colorado River Indian Tribes

The **Colorado River Indian Tribes** consist of four distinct tribes - the Mohave, Chemehuevi, Hopi and Navajo. Their reservations cover 1,119.4445 km² (432.22 sq mi) of land in Riverside and San Bernardino counties in California, and La Paz County, Arizona. Today there are only about 3,500 active members of the tribes. They are located in communities in and around Parker and Poston. The 2000 census reported a population of 9,201 persons residing on the reservation. The main economy for the tribes is derived from the agricultural industry, growing cotton, alfalfa and sorghum. Recently, they've added tourism to the economy with the opening of the BlueWater Resort and Casino. The largest community is the town of Parker.

Communities

- Big River, California
- Bluewater, Arizona
- Bluewater, California
- Parker, Arizona
- Poston, Arizona

References

- Colorado River Reservation, Arizona/California United States Census Bureau

This entry is from Wikipedia, the leading user-contributed encyclopedia. It may not have been reviewed by professional editors (see full disclaimer)

[Donate to Wikimedia](#)

↓ *more Answers below...*

Mentioned In ⓘ

Colorado River Indian Tribes is mentioned in these AnswerPages:

Colorado River Indian Tribes v. National Indian Gaming Commission

Cornwall Frazell Chee

Colorado River Indian Reservation

Native American tribes in Arizona

List of U.S. Indian Tribal Government Web sites

List of notable United States courts of appeals cases

Mohave

Raul Grijalva

List of Native American Tribal Entities

Navajo Nation



INTER TRIBAL COUNCIL of ARIZONA, INC.

Established by Tribal Governments to Provide Member Tribes a United Voice.

Photo By: Rob Quin

[ITCA Home](#)

[Current Events](#)

[About ITCA](#)

[Member Tribes](#)

[Programs](#)

[Board of Directors](#)

[ITCA Staff](#)

[Maps](#)

[History of Indian Voting in Arizona](#)

[Other Affiliates](#)

[Other Links](#)

[Contact Us](#)



Colorado River Indian Tribes

INTRODUCTORY INFORMATION

The Colorado River Indian Tribe's (CRIT) Reservation is located in western Arizona at Parker, 189 miles from Phoenix. The Reservation spans the Colorado River and has land in Arizona (La Paz County) and California (San Bernardino).

The Colorado River Indian Reservation was established March 3, 1865 for the "Indians of said river and its tributaries". The Indigenous people were the agricultural Mohaves and the Chemehuevis. In 1945, a portion of the Reservation was reserved for colonization by Indians of other tribes, specifically the Hopis and Navajos.

The CRIT economy is centered around agriculture, recreation, as well as government and light industry. The fertile river bottom lands and available water allows the production of agricultural and produce such as cotton, alfalfa, wheat, feed grains, lettuce and melons. Approximately 84,500 acres are now under cultivation and another 50,000 acres are available for development. CRIT has senior water rights to 717,000 acre feet of the Colorado River, which is almost one-third of the allotment for the state of Arizona.

GOVERNMENT AND COUNCIL MEMBERS LISTING:

- Daniel Eddy, Jr., Chairman
- Russell Welsh, Vice-Chairman
- Valerie Welsh-Tahbo, Council Member
- Fernando Flores, Sr., Council Member
- Herman Laffoon, Jr., Council Member
- Richard Armstrong, Council Member
- Dennis Patch, Council Member
- Dennis Welsh, Jr., Council Member
- Daphne Hill-Poolaw, Council Member

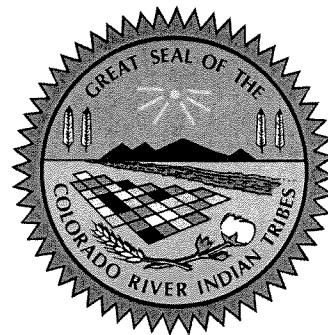
PUBLIC RELATIONS:

Attractions

The Colorado River is the Reservation's greatest recreational and most scenic attraction. Lake Moovalya and Havasu are formed behind Headgate and Parker Dams. Facilities for swimmers, boaters and water skiers may be found along the 90 miles of shoreline.

The CRIT Tribal Museum offers arts and crafts for sale. Museum admission is free, however donations are accepted. Please no cameras or video equipment allowed.

Historic sites include the Old Mohave Presbyterian Mission and the Poston Memorial Monument, located 18 miles south of Parker. The Memorial Monument marks the site of the Japanese Poston War Relocation Center where 17,867 were interned during 1942-1945.



**Route 1, Box 23-B
Parker, Arizona 85344
(928) 669-9211 Phone
(928) 669-1391 FAX**

Fishing for trout, striped bass, bass, catfish, crappie and bluegill is excellent in the river and 250 miles of irrigation canal. Dove, quail, waterfowl, rabbit and predator hunting is excellent. Reservation hunting and fishing permits are required. Camping permits are also available.

'Ahakhav Preserve

The 'Ahakhav Preserve is located near the Tribal Administration Complex on Rodeo Drive, off Mohave Road. The Preserve consist of about 250 acres of aquatic habitat, a landscaped picnic area, and a spur trail planted with native mesquite, cottonwood and willow. The picnic area is equipped with lush green grass, bar-be-que grills and picnic tables. The Preserve is great for environmental and nature study programs for youth and adults, wildlife observations, canoeing, hiking, swimming and camping. The serene setting is ideal for fishing, bird watching, family celebrations, weddings, picnics and plain old-fashioned bar-be-ques. Canoes are available for rent at the beach area, for small fees, and regular

Gaming - BlueWater Resort and Casino, 11300 Resort Drive, Parker, AZ

(520) 669-7000 (www.bluewaterfun.com) The new BlueWater Resort and Casino opened its doors in June 1999. The Casino offers a Las Vegas style atmosphere with slots, bingo, keno and poker. There are two restaurants, one for fine dining, a snack bar and two cocktail lounges. 200 luxury rooms and suites with river view are available as well as an indoor water park with four swimming pools, a water slide, children's pool and Jacuzzi. Live entertainment is provided at the outdoor amphitheater. For those with watercrafts, the facility has a 164 slip private marina. Miniature golf is available along with Olympic style exercise center, and various retail shops. The resort and Casino also features over 8,000 square feet of Conference Center with banquet and catering services. And, finally, a four-screen theater will open within the coming months.

Visitor Amenities

The land, the water and the climate make the Colorado River Indian Reservation an ideal vacation, business or retirement location.

SPECIAL TRIBAL EVENTS

- MARCH - Mohave Days Celebration (Establishment of the Reservation)
- JULY 4th - Annual 4th of July Celebration
- SEPTEMBER - National Indian Days Celebration - Little Miss, Junior Miss and Miss CRIT Pageants - All Indian Rodeo (New Date)
- NOVEMBER - Community Thanksgiving Dinner
- DECEMBER - Annual Christmas Program

Copyright 2003 ITCA. All rights reserve

[USPS Home](#)**ZIP Code Lookup****Find a ZIP + 4® Code By City Results**

You Gave Us
BIG RIVER, CA

[Lookup Another ZIP Code™](#)

entries 1-1 of 1

ZIP Code™ Matches in **BIG RIVER, CA**

92242

entries 1-1 of 1

Related Links**Calculate Postage**

Calculate postage for your
letter or package online!
[Rate Calculator](#)

Print Shipping Labels

Print shipping labels from
your desktop and pay online.
[Click-N-Ship®](#)
[Other Postage](#)

**Business or
Residence Lookup**

[Yellow Pages](#)
Find a business nationwide.
[White Pages](#)
Find a residence nationwide.

powered by [Switchboard](#)

[Site Map](#) [Contact Us](#) [Forms](#) [Gov't Services](#) [Jobs](#) | [National & Premier Accounts](#)

Copyright © 1999-2005 USPS. All Rights Reserved. [Terms of Use](#) [Privacy Policy](#) [NoFEAR Act](#) [EEO Data](#)



Postal Inspectors
[Preserving the Trust](#)



Inspector General
[Promoting Integrity](#)


[News Releases](#)
[Public Education](#)
[Human Resources](#)
[Community Calendar](#)

SB County
Emergency Info
Line 909.355.8800
Emergency
Dial 9-1-1 or
909.822.8071

South Desert Division

[▼ Mountain Division](#)
[▼ North Desert
Division](#)
[▼ South Desert
Division](#)
[▼ Valley Division](#)
[Home](#)
[Administration](#)
[Employee
Recognition](#)
[Fire & Rescue](#)
[Office of Emergency
Services](#)
[Office of the Fire
Marshal](#)
[Hazmat](#)
[Training](#)
[Communications](#)
[Support Services](#)
[Programs](#)
[Bids/RFP/RFQ](#)
[Links of Interest](#)
[Privacy Practices](#)
[County Paging](#)
[Outlook Exchange](#)
[Suggestion Box](#)


South Desert Division

The communities of the South Desert Division are a mosaic of California. With the strong presence of the "hometown" environment, visitors and residents to our division come from all walks of life and all areas of our state to enjoy the National Park, the many community events like the annual "Starry Nights Festival", community theatre productions including this year's "Man from La Mancha", as well as just enjoying a rest from the busy metropolitan areas. The River

Battalion, encompassing the City of Needles, and the communities of Havasu Lake and Big River draw millions of visitors each year for river and lakefront recreation. Our neighbor to the northeast, The United States Marine Corps Air/Ground Combat Training Center provides a subtle reminder of the strength and dedication of our armed services. Our fire crews work along side agencies representing the California Department of Forestry and Fire Protection, the National Park Service Fire crews, the City of Twentynine Palms Fire Department, USMC Fire Department, and the Morongo Valley Fire Department as well as the Morongo Basin Ambulance service. We have always provided, and will continue to provide, community-based services emphasizing the "local" link.

1st District Supervisor: Brad Mitzelfelt

3rd District Supervisor: Dennis Hansberger

Square Mileage: 7,968

Population Served: 49,648

Fire Stations: 16

Proudly Serving the Cities & Communities of:

Big River Landers

Earp Needles

Havasu Landing Pioneer Town

Johnson Valley Wonder Valley

San Bernardino Fire Department

150260 Capistrano Way
Big River, CA 92242
(760) 665-2303

Get Directions: To here - From here



Years In Business: 1950
[More from SuperPages.com »](#)

Web Pages

ICEMA - SAN BERNARDINO COUNTY PREHOSPITAL PROVIDERS

Star of Life ...
www.sbcounty.gov/icema/providers/sbprehospital.htm

San Bernardino County | Registrar of Voters | General Information
General Information Current Elections ...
www.sbcounty.gov/ROV/general_info/outreach%20Reg%20Voting.as...
[More results from www.sbcounty.gov]

Fire Department - Day Trip to the Inland Empire

... **Fire Department.** Big River Station 17 Map 150260 Capistrano Trail, Earp, CA 92242
760 665-2303 ...
www.laokay.com/FireDepartment_InlandEmpire.htm

©2007 Google



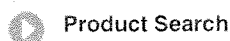
Phone Books

Specialty Directories

Marketing Tools

Motivate & Educate

U.S. Directories



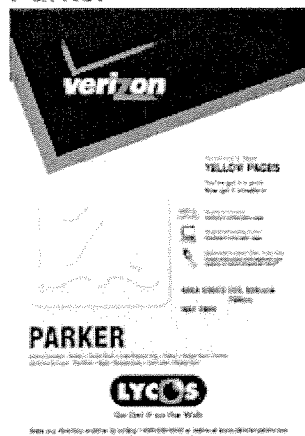
Product Search

Item # or keyword

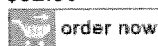
Search Categories

- Verizon Yellow Pages on CD-ROM
- Verizon print directories
- U.S. Directories
- Motivate & Educate
- Spanish Directories
- International
- Specialty Directories
- CD-ROM Resources
- Build Your Own List

Parker



Title: Parker
Item Number: 0035200001
State: ARIZONA
Publisher: IDEARC MEDIA CORP
Directory Type: COMBINED
Current Pub Date: 01-MAY-2006
Next Pub Date: 01-MAY-2007
Circulation: 52,400
Price: \$52.80


1-888-BOOKS-65

 Top U.S.
 Directories

Los Angeles

Manhattan

Recommended

Manhattan B2B

Zip Code Directory

What's New

Spanish Directories

Mobil Travel Guides

Combined yellow and white page directories offer a complete source of business information listed by category, along with residential and business listings sorted alphabetically. Many products also contain government listings by state and local offices and local information for the community they serve.

Demographic Information

Covered Communities

BIG RIVER, CA	BOUSE, AZ
CASTLE ROCK, AZ	EARP, CA
HAVASU LAKE, CA	LAKE HAVASU CITY, AZ
LOST LAKE, CA	PARKER DAM, CA
PARKER, AZ	POSTON, AZ
QUARTSITE WP ONLY, AZ	SALOME WP ONLY, AZ
WENDEN WP ONLY, AZ	

People interested in this item also purchased the following:

Blythe-Saiome	Boston White Pages
Boston Yellow Pages	West Nevada-Carson Valley
West Nevada-Lake Tahoe	Newark
Akron Greater	Phoenix
Colorado Springs	Denver Greater
MATANUSKA VALLEY	Flagstaff
Mohave County	Needles



Yahoo! My Yahoo! Mail

Search:



Sign In
New User? [Sign Up](#)

Yellow Pag

I want to become a... Click here to find out how.	Accountant	CPA	Criminal Investigator	Engineer	Manager	Paralegal
	Bounty Hunter	Police	Database Administrator	Financier	Marketer	Teacher
	Counselor	Detective	Software Professional	Project Manager	HR Officer	Theater
	Psychologist	Developer	Network Specialist	Graphic Designer	Social Worker	More

Yahoo! Yellow Pages

Your Search: Big River

Search

Search by Category or Business Name (e.g. Hotel or Holiday Inn)

Location: ★ Earp
[Save Location](#) | [Char](#)

Top > Search for: **Big River**

All Businesses

Sho

Business Name:

Address:

Big River Baptist Church
(760) 665-9111 [Write a Review](#)

7144 Rio Mesa Dr
Big River, CA [Map](#)

Big River Community Svc Dist
(760) 665-8454 [Write a Review](#)

Del Rey Dr & Rio Mesa Rd
Big River, CA [Map](#)

Big River Development
(760) 665-2194 [Write a Review](#)

150313 Rio Vista Dr
Big River, CA [Map](#)

Big River Head Start
(760) 665-5065 [Write a Review](#)

6434 Shoshone Trl
Big River, CA [Map](#)

Big River Inn
(760) 665-9440 [Write a Review](#)

150383 Del Rey Dr
Big River, CA [Map](#)

Big River Market
(760) 665-2007 [Write a Review](#)

150400 Turquoise Rd
Big River, CA [Map](#)

Big River Rv Park
(760) 665-9359 [Write a Review](#)

1 Marina St
Big River, CA [Map](#)

Big River Water Co
(760) 665-2385 [Write a Review](#)

150313 Rio Vista Dr
Big River, CA [Map](#)

Woodworth, Virginia - Big River Realty
(760) 665-2567 [Write a Review](#)

7113 Rio Mesa Dr
Big River, CA [Map](#)

Sh

Beyor

RV Parks, Campgrounds, Places to Shop & Dine in the Deserts

Listed Alphabetically by City

These merchants honor the Club OutWest card by offering a discount or extra value to cardholders. The 2006 edition of the RV Travel & Camping Guide for California, Nevada, Oregon & Washington includes a complimentary Club OutWest membership.

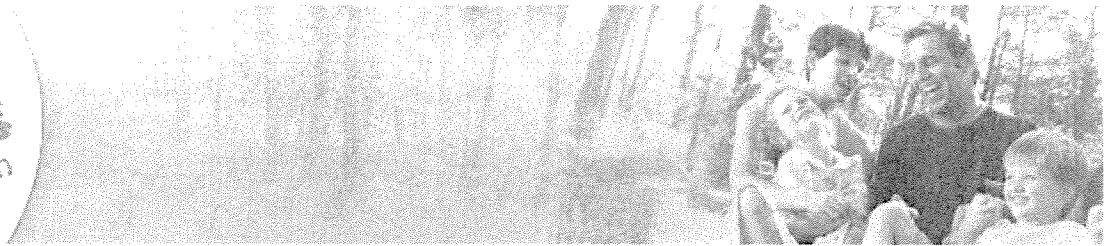
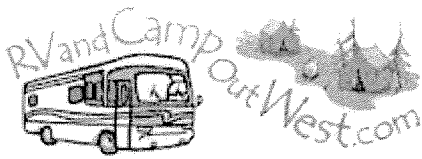
REGISTER YOUR CARD FOR AN ENTRY INTO THE MONTHLY DRAWING FOR \$100 in Fuel.

Central Coast | Central Valley | Deserts | Gold Country | High Sierra | Inland Empire | Los Angeles | North Coast | Orange County | Shasta
Cascade | San Diego | San Francisco | Oregon | Nevada | Washington



City	Business Name	Type of Business	Address	Phone	Disc.	Full Offer / Restrictions
Big River	Big River RV Park Reserve Online	RV Park	1 Marina Street	(760) 665-9359	20%	off 1 week per month - Valid October thru March. Or, stay 2 nights get 3rd night Free. Not valid on holidays or special events.
	One Stop Hair Shop	Health & Fitness	150432 Turquoise	(760) 665-5505	10%	Not applicable on products. Featuring Hair Cuts, Perms, Ear Piercing, Colors, Nails, Pedicures, Massage.
	The Dock Restaurant	Dining	150341 Del Rey Drive	(760) 665-5516	10%	Best Fish & Ribs on the River!
Earp	Wheel-Er In Family Resort	RV Park	PO Box 46	(760) 665-8487	Value	Stay 2 nights, get the third free. Excluding holiday periods: Memorial Day, July 4th & Labor Day.
Indio	Shadow Hills RV Resort Reserve Online	RV Park	40-655 Jefferson	(760) 360-8200	10%	No restrictions
Lake Havasu City	Ride the Waves Indoor Waterpark	Recreation	100 Park Avenue	(928) 453-8686	Value	Buy one, get one free - aquatics center.
Niland	Fountain of Youth Spa	RV Park	10249 Coachella Canal Rd	(888) 800-0772	Value	4th night free with 3 full price paid nights. Kids camp free.
Parker	Colorado River Buggy Expeditions	Recreation	601 Riverside Dr, Suite 6A	(928) 669-6171	15%	There's more to Parker than just the river, let us show you!
	Daniel's Best Jerky	Dining	1124 S. California Ave	(928) 669-0026	10%	Really Good Fresh Jerky!
	El Perico Mexican/American Restaurant	Dining	1317 Joshua	(928) 669-2626	10%	Real Freshness, Real Mexican
	Emerald Canyon Golf Course	Recreation	7351 Riverside Drive	(928) 667-3366	Value	2 for 1 bucket of balls, twilight rates every Tuesday & Thursday (excluding Jan-March) Public Welcome!
	F-N-T's Pet Corner	Pets	400 Joshua Avenue	(928) 669-8967	10%	We have everything you need for your "Best Friend"! Pet tags engraved while you wait.
	Face to Face Salon & Spa	Health & Fitness	1316 Joshua Ave	(928) 669-2602	10%	Featuring hairstyling, perm, color & weave, facial, pedicure, manicure, acrylic nails, massage therapy services.
	Grace Assembly of God	Other	1821 S Navajo	(928) 669-8465	Value	Free Salvation, and worship that is exciting!
	Java Jolt	Dining	520 Riverside Drive	(928) 669-6399	10%	Featuring hot & cold sandwiches - Latte, blended mochas & Italian sodas
	Jon's Kahuna's	Dining	10230 Riverside Drive	(928) 667-7461	Value	2 for 1 - any coffee, including gourmet coffees. Featuring Breakfast, Lunch - on the Parker Strip.
	Kentucky Fried					\$2 off large bucket of chicken (16 pc)

	Chicken / A&W	Dining	205 Riverside Drive	(928) 669-2842	Value	or Buy any hot dog combo, get a hot dog FREE
	Kountry Kottage Sweet Factory	Dining	1316 Joshua Avenue, Ste C	(928) 669-6300	10%	Featuring 24 flavors of Dreyers Ice Cream. Smoothies, shakes, sundaes, and candy.
	Pretty Paws	Pets	1301 Arizona Ave #3	(928) 669-9123	10%	Featuring full service Pet Grooming and Doggie Day Care - Certified all-breed groomer
	Raven Books & Photos	Recreation	1317 Joshua Ave #L	(928) 669-9311	Value	Buy \$15 or more, receive 10% off; \$25 or more, receive 20% off. Featuring books, photo restoration, photo copies, immigration & passport photos
	River Communications	Computers	601 Riverside Drive #7	(928) 669-2599	10%	Excludes dial-up internet service. Featuring Computer repair & Direct TV satellite installation
	S.B. Watercraft Rentals	Recreation	10084 Riverside Drive	(928) 667-2791	10%	No deposit required, Gas included, free customer pick-up/delivery within 2 miles.
	Sav-on Drugs	Health & Fitness	131 Riverside Dr.	(928) 669-6168	Value	FREE 6-pack water with \$20 or more purchase
	Spanky's RV & Marine Supply	RV Repair/Supply	1012 Joshua Avenue	(928) 669-1600	10%	On clothing, sunglasses & hats
	Spanky's RV & Marine Supply	RV Repair/Supply	820 California Avenue	(928) 669-1600	10%	Off clothing, sunglasses & hats.
Quartzsite	Skybound Sports	Recreation	Quartzsite	(208) 539-2792	10%	No restrictions. Certified Ultralights, Intro Flights & Instruction. Have a fun day!
Sky Valley	Caliente Springs	RV Park	70-200 Dillon Road	(888) 894-7727	20%	Valid Sun-Thurs. OR, specials - April-Jan 15: Bring a friend, get 2 nights free. Jan 16-Sept 15: \$15 off all reservations.
Yucca Valley	Yucca Valley RV Park	RV Park	55408 29 Palm Hwy	(760) 365-5596	10%	Or stay 2 nights, get the 3rd night free. Kids camp free, one extra vehicle pass free.



Big River RV Park

[Sell an RV](#)
[Login](#)
[User Profile](#)
[Contact Us](#)
[FAQ](#)

Browse

Home

- [Activities](#)
- [Facilities](#)
- [Facilities Map](#)
- [Rental Units](#)
- [Local Interests](#)
- [Rates](#)
- [Reservations](#)
- [Directions](#)
- [Calendar](#)
- [Guest Book](#)
- [Links](#)
- [Buy an RV](#)

Amenities On-Site

- >> Resort Atmosph
- >> Full Hookups
- >> Urban Setting
- >> Billiards
- >> Arcade Games
- >> Horseshoe Pits
- >> Croquet
- >> Laundry
- >> Credit Crd Acpt
- >> Club/Meet'g Rm

[.... More](#)

Amenities Near-By

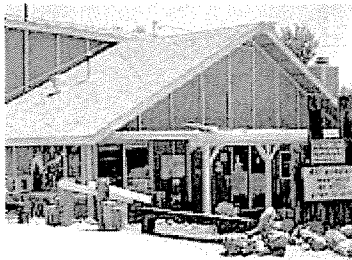
- >> Scenic Driving
- >> Sightseeing
- >> Wildlife View'g
- >> Propane
- >> Repair Srvc

[.... More](#)

Welcome to Big River R.V. Park

[RESERVE ONLINE NOW™](#)

Just 6 miles west of Parker, Arizona on the California side, Big River R.V. Park is situated along the Colorado River with access to 40 miles of river for water skiing, boating, and fishing. This family park is in a quiet rural setting with winter temperatures in the low 70's. The summers are active with water sports on the river and sun bathing on the beach.


[Click to view larger photo](#)

Once you are at the bottom of Marina Drive, you will instantly see the Colorado River. Off to the right is our office, situated in the clubhouse.

Whether it's Bingo, crafts, or pot luck dinners you'll find that this building is the focal point of all activities.

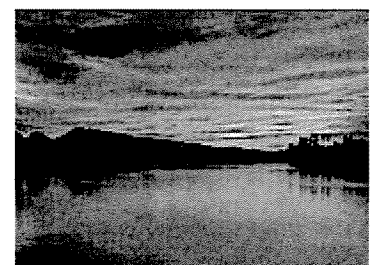
Free WiFi Available



The Colorado River is viewable from all our campsites.

Our beautiful beach accommodates all watercraft mooring. Bring your personal watercraft or a 30 foot powerboat and have a blast on the majestic Colorado River. You're sure to have a great time.

There are many waterfront sites located right at the edge of the Colorado River. YOu won't find a more perfect place to bring the family to enjoy some quality time in your RV. You are sure to have a wonderful time down by the river.


[Click to view larger photo](#)

[Click to view larger photo](#)

Big River RV Park

1 Marina Street
Big River, CA 92242
Phone: (760) 665-9359
Fax: (760) 665-2055

E-Mail: administration@bigriverrvpark.com



[Print this page](#)



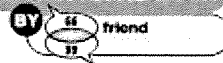
[Mail this page](#)



[Bookmark this page](#)

Web Page Powered By:

reservationfriend.com



[View our Privacy Statements](#)

Copyright © 2007. All rights reserved. Any unauthorized redistribution or reproduction of any material herein is strictly prohibited.

Copyright © 2001 - 2006, Friend Communications, Inc. All rights reserved. Any unauthorized redistribution or reproduction of any material contained herein is strictly prohibited.

Welcome to One of Many Properties on LoopNet

Search 380,000 other commercial properties For Sale and For Lease including Land, Office, Retail, Industrial, Apartments, Hotels and other types of property on LoopNet — the #1 Commercial Real Estate Marketplace Online.

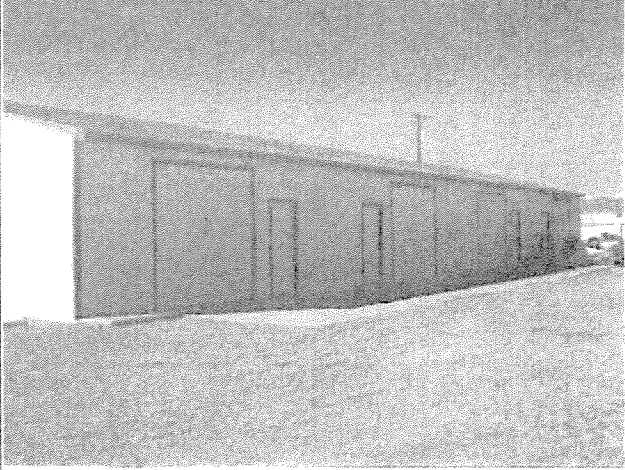
Become a FREE Member

Commercial Income Property PM

7085 Tecumseh
Big River, California 92242
County: San Bernardino

To contact the broker for more details about this listing:

Contact Listing Agent

<p>Photos</p> <p>Image 1 of 1</p>  <p>Click to Enlarge (79 KB)</p>	<p>For Sale Active</p> <p>Property Use Type: Investment</p> <p>Primary Type: Industrial Flex Space</p> <p>Building Size: 4,000 SF</p> <p>Occupancy: 75.00%</p> <p>Price: \$250,000</p> <p>Price/SF: \$62.50</p> <p>Cap Rate: 3.00%</p> <p>Year Built: 1995</p> <p>Property On Ground Lease: Yes</p> <p>Date Last Verified: 1/15/2007</p> <p>Property ID: 14843477</p>	<p>Options</p> <p><input type="checkbox"/> Print</p> <p><input type="checkbox"/> Email</p> <p><input type="checkbox"/> Favorite</p> <p><input type="checkbox"/> Share</p>
---	---	--

Additional Information

Property Description:

Commercial Income Property. 4 - 1,000 s/f units. Each has its own electric meter, own bathroom (sink and toilet only) and cooler. Also included is an Ingersoll-Rand industrial compressor which provides air to all 4 units and 12,000 car lift. Annual rent is \$340. Current Monthly Rents are \$1800.

Location Description:

From CA Highway 62 Take Rio Vista North to Del Rey go left to Tecumseh then go right.

Commission Split:

5%

Additional Types:

Industrial-Business
Manufacturing

Highlights

* Plenty of Parking

* Low Maintenance

Financial Summary	Actual	Major Tenant Information	Debt & Equity Information
Year:	2005	Tenancy Type: Multiple	No Debt & Equity Information
Scheduled Gross Income:	\$21,600		
Effective Gross Income:	\$21,600		
Trash & Water:	\$874		
Taxes:	\$667		
Insurance:	\$1,200		
Land Lease:	\$342		
Net Operating Income:	\$18,517		