

PAINTING AND LIGHTING IN ACCORDANCE
WITH F.A.A. SPECIFICATIONS.

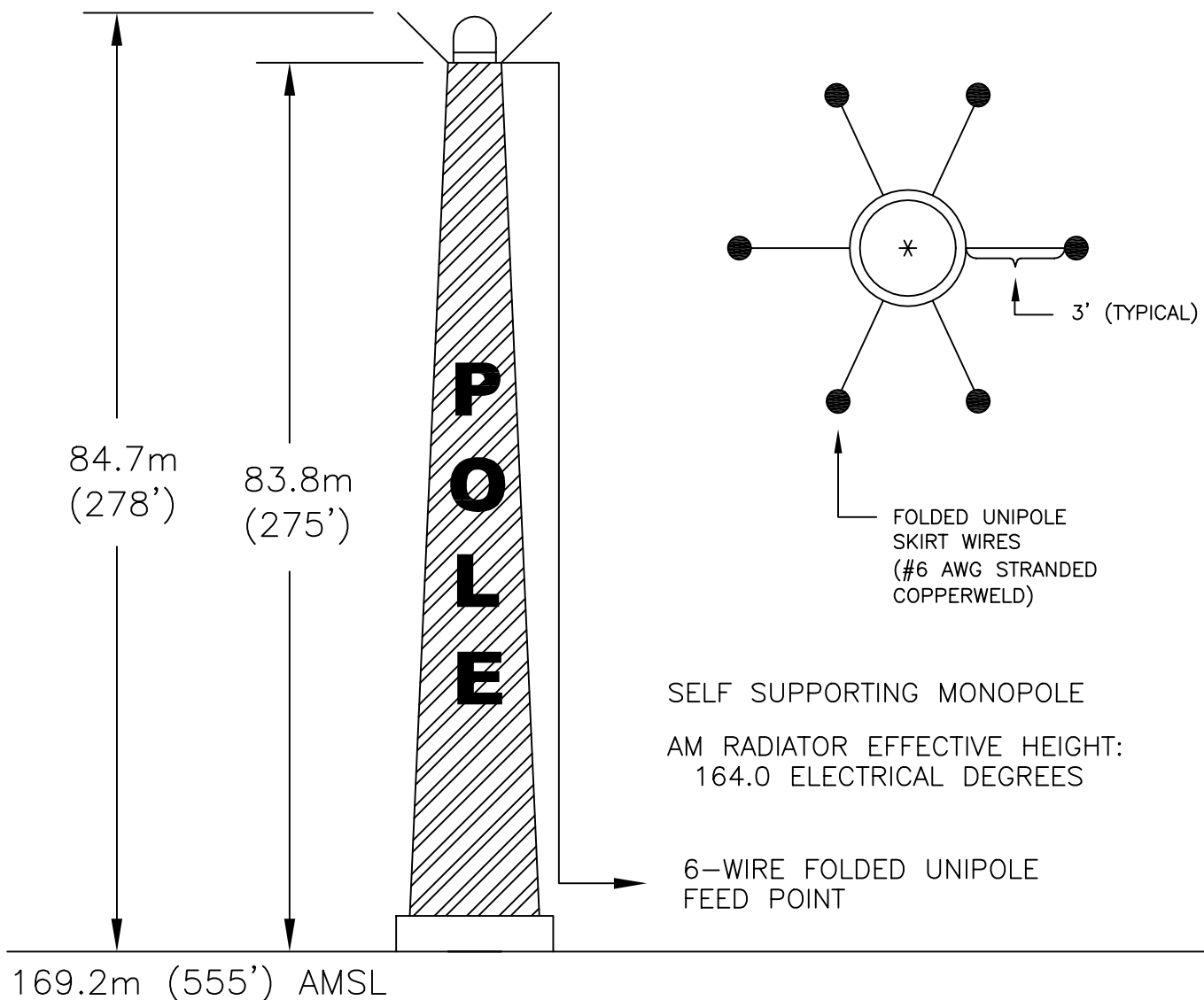
NOT DRAWN TO
SCALE OR SHAPE

N. LAT.: 32° 48' 35.7"
W. LON: 97° 07' 24.5" NAD 1927

N. LAT.: 32° 48' 36.2"
W. LON: 97° 07' 25.5" NAD 1983

HOUSE ANDERSON ROAD SITE
EULESS, TEXAS

253.9m (833') AMSL



**VERTICAL PLAN SKETCH OF
PROPOSED ANTENNA STRUCTURE**

CLASS B AM BROADCAST STATION
KNAX, FORT WORTH, TEXAS
1630 kHz 1.0 KW-N/10 KW-D NDI U

MULLANEY ENGINEERING, INC.
GAITHERSBURG, MARYLAND

FIGURE 3
JANUARY 2003