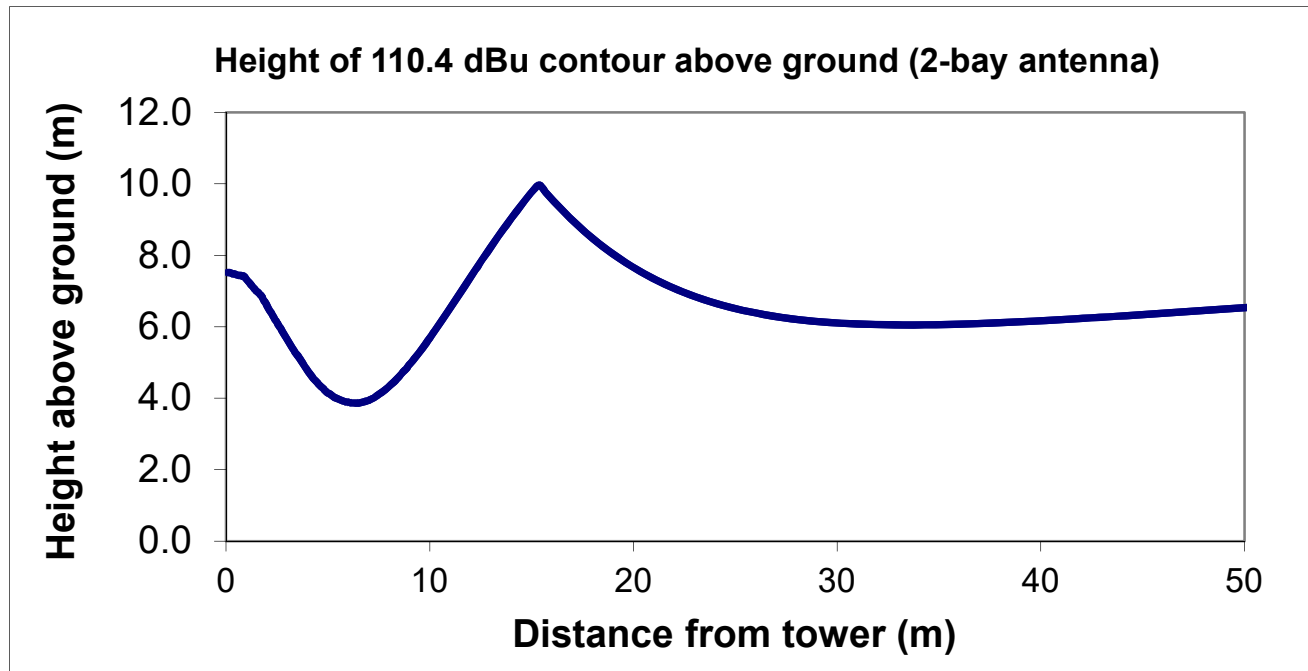


Table 1**W278CG Minor Change to channel 258
Channel Study**

Chan	Class	Call Letters	Type	Status	City	State	Country	Owner	Distance (km)	Bearing TO (deg)	Req. Dist. (km)	Clearance (km)	Field Strength (dBu)	
255	C	WSPA-FM	FM	LIC	SPARTANBURG	SC	US	ENTERCOM LICENSE, LLC	59.9	51.1	89.0	-29.1	72.0	(See Note)
257	C1	WCON-FM	FM	LIC	CORNELIA	GA	US	HABERSHAM BROADCASTI	87.3	247.0	75.8	11.5		
258	D	W258CB	FX	CP	GREENVILLE	SC	US	TOWER ABOVE MEDIA LLC	38.2	72.6	73.4	-35.2		(only received interference)
258	D	W258CB	FX	LIC	GREENVILLE	SC	US	TOWER ABOVE MEDIA LLC	38.2	72.6	37.7	0.5		
260	C	WKSF	FM	LIC	OLD FORT	NC	US	CAPSTAR TX, LLC	65.9	3.7	91.6	-25.7	70.4	(See Note)

NOTE: With respect to WSPA-FM (3rd adjacent) WSPA-FM (LIC) has a field strength of 72.0 dBu F(50,50) at the proposed site, which is greater than the field strength of 2nd adjacent WKSF. Therefore potential interference to WSPA-FM is not the worst case.

NOTE: With respect to WKSF (2nd adjacent) WKSF (LIC) has a field strength of 70.4 dBu F(50,50) at the proposed site and would therefore be susceptible to interference from the proposed facility. Therefore the proposed translator's interfering contour is the 110.4 dBu F(50,10) contour. A two bay NICOM BKG-77 antenna is proposed. The proposed 110.4 dBu F(50,10) contour would extend 21.2 meters horizontally from the tower and would not reach down any closer than 4 meters (13 feet) AGL at any distance from the tower. Therefore, the interfering contour does not contain any structures or population. Therefore this proposal is compliant with the allowance of Rule 74.1204(d). (See Figure 2)



110.4 dBu F(50,10) contour
remains at least 4 meters
above ground level using
a 2-bay antenna.

Proposed 110.4 dBu F(50,10) contour

No population or occupied structures

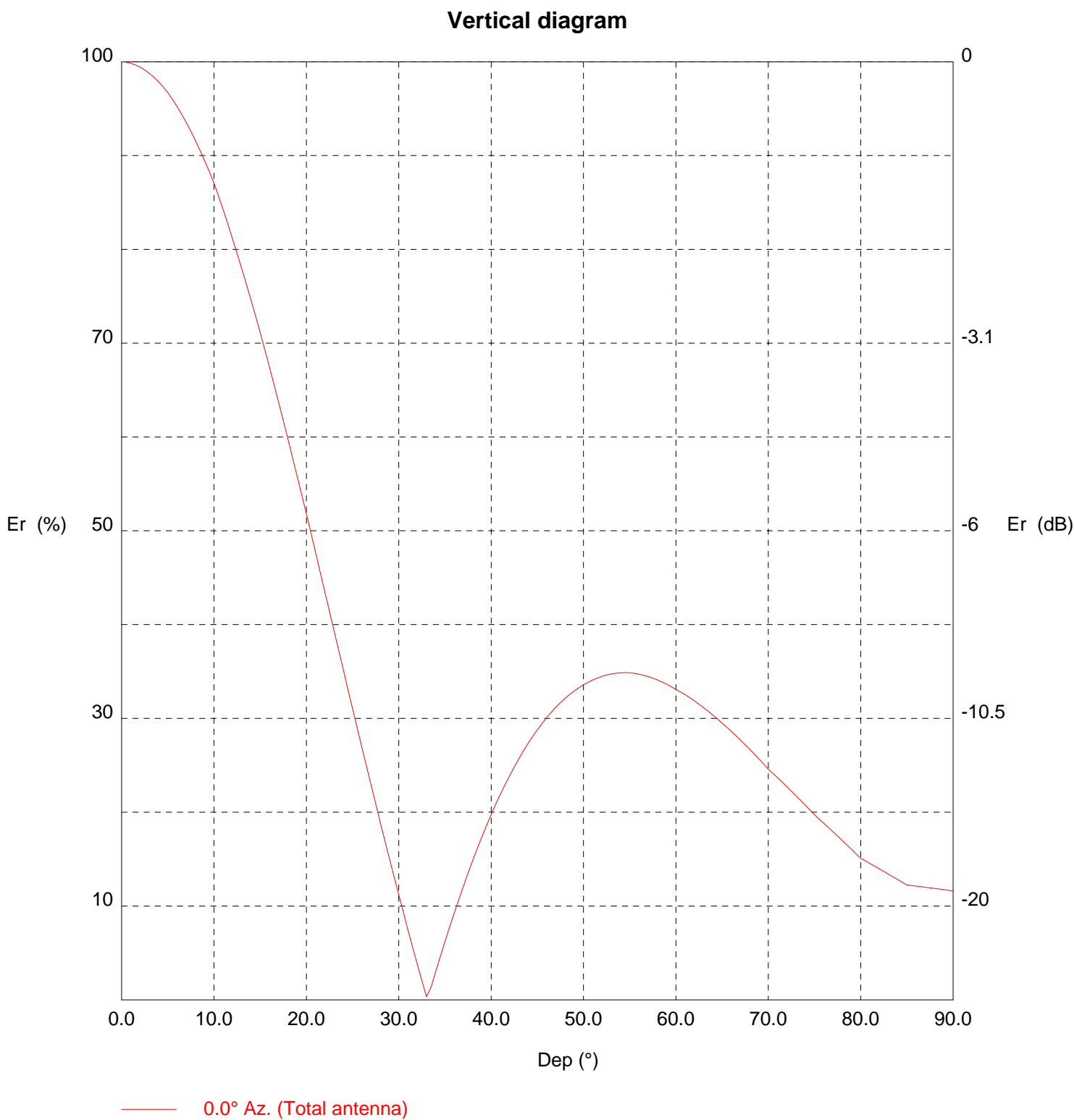
WKSF Field Strength:
70.4 dBu F(50,50)

W278CG , CLEMSON, SC: MINOR CHANGE
2nd adjacent channel interference exhibit with respect to WKSF

Figure 2



Radio Data Services



TX station: BKG77/2 GENERIC

Site name: 3/4 WAVE SEPARATION

Frequency: 98.10 MHz

Vertical diagram at an azimuth of 0° degrees

Dep (°)	Er (%)	ERP (W)	Dep (°)	Er (%)	ERP (W)	Dep (°)	Er (%)	ERP (W)
0.0	100.0	914.2	30.0	11.2	11.5	60.0	33.1	100.1
0.5	100.0	913.3	30.5	9.3	7.9	60.5	32.8	98.4
1.0	99.8	911.3	31.0	7.5	5.1	61.0	32.5	96.7
1.5	99.7	908.1	31.5	5.6	2.9	61.5	32.2	94.8
2.0	99.4	903.9	32.0	3.8	1.3	62.0	31.9	92.8
2.5	99.1	898.4	32.5	2.1	0.4	62.5	31.5	90.8
3.0	98.8	891.9	33.0	0.3	0.0	63.0	31.1	88.7
3.5	98.4	884.3	33.5	1.4	0.2	63.5	30.8	86.5
4.0	97.9	875.7	34.0	3.0	0.8	64.0	30.4	84.2
4.5	97.3	865.9	34.5	4.6	2.0	64.5	29.9	81.9
5.0	96.7	855.2	35.0	6.2	3.5	65.0	29.5	79.5
5.5	96.0	842.7	35.5	7.8	5.5	65.5	29.1	77.2
6.0	95.2	829.2	36.0	9.3	7.9	66.0	28.6	74.8
6.5	94.4	814.9	36.5	10.7	10.5	66.5	28.2	72.5
7.0	93.5	799.7	37.0	12.1	13.5	67.0	27.7	70.0
7.5	92.6	783.6	37.5	13.5	16.7	67.5	27.2	67.6
8.0	91.6	766.9	38.0	14.9	20.2	68.0	26.7	65.1
8.5	90.5	749.4	38.5	16.1	23.8	68.5	26.2	62.7
9.0	89.4	731.2	39.0	17.4	27.7	69.0	25.7	60.2
9.5	88.3	712.5	39.5	18.6	31.6	69.5	25.1	57.8
10.0	87.1	693.1	40.0	19.8	35.7	70.0	24.6	55.3
10.5	85.7	670.8	40.5	20.9	39.8	70.5	24.1	53.3
11.0	84.2	648.2	41.0	21.9	43.9	71.0	23.7	51.2
11.5	82.7	625.3	41.5	22.9	48.1	71.5	23.2	49.2
12.0	81.2	602.3	42.0	23.9	52.2	72.0	22.7	47.2
12.5	79.6	579.0	42.5	24.8	56.4	72.5	22.2	45.2
13.0	78.0	555.7	43.0	25.7	60.4	73.0	21.7	43.2
13.5	76.3	532.4	43.5	26.5	64.4	73.5	21.2	41.3
14.0	74.6	509.1	44.0	27.3	68.3	74.0	20.7	39.3
14.5	72.9	485.8	44.5	28.1	72.1	74.5	20.2	37.4
15.0	71.1	462.7	45.0	28.8	75.8	75.0	19.7	35.5
15.5	69.3	439.1	45.5	29.5	79.3	75.5	19.3	33.9
16.0	67.4	415.8	46.0	30.1	82.7	76.0	18.8	32.4
16.5	65.6	392.9	46.5	30.7	85.9	76.5	18.4	30.8
17.0	63.6	370.3	47.0	31.2	88.9	77.0	17.9	29.3
17.5	61.7	348.1	47.5	31.7	91.8	77.5	17.4	27.8
18.0	59.8	326.5	48.0	32.1	94.4	78.0	17.0	26.4
18.5	57.8	305.3	48.5	32.6	96.9	78.5	16.5	24.9
19.0	55.8	284.7	49.0	32.9	99.2	79.0	16.0	23.5
19.5	53.8	264.7	49.5	33.3	101.2	79.5	15.6	22.1
20.0	51.8	245.3	50.0	33.6	103.1	80.0	15.1	20.8
20.5	49.7	226.1	50.5	33.9	104.8	80.5	14.8	20.0
21.0	47.6	207.5	51.0	34.1	106.3	81.0	14.5	19.3
21.5	45.6	189.8	51.5	34.3	107.6	81.5	14.3	18.6
22.0	43.5	172.8	52.0	34.5	108.7	82.0	14.0	17.8
22.5	41.4	156.7	52.5	34.6	109.6	82.5	13.7	17.1
23.0	39.3	141.3	53.0	34.7	110.3	83.0	13.4	16.4
23.5	37.2	126.8	53.5	34.8	110.8	83.5	13.1	15.7
24.0	35.2	113.0	54.0	34.9	111.1	84.0	12.8	15.0
24.5	33.1	100.1	54.5	34.9	111.2	84.5	12.5	14.4
25.0	31.0	88.1	55.0	34.9	111.1	85.0	12.2	13.7
25.5	29.0	76.8	55.5	34.8	110.7	85.5	12.2	13.6
26.0	26.9	66.3	56.0	34.7	110.2	86.0	12.1	13.4
26.5	24.9	56.7	56.5	34.6	109.4	86.5	12.1	13.3
27.0	22.9	47.9	57.0	34.5	108.5	87.0	12.0	13.2
27.5	20.9	39.9	57.5	34.3	107.5	87.5	11.9	13.0
28.0	18.9	32.7	58.0	34.1	106.3	88.0	11.9	12.9
28.5	17.0	26.3	58.5	33.9	104.9	88.5	11.8	12.8
29.0	15.0	20.6	59.0	33.6	103.5	89.0	11.7	12.6
29.5	13.1	15.7	59.5	33.4	101.8	89.5	11.7	12.5