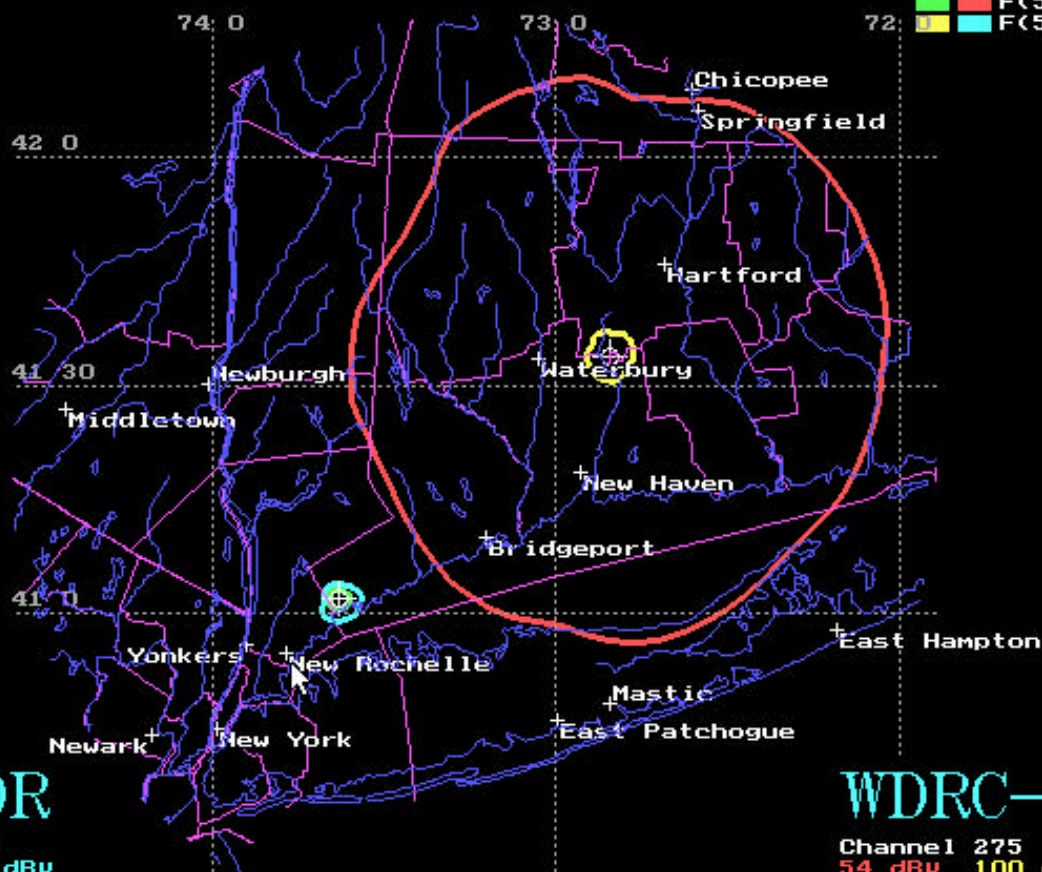


ESC=Exit
 0=Other
 N=CtyNam
 5=County
 6=Roads
 7=Rails
 8=Water
 C=Cities
 S=Shadow
 T=Thick
 H=Hide

F(50,50)
 F(50,10)



XLATOR

Channel 276
 60 dBμ 48 dBμ
 0.001 kW
 Meters AMSL: 84
 41-02-01 73-37-50
 Kilometer Scale

WDRC-FM

Channel 275
 54 dBμ 100 dBμ
 19.500 kW
 Meters AMSL: 345
 41-33-44 72-50-40

0 20 40 60 80 100 120 140 160 180 200

Map Scale
 1:1500000