

**MULTIPLE OWNERSHIP  
COMPLIANCE STUDY  
All Georgia  
August 2003**

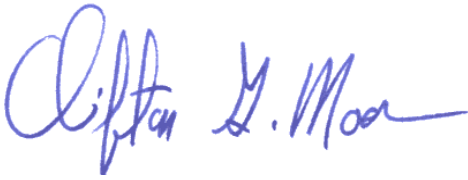
This Multiple Ownership Compliance Study was conducted to determine if Staton Broadcasting could acquire WHKN (FM), Millen, GA, WPMX (FM), Statesboro, GA, WQXZ (FM), Cordele, GA and WQSY (FM), Hawkinsville, GA and still be in compliance with §73.3555 of the Commission's Rules. These stations presently have common ownership, therefore, it is anticipated that Staton Broadcasting could own and operate the same stations. These stations form two distinct markets and are shown in Exhibit #1.

The city grade contours of WHKN (FM) and WPMX (FM) comprise the Subject Area of Market #1 and are shown in Exhibit #2. WQSY (FM) and WQXZ (FM) comprise the Subject Area in Market #2 and are shown in Exhibit #6. The city grade contours of the stations providing service to the Subject Area in Market #1 are shown in Exhibits #3 and 4. Exhibit #5 is a tabulation of all services to Market #1. The city grade contours of the stations providing service to Market #2 are shown in Exhibits #7 and 8. Exhibit #9 is a tabulation of all services to the Subject Area in Market #2.

In Market #1, The AM and FM contour maps combined show 22 services, including the 2 Subject Stations (2 FM and no AM). In Market #2, the AM and FM contour maps combined show 17 services, including the 2 Subject stations (2 FM and no AM). The Commission's multiple ownership rule in §73.3555 (a) (1) (iii) states that:

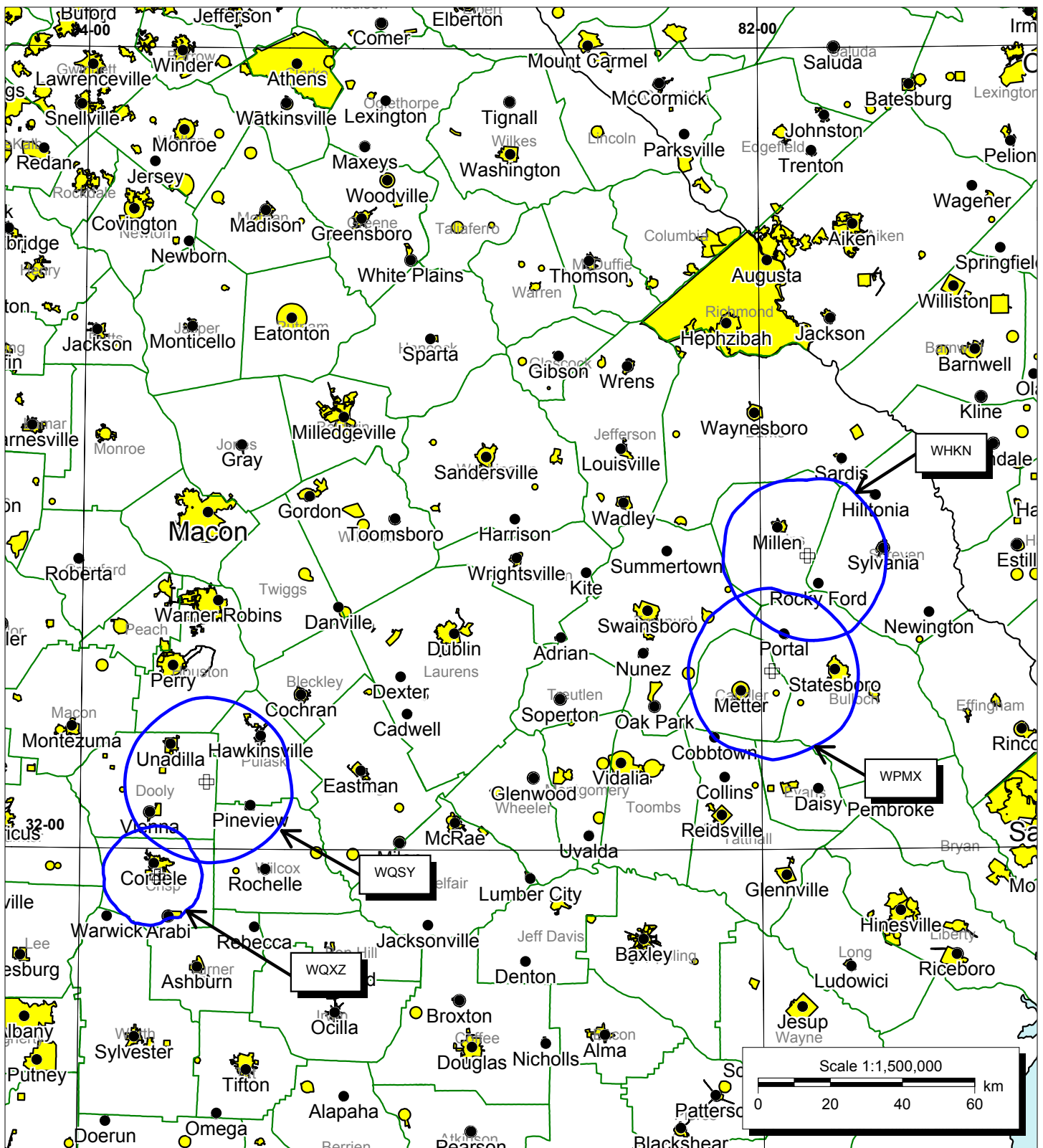
*"In a radio market with between 15 and 29 (inclusive) commercial radio stations, a party may own, operate, or control up to 6 commercial radio stations, not more than 4 of which are in the same service (AM or FM);".*

Based on these findings, it is believed that the ownership of the three Subject Stations is in compliance with §73.3555 of the Commission's Rules. All statements contained herein are thought to be accurate and correct to the knowledge of the undersigned.



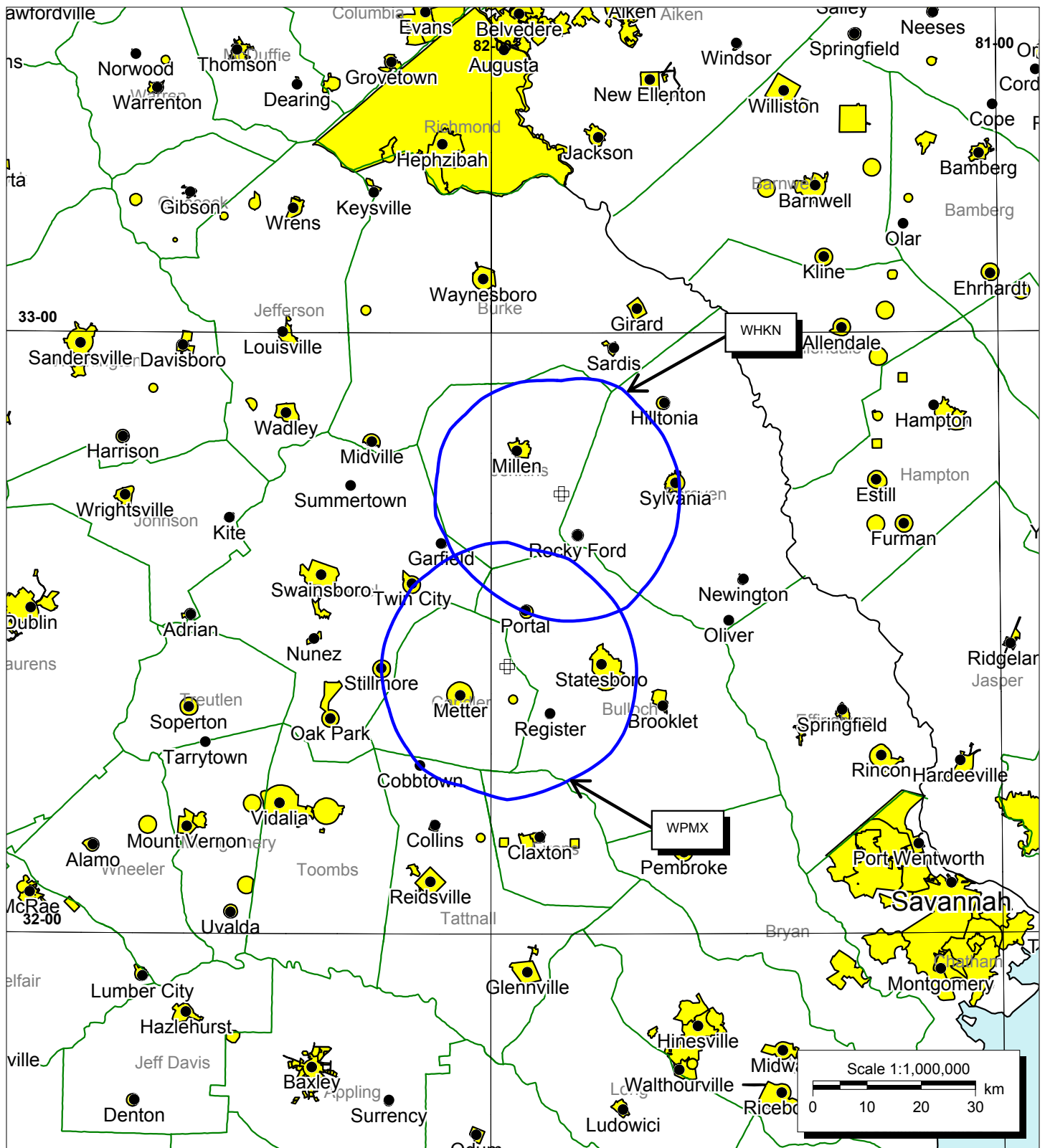
\_\_\_\_ August 13, 2003

Clifton G. Moor  
Bromo Communications, Inc.



**EXHIBIT #1**  
**Co-Owned Stations**  
**MULTIPLE OWNERSHIP**  
**COMPLIANCE STUDY**  
**All Georgia**

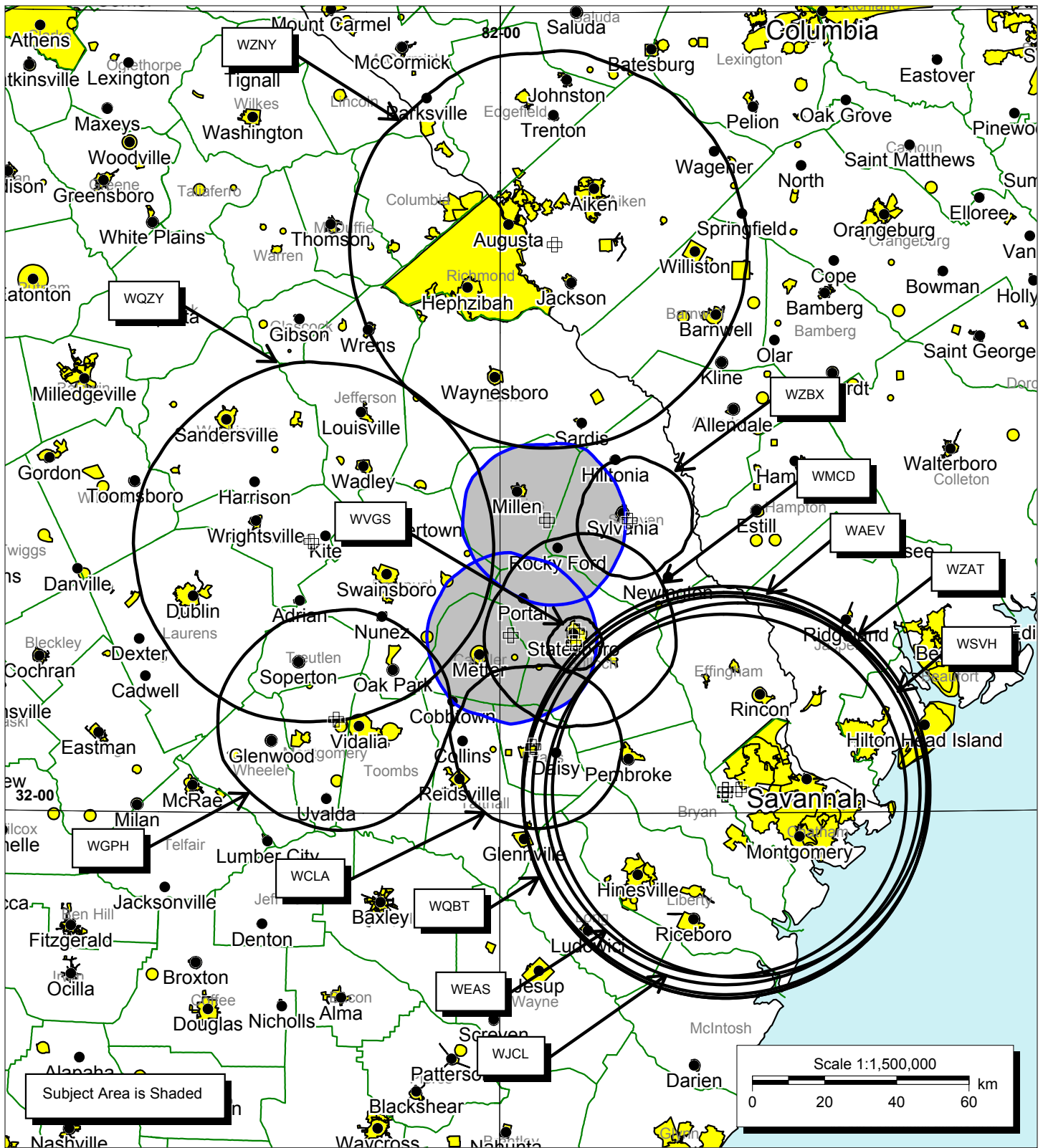
**Bromo Communications, Inc.**  
 Atlanta, Georgia  
 August 2003



## EXHIBIT #2

### Subject Stations - Market #1 MULTIPLE OWNERSHIP COMPLIANCE STUDY All Georgia

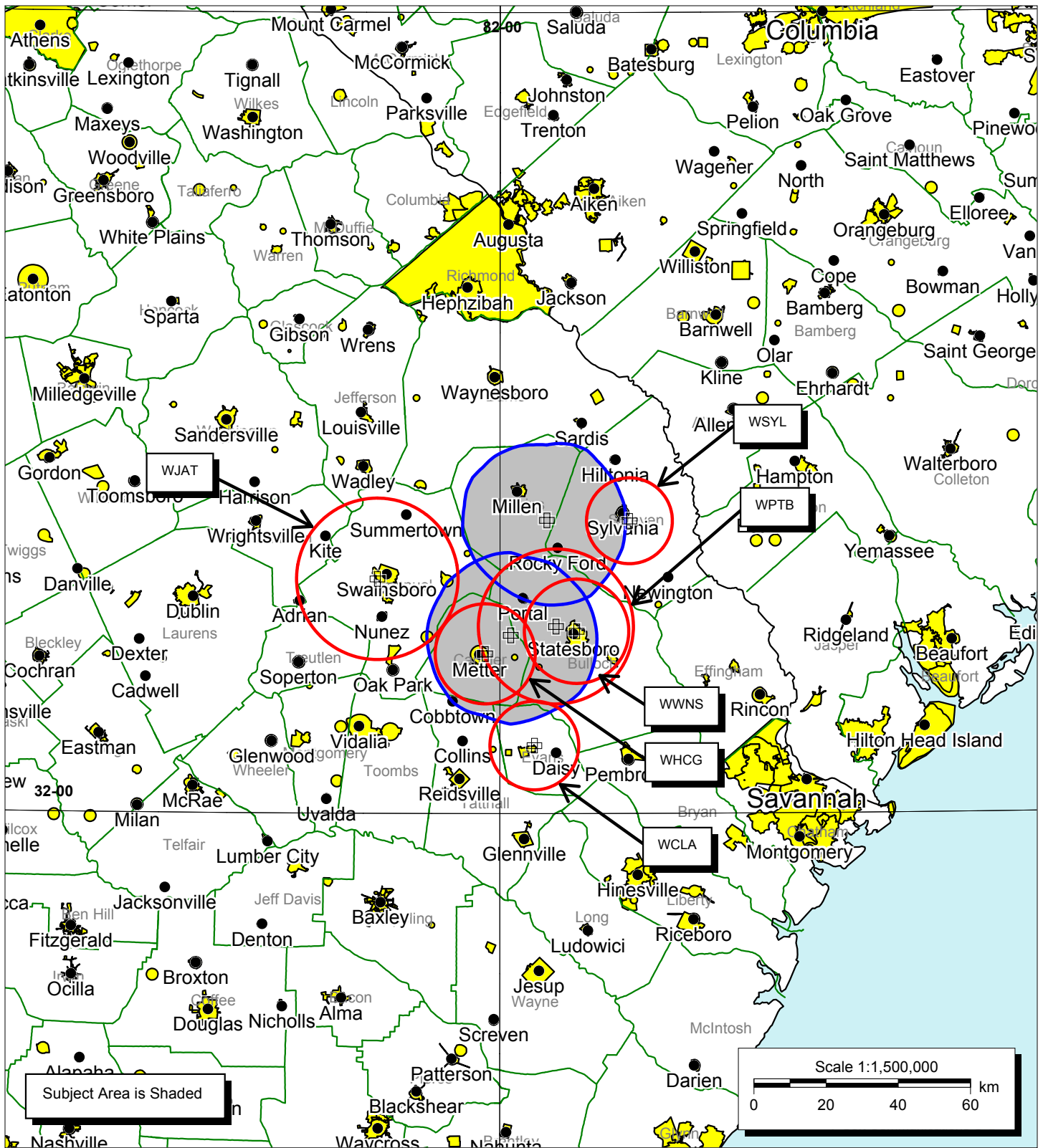
**Bromo Communications, Inc.**  
Atlanta, Georgia  
August 2003



**EXHIBIT #3**  
**FM Services to Subject Area - Market #1**  
**MULTIPLE OWNERSHIP**  
**COMPLIANCE STUDY**  
**All Georgia**

**Bromo Communications, Inc.**  
 Atlanta, Georgia  
 August 2003





**EXHIBIT #4**  
**AM Services to Subject Area - Market #1**  
**MULTIPLE OWNERSHIP**  
**COMPLIANCE STUDY**  
**All Georgia**

**Bromo Communications, Inc.**  
 Atlanta, Georgia  
 August 2003

**EXHIBIT #5**  
**MULTIPLE OWNERSHIP**  
**COMPLIANCE STUDY**  
**All Georgia**  
August 2003

**Tabulation of Services to Subject Area**

**Market #1**

**Subject Stations**

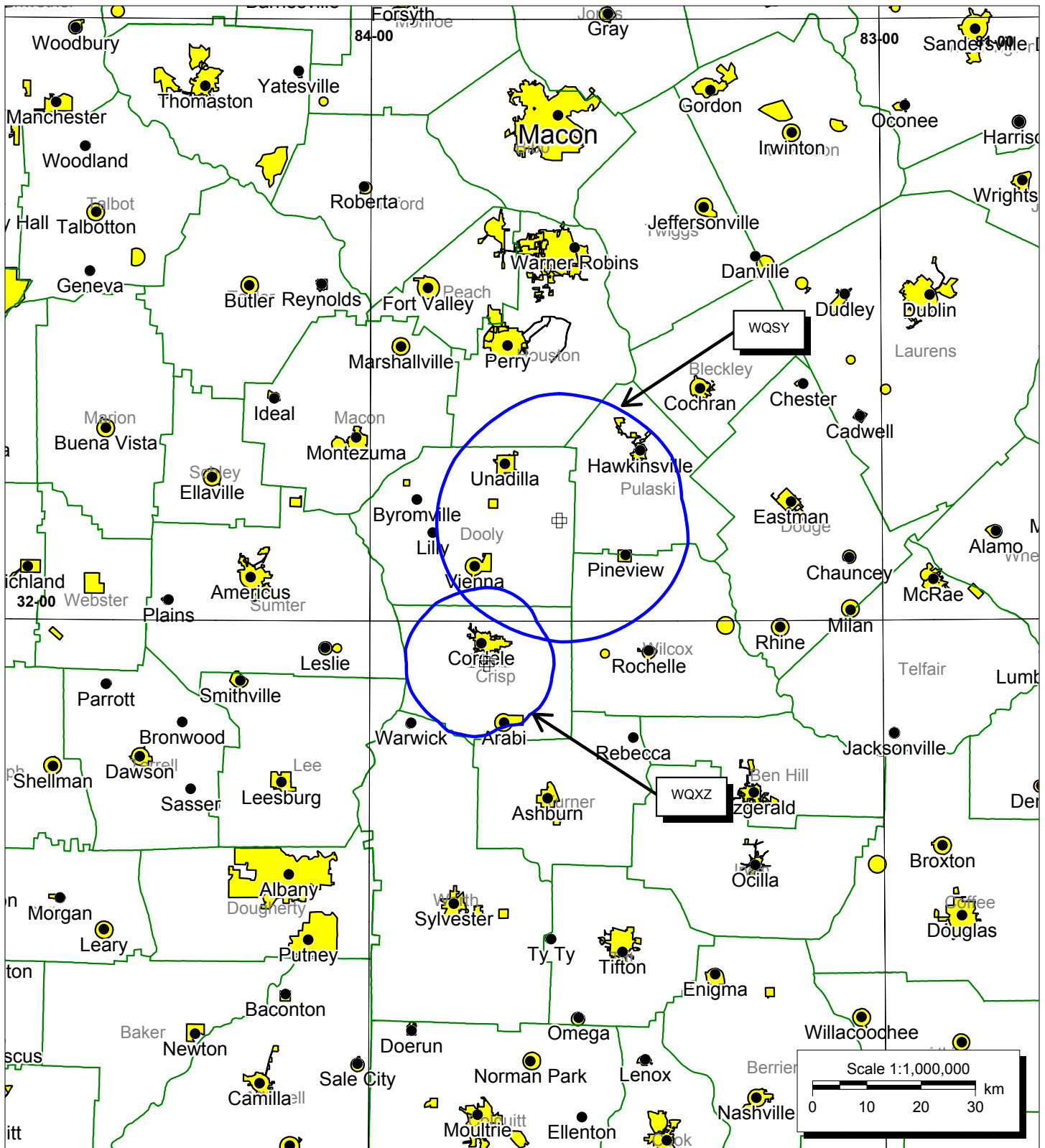
<u>Call</u>	<u>Ch/Freq</u>	<u>Latitude</u>	<u>Longitude</u>	<u>Power (kW)</u>	<u>City</u>	<u>State</u>
WHKN	235C	32° 43' 57"	81° 51' 43"	14.5	Millen	GA
WPMX	275C	32° 26' 43"	81° 58' 07"	25	Statesboro	GA

**FM Services to Subject Area**

<u>Call</u>	<u>Ch/Freq</u>	<u>Latitude</u>	<u>Longitude</u>	<u>Power (kW)</u>	<u>City</u>	<u>State</u>
WAEV	247C	32° 02' 45"	81° 20' 27"	100	Savannah	GA
WBMZ	285A	32° 23' 56"	82° 02' 36"	3	Metter	GA
WCLA	297C	32° 10' 01"	81° 54' 07"	25	Claxton	GA
WEAS	226C	32° 02' 48"	81° 20' 27"	100	Savannah	GA
WGPH	218C	32° 14' 02"	82° 28' 52"	40	Vidalia	GA
WJCL	243C	32° 03' 30"	81° 20' 20"	100	Savannah	GA
WMCD	261C	32° 27' 19"	81° 46' 28"	50	Statesboro	GA
WQBT	231C	32° 02' 45"	81° 20' 27"	100	Savannah	GA
WQZY	240C	32° 40' 42"	82° 33' 26"	88	Dublin	GA
WSVH	216C	32° 03' 32"	81° 17' 57"	100	Savannah	GA
WVGS	220A	32° 25' 32"	81° 46' 58"	1	Statesboro	GA
WZAT	271C	32° 03' 30"	81° 20' 20"	100	Savannah	GA
WZBX	293A	32° 43' 53"	81° 37' 03"	6	Sylvania	GA
WZNY	289C	33° 25' 15"	81° 50' 19"	100	Augusta	GA

**AM Services to Subject Area**

<u>Call</u>	<u>Ch/Freq</u>	<u>Latitude</u>	<u>Longitude</u>	<u>Power (kW)</u>	<u>City</u>	<u>State</u>
WCLA	1470	32° 10' 12"	81° 53' 56"	1	Claxton	GA
WHCG	1360	32° 23' 56"	82° 02' 36"	1	Metter	GA
WJAT	800	32° 35' 08"	82° 21' 42"	1	Swainsboro	GA
WPTB	850	32° 28' 02"	81° 50' 07"	1	Statesboro	GA
WSYL	1490	32° 43' 51"	81° 37' 04"	1	Sylvania	GA
WWNS	1240	32° 27' 19"	81° 46' 28"	0.71	Statesboro	GA

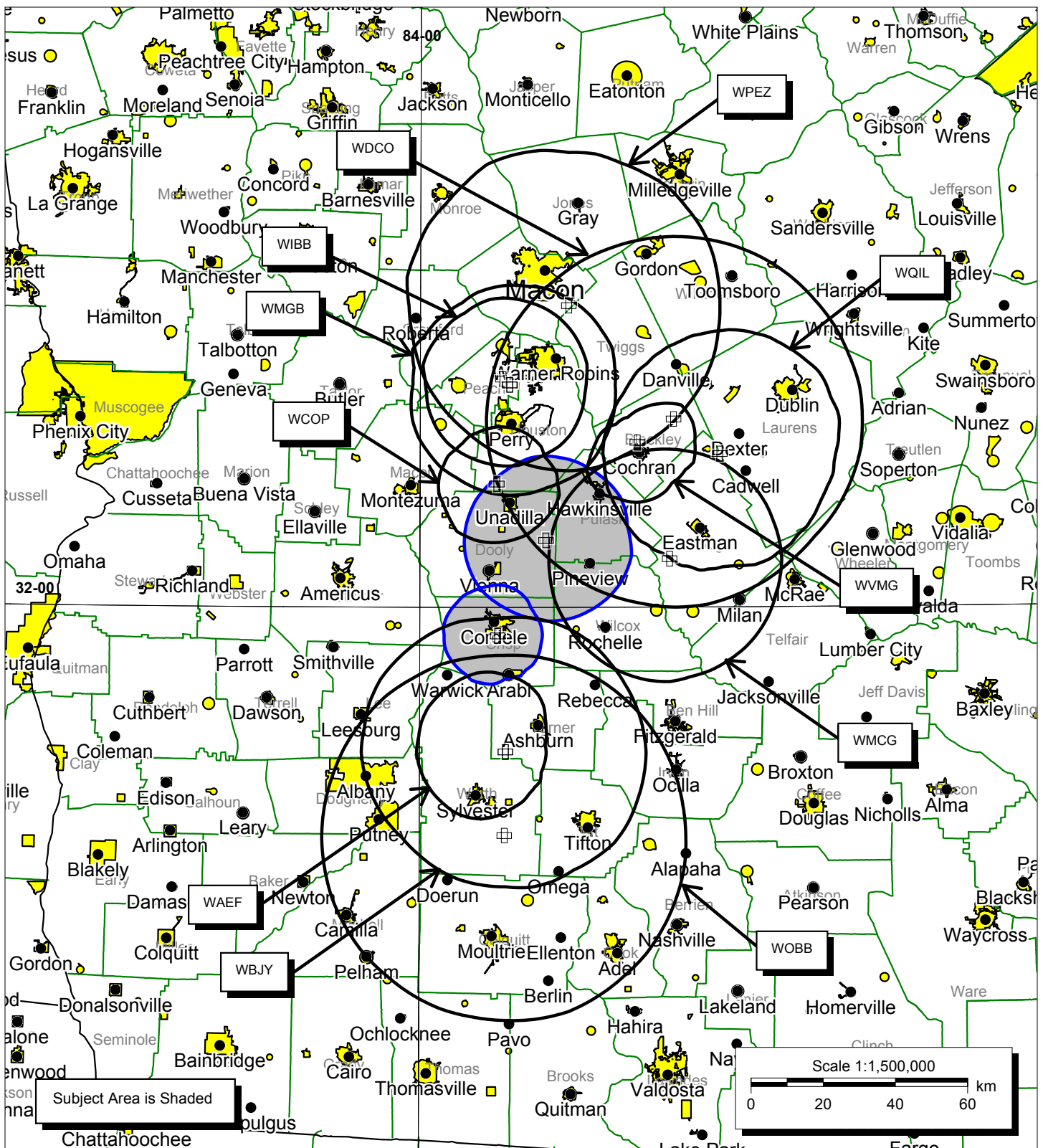


## EXHIBIT #6

### Subject Stations - Market #2 MULTIPLE OWNERSHIP COMPLIANCE STUDY All Georgia

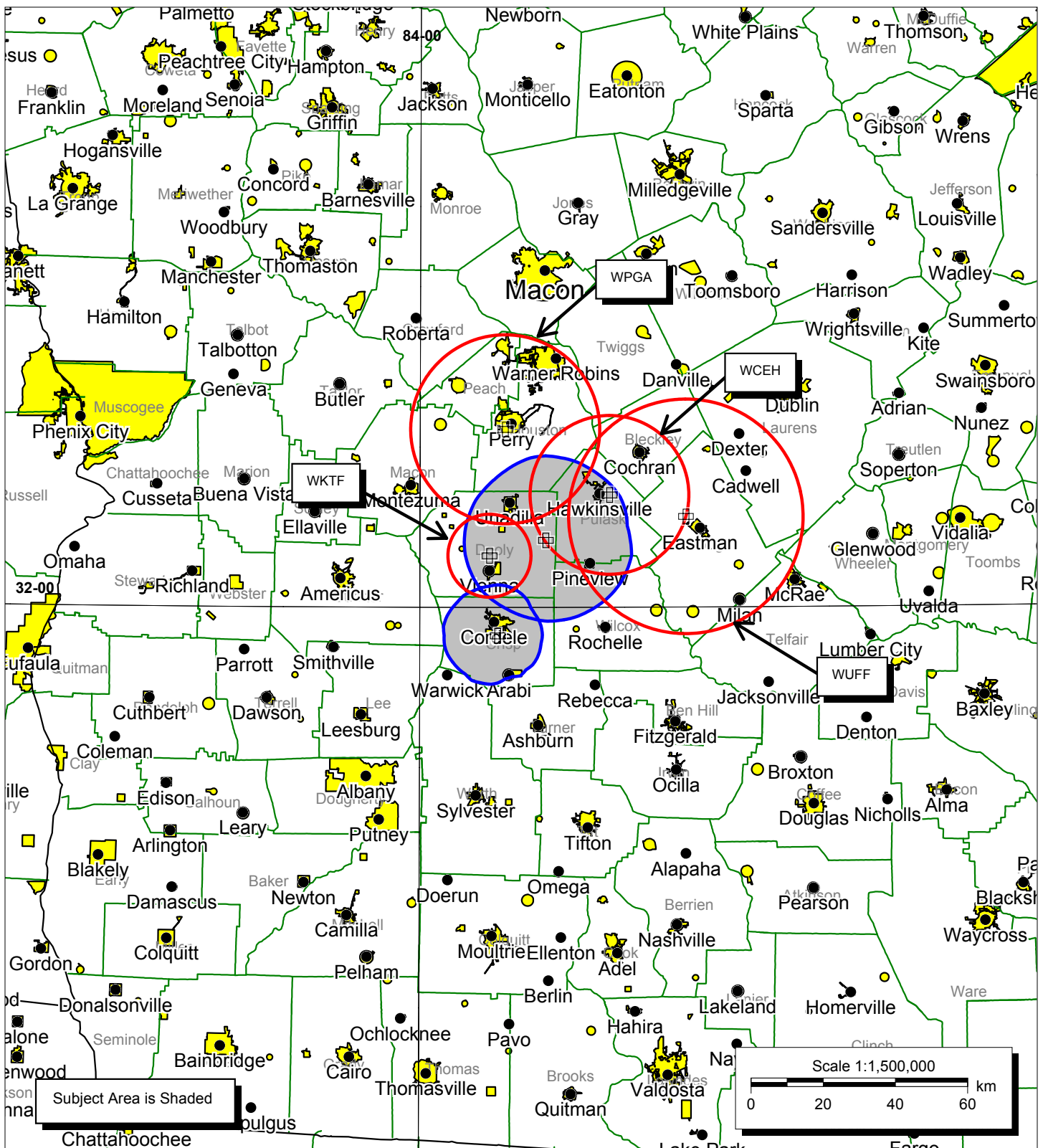
**Bromo Communications, Inc.**  
Atlanta, Georgia  
August 2003





**EXHIBIT #7**  
**FM Services to Subject Area - Market #2**  
**MULTIPLE OWNERSHIP**  
**COMPLIANCE STUDY**  
**All Georgia**

**Bromo Communications, Inc.**  
 Atlanta, Georgia  
 August 2003



**EXHIBIT #8**  
**AM Services to Subject Area - Market #2**  
**MULTIPLE OWNERSHIP**  
**COMPLIANCE STUDY**  
**All Georgia**

**Bromo Communications, Inc.**  
 Atlanta, Georgia  
 August 2003

**EXHIBIT #9**  
**MULTIPLE OWNERSHIP**  
**COMPLIANCE STUDY**  
**All Georgia**  
August 2003

**Tabulation of Services to Subject Area**

**Market #2**

**Subject Stations**

<u>Call</u>	<u>Ch/Freq</u>	<u>Latitude</u>	<u>Longitude</u>	<u>Power (kW)</u>	<u>City</u>	<u>State</u>
WQSY	280C	32° 10' 03"	83° 37' 51"	10.5	Hawkinsville	GA
WQXZ	252A	31° 55' 45"	83° 46' 20"	4.2	Cordele	GA

**FM Services to Subject Area**

<u>Call</u>	<u>Ch/Freq</u>	<u>Latitude</u>	<u>Longitude</u>	<u>Power (kW)</u>	<u>City</u>	<u>State</u>
WAEF	212C	31° 38' 22"	83° 44' 58"	11	Cordele	GA
WBJY	207C	31° 38' 22"	83° 44' 58"	65	Americus	GA
WCOP	260A	32° 18' 29"	83° 46' 30"	6	Unadilla	GA
WDCO	209C	32° 28' 11"	83° 15' 17"	100	Cochran	GA
WIBB	250C	32° 34' 12"	83° 45' 26"	10.5	Fort Valley	GA
WMCG	285C	32° 07' 16"	83° 16' 05"	36	Milan	GA
WMGB	236C	32° 33' 20"	83° 44' 14"	46	Montezuma	GA
WOBB	262C	31° 25' 51"	83° 45' 10"	100	Tifton	GA
WPEZ	229C	32° 45' 12"	83° 33' 46"	100	Jeffersonville	GA
WQIL	267C	32° 22' 59"	83° 07' 08"	50	Chauncey	GA
WVMG	244A	32° 24' 43"	83° 21' 42"	6	Cochran	GA

**AM Services to Subject Area**

<u>Call</u>	<u>Ch/Freq</u>	<u>Latitude</u>	<u>Longitude</u>	<u>Power (kW)</u>	<u>City</u>	<u>State</u>
WCEH	610	32° 16' 50"	83° 26' 37"	0.5	Hawkinsville	GA
WKTF	1550	32° 07' 44"	83° 47' 46"	1	Vienna	GA
WPGA	980	32° 26' 40"	83° 45' 00"	5	Perry	GA
WUFF	710	32° 13' 35"	83° 13' 10"	2.5	Eastman	GA