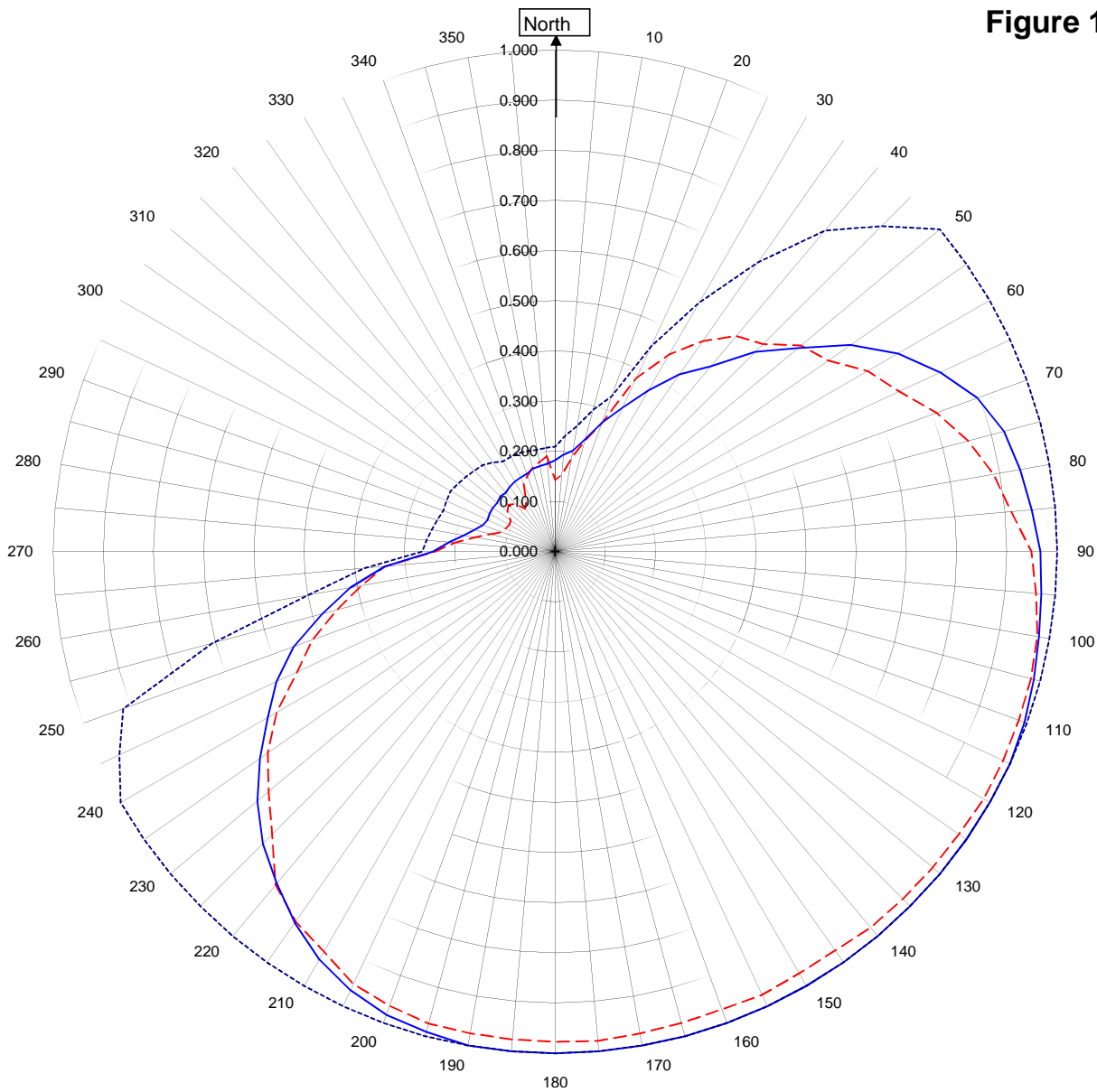


Shively Labs

Shively Labs, a division of Howell Laboratories, Inc. Bridgton, ME (207)647-3327

Figure 1A



W260CG ASHEBORO, NC.
32191
November 24, 2014

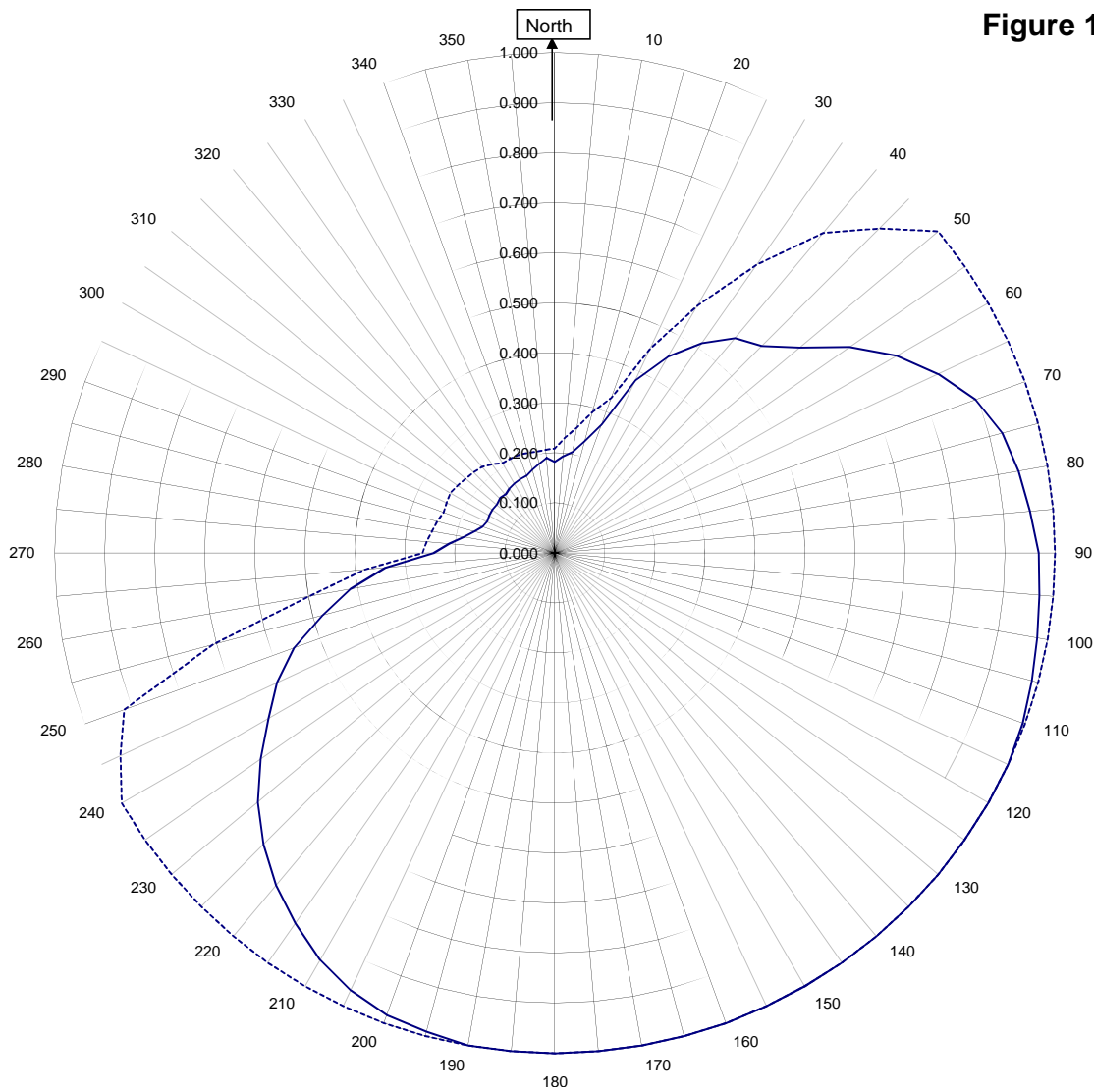
Horizontal RMS	0.717	Frequency	99.9 / 449.55 mHz
Vertical RMS	0.699	Plot	Relative Field
H/V Composite RMS	0.720	Scale	4.5 : 1
FCC Composite RMS	0.796	See Figure 2 for Mechanical Details	

Antenna Model	6810-1-DA
Pattern Type	Directional Azimuth

Shively Labs

Shively Labs, a division of Howell Laboratories, Inc. Bridgton, ME (207)647-3327

Figure 1B



W260CG ASHEBORO, NC.

32191
November 24, 2014

—————H/V Composite RMS	0.720
.....FCC Composite RMS	0.796

Frequency	99.9 / 449.55 mHz
Plot	Relative Field
Scale	4.5 : 1
See Figure 2 for Mechanical Details	

Antenna Model	6810-1-DA
Pattern Type	Directional H/V Composite

Figure 1C

Tabulation of Horizontal Azimuth Pattern
W260CG ASHEBORO, NC.

Azimuth	Rel Field	Azimuth	Rel Field
0	0.182	180	1.000
10	0.205	190	1.000
20	0.274	200	0.983
30	0.371	210	0.939
40	0.482	220	0.863
45	0.563	225	0.824
50	0.631	230	0.775
60	0.789	240	0.661
70	0.895	250	0.555
80	0.941	260	0.415
90	0.967	270	0.243
100	0.979	280	0.185
110	0.995	290	0.154
120	1.000	300	0.151
130	1.000	310	0.151
135	1.000	315	0.155
140	1.000	320	0.153
150	1.000	330	0.161
160	1.000	340	0.165
170	1.000	350	0.173

Figure 1D

Tabulation of Vertical Azimuth Pattern
W260CG ASHEBORO, NC.

Azimuth	Rel Field	Azimuth	Rel Field
0	0.143	180	0.977
10	0.191	190	0.975
20	0.273	200	0.964
30	0.454	210	0.921
40	0.561	220	0.867
45	0.585	225	0.798
50	0.639	230	0.745
60	0.719	240	0.641
70	0.809	250	0.515
80	0.887	260	0.392
90	0.949	270	0.239
100	0.975	280	0.163
110	0.983	290	0.113
120	0.986	300	0.106
130	0.981	310	0.124
135	0.979	315	0.132
140	0.978	320	0.124
150	0.971	330	0.115
160	0.971	340	0.161
170	0.975	350	0.181

Figure 1E

Tabulation of Composite Azimuth Pattern
W260CG ASHEBORO, NC.

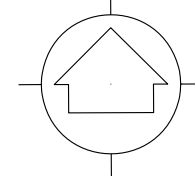
Azimuth	Rel Field	Azimuth	Rel Field
0	0.182	180	1.000
10	0.205	190	1.000
20	0.274	200	0.983
30	0.454	210	0.939
40	0.561	220	0.867
45	0.585	225	0.824
50	0.639	230	0.775
60	0.789	240	0.661
70	0.895	250	0.555
80	0.941	260	0.415
90	0.967	270	0.243
100	0.979	280	0.185
110	0.995	290	0.154
120	1.000	300	0.151
130	1.000	310	0.151
135	1.000	315	0.155
140	1.000	320	0.153
150	1.000	330	0.161
160	1.000	340	0.165
170	1.000	350	0.181

Figure 1F

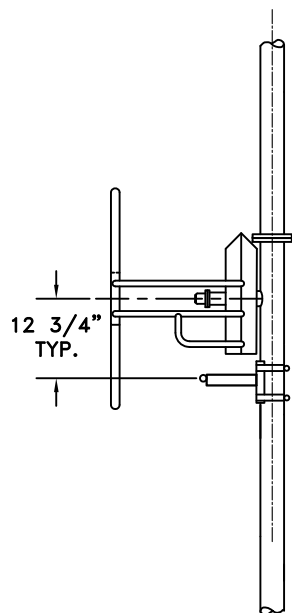
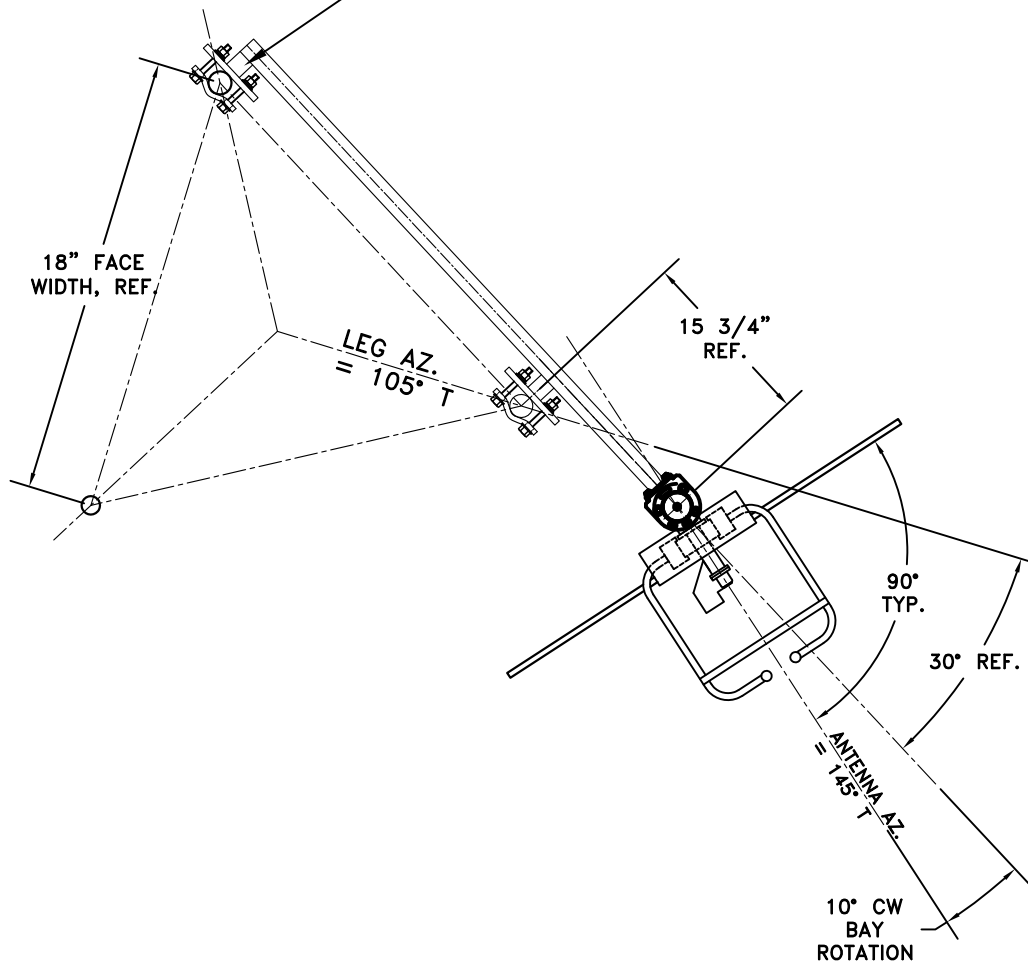
Tabulation of FCC Directional Composite
W260CG ASHEBORO, NC.

Azimuth	Rel Field	Azimuth	Rel Field
0	0.209	180	1.000
10	0.255	190	1.000
20	0.330	200	1.000
30	0.572	210	1.000
40	0.835	220	1.000
50	1.000	230	1.000
60	1.000	240	1.000
70	1.000	250	0.916
80	1.000	260	0.500
90	1.000	270	0.265
100	1.000	280	0.250
110	1.000	290	0.237
120	1.000	300	0.241
130	1.000	310	0.232
140	1.000	320	0.225
150	1.000	330	0.208
160	1.000	340	0.209
170	1.000	350	0.206

TRUE NORTH



MOUNTS TO FIT:
2 3/8" OD TOWER LEG, REF.



SIDE VIEW

ANTENNA HEADING 145° TRUE NORTH

SHIVELY LABS			
A DIVISION OF HOWELL LABORATORIES INC., BRIDGTON, MAINE			
SHOP ORDER:	FREQUENCY:	SCALE:	DRAWN BY:
32191	99.9	N.T.S.	ASP
			APPROVED BY:
			DAB
TITLE:			
MODEL-6810-1-DIRECTIONAL ANTENNA			
DATE:			
11-26-14		FIGURE 2	

Antenna Mfg.: Shively Labs

Antenna Type: 6810-1-DA

Station: W260CG

Frequency: 99.9

Channel #: 260

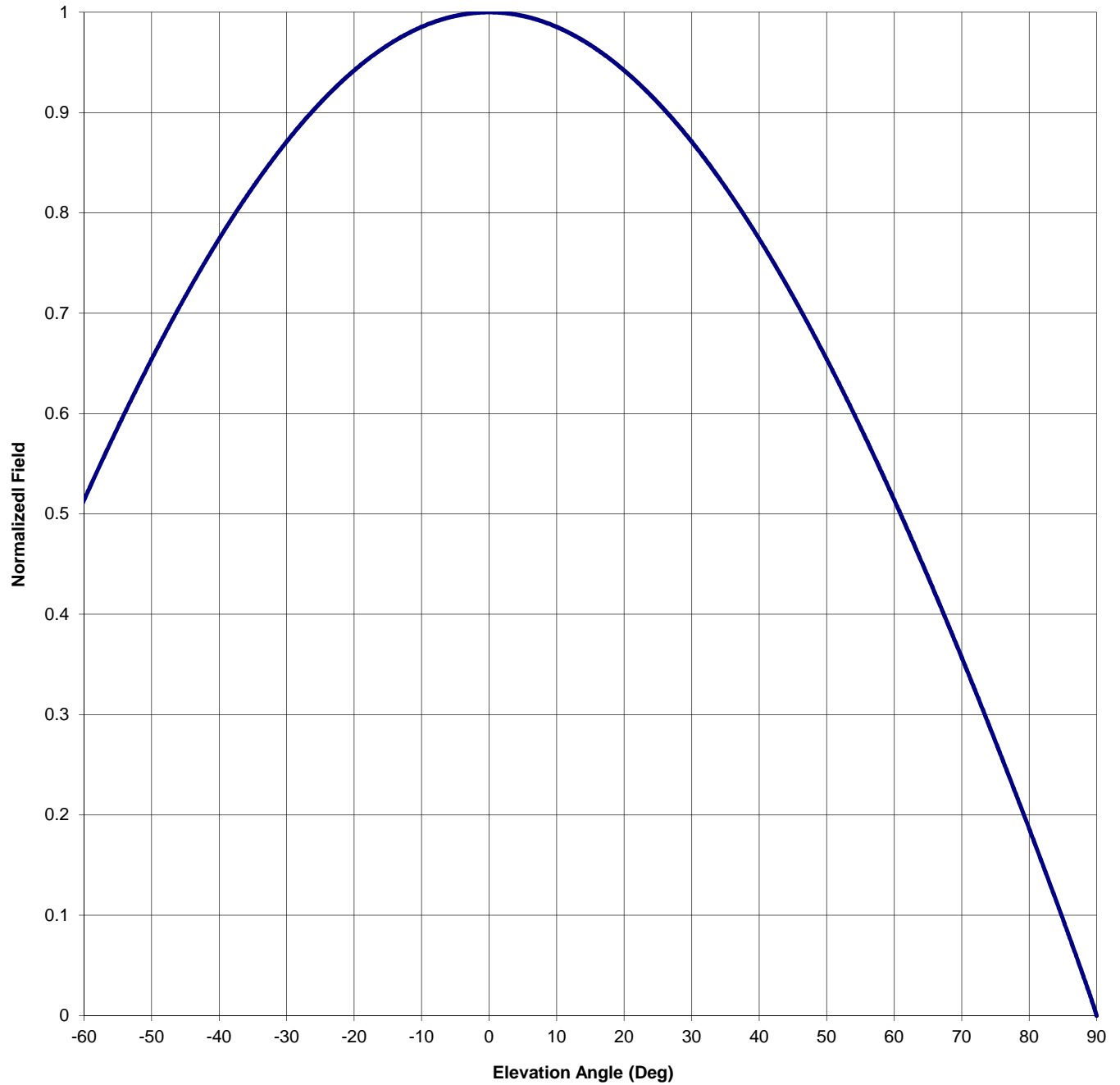
Figure: Figure 3

Date: 11/24/2014

Beam Tilt 0

Gain (Max) 0.918 -0.370 dB

Gain (Horizon) 0.918 -0.370 dB



Antenna Mfg.: Shively Labs

Date: 11/24/2014

Antenna Type: 6810-1-DA

Station: W260CG

Beam Tilt 0

Frequency: 99.9

Gain (Max) 0.918

-0.370 dB

Channel #: 260

Gain (Horizon) 0.918

-0.370 dB

Figure: Figure 3

Angle of Depression (Deg)	Relative Field	Angle of Depression (Deg)	Relative Field	Angle of Depression (Deg)	Relative Field	Angle of Depression (Deg)	Relative Field
-90	0.000	-44	0.729	0	1.000	46	0.705
-89	0.021	-43	0.741	1	1.000	47	0.693
-88	0.040	-42	0.752	2	0.999	48	0.680
-87	0.059	-41	0.763	3	0.999	49	0.667
-86	0.078	-40	0.774	4	0.998	50	0.654
-85	0.096	-39	0.785	5	0.996	51	0.641
-84	0.114	-38	0.796	6	0.995	52	0.628
-83	0.133	-37	0.806	7	0.993	53	0.614
-82	0.151	-36	0.816	8	0.991	54	0.600
-81	0.168	-35	0.826	9	0.988	55	0.586
-80	0.186	-34	0.835	10	0.985	56	0.572
-79	0.204	-33	0.845	11	0.982	57	0.558
-78	0.221	-32	0.854	12	0.979	58	0.544
-77	0.239	-31	0.862	13	0.975	59	0.529
-76	0.256	-30	0.871	14	0.971	60	0.514
-75	0.273	-29	0.879	15	0.967	61	0.499
-74	0.290	-28	0.887	16	0.963	62	0.484
-73	0.307	-27	0.895	17	0.958	63	0.469
-72	0.324	-26	0.903	18	0.953	64	0.453
-71	0.341	-25	0.910	19	0.948	65	0.437
-70	0.357	-24	0.917	20	0.942	66	0.422
-69	0.373	-23	0.924	21	0.936	67	0.406
-68	0.390	-22	0.930	22	0.930	68	0.390
-67	0.406	-21	0.936	23	0.924	69	0.373
-66	0.422	-20	0.942	24	0.917	70	0.357
-65	0.437	-19	0.948	25	0.910	71	0.341
-64	0.453	-18	0.953	26	0.903	72	0.324
-63	0.469	-17	0.958	27	0.895	73	0.307
-62	0.484	-16	0.963	28	0.887	74	0.290
-61	0.499	-15	0.967	29	0.879	75	0.273
-60	0.514	-14	0.971	30	0.871	76	0.256
-59	0.529	-13	0.975	31	0.862	77	0.239
-58	0.544	-12	0.979	32	0.854	78	0.221
-57	0.558	-11	0.982	33	0.845	79	0.204
-56	0.572	-10	0.985	34	0.835	80	0.186
-55	0.586	-9	0.988	35	0.826	81	0.168
-54	0.600	-8	0.991	36	0.816	82	0.151
-53	0.614	-7	0.993	37	0.806	83	0.133
-52	0.628	-6	0.995	38	0.796	84	0.114
-51	0.641	-5	0.996	39	0.785	85	0.096
-50	0.654	-4	0.998	40	0.774	86	0.078
-49	0.667	-3	0.999	41	0.763	87	0.059
-48	0.680	-2	0.999	42	0.752	88	0.040
-47	0.693	-1	1.000	43	0.741	89	0.021
-46	0.705	0	1.000	44	0.729	90	0.000
-45	0.717			45	0.717		