

EXHIBIT 2

Description of Transaction

The Assignor proposes to assign the license of WOPX(TV), Melbourne, Florida (Facility ID 67602), to Paxson Orlando License, Inc.

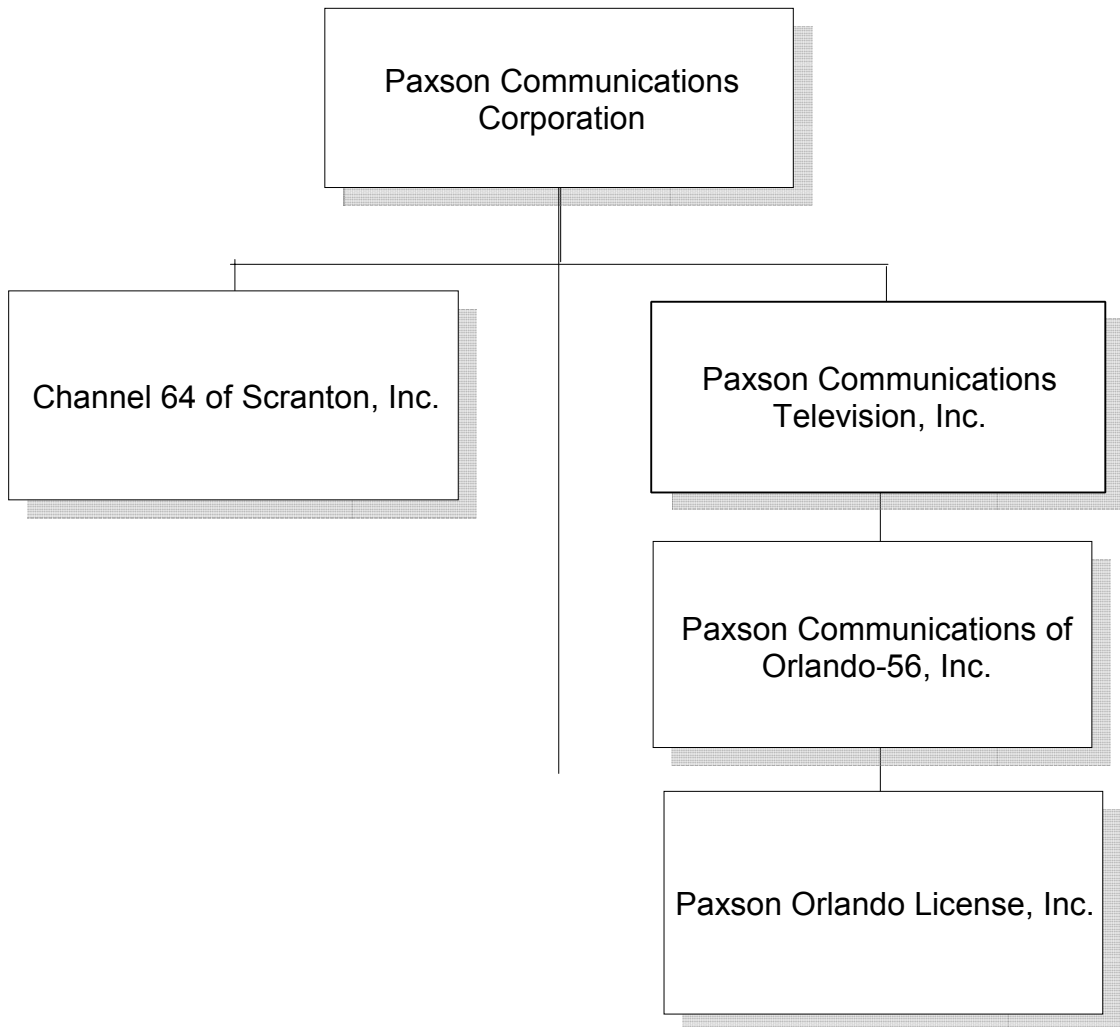
Paxson Orlando License, Inc. is a wholly-owned subsidiary of Paxson Communications of Orlando-56, Inc., the wholly-owned subsidiary of Paxson Communications Television, Inc., which is a wholly-owned subsidiary of Paxson Communications Corporation, which is the parent of Channel 56 of Orlando, Inc., licensee of WOPX(TV).

Paxson Orlando License, Inc. will hold the FCC license for the station and Paxson Communications of Orlando-56, Inc. will continue to own all of the other assets used or useful in the business or operations of the station. The applicants expressly recognize that the station licenses and other assets must be transferred together at any future point.

The officers and director of Paxson Orlando License, Inc., Paxson Communications of Orlando-56, Inc., Paxson Communications Television, Inc. and Paxson Communications Corporation are shown on the attached pages.

Since the license for WOPX(TV) will be assigned by Channel 56 of Orlando, Inc. to another wholly-owned subsidiary of Paxson Communications Corporation, the proposed assignment represents a transfer of control consistent with Section 73.3540(f)(5) of the Commission's Rules. (See attached chart).

WOPX(TV), Melbourne, Florida
Facility ID 67602
FCC Form 316
June 2001



Paxson Orlando License, Inc.

Line 1 - Name and Address of Assignee, Officers, Directors and Stockholders

Line 2 - Citizenship

Line 3 - Positional Interest

Line 4 - Percentage of Votes

Line 5 - Percentage of Total Assets

	(a)	(b)	(c)
1.	Paxson Orlando License, Inc. 601 Clearwater Park Road West Palm Beach, Florida 33401-6233	Lowell W. Paxson 780 South Ocean Boulevard Palm Beach, Florida 33480	Jeffrey A. Sagansky 301 Australian, Suite 247 Palm Beach, Florida 33480
2.	n/a	USA	USA
3.	n/a	Chairman & Director	President
4.	n/a	0%	0%
5.	n/a	0%	0%

Paxson Orlando License, Inc. (contd.)

Line 1 - Name and Address of Assignee, Officers, Directors and Stockholders

Line 2 - Citizenship

Line 3 - Positional Interest

Line 4 - Percentage of Votes

Line 5 - Percentage of Total Assets

	(d)	(e)	(f)
1.	Anthony L. Morrison 255 Southland Road Palm Beach, Florida 33480	Thomas E. Severson, Jr. 82 Dunbar East Palm Beach Gardens, Florida 33410	Adam K. Weinstein 642 Ibis Drive Delray Beach, Florida 33444
2.	USA	USA	USA
3.	Vice President & Assistant Secretary	Treasurer & Vice President	Vice President
4.	0%	0%	0%
5.	0%	0%	0%

Paxson Orlando License, Inc (contd.)

Line 1 - Name and Address of Assignee, Officers, Directors and Stockholders

Line 2 - Citizenship

Line 3 - Positional Interest

Line 4 - Percentage of Votes

Line 5 - Percentage of Total Assets

	(g)	(h)	(i)
1.	Ronald L. Rubin 260 Landings Boulevard Weston, Florida 33327	William L. Watson 117 Satinwood Lane Palm Beach Gardens, Florida 33410	Paxson Communications of Orlando-56, Inc. 601 Clearwater Park Road West Palm Beach, Florida 33401-6233
2.	USA	USA	n/a
3.	Vice President	Secretary	n/a
4.	0%	0%	100%
5.	0%	0%	100%

Paxson Communications of Orlando-56, Inc.

Line 1 - Name and Address of Assignee, Officers, Directors and Stockholders

Line 2 - Citizenship

Line 3 - Positional Interest

Line 4 - Percentage of Votes

Line 5 - Percentage of Total Assets

	(a)	(b)	(c)
1.	Paxson Communications of Orlando-56, Inc. 601 Clearwater Park Road West Palm Beach, Florida 33401-6233	Lowell W. Paxson 780 South Ocean Boulevard Palm Beach, Florida 33480	Jeffrey A. Sagansky 301 Australian, Suite 247 Palm Beach, Florida 33480
2.	n/a	USA	USA
3.	n/a	Chairman & Director	President
4.	n/a	0%	0%
5.	n/a	0%	0%

Paxson Communications of Orlando-56, Inc. (contd.)

Line 1 - Name and Address of Assignee, Officers, Directors and Stockholders

Line 2 - Citizenship

Line 3 - Positional Interest

Line 4 - Percentage of Votes

Line 5 - Percentage of Total Assets

	(d)	(e)	(f)
1.	Anthony L. Morrison 255 Southland Road Palm Beach, Florida 33480	Thomas E. Severson, Jr. 82 Dunbar East Palm Beach Gardens, Florida 33410	Adam K. Weinstein 642 Ibis Drive Delray Beach, Florida 33444
2.	USA	USA	USA
3.	Vice President & Assistant Secretary	Treasurer & Vice President	Vice President
4.	0%	0%	0%
5.	0%	0%	0%

Paxson Communications of Orlando-56, Inc (contd.)

Line 1 - Name and Address of Assignee, Officers, Directors and Stockholders

Line 2 - Citizenship

Line 3 - Positional Interest

Line 4 - Percentage of Votes

Line 5 - Percentage of Total Assets

	(g)	(h)	(i)
1.	Ronald L. Rubin 260 Landings Boulevard Weston, Florida 33327	William L. Watson 117 Satinwood Lane Palm Beach Gardens, Florida 33410	Paxson Communications of Television, Inc. 601 Clearwater Park Road West Palm Beach, Florida 33401-6233
2.	USA	USA	n/a
3.	Vice President	Secretary	n/a
4.	0%	0%	100%
5.	0%	0%	100%

Paxson Communications Television, Inc.

Line 1 - Name and Address of Assignee, Officers, Directors and Stockholders

Line 2 - Citizenship

Line 3 - Positional Interest

Line 4 - Percentage of Votes

Line 5 - Percentage of Total Assets

	(a)	(b)	(c)
1.	Paxson Communications Television, Inc. 601 Clearwater Park Road West Palm Beach, Florida 33401-6233	Lowell W. Paxson 780 South Ocean Boulevard Palm Beach, Florida 33480	Jeffrey A. Sagansky 301 Australian, Suite 247 Palm Beach, Florida 33480
2.	n/a	USA	USA
3.	n/a	Chairman & Director	President
4.	n/a	0%	0%
5.	n/a	0%	0%

Paxson Communications Television, Inc. (contd.)

Line 1 - Name and Address of Assignee, Officers, Directors and Stockholders

Line 2 - Citizenship

Line 3 - Positional Interest

Line 4 - Percentage of Votes

Line 5 - Percentage of Total Assets

	(d)	(e)	(f)
1.	Anthony L. Morrison 255 Southland Road Palm Beach, Florida 33480	Thomas E. Severson, Jr. 82 Dunbar East Palm Beach Gardens, Florida 33410	Adam K. Weinstein 642 Ibis Drive Delray Beach, Florida 33444
2.	USA	USA	USA
3.	Vice President & Assistant Secretary	Treasurer & Vice President	Vice President
4.	0%	0%	0%
5.	0%	0%	0%

Paxson Communications Television, Inc (contd.)

Line 1 - Name and Address of Assignee, Officers, Directors and Stockholders

Line 2 - Citizenship

Line 3 - Positional Interest

Line 4 - Percentage of Votes

Line 5 - Percentage of Total Assets

	(g)	(h)	(i)
1.	Ronald L. Rubin 260 Landings Boulevard Weston, Florida 33327	William L. Watson 117 Satinwood Lane Palm Beach Gardens, Florida 33410	Paxson Communications Corporation 601 Clearwater Park Road West Palm Beach, Florida 33401-6233
2.	USA	USA	n/a
3.	Vice President	Secretary	n/a
4.	0%	0%	100%
5.	0%	0%	100%

Paxson Communications Corporation

Line 1 - Name and Address of Assignee, Officers, Directors and Stockholders

Line 2 - Citizenship

Line 3 - Positional Interest

Line 4 - Percentage of Votes

Line 5 - Percentage of Total Assets

	(a)	(b)	(c)
1.	Paxson Communications Corporation 601 Clearwater Park Road West Palm Beach, Florida 33401-6233	Lowell W. Paxson 780 South Ocean Boulevard Palm Beach, Florida 33480	Jeffrey A. Sagansky 301 Australian, Suite 247 Palm Beach, Florida 33480
2.	n/a	USA	USA
3.	n/a	Chairman & Director	President, CEO & Director
4.	n/a	0%	0%
5.	n/a	0%	0%

Paxson Communications Corporation (contd.)

Line 1 - Name and Address of Assignee, Officers, Directors and Stockholders

Line 2 - Citizenship

Line 3 - Positional Interest

Line 4 - Percentage of Votes

Line 5 - Percentage of Total Assets

	(d)	(e)	(f)
1.	Anthony L. Morrison 255 Southland Road Palm Beach, Florida 33480	Seth A. Grossman 501 South Atlantic Drive Lantana, Florida 33462	Thomas E. Severson, Jr. 82 Dunbar East Palm Beach Gardens, Florida 33410
2.	USA	USA	USA
3.	Executive Vice President, Secretary, Chief Legal Officer	Executive Vice President, Chief Strategic Officer	Senior Vice President, Treasurer, Chief Financial Officer
4.	0%	0%	0%
5.	0%	0%	0%

Paxson Communications Corporation (contd.)

Line 1 - Name and Address of Assignee, Officers, Directors and Stockholders

Line 2 - Citizenship

Line 3 - Positional Interest

Line 4 - Percentage of Votes

Line 5 - Percentage of Total Assets

	(g)	(h)	(i)
1.	Adam K. Weinstein 642 Ibis Drive Delray Beach, Florida 33444	Ronald L. Rubin 260 Landings Boulevard Weston, Florida 33327	Emma Cordoba 491 Pelican Lane South Jupiter, Florida 33458
2.	USA	USA	USA
3.	Vice President & Assistant Secretary	Vice President, Controller & Chief Accounting Officer	Vice President
4.	0%	0%	0%
5.	0%	0%	0%

Paxson Communications Corporation (contd.)

Line 1 - Name and Address of Assignee, Officers, Directors and Stockholders

Line 2 - Citizenship

Line 3 - Positional Interest

Line 4 - Percentage of Votes

Line 5 - Percentage of Total Assets

	(g)	(h)	(i)
1.	William L. Watson 117 Satinwood Lane Palm Beach Gardens, Florida 33410	David Macaione 2816½ Grand Canal Venice, California 90291	William E. Simon, Jr. 440 Toyopa Drive Pacific Palisades, California 90272
2.	USA	USA	USA
3.	Vice President & Assistant Secretary	Vice President	Vice Chairman
4.	0%	0%	0%
5.	0%	0%	0%

Paxson Communications Corporation (contd.)

Line 1 - Name and Address of Assignee, Officers, Directors and Stockholders

Line 2 - Citizenship

Line 3 - Positional Interest

Line 4 - Percentage of Votes

Line 5 - Percentage of Total Assets

	(j)	(k)	(l)
1.	R. Brandon Burgess 58 West 58 th Street, 9-E New York, New York 10019	Bruce L. Burnham 10 Haig Point Circle Hilton Head, South Carolina 29938	James L. Greenwald 510 Park Avenue New York, New York 10022
2.	USA	USA	USA
3.	Director	Director	Director
4.	0%	0%	0%
5.	0%	0%	0%

Paxson Communications Corporation (contd.)

Line 1 - Name and Address of Assignee, Officers, Directors and Stockholders

Line 2 - Citizenship

Line 3 - Positional Interest

Line 4 - Percentage of Votes

Line 5 - Percentage of Total Assets

	(m)	(n)	(o)
1.	John E. Oxendine 2727 North Ocean Boulevard Boca Raton, Florida 33431	Keith G. Turner 24 Gloria Lane Huntington, New York 11743	Royce E. Wilson 547 Ocampo Drive Pacific Palisades, California 90272
2.	USA	USA	USA
3.	Director	Director	Director
4.	0%	0%	0%
5.	0%	0%	0%

Paxson Communications Corporation (contd.)

Line 1 - Name and Address of Assignee, Officers, Directors and Stockholders

Line 2 - Citizenship

Line 3 - Positional Interest

Line 4 - Percentage of Votes

Line 5 - Percentage of Total Assets

	(p)	(q)
1.	Paxson Enterprises, Inc. 601 Clearwater Park Road West Palm Beach, Florida 33401-6233	Second Crystal Diamond, LP 601 Clearwater Park Road West Palm Beach, Florida 33401-6233
2.	n/a	n/a
3.	n/a	n/a
4.	Greater than 10%	Greater than 10%
5.	Greater than 10%	Greater than 10%