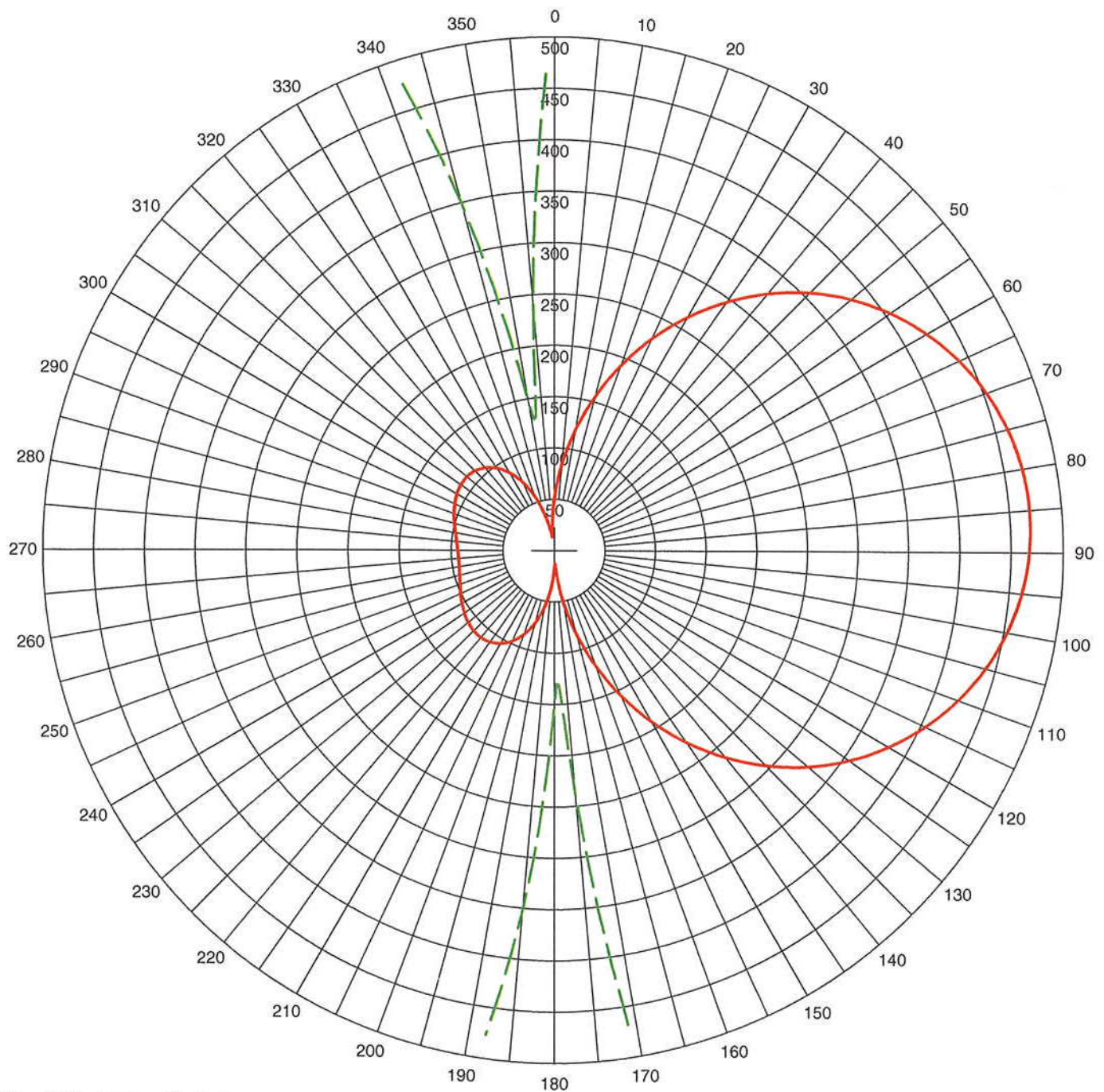


# WAYI Nighttime Directional Array - Exhibit #1G5(a)



Theo RMS: 230.24 mV/m@1km  
 Std RMS: 242.056 mV/m@1km  
 Q: 11.557 mV/m@1km

Horizontal Plane Standard Pattern

— Pattern (mV/m @ 1km)  
 - - - Pattern X10

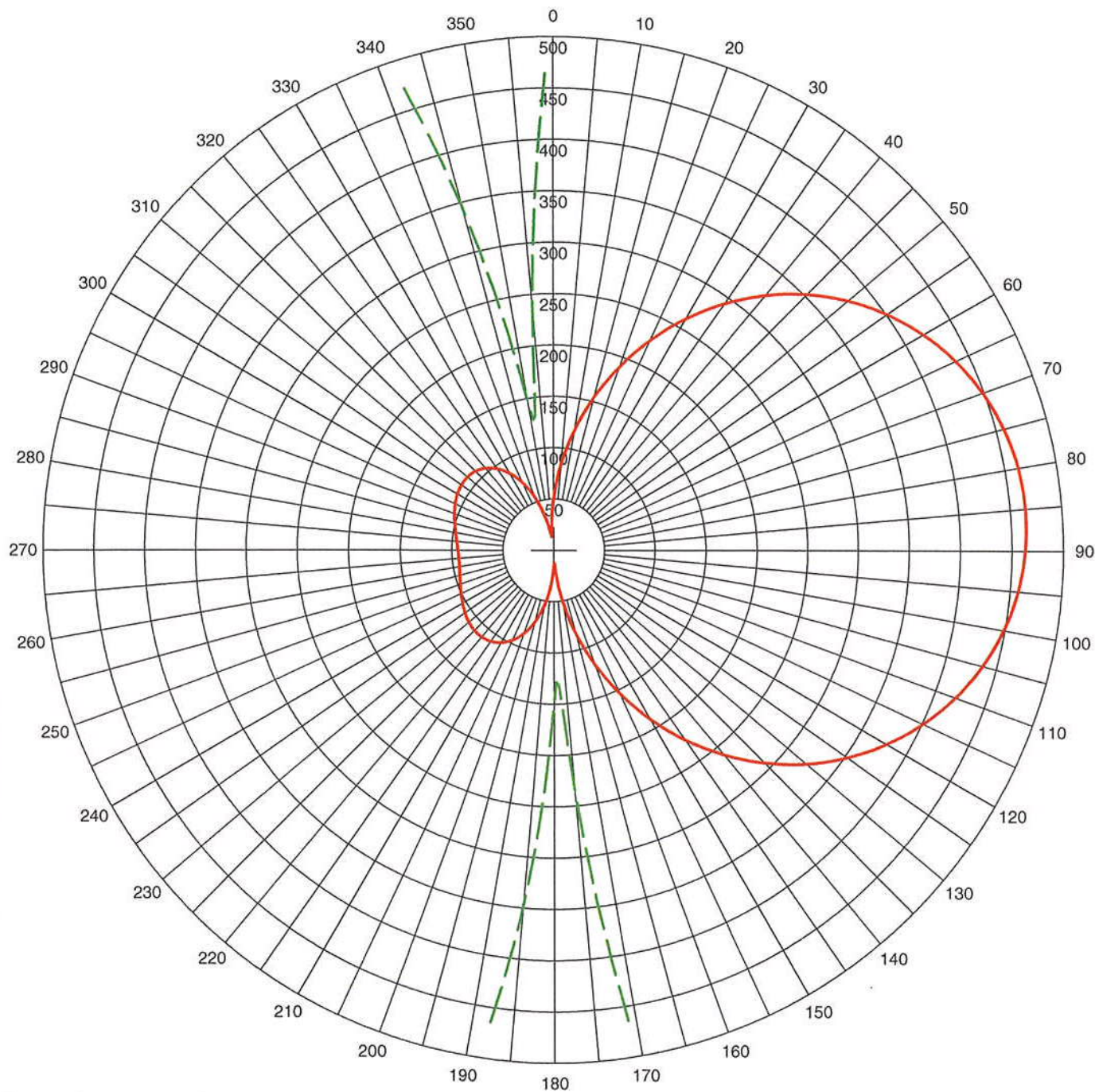
| # | Field Ratio | Phase (deg) | Spacing (deg) | Orient (deg) | Height (deg) | Ref Switch | TL Switch | A (deg) | B (deg) | C (deg) | D (deg) |
|---|-------------|-------------|---------------|--------------|--------------|------------|-----------|---------|---------|---------|---------|
| 1 | 0.650       | 135.0       | 0.0           | 0.0          | 85.1         | 0          | 0         | 0.0     | 0.0     | 0.0     | 0.0     |
| 2 | 1.000       | 0.0         | 60.0          | 85.0         | 85.1         | 0          | 0         | 0.0     | 0.0     | 0.0     | 0.0     |
| 3 | 0.660       | -137.0      | 120.0         | 85.0         | 85.1         | 0          | 0         | 0.0     | 0.0     | 0.0     | 0.0     |

Call: WAYI  
 Freq: 1550 kHz  
 BUNNELL, FL, US  
 Lat: 29-27-09 N  
 Lng: 081-17-21 W  
 Power: 0.52 kW  
 Theo RMS: 230.24 mV/m @ 1km

**EXHIBIT #1G5(a)**



# WAYI Nighttime Directional Array - Exhibit #1G5(b)



Theo RMS: 230.24 mV/m@1km  
 Std RMS: 242.056 mV/m@1km  
 Q: 11.557 mV/m@1km

Standard Pattern at Theta = 5.00 Degrees

— Pattern (mV/m @ 1km)  
 - - - Pattern X10

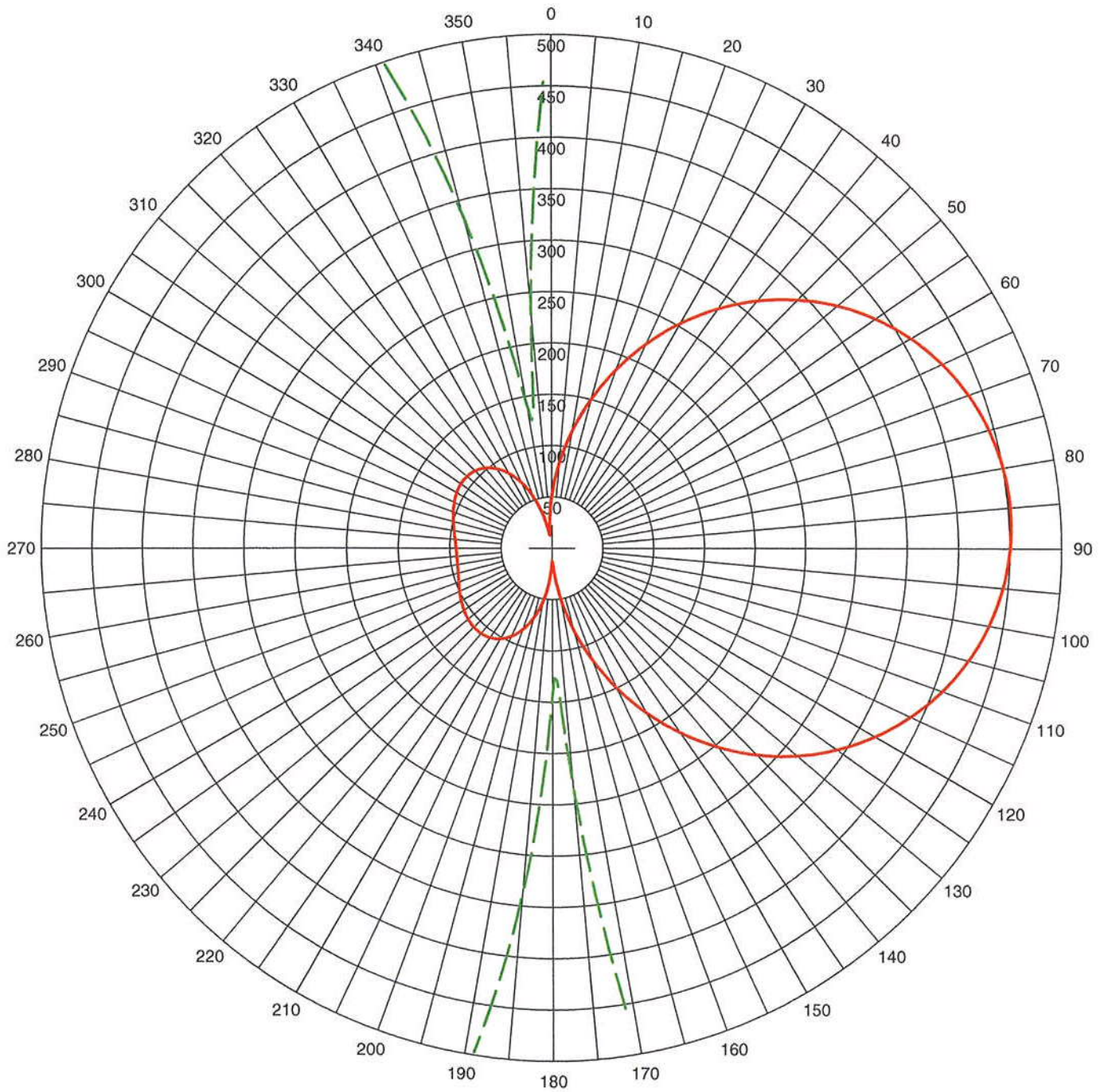
| # | Field Ratio | Phase (deg) | Spacing (deg) | Orient (deg) | Height (deg) | Ref Switch | TL Switch | A (deg) | B (deg) | C (deg) | D (deg) |
|---|-------------|-------------|---------------|--------------|--------------|------------|-----------|---------|---------|---------|---------|
| 1 | 0.650       | 135.0       | 0.0           | 0.0          | 85.1         | 0          | 0         | 0.0     | 0.0     | 0.0     | 0.0     |
| 2 | 1.000       | 0.0         | 60.0          | 85.0         | 85.1         | 0          | 0         | 0.0     | 0.0     | 0.0     | 0.0     |
| 3 | 0.660       | -137.0      | 120.0         | 85.0         | 85.1         | 0          | 0         | 0.0     | 0.0     | 0.0     | 0.0     |

Call: WAYI  
 Freq: 1550 kHz  
 BUNNELL, FL, US  
 Lat: 29-27-09 N  
 Lng: 081-17-21 W  
 Power: 0.52 kW  
 Theo RMS: 230.24 mV/m @ 1km

**EXHIBIT #1G5(b)**



# WAYI Nighttime Directional Array - Exhibit #1G5(c)



Theo RMS: 230.24 mV/m@1km  
 Std RMS: 242.056 mV/m@1km  
 Q: 11.557 mV/m@1km

Standard Pattern at Theta = 10.00 Degrees

— Pattern (mV/m @ 1km)  
 - - - Pattern X10

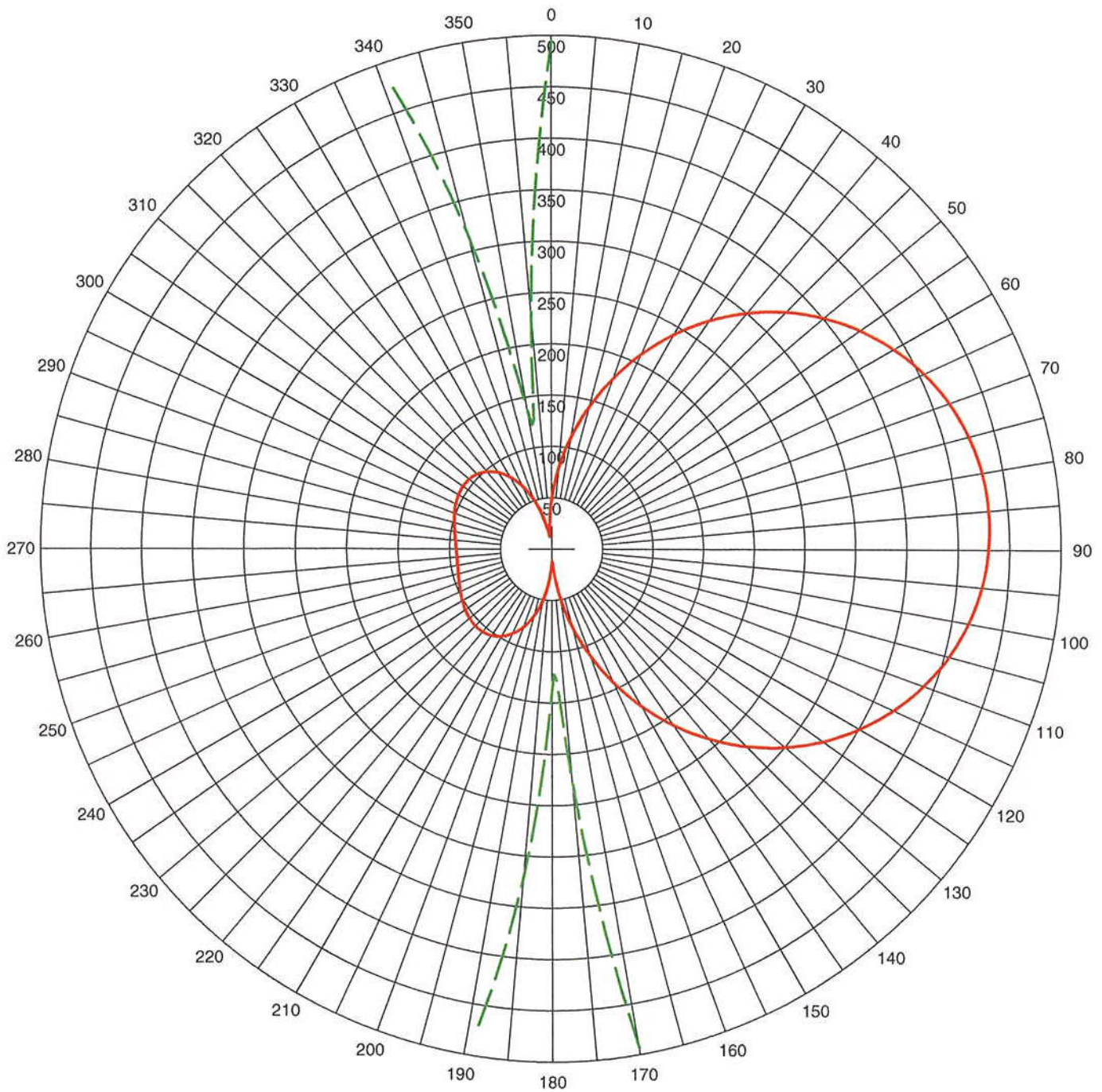
| # | Field Ratio | Phase (deg) | Spacing (deg) | Orient (deg) | Height (deg) | Ref Switch | TL Switch | A (deg) | B (deg) | C (deg) | D (deg) |
|---|-------------|-------------|---------------|--------------|--------------|------------|-----------|---------|---------|---------|---------|
| 1 | 0.650       | 135.0       | 0.0           | 0.0          | 85.1         | 0          | 0         | 0.0     | 0.0     | 0.0     | 0.0     |
| 2 | 1.000       | 0.0         | 60.0          | 85.0         | 85.1         | 0          | 0         | 0.0     | 0.0     | 0.0     | 0.0     |
| 3 | 0.660       | -137.0      | 120.0         | 85.0         | 85.1         | 0          | 0         | 0.0     | 0.0     | 0.0     | 0.0     |

Call: WAYI  
 Freq: 1550 kHz  
 BUNNELL, FL, US  
 Lat: 29-27-09 N  
 Lng: 081-17-21 W  
 Power: 0.52 kW  
 Theo RMS: 230.24 mV/m @ 1km

**EXHIBIT #1G5(c)**



# WAYI Nighttime Directional Array - Exhibit #1G5(d)



Theo RMS: 230.24 mV/m @ 1km  
 Std RMS: 242.056 mV/m @ 1km  
 Q: 11.557 mV/m @ 1km

Standard Pattern at Theta = 15.00 Degrees

— Pattern (mV/m @ 1km)  
 - - - Pattern X10

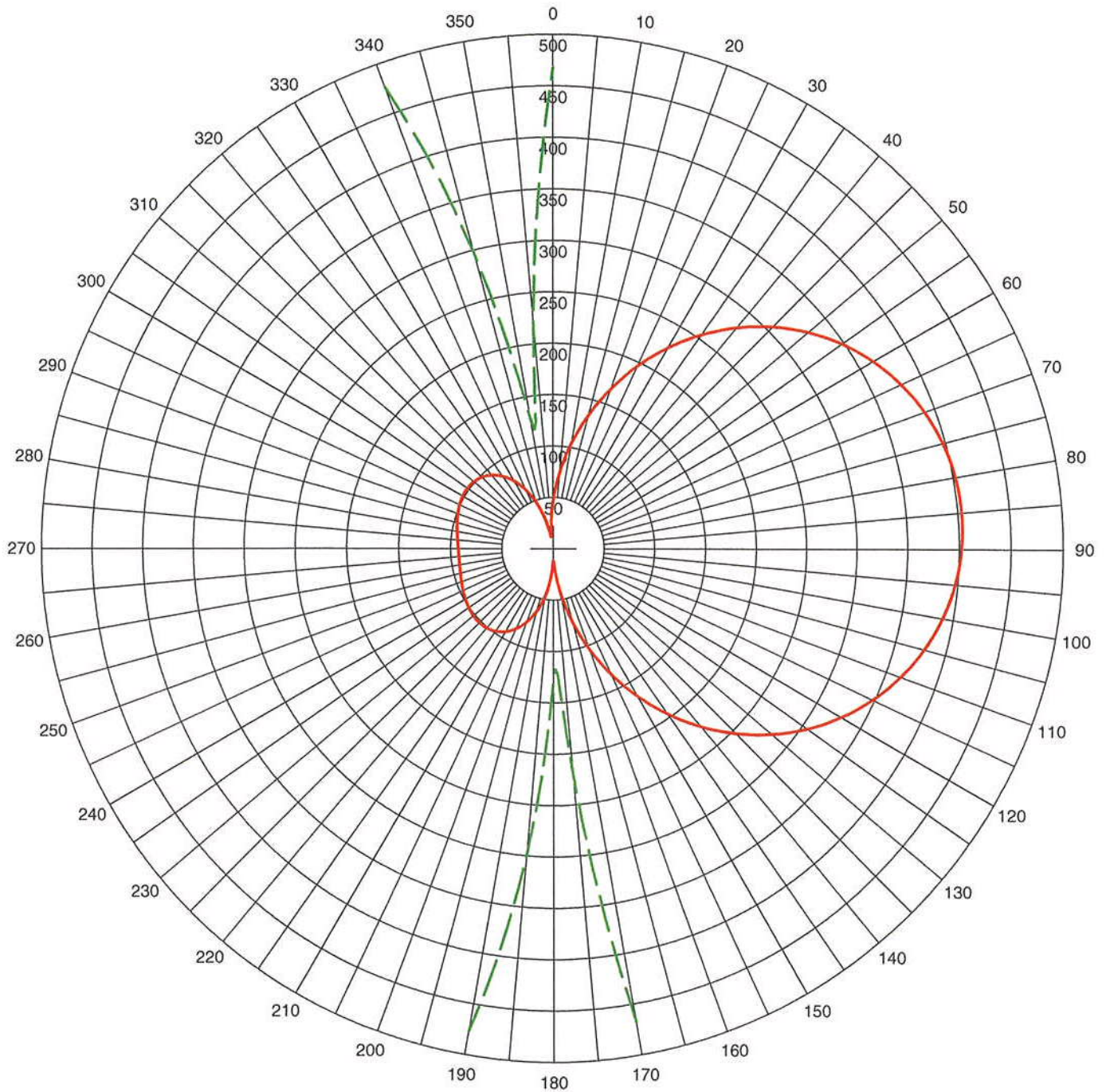
| # | Field Ratio | Phase (deg) | Spacing (deg) | Orient (deg) | Height (deg) | Ref Switch | TL Switch | A (deg) | B (deg) | C (deg) | D (deg) |
|---|-------------|-------------|---------------|--------------|--------------|------------|-----------|---------|---------|---------|---------|
| 1 | 0.650       | 135.0       | 0.0           | 0.0          | 85.1         | 0          | 0         | 0.0     | 0.0     | 0.0     | 0.0     |
| 2 | 1.000       | 0.0         | 60.0          | 85.0         | 85.1         | 0          | 0         | 0.0     | 0.0     | 0.0     | 0.0     |
| 3 | 0.660       | -137.0      | 120.0         | 85.0         | 85.1         | 0          | 0         | 0.0     | 0.0     | 0.0     | 0.0     |

Call: WAYI  
 Freq: 1550 kHz  
 BUNNELL, FL, US  
 Lat: 29-27-09 N  
 Lng: 081-17-21 W  
 Power: 0.52 kW  
 Theo RMS: 230.24 mV/m @ 1km

**EXHIBIT #1G5(d)**



# WAYI Nighttime Directional Array - Exhibit #1G5(e)



Theo RMS: 230.24 mV/m@1km  
 Std RMS: 242.056 mV/m@1km  
 Q: 11.557 mV/m@1km

Standard Pattern at Theta = 20.00 Degrees

— Pattern (mV/m @ 1km)  
 - - - Pattern X10

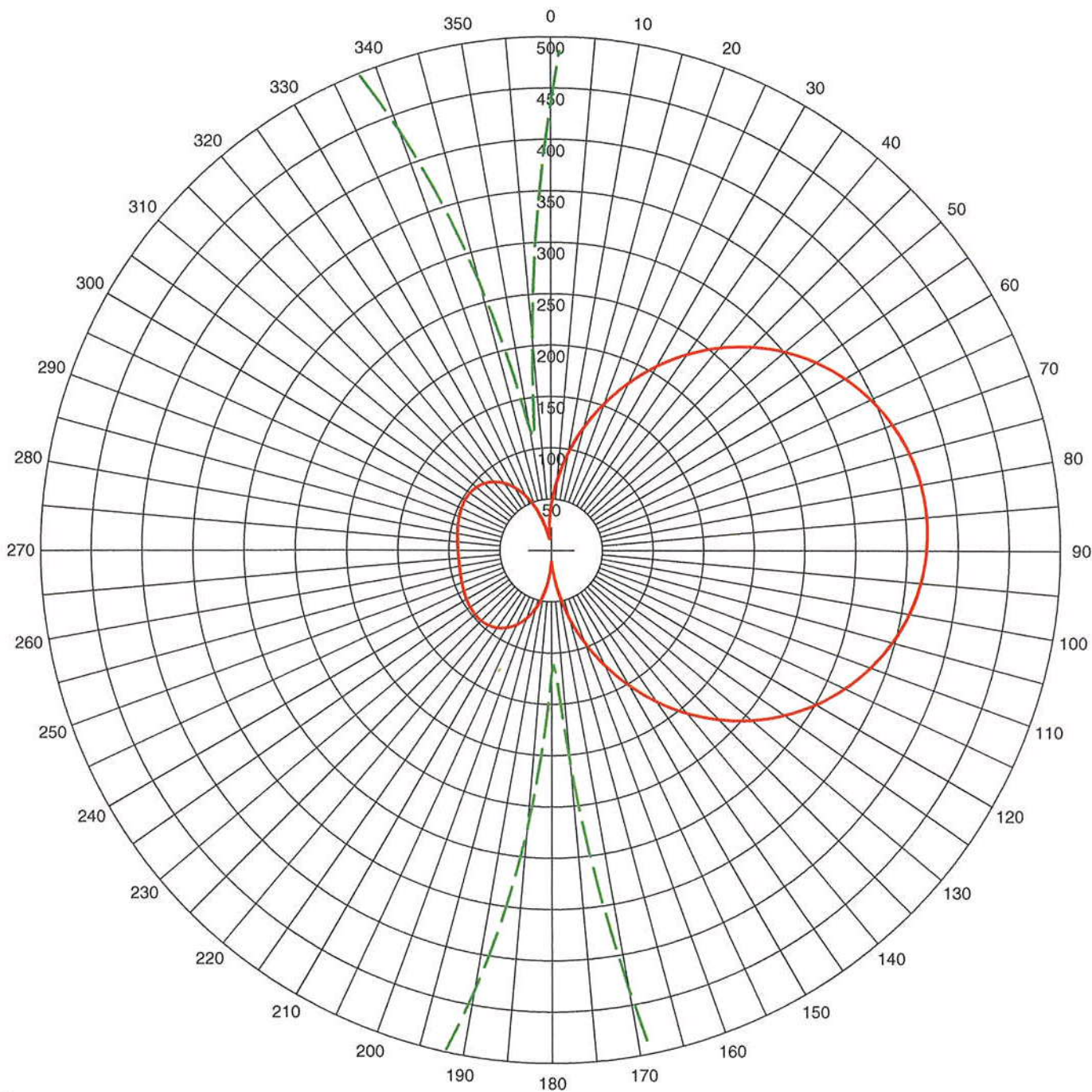
| # | Field Ratio | Phase (deg) | Spacing (deg) | Orient (deg) | Height (deg) | Ref Switch | TL Switch | A (deg) | B (deg) | C (deg) | D (deg) |
|---|-------------|-------------|---------------|--------------|--------------|------------|-----------|---------|---------|---------|---------|
| 1 | 0.650       | 135.0       | 0.0           | 0.0          | 85.1         | 0          | 0         | 0.0     | 0.0     | 0.0     | 0.0     |
| 2 | 1.000       | 0.0         | 60.0          | 85.0         | 85.1         | 0          | 0         | 0.0     | 0.0     | 0.0     | 0.0     |
| 3 | 0.660       | -137.0      | 120.0         | 85.0         | 85.1         | 0          | 0         | 0.0     | 0.0     | 0.0     | 0.0     |

Call: WAYI  
 Freq: 1550 kHz  
 BUNNELL, FL, US  
 Lat: 29-27-09 N  
 Lng: 081-17-21 W  
 Power: 0.52 kW  
 Theo RMS: 230.24 mV/m @ 1km

**EXHIBIT #1G5(e)**



WAYI Nighttime Directional Array - Exhibit #1G5(f)



Theo RMS: 230.24 mV/m@1km  
Std RMS: 242.056 mV/m@1km  
Q: 11.557 mV/m@1km

Standard Pattern at Theta = 25.00 Degrees

— Pattern (mV/m @ 1km)  
- - Pattern X10

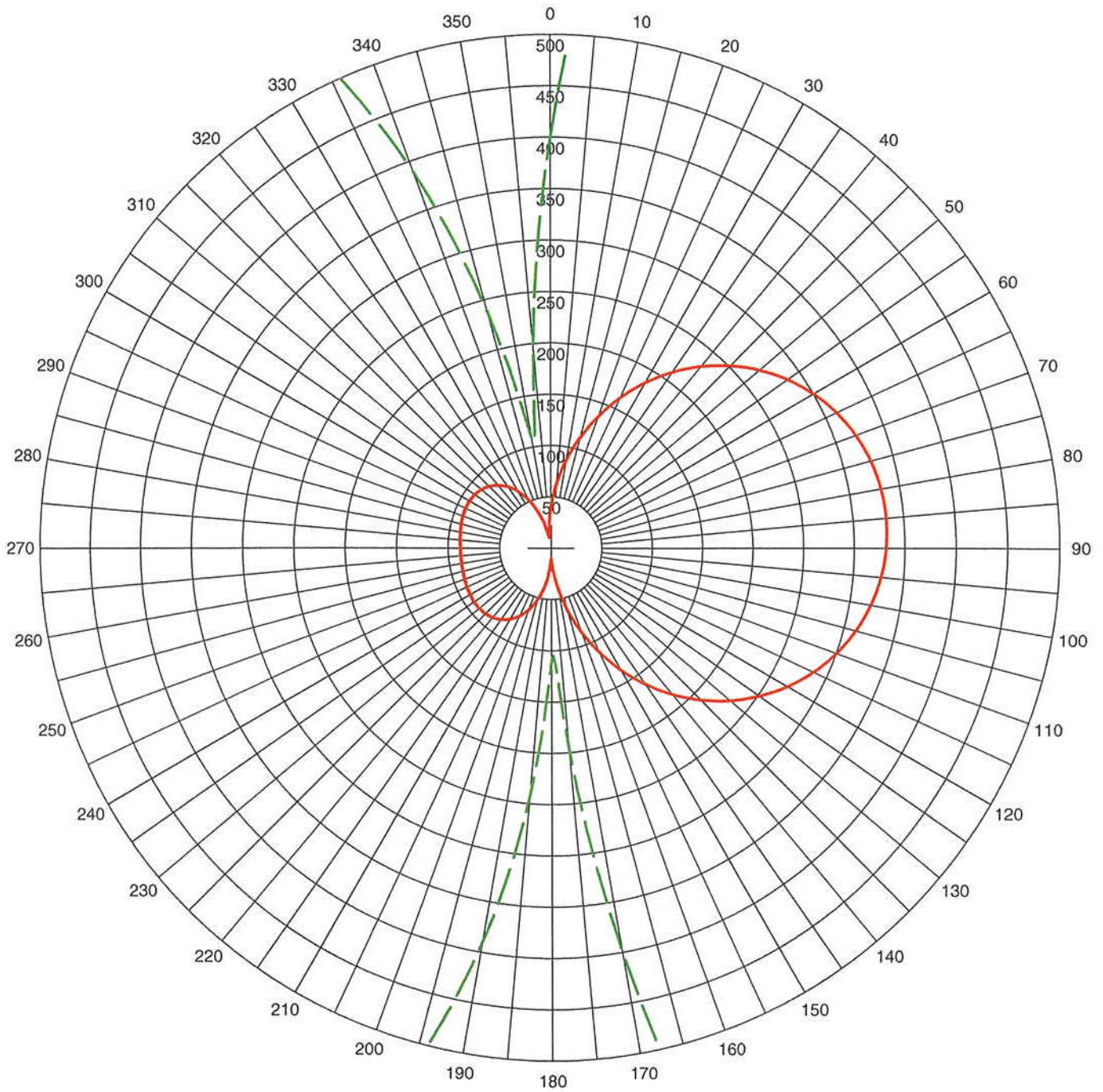
| # | Field<br>Ratio | Phase<br>(deg) | Spacing<br>(deg) | Orient<br>(deg) | Height<br>(deg) | Ref<br>Switch | TL<br>Switch | A<br>(deg) | B<br>(deg) | C<br>(deg) | D<br>(deg) |
|---|----------------|----------------|------------------|-----------------|-----------------|---------------|--------------|------------|------------|------------|------------|
| 1 | 0.650          | 135.0          | 0.0              | 0.0             | 85.1            | 0             | 0            | 0.0        | 0.0        | 0.0        | 0.0        |
| 2 | 1.000          | 0.0            | 60.0             | 85.0            | 85.1            | 0             | 0            | 0.0        | 0.0        | 0.0        | 0.0        |
| 3 | 0.660          | -137.0         | 120.0            | 85.0            | 85.1            | 0             | 0            | 0.0        | 0.0        | 0.0        | 0.0        |

Call: WAYI  
Freq: 1550 kHz  
BUNNELL, FL, US  
Lat: 29-27-09 N  
Lng: 081-17-21 W  
Power: 0.52 kW  
Theo RMS: 230.24 mV/m @ 1km

EXHIBIT #1G5(f)



# WAYI Nighttime Directional Array - Exhibit #1G5(g)



Theo RMS: 230.24 mV/m@1km  
 Std RMS: 242.056 mV/m@1km  
 Q: 11.557 mV/m@1km

Standard Pattern at Theta = 30.00 Degrees

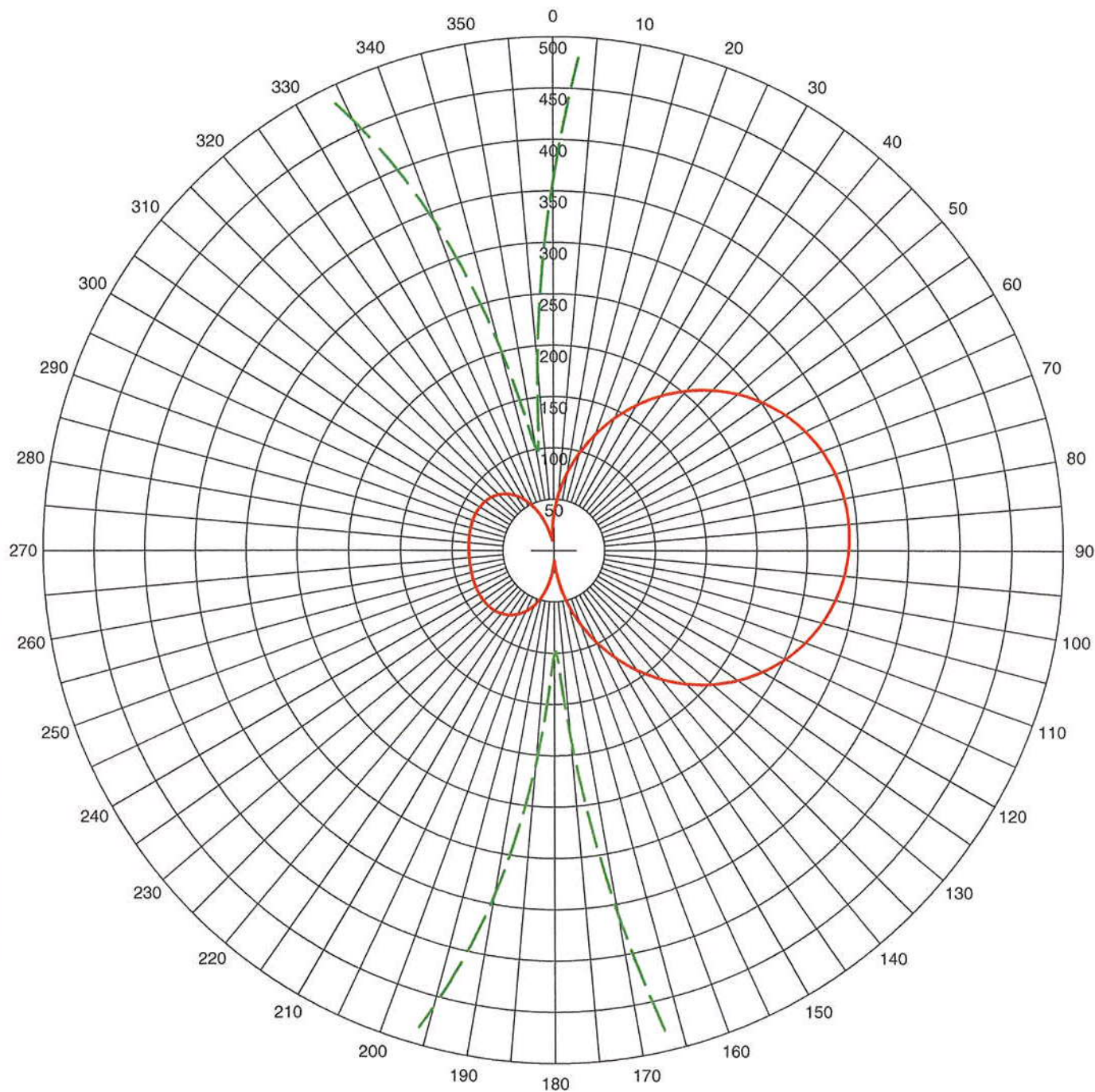
— Pattern (mV/m @ 1km)  
 - - - Pattern X10

| # | Field Ratio | Phase (deg) | Spacing (deg) | Orient (deg) | Height (deg) | Ref Switch | TL Switch | A (deg) | B (deg) | C (deg) | D (deg) |
|---|-------------|-------------|---------------|--------------|--------------|------------|-----------|---------|---------|---------|---------|
| 1 | 0.650       | 135.0       | 0.0           | 0.0          | 85.1         | 0          | 0         | 0.0     | 0.0     | 0.0     | 0.0     |
| 2 | 1.000       | 0.0         | 60.0          | 85.0         | 85.1         | 0          | 0         | 0.0     | 0.0     | 0.0     | 0.0     |
| 3 | 0.660       | -137.0      | 120.0         | 85.0         | 85.1         | 0          | 0         | 0.0     | 0.0     | 0.0     | 0.0     |

Call: WAYI  
 Freq: 1550 kHz  
 BUNNELL, FL, US  
 Lat: 29-27-09 N  
 Lng: 081-17-21 W  
 Power: 0.52 kW  
 Theo RMS: 230.24 mV/m @ 1km

**EXHIBIT #1G5(g)**

# WAYI Nighttime Directional Array - Exhibit #1G5(h)



Theo RMS: 230.24 mV/m@1km  
 Std RMS: 242.056 mV/m@1km  
 Q: 11.557 mV/m@1km

Standard Pattern at Theta = 35.00 Degrees

— Pattern (mV/m @ 1km)  
 - - - Pattern X10

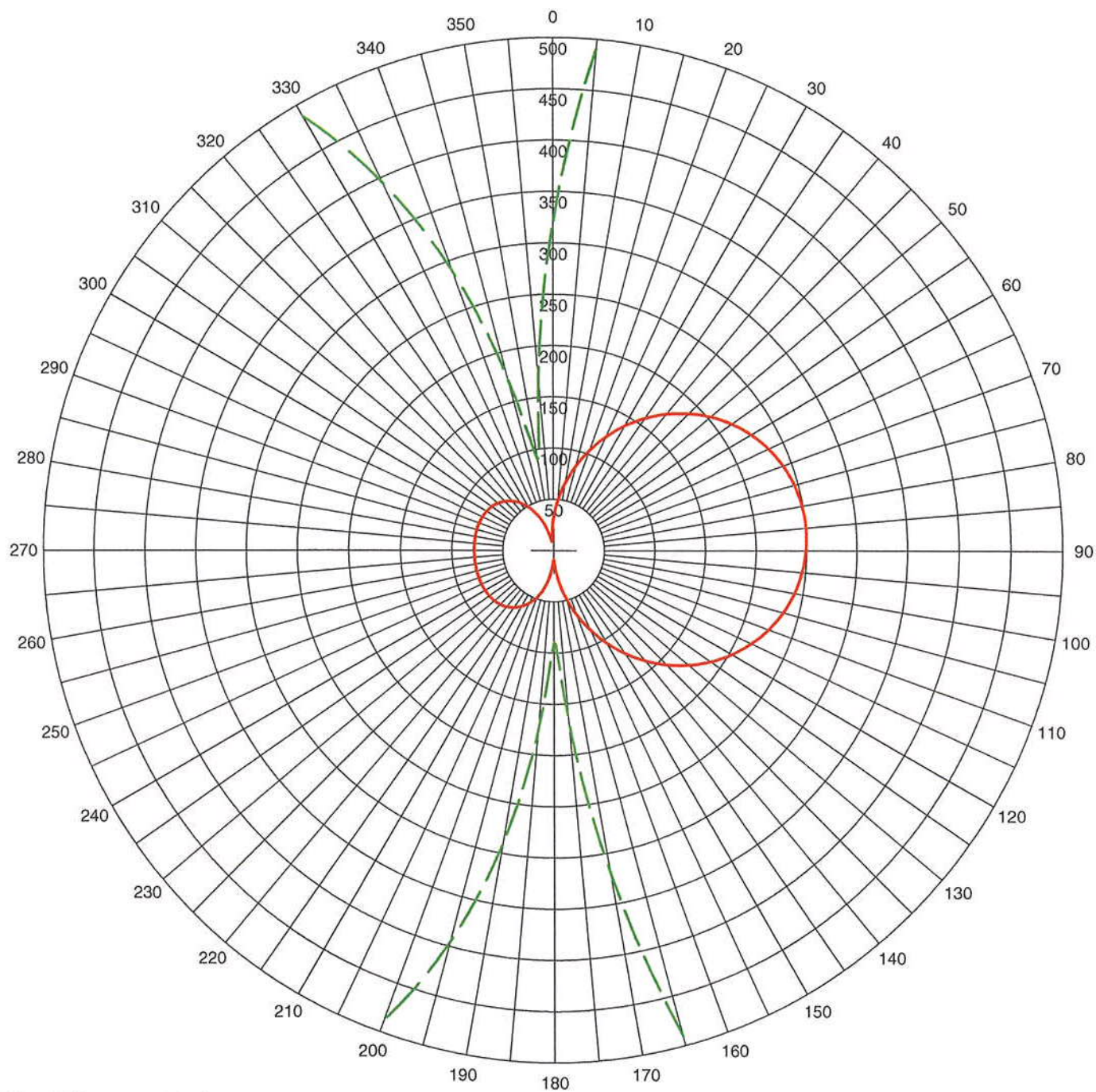
| # | Field Ratio | Phase (deg) | Spacing (deg) | Orient (deg) | Height (deg) | Ref Switch | TL Switch | A (deg) | B (deg) | C (deg) | D (deg) |
|---|-------------|-------------|---------------|--------------|--------------|------------|-----------|---------|---------|---------|---------|
| 1 | 0.650       | 135.0       | 0.0           | 0.0          | 85.1         | 0          | 0         | 0.0     | 0.0     | 0.0     | 0.0     |
| 2 | 1.000       | 0.0         | 60.0          | 85.0         | 85.1         | 0          | 0         | 0.0     | 0.0     | 0.0     | 0.0     |
| 3 | 0.660       | -137.0      | 120.0         | 85.0         | 85.1         | 0          | 0         | 0.0     | 0.0     | 0.0     | 0.0     |

Call: WAYI  
 Freq: 1550 kHz  
 BUNNELL, FL, US  
 Lat: 29-27-09 N  
 Lng: 081-17-21 W  
 Power: 0.52 kW  
 Theo RMS: 230.24 mV/m @ 1km

**EXHIBIT #1G5(h)**



# WAYI Nighttime Directional Array - Exhibit #1G5(i)



Theo RMS: 230.24 mV/m@1km  
 Std RMS: 242.056 mV/m@1km  
 Q: 11.557 mV/m@1km

Standard Pattern at Theta = 40.00 Degrees

— Pattern (mV/m @ 1km)  
 - - - Pattern X10

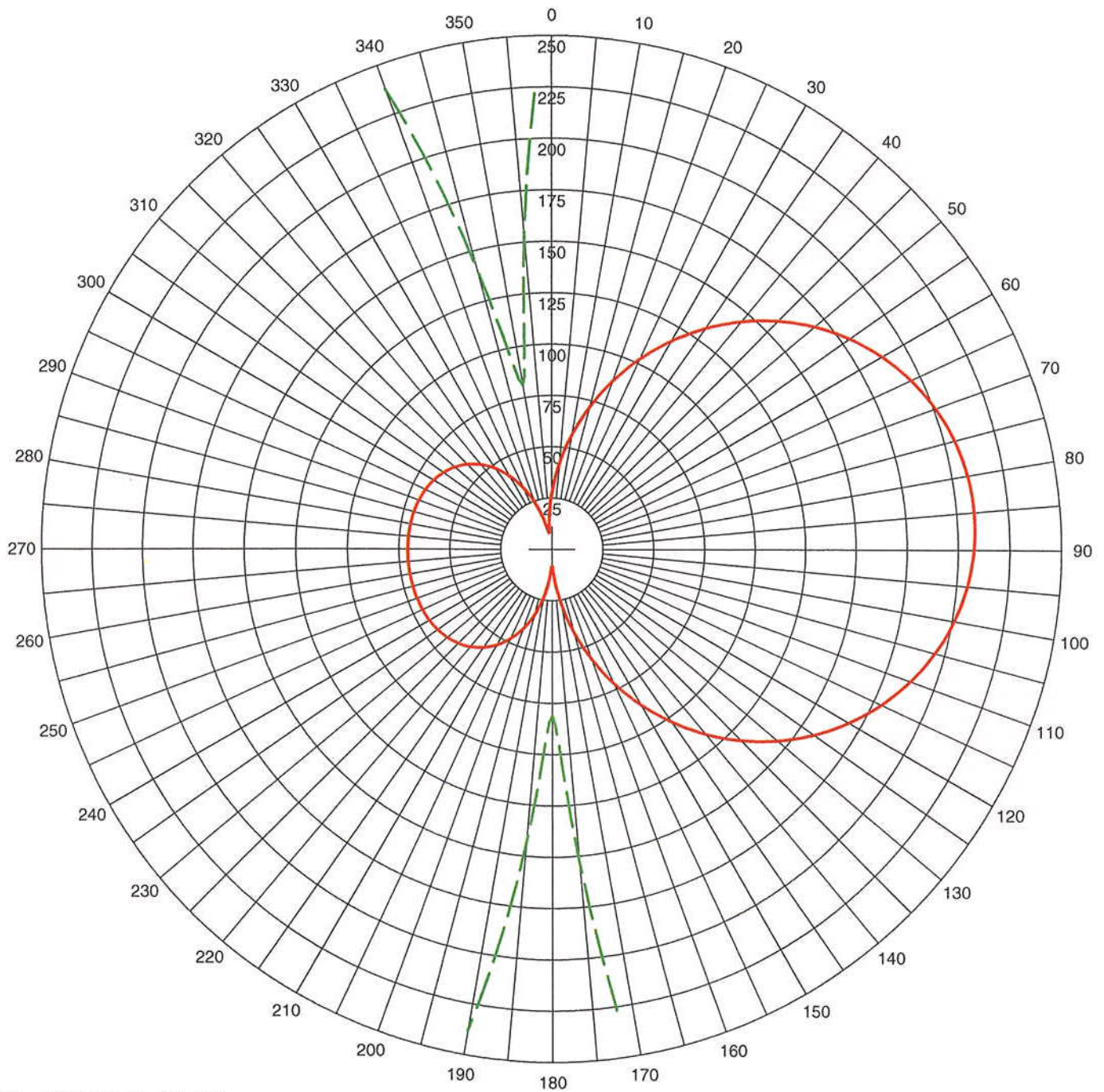
| # | Field Ratio | Phase (deg) | Spacing (deg) | Orient (deg) | Height (deg) | Ref Switch | TL Switch | A (deg) | B (deg) | C (deg) | D (deg) |
|---|-------------|-------------|---------------|--------------|--------------|------------|-----------|---------|---------|---------|---------|
| 1 | 0.650       | 135.0       | 0.0           | 0.0          | 85.1         | 0          | 0         | 0.0     | 0.0     | 0.0     | 0.0     |
| 2 | 1.000       | 0.0         | 60.0          | 85.0         | 85.1         | 0          | 0         | 0.0     | 0.0     | 0.0     | 0.0     |
| 3 | 0.660       | -137.0      | 120.0         | 85.0         | 85.1         | 0          | 0         | 0.0     | 0.0     | 0.0     | 0.0     |

Call: WAYI  
 Freq: 1550 kHz  
 BUNNELL, FL, US  
 Lat: 29-27-09 N  
 Lng: 081-17-21 W  
 Power: 0.52 kW  
 Theo RMS: 230.24 mV/m @ 1km

**EXHIBIT #1G5(i)**



# WAYI Nighttime Directional Array - Exhibit #1G5(j)



Theo RMS: 230.24 mV/m @ 1km  
 Std RMS: 242.056 mV/m @ 1km  
 Q: 11.557 mV/m @ 1km

Standard Pattern at Theta = 45.00 Degrees

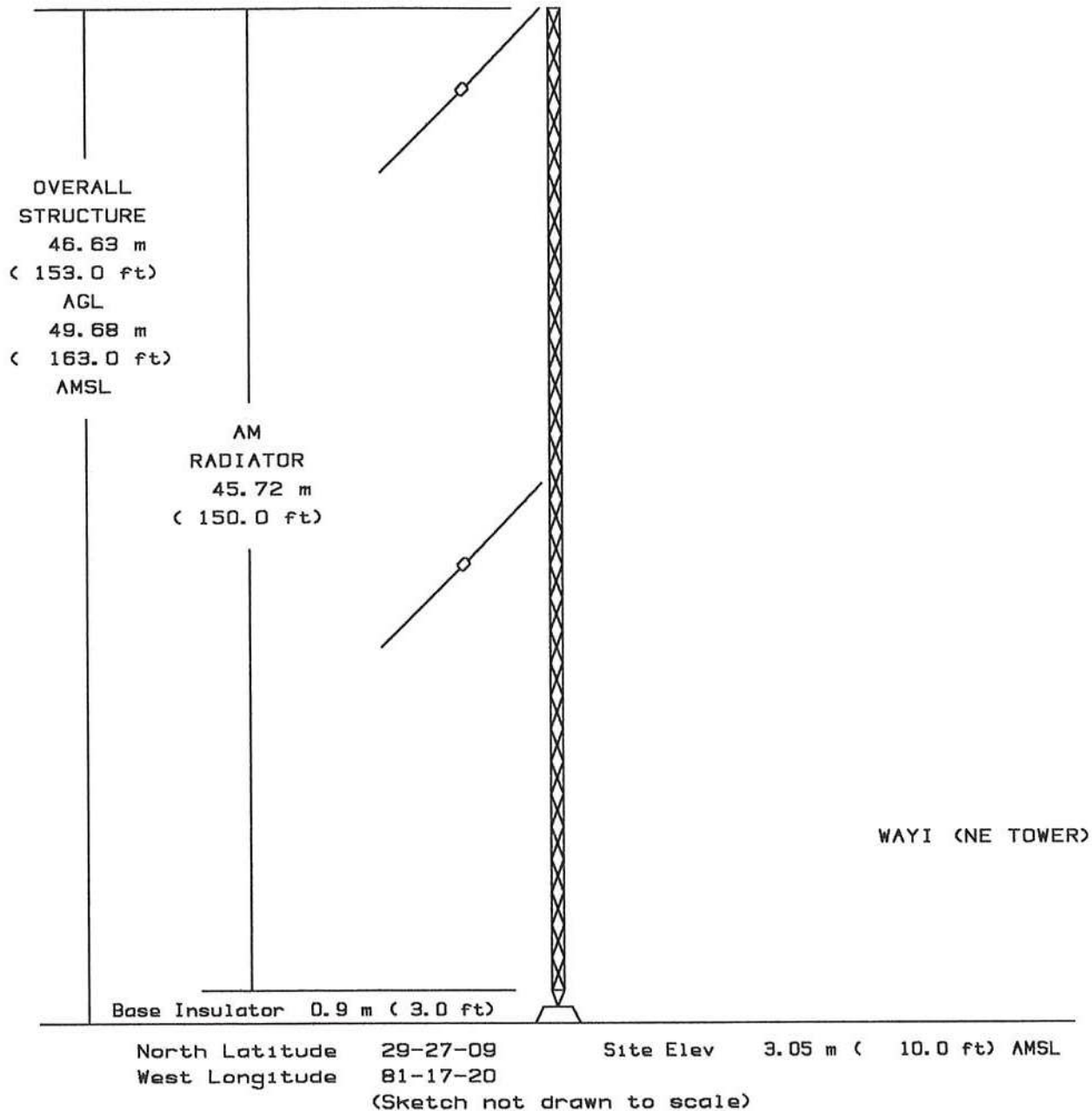
— Pattern (mV/m @ 1km)  
 - - - Pattern X10

| # | Field Ratio | Phase (deg) | Spacing (deg) | Orient (deg) | Height (deg) | Ref Switch | TL Switch | A (deg) | B (deg) | C (deg) | D (deg) |
|---|-------------|-------------|---------------|--------------|--------------|------------|-----------|---------|---------|---------|---------|
| 1 | 0.650       | 135.0       | 0.0           | 0.0          | 85.1         | 0          | 0         | 0.0     | 0.0     | 0.0     | 0.0     |
| 2 | 1.000       | 0.0         | 60.0          | 85.0         | 85.1         | 0          | 0         | 0.0     | 0.0     | 0.0     | 0.0     |
| 3 | 0.660       | -137.0      | 120.0         | 85.0         | 85.1         | 0          | 0         | 0.0     | 0.0     | 0.0     | 0.0     |

Call: WAYI  
 Freq: 1550 kHz  
 BUNNELL, FL, US  
 Lat: 29-27-09 N  
 Lng: 081-17-21 W  
 Power: 0.52 kW  
 Theo RMS: 230.24 mV/m @ 1km

**EXHIBIT #1G5(j)**





### VERTICAL PLAN SKETCH

SITE ELEVATION - 3 m ( 10 ft) AMSL  
TOP OF STRUCTURE - 47 m ( 153 ft) AGL  
50 m ( 163 ft) AMSL  
AM Radiator - 46 m ( 150 ft)

FIGURES ROUNDED TO NEAREST METER (FOOT).

EXHIBIT #1H1 (a)  
MODIFY BNP-20010612ADD  
FLAG RADIO, INC.  
WAYI AM RADIO STATION  
1550 kHz - 0.52/9.5 kW DAN  
BUNNELL, FLORIDA  
December 2005

**GRAHAM BROCK, INC.**  
BROADCAST TECHNICAL CONSULTANTS



# Output from NADCON for station WAYI (NE Tower)

North American Datum Conversion

NAD 27 to NAD 83

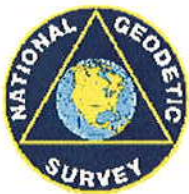
NADCON Program Version 2.11

=====

Transformation #: 1

Region: Conus

|                               | Latitude      | Longitude        |
|-------------------------------|---------------|------------------|
| NAD 27 datum values:          | 29 27 9.00000 | 81 17 20.00000   |
| NAD 83 datum values:          | 29 27 9.91086 | 81 17 19.23343   |
| NAD 83 - NAD 27 shift values: | 0.91086       | -0.76657 (secs.) |
|                               | 28.045        | -20.657 (meters) |
| Magnitude of total shift:     |               | 34.832 (meters)  |



[NGS HOME PAGE](#)

EXHIBIT #1H1 (b)  
MODIFY BNP-20010612ADO  
FLAG RADIO, INC.  
WAYI AM RADIO STATION  
1550 kHz - 0.52/9.5 kW DAN  
BUNNELL, FLORIDA  
December 2005

## TOWAIR Determination Results

A routine check of the coordinates, heights, and structure type you provided indicates that this structure does not require registration.

### \*\*\* NOTICE \*\*\*

TOWAIR's findings are not definitive or binding, and we cannot guarantee that the data in TOWAIR are fully current and accurate. In some instances, TOWAIR may yield results that differ from application of the criteria set out in 47 C.F.R. Section 17.7 and 14 C.F.R. Section 77.13. A positive finding by TOWAIR recommending notification should be given considerable weight. On the other hand, a finding by TOWAIR recommending either for or against notification is not conclusive. It is the responsibility of each ASR participant to exercise due diligence to determine if it must coordinate its structure with the FAA. TOWAIR is only one tool designed to assist ASR participants in exercising this due diligence, and further investigation may be necessary to determine if FAA coordination is appropriate.

#### DETERMINATION Results

**PASS SLOPE(100:1): NO FAA REQ-RWY MORE THAN 10499 MTRS & 7468.81 MTRS (7.46879 KM) AWAY**

| Type | C/R | Latitude     | Longitude     | Name           | Address             | Lowest Elevation (m) | Runway Length (m) |
|------|-----|--------------|---------------|----------------|---------------------|----------------------|-------------------|
| AIRP | R   | 29-27-39.00N | 081-12-44.00W | FLAGLER COUNTY | FLAGLER BUNNELL, FL | 6.7                  | 1524.0            |

**PASS SLOPE(100:1): NO FAA REQ-RWY MORE THAN 10499 MTRS & 7506.61 MTRS (7.50659 KM) AWAY**

| Type | C/R | Latitude     | Longitude     | Name           | Address             | Lowest Elevation (m) | Runway Length (m) |
|------|-----|--------------|---------------|----------------|---------------------|----------------------|-------------------|
| AIRP | R   | 29-28-19.00N | 081-12-52.00W | FLAGLER COUNTY | FLAGLER BUNNELL, FL | 6.7                  | 1524.0            |

#### Your Specifications

##### NAD83 Coordinates

|           |                  |
|-----------|------------------|
| Latitude  | 29-27-09.9 north |
| Longitude | 081-17-19.2 west |

##### Measurements (Meters)

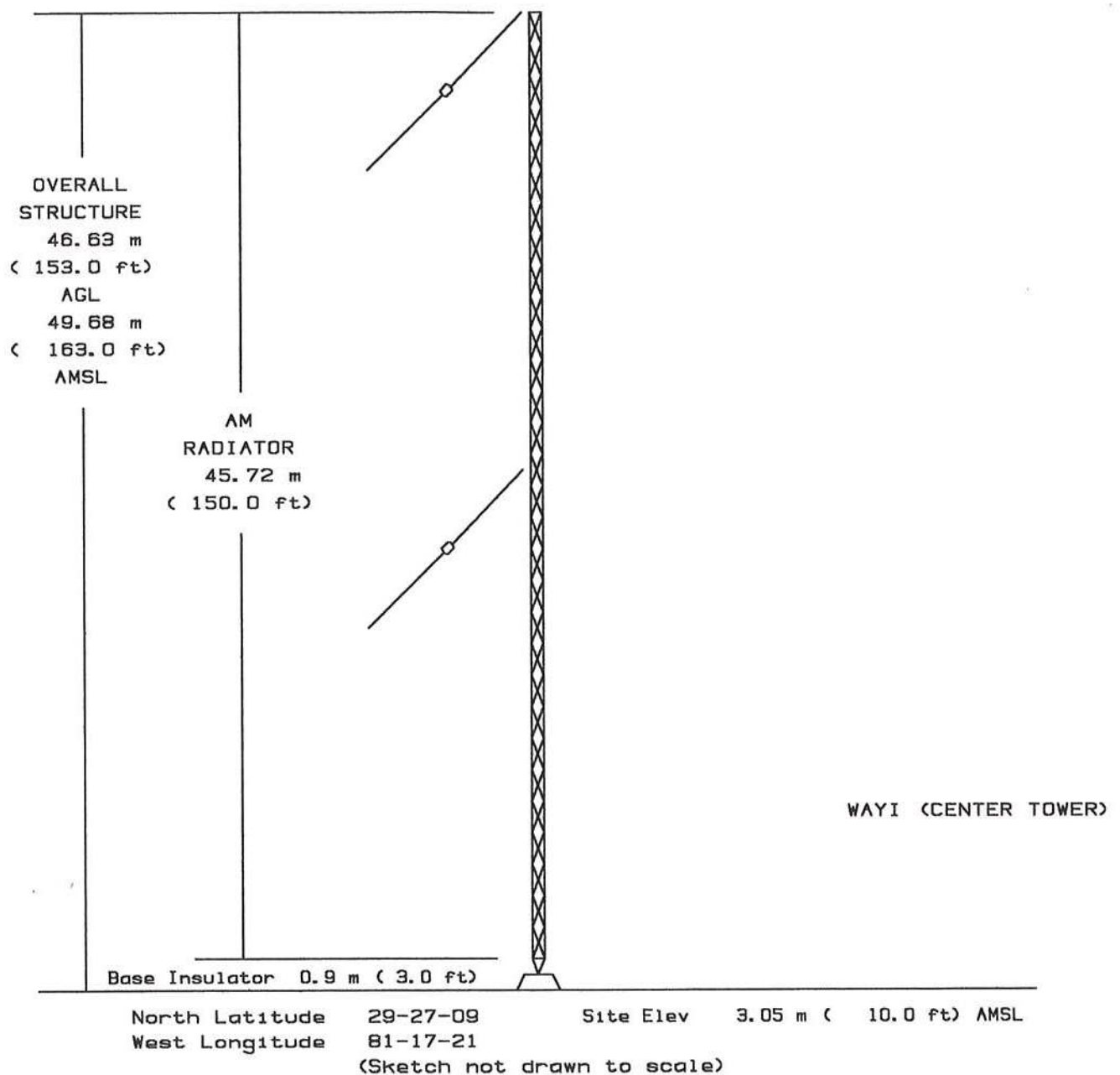
|                                |      |
|--------------------------------|------|
| Overall Structure Height (AGL) | 46.6 |
| Support Structure Height (AGL) | 46.6 |
| Site Elevation (AMSL)          | 3    |

##### Structure Type

TOWER - Free standing or Guyed Structure used for Commun

EXHIBIT #1H1 (c)  
MODIFY BNP-20010612ADO  
FLAG RADIO, INC.  
WAYI AM RADIO STATION  
1550 kHz - 0.52/9.5 kW DAN  
BUNNELL, FLORIDA  
December 2005





### VERTICAL PLAN SKETCH

SITE ELEVATION - 3 m ( 10 ft) AMSL  
TOP OF STRUCTURE - 47 m ( 153 ft) AGL  
50 m ( 163 ft) AMSL  
AM Radiator - 46 m ( 150 ft)

FIGURES ROUNDED TO NEAREST METER (FOOT).

EXHIBIT #1H2 (a)  
MODIFY BNP-20010612ADD  
FLAG RADIO, INC.  
WAYI AM RADIO STATION  
1550 kHz - 0.52/9.5 kW DAN  
BUNNELL, FLORIDA  
December 2005

**GRAHAM BROCK, INC.**  
BROADCAST TECHNICAL CONSULTANTS

# Output from NADCON for station WAYI (Center Tower)

North American Datum Conversion

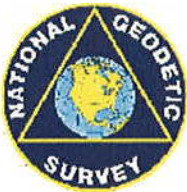
NAD 27 to NAD 83

NADCON Program Version 2.11

=====  
Transformation #: 1

Region: Conus

|                               | Latitude      | Longitude        |
|-------------------------------|---------------|------------------|
| NAD 27 datum values:          | 29 27 9.00000 | 81 17 21.00000   |
| NAD 83 datum values:          | 29 27 9.91085 | 81 17 20.23347   |
| NAD 83 - NAD 27 shift values: | 0.91085       | -0.76653 (secs.) |
|                               | 28.045        | -20.656 (meters) |
| Magnitude of total shift:     |               | 34.831 (meters)  |



[NGS HOME PAGE](#)

EXHIBIT #1H2 (b)  
MODIFY BNP-20010612ADD  
FLAG RADIO, INC.  
WAYI AM RADIO STATION  
1550 kHz - 0.52/9.5 kW DAN  
BUNNELL, FLORIDA  
December 2005



## TOWAIR Determination Results

A routine check of the coordinates, heights, and structure type you provided indicates that this structure does not require registration.

### \*\*\* NOTICE \*\*\*

TOWAIR's findings are not definitive or binding, and we cannot guarantee that the data in TOWAIR are fully current and accurate. In some instances, TOWAIR may yield results that differ from application of the criteria set out in 47 C.F.R. Section 17.7 and 14 C.F.R. Section 77.13. A positive finding by TOWAIR recommending notification should be given considerable weight. On the other hand, a finding by TOWAIR recommending either for or against notification is not conclusive. It is the responsibility of each ASR participant to exercise due diligence to determine if it must coordinate its structure with the FAA. TOWAIR is only one tool designed to assist ASR participants in exercising this due diligence, and further investigation may be necessary to determine if FAA coordination is appropriate.

#### DETERMINATION Results

**PASS SLOPE(100:1): NO FAA REQ-RWY MORE THAN 10499 MTRS & 7495.64 MTRS (7.49559 KM) AWAY**

| Type | C/R | Latitude     | Longitude     | Name           | Address             | Lowest Elevation (m) | Runway Length (m) |
|------|-----|--------------|---------------|----------------|---------------------|----------------------|-------------------|
| AIRP | R   | 29-27-39.00N | 081-12-44.00W | FLAGLER COUNTY | FLAGLER BUNNELL, FL | 6.7                  | 1524.0            |

**PASS SLOPE(100:1): NO FAA REQ-RWY MORE THAN 10499 MTRS & 7532.82 MTRS (7.53279 KM) AWAY**

| Type | C/R | Latitude     | Longitude     | Name           | Address             | Lowest Elevation (m) | Runway Length (m) |
|------|-----|--------------|---------------|----------------|---------------------|----------------------|-------------------|
| AIRP | R   | 29-28-19.00N | 081-12-52.00W | FLAGLER COUNTY | FLAGLER BUNNELL, FL | 6.7                  | 1524.0            |

#### Your Specifications

##### NAD83 Coordinates

|           |                  |
|-----------|------------------|
| Latitude  | 29-27-09.9 north |
| Longitude | 081-17-20.2 west |

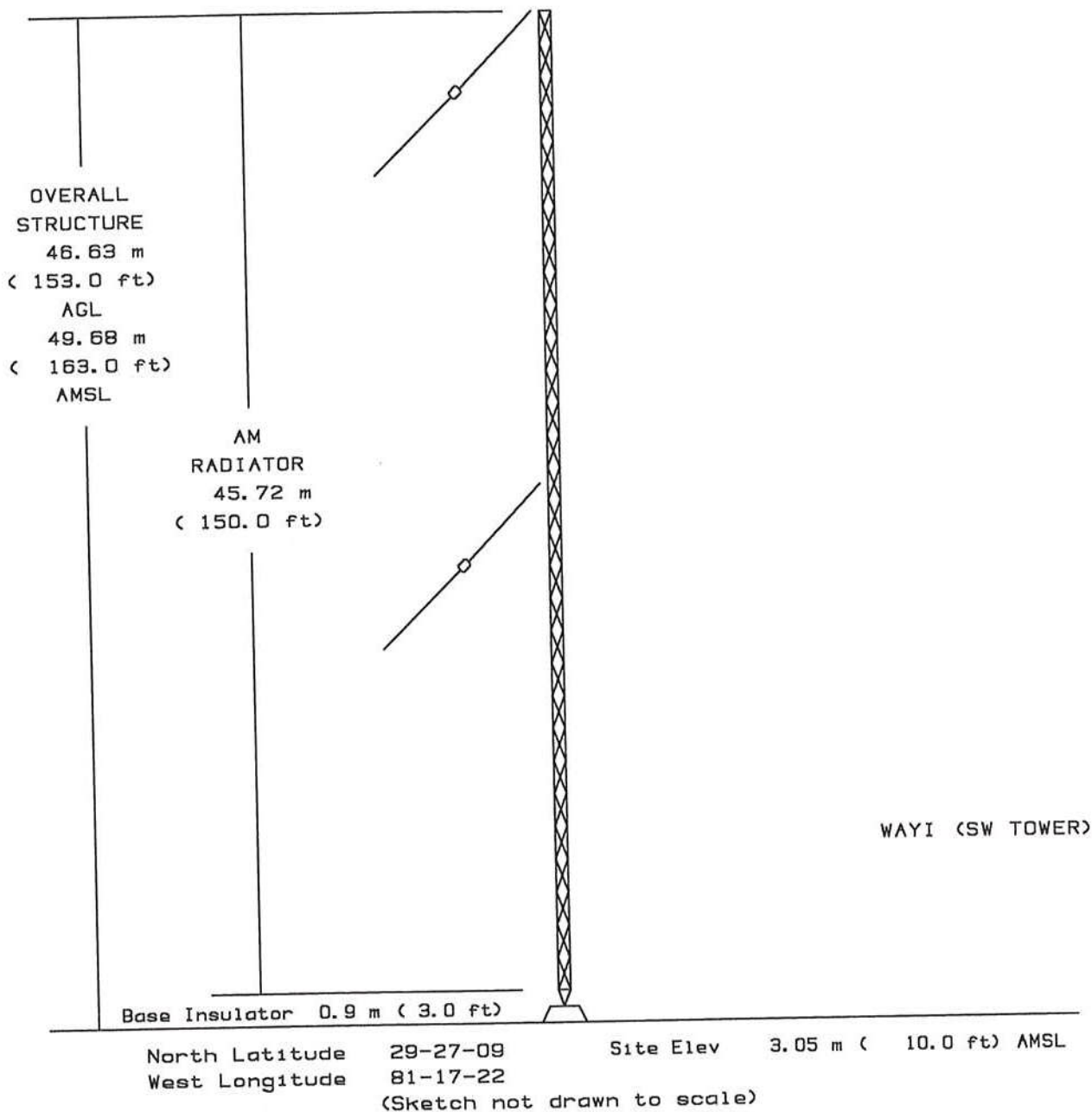
##### Measurements (Meters)

|                                |      |
|--------------------------------|------|
| Overall Structure Height (AGL) | 46.6 |
| Support Structure Height (AGL) | 46.6 |
| Site Elevation (AMSL)          | 3    |

##### Structure Type

TOWER - Free standing or Guyed Structure used for Commur

EXHIBIT #1H2(c)  
MODIFY BNP-20010612ADD  
FLAG RADIO, INC.  
WAYI AM RADIO STATION  
1550 kHz - 0.52/9.5 kW DAN  
BUNNELL, FLORIDA  
December 2005



### VERTICAL PLAN SKETCH

SITE ELEVATION - 3 m ( 10 ft) AMSL  
TOP OF STRUCTURE - 47 m ( 153 ft) AGL  
50 m ( 163 ft) AMSL  
AM Radiator - 46 m ( 150 ft)

FIGURES ROUNDED TO NEAREST METER (FOOT).

EXHIBIT #1H3 (a)  
MODIFY BNP-20010612ADD  
FLAG RADIO, INC.  
WAYI AM RADIO STATION  
1550 kHz - 0.52/9.5 kW DAN  
BUNNELL, FLORIDA  
December 2005

**GRAHAM BROCK, INC.**  
BROADCAST TECHNICAL CONSULTANTS



# Output from NADCON for station WAYI (SW Tower)

North American Datum Conversion

NAD 27 to NAD 83

NADCON Program Version 2.11

=====  
Transformation #: 1

Region: Conus

|                               | Latitude      | Longitude        |
|-------------------------------|---------------|------------------|
| NAD 27 datum values:          | 29 27 9.00000 | 81 17 22.00000   |
| NAD 83 datum values:          | 29 27 9.91084 | 81 17 21.23351   |
| NAD 83 - NAD 27 shift values: | 0.91084       | -0.76649 (secs.) |
|                               | 28.045        | -20.655 (meters) |
| Magnitude of total shift:     |               | 34.830 (meters)  |



[NGS HOME PAGE](#)

EXHIBIT #1H3 (b)  
MODIFY BNP-20010612ADO  
FLAG RADIO, INC.  
WAYI AM RADIO STATION  
1550 kHz - 0.52/9.5 kW DAN  
BUNNELL, FLORIDA  
December 2005

## TOWAIR Determination Results

A routine check of the coordinates, heights, and structure type you provided indicates that this structure does not require registration.

### \*\*\* NOTICE \*\*\*

TOWAIR's findings are not definitive or binding, and we cannot guarantee that the data in TOWAIR are fully current and accurate. In some instances, TOWAIR may yield results that differ from application of the criteria set out in 47 C.F.R. Section 17.7 and 14 C.F.R. Section 77.13. A positive finding by TOWAIR recommending notification should be given considerable weight. On the other hand, a finding by TOWAIR recommending either for or against notification is not conclusive. It is the responsibility of each ASR participant to exercise due diligence to determine if it must coordinate its structure with the FAA. TOWAIR is only one tool designed to assist ASR participants in exercising this due diligence, and further investigation may be necessary to determine if FAA coordination is appropriate.

#### DETERMINATION Results

**PASS SLOPE(100:1): NO FAA REQ-RWY MORE THAN 10499 MTRS & 7521.85 MTRS (7.52189 KM) AWAY**

| Type | C/R | Latitude     | Longitude     | Name           | Address             | Lowest Elevation (m) | Runway Length (m) |
|------|-----|--------------|---------------|----------------|---------------------|----------------------|-------------------|
| AIRP | R   | 29-27-39.00N | 081-12-44.00W | FLAGLER COUNTY | FLAGLER BUNNELL, FL | 6.7                  | 1524.0            |

**PASS SLOPE(100:1): NO FAA REQ-RWY MORE THAN 10499 MTRS & 7557.82 MTRS (7.55780 KM) AWAY**

| Type | C/R | Latitude     | Longitude     | Name           | Address             | Lowest Elevation (m) | Runway Length (m) |
|------|-----|--------------|---------------|----------------|---------------------|----------------------|-------------------|
| AIRP | R   | 29-28-19.00N | 081-12-52.00W | FLAGLER COUNTY | FLAGLER BUNNELL, FL | 6.7                  | 1524.0            |

#### Your Specifications

##### NAD83 Coordinates

|           |                  |
|-----------|------------------|
| Latitude  | 29-27-09.9 north |
| Longitude | 081-17-21.2 west |

##### Measurements (Meters)

|                                |      |
|--------------------------------|------|
| Overall Structure Height (AGL) | 46.6 |
| Support Structure Height (AGL) | 46.6 |
| Site Elevation (AMSL)          | 3    |

##### Structure Type

TOWER - Free standing or Guyed Structure used for Commun

EXHIBIT #1H3(c)  
MODIFY BNP-20010612ADO  
FLAG RADIO, INC.  
WAYI AM RADIO STATION  
1550 kHz - 0.52/9.5 kW DAN  
BUNNELL, FLORIDA  
December 2005



MODIFY BNP-20010612ADO  
FLAG RADIO, INC.  
WAYI AM RADIO STATION  
has: 1550 kHz - 0.20/9.3 kW - DAN  
req: 1550 kHz - 0.52/9.5 kW - DAN  
BUNNELL, FLORIDA  
December 2005

EXHIBIT #II

Property Plat and Ground System

Ground System of 120 buried radial wires, each 69.96 meters (200.0 feet) in length evenly distributed around the tower base. Interspersed between the full length radial wires are 120, buried radial wires, each 15 meters (50 feet) in length extending from the tower base.



MODIFY BNP-20010612ADO  
FLAG RADIO, INC.  
WAYI AM RADIO STATION  
has: 1550 kHz - 0.20/9.3 kW - DAN  
req: 1550 kHz - 0.52/9.5 kW - DAN  
BUNNELL, FLORIDA  
December 2005

EXHIBIT #1J(1)

Site Photos



North



Northeast



**MODIFY BNP-20010612ADO**  
**FLAG RADIO, INC.**  
**WAYI AM RADIO STATION**  
**has: 1550 kHz - 0.20/9.3 kW - DAN**  
**req: 1550 kHz - 0.52/9.5 kW - DAN**  
**BUNNELL, FLORIDA**  
**December 2005**

**EXHIBIT #1J(2)**

**Site Photos**



East



Southeast

MODIFY BNP-20010612ADO  
FLAG RADIO, INC.  
WAYI AM RADIO STATION  
has: 1550 kHz - 0.20/9.3 kW - DAN  
req: 1550 kHz - 0.52/9.5 kW - DAN  
BUNNELL, FLORIDA  
December 2005

EXHIBIT #1J(3)

Site Photos



South



Southwest



MODIFY BNP-20010612ADO  
FLAG RADIO, INC.  
WAYI AM RADIO STATION  
has: 1550 kHz - 0.20/9.3 kW - DAN  
req: 1550 kHz - 0.52/9.5 kW - DAN  
BUNNELL, FLORIDA  
December 2005

EXHIBIT #1J(4)

Site Photos



West



Northwest

| Call   | Service | City          | State | Chan. | Power      | Coordinates     | Dist-km | Azimuth | File Number         |
|--------|---------|---------------|-------|-------|------------|-----------------|---------|---------|---------------------|
| AM     | -----   | None Found    | ----- |       |            |                 |         |         |                     |
| FM     | -----   |               |       |       |            |                 |         |         |                     |
| AP258  | X       | Palm Coast    | FL    | 258D  | 0000.038kW | 293338N 811607W | 012.1   | 009.4   | BNPFT20030317DNN FM |
| AP224  | X       | Palm Coast    | FL    | 224D  | 0000.170kW | 293251N 811236W | 013.0   | 035.9   | BNPFT20030317K2G FM |
| AL254  | A       | Palm Coast    | FL    | 254A  | 0000.000kW | 292938N 810945W | 013.1   | 069.4   | RM10493 FM          |
| W274AR | X       | Palm Coast    | FL    | 274D  | 0000.038kW | 293255N 811231W | 013.2   | 036.1   | BNPFT20030828ABY FM |
| W247AJ | X       | Palm Coast    | FL    | 247D  | 0000.080kW | 293256N 811232W | 013.2   | 035.9   | BLFT19980311TF FM   |
| AP222  | X       | Palm Coast    | FL    | 222D  | 0000.038kW | 293256N 811231W | 013.2   | 036.0   | BNPFT20030314BWO FM |
| WJLH.A | M       | Flagler Beach | FL    | 212B1 | 0015.000kW | 292226N 811049W | 013.7   | 129.6   | BPED20010112AAA FM  |
| WEAZ   | M       | Holly Hill    | FL    | 201A  | 0004.200kW | 292226N 811049W | 013.7   | 129.6   | BMLED20010601ABN FM |
| WJLH   | M       | Flagler Beach | FL    | 212A  | 0002.000kW | 292226N 811049W | 013.7   | 129.6   | BLD19960618KB FM    |
| 990104 | M       | Beverly Beach | FL    | 216A  | 0001.300kW | 292803N 810838W | 014.2   | 083.2   | BPED19990104MA FM   |
| 981231 | M       | Favoretta     | FL    | 216A  | 0005.000kW | 292803N 810838W | 014.2   | 083.2   | BPED19981231MB FM   |
| 990104 | M       | Beverly Beach | FL    | 216A  | 0001.300kW | 292803N 810838W | 014.2   | 083.2   | BPED19990104MA FM   |
| 980610 | M       | Favorita      | FL    | 216A  | 0001.300kW | 292803N 810838W | 014.2   | 083.2   | BPED19980610MB FM   |
| 990104 | M       | Beverly Beach | FL    | 216A  | 0001.300kW | 292803N 810838W | 014.2   | 083.2   | BPED19990104MA FM   |
| 990104 | M       | Beverly Beach | FL    | 216A  | 0000.500kW | 292803N 810838W | 014.2   | 083.2   | BPED19990104MN FM   |
| 981231 | M       | Favoretta     | FL    | 216A  | 0001.300kW | 292803N 810838W | 014.2   | 083.2   | BPED19981231MB FM   |
| 990104 | M       | Beverly Beach | FL    | 216A  | 0000.500kW | 292803N 810838W | 014.2   | 083.2   | BPED19990104MN FM   |
| 990104 | M       | Favoretta     | FL    | 216A  | 0001.300kW | 292803N 810838W | 014.2   | 083.2   | BPED19990104MB FM   |
| 990104 | M       | Favoretta     | FL    | 216A  | 0002.100kW | 292944N 810808W | 015.6   | 072.1   | BPED19990104MB FM   |
| 990104 | M       | Palm Coast    | FL    | 216A  | 0002.100kW | 292944N 810808W | 015.6   | 072.1   | BPED19990104MP FM   |
| 990104 | M       | Palm Coast    | FL    | 216A  | 0002.100kW | 292944N 810808W | 015.6   | 072.1   | BPED19990104MP FM   |
| 990104 | M       | Palm Coast    | FL    | 216A  | 0002.100kW | 292944N 810808W | 015.6   | 072.1   | BPED19990104MP FM   |
| WFBO-L | L       | Flagler Beach | FL    | 227L1 | 0000.031kW | 292945N 810807W | 015.7   | 072.0   | BLL20050512AAA FM   |
| TV     | -----   | None Found    | ----- |       |            |                 |         |         |                     |