

LPFM Preclusion Study
Calvary Chapel Church
Regarding Facility ID 138845 Channel 263

LPFM Preclusion Study

138845 - Immokalee, FL

The applicant is filing its “long form” application in accordance with DA 13-1675. This instant application reflects minor technical modifications to its original 2003 “short form” filing which were in accordance with the appropriate public notices and filing procedures at those times. This Instant Application does not preclude an LPFM future applicant according to the December 2012 release of the FCC Grid Tool as shown below. This application is located outside the appropriate grid for the market.

This proposed site is located approximately 26.4 km from the closest point in the grid. This proposed site is located more than 39 km from the point for an available LPFM co-channel on the grid. This proposed site is located more than 28 km from the point for an available LPFM first adjacent channel on the grid. This proposed site is located more than 21 km from the point for an available LPFM second adjacent channel on the grid. Multiple channels are available for a future LPFM applicant within the grid and at the proposed site.¹

¹ The FCC Grid Tool shows placement of potential LPFM stations in the Atlantic Ocean and other such locations. These erroneous locations have been analyzed and dismissed accordingly.

Grid Analysis

Fort Myers, Florida

The following is a print out from the Grid Tool provided by the FCC^{2,3}.

ftmyers02,fl
 Latitude 26-36-25
 Longitude 081-52-21
 Grid Size 21 x 21
 Micro FM 100 Watts at 30m HAAT
 Co-Channel and 1st Adjacent Protected
 2nd Adjacent Channel Not Protected
 3rd Adjacent Channel Not Protected
 I.F. Not Protected
 TV Channel 6 Protected
 CP Records Protected
 APP Records Protected
 FM Translators Protected
 TV Channel 6 Translators/LP Protected
 Auc83 FX App Records Not Protected

Chan	Avail	Chan	Avail	Chan	Avail	Chan	Avail	Chan	Avail
200	0	220	0	240	0	260	0	280	0
201	0	221	0	241	0	261	0	281	0
202	0	222	0	242	0	262	0	282	418
203	0	223	0	243	1	263	0	283	0
204	0	224	0	244	0	264	76	284	0
205	0	225	0	245	0	265	0	285	0
206	0	226	0	246	0	266	0	286	13
207	0	227	341	247	164	267	0	287	0
208	0	228	0	248	0	268	158	288	0
209	0	229	0	249	0	269	0	289	0
210	0	230	0	250	0	270	0	290	212
211	0	231	113	251	14	271	0	291	0
212	0	232	0	252	0	272	0	292	0
213	378	233	0	253	0	273	0	293	0
214	0	234	0	254	0	274	0	294	31
215	0	235	341	255	0	275	0	295	0
216	0	236	0	256	0	276	0	296	0
217	0	237	0	257	0	277	47	297	0
218	0	238	0	258	0	278	226	298	441

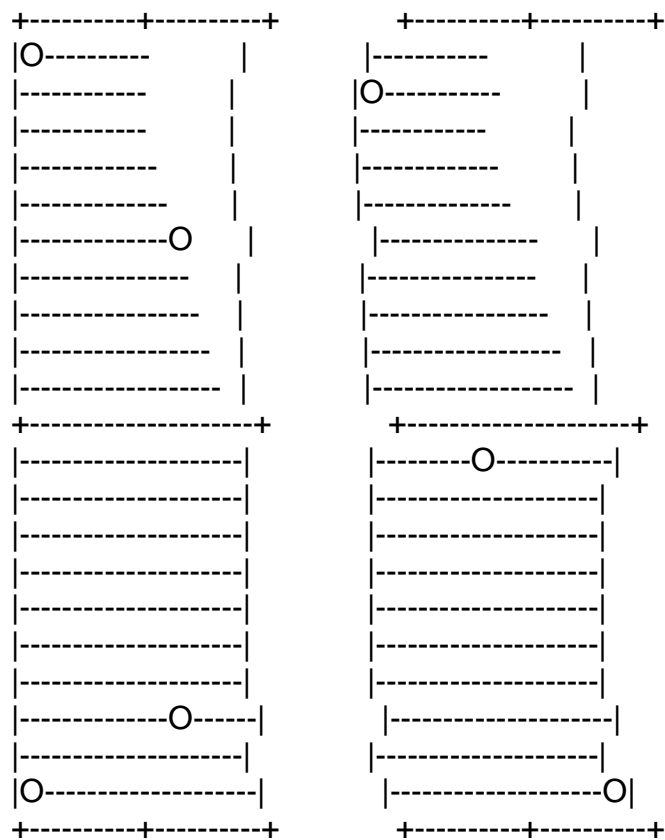
² DA 12-1987 - Released: December 10, 2012 - Media Bureau Releases Updated Low Power FM - Spectrum Availability Data Files – Latest public release as of this date.

³ The channel points shown available for an LPFM on channels 240 and 241 are actually located in the Atlantic Ocean and thus are not considered to be valid point locations for an LPFM and can not preclude an LPFM.

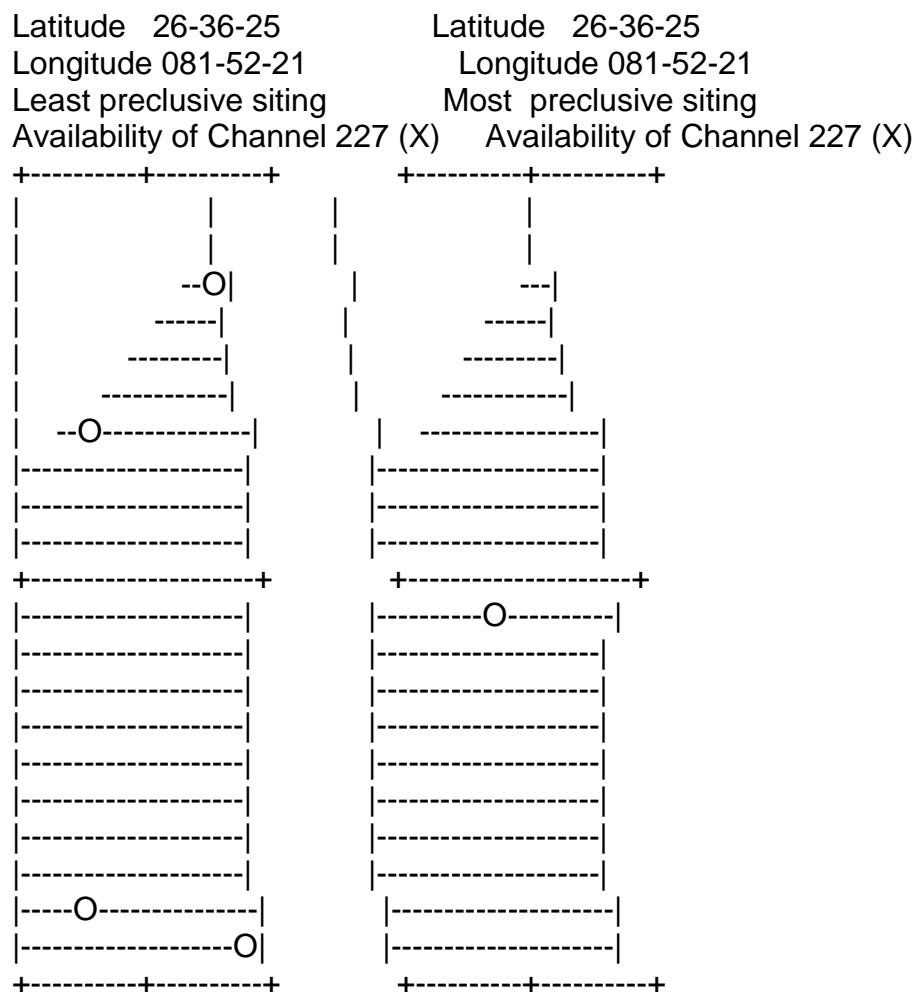
219 0 239 441 259 441 279 0 299 240
300 131

Total 4227

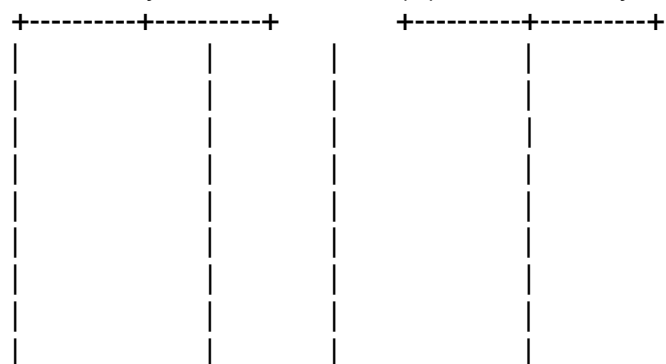
Total allotments, least preclusive spacing: 57
Total allotments, most preclusive spacing: 39
ftmyers02,fl ftmyers02,fl
Latitude 26-36-25 Latitude 26-36-25
Longitude 081-52-21 Longitude 081-52-21
Least preclusive siting Most preclusive siting
Availability of Channel 213 (X) Availability of Channel 213 (X)

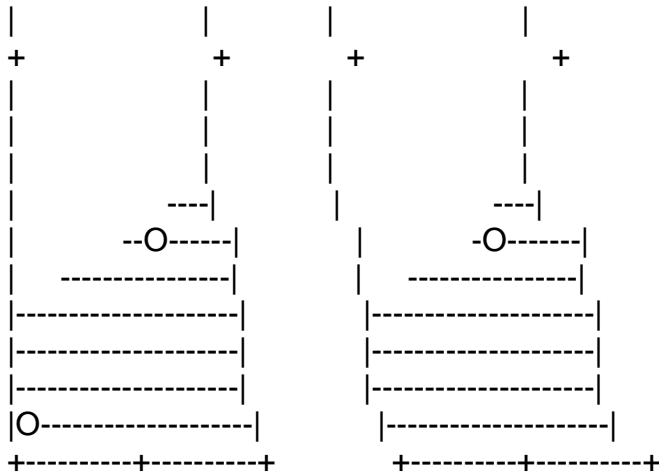


Point #441 at 26-46-25 082-02-21 Point #241 at 26-35-25 081-53-21
Point #421 at 26-26-25 082-02-21 Point #440 at 26-45-25 082-02-21
Point #142 at 26-41-25 081-48-21 Point #001 at 26-26-25 081-42-21
Point #129 at 26-28-25 081-48-21
ftmyers02,fl ftmyers02,fl



Point #019 at 26-44-25 081-42-21	Point #220 at 26-35-25 081-52-21
Point #001 at 26-26-25 081-42-21	
Point #309 at 26-40-25 081-56-21	
Point #317 at 26-27-25 081-57-21	
ftmyers02,fl	ftmyers02,fl
Latitude 26-36-25	Latitude 26-36-25
Longitude 081-52-21	Longitude 081-52-21
Least preclusive siting	Most preclusive siting
Availability of Channel 231 (X)	Availability of Channel 231 (X)





Point #421 at 26-26-25 082-02-21 Point #153 at 26-31-25 081-49-21

Point #132 at 26-31-25 081-48-21

ftmyers02,fl

ftmyers02,fl

Latitude 26-36-25

Latitude 26-36-25

Longitude 081-52-21

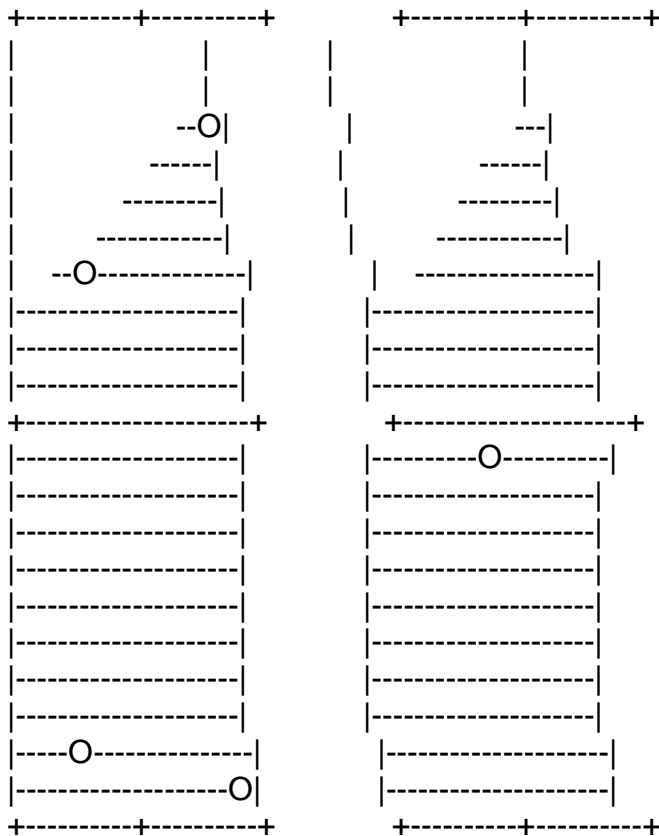
Longitude 081-52-21

Least preclusive siting

Most preclusive siting

Availability of Channel 235 (X)

Availability of Channel 235 (X)



Point #019 at 26-44-25 081-42-21 Point #220 at 26-35-25 081-52-21

Point #001 at 26-26-25 081-42-21

Point #309 at 26-40-25 081-56-21

Point #317 at 26-27-25 081-57-21

ftmyers02,fl

ftmyers02,fl

Latitude 26-36-25

Latitude 26-36-25

Longitude 081-52-21

Longitude 081-52-21

Least preclusive siting

Most preclusive siting

Availability of Channel 239 (X)

Availability of Channel 239 (X)

+-----+-----+

+-----+-----+

|--O-----O|

|--O-----O|

|-----|

|-----|

|-----|

|-----|

|-----|

|-----|

|-----|

|-----|

|-----|

|-----|

|-----|

|-----|

|-----|

|-----|

|-----|

|-----|

|-----|

|-----|

+-----O-----+

+-----O-----+

|-----|

|-----|

|-----|

|-----|

|-----|

|-----|

|-----|

|-----|

|-----|

|-----|

|-----|

|-----|

|-----|

|-----|

|-----|

|-----|

|-----|

|-----|

|O-----O|

|--O-----O|

+-----+-----+

+-----+-----+

Point #001 at 26-26-25 081-42-21

Point #221 at 26-36-25 081-52-21

Point #421 at 26-26-25 082-02-21

Point #022 at 26-26-25 081-43-21

Point #021 at 26-46-25 081-42-21

Point #042 at 26-46-25 081-43-21

Point #200 at 26-36-25 081-51-21

Point #400 at 26-26-25 082-01-21

Point #399 at 26-46-25 082-00-21

Point #420 at 26-46-25 082-01-21

ftmyers02,fl

ftmyers02,fl

Latitude 26-36-25

Latitude 26-36-25

Longitude 081-52-21

Longitude 081-52-21

Least preclusive siting

Most preclusive siting

Availability of Channel 243 (X)

Availability of Channel 243 (X)

+-----+-----+

+-----+-----+

|

|

|

|

|

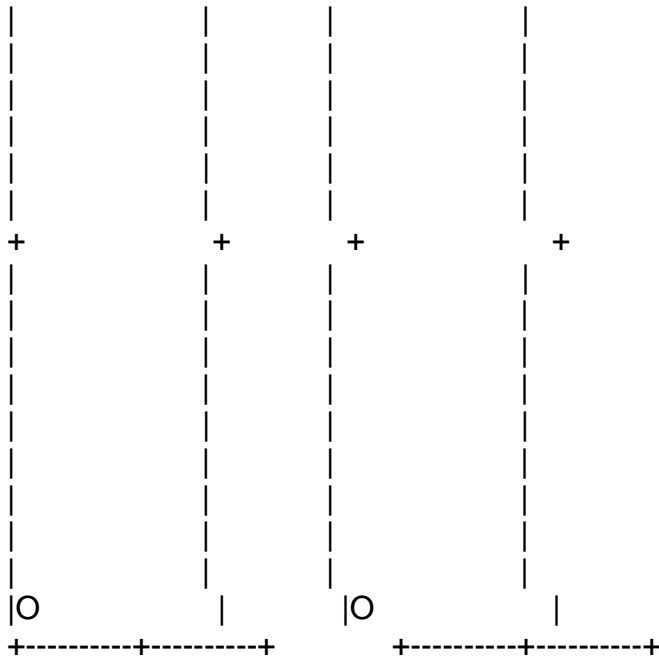
|

|

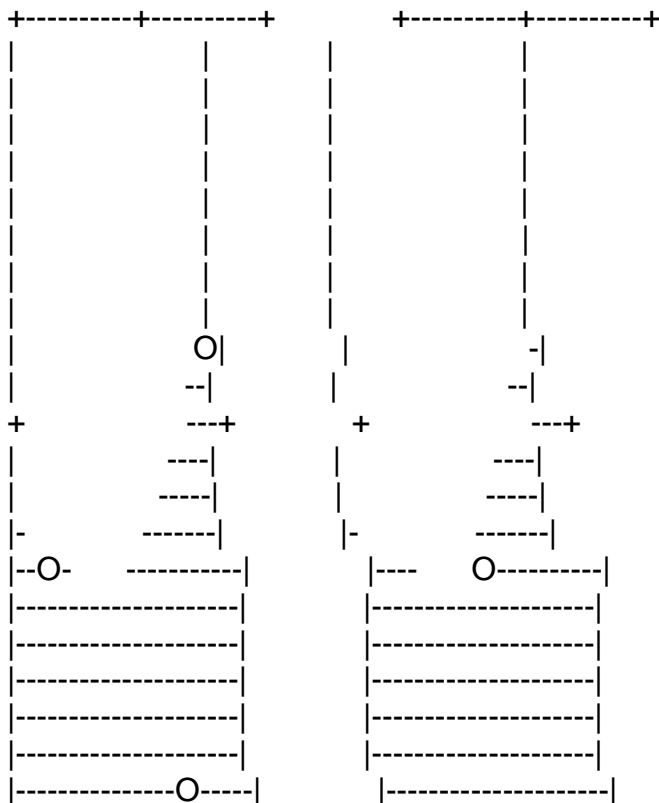
|

|

|



Point #421 at 26-26-25 082-02-21	Point #421 at 26-26-25 082-02-21
ftmyers02,fl	ftmyers02,fl
Latitude 26-36-25	Latitude 26-36-25
Longitude 081-52-21	Longitude 081-52-21
Least preclusive siting	Most preclusive siting
Availability of Channel 247 (X)	Availability of Channel 247 (X)



+-----+-----+

+-----+-----+

Point #013 at 26-38-25 081-42-21 Point #217 at 26-32-25 081-52-21

Point #106 at 26-26-25 081-47-21

Point #385 at 26-32-25 082-00-21

ftmyers02,fl

ftmyers02,fl

Latitude 26-36-25

Latitude 26-36-25

Longitude 081-52-21

Longitude 081-52-21

Least preclusive siting

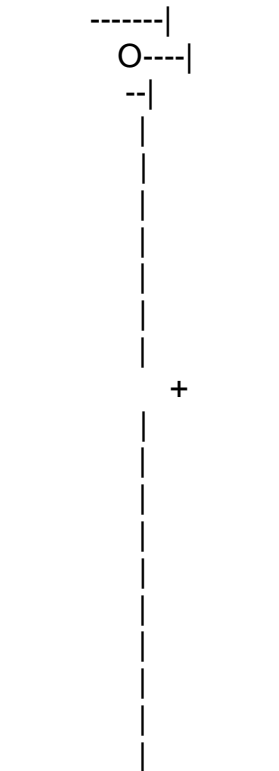
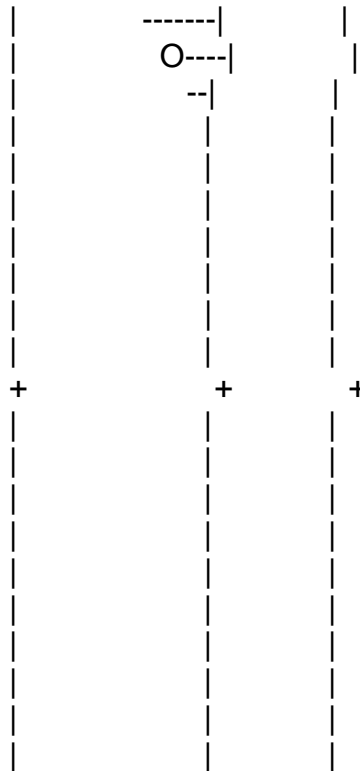
Most preclusive siting

Availability of Channel 251 (X)

Availability of Channel 251 (X)

+-----+-----+

+-----+-----+



+-----+-----+

+-----+-----+

Point #104 at 26-45-25 081-46-21 Point #104 at 26-45-25 081-46-21

ftmyers02,fl

ftmyers02,fl

Latitude 26-36-25

Latitude 26-36-25

Longitude 081-52-21

Longitude 081-52-21

Least preclusive siting

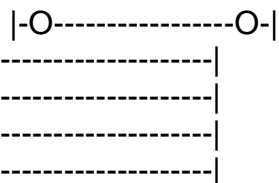
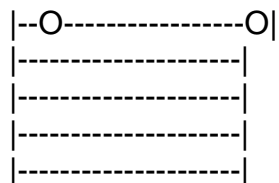
Most preclusive siting

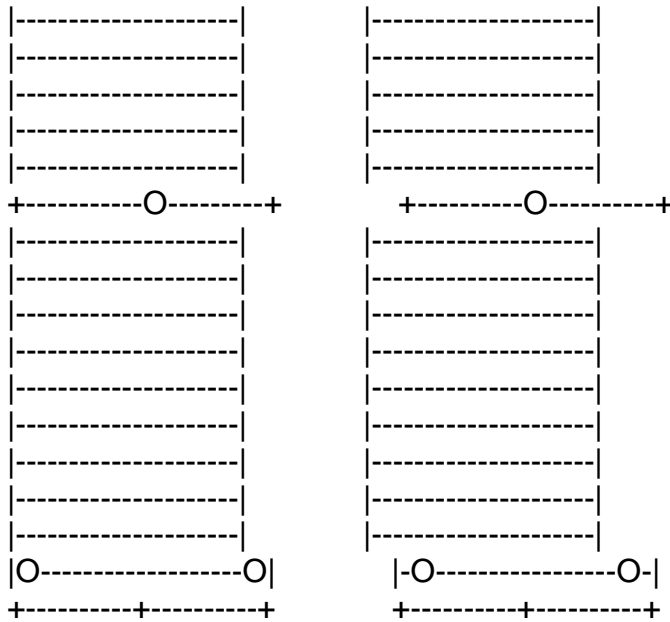
Availability of Channel 259 (X)

Availability of Channel 259 (X)

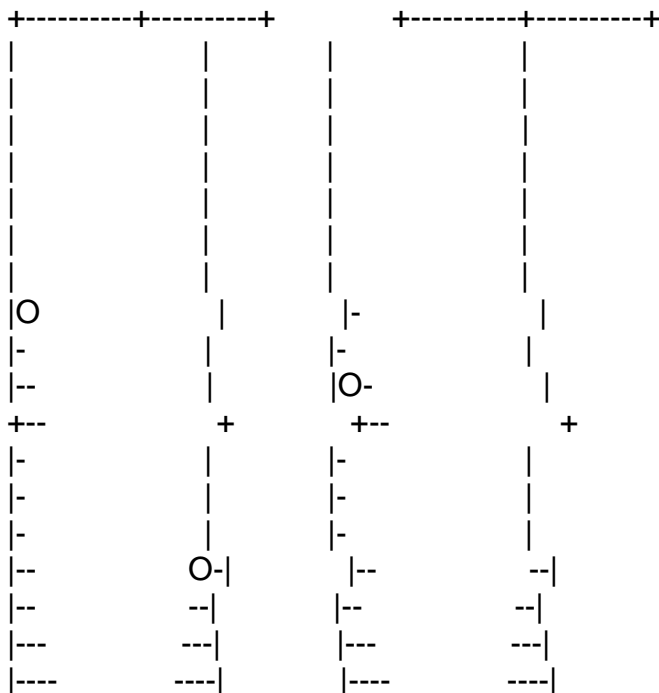
+-----+-----+

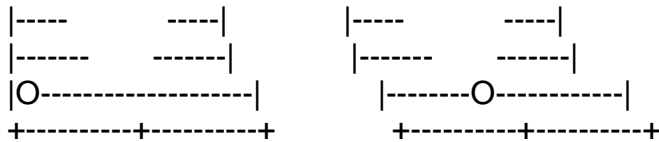
+-----+-----+





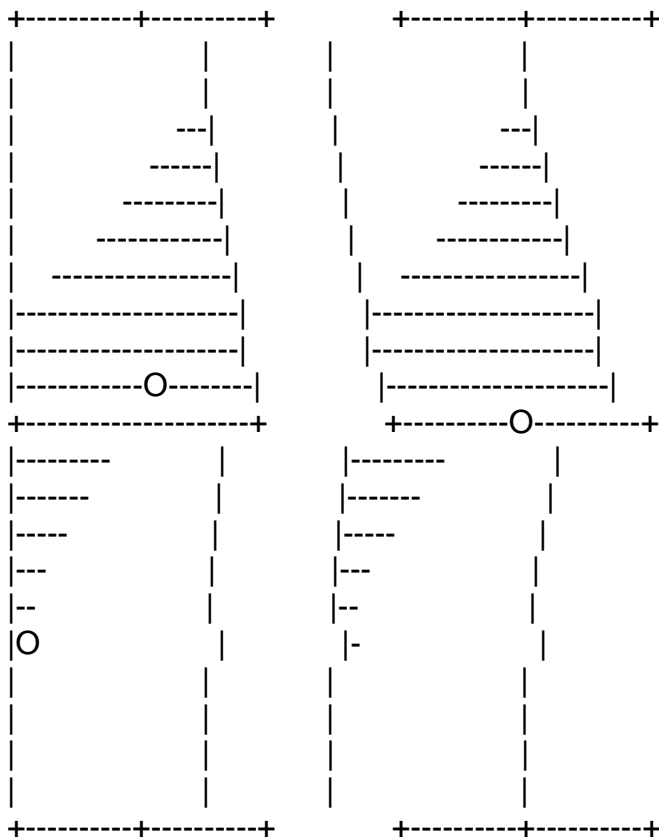
Point #001 at 26-26-25 081-42-21	Point #221 at 26-36-25 081-52-21
Point #421 at 26-26-25 082-02-21	Point #022 at 26-26-25 081-43-21
Point #021 at 26-46-25 081-42-21	Point #042 at 26-46-25 081-43-21
Point #200 at 26-36-25 081-51-21	Point #400 at 26-26-25 082-01-21
Point #399 at 26-46-25 082-00-21	Point #420 at 26-46-25 082-01-21
ftmyers02,fl	ftmyers02,fl
Latitude 26-36-25	Latitude 26-36-25
Longitude 081-52-21	Longitude 081-52-21
Least preclusive siting	Most preclusive siting
Availability of Channel 264 (X)	Availability of Channel 264 (X)





Point #434 at 26-39-25 082-02-21 Point #253 at 26-26-25 081-54-21
 Point #421 at 26-26-25 082-02-21 Point #432 at 26-37-25 082-02-21
 Point #028 at 26-32-25 081-43-21

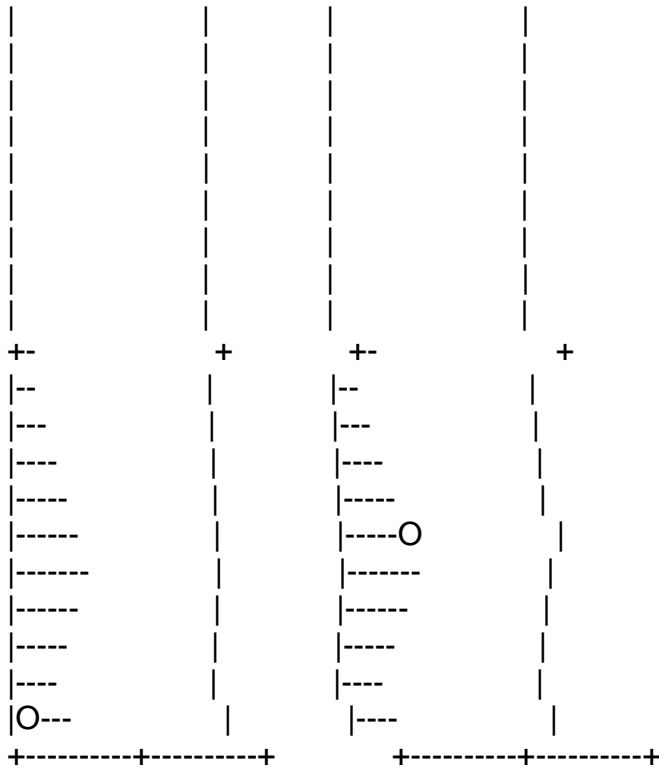
ftmyers02,fl ftmyers02,fl
 Latitude 26-36-25 Latitude 26-36-25
 Longitude 081-52-21 Longitude 081-52-21
 Least preclusive siting Most preclusive siting
 Availability of Channel 268 (X) Availability of Channel 268 (X)



Point #425 at 26-30-25 082-02-21 Point #221 at 26-36-25 081-52-21
 Point #180 at 26-37-25 081-50-21

ftmyers02,fl ftmyers02,fl
 Latitude 26-36-25 Latitude 26-36-25
 Longitude 081-52-21 Longitude 081-52-21
 Least preclusive siting Most preclusive siting
 Availability of Channel 277 (X) Availability of Channel 277 (X)





Point #421 at 26-26-25 082-02-21 Point #321 at 26-31-25 081-57-21
ftmyers02,fl ftmyers02,fl

Latitude 26-36-25

Latitude 26-36-25

Longitude 081-52-21

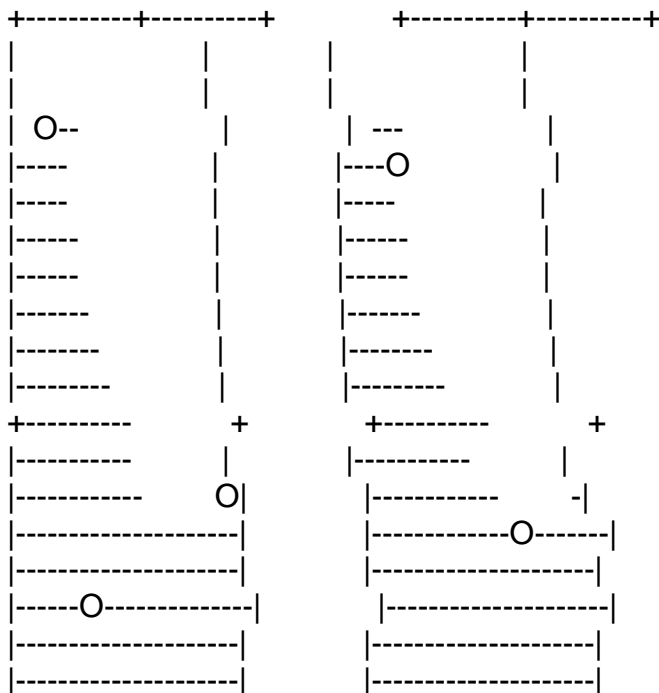
Longitude 081-52-21

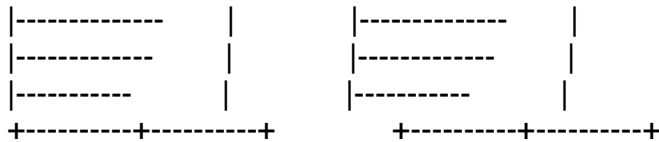
Least preclusive siting

Most preclusive siting

Availability of Channel 278 (X)

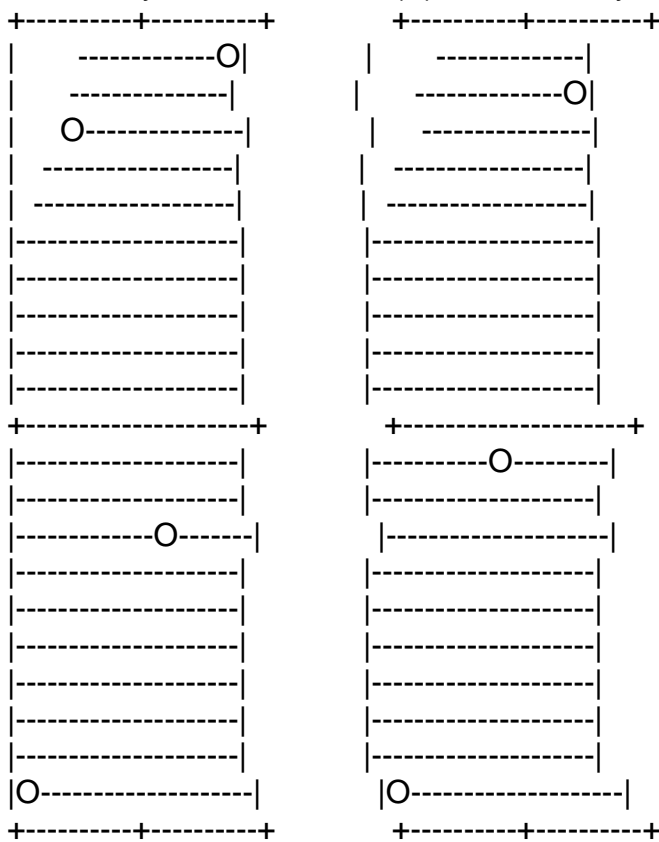
Availability of Channel 278 (X)





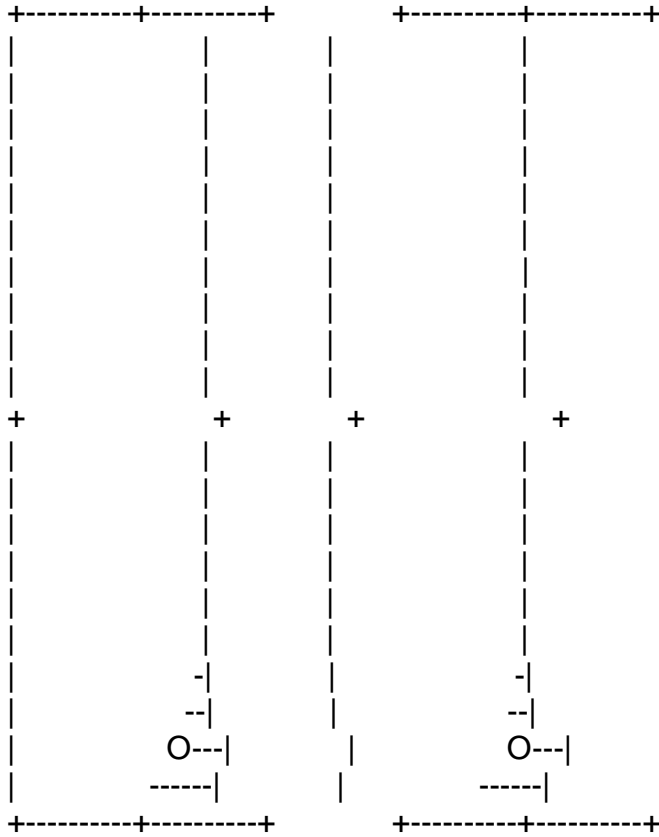
Point #397 at 26-44-25 082-00-21 Point #155 at 26-33-25 081-49-21
 Point #300 at 26-31-25 081-56-21 Point #354 at 26-43-25 081-58-21
 Point #009 at 26-34-25 081-42-21

ftmyers02,fl ftmyers02,fl
 Latitude 26-36-25 Latitude 26-36-25
 Longitude 081-52-21 Longitude 081-52-21
 Least preclusive siting Most preclusive siting
 Availability of Channel 282 (X) Availability of Channel 282 (X)

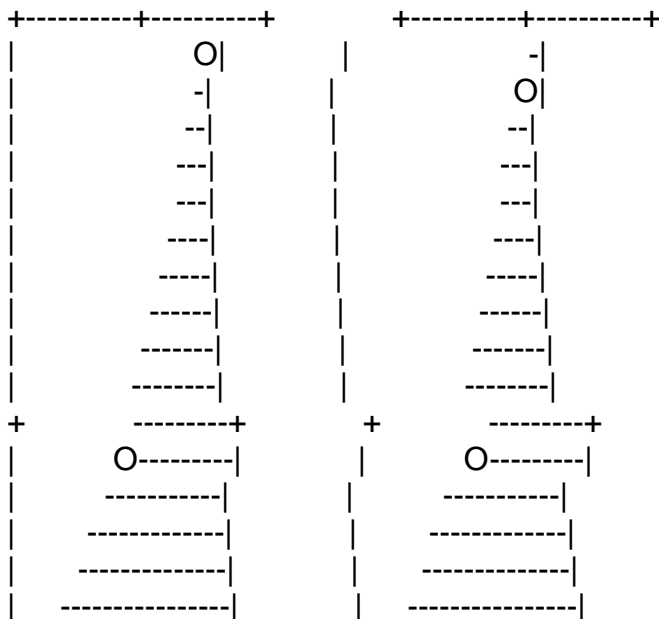


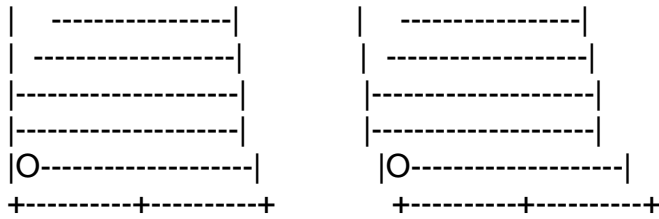
Point #021 at 26-46-25 081-42-21 Point #199 at 26-35-25 081-51-21
 Point #334 at 26-44-25 081-57-21 Point #020 at 26-45-25 081-42-21
 Point #421 at 26-26-25 082-02-21 Point #421 at 26-26-25 082-02-21
 Point #155 at 26-33-25 081-49-21

ftmyers02,fl ftmyers02,fl
 Latitude 26-36-25 Latitude 26-36-25
 Longitude 081-52-21 Longitude 081-52-21
 Least preclusive siting Most preclusive siting
 Availability of Channel 286 (X) Availability of Channel 286 (X)

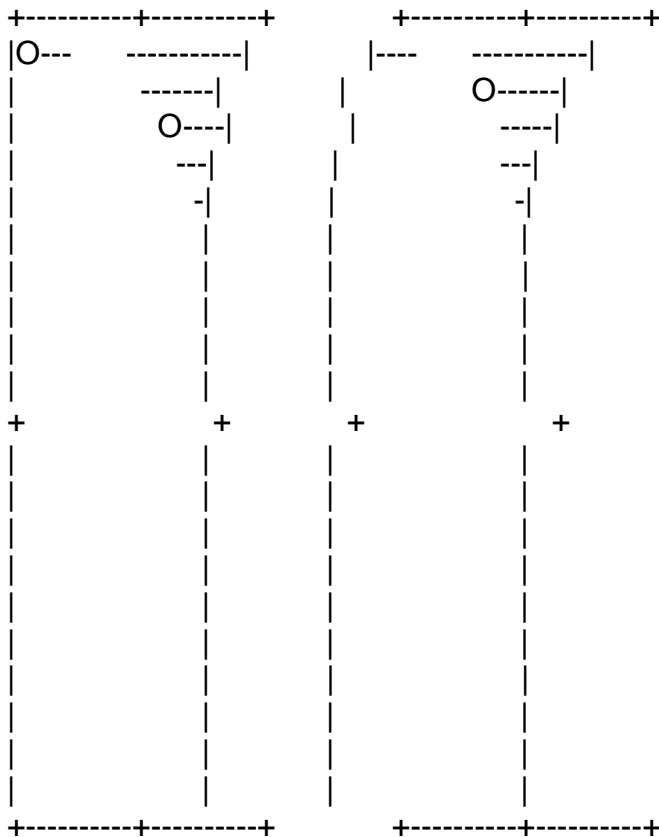


Point #065 at 26-27-25 081-45-21 Point #065 at 26-27-25 081-45-21
ftmyers02,fl ftmyers02,fl
Latitude 26-36-25 Latitude 26-36-25
Longitude 081-52-21 Longitude 081-52-21
Least preclusive siting Most preclusive siting
Availability of Channel 290 (X) Availability of Channel 290 (X)

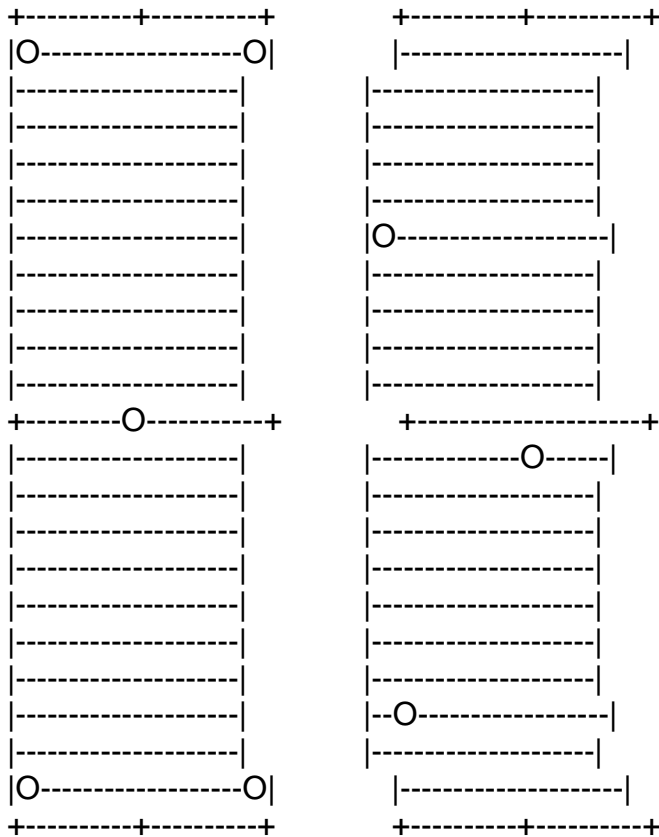




Point #021 at 26-46-25 081-42-21	Point #199 at 26-35-25 081-51-21
Point #421 at 26-26-25 082-02-21	Point #020 at 26-45-25 081-42-21
Point #199 at 26-35-25 081-51-21	Point #421 at 26-26-25 082-02-21
ftmyers02,fl	ftmyers02,fl
Latitude 26-36-25	Latitude 26-36-25
Longitude 081-52-21	Longitude 081-52-21
Least preclusive siting	Most preclusive siting
Availability of Channel 294 (X)	Availability of Channel 294 (X)



Point #441 at 26-46-25 082-02-21	Point #146 at 26-45-25 081-48-21
Point #103 at 26-44-25 081-46-21	
ftmyers02,fl	ftmyers02,fl
Latitude 26-36-25	Latitude 26-36-25
Longitude 081-52-21	Longitude 081-52-21
Least preclusive siting	Most preclusive siting
Availability of Channel 298 (X)	Availability of Channel 298 (X)



Point #001 at 26-26-25 081-42-21 Point #136 at 26-35-25 081-48-21
 Point #421 at 26-26-25 082-02-21 Point #436 at 26-41-25 082-02-21
 Point #021 at 26-46-25 081-42-21 Point #381 at 26-28-25 082-00-21
 Point #242 at 26-36-25 081-53-21
 Point #441 at 26-46-25 082-02-21

ftmyers02,fl

ftmyers02,fl

Latitude 26-36-25

Latitude 26-36-25

Longitude 081-52-21

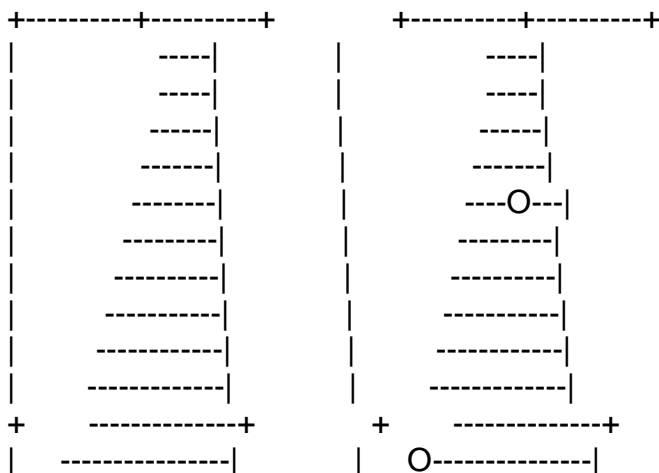
Longitude 081-52-21

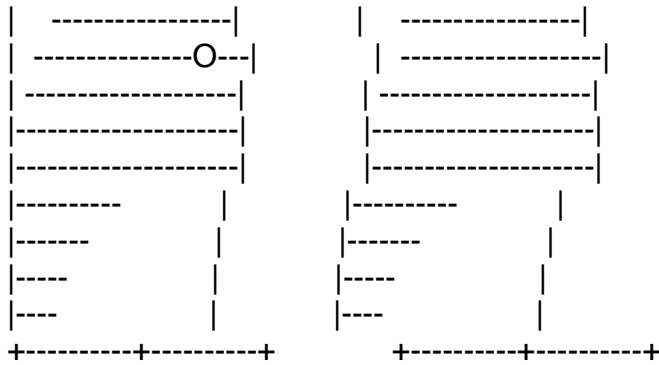
Least preclusive siting

Most preclusive siting

Availability of Channel 299 (X)

Availability of Channel 299 (X)





Point #071 at 26-33-25 081-45-21 Point #325 at 26-35-25 081-57-21

Point #080 at 26-42-25 081-45-21

ftmyers02,fl

ftmyers02,fl

Latitude 26-36-25

Latitude 26-36-25

Longitude 081-52-21

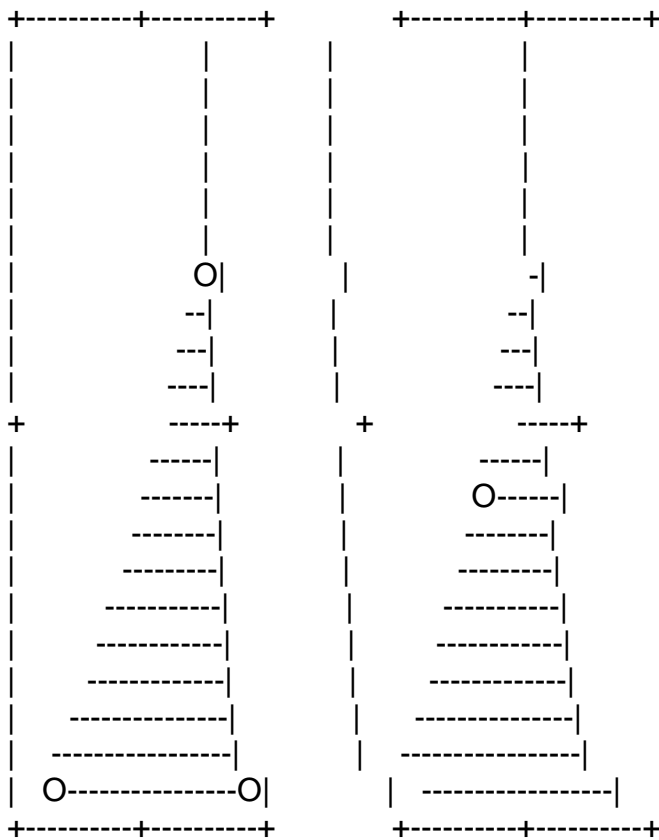
Longitude 081-52-21

Least preclusive siting

Most preclusive siting

Availability of Channel 300 (X)

Availability of Channel 300 (X)



Point #358 at 26-26-25 081-59-21 Point #135 at 26-34-25 081-48-21

Point #001 at 26-26-25 081-42-21

Point #015 at 26-40-25 081-42-21