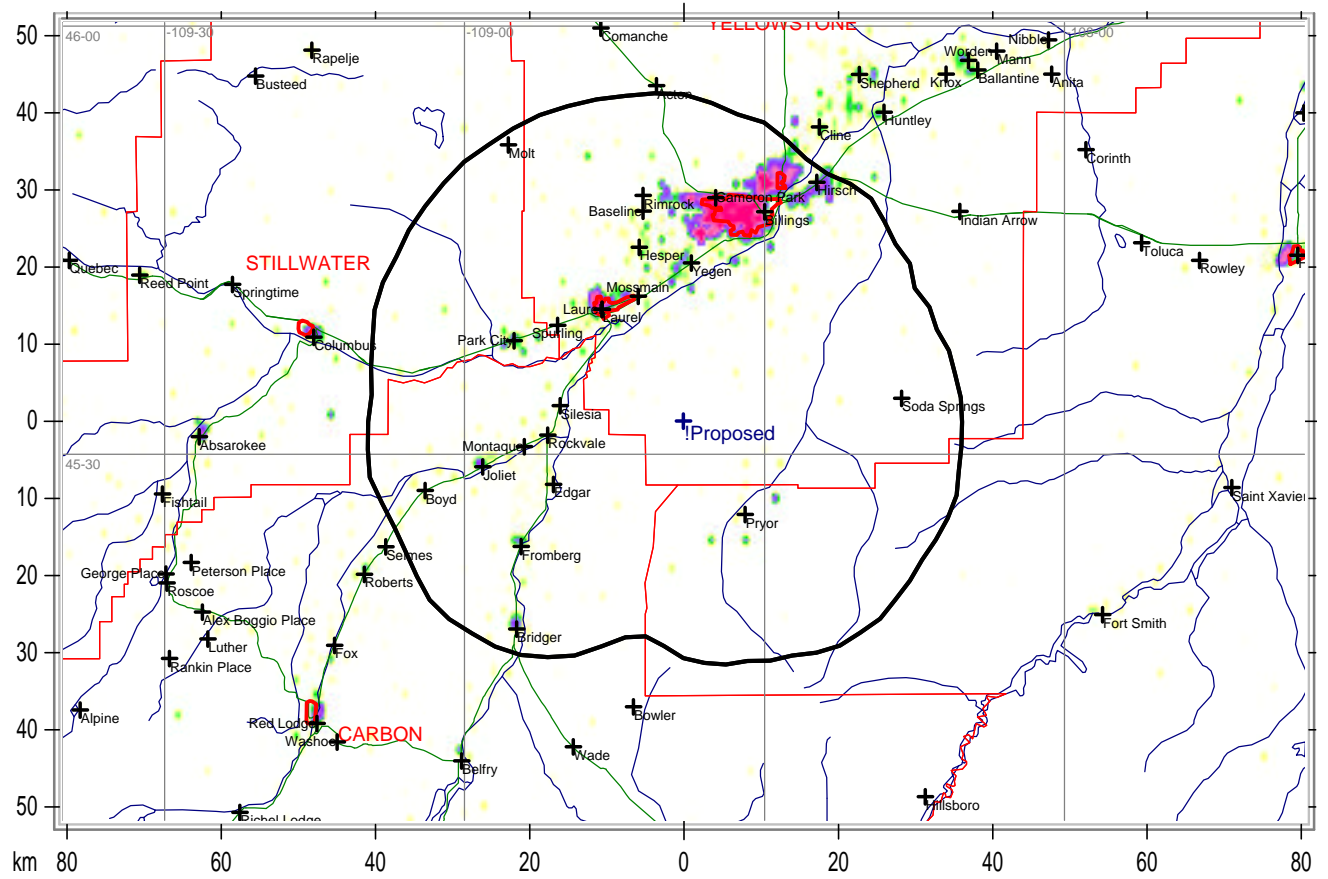
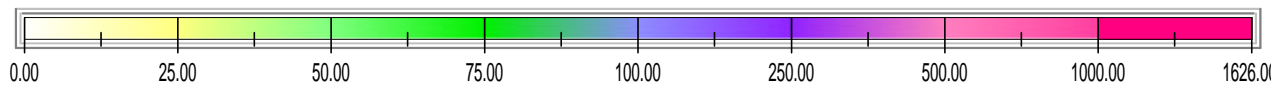


Map Header



Map Footer



- County Borders
- State Borders
- City Borders
- Highways
- Water Features
- Lat/Lon Grid

Lockwood, MT

Lockwood, MT has a population of 4,306, and is the largest unincorporated urbanized area in Yellowstone County. Located east of Billings and west of Hirsch, it is situated along Interstate 90 just east of where it crosses the Yellowstone River. The area encompasses approximately 8.1 square miles. Lockwood lies within the Yellowstone County Zoning Jurisdiction and is considered a small rural town.