

Channel Study															
REFERENCE		CH#	Proposed FMT 221 Estes Park						DISPLAY DATES						
40 25 13 N		221D	-	92.1	MHz,	Pwr=	0.015	kW,	HAAT=	0.0	M,	COR=	2740	M	DATA 07-19-03
105 26 39 W		Average Protected F(50-50)= 3.48 km										SEARCH 08-09-03			
		Ave.	F(50-10)	40	dBu=	11.2	54	dBu=	4.9	80	dBu=	1.6	100	dBu=	.3
CH	CALL	TYPE	STATE	AZI	DIST	LAT	Pwr(kW)	COR(M)	PRO(km)	*IN*	*OUT*				
CITY				<--	FILE #	LNG.	HAAT(M)	INT(km)	LICENSEE	(Overlap in km)					
221D	AP221	APP	DE	0.0	0.00	40 25 13	0.015	2740	10.0	-35.97*<	-18.89*<				
Estes Park		CO		180.0	BNPFT20030313A0E	105 26 39	237	8.9	Educational	Communications					
221D	AP221	APP	DE	69.9	23.74	40 29 36	0.000	2078	0.0	23.10	18.22				
Windsor		CO		249.9	BNPFT20030312ADP	105 10 52	84	5.5	Educational	Communications					
221D	AP221	APP	DE	121.3	38.56	40 14 24	0.000	1637	0.0	37.48	30.82				
Lafayette		CO		301.3	BNPFT20030312ACN	105 03 23	22	7.7	Educational	Communications					
223C1	ALLO	USE		141.9	51.64	40 03 15	100.000	0	31.0	41.80	20.57				
Broomfield		CO		321.9		105 04 12	-1544	0.1							
8/29/01: From Channel 223C1, Greeley, CO to Channel 223C1 Broomfield, CO pursuant to MM Docket 99-279.															
218C1	KUNCFM	LIC	CN	64.7	58.46	40 38 34	100.000	1736	62.3	49.51	-3.81*<				
Greeley		CO		244.7	BLED19840203AN	104 49 08	184	0.0	Community Radio For Northe						
218C1	KUNCFM	CP	CX	64.8	58.53	40 38 31	81.000	1769	63.4	49.34	-4.85*<				
Greeley		CO		244.8	BPED20020207ABE	104 49 03	217	0.0	Community Radio For Northe						
223C1	KDJM	LIC	DEN	127.8	58.55	40 05 47	14.757	1895	59.9	50.01	-1.35*<				
Broomfield		CO		307.8	BLH20010501AAA	104 54 04	398	0.0	Infinity Radio Operations						
221D	AP221	APP	C	94.9	52.16	40 22 42	0.010	1563	5.0	35.78	44.57				
Elm		CO		274.9	BNPFT20030317AZM	104 49 56	75	2.6	Horizon Christian Fellowsh						
224D	K224AD	LIC	CN	0.0	0.00	40 25 13	0.018	2743	10.5	-3.05*<	-10.56*<				
Estes Park, Etc.		CO		180.0	BLFT77	105 26 39	240	0.1	Syncom Media Group, Inc.						
TRANSLATOR FOR KVOD, DENVER, CO.															
221D	AP221	APP	DC	224.8	59.48	40 02 24	0.250	2530	7.1	31.48	36.54				
Granby		CO		44.8	BNPFT20030313A0W	105 56 11	-56	15.8	Educational	Communications					
220C	KUWR	LIC	CN	359.5	98.81	41 18 36	100.000	2739	56.0	10.67	39.02				
Laramie		WY		179.5	BLED19941031KW	105 27 17	132	3.8	University Of Wyoming						
221D	AP221	APP	DE	93.1	60.54	40 23 19	0.000	1528	0.0	60.27	57.97				
Eaton		CO		273.1	BNPFT20030312AWY	104 43 56	20	2.6	Educational	Communications					
221C2	ALLO	USE		168.0	114.01	39 24 57	50.000	0	26.5	-10.28<	56.73				
Castle Rock		CO		348.0		105 10 02	-2273	30.8							
221D	AP221	APP	DC	243.5	88.04	40 03 50	0.005	2298	2.7	78.91	80.81				
Kremmling		CO		63.5	BNPFT20030313ALX	106 22 06	-158	4.5	Educational	Communications					
221C2	KJMN	LIC	NCN	148.5	129.91	39 25 15	33.000	2132	55.7	-15.11<	49.49				
Castle Rock		CO		328.5	BLH19950929KE	104 39 15	225	24.7	Entravision Holdings, LLC						
221D	AP221	APP	DC	206.0	114.19	39 29 44	0.023	3225	11.0	70.25	78.87				
Breckenridge		CO		26.0	BNPFT20030313AMF	106 01 44	234	24.3	Educational	Communications					

\*\*\*Affixed to 'IN' or 'Out' values = site inside protected contour.  
 ERP and HAAT are on direct line to and from reference station.  
 "<" = Station meets FCC minimum distance spacing for its class. "<" = Contour Overlap

Terrain and Contour Study

N. Lat. = 40 25 13 W. Lng. = 105 26 39

HAAT and Distance to Contour - FCC Method - 03 Arc. Sec.

Azi.	AV EL	HAAT	ERP kW	dBk	Field	60-F5	100-F1
000	2678.7	61.3	0.0008	-30.93	0.232	2.45	0.06
030	2478.5	261.5	0.0004	-34.21	0.159	3.37	0.04
060	2280.5	459.5	0.0000	-43.95	0.052	1.41	0.01
090	2111.2	628.8	0.0000	-58.24	0.010	0.27	0.00
120	2281.0	459.0	0.0000	-46.69	0.038	1.03	0.01
150	2503.9	236.1	0.0055	-22.59	0.606	7.62	0.16
180	2505.3	234.7	0.0148	-18.29	0.994	9.90	0.27
210	2449.6	290.4	0.0047	-23.30	0.558	8.09	0.15
240	2405.2	334.8	0.0000	-49.30	0.028	0.76	0.01
270	2795.3	-55.3	0.0000	-58.24	0.010	0.27	0.00
300	2886.0	-146.0	0.0001	-42.79	0.059	1.61	0.02
330	2788.4	-48.4	0.0004	-33.89	0.165	1.61	0.04

Ave El= 2513.64 M HAAT= 226.36 M AMSL= 2740

Channel Study  
Proposed FMT 221 Estes Park vs KJMN

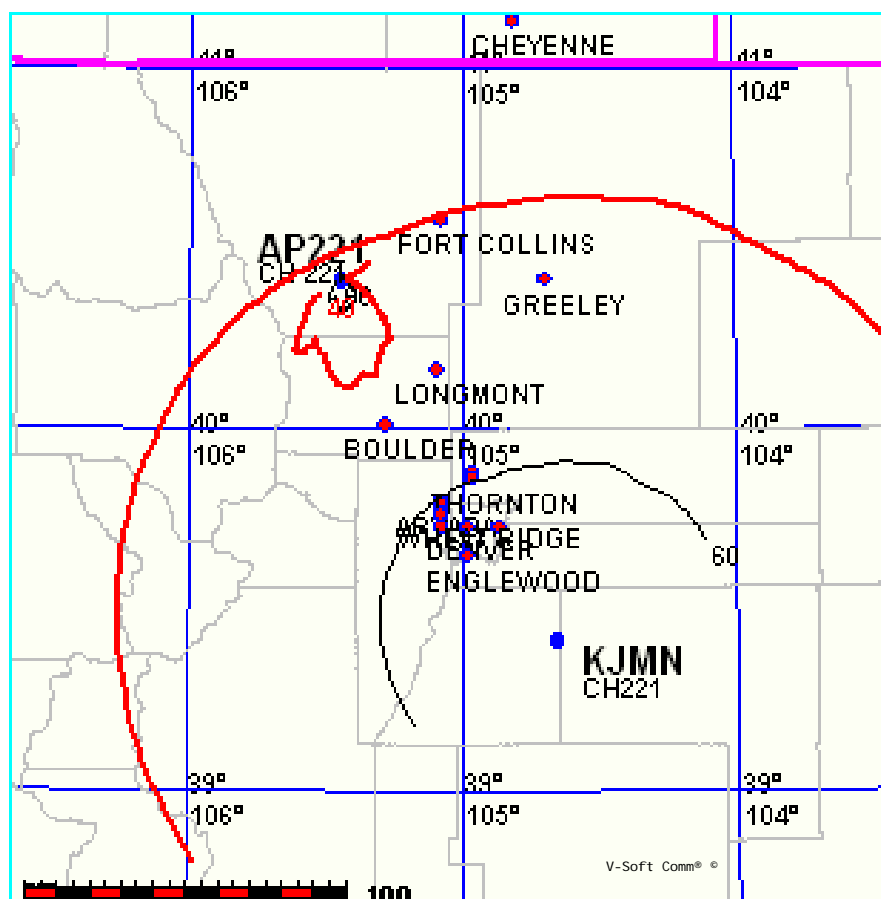
FMCONT Allocation Study

08-09-2003

AP221 CH 221 D  
.015 kW 2740M COR DA  
Prot. = 60 dBu  
Intef. = 40 dBu

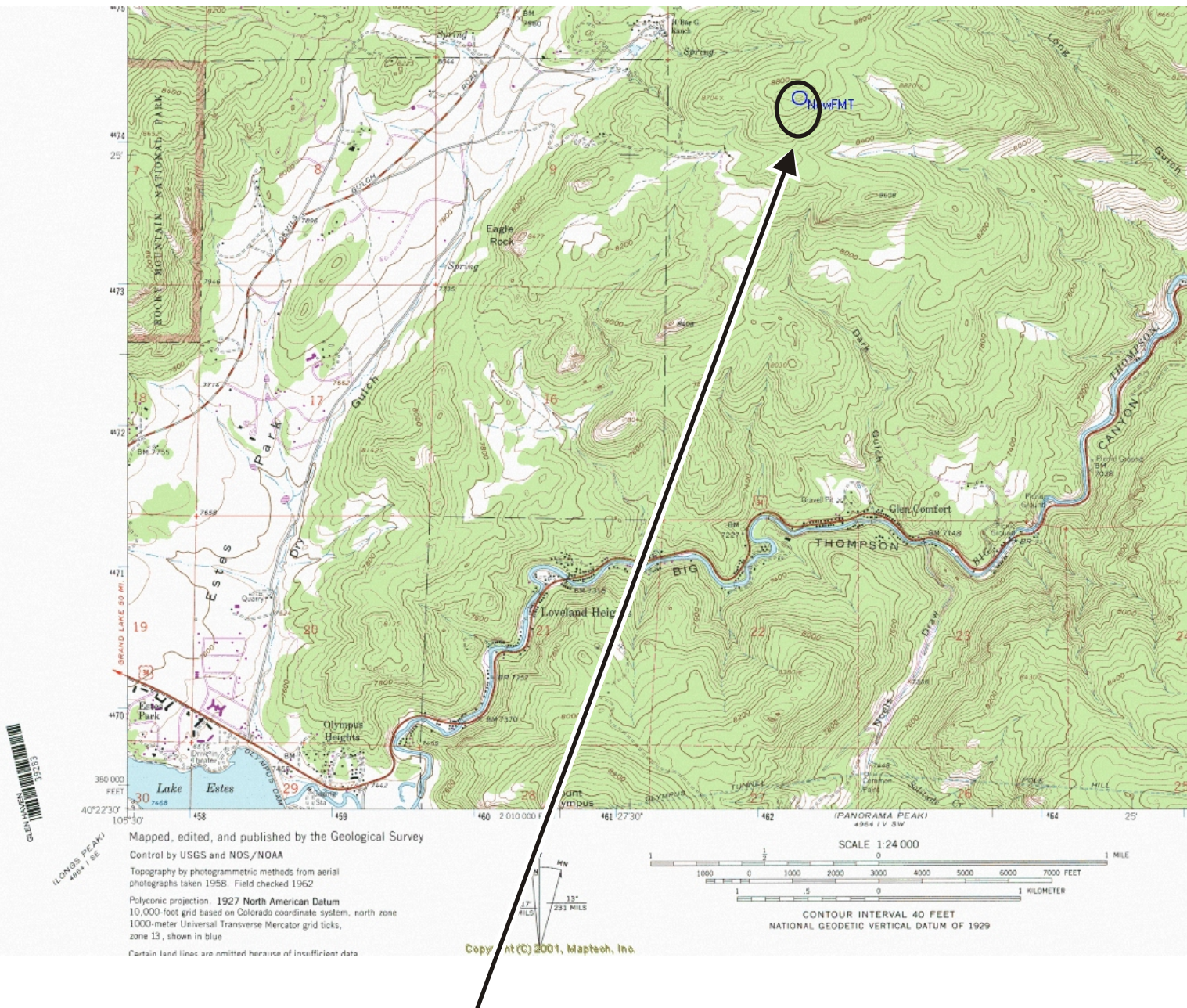
KJMN CH 221 C2  
33kW, 2132 M COR  
Prot. = 60 dBu  
Intef. = 40 dBu  
File # BLH19950929KE

1: 2,500,000



# EXHIBIT 12b

## Demonstration of No Population in 100 dBu Interference Contour



100 dBu  
Interference Contour  
Uninhabited/Unpopulated