

307(b) EXHIBIT

Citicasters Licenses, L.P. (“Clear Channel”), licensee of Station WFUS(FM), Bradenton, Florida, hereby submits this Application which proposes to delete Channel 278C at Bradenton, Florida and allot Channel 278C0 to Gulfport, Florida as that community’s first local service.

As demonstrated in the Technical Exhibit, Channel 278C0 can be allotted to Gulfport consistent with Section 73.207 of the Commission’s Rules. *See* Figure 1. A 70 dBu signal can be provided to Gulfport from the proposed reference coordinates. *See* Figure 2. Because WFUS(FM)’s facilities will not be relocated, there will be no change in population and area served. There are 41 stations providing protected service to Gulfport. *See* Figures 3 and 4.

Clear Channel desires to change the community of license for WFUS(FM) from Bradenton to Gulfport under the guidelines set forth in *Amendment of the Commission’s Rules Regarding Modification of FM and TV Authorizations to Specify a New Community of License*, 4 FCC Rcd 3870 (1989), *recons. granted in part*, 5 FCC Rcd 7094 (1990). There, the Commission stated that a station may change its community of license without subjecting the license to other expressions of interest if (1) the proposed allotment is mutually exclusive with the current allotment; (2) the current community of license will not be deprived of its only local service; and (3) the proposed arrangement of allotments is preferred under the Commission’s allotment priorities. These criteria are met here. First, the proposed use of Channel 278C0 at Gulfport is mutually exclusive with the current use of Channel 278C at Bradenton. *See* Figure 1. Second, Bradenton will not be deprived of its only local service because it will continue to be served by Stations

WWPR(AM) and WJIS(FM). Third, the provision of a first local service at Gulfport (2000 U.S. Census population 12,527) under Priority 3 will result in a preferential arrangement of allotments over the retention of a third local service at Bradenton (2000 U.S. Census population 49,504) under Priority 4. *See Revision of FM Assignment Policies and Procedures*, 90 FCC 2d 88 (1982).

Both Gulfport and Bradenton are located within Urbanized Areas – Gulfport in the Tampa-St. Petersburg Urbanized Area and Bradenton in the Sarasota-Bradenton Urbanized Area. The relocation of WFUS(FM)’s community of license from one Urbanized Area to another may implicate the Commission’s policies set forth in *Faye and Richard Tuck*, 3 FCC Rcd 5374 (1988) (“*Tuck*”). Therefore, out of an abundance of caution, Clear Channel will subject the proposed relocation of WFUS(FM)’s community of license to *Tuck*’s eight factors in order to demonstrate Gulfport’s independence from St. Petersburg, Florida.

1. ***Extent to which residents of Gulfport work in Gulfport.*** According to 2000 Census figures, 592 of the 5,103 employed individuals in Gulfport, or 11.6%, work in Gulfport. This percentage compares favorably with other independent communities. *See, e.g., Albemarle and Indian Trail, North Carolina*, 16 FCC Rcd 13876 (2001) (11.3% of working-age residents worked in community); *Coolidge and Gilbert, Arizona*, 11 FCC Rcd 3610 (1996) (13% of Gilbert’s working population actually worked in Gilbert). Further, as shown below, there are many employers in Gulfport who provide ample opportunities for Gulfport residents to be employed in Gulfport and not in St. Petersburg. This alleviates any concerns that Gulfport is dependent on St. Petersburg for the

employment of its residents. *See Lebanon and Speedway, Indiana*, 17 FCC Rcd 25064, 25065 (2002). *See* Ex. 1.

2. ***Newspapers and other media that cover Gulfport's local needs and interests.*** The residents of Gulfport are able to obtain information on their community from *The Gabber*, a family owned and operated weekly newspaper that has served Gulfport since 1968. *See* Ex. 1.

3. ***Community leaders and residents perceive Gulfport as being separate from St. Petersburg.*** Gulfport's independence from St. Petersburg and other neighboring communities is easily demonstrated through a variety of sources. Incorporated in 1910, the City of Gulfport operates independently of St. Petersburg through its City Charter. Gulfport also has distinct and precisely measured political boundaries that separate it from neighboring communities. Gulfport's economy is actively promoted by the Gulfport Chamber of Commerce, an organization with a large membership roster. *See* Ex. 1. Gulfport also has a theater troupe, the Gulfport Community Players, that clearly identifies with the community. Also, as detailed below, a number of businesses identify with the community by using "Gulfport" in their names. *See* Ex. 1.

4. ***Gulfport has its own independent government entities.*** As discussed above, in 1910, the citizens of Gulfport elected to incorporate their community and enjoy the benefits of self-governance. Gulfport's charter provides for a Mayor, a five-member City Council, and various boards and commissions. In addition, the Charter vests the municipal government various powers traditionally granted to city governments, such as the power to levy taxes and other assessments, to make public improvements, to create a

police force and a fire department, to incur debt, to exercise eminent domain, and to regulate businesses. *See* Ex. 1.

5. ***Zip code, post office, and phone directory.*** Gulfport has a post office and its own ZIP code, 33707. Businesses and residents in Gulfport therefore have Gulfport addresses. In addition, the City of Gulfport’s municipal government publishes a directory of government telephone numbers on its website, and telephone directory is available for Gulfport’s residents.. *See* Ex. 1.

6. ***Gulfport has its own commercial establishments, community organizations and health care providers.*** There are numerous business in the area that identify with the community by using “Gulfport” in their name. They include, the Gulfport Beach Bazaar, Gulfport Casino and Ballroom, Gulfport Central Title, Gulfport Garage, Gulfport Gems, Gulfport Hardware, Gulfport Family Restaurant, Gulfport Florist, and Gulfport Motorcycle Services, just to name a few. The community is also served by a number of community organizations, including the . the Gulfport Little League, the Gulfport Lions Club, the Gulfport Women’s Club, the Gulfport Yacht Club, and the Gulfport Historical Society. There are also a number of doctors who practice in Gulfport. *See* Ex. 1.

7. ***Advertising market.*** The *Gabber* enables Gulfport businesses to reach Gulfport residents independently of the St. Petersburg advertising market.

8. ***Gulfport has its own schools, libraries, police department, and fire department.*** Gulfport is the home to three public schools, Boca Ciega High School, Gulfport Montessori Elementary School, and the Hamilton Disston School. Total enrollment in the Gulfport public schools is 2,602. Gulfport residents also have access to

a local library, where they can attend community events in addition to using the library's print and computing resources. *See* Ex. 1. In addition, the City of Gulfport operates its own police and fire departments to serve and protect the community's residents and businesses. *See* Ex. 1.

For the foregoing reasons the Commission should delete Channel 278C at Bradenton, Florida and allot Channel 278C0 at Gulfport, Florida as that community's first local service.

Exhibit 1



U.S. Census Bureau

American FactFinder

FACT SHEET

Gulfport city, Florida

View a Fact Sheet for a **race, ethnic, or ancestry group**

Census 2000 Demographic Profile Highlights:

General Characteristics - show more >>

	Number	Percent	U.S.		
Total population	12,527			map	brief
Male	5,889	47.0	49.1%	map	brief
Female	6,638	53.0	50.9%	map	brief
Median age (years)	47.3	(X)	35.3	map	brief
Under 5 years	490	3.9	6.8%	map	
18 years and over	10,548	84.2	74.3%		
65 years and over	3,507	28.0	12.4%	map	brief
One race	12,308	98.3	97.6%		
White	11,199	89.4	75.1%	map	brief
Black or African American	884	7.1	12.3%	map	brief
American Indian and Alaska Native	52	0.4	0.9%	map	brief
Asian	67	0.5	3.6%	map	brief
Native Hawaiian and Other Pacific Islander	8	0.1	0.1%	map	brief
Some other race	98	0.8	5.5%	map	
Two or more races	219	1.7	2.4%	map	brief
Hispanic or Latino (of any race)	435	3.5	12.5%	map	brief
Household population	12,359	98.7	97.2%	map	brief
Group quarters population	168	1.3	2.8%	map	
Average household size	1.98	(X)	2.59	map	brief
Average family size	2.63	(X)	3.14	map	
Total housing units	7,306			map	
Occupied housing units	6,246	85.5	91.0%		brief
Owner-occupied housing units	4,455	71.3	66.2%	map	
Renter-occupied housing units	1,791	28.7	33.8%	map	brief
Vacant housing units	1,060	14.5	9.0%	map	

Social Characteristics - show more >>

	Number	Percent	U.S.		
Population 25 years and over	9,828				
High school graduate or higher	8,017	81.6	80.4%	map	brief
Bachelor's degree or higher	1,943	19.8	24.4%	map	
Civilian veterans (civilian population 18 years and over)	2,014	19.1	12.7%	map	brief
Disability status (population 5 years and over)	3,484	28.9	19.3%	map	brief
Foreign born	1,163	9.2	11.1%	map	brief
Male, Now married, except separated (population 15 years and over)	2,734	53.4	56.7%		brief
Female, Now married, except separated (population 15 years and over)	2,556	44.2	52.1%		brief
Speak a language other than English at home (population 5 years and over)	1,444	11.9	17.9%	map	brief

Economic Characteristics - show more >>

	Number	Percent	U.S.		
In labor force (population 16 years and over)	5,563	51.4	63.9%		brief
Mean travel time to work in minutes (workers 16 years and over)	25.4	(X)	25.5	map	brief
Median household income in 1999 (dollars)	28,809	(X)	41,994	map	
Median family income in 1999 (dollars)	37,016	(X)	50,046	map	


Per capita income in 1999 (dollars)	22,801	(X)	21,587	map	
Families below poverty level	306	9.5	9.2%	map	brief
Individuals below poverty level	1,646	13.3	12.4%	map	

Housing Characteristics - show more >>

	Number	Percent	U.S.		
Single-family owner-occupied homes	2,932				brief
Median value (dollars)	66,800	(X)	119,600	map	brief
Median of selected monthly owner costs	(X)	(X)			brief
With a mortgage (dollars)	691	(X)	1,088	map	
Not mortgaged (dollars)	250	(X)	295		

(X) Not applicable.

Source: U.S. Census Bureau, Summary File 1 (SF 1) and Summary File 3 (SF 3)

The letters PDF or symbol  indicate a document is in the Portable Document Format (PDF). To view the file you will need the Adobe® Acrobat® Reader, which is available for **free** from the Adobe web site.

[Home](#) | [Sign In](#)

Locator

powered by **Switchboard**

Post Office Details

 [Print This Page](#)

Post Office - Gulfport

**3115 Beach Blvd S
Gulfport, FL 33707-6027**Phone: **(727)381-8548**
Toll-free: **(800)ASK-USPS**TTY Service for the hearing impaired only:
1-877-889-2457[Enlarge Map](#) | [Driving Directions](#) | [What's Nearby](#)

Hours

Business Hours

**MO 09:00-04:30PM
TU 09:00-04:30PM
WE 09:00-04:30PM
TH 09:00-04:30PM
FR 09:00-04:30PM
SA 09:00-12:00PM**

Last Daily Collection

**MO 04:30PM
TU 04:30PM
WE 04:30PM
TH 04:30PM
FR 04:30PM
SA 12:00PM**

Business Types

- Post Offices
- Variety Stores

[Site Map](#) | [Contact Us](#) | [Forms](#) | [Gov't Services](#) | [Jobs](#) | [National & Premier Accounts](#)Copyright © 1999-2005 USPS. All Rights Reserved. [Terms of Use](#) | [Privacy Policy](#) | [No FEAR Act EEO Data](#)**Postal Inspectors**
[Preserving the Trust](#)**Inspector General**
[Promoting Integrity](#)data by **AXIOM**

Some business data provided by infoUSA, Inc. Copyright © 2007

© 2007 **InfoSpace inc.** All Rights Reserved.



Search for Public Schools

CCD Common
Core of Data
Search Results (records: 3)
[Modify Search](#) [New Schools](#) [Data Notes/Grant IDs](#) [Help](#)

	School Name	Phone	County	Students	Grades
1.	BOCA CIEGA HIGH SCHOOL 924 58th Street, S, Gulfport, FL 33707	727-893-2780	Pinellas	2,030	9-12
2.	GULFPORT MONTESSOURI ELEMENTARY SCHOOL 2014 52nd Street, S, Gulfport, FL 33707	727-893-2643	Pinellas	422	PK-5
3.	HAMILTON DISSTON SCHOOL 5125 11th Avenue, S, Gulfport, FL 33707	727-893-1115	Pinellas	150	PK-12

Source: CCD Public school data 2004-2005 school year

Note: "N/A" means the data are not available or not applicable.

Similar SearchBased on your geographic search for Public Schools,
you can also search for...
[Public School Districts](#) | [Private Schools](#) | [Public Libraries](#)
Download This Data
[Download
Excel File](#)
Your data file will be created based on the selection
criteria you have entered.Depending on the amount of data needed to create the file, this may take a
few minutes. The option will also be available to download the Excel file
as a compressed Zip file.



Search for Public Libraries

LSP Library Statistics
Program**Search Results** (records: 1)[Modify Search](#) [About the Data](#) [Help](#)

Library Name	Phone	County	Circulation	Visits
1. GULFPORT PUBLIC LIBRARY 5501 28th Avenue South, Gulfport, FL 33707	(727) 893-1074	Pinellas	N/A	N/A
 Library System  Central Library  Branch Library  Bookmobile  Books-by-Mail				

Source: Public Libraries Survey, Fiscal Year 2004

Note: "N/A" means the data are not available or not applicable.

Similar Search

Based on your geographic search for Public Libraries,
you can also search for...[Public Schools](#) | [Public School Districts](#) | [Private Schools](#)

Download This Data

[Download
Excel File](#)Your data file will be created based on the selection
criteria you have entered.Depending on the amount of data needed to create the file, this may take a
few minutes. The option will also be available to download the Excel file
as a compressed Zip file.


PSS Private School
Universe Survey

Search Results (records: 2)

[Modify Search](#) [About the Data](#) [Help](#)

	School Name	Phone	County	Students	Grades
1.	SUNFLOWER PRIVATE SCHOOL 5313 27th Avenue S, Gulfport, FL 337075417	(727) 321-7657	Pinellas	47	UG
2.	WALDEN SCHOOL 2728 53rd Street South, Gulfport, FL 337075444	(727) 321-7441	Pinellas	17	6-8

Source: PSS Private School Universe Survey data for the 2003-2004 school year

Note: "N/A" means the data are not available or not applicable.

Similar Search

Based on your geographic search for Private Schools,
you can also search for...

[Public Schools](#) | [Public School Districts](#) | [Public Libraries](#)

Download This Data


[Download
Excel File](#)

Your data file will be created based on the selection
criteria you have entered.

Depending on the amount of data needed to create the file, this may take a
few minutes. The option will also be available to download the Excel file
as a compressed Zip file.

[Yahoo!](#) [My Yahoo!](#) [Mail](#)

Search:

[Sign In](#)
New User? [Sign Up](#)[Yellow Pag](#)

Yahoo! Yellow Pages

Your Search:

Search by Category or Business Name (e.g. Hotel or Holiday Inn)

Location:
[Save Location](#) | [Char](#)[Top](#) > Search for: **gulfport**

All Businesses

Showing
Pr

Business Name:

Address:


[Bunnell, John - Gulfport Memorial Funeral Home](#)
(727) 347-5521 [Write a Review](#)5601 Gulfport Blvd S
Gulfport, FL [Map](#)**[City Of Gulfport](#)**
(727) 893-1071 [Write a Review](#)4630 29th Ave S
Gulfport, FL [Map](#)**[Gulfport Beach Bazaar](#)**
(727) 381-8548 [Write a Review](#)3115 Beach Blvd S
Gulfport, FL [Map](#)**[Gulfport Casino & Ballroom](#)**
(727) 893-1070 [Write a Review](#)5500 Shore Blvd S
Gulfport, FL [Map](#)**[Gulfport Central Title Co Inc](#)**
(727) 384-5858 [Write a Review](#)5511 Gulfport Blvd S
Gulfport, FL [Map](#)**[Gulfport Chamber Of Commerce](#)**
(727) 344-3711 [Write a Review](#)2808 58th St S
Gulfport, FL [Map](#)**[Gulfport Church Of Nazarene](#)**
(727) 321-1598 [Write a Review](#)1000 55th St S
Gulfport, FL [Map](#)**[Gulfport City Clerk](#)**
(727) 893-1000 [Write a Review](#)2401 53rd St S
Gulfport, FL [Map](#)**[Gulfport City Hall](#)**
(727) 893-10002401 53rd St S
Gulfport, FL [Map](#)**[Gulfport City-Community Svc](#)**
(727) 893-2242 [Write a Review](#)5501 27th Ave S
Gulfport, FL [Map](#)**[Gulfport Code Enforcement](#)**
(727) 893-1061 [Write a Review](#)2401 53rd St S
Gulfport, FL [Map](#)**[Gulfport Community Players](#)**
(727) 322-0316 [Write a Review](#)5315 28th Ave S
Gulfport, FL [Map](#)


Gulfport Council Members (727) 893-1000 Write a Review	2401 53rd St S Gulfport, FL Map
Gulfport Elementary (727) 893-2643 Write a Review	2014 52nd St S Gulfport, FL Map
Gulfport Family Restaurant (727) 321-2628 Write a Review	2025 49th St S Gulfport, FL Map
Gulfport Fire Dept (727) 893-1062 Write a Review	2401 53rd St S Gulfport, FL Map
Gulfport Garage (727) 345-1798 Write a Review	2731 Beach Blvd S Gulfport, FL Map
Gulfport Gems (727) 893-2242 Write a Review	5501 27th Ave S Gulfport, FL Map
Gulfport Hardware (727) 323-3704	5006 Gulfport Blvd S Gulfport, FL Map
Gulfport Historical Museum (727) 327-0505 Write a Review	5301 28th Ave S Gulfport, FL Map


Showing 1-20 of 44 | **Pre**

[A](#) [B](#) [C](#) [D](#) [E](#) [F](#) [G](#) [H](#) [I](#) [J](#) [K](#) [L](#) [M](#) [N](#) [O](#) [P](#) [Q](#) [R](#) [S](#) [T](#) [U](#) [V](#) [W](#) [X](#) [Y](#) [Z](#) all

Sponsor Results [\(What's this?\)](#)

[Gulfport Hotels](#)  Save more online at Travelocity.com for low-priced accommodations.
www.travelocity.com


[Gay Realtor: St Petersburg Gulfport](#)  Find a Realtor in St. Pete, Kenwood, Old Northeast or the rest of Pinellas County.
gay-real-estate-agent.com

[Gulfport at Expedia](#)  Book together & save at Expedia.com. Get ready to go places.
www.expedia.com

Some links and information accompanying the All Businesses listings may be provided by Yahoo! and Yahoo!'s content providers, affiliated with or endorsed by the listers or their listing agents.

Modify your Search

SEARCH:
(by name or category)

Locations: 
(Address, Intersection or [Airport Code](#))



City of Gulfport Florida

Gateway to the Gulf

[Expand All](#) | [Collapse All](#)

Home
Live GTV15 Webstream
Most Requested Pages
Casino and Theater
Your Government

FORM OF GOVERNMENT

Message From The Mayor

Ward 1 Ted Phillips

Ward 2 Michele King

Ward 3 Bob Worthington

Ward 4 Mary Stull

City Departments
Online Payments
City Events Calendar
Special Documents
Contact Us
Search and Special Links

FORM OF GOVERNMENT

The City of Gulfport has a Council-Manager form of government. A five person City Council is elected citywide by the voters, each for a two-year term, except for the Mayor who is elected to a three-year term. The City is divided into four wards, each of which is represented by one of the council members. The Mayor is the fifth member of the Council and is elected at-large, not representing any ward. The Mayor presides over the City Council Meetings, which are held the first and third Tuesdays of each month.

The City Council sets City policies, including adopting the budget on or before the beginning of each fiscal year, establishing local laws, and approving large expenditures of City funds. The five members of the City Council appoint a City Manager to run the day-to-day operations of the City. The City Manager is responsible for City finances and personnel management, as well as other administrative duties.



[click for larger map](#)

Copyright © 2007 City of Gulfport Florida . All Rights Reserved.

City of Gulfport
2401 53rd Street South
Gulfport, FL 33707
Comments webmaster@ci.gulfport.fl.us



City of Gulfport Florida

Gateway to the Gulf

[Expand All](#) | [Collapse All](#)

Home
Live GTV15 Webstream
Most Requested Pages
Casino and Theater
Your Government
City Departments

Administrative Services
 City Attorney
 City Clerk
 City Manager
 Community Development
 Leisure Services
 Overview
 Casino
 Library
 Marina
 Senior Center
 Multi Purpose Senior Center
 Activities
 Calendar
 GEMS Schedule
 Health Related Activities
 Senior Advisory Board

Copyright © 2007 City of Gulfport Florida . All Rights Reserved.

City of Gulfport
 2401 53rd Street South
 Gulfport, FL 33707
 Comm

Parks
 Rec Center
 Skate Park Consent Form
 Theater
 Information Technology
 Public Safety
 Public Works

Online Payments
City Events Calendar
Special Documents
Contact Us
Search and Special Links

SERVICES AND SUPPORT GROUPS

** See calendar for times and dates

- AA Group
- Bereavement Support Group
- Caregiver Support Group
- GEMS Mini-Bus Transportation Service for Gulfport residents (See GEMS)
- Meals on Wheels (Neighborly Care Network)
- Senior Support Group (Suncoast Center for Community Mental Health)
 - Group
 - Individual, 60+
- Senior Dining Program (Neighborly Care Network)
- SHINE (Serving Health Insurance Needs of Elders)
- Speech Reading Support Group
- Social Security Assistance
- Social Services
- Telephones for Hearing Impaired (Deaf Service Connection) Must qualify
- Telephone Reassurance Program
- USDA Food Distribution

[gulfport.fl.us](http://www.gulfport.fl.us)



gulfport florida chamber of commerce

[contact the chamber](#) [join](#) [members only](#) [homepage](#)

chamber board
member directory
art walk
activities
attractions
events
souvenirs
find us

directory

The Gulfport Chamber of Commerce Membership Directory
For corrections or updates call Dolly Tickell at 727-347-4747

SELECT A CATEGORY

SPECIAL RECOGNITION & APPRECIATION TO THE CHAMBER VOLUNTEERS:

Office Manager, Margo Scannell
 Beth Armstrong
 Sherry Billhimer
 Elsie Crimaldi
 Kathleen Durand
 Ed Fernandez
 Marjorie Gevozinski
 Marlene Incarnato
 John Milford
 Dolly Tickell
Volunteer Emeritus, Frances Purdy

Charles Purcy
 Ann Rein
 Marjorie Ullman
 Sally Wilkinson
 Grace Whitehair
 Elizabeth Whitehair
 Greta Wohlers
 Fran Worthington
 Liz Zerban

ASSOCIATE MEMBERS:

Mary P. Atkinson
 Joan Barry
 Betsy Beddow
 Alice Billhimer
 Ted Bowman
 Mary Carnes Norloff
 Elsie Crimaldi
 Bette Dunn
 Carole Gabrio
 Lisa Grant
 Marge Grudzinski
 Marlys Harner
 Mitch Incarnato
 Bill Jonas

Marjorie Milford
 Diane Rimkus
 Dana Jo Robichaux
 Judy Ryerson
 Patricia A. Scullion
 Marlene Shaw
 Gigi Stengard
 Mark Stevens
 Mary Stull
 Michele Lussier
 Susan M. Sullivan
 Marjorie Ullman
 Robina Wertalik
 Grace Whitehair

Sandra LaPlanche
Leslie McEwen

Robert Worthington

ACCOMMODATIONS BED & BREAKFASTS

Sea Breeze Manor - Lori Rosso [website](#) 727-343-4445
Peninsula Inn and Spa [website](#) 727-346-9800
---- Bob & Karen Chapman

ACCOUNTING

Marianne Reisen, CPA 727-384-3941
Elizabeth Wood, E.A. 727-344-4472
David Hastings, CPA, PA 727-322-0909

ACTORS

Notable Works, Inc.- Glenn W. Suyker [email](#) 727-382-4400
Three Muses & a Fool Productions - Ciara Carinci 727-321-1786

ACUPUNCTURE

Dr. Dani Accupuncture Physician [website](#) 727-488-3601

ADVERTISING NEWSPAPERS

The Gabber - Ken & Debbie Reichert [website](#) 727-321-6965
Paradise News - Pete & Rene Roos [website](#) 727-363-6888
(note website is under construction)

AIR CONDITIONING CONTRACTORS

Diversified Home Services - John Harrison [email](#) 727-735-9328
Bay Area Heating & Cooling [website](#) 727-394-8041

ALZHEIMERS FACILITIES

The Fountains, Suzette Hadermann & Julie Frenzel 727-812-3927
[website](#)

[back to the top](#)

ANTIQUES AND COLLECTIBLES

Elizabeth-Dawn Inc. - Dawn Fisher 727-323-4500

APARTMENT REFERRAL SERVICE

Beach and City Homes [website](#) 727-452-7756

ARCHITECTS

Rye Farmer Associates 727-368-5942

ARTISTS**ART/ RETAIL**

Art Village Courtyard - Joe Culbertson 727-862-2206

see website - Retail Shops

Fiorini Gallery & Frame - Dan Fiorini 727-327-9000, 727-344-1000

ASSISTED LIVING FACILITIES

The Fountains at Boca Ciega Bay - Suzette 727-347-2169

-----Hadermann and Julie Frenzel [website](#)

Pallazzo Di Oro - Beely Preidis [website](#) 727-867-2000

[back to the top](#)

ASSOCIATIONS

Town Shores Master Association - Gregg Fata 727-345-9491

American Cancer Society - Christie Pratt [website](#) 727-812-7025

ATTORNEYS

Karen Keaton, P.A. 727-822-2204 ext 4

Richard Kriseman, P.A. [website](#) 727-328-2211

Jim Thaler - Thaler Law Firm 727-347-7788

Dietz & Yannitelli - Thomas Yannitelli [email](#) 813-495-0725

AUTOMOBILE BODY REPAIR**AUTOMOBILE DEALER****AUTOMOBILE RENTAL****AUTOMOBILE REPAIR & SERVICE**

Nationwide South - Dennis Neighbor 727-327-1135

Reed Car Care [website](#) 727-345-7882

Safety Tire Auto Service - John Grundon 727-321-1131

[back to the top](#)**AUTOMOTIVE TOWING SERVICE**

Nationwide South - Dennis Neighbor 727-327-1135

BAKERIES**BANDS & ORCHESTRAS**Act 1 Promotions [website](#) - Dolly Tickell 727-347-4747**BANKS**AmSouth - Jason Stiff [website](#) 727-381-0304

Bank of America - Ed Riviera 727-344-0811

First State Bank - Jed Wilkinson [website](#) 727-898-1000

Wachovia Bank - Pam Garrison 727-820-3425

Washington Mutual Bank - Sulma Medina & 727-347-1639

----Elena Brisson

[back to the top](#)**BARBER SHOP****BASEBALL**

Tampa Bay Devil Rays - Kristi Capone 727-825-3206

Little League Baseball, Inc.
658 58th Street S., Gulfport 727-344-2661[Southern Regional Headquarters](#)Gulfport Little League - George DiRienzo 727-323-0792
5460 Tangerine Avenue S.
Gulfport, FL [website](#), [website](#)Hoyt Baseball Field
23rd Avenue & 57th Street S., Gulfport, FL**BEAUTY SALONS**

Kohl & Childs... For Hair - Alice Kohl 727-302-9844

Larinda's Skin & Nail Studio - Larinda VanDriesen 727-345-4476

**BED & BREAKFAST, INNS &
ACCOMMODATIONS**Peninsula Inn & Spa [website](#) Bob & Karen 727-346-9800
ChapmanSea Breeze Manor [website](#) - Lori Rosso 727-343-4445

[back to the top](#)**BOATS - CHARTER**

Dolphin Landings, Inc. - Captain Dan Perez 727-360-7411

-----[website](#)**BOAT REPAIR/ SERVICE****BOOKS, NEW & USED****BUILDING CONTRACTORS/COMMERCIAL**

Freehold Partners 727-323-3455

CABLE COMPANY**CANDY**[back to the top](#)**CAR WASH MANAGEMENT**

Calusa Enterprises Inc. - Michael Baggs 727-345-4997

CATERING & FACILITY**CEMETERY LOT BROKERS**Cemetery Connections - Mike Calamari [website](#) 727-527-1177**CEMETERIES**Woodlawn Memorial Gardens [website](#) 727-345-7626**CHIROPRACTORS**Advantage Health & Wellness [website](#) 727-343-3959Dr. Stuart Pollack [email](#) 727-321-9520Probeck Chiropractic Clinic [email](#) 727-384-2611Dr. Jason Baker [email](#) 727-343-4283[back to the top](#)**CHURCHES/ TEMPLES**Most Holy Name of Jesus Church [website](#) 727-347-9989

(new pastor) Father James Merkel

Church of Scientology [website](#) Barbara Hamilton 727-872-0722

CIGAR BAR & SHOPS

Havana Cigar Factory	727-322-0909
----------------------	--------------

CITY OF GULFPORT**Fire, Police, Medical Emergencies****911**

Non Emergency Fire	727-893-1062
Non Emergency Medical	727-893-1059
Non Emergency Police	727-893-1030
City of Gulfport City Manager Tom Brobeil	727-893-1010
Mayor Mike Yakes	727-893-1007

CITY OF GULFPORT ADMINISTRATIVE SERVICES

Water/ Sewer/ Billing	727-893-1000
Building Permits	727-893-1000
City Clerk	727-893-1000
City Hall Administration	727-893-1000

[back to the top](#)**CITY OF GULFPORT COMMUNITY SERVICES**

Beach Pavilion Reservations	727-893-1067
CASINO - 5500 Shore Blvd. S.	727-893-1070
Director of Community Service	727-893-1067
GEMS	727-893-2242
LIBRARY 5501 28th Ave. S.	727-893-1074
MARINA 4630 29 Ave. S.	727-893-1071
PARKS	727-893-1092
RECREATION CENTER	727-893-1068
5730 Shore Blvd. S.	
SENIOR CENTER	727-893-2237
5501 27th Ave. S.	
THEATRE (The Catherine Hickman)	727-893-1070
5501 27th Ave. S	
ENVIRONMENTAL SAFETY	727-893-1000
PUBLIC SERVICES	727-893-1000

CLEANING SERVICES[back to the top](#)**CLUBS & ORGANIZATIONS**

AAA Auto Club South - Tim Howard	727-826-3695
Boca Ciega Yacht Club - James Meyer website	727-321-7295
Gulfport Lions Club	727-321-5717
Gulfport Little League website --- 2nd website	727-323-0792
---5460 Tangerine Ave. S. Gulfport	
Gulfport Women's Club - Jean Jaworowski	727-302-9423

Gulfport Yacht Club - www.gulfportyachtclub.com 727-321-8364
Hoyt Baseball Field
---Corner of 23rd Ave & 57th St. South
Isla Del Sol Yacht Club - Cathy Rogers [website](#) 727-906-4752
Little League Baseball, Inc. 727-344-2661
---(Southeast Regional Headquarters)
---658 58th Street South, Gulfport -- [website](#)
Pasadena Yacht & Country Club - Sarah Harvey 727-381-7922
----- www.pyccgolf.com
Silver Threads Celebration [website](#) Rikki Lewis 727-323-0132
St. Pete Pride Inc. [website](#) 727-542-9262
Tampa Bay Devil Rays 727-825-3290

COLLEGES & UNIVERSITIES

Stetson University / College of Law [website](#) 727-562-7800
---Darby Dickerson

COMPUTER DEALER & REPAIR

Time Systems [website](#) 727-898-8463

CONDOMINIUMS

Seaside Villas at Gulfport [website](#) 727-341-0186

CONTRACTORS**COSMETICS**

[back to the top](#)

COUNSELORS**CREMATORY**

R. Lee Williams & Son Funeral Home [website](#) 727-345-7797

DAY CARE, CHILD

Helen E. Davis 727-323-2830

DENTISTS**DISC JOCKEYS**

Act 1 Promotions [website](#), [email](#) 727-347-4747

ELECTRICIANS**EMPLOYMENT CONTRACTORS****EXECUTIVE DIRECTOR OF CHAMBER**

Gregg Stemm

727-542-9262

FINANCIAL PLANNING/CONSULTING

Sundial Financial Group (Carole Rainey)
MetLife Financial Services (Yvette Heatly)
Brooks, Bergen & McCoy [website](#)

727-368-9401
813-393-3597
727-521-0900

FINANCIAL SERVICES

Primerica Sharon Dunaway
Smalltown Tax & Financial Services
--- (Elizabeth Wood)

727-644-8945 (alt)
727-344-4472

FLAGSFrank Nicolosi --website: [Flag Supermarket](#)

866-932-3524

FLORISTS

Gulfport Florist [website](#)
Thai-Rific Orchids & Exotic Plants [website](#)

727-321-2732

FUNERAL DIRECTORS

A Life Tribute Funeral Care - Bob Easter [website](#)
Williams & Son Funeral Home - R. Lee Williams

727-347-5521
727-345-7797

GUARDIANSHIPGuardian Associates - Gary Atkins [email](#)

727-345-2386

[back to the top](#)**GASOLINE STATIONS****GOLF EQUIPMENT/ SUPPLIES****GIFTS**

GROCERS**HAIR REMOVAL**

Laser Lovers - Jennifer Edwards [website](#) 727-341-1011

HAULING**HEALTH CARE**

Health and Rehab Centre at Dolphin View 727-384-9300

HEALTH PRODUCTS

Gulfport Healthcare Inc. [website](#) 727-381-9809

HEATING CONTRACTORS

Bay Area Heating & Cooling [website](#) 727-394-8041

HOLISTIC PRACTITIONERS

The Longhouse - Andrea Royce [website](#) 727-322-5766
Sunset Fortune, Inc. [website](#) Can San Tranton 727-363-4456

HOME BUILDERS

Urban Craftsman Homes of Florida [website](#) 727-490-5814
----website under construction

HOME HEALTH CARE SERVICES

Coastal Home Care 727-576-2040

HOME INSPECTIONS

Pillar to Post [website](#) - James Schuller 727-323-3889

HOSPICES

The Hospice of the Florida Suncoast - Mike Bell 727-523-3395
---- www.thehospice.org

HOSPITALS

Palms of Pasadena Hospital - Debbie Carson 727-381-1000

INDEPENDENT LIVING

Freedom Square - Anna Linville	727-398-0159
Fountains at Boca Ciega Bay - Judy Stump	727-347-2169
Pallazzo Di Oro - Marsha Wool	727-867-2000

[back to the top](#)**INSURANCE COMPANIES**

Manfredi Life & Health website	727-323-8007
State Farm - Whitman Insurance, Brenda Whitman	727-345-1668
Points West Enterprises - Sheila Emscher	727-344-0318
Brooks, Bergen & McCoy - Nancy Goodwin	727-521-0900
----- website	

INSURANCE INSPECTION

Diversified Home Services - John Harrison	727-735-9328
---	--------------

INVESTIGATOR, PRIVATE

Tampabay Investigations - Carol Sciannameo	727-542-5597
--	--------------

[website](#) --- [email](#)

INVESTMENTS:**KITCHEN CABINETS AND ACCESSORIES****LANDSCAPING****LIGHTING****LAUNDROMATS****MARKETING**

ProLinks Marketing website	281-681-3600
--	--------------

MARKETING / CONSULTANTS**MASSAGE - LICENSED THERAPISTS**

The Longhouse - Andrea Royce	727-322-5766
------------------------------	--------------

MORTGAGE BROKERS

Fortune Financial Mortgage - Susan Westerhoff 727-322-0000

-----[website](#)

Bay Lending Corporation - Dawn Green 727-502-9400

MORTGAGES/ REVERSEStarpointe Mortgage [website](#) 727-456-1273 ext 358[back to the top](#)**MOTELS****MOVERS**Pride Moving Company [website](#) 727-328-7592**MOTORCYCLES - DEALERS, NEW****(See Also: Scooters)****MUSEUMS**

Florida Holocaust Museum 727-820-0100

Gulfport Historical Society 727-327-0505

Florida International Museum 727-822-3693

NEWSPAPERSThe Gabber [website](#) 727-321-6965

Paradise News 727-421-0341

NON-PROFIT ORGANIZATIONS

The Hospice of Florida Suncoast - Mike Bell 727-523-3395

-----[website](#)**NURSING HOMES**

Boca Ciega Center - Kevin Moore 727-344-4608

Egret Cove - Joseph Mingione 727-347-6151

Pasadena Manor - Lori Radice 727-347-1257

[back to the top](#)**PAINTING CONTRACTORS**

PEST CONTROL SERVICES

Bug Man, The [website](#) - Rick McChesney 727-328-2847

PET SPECIALTY PRODUCTS

Bark & Browse 727-327-2275

Reef Dog Gifts & Grooming [website](#) Mary O'Malley 727-323-7007

PET GROOMING & SUPPLIES

Reef Dog Gifts & Grooming [website](#) Mary O'Malley 727-323-7007

727-327-2275

PET TRAINING

Bark & Browse [website](#) 727-327-2275

PHOTOGRAPHER

Newton's Photography [website](#) - Wengay Newton 727-327-4664

Chi Nguyen [website](#) 727-481-5737

[back to the top](#)

PHYSICIANS, M.D. & D.O.**PIANO TUNING & REPAIR**

Notable Works, Inc. - Glenn Suyker [email](#) 727-381-4400

PLUMBING CONTRACTORS

Vail Plumbing - Kirk Vail 727-321-0964

POLITICAL REPRESENTATIVES

State Rep Charlie Justice [website](#) 727-552-1380

[back to the top](#)

POST OFFICE LOCATIONS

C/O Gulfport Beach Bazaar
3115 Beach Blvd. S. 727-381-8548

Gulfwinds 4222 22nd Ave. S.
St. Petersburg 1-800-275-8777

PRESSURE WASHERS

PRINTERS

Olympus Printing, Inc. - Joe Soska	727-302-0919
Sir Speedy Printing Center - Jeff Anderson	727-545-9000

PRIVATE INVESTIGATOR

Carol Sciannameo, Investigations, Inc.	(727) 542-5597
----- website aka Tampabay Investigations	

PROMOTIONAL PRODUCTS

Image Depot - Lou & Kris Daugherty website	727-541-4700
Printing for Promotion - Ed Cipkowski website	727-343-4054

PUBLISHERS PERIODICALS / MAGAZINES

The Florida Infoguide	727-864-2604
Gabber Newspaper website	727-321-6965
Paradise News	727-363-6888

REAL ESTATE - APPRAISERS

Dana Jo Robichaux	727-345-9717
Guy O'Connor & Associates - Deb LeClerc	727-776-1929
The Appraisal Link - Susan Wagner website	727-384-1288
Owen & Mack Appraisers - Brian Miller	727-410-9404

[back to the top](#)**REAL ESTATE**

All Stars Realty	727-204-6767
Sally Wilkinson	
Assist-2-Sell Tropical Realty Ron Kittle website	727-321-9991 x 301
Century 21 Mills First	
Sherry Mc Bay	727-251-0809
Coldwell Banker - Tammy Plummer website	727-251-6137
Caldwell Realty	727-822-9111
---Terry Stephens website email	
Caldwell Realty	727-688-7369
---Delia Davidson website	
Caldwell Realty -Nelda Hamm website	727-418-8948
Caldwell Realty	
Poul Hornsleth	727-321-1212
Caldwell Realty	
Timothy Swanson	727-698-3506
Coldwell Banker - Tammy Plummer website	727-455-2351
Jenny Berry Realty	
Jenny Berry	727-347-0187
King, Michele	
ReMax Preferred website	727-344-3610
Marie Powell and Company	
Tom Gregg	727-641-9868
Panos, Anne-Realtor	727-381-7788

Pasadena Waterfront Properties	727-492-7914
Bob Cooley website	
Pasadena Waterfront Properties	727-492-7917
Linda Cooley website	
Pasadena Waterfront Properties	727-384-6776
Tammy Apthorp website	
Points West Enterprises - Sheila Emscher	727-344-0318
Premier Group Realty	727-363-7811
Helen Adornato	
Premier Group Realty	727-455-4101
---Libby Cressey website	
Seller's Express Realty	727-743-7355
Annie Thompson	
Pasadena Waterfront Realty	727-384-6776
Re/Max Realty Sheri Ray	727-397-1800 ext 225
Wave Realty Carol D'Alessandro website	727-455-6553
Wave Realty Lisa Stoler website	727-328-1300
Weichert Realtors - Gateway to the Gulf	727-328-2700
Maddy Guenther website	
Williams, Russ website	
---Coldwell Banker Residential Real Estate	727-360-6927

REAL ESTATE - RENTALS

Caldwell Realty	727-321-1212
Paul Hornsleth	
Gulfport-Florida-Rentals.com Dolly Tickell	727-347-4747

REAL ESTATE - RENTALS-FURNISHED**SEASONAL & SHORT TERM**

Beach and City Homes Suzanne Armstrong	727-452-7756
----- website email: suzarm@tampabay.rr.com	
Gulfport-Florida-Rentals.com - Dolly Tickell email	727-418-7272
Gulfport Florida Vacation Rentals website	727-744-1617
Sand N Shore Cottages website	727-345-4060
---- (see photos at #47972 & #44192)	

REAL ESTATE RENTAL - COMMERCIAL

Freehold Partners	727-323-3455
-------------------	--------------

REHABILITATION SERVICES

Health and Rehab Centre at Dolphin View	727-384-9300
---	--------------

[back to the top](#)**RESTAURANTS**

Aquabella Raw Bar & Grill - Tom Geller	727-328-8280
Backfin Blue Cafe'	727-343-2583
Casper's McDonald's Restaurant	813-769-4908
Habana Cafe' website David & Jo Hastings	727-321-8855
H.T. Kane's - Tim & Helga Kane	727-347-6299
La Cote Basque - Carmen Frohne	727-321-6888
Mid Peninsula Seafood - Don & Joan Leak	727-327-8309

Subway, 22nd Avenue South - Jamie Salcedo 727-328-1391

RETAIL/ SHOPS

Art Village Courtyard, Joe Culbertson III [website](#) 727-862-2206
Domain - Michael McCue [website](#) 727-302-9299
Eileen's Resale Boutique - Eileen Navarro 727-322-1422
Lulu's Tropical Beach Store [website](#) 727-432-7447
Thai-Rific - Pandy & Pete Silavut 727-321-2732

RETIREMENT COMMUNITIES

Freedom Square - Anna Linville 727-398-0244
The Fountains Suzette Haderman & Julie Frenzel 727-463-8226
[website](#)

SCHOOLS, COLLEGES

Boca Ciega High School 727-893-2780
Gulfport Montessori Academy 727-893-2643
Hamilton Disston 727-893-1115
Stetson College of Law 727-562-7818

SCOOTERS, SALES & RENTALS

[back to the top](#)

SEAFOOD & FISH RETAIL

Mid Peninsula Seafood - Don & Joan Leak 727-898-6699

SENIOR CITIZENS SERVICES

Senior Solutions of Pinellas County - since 1998 727-327-0167
-----Jane Ogilvie [website](#)
Advanced Senior Solutions Pat Wellner [website](#) 727-345-5944

SHIPPING SERVICES

SOLAR ENERGY CONTRACTORS& EQUIP.

Solar Energy Systems [website](#) - Rich Glueck 727-347-4246
(note website is under construction)

STORAGE FACILITIES

STORAGE / PORTABLE

The Mobile Attic of TampaBay 727-328-0102
Lynelle Winans-Sparacino [website](#)

STATE REPRESENTATIVE (FLORIDA)

Charlie Justice 727-552-1380

[back to the top](#)

TAILORS

The Tailor Shop, Inc. - Joey Goodrich [website](#) 727-345-1684

TAX PREPARATION

Reisen, CPA, Marianne 727-384-3941
Smalltown Tax & Financial Services 727-492-5679
--- Elizabeth Wood

TELEPHONE EQUIPMENT & SYSTEMS

Inter-Tel Technologies, Inc. [website](#) 813-769-2650

THEATRE, LIVE PERFORMANCES

Three Muses & A Fool Production - Ciara Carinci 727-381-1786
Island Community Theatre [website](#) 727-345-1474
Island Community Theatre - Jeff Jensen 727-345-1474
Gulfport Community Players [website](#) 727-322-3016
Salerno Theatre [website](#) 813-926-9175

TIME RECORDING EQUIPMENT

Time Systems [website](#) - Barry Rubin 727-898-8463

TITLE COMPANIES

Fidelity National Title - Michele Nixon 727-432-1363
Gulfport Central Title - Lulu Hunter 727-384-5858
Somers Title Company 727-497-5000

TOURS

Tampa Bay Ghost Tours [website](#) 727-398-5200

TRAINING, SEMINARS & DEVELOPMENT

Statsdocs, Inc [website](#) 727-776-4976

TRAVEL AGENCIES

Gulfport Travel & Cruise - West Dupes 727-345-5856

TREE SERVICE

Coppola's Tree Service - Arborist - Tim Coppola 727-322-0890

[back to the top](#)

UPHOLSTERERS**UTILITY COMPANIES**

Progress Energy 800-700-8744
All Nancy Loehr [website](#)

VETERINARIANS**VISITOR'S GUIDE**

Paradise News - Pete & Renee Roos 727-363-6888

VITAMINS & FOOD SUPPLEMENTS

Shaklee [website](#) 727-804-1385

WEB DESIGN & INTERNET MARKETING

-CarlsonWebs - Deb Carlson [website](#) 727-432-8409

WEDDING CHAPELS & CEREMONIES

Helen's Wedding Chapel, Helen Davis 727-323-2830

[back to the top](#)

WELLNESS PRODUCTS

Pharmanex - Pat Dunham [email](#) 727-224-9771
Shaklee [website](#) 727-804-1385

WELLNESS PROGRAMS

Extraordinary Beingness 727-327-6149
Nexagon, USA 727-403-0460
Shaklee [website](#) 727-804-1385

YACHT SALES

Gerry Clapp [website](#) 727-744-3055



-
- This is a detailed street map of the Gulfport area in Mississippi. The map shows a grid of streets with major thoroughfares highlighted in yellow, including 15th Ave S, 22nd Ave S, and Gulfport Blvd S. Other labeled streets include Newton Ave S, 14th Ave S, 16th Ave S, 17th Ave S, 18th Ave S, 19th Ave S, 20th Ave S, 21st Ave S, 23rd Ave S, 24th Ave S, 25th Ave S, 26th Ave S, 27th Ave S, 28th Ave S, 29th Ave S, 30th Ave S, Beach Blvd S, 54th St S, 55th St S, 56th St S, 57th St S, 58th St S, 59th St S, 60th St S, 61st St S, 62nd St S, 63rd St S, 64th St S, 65th St S, 66th St S, 67th St S, 68th St S, 69th St S, 70th St S, 71st St S, 72nd St S, 73rd St S, 74th St S, 75th St S, 76th St S, 77th St S, 78th St S, 79th St S, 80th St S, 81st St S, 82nd St S, 83rd St S, 84th St S, 85th St S, 86th St S, 87th St S, 88th St S, 89th St S, 90th St S, 91st St S, 92nd St S, 93rd St S, 94th St S, 95th St S, 96th St S, 97th St S, 98th St S, 99th St S, 100th St S. The map also shows the Gulf of Mexico to the west and Clam Bayou to the east. Four locations are marked with red pins and labeled with letters: F is located near the intersection of 24th Ave S and 54th St S; B is located near the intersection of 28th Ave S and 54th St S; E is located near the intersection of 28th Ave S and 55th St S; and I is located near the intersection of 28th Ave S and 56th St S. The map is credited to Google and NAVTEQ.

Enjoy Florida's Own

Photos of the
9th Annual
'Cathy' Award
Winners
June 17, 2006



Gulfport Community Players

A Not-for-Profit Community Theater Group

Upcoming Auditions

Foxfire Jan. 15th & 16th,
2007 7 p.m. @ Back Door Theater

"Savor the Magic of Live Theater"

How about a Theater Trip to London?
See article below!

Click here to add your text.

Opens next Thursday!

Gulfport Community Players
Present
Ken Ludwig's Comedy
Lend Me A Tenor
Directed by Judy Ryerson Produced by Frank Hale
January 18-February 4, 2007
Thursday, Friday, Saturday at 8:00
Sunday at 1:30
Three Week Run
Tickets are \$15.00 (Students \$10.00) and are available at Beach Bazaar, Eileen's Resale Boutique, Gulfport Casino, and the Gulfport Chamber of Commerce or call 727-322-0316
Catherine A Hickman Theater
Gulfport, FL
Presented with special arrangements with Samuel French, Inc.

By special arrangement with Samuel French, Inc.

Get your tickets **NOW** at Eileen's Resale Boutique, the Beach Bazaar, Gulfport Casino, Gulfport Chamber of Commerce, or call 727-322-0316.

Play dates and times

Jan. 18, 19, 20, 25, 26,
Feb. 1, 2, & 3rd, 2007
at 8 p.m. (Thurs, Fri, Sat)

Jan. 21, 28, Feb. 4th,
2007
at 1:30 p.m. (Sundays)

Adults \$15 each
Students \$10 each

Meet the cast

Michael Crockett, as Tito
Eileen Navarro, as Maria
David H. Smith, as Mr. Saunders
Jeanne Smith, as Julia
Rhannon Mooney, as Maggie
Ron Rotondo, as Max
Michelle Long, as Diana
Frank Hale, as the Bell Hop

Welcome Page

A Little About Us

How Do We Do It?

Future Productions & Audition Notices

Members, Volunteers, & Our Building Fund Angels

Back Door Theater

Past Performances

Helpful Links

Hickman Theater Opening

"6th Summer 1 Act Festival" Dress Rehearsal Photos

"Loot" Rehearsal Photos

"Ravenscroft" Dress Rehearsal Photos

"Cat on a Hot Tin Roof" Dress Rehearsal Photos

Click here to add text. "Da" Rehearsal Photos

"I Hate Hamlet" Photos



Jeanne Smith, Rhannon Mooney, David Smith, & Frank Hale



Rhannon Mooney, Michelle Long, Eileen Navarro, & Jeanne Smith



Michael Crockett & Eileen Navarro



David Smith, Ron Rotondo, & Michael Crockett

The Gulfport Community Players are sponsoring a **Theater Trip to London**, to be offered February 6-13, 2007. This trip will include flight by British Air from Tampa to Gatwick, transfers to and from the hotel, six nights double occupancy at the Hotel Tavistock in the Bloomsbury area, and daily breakfasts. Participants will select the plays they wish to see and will have access to daily discounted theater tickets. Escorted trips to see the **Elgin Marbles** at the **British Museum** and the **Turner Paintings** at the **Tate Gallery** will be available, as well as other museum trips or excursions upon request. The group will be escorted by Dr. Helen Parramore, retired professor of Art and Humanities. This travel opportunity will benefit the **Gulfport Community Players' Building Fund**.

The total cost of the trip is \$1500 per person, double occupancy. \$1035 is due upon sign-up with Elaine Partington at **Gulfport Travel & Cruise**, located at 5812- 28th Avenue South, in Gulfport. The remaining \$465 should be paid to the Gulfport Community Players by January 2, 2007. **Prices are subject to change without notice and, space is limited!** For more information, call Dr. Parramore at 727-865-8621.

At our own Back Door Theater

Dracula: The Death of Nosferatu

Adapted by Christopher P. Nichols

Play dates: October 27, 28, & 29th, 2006

Director: Collyn Lockamy

2006 - 2007

Upcoming Mainstage Season Schedule

(Performed at the Hickman Theater)

***Loot*, a dark comedy by Joe Orton**

Play dates: November 9 - 19th, 2006

Audition dates: September 11 & 12th, 2006

Director: Frank Hale

***Lend me a Tenor*, a farce by Ken Ludwig**

Play dates: January 18 - February 4th, 2007

Audition dates: November 13 & 14th

Director: Judy Ryerson

***Foxfire*, a drama by Susan Cooper & Hume Cronyn**

Play dates: March 8 - 25th, 2007

Audition dates: January 15 & 16th, 2007

Director: Ed Stevens

***Scapino*, a comedy by Frank Dunlop & Jim Dale**

Play dates: May 10 - 20th, 2007

Audition dates: February 26 & 27th, 2007

Director: Bill Rucker

***7th Summer One-Act Festival*, by many playwrights**

Play dates: July 12 - July 22nd, 2007

Audition dates: to be announced

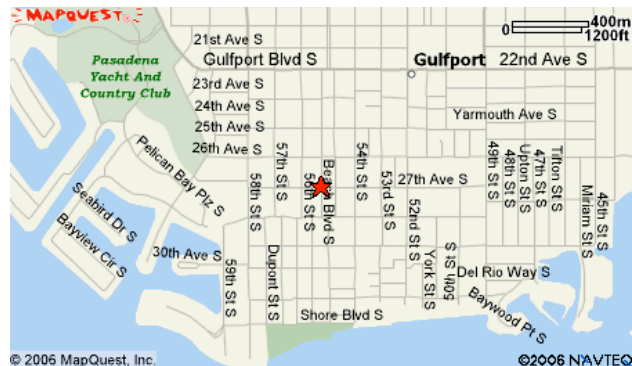
Directors: Assorted

Catherine A. Hickman Theater of Gulfport



**5501- 27th Avenue
South
Gulfport, Florida**

How to get to the theater



Catherine A. Hickman Theater
5501- 27th Avenue South
Gulfport, FL 33707

All of our mainstage productions are currently performed at the Catherine A. Hickman Theater of Gulfport. This theater is entirely owned and operated by the City of Gulfport, Florida. It is located at 5501- 27th Avenue South in Gulfport, FL. We rent this theater for our performances from the City.

Theater rental rates may be obtained from the City of Gulfport by contacting Gulfport's Events Supervisor, Gail Kelley, at: gkelley@ci.gulfport.fl.us

**2005-2006
Board of Directors**

Eileen Navarro, President
Judy Ryerson, Vice-President
Julius Brock, Interim Secretary
Roger Turner, Treasurer
Carol Polk
Cathy Culler
Donna Adell
Helen Parramore
Frank Hale
Miki Vaughan, Facilities Chair
Bill Rucker, Funding/Marketing

Mailing Address:

Gulfport Community Players
4919 - 17th Avenue South
Gulfport, Florida 33707

E-mail to:

basia@mindspring.com

For ticket information,
call 727-322-0316

Chartered by the State of Florida

In November, 1981, the State of Florida granted a Charter to the Gulfport Community Players, Inc., designating us as a Not-for-Profit organization. As of Dec. 2003, we now have 501(C)(3) tax status.

We are a completely separate entity from the City of Gulfport, but we do, however, rent the Catherine A. Hickman Theater of Gulfport for our mainstage performances.

Copyright 2007 Julius P.
Brock
Gulfport Community Players

E-mail to:
basia@mindspring.com

3 2 9 6 7

[Gulfport, FL](#) 76°F
[January 14 2007 12:53 PM \(more\)](#)



We go there.

The Gabber is Pinellas County 's longest-running weekly newspaper, serving the Southern Pinellas communities for nearly 40 years! Available at over 300 drop-off locations every Thursday, **the Gabber** is your source for local news, community events, in-depth feature stories, and the most extensive classified section of any weekly newspaper in the area.

The Gabber is an independently-owned, free community resource, offering custom advertising for any budget. Pick up your copy today, or call **the Gabber** office for more information!

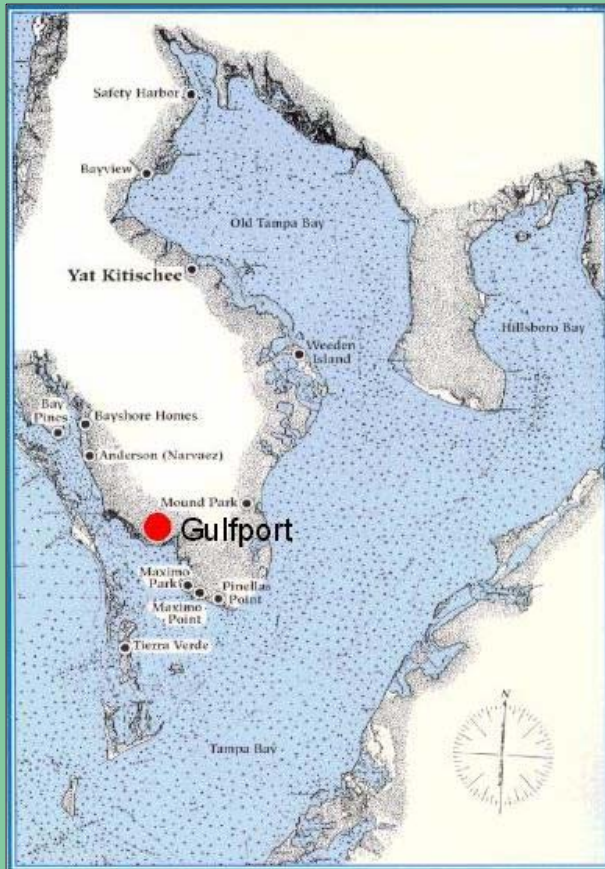


the Gabber
Since 1968

News@theGabber.com | Advertising@theGabber.com | Publisher@theGabber.com
the Gabber • 1419 49th Street South, Gulfport, FL 33707-4301 • 727-321-6965 • fax 327-7830
copyright©2003 the Gabber • All Rights Reserved

City of Gulfport

Rediscovering Our Past



Florida has a rich and fascinating cultural heritage; Gulfport shares that heritage. Beneath the paths we travel each day lie clues to the people who lived here long ago.

Archaeology helps to remind us that a study of the past sharpens our sense of the present.

Message from the Mayor

As we enter the start of a new millennium, this is an appropriate time to reflect on our cultural past. Some 12,000 years ago, the Gulf Coast was inhabited by natives referred to as hunters and gatherers. The area was impacted by Spanish and British expeditions in the 16th and 17th centuries. The first settlers established homes in heavily wooded areas along the Gulf of Mexico Bay. We have been influenced by visionaries such as the early 20th-century Captain John Chase. After World War II, Gulfport experienced rapid construction of residential and commercial structures. The city of the current generation only represents a small period of our rich and fascinating cultural heritage.



Our city continues to change based on the needs and desires of its citizens. As we continue to make improvements to our infrastructure, we are preserving our rich and fascinating cultural heritage. I believe that Gulfport has a bright and successful future based on the enthusiasm that exists today in our community.

I would like to recognize the members of Gulfport City Council for their service to our city: Vice-Mayor John E. "Ted" Phillips and Councilmembers Jack B. Olsen, Lynne Brown and Larry Cooper.

Michael J. Yakes, Mayor
City of Gulfport

Message from the Chairman

I would like to encourage you to study the rich history of our community. There is much to learn from the time period of our native people, the influences of the Spanish and British colonists and our early settlers. As technological changes continue to affect our lives, our cultural past should not be forgotten.

Gulfport City Council established the Historic Preservation Committee in 1994 for the purpose of protecting and preserving archaeological resources. The committee was created by the Florida State Legislature in 1997 by having expertise in archaeology and land use planning.



I would like to recognize the members of the committee for their contribution to this publication: Mary Atkinson, Jo Arras, Elizabeth Neily and Kenneth Stanton. Also, thank you to the Planning and Development Supervisor.

Emmett Walsh, Chairman
Historic Preservation Committee

What Is Archaeology?

Archaeology is the study of past cultural behavior, from the beginnings of the human species to events that happened yesterday, through the material remains, or *artifacts*, that people leave behind. By carefully applying scientific techniques in excavation and analysis of their findings, archaeologists attempt to reconstruct past lifeways and understand why different customs developed and evolved.

Archaeologists also hope to gain a better understanding of the native Floridians as a people. To do this, they try to assemble clues that help answer questions about their religious beliefs, political systems and family structures. Unfortunately, games, jokes, songs, and dances do not preserve in the ground. To help flesh out the details of prehistoric life, archaeologists use historical documents that describe native cultures at the time of Spanish contact and *ethnographies* of contemporary traditional societies in places like Africa, Australia and South America. These provide insights into the kinds of social behaviors that might have been practiced in the past by people possessing similar levels of economic and political development.



Field Archaeologist

Why Study the Past?

Throughout Florida, native people have had to solve everyday problems that confront people everywhere – the necessities of obtaining food and shelter, protection from the elements, and learning to coexist with family members and neighbors. Because areas were occupied for over 1000 years, people also had to respond to long-term problems such as increases in population, the depletion of resources and climatic change. Through archaeology, we come to understand that there are many different ways of dealing with these problems and we gain an appreciation for the variety of customs, beliefs and lifestyles that are present within the human species.

What Is Culture?

Culture is the set of ideas, beliefs, customs and behaviors that are shared by a people living in a specific place and time. Human beings are born with the capacity for creative thought and communication using symbols. But we are not born with culture - we acquire it from our parents and our social peers. Thus, another important component of culture is that it is transmitted from one generation to the next through a complex learning process. Other species possess some of the behaviors that we associate with culture, such as the ability to use simple tools, to communicate with one another, and some forms of social behavior. But none have developed these to the extent that human beings have. The sophisticated development of cultural behavior is our unique adaptation.



The Limitations of Archaeology

One part of native life that is difficult to reconstruct from archaeological evidence is the way that people perceived their world and their place in it - in other words, their belief systems. In traditional societies, many aspects of daily life are invested with a spiritual character. To the extent that these spiritual beliefs were manifested in behaviors that left behind material remains that can be interpreted accurately, archaeologists can attempt to reconstruct them. But we will never be completely successful. That is why it is important to work with and learn as much as we can from traditional people living today, so that we can bring their perspectives to bear on understanding the intricacies of past cultures.



Native American Culture

The native people who lived in what is now Gulfport and Pinellas County were associated with a prehistoric culture known as Manasota. This culture extended geographically from present day Sarasota County north to Tampa Bay. The Manasota culture evolved from the earlier **Archaic** cultures of mobile hunters and gatherers that began settling permanently along the West Coast of Florida around 3000-4000 B.C. These Archaic peoples were themselves descendants of Florida's first inhabitants, known to archaeologists as **Paleo-Indians**, who arrived here 12-14,000 years ago.



Unlike their Paleo-Indian and Archaic ancestors, the people of the Manasota culture were fully adapted to a coastal environment, and their archaeological sites contain artifacts and other features that reflect this adaptation. Manasota settlements are located in *hammocks* near bays and estuaries providing access to fish and shellfish, as well as terrestrial plants and animals in the nearby pine flatwoods and in freshwater streams and ponds.

Each settlement appears to have contained a few related families. When people died, they were buried near their home or in cemeteries located near the settlement. The absence of grave goods or any indication of differential treatment in death suggests that Manasota society was relatively egalitarian. Leadership in the community was probably based on individual ability and was acquired rather than inherited. Villages in a region may have been integrated through marriage or trade networks.



By approximately 200 A.D., Manasota people adopted some of the religious, ceremonial and mortuary practices that were being practiced by neighboring cultures to the north. Archaeologists call this set of shared customs **Weeden Island** after the type site in St. Petersburg where their archaeological manifestations were first identified. There is some confusion about what Weeden Island is, or was, and not even archaeologists can agree on every detail. Basically, Weeden Island consisted of a set of religious beliefs and associated rituals that helped people make sense of their world. Just as today people of different cultures sometimes share a common religion such as Hinduism or Catholicism, prehistoric peoples in north and west-central Florida adopted the

religious and ceremonial practices of Weeden Island while retaining their local traditions of subsistence, family structure, technology and social organization. The primary archaeological manifestation of this new ceremonialism was the use of sand burial *mounds* and the placement of ornately decorated pottery with the dead.

Around A.D. 900, another change took place - the emergence of the final prehistoric culture in the Tampa Bay area - Safety Harbor. This time the source of influence was from much farther away - the Mississippi Bottoms of the American Midwest. Here, new political and ceremonial practices developed in response to increased population and the need to develop management measures to safeguard against famine and warfare. Safety Harbor society was highly stratified, with a noble class, warriors, slaves and peasants. Politics and religion were closely related, and political rulers were often believed to be gods who demanded respect and tribute in return for ensuring peace and prosperity.

A hierarchy of site types reflects the unequal status of people within Safety Harbor society. Large ceremonial centers with flat-topped *temple mounds* were home to *caciques*, or supreme rulers, whose domains encompassed several smaller towns and hamlets. One of these temple towns, Tocobaga, was located at Phillipi Park near the modern town of Safety Harbor. Lesser rulers resided in smaller towns and collected tribute from the still smaller villages and hamlets that dotted the landscape. The local rulers kept some of this tribute, and the rest was passed on to the supreme cacique. The territory of Tocobaga (part of which is depicted on the map on the front cover) included the temple towns at Pinellas Point, Maximo Point, and the Anderson site on Boca Ciega Bay.



Early Settlement

- **First Spanish Colonial Period (1513-1763)**

During the 16th century, the Tampa Bay area was visited by a number of Spanish expeditions. The first of many official expeditions in Florida started in the Tampa Bay area and was conducted by Pánfilo de Narváez in 1527-28. The next was that of Governor Hernándo de Soto which used Tampa Bay as its landing site. Both expeditions eventually failed as they proceeded to the north with few survivors.

In October of 1565, Governor Pedro Menéndez established Jesuit Missions along the coast of Florida, including the mission of Carlos at Charlotte Harbor and the mission of Tocobaga at Tampa Bay. In March of 1567 Menéndez sailed into the Bay of Tocobaga (now Old Tampa Bay) with a group of about 30 soldiers, Captain Martinez de Coz, and Fray Rogel. The mission was established at the village of the cacique of Tocobaga and consisted of 24 houses. The failure of the Jesuit mission at Tocobaga was the last attempt by the Spanish to colonize the Tampa Bay region.

- **British Period (1763-1783)**

With the Treaty of Paris in 1763, Spain agreed to cede Florida to England. The land that England received included the Florida peninsula and a contiguous strip stretching west to the Mississippi River. The English divided this territory into two parts, east and west, due to a decision that such a vast domain could not be administered effectively from one capital. The peninsula was included in the royal province of East Florida, with its capital at St. Augustine. Pensacola was West Florida's administrative center. The British made no effort to settle the central Gulf Coast during their brief control of Florida in the 18th century and ceded Florida back to Spain in 1783.

- **Second Spanish Colonial Period (1783-1819)**

During the Second Spanish period, a trading post was established on the eastern shore of Tampa Bay by Captain Vicente Folch y Juan. In 1793 a small garrison of soldiers and merchants manned this post for less than one year. Eighteenth century reports by the Spanish and British coastal mapping expeditions mention encounters in the Tampa Bay area with Indians but it is not clear whether they were Seminole or "Spanish Indians" (Calusa, Tocobaga, or Muscogulge Indians). It is possible that small populations of both groups lived in the region at this time.

During the eighteenth century Cuban fishermen also established seasonal fish camps or ranchos along the coast. These fishermen were engaged in catching mullet and drying them for sale in the Havana markets. By the early nineteenth century, the Spanish Indians were often employed as workers in these fish ranchos, hence the origin of their name in Anglo-American documents.

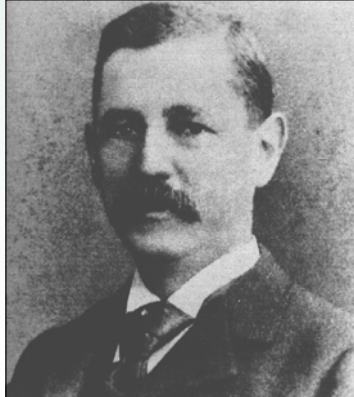
- **Territorial to Civil War Period (1819-1865)**

The 1840 U.S. Census of Hillsborough County shows only two residents living in what is now Pinellas County, Antonio Maximo Hernández and Odet Philippe. Hernández operated a fish rancho located on Maximo Point, and Philippe homesteaded 122 acres in Safety Harbor in the late 1830s. By the mid-1840s fisherman John Levick and Joseph Silva were living in the Jungle area on Boca Ciega Bay, and William Papy was living in Papy's Bayou. Captain William Bruce, a native of Maryland and former resident of Key West, relocated his large fish rancho to Cabbage Key in 1835. His first rancho at the mouth of the Manatee River had been shelled and burned by Federal gunboats in 1834. Federal gunboats destroyed the rancho on Cabbage Key in October of 1840.

The Armed Occupation Act of 1842 offered settlers 160 acres of land at no cost, provided they built a house, cleared five acres, planted crops and resided there for five years. This act, plus the end of the Second Seminole War, created a small wave of immigration by Anglo-American pioneers to Central Florida. The Pinellas peninsula, however, increased very little in population during the 1840s. The 1850 U.S. Census indicates that most of the County's residences were engaged in fishing for a livelihood.

- **Reconstruction to Spanish-American War Period (1865-1898)**

Unlike the rest of the South, the post-Civil War era in Florida and the Pinellas peninsula was a period of growth and optimism. During the 1870s, the population steadily increased, and small rural trading centers like Clearwater, Bayview, Anona, and Green Springs acquired post offices and schools. Open range cattle ranching and commercial fishing were still the economic mainstays of the region, but new settlers experimented with new crops, especially citrus. The Pinellas peninsula had two tenuous communication routes with the outside world: the Old Tampa Road, a rough wagon trail to Tampa, and the small coastal schooners that plied the Gulf between Key West and Cedar Key. Havana and Key West were the principal markets for local produce.



Hamilton Disston

The events of the 1880s were a watershed in the development of Gulfport as well as Pinellas County. The first settlers of Gulfport were Captain James Barnett and his wife Rebecca. They built a house near the shoreline in 1867. Other notable settlers included Joe Torres and William Bonafacio Miranda. Gulfport was originally named Bonafacio until the Disston Land Purchases in 1881. Hamilton Disston purchased approximately 150,000 acres of land in southern Pinellas County and platted 25 square miles named Disston City. This new city was to have a population of 50,000 persons and included the 26 room hotel named The Waldorf. The waterfront area of present-day Gulfport was part of the Disston City development. In 1886, the population of Disston City was 150 persons.

Disston needed a railroad into the Pinellas peninsula, and Peter Demens and his proposed Orange Belt Railroad was his only chance of achieving this goal. In 1888, the completion of the Orange Belt Railroad gave rail service to St. Petersburg but did not include Disston City. This turn of events made Disston City only accessible by water, with service being provided by the steamship named Mary Disston. In 1892, the Mary Disston caught fire at the dock and was set adrift to sink out in the bay. With limited access and few visitors, Disston City entered into a period of decline and the population also decreased.

- **Spanish-American War to County Formation Period (1898-1912)**

The Spanish American War had little economic impact on Pinellas County. However, a large V-shaped island at its southern terminus did figure prominently in the nation's coastal defense system. Mullet Key, and Egmont Key, its sister key to the south, had long been regarded as vital to the protection of Egmont Channel, which provided access to Tampa Bay and the port facilities of Tampa. The advent of the Spanish-American War in 1898 led to the construction of coastal fortifications at both Mullet and Egmont keys. The Mullet Key military reservation was named Ft. DeSoto after the famous Spanish explorer. The war was short lived, and no shots were fired from Ft. DeSoto.

The Pinellas peninsula increased dramatically in population during the early 1900s from 2,572 in 1900 to 8,057 in 1910. Census data shows that the majority of the increase took place in urban areas. The growth of the peninsula meant a need for county services and road building that was ignored by the courthouse in Tampa. The movement for separation of Pinellas from Hillsborough County began in 1906. The issue went to a public referendum vote in 1911, and voters overwhelmingly approved the creation of a new county for the peninsula. Pinellas County became a legal entity on January 1, 1912.

During the early 1900s, an electric trolley was extended from St. Petersburg to present-day Gulfport. As a result, the area became attractive as a tourist destination, in addition to its status as a fishing village. In 1904, Captain Chase planned a retirement community for Civil War veterans, and Disston City became known as Veteran City. Large plots of land were developed adjacent to the trolley line, and major developments, such as a pier and casino, were constructed. A sawmill named Singlehurst Mill operated in this time period and helped clear the wooded areas of the city as well as producing lumber and related products. Veteran City did not attract the retirees as planned, and by October 12, 1910 a new town was incorporated under the name of Gulfport.

- **World War I to World War II (1913-1945)**

The outbreak of war in Europe in 1914 slowed development in the county, and American entry into World War I in 1917 ended the first boom period in Pinellas. During this period, however, important infrastructure projects were completed that made the post-war boom possible. The Seaboard Air Line Railroad, which provided connections with major cities in Florida, built a new line into the county between 1913 and 1915. Between 1914 and 1917 the county built 75 miles of nine foot wide brick roads that linked the areas main towns. These were the first paved roads in Pinellas. Gulfport had a number of subdivisions platted and developed up to 1917, including the main residential areas that are adjacent to the present-day waterfront area.

The Florida land boom of the 1920s had a dramatic impact on the county. The county as well as the state was described as having a healthful climate and a place to purchase inexpensive land. The population increased from 28,265 in 1920 to 62,149 in 1930. The boom's impact did little to change the rural unincorporated areas of Pinellas. The unincorporated area had a population of 7,533 in 1920 and 5,033 in 1930. The decrease was due to annexation by cities during this decade. Life in rural Pinellas improved in this era, but the basic agricultural pattern of citrus growth and cattle ranching remained the same.

In 1923, Gulfport's population was estimated at 300 persons. The city tripled in population to approximately 1,000 persons by 1928. It was during this period that many of the brick paved roadways were constructed and the Rolyat Hotel (now Stetson University Law School) opened. The end of the land boom marked the beginning of the Great Depression in 1929 and Gulfport entered into another period of decline. A reduced population of 851 persons was estimated in 1930. Toward the end of the Great Depression, "new deal" federal programs were utilized to improve services within Gulfport, such as drainage systems, water service and reconstruction of the casino. By 1940, the population of Gulfport rose to approximately 1,581 persons.

- **World War II to Present (1946-1999)**

The urbanization of the county and the city began after the second world war as the population dramatically increased. In 1950, the county increased in population to 160,000 persons and further increased to over 500,000 persons by 1970. In 1950, the population of the city was 4,750 persons and in 1970 it increased to 9,730 persons. Following the war and up to 1970, changes occurred such as the construction of roadways, churches, schools, parks, city government facilities, commercial establishments, apartment complexes and residential neighborhoods. The mass production era of automobiles and household items also influenced the character of the county and the city. As the national economy slowed down in the 1970s and 1980s, the county and the city followed the trend of recession and urban decline. By the early 1990s, the city began renewal efforts to revitalize areas and re-establish vitality to residential and commercial areas. With a strong economy in the late 1990s, the county and the city continues to slowly change based on present day culture, new technology and national trends. The population of Gulfport in 1999 is estimated to be 12,600 persons with nearly built-out conditions for the area.

Florida Steamships and the Mary Disston

In the late 19th century, the steamship was key to the development of Florida. For Gulfport to become an important part of Florida's future, Mr. Disston needed a steamship to bring passengers and freight to his new city. The Mary Disston was built in Pittsburgh in 1885 as a riverboat and for a time served in that capacity on the Kissimmee River. Later becoming the critical link between Gulfport and the main rail terminus for the West Coast of Florida in Cedar Key, the Mary Disston was the lifeblood of Hamilton Disston's dream city. The ship was named after Mr. Disston's mother. However, it was also affectionately known as the Dirty Mary due to the dense smoke coming from her smokestacks.

The steamships that served in Florida's waters were similar in appearance to the grand riverboats that operated on the Mississippi River. However, due to the unique environmental conditions found in Florida, our ships were different in a number of important ways. First, to navigate rivers and waterways that were much smaller than the Mississippi, Florida ships needed to be diminutive in comparison. The smaller size also meant the ships were more maneuverable. This was important since most rivers in Florida were relatively narrow and, often, had sharp turns that could not be navigated by larger vessels. Tree branches hanging low over Florida rivers could also spell trouble for the exposed paddlewheels of conventional steamships. To eliminate this danger, ships such as the Mary Disston had enclosed paddlewheels. The paddlewheels were different in their placement as well. Traditional ships had the paddlewheels at the very rear of the ship; steamships in Florida generally followed a design where the wheel was recessed into the body of the ship. Water escaped through doors at the rear of the ship and passed a rudder that extended behind the ship and provided excellent maneuverability. Finally, a shallow draft allowed steamships to navigate Florida's waters and ever-changing sandbars.

What had begun as a dream had grown into a promise, and that promise was on its way to becoming reality when disaster struck in 1892. The Mary Disston caught fire, burned and sank in a moment that transformed Mr. Disston's vision into an uncertain future. The Mary Disston had provided Florida's first regularly scheduled steamship service, and without a reliable link to the outside world the future of Disston's dream had been cast into doubt.



Preserving the Past

Florida has a rich and fascinating cultural heritage that is at least 12,000 years old. Unfortunately, it has been estimated that within twenty-five years Florida's prehistoric archaeological sites will all be damaged or destroyed. Whether by construction, development or vandalism the impact is the same - the loss of Florida's unique archaeological record. When a site is damaged, large chunks of information are lost forever. Imagine viewing the Mona Lisa with pieces of the canvas missing or reading Moby Dick with every third page torn out. The information can never be replaced because the remarkable cultures that created these sites are gone, and the people left no written records. This is why archaeological sites are referred to as "non-renewable resources". They are the only evidence we have of these people ever having been here. We should all cherish Florida's and Gulfport's archaeological heritage and protect it for future generations as a source of knowledge and inspiration.

Why Should We Preserve Archaeological Sites?

Archaeologists acknowledge that their science is still young and growing. Methods used for excavation only twenty years ago are considered inadequate today. It is therefore reasonable to assume that today's methods will be improved upon as technology advances. This is why archaeologists like to leave intact a portion of each site they work on for future archaeologists to excavate.

There is another reason to preserve sites. Archaeology is more than just an arcane science or a nostalgic look into the past. Its true worth lies in its ability to develop in us a respect for people and cultures different from our own. Preserving archaeological sites helps preserve a major source of evidence documenting the diversity of cultures that have existed since humans first walked the earth.

Further Information

Our Story of Gulfport: a historical perspective completed in 1985 in which numerous citizens discuss their knowledge of churches, buildings, service organizations and what makes Gulfport unique.

Gulfport Historic Buildings Survey: a comprehensive survey completed in 1992 identifying over four hundred buildings that contribute to the fabric of the city. Building styles include frame vernacular, bungalow and mediterranean revival.

Gulfport Archaeological Survey: a comprehensive survey completed in 1999 identifying nineteen sensitivity zones, seven archaeological sites and details about the sunken steamship Mary Disston.

Gulfport Web Site: <http://www.ci.gulfport.fl.us>

This publication produced by **Janus Research**, a Cultural Resources Management firm located in St. Petersburg, Florida.
2935 First Avenue North 33713


[Expand All](#) | [Collapse All](#)

Home
Live GTV15 Webstream
Most Requested Pages
Casino and Theater
Your Government
City Departments
Online Payments
City Events Calendar
Special Documents
Contact Us
Search and Special Links

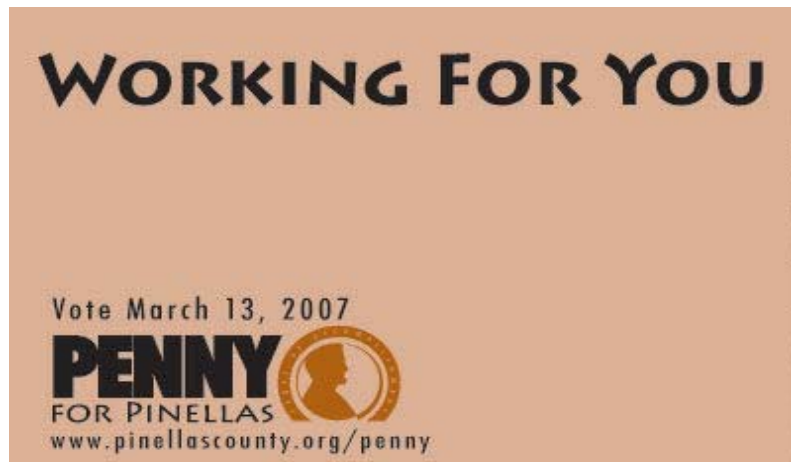
City of Gulfport Flor

Gateway to the Gulf

Welcome to the Official Site of City of Gulfport Florida

[Current Watering Restrictions](#)

[Surface water quality improvement j](#)



Mission Statement

The City of Gulfport is established for the benefit of its citizenry for the health, welfare and safety of those collective persons. The City is devoted to improving the City's appearance, maintaining public infrastructure, and ensuring citizen safety and quality of life through a system of citizen involvement and input. Moreover, the City's administration of laws and ordinances governing individual acts is the intention of the City not to be an obstacle, but to be a viable solution to problems and individual needs.

Our Address

**2401 53rd Street South
Gulfport, FL 33707
(727) 893-1000
(727) 893-1005 Fax**

[General comments/questions](#)

Under Florida law, e-mail addresses are public records. If e-mail address released in response to a public-records electronic mail to this entity. Instead, contact this office b



Register for City of Gulfport email updat

Sign up

Saint Petersburg, FL

[Get the 10 day forecast](#)



63°F

Partly Cloudy

Feels Like: 63°F

Humidity: 84%

Wind: NE at 16 mph

Enter city/zip



[Download Desktop Weather](#)

[Local Courses](#)
[Golfing Maps](#)
[Sporting Events](#)

[City Employees](#)

Copyright © 2007 City of Gulfport Florida . All Rights Reserved.

City of Gulfport
2401 53rd Street South

ARTICLE I. THE CORPORATION

Section 101. Creation.

The inhabitants of the City of Gulfport, Florida, within the boundaries hereinafter designated, or within such boundaries as may hereafter be established, shall continue to be a municipal body politic and corporate in perpetuity, under the name of the City of Gulfport, which shall have all governmental, corporate and proprietary powers to enable it to conduct municipal functions and render municipal services, and may exercise any power for municipal purposes except as otherwise provided by law; and this charter shall be known and may be cited as the "Council-Manager Charter of Gulfport".

Section 102. Powers.

The powers of the City of Gulfport shall be construed liberally in favor of the city, limited only by the Florida Constitution, general law and specific limitations contained herein. Future special acts pertaining to the jurisdiction and exercise of powers by this city shall be considered amendments to this charter and, pursuant to the provisions adopted for incorporation of other charter amendments, shall be incorporated as official amendments to the charter.

(Ord. No. 97-2, § 1, 1-21-97)

Section 103. Extraterritorial Powers.

The city may acquire property within or without its corporate limits for any city purpose in fee simple or lesser interest or estate, by purchase, gift, devise, lease or condemnation, and may sell, lease, mortgage, hold, manage and control such property as its interests may require. Provided, however, that no lease in excess of a period of ten (10) years shall be entered into prior to the enactment of an ordinance duly authorizing same, but in no event shall any lease exceed a period of thirty (30) years. Any sale of real property in excess of one-half (1/2) acre, or located outside the city's territorial boundaries, shall be submitted to a referendum of the electors of the city, and no such sale shall be valid unless approved by a majority of those voting thereon.

(Ord. No. 85-26, § 1, 1-7-86; Ord. No. 97-2, § 2, 1-21-97)

ARTICLE II. CORPORATE LIMITS

Section 201. Description of Corporate Limits.

The territorial boundaries of the City of Gulfport shall be as follows:

Commencing at the center of Section 34, Township 31 South, Range 16 East, as a Point of Beginning, run thence North 89°48'28" West along the South line of the Northwest 3/4 of said Section 34 to a point described as lying 1,659.95 feet along said South line of the Northwest 1/4 of Section 34 Easterly of the West 1/4 corner of said Section 34; thence run South 00°18'39" West, a distance of 208.64 feet; thence run South 45°05'19" West, a distance of 554.68 feet; thence run along the arc of a curve to the left, having a radius of 711.26 feet, a central angle of 45°06'26", arc distance of 559.95 feet; thence run along the arc of a curve to the right, having a radius of 1,040.00 feet, a central angle of 45°06'26", arc distance of 818.76 feet; thence run South 41°48'46" West to the intersection of said course with the established common city limit of St. Petersburg; thence run South 45°00'00" West to the center of Section 4, Township 32 South, Range 16 East, such center located in the waters of Boca Ciega Bay; thence Westerly along the East-West center line of said Section 4 to the West boundary of Section 4; thence continue Westerly along said center line extended 357.00 feet, more or less, to a point in the waters of Boca Ciega Bay; thence run North 00°20'00" West, a distance of 3,320 feet more or less; to a point on the traverse line per Deed No. 17412, Trustees Internal Improvement Fund, State of Florida; thence along said traverse line the following eight courses; (1) North 80°41'52" West, a distance of 939.45 feet; (2) North 86°07'27" West, a distance of 495.25 feet; (3) North 62°47'19" West, a distance of 485.99 feet; (4) North 62°59'34" West, a distance of 501.36; (5) North 68°04'07" West, a distance of 459.54 feet; (6) North 68°36'24" West, a distance of 474.17 feet; (7) North 81°36'36" West, a distance of 332.34 feet; (8) North 80°04'06" West, a distance of 453.48 feet; thence North 26°33'38" West, 54.50 feet; thence North 39°59'40" East, 6.59 feet; thence run North 26°42'06" West, 2,283.20 feet; thence run North 53°51'09" East, 1,022.31 feet; thence run along a curve to the left, having a radius of 160.00 feet, arc 351.33 feet, chord North 08°51'09" East, 226.27 feet; thence run North 36°08'51" West, 730.00 feet; thence run along a curve to the right having a radius of 50.00 feet, arc 73.06 feet, chord North 05°42'41" East, 66.73 feet; thence run along a curve to the left a radius of 4,050.00 feet, arc 887.15 feet, chord North 41°17'43" East, 885.37 feet; thence run South 53°02'33" East, 200.00 feet; thence run North 36°57'27" East, 50.00 feet; thence run North 36°57'27" East, 261.90 feet; thence North 02°38'24" East, 125.00 feet to the Northeast corner of Lot 15, Block 1, Pasadena Golf Club Estates, recorded in Plat Book 5, Page 8, Pinellas County, Florida; thence run North 87°21'36" West, 97.61 feet; thence run along a curve to the right, having a radius of 86.75 feet, arc 91.75 feet, chord North 57°03'34" West, 87.54 feet; thence run North 26°45'33" West, 81.71 feet; thence run along a curve to the left having a radius of 20.00 feet, arc 27.95 feet, chord North 66°47'41" West, 25.73 feet to point of reverse curvature; thence run along a curve to the right, radius 96.00 feet, arc 175.80 feet, chord North 54°22'12" West, 152.24 feet to another point of reverse curvature; thence run along a curve to the left, radius 47.50 feet, arc 59.88 feet, chord North 38°01'35" West, 56.00 feet; thence run North 74°08'36" West, 300.00 feet; thence run North 72°47'47" West, 207.65 feet; thence run North 52°16'55" West, 268.38 feet, thence run North 55°48'08" West, 217.10 feet; thence run along a curve to the right, radius 103.18 feet, arc 60.23 feet, chord North 39°03'21" West, 59.38 feet; thence North 22°20'01" West, 93.80 feet; thence along a curve to the left, radius 175.79 feet, arc 222.01 feet, chord North 58°30'42" West, 207.54 feet; thence run North 42°46'17" West, 55.78 feet to a nontangent curve concave, Southeasterly and having a radius of 280.00 feet; thence Southwesterly along said curve, 178.57 feet through a central angle of 36°32'25" (C.B. South 30°07'05" West, 175.56 feet) to a reverse curve concave Northwesterly and having a radius of 50.00 feet; thence Southwesterly along said curve 97.92 feet through a central angle of 112°12'11" (C.B. South 67°57'17" West,

83.01 feet); thence North 55°56'19" West, 136.66 feet to a curve concave Southwesterly and having a radius of 120.00 feet; thence Northwesterly along said curve, 70.95 feet through a central angle of 33°52'42" (C.B. North 72°52'40" West, 69.92 feet); thence North 89°49'02" West, 15.67 feet to a curve concave Northeasterly and having a radius of 30.00 feet; thence Northwesterly along said curve 72.67 feet through a central angle of 138°47'25" (C.B. North 20°25'18" West, 56.16 feet) to the southeasterly right-of-way line of Mockingbird Way; thence along said line North 48°58'23" East, 655.98 feet; thence run South 41°01'35" East, 199.99 feet; thence run North 48°57'38" East, 1,538.67 feet; along the Southeasterly right-of-way line of Royal Palm Drive to the centerline of an ingress-egress, and utility easement as recorded in O.R. Book 4920, Pages 1--24 of the Public Records of Pinellas County; thence along said centerline the following (2) courses: (1) South 44°01'12" East, 21.57 feet; thence (2) South 89°22'00" East, 25.92 feet; thence leaving said centerline, South 41°02'22" East, 182.52 feet to the East corner of that certain property as described in the Gulfport City Council Ordinance No. 2001-16 dated December 4, 2001; thence South 48°57'38" West, along the Southeasterly boundary of said certain property, 134.35 feet to the South corner of said certain property; thence North 86°24'21" West, along the South boundary of said certain property, 65.91 feet to the West corner of said certain property; thence South 48°57'38" East, 200.70 feet; thence South 60°43'44" West, 246.15 feet; thence South 54°36'32" West, 457.22 feet; thence run South 41°02'22" East, 92.47 feet to the Northwest corner of the Pelican Creek Village Condominiums, recorded in Condo Book 38, Pages 68--75, Pinellas County, Florida; thence along the Southerly boundary line of said condominium the following seven (7) courses: (1) thence run South 15°39'16" East, 110.72 feet; (2) thence run North 81°09'27" East, 178.00 feet; (3) thence run North 85°23'37" East, 201.95 feet; (4) thence run South 61°53'42" East, 290.59 feet; (5) thence run South 52°20'22" East, 304.49 feet; (6) thence run North 67°59'04" East, 90.36 feet; (7) thence run North 52°39'27" East, 141.67 feet; thence run South 84°49'16" East, 1,116.72 feet; thence run South 38°50'43" East, 700.00 feet; thence South 27°02'38" East, 1,166.85 feet to the West corner of that certain property as described in the Gulfport City Council Ordinance No. 2001-11 dated November 6, 2001, same being the point of intersection with a non-tangent curve concave Northwesterly and having a radius of 219.00 feet; thence along the Northwest boundary of said certain property the following three (3) courses; (1) thence Northeasterly along the arc of said curve 53.89 feet through a central angle of 14°05'53" a chord bearing and distance of North 51°05'18" East, 53.75 feet to a reverse curve concave Southeasterly and having a radius of 205.50 feet; (2) thence Northeasterly along the arc of said curve 46.83 feet through a central angle of 13°03'22" a chord bearing and distance of North 50°34'03" East, 46.73 feet to a reverse curve concave Northwesterly and having a radius of 182.50 feet; (3) thence Northeasterly along the arc of said curve 7.82 feet through a central angle of 02°27'19" a chord bearing and distance of North 55°52'04" East, 7.82 feet to the North corner of said certain property; thence South 27°02'38" East, 196.57 feet to the East corner of said certain property; thence South 62°57'22" West, 106.00 feet to the South corner of said certain property; thence South 27°02'38" East, 241.15 feet; thence South 29°54'17" East, 1,515.13 feet; thence along the Easterly boundary line of Pasadena Golf Club Estates Section One, recorded in Plat Book 36, Page 11, Pinellas County, Florida, for the following ten (10) courses: (1) thence North 26°45'44" East, along the Northwesterly right-of-way line of 59th Street South, the same being a continuation of Bau Hinia Drive, 101.07 feet; (2) thence run by a curve to the left, having a radius of 600.00 feet, arc distance 471.93; (3) thence North 18°18'16" West, a distance of 202.92 feet; (4) thence run by a curve to the right along said right-of-way line having a radius of 530.00 feet, arc distance 357.09 feet; (5) thence along a curve to the right having a radius of 280.00 feet and an arc distance of 69.99 feet; (6) thence along a curve to the left, having a radius of 25.00 feet, an arc distance of 54.39 feet to the intersection of the Westerly right-of-way line of 59th Street South and the Southerly right-of-way line of Gulfport Boulevard; (7) thence South 89°58'28" West, a distance of 12.06 feet; (8) thence run by a curve to the right along the Southwesterly right-of-way line of Gulfport Boulevard, having a radius of 480.78 feet, arc distance 358.46 feet; (9) thence run along said right-of-way line 47°18'32" West, a distance of 99.11 feet; (10) thence run by a curve to the right along said right-of-way line, having a radius of 1,666.10 feet, arc distance 637.79 feet; thence along said right-of-way line North 25°55'00"

West, a distance of 1,375.70 feet; thence run by a curve to the left, along said right-of-way line, having a radius of 426.78 feet, arc distance 515.96 feet, to a point of reverse curvature; thence run by a curve to the right along said right-of-way line having a radius of 1,024.87 feet, arc distance of 846.52 feet; thence run South 66°00'00" West, 422.72 feet; thence run North 19°10'54" West, 825.00 feet; thence run North 32°33'24" West, 57.06 feet; thence run North 65°06'34" West, 103.51 feet to a point on the Southeasterly right-of-way line of Royal Palm Drive; thence run along said right-of-way line along a curve to the left, radius 597.10 feet, arc 265.97 feet, chord North 36°11'58" East, 263.78 feet; thence run North 00°03'56" West, along the center line of 64th Street South, said center line being North-South center line of the Northwest 1/4 of Section 29 Township 31 South, Range 16 East; to the North boundary of Section 29 Township 31 South, Range 16 East; the same being the center line of 7th Avenue South extended; thence run East on and along the North line of said Section 29 to the Northeast corner of said Section 29; thence continue to run East along the North line of Section 28, Township 31 South, Range 16 East, a distance of 30.00 feet to the East right-of-way line of 58th Street South extended; thence run North 00°28'00" East along said East right-of-way line a distance of 630.21 feet to the South right-of-way line of the Seaboard Coast Line Railroad; thence run North 89°53'00" East along said South right-of-way line a distance of 1,764.79 feet; thence run by a curve to the right, along said South right-of-way line, having a radius of 1,880.10 feet, arc distance 718.20 feet; chord bearing South 79°12'30" East, chord distance 711.57 feet; thence run South 68°18'00" East along said South right-of-way line a distance of 1,334.28 feet to a point of intersection with the North line of Section 28, Township 31 South, Range 16 East; thence run Easterly along said North section line a distance of 195 feet more or less, to the intersection of the said North section line and the center line of 49th Street South, said point being the Northeast corner of the Northwest 1/4 of the Northeast 1/4 of said Section 28; thence South along the North-South center line of the East 1/2 of said Section 28, and the East 1/2 of Section 33, Township 31 South, Range 16 East, the same being the center line of 49th Street South to the Northeast corner of the Southwest 1/4 of the Northeast 1/4 of said Section 33, the same being the intersection of the center line of 49th Street South and 26th Avenue South; thence run East along the East-West center line of the Northeast 1/4 of said Section 33 and the East-West center line of the Northwest 1/4 of Section 34, Township 31 South, Range 16 East, the same being the center line of 26th Avenue South, to the intersection of said East-West center line with North-South center line of said Section 34, the same being the intersection of the center lines of 40th Street South and 26th Avenue South; thence run South along said North-South center line of said Section 34 to the center of said Section 34 and the Point of Beginning.

A parcel of land being a portion of Pasadena Golf Club Subn as recoded in plat book 20 page 65 and a portion of Pasadena Golf Club Estates Section One as recorded in plat book 36, page 11, both being of the public records of Pinellas County, Florida, being more particularly described as follows:

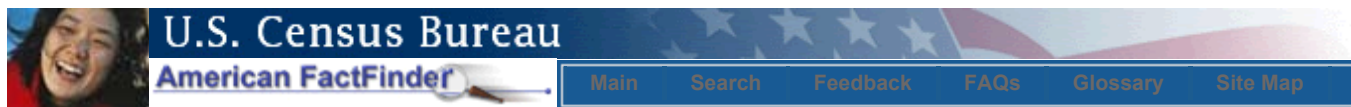
Begin at the Southwest corner of that certain property as described in official records book 8046, page 949 of the public records of Pinellas County, Florida; thence South 27°02'38" East, 1,166.85 feet to the West corner of that certain property as described in the Gulfport City Council Ordinance No. 2001-11 dated November 6, 2001, same being the point of intersection with a non-tangent curve concave Northwesterly and having a radius of 219.00 feet; thence along the Northwest boundary of said certain property the following three (3) courses; (1) thence Northeasterly along the arc of said curve 53.89 feet through a central angle of 14°05'53" a chord bearing and distance of North 51°05'18" East, 53.75 feet to a reverse curve concave Southeasterly and having a radius of 205.50 feet; (2) thence Northeasterly along the arc of said curve 46.83 feet through a central angle of 13°03'22" a chord bearing and distance of North 50°34'03" East, 46.73 feet to a reverse curve concave Northwesterly and having a radius of 182.50 feet; (3) thence Northeasterly along the arc of said curve 7.82 feet through a central angle of 02°27'19" a chord bearing and distance of North 55°52'04" East, 7.82 feet to the North corner of said certain property; thence South 27°02'38" East, 196.57 feet to the East corner of said certain property; thence South 62°57'22" West, 106.00 feet to the South corner of said certain

property; thence South 27°02'38" East, 241.15 feet; thence South 29°54'17" East, 1,515.13 feet; thence along the Easterly boundary line of Pasadena Golf Club Estates Section One, recorded in Plat Book 36, Page 11, Pinellas County, Florida, for the following ten (10) courses: (1) thence North 26°45'44" East, along the Northwesterly right-of-way line of 59th Street South, the same being a continuation of Bau Hinia Drive, 101.07 feet; (2) thence run by a curve to the left, having a radius of 600.00 feet, arc distance 471.93; (3) thence North 18°18'16" West, a distance of 202.92 feet; (4) thence run by a curve to the right along said right-of-way line having a radius of 530.00 feet, arc distance 357.09 feet; (5) thence along a curve to the right having a radius of 280.00 feet and an arc distance of 69.99 feet; (6) thence along a curve to the left, having a radius of 25.00 feet, an arc distance of 54.39 feet to the intersection of the Westerly right-of-way line of 59th Street South and the Southerly right-of-way line of Gulfport Boulevard; (7) thence South 89°58'28" West, a distance of 12.06 feet; (8) thence run by a curve to the right along the Southwesterly right-of-way line of Gulfport Boulevard, having a radius of 480.78 feet, arc distance 358.46 feet; (9) thence run along said right-of-way line 47°18'32" West, a distance of 99.11 feet; (10) thence run by a curve to the right along said right-of-way line, having a radius of 1,666.10 feet, arc distance 637.79 feet; thence along said right-of-way line North 25°55'00" West, a distance of 515.49 feet to the Southeast corner of that certain property as described in official records book 11376, page 254 of the public records of Pinellas County, Florida; thence leaving said right-of-way line, South 64°39'26" West, along the Southerly boundary of said certain property, a distance of 121.16 feet to the Southwest corner of said certain property; thence North 28°24'23" West, along the westerly boundary of said certain property, a distance of 163.58 feet; thence North 41°38'47" West, continuing along said westerly boundary, a distance of 337.54 feet to the Northwest corner of said certain property; thence South 61°02'12" West, along the South boundary of aforesaid certain property as described in official records book 8046, page 949, 73.02 feet to the Point of Beginning.

Subject area contains 20.81 acres, more or less

(Ord. No. 79-7, § 2, 8-16-79; Ord. No. 82-6, § 2, 10-5-82; Ord. No. 82-7, § 2, 10-5-82; Ord. No. 89-11, § 3, 8-15-89; Ord. No. 97-12, § 1, 5-6-97; Ord. No. 2001-11, § 2, 11-6-01; Ord. No. 2001-16, § 2, 12-4-01; Ord. No. 2002-19, § 2, 12-3-02)

GRAPHIC LINK: [Corporate Limits](#)



[P27. PLACE OF WORK FOR WORKERS 16 YEARS AND OVER--PLACE LEVEL \[5\] - Universe: Workers 16 years and over](#)

Data Set: [Census 2000 Summary File 3 \(SF 3\) - Sample Data](#)

NOTE: Data based on a sample except in P3, P4, H3, and H4. For information on confidentiality protection, sampling error, nonsampling error and count corrections see <http://factfinder.census.gov/home/en/datanotes/expsf3.htm>.

	Gulfport city, Florida
Total:	5,103
Living in a place:	5,103
Worked in place of residence	592
Worked outside place of residence	4,511
Not living in a place	0

U.S. Census Bureau
Census 2000

Standard Error/Variance documentation for this dataset:

[Accuracy of the Data: Census 2000 Summary File 3 \(SF 3\) - Sample Data \(PDF 141.5KB\)](#)