

## 60 dBu Contours - W233ARNew and WVBA.C

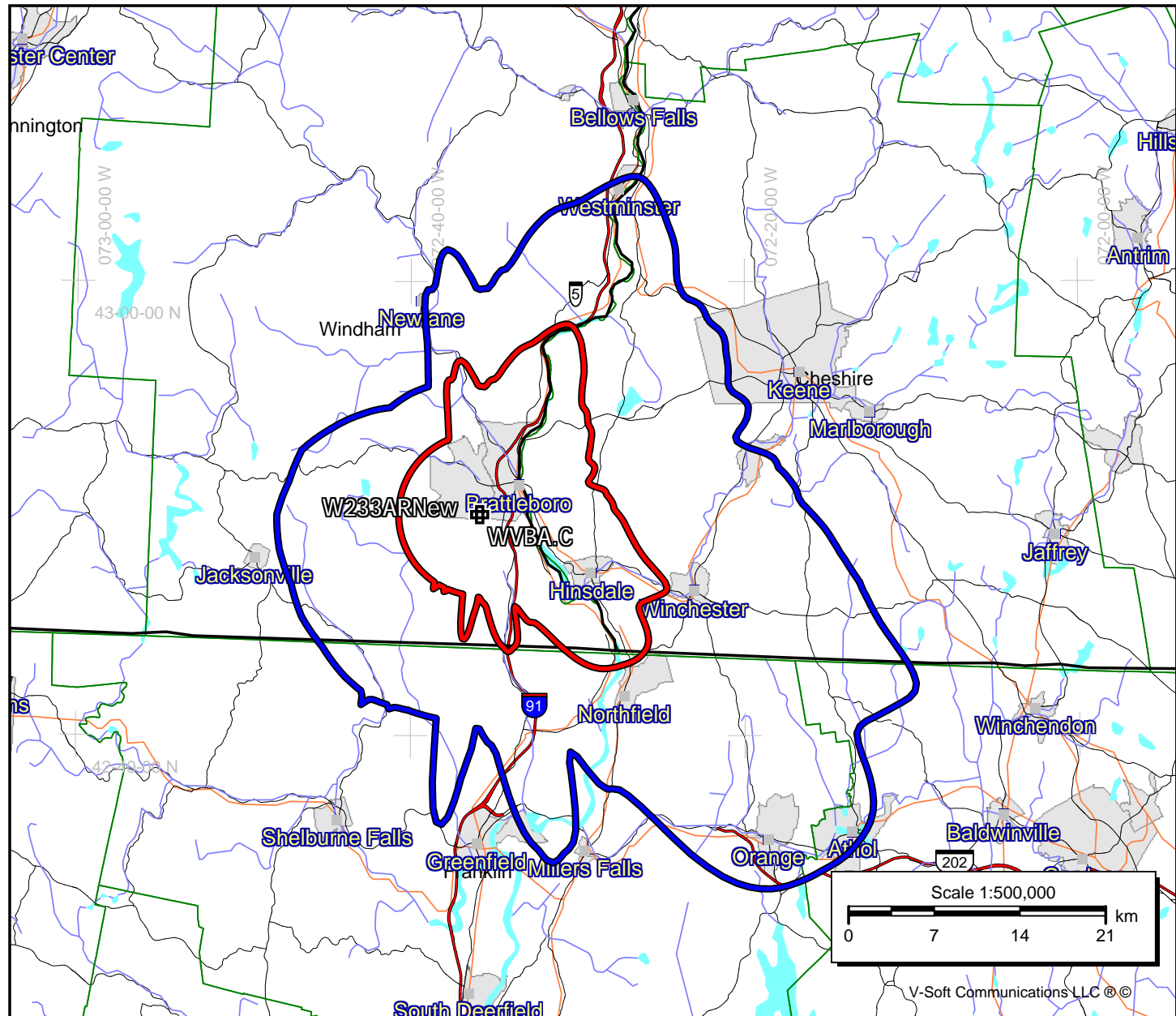
### W233ARNew

Latitude: 42-49-44 N  
Longitude: 072-35-52 W  
ERP: 0.19 kW  
Channel: 232  
AMSL Height: 307.0 m  
HAAT: 31.3 m  
Horiz. Pattern: Omni

### WVBA.C

Latitude: 42-49-44 N  
Longitude: 072-35-52 W  
ERP: 8.90 kW  
Channel: 205  
AMSL Height: 305.0 m  
HAAT: 32.1 m  
Horiz. Pattern: Directional

6/29/2012



N. Lat. = 424944.0 W. Lng. = 723552.0

HAAT and Distance to Contour,

FCC, FM 2-10 Mi, 51 pts Method - FCC 30 SEC

W233AR Move to 232 - Distance to 60 dBu Contour

Azi.	AV EL	HAAT	ERP kW	dBk	Field	60-F5
000	232.6	74.4	0.1900	-7.21	1.000	10.48
030	126.3	180.7	0.1900	-7.21	1.000	16.40
060	235.0	72.0	0.1900	-7.21	1.000	10.32
090	218.7	88.3	0.1900	-7.21	1.000	11.35
120	152.5	154.5	0.1900	-7.21	1.000	15.01
150	219.0	88.0	0.1900	-7.21	1.000	11.33
180	275.2	31.8	0.1900	-7.21	1.000	6.79
210	278.4	28.6	0.1900	-7.21	1.000	6.62
240	400.1	-93.1	0.1900	-7.21	1.000	6.62
270	460.7	-153.7	0.1900	-7.21	1.000	6.62
300	408.3	-101.3	0.1900	-7.21	1.000	6.62
330	301.3	5.7	0.1900	-7.21	1.000	6.62

Ave El= 275.66 M HAAT= 31.34 M AMSL= 307

N. Lat. = 424944.0 W. Lng. = 723552.0

HAAT and Distance to Contour,

FCC, FM 2-10 Mi, 51 pts Method - FCC 30 SEC

WVBA.C, Vermont Public Radio, BMPED20110922ACG

Azi. AV EL HAAT ERP kW dBk Field 60-F5

000	232.6	72.4	1.8669	2.71	0.458	18.39
010	198.6	106.4	2.2250	3.47	0.500	23.30
020	138.8	166.2	2.1719	3.37	0.494	28.14
030	126.3	178.7	2.2428	3.51	0.502	29.31
040	190.9	114.1	2.6338	4.21	0.544	25.00
050	215.5	89.5	3.9833	6.00	0.669	24.49
060	235.0	70.0	5.3870	7.31	0.778	23.40
070	241.8	63.2	6.2798	7.98	0.840	23.18
080	232.9	72.1	6.3398	8.02	0.844	24.60
090	218.7	86.3	6.8765	8.37	0.879	27.22
100	193.2	111.8	7.5986	8.81	0.924	31.48
110	132.3	172.7	6.9078	8.39	0.881	37.69
120	152.5	152.5	6.9550	8.42	0.884	35.57
130	101.4	203.6	7.3701	8.67	0.910	40.79
140	127.3	177.7	8.0322	9.05	0.950	39.41
150	219.0	86.0	8.9000	9.49	1.000	28.79
160	259.7	45.3	8.9000	9.49	1.000	21.50
170	225.4	79.6	8.9000	9.49	1.000	27.77
180	275.2	29.8	8.7229	9.41	0.990	17.47
190	254.1	50.9	7.8640	8.96	0.940	22.14
200	295.5	9.5	7.8640	8.96	0.940	16.99
210	278.4	26.6	8.6175	9.35	0.984	17.41
220	323.7	-18.7	8.2193	9.15	0.961	17.19
230	352.5	-47.5	7.5002	8.75	0.918	16.77
240	400.1	-95.1	7.4839	8.74	0.917	16.76
250	412.3	-107.3	6.9235	8.40	0.882	16.40
260	443.4	-138.4	7.2411	8.60	0.902	16.60
270	460.7	-155.7	7.1930	8.57	0.899	16.57
280	488.7	-183.7	6.0576	7.82	0.825	15.79
290	473.0	-168.0	5.5827	7.47	0.792	15.44
300	408.3	-103.3	3.8067	5.81	0.654	14.01
310	378.6	-73.6	2.5189	4.01	0.532	12.68
320	358.3	-53.3	1.6000	2.04	0.424	11.38
330	301.3	3.7	1.5925	2.02	0.423	11.37
340	267.6	37.4	1.5107	1.79	0.412	12.37
350	209.2	95.8	1.4598	1.64	0.405	20.01

Ave El= 272.86 M HAAT= 32.14 M AMSL= 305 M