

DELAWDER COMMUNICATIONS, INC.

P.O. Box 1095
Ashburn, Virginia 20146-1095
(703) 299-9222

ENGINEERING REPORT

Three Points, CA, Channel 251D FM Translator Application

ENGINEERING STATEMENT

Gold Coast Broadcasting, LLC ("Applicant") submits this technical minor amendment for its pending 1983 application for a new FM translator station at Three Points, CA. The pending application file number is BNPFT-20030317GLY.

This filing includes a ERP reduction to 10 watts. The change is minor pursuant to Section 74.1233(a) of the FCC Rules.

LPFM Preclusion Study Results for the herein proposed facility are provided in the separate Exhibit 1 (Section 1, Question 5 of the FCC Form 349, as directed by the FCC).

CHANNEL STUDY

Attached as Figure EE1 is a channel study for the proposed channel 251D facility. All required protections are met by contour non-overlap pursuant to Section 74.1204, with the exception of protection to KYSR, Los Angeles, CA, 254B. KYSR is protected, as discussed below.

CONTOUR OVERLAP SHOWING

The service and interference contour distances that are listed on Figure EE1 use the worst-case (greatest) distance along any bearing for each facility, and also considers each protected station as omni-directional. No contour overlap using this worst-case test means no possible contour overlap when applying Section 73.313 methodology.

Figures EE2, EE2 (Magnified) and EE3, attached, show non-overlap between the service contours of KLAX-FM and KDAR and the interference contours of the proposed channel 251D facility. All contours were determined pursuant to Section 73.313 of the FCC Rules using a USGS 3 arc-second terrain database at one-degree radial intervals.

PROTECTION TO KYSR

KYSR, Los Angeles, CA, 254B, is third adjacent-channel to the proposed channel 251D facility and is located only 64.9 kilometers (at 165 degrees True bearing) from the proposed 251D transmitter site. The 60 dBu F50,50 service contour extends beyond the 251D transmitter site. Using the well-established *Living Way Ministries* Methodology, no actual interference to any population is predicted to exist to KYSR.

Note that a rule waiver of Section 74.1204 for this second/third adjacent-channel protection using the well-established *Living Way Ministries* Methodology is respectfully requested if such a rule waiver is deemed necessary for protection to this station.

The F50,50 signal strength from KYSR at the proposed 251D transmitter site is 63.0 dBu (the “desired” signal). The second/third adjacent-channel protection of Section 74.1204 is an undesired-to-desired (“U/D”) dB signal strength ratio of 40:1. Therefore, predicted interference to KYSR from the proposed 206D facility is a signal of greater than or equal to 103.0 dBu.

The 103.0 dBu signal based on a free space field determination is predicted to extend out to 158 meters from the proposed 251D transmitter site. As shown by the attached aerial photograph of the proposed site (Figure EE4) is a mountaintop communications site; and *there is no population located within the 103.0 dBu interfering contour distance of 158 meters*. Therefore, pursuant to Section 74.1204(d) of the FCC Rules, KYSR is adequately protected by the proposed facility.

SECTION 74.1204 CHANNEL STUDY**PROJECT: THREE POINTS,CA, 251D FROM PROPOSED SITE****STUDY COORDINATES: N 34-41-00.0; W 118-34-31.0(N D-M-S; W D-M-S)**

Call Docket	Channel FacilityID	Class Service	Frequency ERP	Status DA?	City HAAT	State RCAMSL	Country RCAGL	File Number
Latitude	Longitude			ASRN	Dist(km)	Dist(mi)	Azimuth	
Licensee/Permittee								
KLAX-FM 19971231KC	250 B	FM	97.9 MHz	LIC	EAST LOS ANGELES	CA	US	BLH-
	-		61638		33. kW	DA	184. m	596. m
N 34 9	49.00	W 118 11	44.00	-	67.40 km	41.88 mi	148.82°	KLAX
LICENSING, INC.								

Protected Contour Dist: 87.2 km Prop 251D Interf Contour Dist: 41.6 km
Result: -61.4 km SHORT (WORST-CAST STUDY); See Contour Non-overlap Showing

NEW 20030317GLY	251 D	FX	98.1 MHz	APP	THREE POINTS	CA	US	BNPFT-
	-		156197		0.25 kW		721.3 m	1756. m
N 34 41	0.00	W 118 34	31.00	-	0.00 km	0.00 mi	0.00°	GOLD
COAST BROADCASTING LLC								

NOTE: THIS IS THE AUCTION 83 APPLICATION THAT IS BEING AMENDED BY THIS APPLICATION

KDAR 19970528KA	252 B1	FM	98.3 MHz	LIC	OXNARD	CA	US	BLH-
	-		3077		1.5 kW		393. m	677. m
N 34 20	55.00	W 119 19	57.00	1015915	78.82 km	48.98 mi	242.00°	NEW
INSPIRATION BROADCASTING COMPANY, INC.								

Protected Contour Dist: 57.7 km Prop 251D Interf Contour Dist: 34.7 km
Result: -13.6 km SHORT (WORST-CAST STUDY); See Contour Non-overlap Showing

KFXM-LP 20130327ADA	252 L1	FL	98.3 MHz	CP	LANCASTER	CA	US	BPL-
	-		124198		0.1 kW		23. m	757. m
N 34 49	39.00	W 118 10	13.00	1234356	40.38 km	25.09 mi	66.46°	THE
ORGANIZATION FOR THE PRESERVATION & CULTIVATION OF RADIO								

Protected Contour Dist: 7.8 km Prop 251D Interf Contour Dist: 28.5 km
Result: 4.1 km CLEAR (WORST-CAST STUDY)

KYSR 20090709ACO	254 B	FM	98.7 MHz	LIC	LOS ANGELES	CA	US	BMLH-
	-		36019		75. kW		360. m	559. m
N 34 7	8.00	W 118 23	30.00	1013828	64.85 km	40.29 mi	164.92°	AMFM
BROADCASTING LICENSES, LLC								

NOTE: A SHOWING BASED ON THE LIVING WAY MINISTRIES METHODOLOGY TO THIS STATION IS INCLUDED WITH THIS APPLICATION THAT DEMONSTRATES PROTECTION TO THIS FACILITY.

Study Complete

FIGURE EE2

Three Points, CA 251D Contour Non-Overlap Showing to KLAX-FM

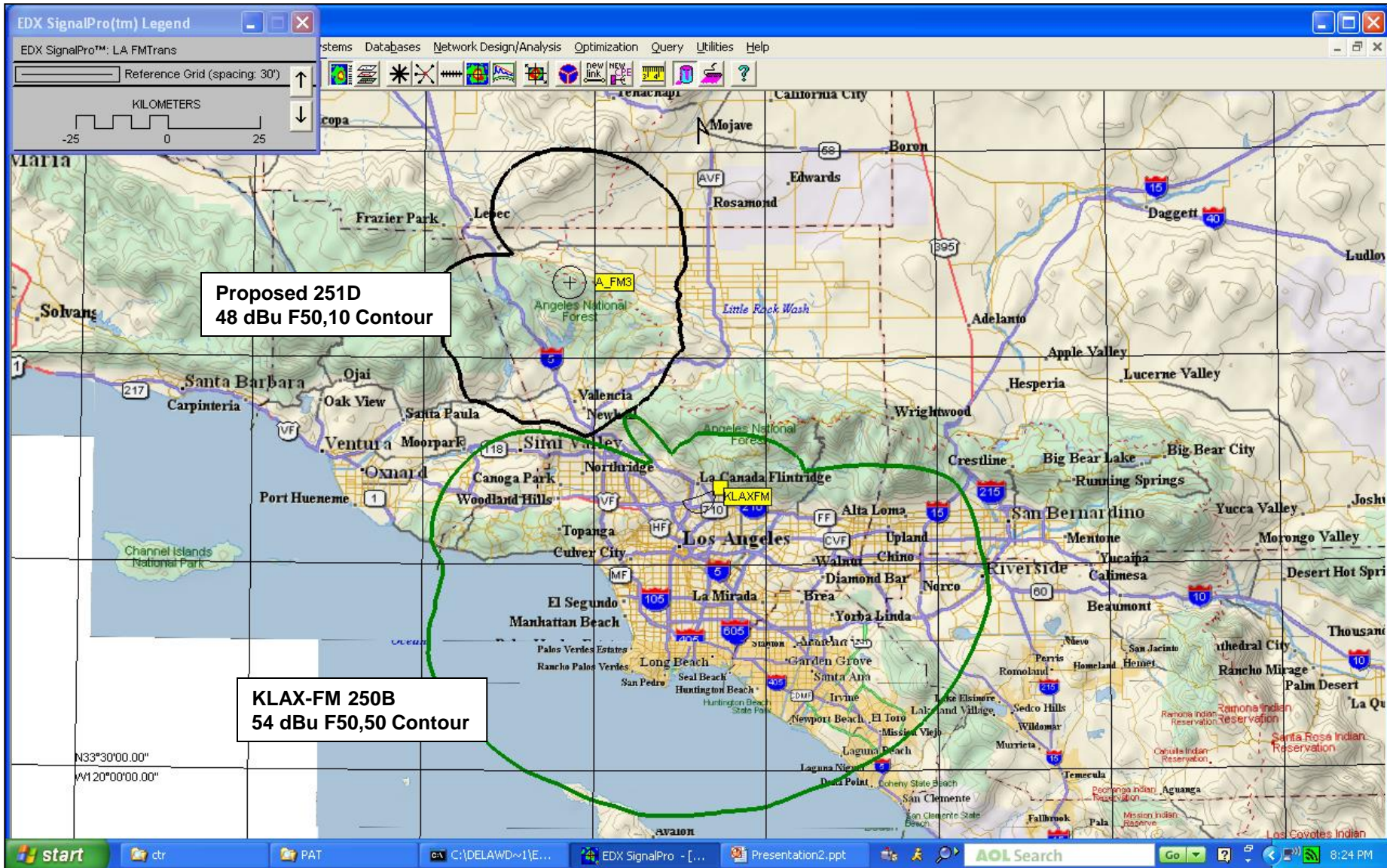


FIGURE EE2 (Magnified)
Three Points, CA 251D Contour Non-Overlap Showing to KLAX-FM

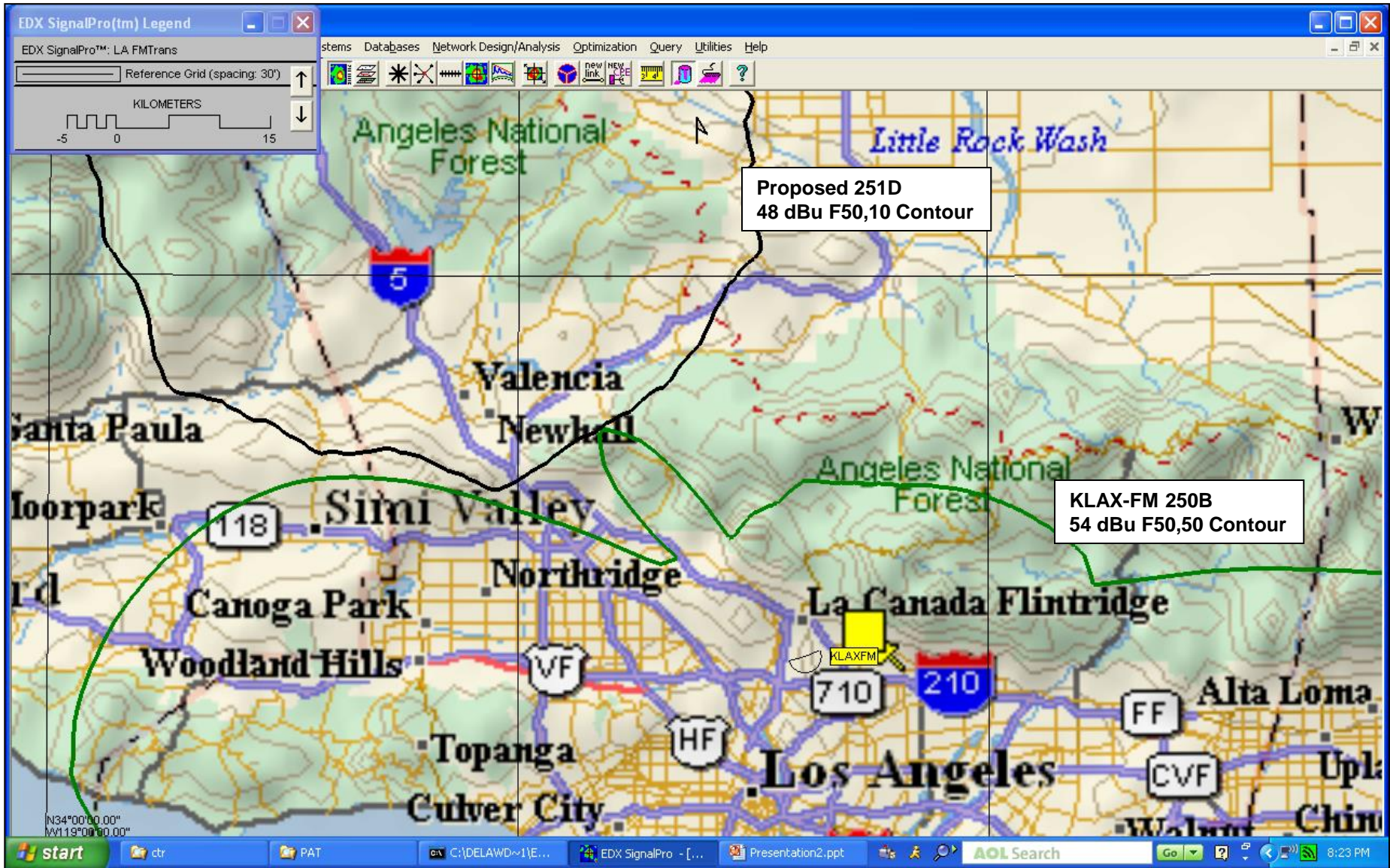


FIGURE EE3

Three Points, CA 251D Contour Non-Overlap Showing to KDAR

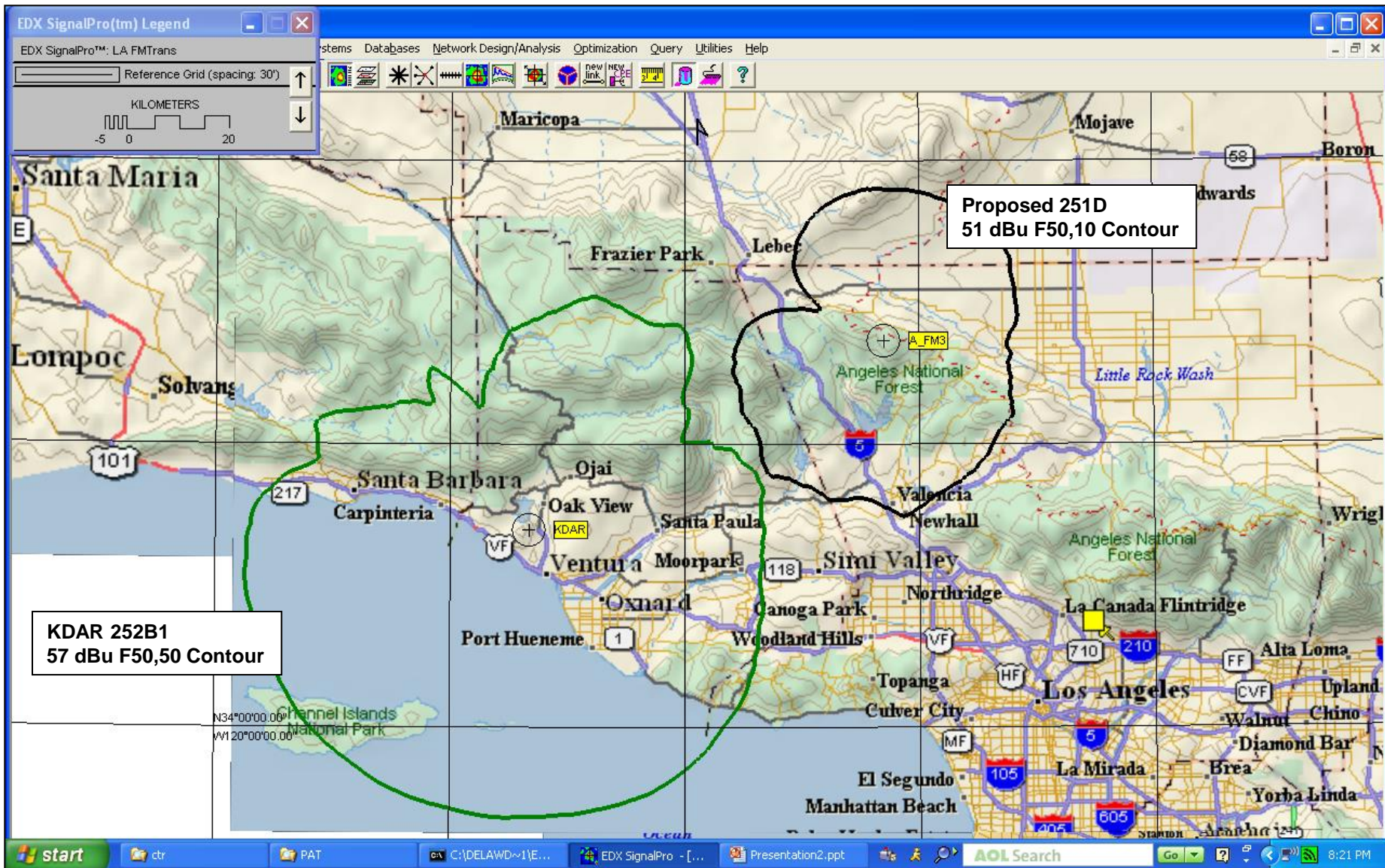
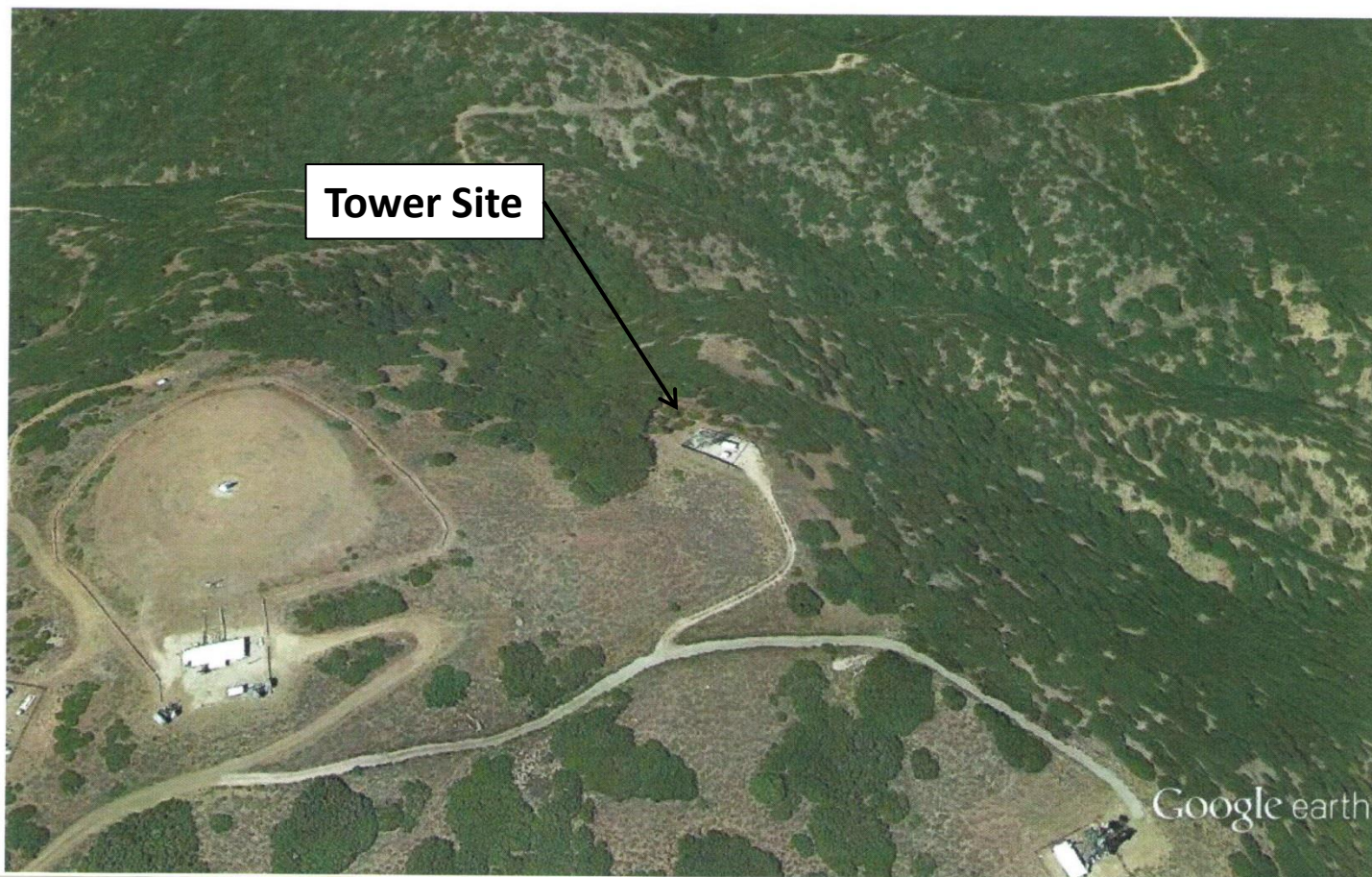


FIGURE EE4



feet 2000
meters 900

