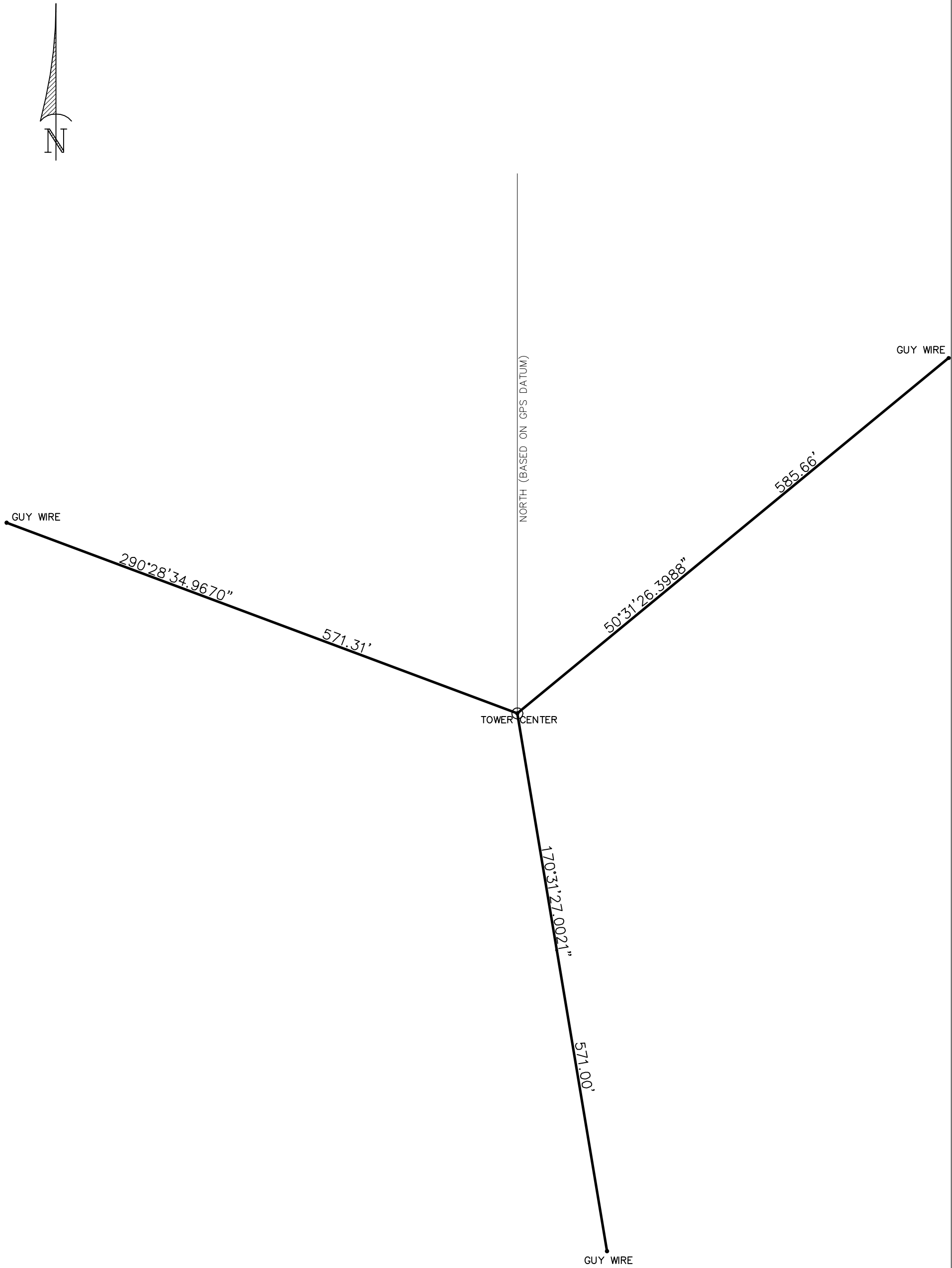


Exhibit #10-2 - Surveyor Map and Certification



DRIVE: <i>D02</i>		FIELD BK: N/A	SEAL:	MOBILE COUNTY 5588 JACKSON RD. MOBILE, AL 36619 PHONE: (251) 666-2010 FAX: (251) 666-1792 InterNet: www.Polysurveying.Com			BALDWIN COUNTY 28810 HWY 98, SUITE F DAPHNE, AL 36526 PHONE: (251) 626-0905 FAX: (251) 626-7581 E-Mail: MAIL@Polysurveying.Com		SCALE 1" = 100'	
DXF: 1710-177					DATE: 10-31-2017		DRAWN BY: T.D.F.			
FILE NAME: 1710-177					DATE SURVEYED: 10-31-2017		CHECKED BY: J.B.O.			

NOTE: ONLY ORIGINAL EMBOSSED DRAWINGS ARE TO SCALE



August 16, 2018

GoForth Media
c/o Wilbur Golbert
6530 Spanish Fort Blvd
Suite B
Spanish Fort, AL 36526

Re: 31400 One horse Road

I, S. Matthew Orrell, herby certify that the azimuth of tower face for antenna orientation is 110° 28'30"
for tower at 31400 One Horse Road in Spanish Fort.

A handwritten signature in black ink, appearing to read "S. Matthew Orrell", is written over a horizontal line.

S. Matthew Orrell P.L.S.



Mobile County Office
5588 Jackson Road
Mobile, AL 36619
P: (251) 666-2010
F: (251) 666-1792

Baldwin County Office
28810 U.S. 98
Daphne, AL 36526
P: (251) 626-0905
F: (251) 626-7581