

EXHIBIT 12

Western Inspirational Broadcasters, Inc.

January, 2006

Application to make changes in

FM Translator

K203BJ

Chester, CA

Waiver Request of Section 74.1204, **And** **Showing of Compliance**

The proposed FM translator is located within the protected 60 dBu F(50,50) contour of second adjacent channel stations KTOR, Channel 259, facility ID #82891, and KWLJ, Channel 255, facility ID #54981 (see figure 1).

KTOR, Westwood, CA

The predicted F(50,50) field strength of KTOR at the proposed translator site is 121 dBu (free space equation). Using the Undesired-to-Desired method for calculating proposed interference, the proposed interfering contour with respect to KTOR is 161 dBu ($121 + 40$) (free space equation). The 161 dBu F(50,10) interfering contour would, in the worst case at the maximum radial, extend less than one meter from the transmitting antenna. Since the proposed transmitting antenna is located 4.6 meters above ground level, the area of interference would not reach the ground.

KWLJ, Chester, CA

The predicted F(50,50) field strength of KWLJ at the proposed translator site is 116 dBu (free space equation). Using the Undesired-to-Desired method for calculating proposed interference, the proposed interfering contour with respect to KWLJ is 156 dBu ($116 + 40$) (free space equation). The 156 dBu F(50,10) interfering contour would, in the worst case at the maximum radial, extend one meter from the transmitting antenna. Since the proposed transmitting antenna is located 4.6 meters above ground level, the area of interference would not reach the ground.

To further support this waiver request, an interference area represented by a 0.5 km circle around the proposed translator site has been plotted on a section of the 7.5 min Canyon Dam Topographical Map (see figure 2). As is evident from the map, this is a remote site located within a National forest, and no population inhabits the interference area.

Exhibit 12, Page 2

Since no population inhabits the interference area, Western Inspirational Broadcasters, Inc. respectfully requests a waiver of the FM translator contour overlap regulations with respect to second-adjacent channel stations KTOR and KWLJ.

Western Inspirational Broadcasters, Inc.
Carson City, NV

K203BJ @ 257

REFERENCE		CH# 257D - 99.3 MHz, Pwr= 0.057 kW, HAAT=756.0M, COR= 2284 M								DISPLAY DATES	
40 14 22 N		Average Protected F(50-50)= 25.2 km								DATA	01-31-06
121 01 54 W		Ave. F(50-10) 40 dBu= 79.6 54 dBu= 39.3 80 dBu= 4.8 100 dBu= .5								SEARCH	01-31-06
CH	CALL	TYPE	AZI.	DIST	LAT.	Pwr(kW)	COR(M)	PRO(km)	*IN*	*OUT*	
CITY		STATE	<--	FILE #	LNG.	HAAT(M)	INT(km)	LICENSEE	(Overlap	in km)	
255C0	KWLJ	LIC NCX	123.8	1.22	40 14 00	12	2274	17.7	-23.25	-75.54*	
Chester		CA	303.8	BLED20051229ABF	121 01 11	791	6.7	Educational Media Foundati			
259A	KTOR	LIC CX	123.2	0.06	40 14 21	0.09	2291	16.9	-17.47	-30.28*	
Westwood		CA	303.2	BLH20030515AAX	121 01 52	851	0.7	Sierra Radio, Inc.			
257D	K257EK	CP C	55.3	40.04	40 26 36	0.012	1407	4.5	24.90	12.92	
Susanville		CA	235.3	BMPFT20051212ADD	120 38 35	-76	10.6	John Regh			
257B1	KLVS<	LIC CX	173.8	107.61	39 16 33	13	1160	15.4	-8.20	2.23	
Grass Valley		CA	353.8	BMLD20051011AOQ	120 53 49	104	100.4	Educational Media Foundati			
257B1	KLVS.C	CP NCX	177.0	110.46	39 14 45	1	1187	14.4	10.63	11.42	
Grass Valley		CA	357.0	BPED20010321ACN	120 57 56	295	85.4	Educational Media Foundati			
257C2	KNNN<	LIC NC	290.6	134.40	40 39 15	1.6	996	24.4	-19.32	1.47	
Shasta Lake City		CA	110.6	BLH20010605AAC	122 31 12	756	129.4	Regent Licensee Of Redding			
257D	K257CW	LIC DHN	128.0	118.92	39 34 38	0.016	2434	19.9	41.96	35.07	
Verdi		NV	308.0	BLFT19861014TO	119 56 19	627	57.0	Americom Las Vegas Limited			
255D	KWLJF1	LIC C	135.7	72.92	39 46 09	0.015	2218	21.4	51.26	58.58	
Portola		CA	315.7	BLFTB20020326ABS	120 26 08	496	0.3	Educational Media Foundati			

ERP and HAAT are on direct line to and from reference station.

"*"Affixed to 'IN' or 'Out' values = site inside protected contour.

< = Station meets FCC minimum distance spacing for its class.

Figure 1

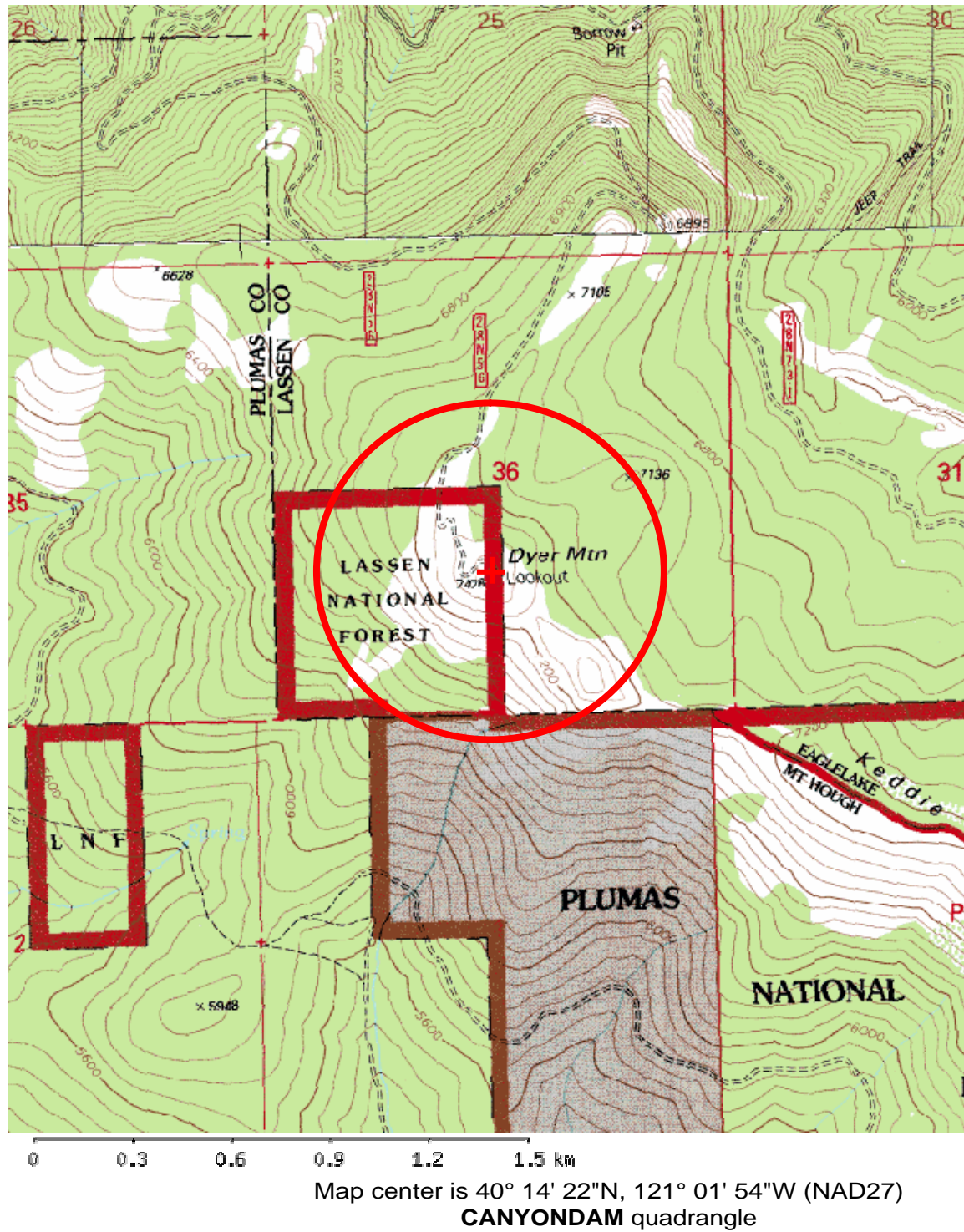


Figure 2

**Waiver Request of Section 74.1235(b)(2),
Seeking “grandfathering” of current power**

With this application, Western Inspirational Broadcasters, Inc. (WIBI) is seeking a waiver of the power limitations as set forth in CFR 74.1235(b)(2), and continued “grandfathering” to retain the currently authorized ERP.

In support of this request, WIBI submits the following:

1. There will be no change in the location, or center of radiation of the proposed translator.
2. Translator K203BJ’s “displacement” by KJCQ necessitates a frequency change.
3. A reduction in power to 10 watts ERP from its current transmitter site, as required by 74.1235(b)(2) would result in a significant reduction of the 1 mV/m service contour such that it would fall short of the city of license by a significant distance.
4. A reduction in power of the magnitude required under 74.1235(b)(2) would jeopardize the operation of FM translator K213BF, Quincy, CA, which receives its input over-the-air from K203BJ. In all likelihood, a reduction in power at K203BJ is likely to introduce significant noise in, or eliminate operation of, this downline translator.
5. An alternative site closer to the city of license is not available without sacrificing the elevation advantage which currently assures reliable, consistent reception of the over-the-air signal from the primary station.
6. A “white area waiver” request is not possible due to the proximity of other NCE signals in Immediate area.

The antenna pattern of the proposed translator has been modified so as to give contour protection to licensed co-channel signals in the area, i.e. K257EK, Susanville, CA; KLVS, Grass Valley, CA; and KNNN, Shasta Lake City, CA. This modified pattern will, however, continue to provide coverage over the service area quite similar to that currently provided (see figure 3).

For the above cited reasons, WIBI respectfully requests a waiver of the FM translator power limitations and continued “grandfathering” of the currently licensed ERP for FM Translator K203BJ.

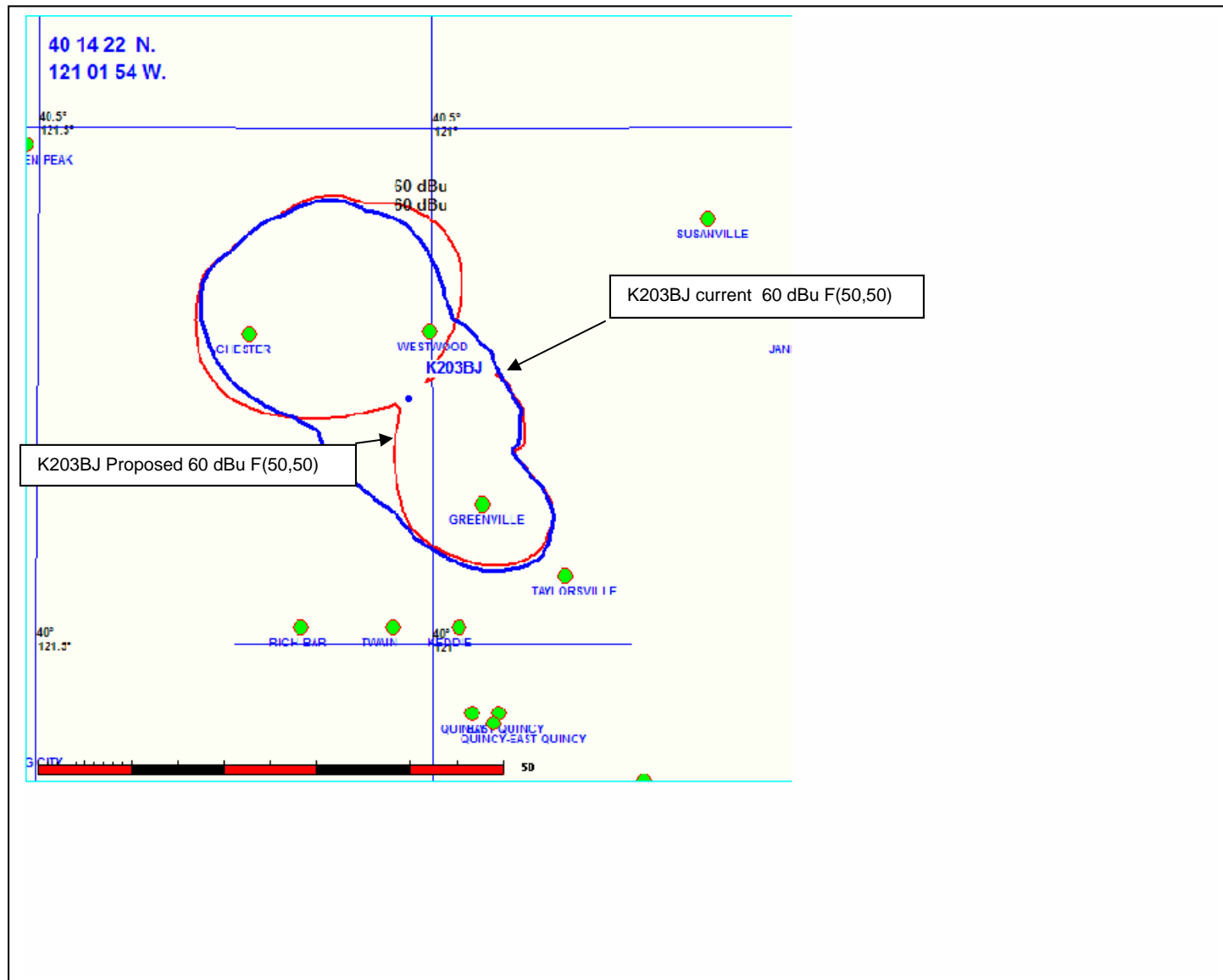


Figure 3

This document was created with Win2PDF available at <http://www.daneprairie.com>.
The unregistered version of Win2PDF is for evaluation or non-commercial use only.