

Channel Study

REFERENCE		CH# 211B - 90.1 MHz, Pwr= 50 kW, HAAT= 90.0 M, COR= 509 M						DISPLAY DATES		
39 21 16.0 N.		Average Protected F(50-50)= 42.9 km						DATA 01-24-08		
80 01 27.0 W.								SEARCH 01-24-08		
CH CITY	CALL	TYPE ANT STATE	AZI. <--	DIST FILE #	LAT. LNG.	Pwr(kW) HAAT(M)	INT(km) COR(M)	PRO(km) LICENSEE	*IN* (Overlap in km)	*OUT*
211C2 WZWA Clarksburg		APP DCX WV	0.0 0.0	0.00 BPED20070907AEI	39 21 16.0 80 01 27.0	50.000 90	119.8 509	37.4 Maranatha Broadcasting, In	-157.23*	-157.23*
211B1 WZWA Clarksburg		LIC CN WV	263.0 82.8	31.95 BLED19920709KA	39 19 09.0 80 23 31.0	1.500 182	78.2 536	26.7 Maranatha Broadcasting, In	-94.13*	-128.32
06 1C WDTV-D Weston		CP DHY WV	228.1 47.8	46.47 BPCDT19991029AFO	39 04 29.0 80 25 28.0	10.000 248	630	56.8 Withers Broadcasting Compa	94.0R	-47.6M
06 1 WDTV-D Weston		GRR DHN WV	228.1 47.8	46.47 BPRM20001002ADW	39 04 29.0 80 25 28.0	10.000 253	634	52.5 Withers Broadcasting Compa	89.7R	-43.2M
06 C WDTV-D Weston		ST N WV	228.1 47.8	46.47 BDSTA20050614ADO	39 04 29.0 80 25 28.0	0.100 193	576	29.4 Withers Broadcasting Compa	66.6R	-20.2M
210B WVNP Wheeling		LIC CY WV	334.7 154.3	106.06 BLED19811102AL	40 12 58.0 80 33 31.0	25.000 152	65.8 484	43.7 West Virginia Educational	3.66	5.56
212B WAIJ Grantsville		LIC DEN MD	63.8 244.4	89.05 BLED19841001DW	39 42 14.0 79 05 31.0	10.000 171	57.6 922	38.9 He's Alive, Incorporated	4.12	6.92
209A AP5051 Morgantown		APP DCX WV	8.8 188.9	34.59 BNPED20071022BOQ	39 39 44.0 79 57 43.0	0.100 65	0.6 429	9.6 Light Of Life Community, I	5.29	22.11
265A WZST Westover		LIC CN WV	20.2 200.3	22.63 BLH19830117AQ	39 32 44.0 79 55 58.0	3.000 81	0.0 533	0.0 Tschudy Broadcasting Corp.	14.5R	8.1M
212A WCDE Elkins		LIC CN WV	162.0 342.1	49.43 BLED19841214LP	38 55 52.0 79 50 49.0	0.100 -105	8.0 631	5.6 Board Of Trustees, Davis &	19.28	10.33
209B AP7685 West Union		APP DCX WV	264.6 84.1	64.38 BNPED20071015ACF	39 17 51.0 80 46 02.0	4.700 120	2.3 427	24.2 Araiza Revival Ministries,	13.80	34.80
211A WOUZ-FM Zanesville		LIC VN OH	287.8 106.5	173.62 BLED19931006KG	39 48 50.0 81 57 21.0	3.000 85	73.7 354	22.8 Ohio University	50.17	16.90
208B WAUA Petersburg		LIC CX WV	104.5 285.0	66.80 BLED20040510ABJ	39 12 07.0 79 16 31.0	10.000 322	4.6 1173	46.0 West Virginia Educational	33.65	17.96
211A WIUP-FM Indiana		LIC HN PA	27.4 207.9	158.27 BLED19800304AF	40 36 57.0 79 09 40.0	1.600 27	55.2 425	15.1 Indiana University Of Penn	76.58	28.18
211A AP0322 Capon Bridge		APP DCX WV	97.2 278.2	142.33 BNPED20071016AAU	39 10 58.0 78 23 23.0	0.070 417	60.7 792	18.7 Positive Alternative Radio	52.39	29.88
212B1 WVPB Parkersburg		LIC HN WV	263.8 82.8	136.17 BLED19850703KC	39 12 44.0 81 35 30.0	9.000 98	48.8 331	31.5 West Virginia Educational	39.28	31.27
211A AP2032 Gore		APP ZVX VA	97.2 278.2	142.33 BNPED20071018DFN	39 10 58.0 78 23 23.0	0.035 463	53.6 806	15.9 Pensacola Christian Colleg	59.53	32.70
211B1 AP3536 Everett		APP DVX PA	62.1 243.2	156.67 BNPED20071019AYZ	40 00 04.0 78 24 04.0	1.900 295	77.2 695	26.7 Duquesne University	52.46	35.75
211A AP2338 Everett		APP DVX PA	62.1 243.2	156.67 BNPED20071018BCQ	40 00 04.0 78 24 04.0	0.080 309	51.9 710	15.9 Invisible Allies Ministrie	77.69	46.60
06Z1C WJACTV Johnstown		LI HN PA	37.8 218.5	143.84 BLCT19880502KE	40 22 17.0 78 58 58.0	70.800 341	868	77.6 Wpxi, Inc.	94.6R	49.3M
211A WVMN New Castle		LIC CN PA	353.0 172.8	185.59 BLED19951130KA	41 00 47.0 80 17 36.0	2.000 72	60.2 414	16.9 The Moody Bible Institute	86.01	50.55
214A AP6148 Moundsville		APP DVX WV	320.6 140.2	92.30 BNPED20071012AAC	39 59 39.0 80 42 40.0	0.225 105	0.3 424	5.0 Kol Ami Havurah	50.69	82.94

<Page Break>

Maranatha Broadcasting
P.O. Box 7575
Huntington, WV 25777

Exhibit 16
Clarksburg, WV

Page # 2													
CH	CALL	TYPE ANT	AZI.	DIST	LAT.	Pwr (kW)	INT(km)	PRO(km)	*IN*	*OUT*			
CITY		STATE	<--	FILE #	LNG.	HAAT (M)	COR (M)	LICENSEE	(Overlap in km)				
211B1	WPVA	LIC C	145.8	178.51	38 01 16.0	2.500	99.4	38.8	53.46	52.28			
Waynesboro		VA	326.5	BLD19990723KA	78 52 38.0	293	723	Positive Alternative Radio					
211A	AP4184	APP DVX	322.4	184.28	40 39 35.0	2.000	34.4	10.2	109.90	61.86			
Bolivar		OH	141.5	BNPED20071019AAK	81 21 26.0	54	374	Denny And Marge Hazen Mini					
211A	KVLP	APP DCX	322.4	184.28	40 39 35.0	4.800	33.0	9.9	111.35	62.21			
Brewster		OH	141.5	BMAPED20071019AO	81 21 26.0	54	374	Educational Media Foundati					
214B1	AP4778	APP DVX	316.2	112.68	40 04 56.0	6.300	1.7	20.2	66.61	87.73			
Martin's Ferry		OH	135.6	BNPED20071022BDY	80 56 24.0	113	453	St. Paul Center For Biblic					

Terrain database is NGDC 30 SEC Distance + R = FCC Required Spacings in KM, Distance + M = Margin in KM
ERP and HAAT on direct-line with reference station.
Ant Column: (D= DA Standard, Z= DA 73.215, N= Not DA 73.215, _= Omni), Polarization (C,H,V,E),Beamtilt(Y,N,X)
***affixed to 'IN' or 'OUT' values = site inside protected contour.



Maranatha Broadcasting
P.O. Box 7575
Huntington, WV 25777

Exhibit 16-A1
Clarksburg, WV

WZWA vs. WVNP

01-24-2008 NGDC 30 SEC Terrain Data FMOver Analysis

WZWA. A
Channel = 211B
Max ERP = 50 kW
RCAMSL = 509 M
N. Lat. 39 21 16.0
W. Lng. 80 01 27.0
Protected
60 dBu

WVNP BLED19811102AL
Channel = 210B
Max ERP = 25 kW
RCAMSL = 484 M
N. Lat. 40 12 58.0
W. Lng. 80 33 31.0
Interfering
54 dBu

Azi muth (degrees)	ERP (kW)	HAAT (m)	Di st (km)	Azi muth (degrees)	ERP (kW)	HAAT (m)	Di st (km)	Actual (dBu)
308.0	029.2460	0173.8	050.2	174.6	025.0000	0111.4	065.0	53.08
309.0	028.4560	0171.2	049.7	173.8	025.0000	0111.5	064.8	53.17
310.0	027.6768	0168.2	049.1	172.8	025.0000	0113.6	064.6	53.35
311.0	027.0260	0165.3	048.6	172.0	025.0000	0114.8	064.4	53.48
312.0	026.3828	0162.1	048.0	171.0	025.0000	0115.7	064.3	53.55
313.0	025.7475	0157.9	047.3	170.1	025.0000	0116.5	064.4	53.57
314.0	025.1199	0152.4	046.4	169.0	025.0000	0118.6	064.7	53.61
315.0	024.5000	0146.6	045.4	167.9	025.0000	0120.8	065.0	53.61
316.0	023.8879	0141.9	044.5	166.9	025.0000	0122.5	065.3	53.60
317.0	023.2835	0139.0	043.9	166.1	025.0000	0123.7	065.5	53.62
318.0	022.6868	0136.9	043.4	165.3	025.0000	0125.4	065.5	53.69
319.0	022.0980	0133.5	042.8	164.4	025.0000	0128.3	065.8	53.76
320.0	021.5168	0128.3	041.9	163.5	025.0000	0131.1	066.3	53.75
321.0	021.3335	0122.4	041.0	162.7	025.0000	0132.3	066.8	53.66
322.0	021.1510	0116.9	040.3	161.9	025.0000	0131.9	067.3	53.48
323.0	020.9693	0112.3	039.6	161.1	025.0000	0130.8	067.7	53.29
324.0	020.7884	0109.2	039.0	160.5	025.0000	0129.9	068.0	53.15
325.0	020.6082	0107.5	038.7	159.8	025.0000	0129.9	068.1	53.11
326.0	020.4288	0105.6	038.4	159.2	025.0000	0130.7	068.3	53.10
327.0	020.2503	0102.7	037.8	158.6	025.0000	0132.1	068.7	53.05
328.0	020.0724	0099.4	037.2	157.9	025.0000	0133.6	069.2	52.98
329.0	019.8954	0098.1	037.0	157.4	025.0000	0134.6	069.3	52.98
330.0	019.7192	0098.9	037.0	156.8	025.0000	0135.2	069.2	53.05
331.0	019.9712	0099.2	037.2	156.3	025.0000	0135.4	069.0	53.13
332.0	020.2248	0097.4	037.0	155.8	025.0000	0135.2	069.1	53.07
333.0	020.4800	0094.5	036.6	155.2	025.0000	0134.6	069.5	52.93
334.0	020.7368	0093.3	036.4	154.7	025.0000	0133.6	069.6	52.84
335.0	020.9952	0094.3	036.7	154.2	025.0000	0132.1	069.3	52.85
336.0	021.2552	0095.8	037.1	153.6	025.0000	0130.4	069.0	52.87
337.0	021.5168	0096.9	037.4	153.1	025.0000	0128.6	068.7	52.86
338.0	021.7800	0098.3	037.7	152.5	025.0000	0126.8	068.4	52.85
339.0	022.0448	0100.4	038.1	151.9	025.0000	0125.4	068.1	52.89
340.0	022.3112	0102.8	038.6	151.3	025.0000	0124.4	067.7	52.96
341.0	022.9842	0104.5	039.1	150.7	025.0000	0123.7	067.3	53.05
342.0	023.6672	0106.2	039.6	150.0	025.0000	0123.2	066.9	53.13
343.0	024.3602	0108.0	040.1	149.3	025.0000	0122.9	066.6	53.23
344.0	025.0632	0109.3	040.6	148.7	025.0000	0122.8	066.4	53.29
345.0	025.7762	0109.3	040.8	148.0	025.0000	0123.2	066.3	53.32
346.0	026.4992	0107.0	040.7	147.5	025.0000	0124.1	066.7	53.26
347.0	027.2322	0103.6	040.4	147.0	025.0000	0125.4	067.2	53.17
348.0	027.9752	0100.1	040.0	146.5	025.0000	0127.1	067.8	53.07

Exhibit 16 - B

FMCommander Single Allocation Study
01-24-2008

WZWA.A	CH 211 B	WAIJ	CH 212 B	BLED19841001DW
50.0 kW	509 M COR DA	10.0 kW	922 M COR DA	
Prot. = 60 dBu		Prot. = 60 dBu		
Intef. = 54 dBu		Intef. = 54 dBu		

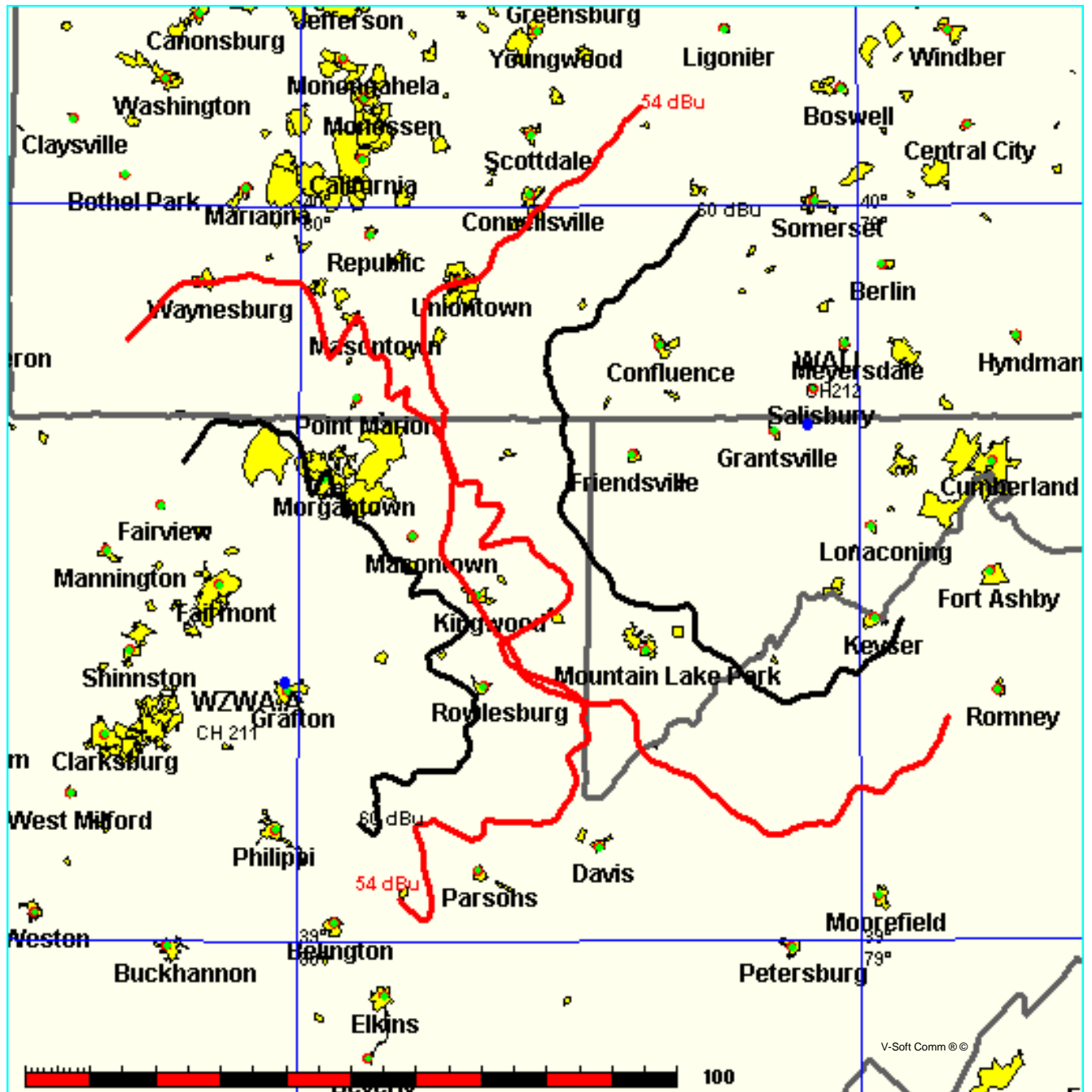


Exhibit 16 - C

FMCommander Single Allocation Study
01-24-2008

WZWA.A	CH 211 B	AP5051	CH 209 A	BNPED20071022BOQ
50.0 kW	509 M COR DA	0.1 kW,	429 M COR DA	
Prot. =	60 dBu	Prot. =	60 dBu	
Intef. =	100 dBu	Intef. =	100 dBu	

