

TECHNICAL EXHIBIT  
AMENDMENT TO PENDING  
DTV APPLICATION  
STATION KRXI-TV  
RENO, NEVADA  
CH 44     950 KW (MAX-DA)     836 M

Technical Narrative

This Technical Exhibit supports an application for digital television (DTV) station KRXI-TV for its DTV operation at Reno, Nevada. This application requests a amendment to the pending construction permit (CP) for KRXI-DT digital television operation on channel 44 at Reno with directional effective radiated power of 950 kilowatts.<sup>1</sup> KRXI-DT intends to use a Dielectric TFU "Tri-Lobe" type of directional antenna.

Proposed Facilities

Station KRXI-TV proposes to operate DTV channel 44 from its licensed DTV site. The antenna height above average terrain for the channel 44 DTV operations will remain 836 meters. An allocation study was completed to ensure no prohibited interference would occur.

---

<sup>1</sup> See BLCDT-20080619AIG.

The proposed DTV transmitter site will continue to be located atop at the existing tower site. Therefore, the proposed site location is:

39° 35' 23" North Latitude  
119° 55' 37" West Longitude

A sketch of antenna and pertinent elevations are included as Figure 1.

Figure 2 is a map showing the proposed DTV predicted coverage contour. The extent of the contours have been calculated using the normal FCC prediction method.

#### Population Served

The herein proposed KRXI-TV facility is predicted to serve 527,500 persons.

#### Allocation Considerations

The proposed KRXI-TV Channel 44 facility meets the requirements of Section 73.623 of the FCC Rules concerning predicted interference to other facilities. Longley-Rice interference analyses were conducted pursuant to the requirements of the FCC Rules; OET Bulletin No. 69; and published FCC guidelines for preparation of such interference analyses. The Longley-Rice interference analyses were conducted using the software developed by du Treil, Lundin &

Rackley, Inc. based on the FCC published software routines.<sup>2</sup> Stations selected for analysis were determined pursuant to the distance requirements outlined in the FCC DTV Processing Guidelines Public Notice. The proposed facility will meet the 0.5% criterion outlined in the FCC Rules and published guidelines with respect to all considered stations.<sup>3</sup>

#### Radiofrequency Electromagnetic Field Exposure

A radiofrequency electromagnetic survey will be completed upon construction of the proposed facility to ensure no exposure in excess of the Commission's uncontrolled environment standard is accessible at ground level.

Access to the transmitting site is restricted and appropriately marked with warning signs. As this is a multi-user site an agreement between the stations will control access. In the event that workers or other authorized personnel enter restricted areas or climb the tower, appropriate measures will be taken to assure worker safety with respect to radio frequency radiation exposure. Such measures include reducing the average exposure by spreading out the work over a longer period of time, wearing "accepted" RFR protective clothing and/or RFR exposure monitors or scheduling work when the stations are at reduced power or shut down. The proposed KRXI-TV

---

<sup>2</sup> The duTreil, Lundin & Rackley, Inc. DTV interference analysis program is based on the program and procedures outlined by the FCC in the Sixth Report and Order; subsequent Memorandum Opinion and Order; and FCC OET Bulletin No. 69. A nominal grid size resolution of 2 km was employed.

<sup>3</sup> Interference analysis results reflect the net change in interference to a given station considering the interference predicted to occur from all other stations (i.e. "masking") including the allotment facility for KRXI-DT. This properly reflects the net interference change for determining compliance with the FCC 0.5% *de minimis* standard.

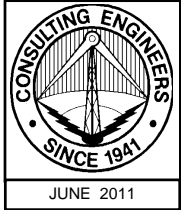
operation appears to be otherwise categorically excluded from environmental processing.

It is noted that this statement only addresses the potential for radiofrequency electromagnetic field exposure. All other aspects of the environmental processing analysis will be or already have been provided to the FCC by the tower owner.

Charles Cooper

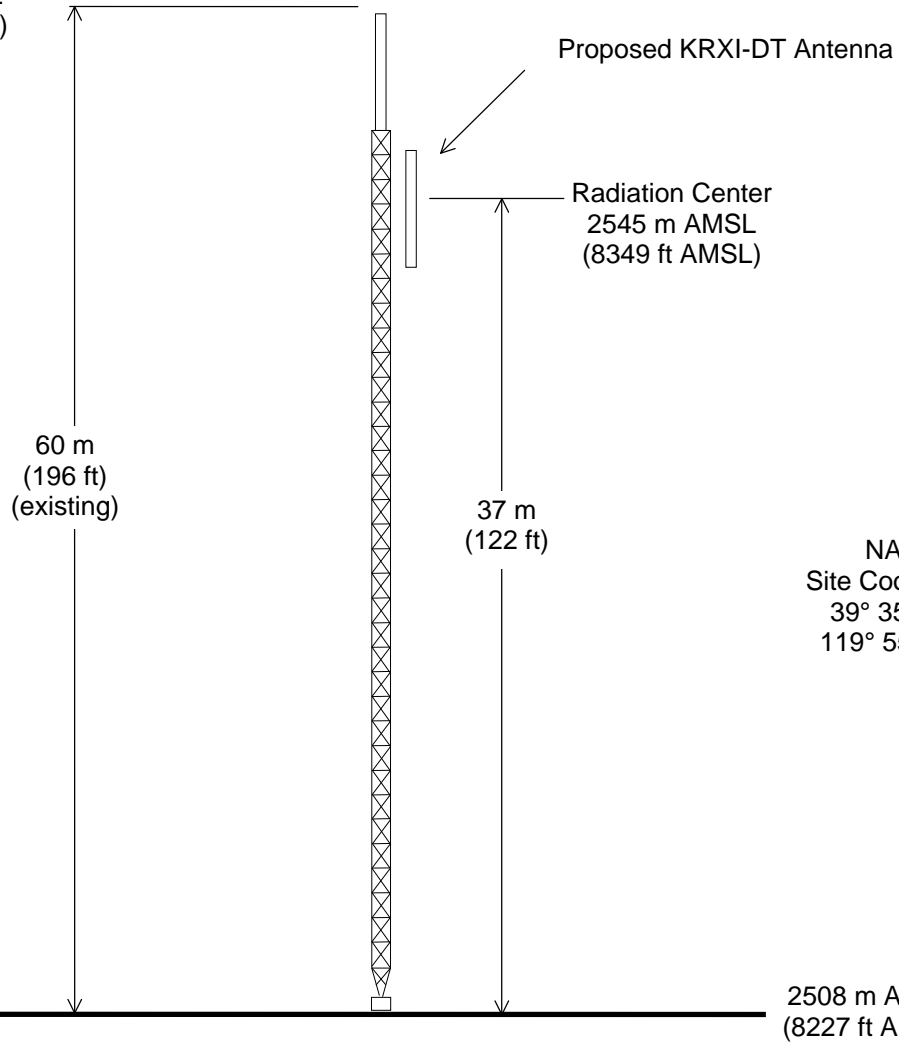
du Treil, Lundin & Rackley, Inc.  
201 Fletcher Avenue  
Sarasota, Florida 32437  
941.329.6000

June 10, 2011



ASRN: 1010555

2567 m AMSL  
(8423 ft AMSL)



NAD27  
Site Coordinates:  
39° 35' 23" N  
119° 55' 37" W

Not to Scale


## ANTENNA AND SUPPORTING STRUCTURE

DTV STATION KRXI-TV

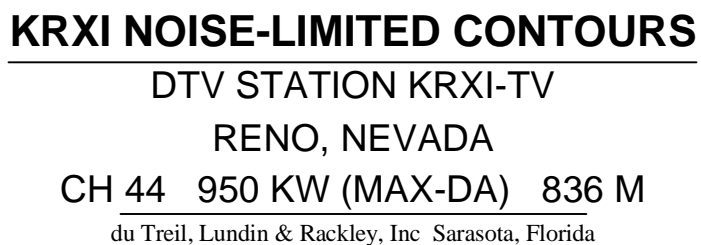
RENO, NEVADA

CH 44 950 KW (MAX-DA) 836 M

du Treil, Lundin &amp; Rackley, Inc. Sarasota, Florida



JUNE 2011



**Figure 3**

Percent allowed new interference: 0.500  
Percent allowed new interference to non Class A LPTV: 2.000  
TW Census data selected 2000  
Data Base Selected  
/export/home/cdbb/pt\_tvdb.sff

WARNING WARNING WARNING

The following list of station records has been excluded from the analysis due to the fact that they have the same state, city and channel as the proposed station - This could cause the program to not find a potential fail situation

You can force the program to include these records by setting the state of the proposed record to ZZ and re-running the analysis

|         |    |      |    |       |             |
|---------|----|------|----|-------|-------------|
| KRXI-TV | 44 | RENO | NV | BPCDT | 20080619AIG |
| KRXI-TV | 44 | RENO | NV | BPCDT | 20080619AIG |
| KRXI-TV | 44 | RENO | NV | BLCDT | 20060707ACZ |

TV INTERFERENCE and SPACING ANALYSIS PROGRAM

Date: 06-10-2011 Time: 17:36:31

Record Selected for Analysis

KRXI USERRECORD-01 RENO NV US  
Channel 44 ERP 950. kW HAAT 836. m RCAMSL 02545 m  
Latitude 039-35-23 Longitude 0119-55-37  
Status APP Zone 2 Border Site number: 01  
Dir Antenna Make CDB Model 00000000087666 Beam tilt N Ref Azimuth 20.  
Last update Cutoff date Docket  
Comments  
Applicant

Cell Size for Service Analysis 2.0 km/side

Distance Increments for Longley-Rice Analysis 0.50 km

Facility (site # 01) does not meet maximum height/power limits  
Channel 44 ERP = 950.00 HAAT = 836.

| Site number | 1       |        |                   |
|-------------|---------|--------|-------------------|
| Azimuth     | ERP     | HAAT   | 41.0 dBu F(50,90) |
| (Deg)       | (kW)    | (m)    | (km)              |
| 0.0         | 489.997 | 929.1  | 127.1             |
| 45.0        | 888.189 | 1003.1 | 137.1             |
| 90.0        | 418.068 | 962.0  | 126.6             |
| 135.0       | 668.087 | 1029.7 | 134.5             |
| 180.0       | 774.231 | 731.0  | 124.7             |
| 225.0       | 421.378 | 669.0  | 115.7             |
| 270.0       | 901.242 | 495.0  | 113.2             |

**Figure 3**

315.0            552.317            868.0            126.4

Evaluation toward Class A Stations from site # 01

Contour overlap to Class A station

KRNS-CA 46 RENO, ETC                    NV BLTTA            20051114AFU

Contour overlap to Class A station

KRNS-CA 46 RENO, ETC.                    NV BSTA            20110218AAD

Class A Evaluation Complete

SPACING VIOLATION FOUND BETWEEN STATION

KRXI            44 RENO                    NV USERRECORD01            Site # 01

and station

SHORT TO: KRXI-TV 44 RENO                    NV DTVPLN            DTVP1587

39 -35-23 119 -55-37

Req. separation 223.7 Actual separation 0.0 Short 223.7 km

LANDMOBILE SPACING VIOLATIONS FOUND

NONE from Site # 01

Checks to Site Number 01

Proposed facility OK to FCC Monitoring Stations

Proposed facility OK toward West Virginia quiet zone

Proposed facility OK toward Table Mountain

Proposed facility is beyond the Canadian coordination distance

Proposed facility is beyond the Mexican coordination distance

Proposed station is OK toward AM broadcast stations

\*\*\*\*\*

Start of Interference Analysis



Figure 3

| Channel | Proposed Station<br>Call | City/State | ARN          |
|---------|--------------------------|------------|--------------|
| 44      | KRXI                     | RENO NV    | USERRECORD01 |

Stations Potentially Affected by Proposed Station

| Chan | Call    | City/State    | Dist(km) | Status | Application | Ref. No.    |
|------|---------|---------------|----------|--------|-------------|-------------|
| 43   | KHSL-TV | CHICO CA      | 158.0    | LIC    | BLCDDT      | 20080711ADS |
| 43   | NEW     | SACRAMENTO CA | 165.7    | APP    | BNPEDT      | 20030922AFV |
| 43   | NEW     | SACRAMENTO CA | 133.4    | APP    | BNPEDT      | 20030922AFW |
| 44   | KTVU    | OAKLAND CA    | 299.3    | CP MOD | BMPCDDT     | 20080619AIJ |
| 46   | KRNS-CA | RENO, ETC NV  | 31.0     | LIC    | BLTTA       | 20051114AFU |
| 46   | KRNS-CA | RENO, ETC. NV | 31.0     | APP    | BSTA        | 20110218AAD |

%%%

Analysis of Interference to Affected Station 1

Analysis of current record

| Channel | Call    | City/State | Application | Ref. No.     |
|---------|---------|------------|-------------|--------------|
| 43      | KHSL-TV | CHICO CA   | BLCDDT      | -20080711ADS |

Stations Potentially Affecting This Station

| Chan | Call    | City/State    | Dist(km) | Status | Application   | Ref. No.     |
|------|---------|---------------|----------|--------|---------------|--------------|
| 43   | KGMC    | CLOVIS CA     | 377.0    | CP MOD | BMPCDDT       | -20080620AAE |
| 43   | KGMC    | CLOVIS CA     | 415.1    | LIC    | BLCDDT        | -20090612AIA |
| 43   | NEW     | SACRAMENTO CA | 174.4    | APP    | BNPEDT        | -20030922AFV |
| 43   | NEW     | SACRAMENTO CA | 165.0    | APP    | BNPEDT        | -20030922AFW |
| 43   | KCSM-TV | SAN MATEO CA  | 253.0    | LIC    | BLEDT         | -20091124AHY |
| 44   | KRXI-TV | RENO NV       | 158.0    | PLN    | DTVPLN        | -DTVPL1587   |
| 44   | KRXI    | RENO NV       | 158.0    | APP    | USERRECORD-01 |              |

Proposed station is beyond the site to  
nearest cell evaluation distance

#####

Analysis of Interference to Affected Station 2

Analysis of current record

| Channel | Call | City/State    | Application | Ref. No.     |
|---------|------|---------------|-------------|--------------|
| 43      | NEW  | SACRAMENTO CA | BNPEDT      | -20030922AFV |

Stations Potentially Affecting This Station

| Chan | Call    | City/State   | Dist(km) | Status | Application | Ref. No.     |
|------|---------|--------------|----------|--------|-------------|--------------|
| 43   | KHSL-TV | CHICO CA     | 174.4    | LIC    | BLCDDT      | -20080711ADS |
| 43   | KGMC    | CLOVIS CA    | 215.6    | CP MOD | BMPCDDT     | -20080620AAE |
| 43   | KGMC    | CLOVIS CA    | 251.4    | LIC    | BLCDDT      | -20090612AIA |
| 43   | KCSM-TV | SAN MATEO CA | 136.6    | LIC    | BLEDT       | -20091124AHY |
| 44   | KTVU    | OAKLAND CA   | 136.6    | CP MOD | BMPCDDT     | -20080619AIJ |

**Figure 3**

|    |         |         |       |     |               |           |
|----|---------|---------|-------|-----|---------------|-----------|
| 44 | KRXI-TV | RENO NV | 165.7 | PLN | DTVPLN        | -DTVP1587 |
| 44 | KRXI    | RENO NV | 165.7 | APP | USERRECORD-01 |           |

Proposal causes no interference

#####

### Analysis of Interference to Affected Station 3

#### Analysis of current record

| Channel | Call | City/State    | Application | Ref. No.     |
|---------|------|---------------|-------------|--------------|
| 43      | NEW  | SACRAMENTO CA | BNPEDT      | -20030922AFW |

#### Stations Potentially Affecting This Station

| Chan | Call    | City/State   | Dist(km) | Status | Application   | Ref. No.     |
|------|---------|--------------|----------|--------|---------------|--------------|
| 43   | KHSL-TV | CHICO CA     | 165.0    | LIC    | BLCDDT        | -20080711ADS |
| 43   | KGMC    | CLOVIS CA    | 213.4    | CP MOD | BMPCDDT       | -20080620AAE |
| 43   | KGMC    | CLOVIS CA    | 251.0    | LIC    | BLCDDT        | -20090612AIA |
| 43   | KCSM-TV | SAN MATEO CA | 170.0    | LIC    | BLEDT         | -20091124AHY |
| 44   | KTVU    | OAKLAND CA   | 170.0    | CP MOD | BMPCDDT       | -20080619AIJ |
| 44   | KRXI-TV | RENO NV      | 133.4    | PLN    | DTVPLN        | -DTVP1587    |
| 44   | KRXI    | RENO NV      | 133.4    | APP    | USERRECORD-01 |              |

Proposal causes no interference

#####

### Analysis of Interference to Affected Station 4

#### Analysis of current record

| Channel | Call | City/State | Application | Ref. No.     |
|---------|------|------------|-------------|--------------|
| 44      | KTVU | OAKLAND CA | BMPCDDT     | -20080619AIJ |

#### Stations Potentially Affecting This Station

| Chan | Call    | City/State       | Dist(km) | Status | Application   | Ref. No.     |
|------|---------|------------------|----------|--------|---------------|--------------|
| 43   | NEW     | SACRAMENTO CA    | 136.6    | APP    | BNPEDT        | -20030922AFV |
| 43   | NEW     | SACRAMENTO CA    | 170.0    | APP    | BNPEDT        | -20030922AFW |
| 43   | KCSM-TV | SAN MATEO CA     | 0.0      | LIC    | BLEDT         | -20091124AHY |
| 44   | KRXI-TV | RENO NV          | 299.3    | PLN    | DTVPLN        | -DTVP1587    |
| 45   | KBCW    | SAN FRANCISCO CA | 0.0      | LIC    | BLCDDT        | -20020709AAQ |
| 45   | KBCW    | SAN FRANCISCO CA | 0.0      | CP     | BPCDDT        | -20080603AAH |
| 44   | KRXI    | RENO NV          | 299.3    | APP    | USERRECORD-01 |              |

Total scenarios = 4

Result key: 1  
 Scenario 1 Affected station 4  
 Before Analysis

Results for: 44A CA OAKLAND BMPCDDT 20080619AIJ CP  
 HAAT 512.0 m, ATV ERP 1000.0 kW  
 POPULATION AREA (sq km)

### Figure 3

|                                |         |         |
|--------------------------------|---------|---------|
| within Noise Limited Contour   | 7401991 | 35289.7 |
| not affected by terrain losses | 6488976 | 29602.8 |
| lost to NTSC IX                | 0       | 0.0     |
| lost to additional IX by ATV   | 52      | 16.1    |
| lost to ATV IX only            | 52      | 16.1    |
| lost to all IX                 | 52      | 16.1    |

Potential Interfering Stations Included in above Scenario 1

44A NV RENO DTVPLN DTVP1587 PLN

## After Analysis

Results for: 44A CA OAKLAND                      BMPCDT                      20080619AIJ                      CP

HAAT 512.0 m, ATV ERP 1000.0 kW

|                                | POPULATION | AREA (sq km) |
|--------------------------------|------------|--------------|
| within Noise Limited Contour   | 7401991    | 35289.7      |
| not affected by terrain losses | 6488976    | 29602.8      |
| lost to NTSC IX                | 0          | 0.0          |
| lost to additional IX by ATV   | 32335      | 321.3        |
| lost to ATV IX only            | 32335      | 321.3        |
| lost to all IX                 | 32335      | 321.3        |

Potential Interfering Stations Included in above Scenario 1

44A NV RENO USERRECORD01 APP

Percent new IX = 0.4975%

|                 |   |                  |   |
|-----------------|---|------------------|---|
| Result key:     | 2 |                  |   |
| Scenario        | 2 | Affected station | 4 |
| Before Analysis |   |                  |   |

Results for: 44A CA OAKLAND                      BMPCDT                      20080619AIJ                      CP

HAAT 512.0 m, ATV ERP 1000.0 kW

|                                | POPULATION | AREA (sq km) |
|--------------------------------|------------|--------------|
| within Noise Limited Contour   | 7401991    | 35289.7      |
| not affected by terrain losses | 6488976    | 29602.8      |
| lost to NTSC IX                | 0          | 0.0          |
| lost to additional IX by ATV   | 1448       | 44.2         |
| lost to ATV IX only            | 1448       | 44.2         |
| lost to all IX                 | 1448       | 44.2         |

Potential Interfering Stations Included in above Scenario 2

43A CA SACRAMENTO BNPEDT 20030922AFV APP

44A NV RENO DTVPLN DTVP1587 PLN

## After Analysis

Results for: 44A CA OAKLAND                      BMPCDT                      20080619AIJ                      CP

HAAT 512.0 m, ATV ERP 1000.0 kW

|                                | POPULATION | AREA (sq km) |
|--------------------------------|------------|--------------|
| within Noise Limited Contour   | 7401991    | 35289.7      |
| not affected by terrain losses | 6488976    | 29602.8      |
| lost to NTSC IX                | 0          | 0.0          |
| lost to additional IX by ATV   | 33643      | 333.3        |

**Figure 3**

|                     |       |       |
|---------------------|-------|-------|
| lost to ATV IX only | 33643 | 333.3 |
| lost to all IX      | 33643 | 333.3 |

Potential Interfering Stations Included in above Scenario 2

|                   |              |             |     |
|-------------------|--------------|-------------|-----|
| 43A CA SACRAMENTO | BNPEDT       | 20030922AFV | APP |
| 44A NV RENO       | USERRECORD01 |             | APP |

Percent new IX = 0.4963%

Result key: 3  
Scenario 3 Affected station 4  
Before Analysis

Results for: 44A CA OAKLAND BMPCDT 20080619AIJ CP  
HAAT 512.0 m, ATV ERP 1000.0 kW

|                                |            |              |
|--------------------------------|------------|--------------|
|                                | POPULATION | AREA (sq km) |
| within Noise Limited Contour   | 7401991    | 35289.7      |
| not affected by terrain losses | 6488976    | 29602.8      |
| lost to NTSC IX                | 0          | 0.0          |
| lost to additional IX by ATV   | 7185       | 281.1        |
| lost to ATV IX only            | 7185       | 281.1        |
| lost to all IX                 | 7185       | 281.1        |

Potential Interfering Stations Included in above Scenario 3

|                   |        |             |     |
|-------------------|--------|-------------|-----|
| 43A CA SACRAMENTO | BNPEDT | 20030922AFW | APP |
| 44A NV RENO       | DTVPLN | DTVP1587    | PLN |

After Analysis

Results for: 44A CA OAKLAND BMPCDT 20080619AIJ CP  
HAAT 512.0 m, ATV ERP 1000.0 kW

|                                |            |              |
|--------------------------------|------------|--------------|
|                                | POPULATION | AREA (sq km) |
| within Noise Limited Contour   | 7401991    | 35289.7      |
| not affected by terrain losses | 6488976    | 29602.8      |
| lost to NTSC IX                | 0          | 0.0          |
| lost to additional IX by ATV   | 35527      | 490.0        |
| lost to ATV IX only            | 35527      | 490.0        |
| lost to all IX                 | 35527      | 490.0        |

Potential Interfering Stations Included in above Scenario 3

|                   |              |             |     |
|-------------------|--------------|-------------|-----|
| 43A CA SACRAMENTO | BNPEDT       | 20030922AFW | APP |
| 44A NV RENO       | USERRECORD01 |             | APP |

Percent new IX = 0.4373%

Result key: 4  
Scenario 4 Affected station 4  
Before Analysis

Results for: 44A CA OAKLAND BMPCDT 20080619AIJ CP  
HAAT 512.0 m, ATV ERP 1000.0 kW

|                                |            |              |
|--------------------------------|------------|--------------|
|                                | POPULATION | AREA (sq km) |
| within Noise Limited Contour   | 7401991    | 35289.7      |
| not affected by terrain losses | 6488976    | 29602.8      |

**Figure 3**

|                              |    |      |
|------------------------------|----|------|
| lost to NTSC IX              | 0  | 0.0  |
| lost to additional IX by ATV | 52 | 16.1 |
| lost to ATV IX only          | 52 | 16.1 |
| lost to all IX               | 52 | 16.1 |

Potential Interfering Stations Included in above Scenario 4

44A NV RENO DTVPLN DTVP1587 PLN

After Analysis

Results for: 44A CA OAKLAND BMPCDT 20080619AIJ CP  
 HAAT 512.0 m, ATV ERP 1000.0 kW

|                                |            |              |
|--------------------------------|------------|--------------|
|                                | POPULATION | AREA (sq km) |
| within Noise Limited Contour   | 7401991    | 35289.7      |
| not affected by terrain losses | 6488976    | 29602.8      |
| lost to NTSC IX                | 0          | 0.0          |
| lost to additional IX by ATV   | 32335      | 321.3        |
| lost to ATV IX only            | 32335      | 321.3        |
| lost to all IX                 | 32335      | 321.3        |

Potential Interfering Stations Included in above Scenario 4

44A NV RENO USERRECORD01 APP

Percent new IX = 0.4975%

Worst case new IX 0.4975% Scenario 1

#####

Analysis of Interference to Affected Station 5

Analysis of current record

| Channel | Call    | City/State   | Application | Ref. No.     |
|---------|---------|--------------|-------------|--------------|
| 46      | KRNS-CA | RENO, ETC NV | BLTTA       | -20051114AFU |

Stations Potentially Affecting This Station

| Chan | Call    | City/State         | Dist(km) | Status | Application   | Ref. No.     |
|------|---------|--------------------|----------|--------|---------------|--------------|
| 43   | NEW     | SACRAMENTO CA      | 113.2    | APP    | BNPEDT        | -20030922AFW |
| 44   | KRXI-TV | RENO NV            | 31.0     | PLN    | DTVPLN        | -DTVP1587    |
| 45   | K45GZ   | DAYTON NV          | 36.9     | LIC    | BLTT          | -20020715AAH |
| 45   | K45GZ   | DAYTON NV          | 36.9     | APP    | BPTT          | -20000824AAR |
| 45   | NEW     | FERNLEY NV         | 63.7     | APP    | BNPDTL        | -20100512AGX |
| 46   | KQCA    | STOCKTON CA        | 181.5    | LIC    | BLCDT         | -20060623AAM |
| 46   | K46HL   | SUSANVILLE CA      | 132.4    | CP     | BPTT          | -20080611ACD |
| 46   | K46HL   | SUSANVILLE, ETC CA | 132.3    | CP     | BDFCDTT       | -20100330ADD |
| 46   | K46CC   | SCHURZ NV          | 94.0     | LIC    | BLTTV         | -19890516IF  |
| 46   | K46CC   | SHURZ NV           | 93.9     | CP     | BDFCDTT       | -20100430ADP |
| 47   | K47NI-D | CARSON CITY NV     | 16.5     | CP     | BNPDTL        | -20100326ADE |
| 47   | K47KJ-D | VERDI NV           | 29.7     | LIC    | BLDTT         | -20090102ABO |
| 44   | KRXI    | RENO NV            | 31.0     | APP    | USERRECORD-01 |              |

Proposal causes no interference

**Figure 3**

#####

# Analysis of Interference to Affected Station 6

## Analysis of current record

| Channel | Call    | City/State    | Application | Ref. No.     |
|---------|---------|---------------|-------------|--------------|
| 46      | KRNS-CA | RENO, ETC. NV | BSTA        | -20110218AAD |

## Stations Potentially Affecting This Station

| Chan | Call    | City/State         | Dist(km) | Status | Application   | Ref. No.     |
|------|---------|--------------------|----------|--------|---------------|--------------|
| 43   | NEW     | SACRAMENTO CA      | 113.2    | APP    | BNPEDT        | -20030922AFW |
| 44   | KRXI-TV | RENO NV            | 31.0     | PLN    | DTVPLN        | -DTVP1587    |
| 45   | K45GZ   | DAYTON NV          | 36.9     | LIC    | BLTT          | -20020715AAH |
| 45   | K45GZ   | DAYTON NV          | 36.9     | APP    | BPTT          | -20000824AAR |
| 46   | KQCA    | STOCKTON CA        | 181.5    | LIC    | BLCDDT        | -20060623AAM |
| 46   | K46HL   | SUSANVILLE CA      | 132.4    | CP     | BPTT          | -20080611ACD |
| 46   | K46HL   | SUSANVILLE, ETC CA | 132.3    | CP     | BDFCDTT       | -20100330ADD |
| 46   | K46CC   | SCHURZ NV          | 94.0     | LIC    | BLTTV         | -19890516IF  |
| 46   | K46CC   | SHURZ NV           | 93.9     | CP     | BDFCDTT       | -20100430ADP |
| 47   | K47NI-D | CARSON CITY NV     | 16.5     | CP     | BNPDTL        | -20100326ADE |
| 47   | K47KJ-D | VERDI NV           | 29.7     | LIC    | BLDDT         | -20090102ABO |
| 44   | KRXI    | RENO NV            | 31.0     | APP    | USERRECORD-01 |              |

Total scenarios = 1

Result key: 5  
Scenario 1 Affected station 6  
Before Analysis

|                                |            |              |     |
|--------------------------------|------------|--------------|-----|
| Results for: 46N NV RENO, ETC. | BSTA       | 20110218AAD  | APP |
|                                | POPULATION | AREA (sq km) |     |
| within Noise Limited Contour   | 198861     | 1095.5       |     |
| not affected by terrain losses | 155004     | 938.5        |     |
| lost to NTSC IX                | 0          | 0.0          |     |
| lost to additional IX by ATV   | 3907       | 4.0          |     |
| lost to all IX                 | 3907       | 4.0          |     |

Potential Interfering Stations Included in above Scenario 1

|              |       |             |     |
|--------------|-------|-------------|-----|
| 47A NV VERDI | BLDDT | 20090102ABO | LIC |
|--------------|-------|-------------|-----|

## After Analysis

|                                |            |              |     |
|--------------------------------|------------|--------------|-----|
| Results for: 46N NV RENO, ETC. | BSTA       | 20110218AAD  | APP |
|                                | POPULATION | AREA (sq km) |     |
| within Noise Limited Contour   | 198861     | 1095.5       |     |
| not affected by terrain losses | 155004     | 938.5        |     |
| lost to NTSC IX                | 0          | 0.0          |     |
| lost to additional IX by ATV   | 3966       | 8.1          |     |
| lost to all IX                 | 3966       | 8.1          |     |

Potential Interfering Stations Included in above Scenario 1

Figure 3

47A NV VERDI                      BLDTT        20090102ABO    LIC  
44A NV RENO                      USERRECORD01                      APP

Percent new IX =        0.0297%

Worst case new IX        0.0297% Scenario        1

#####

### Analysis of Interference to Affected Station    7

#### Analysis of current record

| Channel | Call | City/State | Application Ref. No. |
|---------|------|------------|----------------------|
| 44      | KRXI | RENO NV    | USERRECORD-01        |

#### Stations Potentially Affecting This Station

| Chan | Call    | City/State    | Dist(km) | Status | Application Ref. No.      |
|------|---------|---------------|----------|--------|---------------------------|
| 43   | KHSL-TV | CHICO CA      | 158.0    | LIC    | BLCDT        -20080711ADS |
| 43   | NEW     | SACRAMENTO CA | 165.7    | APP    | BNPEDT       -20030922AFV |
| 43   | NEW     | SACRAMENTO CA | 133.4    | APP    | BNPEDT       -20030922AFW |
| 44   | KTVU    | OAKLAND CA    | 299.3    | CP MOD | BMPCDT       -20080619AIJ |

Total scenarios =    1

Result key:            6  
Scenario            1    Affected station            7  
Before Analysis

Results for: 44A NV RENO                      USERRECORD01                      APP  
HAAT 836.0 m, ATV ERP 950.0 kW

|                                | POPULATION | AREA (sq km) |
|--------------------------------|------------|--------------|
| within Noise Limited Contour   | 705159     | 48910.4      |
| not affected by terrain losses | 527468     | 30461.2      |
| lost to NTSC IX                | 0          | 0.0          |
| lost to additional IX by ATV   | 0          | 0.0          |
| lost to ATV IX only            | 0          | 0.0          |
| lost to all IX                 | 0          | 0.0          |

Potential Interfering Stations Included in above Scenario        1

#####

FINISHED FINISHED FINISHED FINISHED FINISHED FINISHED