

Compliance with 47 C.F.R. 73.525**Introduction**

There are several considerations outlined in 47 C.F.R. 73.525 for TV channel 6 protection. Outlined below are the various factors as they apply to the proposed operation and KVIE.

Distance between proposed operation and KVIE

47 C.F.R. 73.525(a)(1) requires a minimum separation of 196 kilometers for a channel 207 operation. The distance between the proposed station and KVIE is 70.55 kilometers.

Population Limitation

When a proposed non-commercial station is not co-located with the channel 6 station in question, the applicant is required to show that the interference area (as predicted by the procedures outlined in 47 C.F.R. 73.525(e)(1)) contains no more than 3,000 persons. The actual population figures are contained in Exhibit 19-B, and a map of the interference area is shown in Exhibit 19-A.

Vertically Polarized Transmissions

When an applicant wishes to use vertically polarized transmissions only, C.F.R. 74.525(e)(4) limits the vertical ERP to the maximum permissible horizontally polarized ERP multiplied by 40 (if the predicted interference area lies entirely outside the limits of a city of 50,000 persons) or 10 (if not). The maximum permissible horizontally polarized ERP for the proposed facility is 0.0113 kilowatts (See Exhibit 19-A). Since the predicted interference area lies entirely outside the limits of a city of 50,000 persons, that is multiplied by 40 to obtain the vertical-only ERP of 0.45 kilowatts specified in this application.

Discussion

Population in the predicted interference area was determined using the centroid method and the 2000 census. The predicted 67.3 dBu interference contour (of the theoretical horizontal component of 0.0113 kilowatts) is contained within the KVIE channel 6 grade B (47 dBu F(50,50)) contour (see Exhibit 19-A).

Additionally shown in exhibit 19-A is a population scattergraph of the area of proposed operation. A population report of the area contained within the predicted interfering contour is included at Exhibit 19-B. The total population contained within the interfering contour is 72 persons.

Educational Media Foundation

5700 West Oaks Boulevard ♦ Rocklin ♦ California ♦ 95765

Exhibit 19

San Andreas, CA

Conclusion

For the reasons outlined above, the proposed operation fully complies with the provisions of 47 C.F.R. 73.525.

Exhibit 19 - A

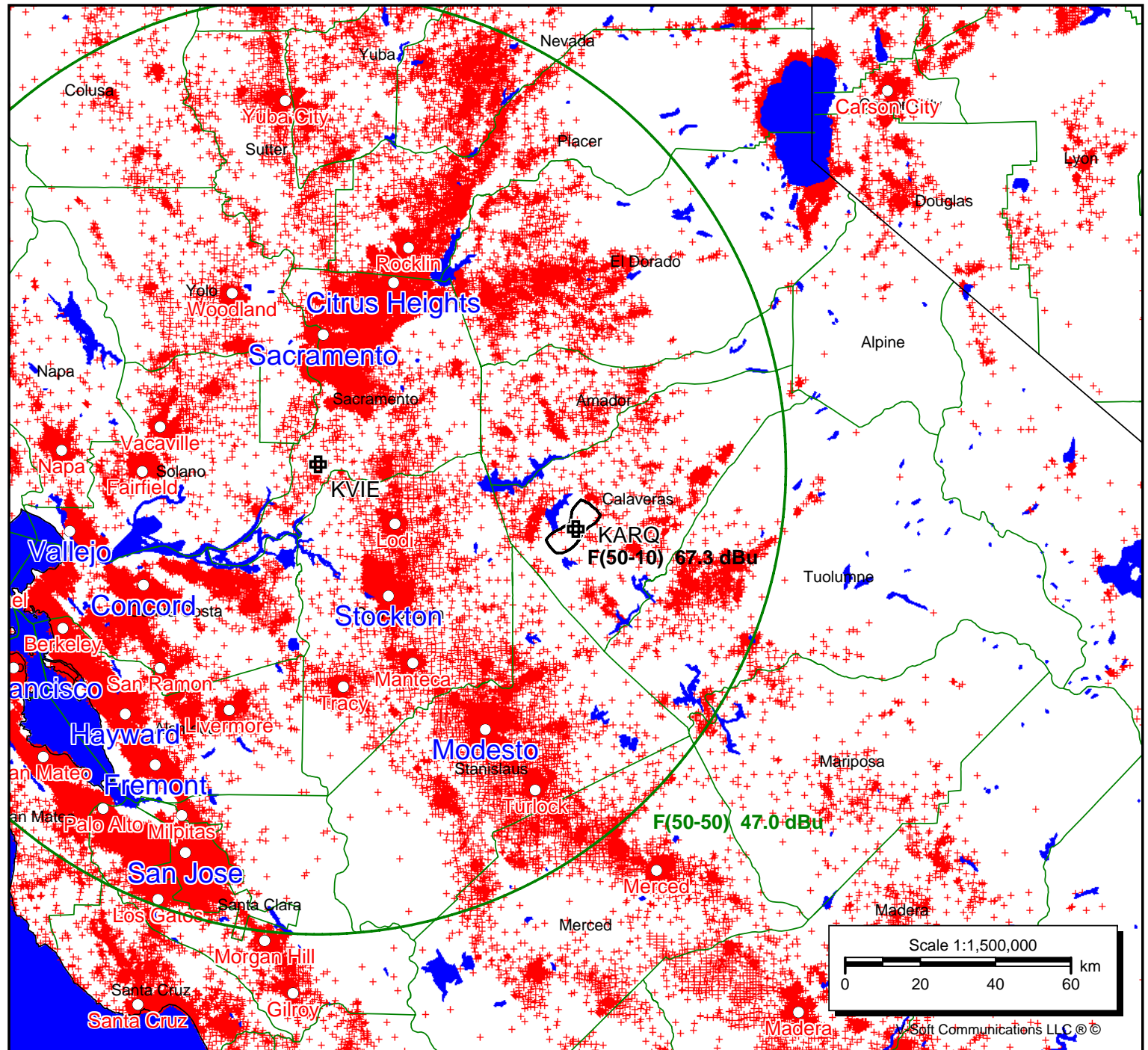
KARQ

Latitude: 38-07-10 N
Longitude: 120-43-27 W
ERP: 0.0113 kW
Channel: 207
Frequency: 89.3 MHz
AMSL Height: 945.0 m
Horiz. Pattern: Directional
Vert. Pattern: No
Prop Model: None

KVIE

BLET20030328ANE
Latitude: 38-16-18 N
Longitude: 121-30-22 W
ERP: 100.00 kW
Channel: 06Z
Frequency: 85.0 MHz
AMSL Height: 553.0 m
Horiz. Pattern: Omni
Vert. Pattern: Yes
Elec Tilt: 0.0
Prop Model: None

 KARQ
 KVIE



Educational Media Foundation

5700 West Oaks Boulevard ♦ Rocklin ♦ California ♦ 95765

Exhibit 19-B

San Andreas, CA

Population Report

V-Soft Communications Population Report

Contour Parameters:

Type: FCC Contour

F(50-10) FS: 67.30 dBu [360 Radials]

Population Database: 2000 US Census (SF1)

Primary Terrain: V-Soft 30 Second US Database

Secondary Terrain: V-Soft 3 Second US Terrain

Transmitter Information:

Call Letters: KARQ

Latitude: 38-07-10 N

Longitude: 120-43-27 W

ERP: 0.0113 kW

Channel: 207

Frequency: 89.3 MHz

AMSL Height: 945.0 m

Elevation: 761.23 m

HAAT: 586.84 m

Horiz. Antenna Pattern: Directional

Vert. Elevation Pattern: No

Total Population Within Contour: 72

Total Area Within Contour: 89.52 sq. km
