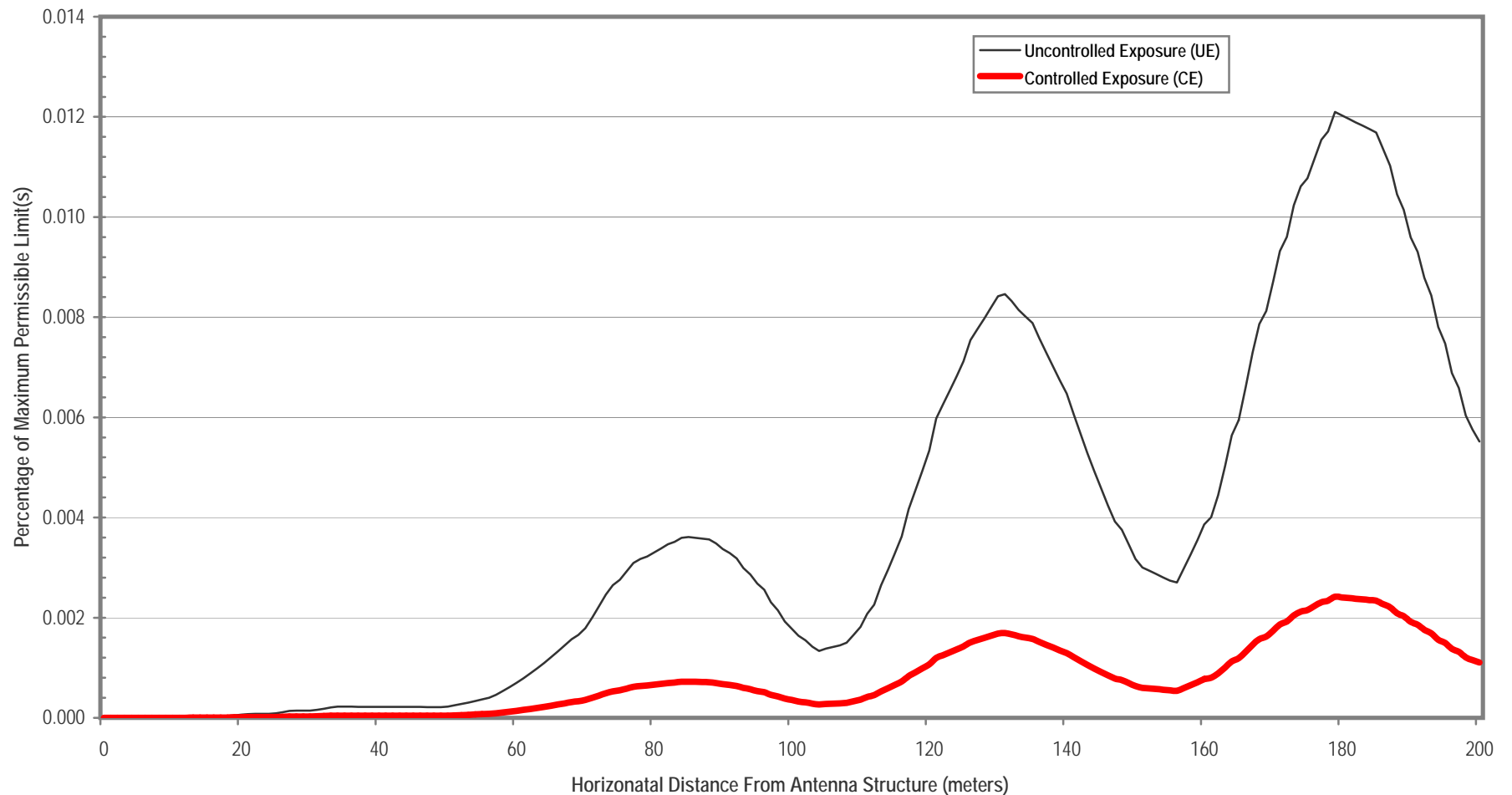


PREDICTED GROUND LEVEL EXPOSURE
(Pursuant to FCC OET Bulletin 65, ed. 97-01)



STATION INFORMATION		ANTENNA TYPE		ANALYSIS PARAMETERS		MAXIMUM PERMISSIBLE LIMITS	
Call Sign:	WAOW	Make & Model:	DIE TW-9B9-R(S)	Antenna RCAGL(m):	175.0	General UE ($\mu\text{W}/\text{cm}^2$):	200.0
Location:	Wausau, WI	Elevation pattern / equivalent:	DIE_TW-9B9	Exposure height AGL(m):	2	Occupational CE ($\mu\text{W}/\text{cm}^2$):	1,000.0
Service:	DT	SITE DESCRIPTION		>> Critical slope distance(m):	248.9	GROUND LEVEL EXPOSURE	
Frequency(MHz):	186			Ground reflection factor:	2.56		
(P)peak or (A)vg power:	A	Accessible to public:	No	Isotropic factor:	1.64	Peak power density ($\mu\text{W}/\text{cm}^2$):	0.0
ERP in Watts (H+V):	16600	>> Plot uncontrolled exposure:	Yes	>> Resultant multiplier	33.41	>> Horizontal distance(m):	179.0
Aural ERP(%):		Radius of controlled Area (m):	0	Maximum study distance(m):	200	Percentage of UE limit:	0.012%
>> Total average power:	16600	Elevation change per meter:	0	Pertinent direction of study:	All	Percentage of CE limit:	0.002%