

KESSLER AND GEHMAN ASSOCIATES, INC.

ENGINEERING STATEMENT OF RYAN WILHOUR OF THE FIRM OF
KESSLER AND GEHMAN ASSOCIATES, INC., CONSULTING ENGINEERS IN
CONNECTION WITH A MINOR MODIFICATION CHANNEL DISPLACEMENT
APPLICATION TO A LICENSED CLASS “A” DIGITAL TELEVISION STATION
WJGV-CD
FCC FILE NUMBER BLDTA-20090930AKO
PENTECOSTAL REVIVAL ASSOCIATION, INC.
PALATKA, FLORIDA

NARRATIVE STATEMENT

This firm has been retained by Pentecostal Revival Association, Inc. to prepare engineering studies and the engineering portion of FCC Form 301-CA for a minor modification channel displacement relief application to the above referenced licensed Class A digital television broadcast station WJGV-CD.

This application proposes to make the following changes to FCC license number BLDTA-20090930AKO:

- Substitute the directional antenna for an omni-directional antenna.
- Correct the coordinates of the existing transmitter site.
- Change broadcast channel pursuant to section 73.3572(a)(4)(iv)(A)(1).
- Reduce the effective antenna height above average terrain.
- Increase the ERP.

WJGV-CD (FCC File No.: BLDTA-20090930AKO) is currently licensed to use digital Channel 48. Pursuant to Section 73.3572, a TV translator may at any time file a

KESSLER AND GEHMAN ASSOCIATES, INC.

displacement relief application for a change in output channel if it is located within 265 km of a co-channel DTV facility. The WJGV-CD licensed facility (FCC File No.: BLDTA-20090930AKO) is located 166.2 km from the WFXU-TV licensed facility (FCC File No.: BLCDT-20071113ACD) and as such is well within the 265 km spacing criteria for permitting channel displacement. The proposed facility will completely envelope the licensed facility coverage area, and completely serve the community of license as demonstrated in exhibit E4.

ENGINEERING EXHIBITS

In carrying out the engineering studies the following attached exhibits were prepared:

1. Proposed engineering specifications (Exhibit E1)
2. Elevation drawing of the antenna system (Exhibit E2)
4. USGS 7.5 minute topographic quadrangle showing the proposed transmitter location and coordinate lines (Exhibit E3)
5. Map demonstrating the predicted and licensed coverage contours (Exhibit E4)
6. Exhibits demonstrating interference compliance (Exhibit E5)
7. Environmental impact / RFR hazard analysis and methodology (Exhibit E6)

INTERFERENCE ANALYSIS

The following stations were analyzed for potential interference:

Chan	Call	City/State	Dist(km)	Status	Application	Ref. No.
24	NEW	GAINESVILLE FL	84.2	APP	BNPDTL	-20090825ANO
24	WESH	OCALA FL	58.7	APP	BDRTCDT	-20090819AAD
24	WVCI-LD	ORLANDO FL	113.0	CP	BDISDTL	-20090220AAQ
24	WPXC-TV	BRUNSWICK GA	138.7	LIC	BLCDT	-20060607ABQ
24	WPXC-TV	BRUNSWICK GA	138.7	PLN	DTVPLN	-DTVP0865
24	WPXC-TV	BRUNSWICK GA	138.7	CP	BPCDT	-20080619AFQ
25	NEW	CHIPLEY FL	393.2	APP	BNPDTL	-20090825AWD
25	NEW	GAINESVILLE FL	84.2	APP	BNPDTL	-20090825AOD
25	WVEA-TV	VENICE FL	203.2	LIC	BLCDT	-20060627ABX

KESSLER AND GEHMAN ASSOCIATES, INC.

WJGV-CD – PALATKA, FL

PAGE 3

25	WVEA-TV	VENICE FL	203.2	PLN	DTVPLN	-DTVP0905
25	WBWP-LP	WEST PALM BEACH FL	347.5	CP	BDISDTL	-20081216BJG
25	WBWP-LP	WEST PALM BEACH FL	347.5	APP	BMPDTL	-20100209ABH
25	NEW	ALBANY GA	324.8	APP	BNPDTL	-20090825AHS
25	W25CQ	STATESBORO GA	306.2	LIC	BLTT	-19990603JE
25	W25CP	VALDOSTA GA	216.5	LIC	BLTT	-20000627AHI
25	WQIX-LD	VIDALIA GA	300.7	CP	BNPTTL	-20000828AEZ
25	WQIX-LD	VIDALIA GA	255.4	CP	BDFCDTL	-20080903ABP
26	WXAX-LP	CLEARWATER FL	200.3	APP	BPTTA	-20080804ACE
26	WGVTV-LD	GAINESVILLE FL	68.6	LIC	BLDTL	-20080605AAQ
26	W26DP-D	INVERNESS FL	101.5	LIC	BLDTT	-20100122AAL
26	WGVTV-LD	LIVE OAK FL	137.1	CP	BPTTL	-20070905ABC
26	W26BN	MELBOURNE FL	187.4	LIC	BLTTL	-19980123JB
26	WKMG-TV	ORLANDO FL	124.4	CP MOD	BMPCDT	-20080620AJM
26	WKMG-TV	ORLANDO FL	124.4	PLN	DTVPLN	-DTVP0937
26	WXAX-LP	TAMPA FL	200.2	LIC	BLTTA	-20040729AEH
27	WOCD-LP	DUNNELLON FL	105.3	LIC	BLTTL	-20090331AEX
27	W08DM	GAINESVILLE FL	36.1	APP	BPTTL	-20021003ABC
27	WWRJ-LP	JACKSONVILLE FL	78.9	CP	BPTTL	-20060403AOM
27	WWRJ-LP	JACKSONVILLE FL	83.0	LIC	BLTTL	-20011213ABF
28	WDYB-LP	DAYTONA BEACH FL	74.8	CP	BDISTTA	-20060922ACY
28	WQXT-CA	ST. AUGUSTINE FL	47.3	CP	BDISTTA	-20070625AAL
29	WTBZ-LP	GAINESVILLE FL	84.2	LIC	BLTTL	-20050907ABX
29	W29AB	OCALA FL	58.6	LIC	BLTT	-19820713IG
33	W33BL	CHIEFLAND FL	107.7	LIC	BLTTL	-19960415IC
33	WBXG-CA	GAINESVILLE FL	69.8	APP	BMPTTA	-20020510AAK
33	WBXG-CA	GAINESVILLE FL	70.0	LIC	BLTTA	-20030911AAZ
33	WUJF-LP	LAKE CITY FL	78.9	APP	BSTA	-20061113AFW
33	WUJF-LP	MAXVILLE FL	78.9	LIC	BLTTL	-20070119ADT
33	W33AL	BRUNSWICK GA	177.3	LIC	BLTT	-19901119ID

As demonstrated in Exhibit E5, none of the stations above are predicted to receive non-compliant interference.

ENVIRONMENTAL IMPACT / RFR HAZARD ANALYSIS

An analysis has been made of the human exposure to RFR using the calculation methodology described in OET Bulletin 65, Edition, 97-01. Exhibit E6 is a RFR study demonstrating compliance within 5% of the most restrictive permissible exposure at any location 2 meters above the ground (See Methodology). Exhibit E6 calculations were made using a frequency of 536 MHz, which is the lower edge of the proposed channel. To account for ground reflections, a coefficient of 1.6 was included in the calculations.

Pursuant to OET Bulletin 65 concerning multiple-user transmitter sites only those licensees whose transmitters produce power density levels greater than 5.0% of the exposure limit are considered significant contributors to RFR. Since the proposed operation is well within 5%

of the most permissible exposure at any location 2 meters above the ground, it is not considered a significant contributor to RFR exposure. Thus, contributions to exposure from other RF sources in the vicinity of WJGV-CD were not taken into account. The instant proposal complies with the FCC limits for human exposure to RF radiation and thus is excluded from further environmental processing.

The applicant will cooperate with any other users of the tower by reducing the power to the antenna or if necessary completely cutting it off in order to protect maintenance workers on the tower.

DECLARATION OF ENGINEER

The foregoing statement and the report regarding the aforementioned engineering work are true and correct to the best of my knowledge. Executed on February 19, 2010.

KESSLER AND GEHMAN ASSOCIATES, INC.



Ryan Wilhour
Consulting Engineer

ENGINEERING SPECIFICATIONS

A. Transmitter Site (NAD 27):

N. Latitude: 29° 34' 48.0"

W. Longitude: 81° 41' 57.1"

FCC Tower Registration Number: 1054337

FAA Study Number: 2010-ASO-867-OE

B. Proposed Facility:

Channel: 25

Frequency: 536-542 MHz

Emission Mask: Stringent

C. Antenna and Other Elevations:

Height of Site Above Mean Sea Level (AMSL) 3.9 m

Overall Height of Structure Above Ground 111.9 m

(including all appurtenances)

Overall Height of Structure Above Mean Sea Level 115.8 m

(including all appurtenances)

Average Terrain 8.0 m

Effective Height of Antenna Above Ground 106.2 m

Effective Height of Antenna Above Average Terrain 102.1 m

Effective Height of Antenna Above Mean Sea Level 110.1 m

D. Antenna Parameters - Horizontal Polarization:

Average TPO Power Required Watts 400 W

Average TPO Power Required dBW 26.0 dBW

Transmission Line Loss 0.74 dB

Maximum Antenna Gain in Beam Maximum 14.5 dBd

Maximum Effective Radiated Power 9.78 dBk

In Beam Maximum 9.5 kW

KESSLER & GEHMAN

TELECOMMUNICATIONS CONSULTING ENGINEERS

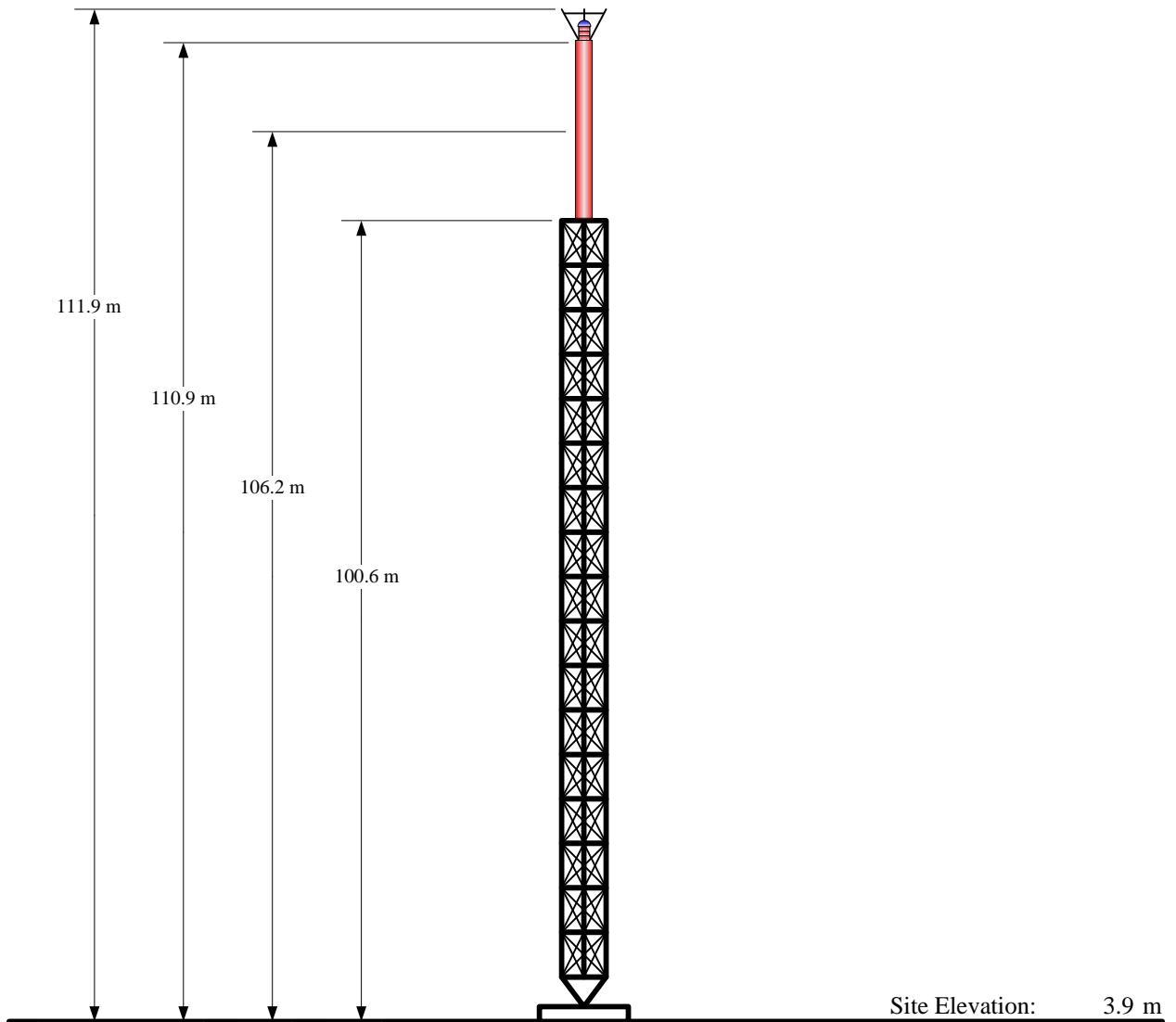
507 N.W. 60th Street, Suite C
Gainesville, Florida 32607

WJGV-CD

PALATKA, FLORIDA

20100219

EXHIBIT E1



Overall Height AGL:	111.9 m
Overall Height AMSL:	115.8 m
Radiation Center AGL:	106.2 m
Radiation Center AMSL:	110.1 m
Radiation Center HAAT:	102.1 m
Average Terrain:	8.0 m

NAD 27 Coordinates:

N. Latitude: 29° 34' 48.0"

W. Longitude: 81° 41' 57.1"

FCC Tower Registration Number: 1054337

FAA Aeronautical Study Number: 2010-ASO-867-OE

NOTE: NOT TO SCALE

KESSLER & GEHMAN

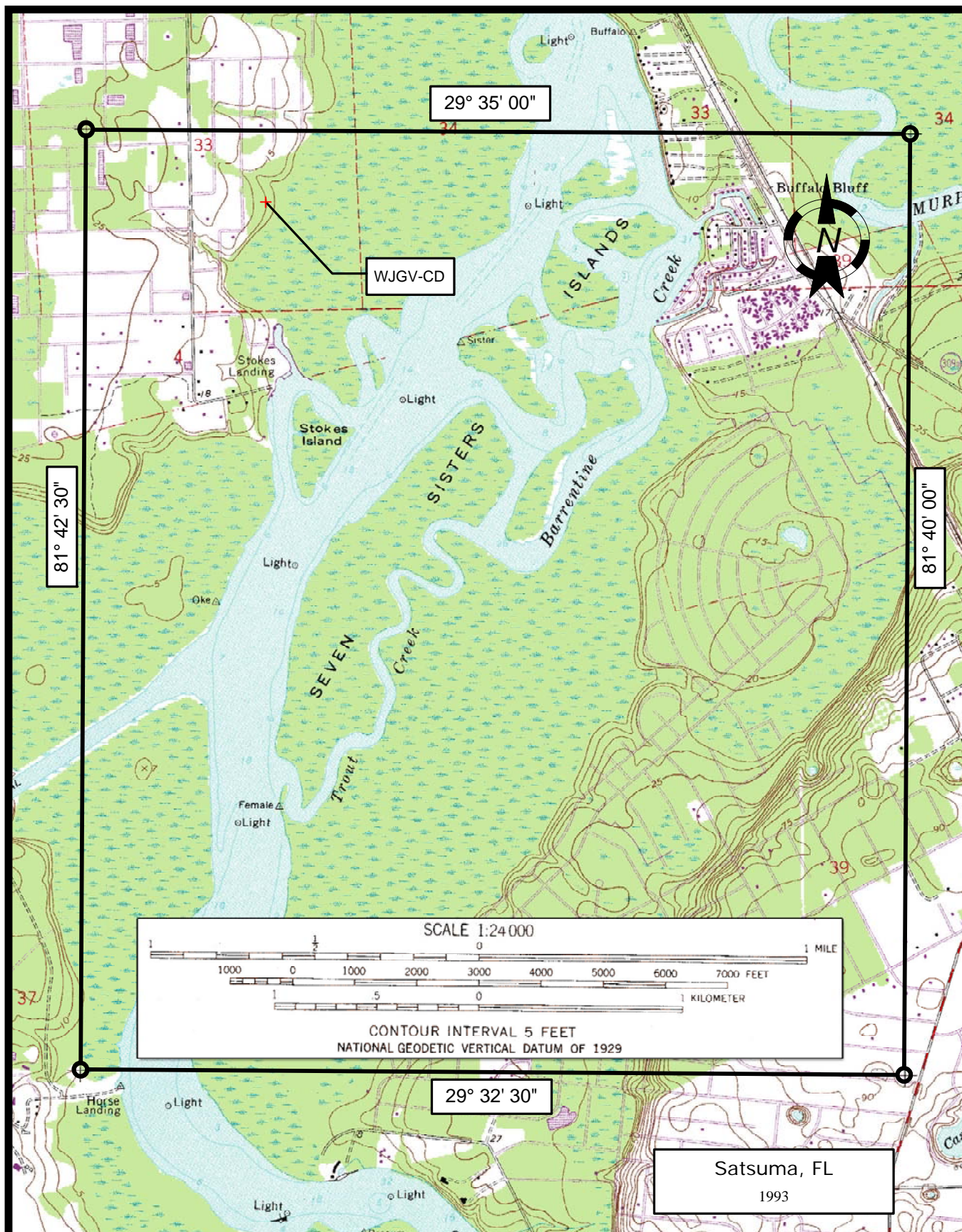
TELECOMMUNICATIONS CONSULTING ENGINEERS
507 N.W. 60th Street, Suite C
Gainesville, Florida 32607

WJGV-CD

PALATKA, FLORIDA

20100219

EXHIBIT E2



KESSLER & GEHMAN

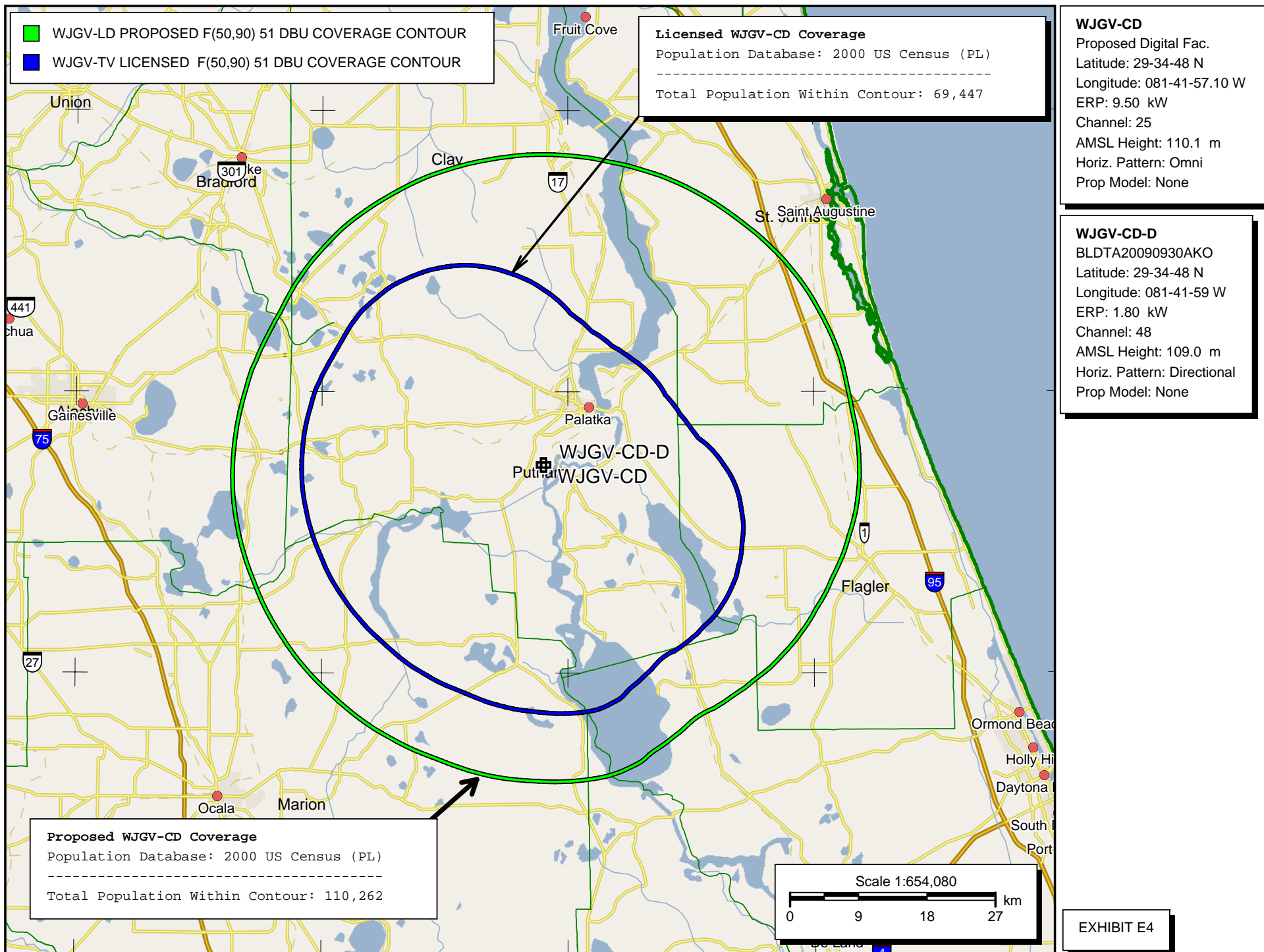
TELECOMMUNICATIONS CONSULTING ENGINEERS
507 N.W. 60th Street, Suite C
Gainesville, Florida 32607

WJGV-CD

PALATKA, FLORIDA

20100219

EXHIBIT E3



KESSLER AND GEHMAN ASSOCIATES, INC.

WJGV-CD - PALATKA,FL

Exhibit E5, PAGE 1 of 33

Census data selected: 2000

Post DTV Transition Database Selected

TV INTERFERENCE and SPACING ANALYSIS PROGRAM

Date: 02-19-2010 Time: 09:02:54

Record Selected for Analysis

WJGV-CD USERRECORD-01 PALATKA FL US
Channel 25 ERP 9.5 kW HAAT 102. m RCMSL 00110 m STRINGENT MASK
Latitude 029-34-48 Longitude 0081-41-57
Status APP Zone 3 Border
Dir Antenna Make usr Model USRPAT01 Beam tilt N Ref Azimuth 0.
Last update Cutoff date Docket
Comments
Applicant

Cell Size for Service Analysis 1.0 km/side

Distance Increments for Longley-Rice Analysis 1.00 km

Not full service station

Facility meets maximum power limit

Azimuth (Deg)	ERP (kW)	HAAT (m)	51.0 dBu F(50,90) (km)
0.0	9.500	100.3	40.5
45.0	9.500	105.8	41.1
90.0	9.500	106.8	41.2
135.0	9.500	90.2	39.2
180.0	9.500	108.2	41.3
225.0	9.500	103.7	40.8
270.0	9.500	101.4	40.6
315.0	9.500	99.5	40.4

Contour Overlap to Proposed Station

Station
WVEA-TV 25 VENICE FL BLCDT20060627ABX causes

Contour overlap to Digital LPTV station
WJGV-CD 25 PALATKA FL USERRECORD01

Contour Overlap Evaluation to Proposed Station Complete

LANDMOBILE SPACING VIOLATIONS FOUND

NONE

Proposed facility OK to FCC Monitoring Stations

Proposed facility OK toward West Virginia quiet zone

Proposed facility OK toward Table Mountain

KESSLER AND GEHMAN ASSOCIATES, INC.

WJGV-CD - PALATKA,FL

Exhibit E5, PAGE 2 of 33

Proposed facility is beyond the Canadian coordination distance

Proposed facility is beyond the Mexican coordination distance

Proposed station is OK toward AM broadcast stations

Start of Interference Analysis

Channel	Proposed Station Call	City/State	ARN
25	WJGV-CD	PALATKA FL	USERRECORD01

Stations Potentially Affected by Proposed Station

Chan	Call	City/State	Dist(km)	Status	Application	Ref. No.
24	NEW	GAINESVILLE FL	84.2	APP	BNPDTL	-20090825ANO
24	WESH	OCALA FL	58.7	APP	BDRTCDT	-20090819AAD
24	WVCI-LD	ORLANDO FL	113.0	CP	BDISDTL	-20090220AAQ
24	WPXC-TV	BRUNSWICK GA	138.7	LIC	BLCDT	-20060607ABQ
24	WPXC-TV	BRUNSWICK GA	138.7	PLN	DTVPLN	-DTVP0865
24	WPXC-TV	BRUNSWICK GA	138.7	CP	BPCDT	-20080619AFQ
25	NEW	CHIPLEY FL	393.2	APP	BNPDTL	-20090825AWD
25	NEW	GAINESVILLE FL	84.2	APP	BNPDTL	-20090825AOD
25	WVEA-TV	VENICE FL	203.2	LIC	BLCDT	-20060627ABX
25	WVEA-TV	VENICE FL	203.2	PLN	DTVPLN	-DTVP0905
25	WBWP-LP	WEST PALM BEACH FL	347.5	CP	BDISDTL	-20081216BJG
25	WBWP-LP	WEST PALM BEACH FL	347.5	APP	BMPDTL	-20100209ABH
25	NEW	ALBANY GA	324.8	APP	BNPDTL	-20090825AHS
25	W25CQ	STATESBORO GA	306.2	LIC	BLTT	-19990603JE
25	W25CP	VALDOSTA GA	216.5	LIC	BLTT	-20000627AHI
25	WQIX-LD	VIDALIA GA	255.4	CP	BDFCDTL	-20080903ABP
25	WQIX-LD	VIDALIA GA	300.7	CP	BNPTTL	-20000828AEZ
26	WXAX-LP	CLEARWATER FL	200.3	APP	BPTTA	-20080804ACE
26	WGVV-LD	GAINESVILLE FL	68.6	LIC	BLDTL	-20080605AAQ
26	W26DP-LD	INVERNESS FL	101.5	LIC	BLDTT	-20100122AAL
26	WGVV-LD	LIVE OAK FL	137.1	CP	BPTTL	-20070905ABC
26	W26BN	MELBOURNE FL	187.4	LIC	BLTTL	-19980123JB
26	WKMG-TV	ORLANDO FL	124.4	CP MOD	BMPCDT	-20080620AJM
26	WKMG-TV	ORLANDO FL	124.4	PLN	DTVPLN	-DTVP0937
26	WXAX-LP	TAMPA FL	200.2	LIC	BLTTA	-20040729AEH
27	WOCB-LP	DUNNELLON FL	105.3	LIC	BLTTL	-20090331AEX
27	W08DM	GAINESVILLE FL	36.1	APP	BPTTL	-20021003ABC
27	WWRJ-LP	JACKSONVILLE FL	78.9	CP	BPTTL	-20060403AOM
27	WWRJ-LP	JACKSONVILLE FL	83.0	LIC	BLTTL	-20011213ABF
28	WDYB-LP	DAYTONA BEACH FL	74.8	CP	BDISTTA	-20060922ACY
28	WQXT-CA	ST. AUGUSTINE FL	47.3	CP	BDISTTA	-20070625AAL
29	WTBZ-LP	GAINESVILLE FL	84.2	LIC	BLTTL	-20050907ABX
29	W29AB	OCALA FL	58.6	LIC	BLTT	-19820713IG
33	W33BL	CHIEFLAND FL	107.7	LIC	BLTTL	-19960415IC
33	WBXG-CA	GAINESVILLE FL	69.8	APP	BMPTTA	-20020510AAK
33	WBXG-CA	GAINESVILLE FL	70.0	LIC	BLTTA	-20030911AAZ
33	WUJF-LP	LAKE CITY FL	78.9	APP	BSTA	-20061113AFW
33	WUJF-LP	MAXVILLE FL	78.9	LIC	BLTTL	-20070119ADT
33	W33AL	BRUNSWICK GA	177.3	LIC	BLTT	-19901119ID

Analysis of Interference to Affected Station 1

Analysis of current record

Channel	Call	City/State	Application	Ref. No.
24	NEW	GAINESVILLE FL	BNPDTL	-20090825ANO

Stations Potentially Affecting This Station

KESSLER AND GEHMAN ASSOCIATES, INC.

WJGV-CD - PALATKA,FL

Exhibit E5, PAGE 3 of 33

Chan	Call	City/State	Dist(km)	Status	Application	Ref. No.
23	W23DG	GAINESVILLE FL	7.2	LIC	BLTTL	-20090629AAH
23	WUBF-LP	JACKSONVILLE FL	131.1	APP	BDFCDTL	-20090127AEU
23	NEW	MADISON FL	147.8	APP	BNPDTL	-20090825AHQ
23	NEW	TALLAHASSEE FL	198.1	APP	BNPDTL	-20091019ACC
23	NEW	VALDOSTA GA	172.5	APP	BNPDTL	-20090825AHJ
24	WTPH-LD	FORT MYERS FL	308.3	CP	BDCCDTL	-20061030ALS
24	WESH	OCALA FL	43.8	APP	BDRTCDT	-20090819AAD
24	WVC-LD	ORLANDO FL	143.0	CP	BDISDTL	-20090220AAQ
24	NEW	PANAMA CITY FL	339.9	APP	BNPDTL	-20090825AVR
24	NEW	PANAMA CITY FL	319.1	APP	BNPDTL	-20090825BWW
24	WWSB	SARASOTA FL	207.8	CP	BPCDT	-20080212AAB
24	WWSB	SARASOTA FL	207.8	PLN	DTVPLN	-DTVP0863
24	NEW	SEBASTIAN FL	273.9	APP	BNPDTL	-20090825BZB
24	WTLF	TALLAHASSEE FL	216.1	LIC	BLCDT	-20030303ABF
24	WTLF	TALLAHASSEE FL	216.1	PLN	DTVPLN	-DTVP0864
24	WTLF	TALLAHASSEE FL	216.1	CP	BPCDT	-20040514ACK
24	NEW	WABASSO FL	276.9	APP	BNPDTL	-20090825AAT
24	NEW	ALBANY GA	287.1	APP	BNPDTL	-20090825CAC
24	WPXC-TV	BRUNSWICK GA	174.9	LIC	BLCDT	-20060607ABQ
24	WPXC-TV	BRUNSWICK GA	174.9	PLN	DTVPLN	-DTVP0865
24	WPXC-TV	BRUNSWICK GA	174.9	CP	BPCDT	-20080619AFQ
24	NEW	COLUMBUS GA	405.5	APP	BNPDTL	-20090825ABO
24	NEW	COLUMBUS GA	404.7	APP	BNPDTL	-20090825BAZ
24	NEW	WARNER ROBINS GA	382.6	APP	BNPDTL	-20090825AFP
25	NEW	GAINESVILLE FL	0.0	APP	BNPDTL	-20090825AOD
25	WJGV-CD	PALATKA FL	84.2	APP	USERRECORD-01	

Proposal causes no interference

#####

Analysis of Interference to Affected Station 2

Analysis of current record

Channel	Call	City/State	Application	Ref. No.
24	WESH	OCALA FL	BDRTCDT	-20090819AAD

Stations Potentially Affecting This Station

Chan	Call	City/State	Dist(km)	Status	Application	Ref. No.
23	WUBF-LP	JACKSONVILLE FL	131.7	APP	BDFCDTL	-20090127AEU
23	NEW	MADISON FL	189.4	APP	BNPDTL	-20090825AHQ
23	WMFE-TV	ORLANDO FL	124.4	CP MOD	BMPEDT	-20010615BEG
23	WMFE-TV	ORLANDO FL	124.4	PLN	DTVPLN	-DTVP0825
23	W23CN-D	SEBRING FL	210.4	LIC	BLDTT	-20090903AAH
23	NEW	VALDOSTA GA	209.5	APP	BNPDTL	-20090825AHJ
24	WTPH-LD	FORT MYERS FL	280.5	CP	BDCCDTL	-20061030ALS
24	NEW	GAINESVILLE FL	43.8	APP	BNPDTL	-20090825ANO
24	W24DE-D	MIAMI FL	408.9	CP MOD	BMPDTT	-20090630AEQ
24	WVC-LD	ORLANDO FL	100.4	CP	BDISDTL	-20090220AAQ
24	NEW	PANAMA CITY FL	383.1	APP	BNPDTL	-20090825AVR
24	NEW	PANAMA CITY FL	362.4	APP	BNPDTL	-20090825BWW
24	WWSB	SARASOTA FL	187.2	CP	BPCDT	-20080212AAB
24	WWSB	SARASOTA FL	187.2	PLN	DTVPLN	-DTVP0863
24	NEW	SEBASTIAN FL	231.4	APP	BNPDTL	-20090825BZB
24	WTLF	TALLAHASSEE FL	259.7	LIC	BLCDT	-20030303ABF
24	WTLF	TALLAHASSEE FL	259.7	PLN	DTVPLN	-DTVP0864
24	WTLF	TALLAHASSEE FL	259.7	CP	BPCDT	-20040514ACK
24	NEW	WABASSO FL	234.5	APP	BNPDTL	-20090825AAT
24	NEW	ALBANY GA	325.9	APP	BNPDTL	-20090825CAC
24	WPXC-TV	BRUNSWICK GA	182.0	LIC	BLCDT	-20060607ABQ
24	WPXC-TV	BRUNSWICK GA	182.0	PLN	DTVPLN	-DTVP0865
24	WPXC-TV	BRUNSWICK GA	182.0	CP	BPCDT	-20080619AFQ
24	NEW	WARNER ROBINS GA	413.6	APP	BNPDTL	-20090825AFP
25	NEW	GAINESVILLE FL	43.8	APP	BNPDTL	-20090825AOD
25	WJGV-CD	PALATKA FL	58.7	APP	USERRECORD-01	

KESSLER AND GEHMAN ASSOCIATES, INC.

WJGV-CD - PALATKA,FL

Exhibit E5, PAGE 4 of 33

Total scenarios = 2

Result key: 1
Scenario 1 Affected station 2 WESH
Before Analysis

Results for: 24A FL OCALA BDRTCDT 20090819AAD APP
HAAT 1.0 m, ATV ERP 7.0 kW
POPULATION AREA (sq km)
within Noise Limited Contour 301748 4251.7
not affected by terrain losses 301748 4251.7
lost to NTSC IX 0 0.0
lost to additional IX by ATV 0 0.0
lost to ATV IX only 0 0.0
lost to all IX 0 0.0

Potential Interfering Stations Included in above Scenario 1

After Analysis

Results for: 24A FL OCALA BDRTCDT 20090819AAD APP
HAAT 1.0 m, ATV ERP 7.0 kW
POPULATION AREA (sq km)
within Noise Limited Contour 301748 4251.7
not affected by terrain losses 301748 4251.7
lost to NTSC IX 0 0.0
lost to additional IX by ATV 43 4.9
lost to ATV IX only 43 4.9
lost to all IX 43 4.9

Potential Interfering Stations Included in above Scenario 1

25A FL PALATKA USERRECORD01 APP

Percent new IX = 0.0143%

Result key: 2
Scenario 2 Affected station 2 WESH
Before Analysis

Results for: 24A FL OCALA BDRTCDT 20090819AAD APP
HAAT 1.0 m, ATV ERP 7.0 kW
POPULATION AREA (sq km)
within Noise Limited Contour 301748 4251.7
not affected by terrain losses 301748 4251.7
lost to NTSC IX 0 0.0
lost to additional IX by ATV 2089 138.0
lost to ATV IX only 2089 138.0
lost to all IX 2089 138.0

Potential Interfering Stations Included in above Scenario 2

24A FL GAINESVILLE BNPDTL 20090825ANO APP

After Analysis

Results for: 24A FL OCALA BDRTCDT 20090819AAD APP
HAAT 1.0 m, ATV ERP 7.0 kW
POPULATION AREA (sq km)
within Noise Limited Contour 301748 4251.7
not affected by terrain losses 301748 4251.7
lost to NTSC IX 0 0.0
lost to additional IX by ATV 2132 142.9
lost to ATV IX only 2132 142.9
lost to all IX 2132 142.9

Potential Interfering Stations Included in above Scenario 2

KESSLER AND GEHMAN ASSOCIATES, INC.

WJGV-CD - PALATKA,FL

Exhibit E5, PAGE 5 of 33

24A FL GAINESVILLE BNPDTL 20090825ANO APP
25A FL PALATKA USERRECORD01 APP

Percent new IX = 0.0143%

Worst case new IX 0.0143% Scenario 2

#####

Analysis of Interference to Affected Station 3

Analysis of current record

Channel	Call	City/State	Application Ref. No.
24	WVCI-LD	ORLANDO FL	BDISDTL -20090220AAQ

Stations Potentially Affecting This Station

Chan	Call	City/State	Dist(km)	Status	Application Ref. No.
23	WUBF-LP	JACKSONVILLE FL	197.7	APP	BDFCDTL -20090127AEU
23	WMFE-TV	ORLANDO FL	31.9	CP MOD	BMPEDT -20010615BEG
23	WMFE-TV	ORLANDO FL	31.9	PLN	DTVPLN -DTVP0825
23	W23CN-D	SEBRING FL	126.6	LIC	BLDTT -20090903AAH
24	WTPH-LD	FORT MYERS FL	210.5	CP	BDCCDTL -20061030ALS
24	NEW	GAINESVILLE FL	143.0	APP	BNPDTL -20090825ANO
24	W24DE-D	MIAMI FL	314.1	CP MOD	BMPDIT -20090630AEQ
24	WESH	OCALA FL	100.4	APP	BDRTCDT -20090819AAD
24	WWSB	SARASOTA FL	147.8	CP	BPCDT -20080212AAB
24	WWSB	SARASOTA FL	147.8	PLN	DTVPLN -DTVP0863
24	NEW	SEBASTIAN FL	131.0	APP	BNPDTL -20090825BZB
24	WTLF	TALLAHASSEE FL	358.7	LIC	BLCDT -20030303ABF
24	WTLF	TALLAHASSEE FL	358.7	PLN	DTVPLN -DTVP0864
24	WTLF	TALLAHASSEE FL	358.7	CP	BPCDT -20040514ACK
24	NEW	WABASSO FL	134.1	APP	BNPDTL -20090825AAT
24	NEW	ALBANY GA	425.1	APP	BNPDTL -20090825CAC
24	WPXC-TV	BRUNSWICK GA	250.3	LIC	BLCDT -20060607ABQ
24	WPXC-TV	BRUNSWICK GA	250.3	PLN	DTVPLN -DTVP0865
24	WPXC-TV	BRUNSWICK GA	250.3	CP	BPCDT -20080619AFQ
25	NEW	GAINESVILLE FL	143.0	APP	BNPDTL -20090825AOD
25	WVEA-TV	VENICE FL	119.0	LIC	BLCDT -20060627ABX
25	WVEA-TV	VENICE FL	119.0	PLN	DTVPLN -DTVP0905
25	WJGV-CD	PALATKA FL	113.0	APP	USERRECORD-01

Proposal causes no interference

#####

Analysis of Interference to Affected Station 4

Analysis of current record

Channel	Call	City/State	Application Ref. No.
24	WPXC-TV	BRUNSWICK GA	BLCDT -20060607ABQ

Stations Potentially Affecting This Station

Chan	Call	City/State	Dist(km)	Status	Application Ref. No.
24	WWSB	SARASOTA FL	368.6	CP	BPCDT -20080212AAB
24	WWSB	SARASOTA FL	368.6	PLN	DTVPLN -DTVP0863
24	WTLF	TALLAHASSEE FL	258.6	LIC	BLCDT -20030303ABF
24	WTLF	TALLAHASSEE FL	258.6	PLN	DTVPLN -DTVP0864
24	WTLF	TALLAHASSEE FL	258.6	CP	BPCDT -20040514ACK
24	WTAT-TV	CHARLESTON SC	303.9	CP MOD	BMPEDT -20080620ADZ
24	WTAT-TV	CHARLESTON SC	303.9	PLN	DTVPLN -DTVP0888
25	WJGV-CD	PALATKA FL	138.7	APP	USERRECORD-01

Proposal causes no interference

KESSLER AND GEHMAN ASSOCIATES, INC.

WJGV-CD - PALATKA,FL

Exhibit E5, PAGE 6 of 33

#####

Analysis of Interference to Affected Station 5

Analysis of current record

Channel	Call	City/State	Application Ref. No.
24	WPXC-TV	BRUNSWICK GA	DTVPLN -DTVP0865

Stations Potentially Affecting This Station

Chan	Call	City/State	Dist(km)	Status	Application Ref. No.
24	WWSB	SARASOTA FL	368.6	CP	BPCDT -20080212AAB
24	WWSB	SARASOTA FL	368.6	PLN	DTVPLN -DTVP0863
24	WTLF	TALLAHASSEE FL	258.6	LIC	BLCDT -20030303ABF
24	WTLF	TALLAHASSEE FL	258.6	PLN	DTVPLN -DTVP0864
24	WTLF	TALLAHASSEE FL	258.6	CP	BPCDT -20040514ACK
24	WTAT-TV	CHARLESTON SC	303.9	CP MOD	BMPCDT -20080620ADZ
24	WTAT-TV	CHARLESTON SC	303.9	PLN	DTVPLN -DTVP0888
25	WJGV-CD	PALATKA FL	138.7	APP	USERRECORD-01

Proposal causes no interference

#####

Analysis of Interference to Affected Station 6

Analysis of current record

Channel	Call	City/State	Application Ref. No.
24	WPXC-TV	BRUNSWICK GA	BPCDT -20080619AFQ

Stations Potentially Affecting This Station

Chan	Call	City/State	Dist(km)	Status	Application Ref. No.
24	WWSB	SARASOTA FL	368.6	CP	BPCDT -20080212AAB
24	WWSB	SARASOTA FL	368.6	PLN	DTVPLN -DTVP0863
24	WTLF	TALLAHASSEE FL	258.6	LIC	BLCDT -20030303ABF
24	WTLF	TALLAHASSEE FL	258.6	PLN	DTVPLN -DTVP0864
24	WTLF	TALLAHASSEE FL	258.6	CP	BPCDT -20040514ACK
24	WTAT-TV	CHARLESTON SC	303.9	CP MOD	BMPCDT -20080620ADZ
24	WTAT-TV	CHARLESTON SC	303.9	PLN	DTVPLN -DTVP0888
25	WJGV-CD	PALATKA FL	138.7	APP	USERRECORD-01

Proposal causes no interference

#####

Analysis of Interference to Affected Station 7

Analysis of current record

Channel	Call	City/State	Application Ref. No.
25	NEW	CHIPLEY FL	BNPDTL -20090825AWD

Stations Potentially Affecting This Station

Chan	Call	City/State	Dist(km)	Status	Application Ref. No.
24	NEW	MONTGOMERY AL	189.5	APP	BNPDTL -20091026ABE
24	NEW	MONTGOMERY AL	193.4	APP	BNPDTL -20090825ANN
24	NEW	PANAMA CITY FL	54.8	APP	BNPDTL -20090825AVR
24	NEW	PANAMA CITY FL	48.1	APP	BNPDTL -20090825BWV
24	WTLF	TALLAHASSEE FL	113.0	LIC	BLCDT -20030303ABF
24	WTLF	TALLAHASSEE FL	113.0	PLN	DTVPLN -DTVP0864
24	WTLF	TALLAHASSEE FL	113.0	CP	BPCDT -20040514ACK
24	NEW	ALBANY GA	164.8	APP	BNPDTL -20090825CAC
24	NEW	COLUMBUS GA	203.0	APP	BNPDTL -20090825ABO
24	NEW	COLUMBUS GA	200.7	APP	BNPDTL -20090825BAZ

KESSLER AND GEHMAN ASSOCIATES, INC.

WJGV-CD - PALATKA,FL

Exhibit E5, PAGE 7 of 33

25	WKNI-LP	ANDALUSIA AL	111.7	CP	BPTTL	-20061226AAF
25	WKNI-LP	ANDALUSIA AL	111.7	CP	BDFCDTL	-20070820AAU
25	WJMY-CA	DEMOPOLIS AL	317.7	CP	BDFCDTA	-20090824ABD
25	WFNA	GULF SHORES AL	213.8	CP MOD	BMPCDT	-20080619AIV
25	WBPG	GULF SHORES AL	196.1	PLN	DTVPLN	-DTVP0900
25	NEW	MONTGOMERY AL	185.0	APP	BNPDTL	-20090825BZR
25	NEW	TUSCALOOSA AL	364.1	APP	BNPDTL	-20090825BZU
25	NEW	FORT WALTON FL	107.3	APP	BNPDTL	-20090825BWN
25	NEW	GAINESVILLE FL	325.2	APP	BNPDTL	-20090825AOD
25	NEW	ALBANY GA	164.7	APP	BNPDTL	-20090825AHS
25	WATL	ATLANTA GA	359.0	LIC	BLCDT	-20020716AAH
25	WATL	ATLANTA GA	359.0	PLN	DTVPLN	-DTVP0906
25	NEW	AUGUSTA GA	426.8	APP	BNPDTL	-20090825BBN
25	NEW	COLUMBUS GA	189.6	APP	BNPDTL	-20090825AXS
25	W61DU	COLUMBUS GA	206.4	APP	BDISDTL	-20090824AKH
25	WQIX-LD	VIDALIA GA	317.4	CP	BDFCDTL	-20080903ABP
25	W47BP	HATTIESBURG MS	373.1	APP	BDISDTT	-20090824ADZ
26	NEW	MONTGOMERY AL	192.0	APP	BNPDTL	-20091026ABD
26	W26DM-D	TALLAHASSEE FL	125.5	CP	BDCCDTL	-20061019ADT
25	WJGV-CD	PALATKA FL	393.2	APP	USERRECORD-01	

Proposed station is beyond the site to
nearest cell evaluation distance

#####

Analysis of Interference to Affected Station 8

Analysis of current record

Channel	Call	City/State	Application	Ref. No.
25	NEW	GAINESVILLE FL	BNPDTL	-20090825AOD

Stations Potentially Affecting This Station

Chan	Call	City/State	Dist(km)	Status	Application	Ref. No.
24	NEW	GAINESVILLE FL	0.0	APP	BNPDTL	-20090825ANO
24	WESH	OCALA FL	43.8	APP	BDRTCDT	-20090819AAD
24	WVCI-LD	ORLANDO FL	143.0	CP	BDISDTL	-20090220AAQ
25	NEW	CHIPLEY FL	325.2	APP	BNPDTL	-20090825AWD
25	NEW	FORT WALTON FL	408.7	APP	BNPDTL	-20090825BWN
25	WVEA-TV	VENICE FL	179.9	LIC	BLCDT	-20060627ABX
25	WVEA-TV	VENICE FL	179.9	PLN	DTVPLN	-DTVP0905
25	WBWP-LP	WEST PALM BEACH FL	378.8	CP	BDISDTL	-20081216BJG
25	WBWP-LP	WEST PALM BEACH FL	378.8	APP	BMPDTL	-20100209ABH
25	NEW	ALBANY GA	287.2	APP	BNPDTL	-20090825AHS
25	NEW	COLUMBUS GA	387.1	APP	BNPDTL	-20090825AXS
25	W61DU	COLUMBUS GA	415.2	APP	BDISDTL	-20090824AKH
25	WQIX-LD	VIDALIA GA	263.3	CP	BDFCDTL	-20080903ABP
26	WGVV-LD	GAINESVILLE FL	39.1	LIC	BLDTL	-20080605AAQ
26	W26DP-D	INVERNESS FL	61.0	LIC	BLDTT	-20100122AAL
26	W26DM-D	TALLAHASSEE FL	205.3	CP	BDCCDTL	-20061019ADT
25	WJGV-CD	PALATKA FL	84.2	APP	USERRECORD-01	

Total scenarios = 3

Result key: 3

Scenario 1 Affected station 8 NEW
Before Analysis

Results for: 25A FL GAINESVILLE BNPDTL 20090825AOD APP
HAAT 1.0 m, ATV ERP 3.0 kW

	POPULATION	AREA (sq km)
within Noise Limited Contour	196278	3175.9
not affected by terrain losses	196278	3175.9
lost to NTSC IX	0	0.0
lost to additional IX by ATV	317	8.8

KESSLER AND GEHMAN ASSOCIATES, INC.

WJGV-CD - PALATKA,FL

Exhibit E5, PAGE 8 of 33

lost to ATV IX only	317	8.8
lost to all IX	317	8.8

Potential Interfering Stations Included in above Scenario 1

26A FL GAINESVILLE	BLDTL	20080605AAQ	LIC
--------------------	-------	-------------	-----

After Analysis

Results for: 25A FL GAINESVILLE	BNPDTL	20090825AOD	APP
HAAT 1.0 m, ATV ERP 3.0 kW			

	POPULATION	AREA (sq km)
within Noise Limited Contour	196278	3175.9
not affected by terrain losses	196278	3175.9
lost to NTSC IX	0	0.0
lost to additional IX by ATV	3559	109.1
lost to ATV IX only	3559	109.1
lost to all IX	3559	109.1

Potential Interfering Stations Included in above Scenario 1

26A FL GAINESVILLE	BLDTL	20080605AAQ	LIC
25A FL PALATKA	USERRECORD01		APP

Percent new IX = 1.6544%

Result key: 4
Scenario 2 Affected station 8 NEW
Before Analysis

Results for: 25A FL GAINESVILLE	BNPDTL	20090825AOD	APP
HAAT 1.0 m, ATV ERP 3.0 kW			

	POPULATION	AREA (sq km)
within Noise Limited Contour	196278	3175.9
not affected by terrain losses	196278	3175.9
lost to NTSC IX	0	0.0
lost to additional IX by ATV	354	10.8
lost to ATV IX only	354	10.8
lost to all IX	354	10.8

Potential Interfering Stations Included in above Scenario 2

24A FL OCALA	BDRTCDT	20090819AAD	APP
26A FL GAINESVILLE	BLDTL	20080605AAQ	LIC

After Analysis

Results for: 25A FL GAINESVILLE	BNPDTL	20090825AOD	APP
HAAT 1.0 m, ATV ERP 3.0 kW			

	POPULATION	AREA (sq km)
within Noise Limited Contour	196278	3175.9
not affected by terrain losses	196278	3175.9
lost to NTSC IX	0	0.0
lost to additional IX by ATV	3559	110.1
lost to ATV IX only	3559	110.1
lost to all IX	3559	110.1

Potential Interfering Stations Included in above Scenario 2

24A FL OCALA	BDRTCDT	20090819AAD	APP
26A FL GAINESVILLE	BLDTL	20080605AAQ	LIC
25A FL PALATKA	USERRECORD01		APP

Percent new IX = 1.6358%

Result key: 5
Scenario 3 Affected station 8 NEW
Before Analysis

KESSLER AND GEHMAN ASSOCIATES, INC.

WJGV-CD - PALATKA,FL

Exhibit E5, PAGE 9 of 33

Results for: 25A FL GAINESVILLE BNPDTL 20090825AOD APP

HAAT 1.0 m, ATV ERP 3.0 kW

	POPULATION	AREA (sq km)
within Noise Limited Contour	196278	3175.9
not affected by terrain losses	196278	3175.9
lost to NTSC IX	0	0.0
lost to additional IX by ATV	317	8.8
lost to ATV IX only	317	8.8
lost to all IX	317	8.8

Potential Interfering Stations Included in above Scenario 3

26A FL GAINESVILLE BLDLTL 20080605AAQ LIC

After Analysis

Results for: 25A FL GAINESVILLE BNPDTL 20090825AOD APP

HAAT 1.0 m, ATV ERP 3.0 kW

	POPULATION	AREA (sq km)
within Noise Limited Contour	196278	3175.9
not affected by terrain losses	196278	3175.9
lost to NTSC IX	0	0.0
lost to additional IX by ATV	3559	109.1
lost to ATV IX only	3559	109.1
lost to all IX	3559	109.1

Potential Interfering Stations Included in above Scenario 3

26A FL GAINESVILLE BLDLTL 20080605AAQ LIC

25A FL PALATKA USERRECORD01 APP

Percent new IX = 1.6544%

Worst case new IX 1.6544% Scenario 1

#####

Analysis of Interference to Affected Station 9

Analysis of current record

Channel	Call	City/State	Application	Ref. No.
25	WVEA-TV	VENICE FL	BLCDDT	-20060627ABX

Stations Potentially Affecting This Station

Chan	Call	City/State	Dist(km)	Status	Application	Ref. No.
24	WWSB	SARASOTA FL	31.0	CP	BPCDDT	-20080212AAB
24	WWSB	SARASOTA FL	31.0	PLN	DTVPLN	-DTVP0863
26	WKMG-TV	ORLANDO FL	146.8	CP MOD	BMPCDDT	-20080620AJM
26	WKMG-TV	ORLANDO FL	146.8	PLN	DTVPLN	-DTVP0937
25	WJGV-CD	PALATKA FL	203.2	APP	USERRECORD-01	

Proposal causes no interference

#####

Analysis of Interference to Affected Station 10

Analysis of current record

Channel	Call	City/State	Application	Ref. No.
25	WVEA-TV	VENICE FL	DTVPLN	-DTVP0905

Stations Potentially Affecting This Station

Chan	Call	City/State	Dist(km)	Status	Application	Ref. No.
24	WWSB	SARASOTA FL	31.0	CP	BPCDDT	-20080212AAB

KESSLER AND GEHMAN ASSOCIATES, INC.

WJGV-CD - PALATKA,FL

Exhibit E5, PAGE 10 of 33

24	WWSB	SARASOTA FL	31.0	PLN	DTVPLN	-DTVP0863
26	WKMG-TV	ORLANDO FL	146.8	CP MOD	BMPCDT	-20080620AJM
26	WKMG-TV	ORLANDO FL	146.8	PLN	DTVPLN	-DTVP0937
25	WJGV-CD	PALATKA FL	203.2	APP	USERRECORD-01	

Proposal causes no interference

#####

Analysis of Interference to Affected Station 11

Analysis of current record

Channel	Call	City/State	Application Ref. No.
25	WBWP-LP	WEST PALM BEACH FL	BDISDTL -20081216BJG

Stations Potentially Affecting This Station

Chan	Call	City/State	Dist(km)	Status	Application Ref. No.
24	WTPH-LD	FORT MYERS FL	170.0	CP	BDCCDTL -20061030ALS
24	W24DE-D	MIAMI FL	91.2	CP MOD	BMPDPTT -20090630AEQ
24	NEW	SEBASTIAN FL	114.9	APP	BNPDTL -20090825BZB
24	NEW	WABASSO FL	110.7	APP	BNPDTL -20090825AAT
25	NEW	GAINESVILLE FL	378.8	APP	BNPDTL -20090825AOD
25	WIMP-CD	MIAMI FL	91.2	APP	BSTA -20090924AAI
25	WIMP-CD	MIAMI FL	91.2	LIC	BLDTA -20091029ABI
25	WIMP-CD	MIAMI FL	91.2	LIC	BLTTA -20061201BRA
25	WVEA-TV	VENICE FL	243.7	LIC	BLCDT -20060627ABX
25	WVEA-TV	VENICE FL	243.7	PLN	DTVPLN -DTVP0905
25	WJGV-CD	PALATKA FL	347.5	APP	USERRECORD-01

Proposal causes no interference

#####

Analysis of Interference to Affected Station 12

Analysis of current record

Channel	Call	City/State	Application Ref. No.
25	WBWP-LP	WEST PALM BEACH FL	BMPDTL -20100209ABH

Stations Potentially Affecting This Station

Chan	Call	City/State	Dist(km)	Status	Application Ref. No.
24	WTPH-LD	FORT MYERS FL	170.0	CP	BDCCDTL -20061030ALS
24	W24DE-D	MIAMI FL	91.2	CP MOD	BMPDPTT -20090630AEQ
24	NEW	SEBASTIAN FL	114.9	APP	BNPDTL -20090825BZB
24	NEW	WABASSO FL	110.7	APP	BNPDTL -20090825AAT
25	NEW	GAINESVILLE FL	378.8	APP	BNPDTL -20090825AOD
25	WIMP-CD	MIAMI FL	91.2	APP	BSTA -20090924AAI
25	WIMP-CD	MIAMI FL	91.2	LIC	BLDTA -20091029ABI
25	WIMP-CD	MIAMI FL	91.2	LIC	BLTTA -20061201BRA
25	WVEA-TV	VENICE FL	243.7	LIC	BLCDT -20060627ABX
25	WVEA-TV	VENICE FL	243.7	PLN	DTVPLN -DTVP0905
25	WJGV-CD	PALATKA FL	347.5	APP	USERRECORD-01

Proposal causes no interference

#####

Analysis of Interference to Affected Station 13

Analysis of current record

Channel	Call	City/State	Application Ref. No.
25	NEW	ALBANY GA	BNPDTL -20090825AHS

Stations Potentially Affecting This Station

KESSLER AND GEHMAN ASSOCIATES, INC.

WJGV-CD - PALATKA,FL

Exhibit E5, PAGE 11 of 33

Chan	Call	City/State	Dist(km)	Status	Application	Ref. No.
24	NEW	MONTGOMERY AL	217.5	APP	BNPDTL	-20091026ABE
24	NEW	MONTGOMERY AL	218.9	APP	BNPDTL	-20090825ANN
24	NEW	PANAMA CITY FL	217.7	APP	BNPDTL	-20090825AVR
24	NEW	PANAMA CITY FL	204.1	APP	BNPDTL	-20090825BWW
24	WTLF	TALLAHASSEE FL	125.9	LIC	BLCDT	-20030303ABF
24	WTLF	TALLAHASSEE FL	125.9	PLN	DTVPLN	-DTVP0864
24	WTLF	TALLAHASSEE FL	125.9	CP	BPCDT	-20040514ACK
24	NEW	ALBANY GA	0.0	APP	BNPDTL	-20090825CAC
24	NEW	COLUMBUS GA	118.4	APP	BNPDTL	-20090825ABO
24	NEW	COLUMBUS GA	117.7	APP	BNPDTL	-20090825BAZ
24	NEW	WARNER ROBINS GA	138.9	APP	BNPDTL	-20090825AFP
25	WKNI-LP	ANDALUSIA AL	221.2	CP	BDFCDTL	-20070820AAU
25	WJMY-CA	DEMOPOLIS AL	357.8	CP	BDFCDTA	-20090824ABD
25	WFNA	GULF SHORES AL	361.8	CP MOD	BMPCDT	-20080619AIV
25	WBPB	GULF SHORES AL	347.1	PLN	DTVPLN	-DTVP0900
25	NEW	MONTGOMERY AL	211.3	APP	BNPDTL	-20090825BZR
25	NEW	TUSCALOOSA AL	411.6	APP	BNPDTL	-20090825BZU
25	NEW	CHIPLEY FL	164.7	APP	BNPDTL	-20090825AWD
25	NEW	FORT WALTON FL	269.1	APP	BNPDTL	-20090825BWN
25	NEW	GAINESVILLE FL	287.2	APP	BNPDTL	-20090825AOD
25	WATL	ATLANTA GA	245.6	LIC	BLCDT	-20020716AAH
25	WATL	ATLANTA GA	245.6	PLN	DTVPLN	-DTVP0906
25	NEW	AUGUSTA GA	264.1	APP	BNPDTL	-20090825BBN
25	NEW	COLUMBUS GA	100.2	APP	BNPDTL	-20090825AXS
25	W61DU	COLUMBUS GA	128.3	APP	BDISDTL	-20090824AKH
25	WQIX-LD	VIDALIA GA	161.9	CP	BDFCDTL	-20080903ABP
26	NEW	MONTGOMERY AL	216.6	APP	BNPDTL	-20091026ABD
26	W26DM-D	TALLAHASSEE FL	124.2	CP	BDCCDTL	-20061019ADT
26	NEW	LA GRANGE GA	171.9	APP	BNPDTL	-20090825ASI
26	NEW	MACON GA	139.1	APP	BNPDTL	-20090825BPP
26	NEW	WARNER ROBINS GA	138.9	APP	BNPDTL	-20090825AFK
25	WJGV-CD	PALATKA FL	324.8	APP	USERRECORD-01	
Proposal causes no interference						

#####

Analysis of Interference to Affected Station 14

Analysis of current record

Channel	Call	City/State	Application	Ref. No.
25	W25CQ	STATESBORO GA	BLTT	-19990603JE

Stations Potentially Affecting This Station

Chan	Call	City/State	Dist(km)	Status	Application	Ref. No.
22	WJCL	SAVANNAH GA	45.0	CP MOD	BMPCDT	-20090918AAU
22	WJCL	SAVANNAH GA	44.9	PLN	DTVPLN	-DTVP0783
24	NEW	AUGUSTA GA	117.8	APP	BNPDTL	-20090825ADD
24	NEW	AUGUSTA GA	118.5	APP	BNPDTL	-20090825BBP
24	NEW	WARNER ROBINS GA	181.4	APP	BNPDTL	-20090825AFP
25	NEW	GAINESVILLE FL	334.4	APP	BNPDTL	-20090825AOD
25	NEW	ALBANY GA	245.8	APP	BNPDTL	-20090825AHS
25	WATL	ATLANTA GA	296.3	LIC	BLCDT	-20020716AAH
25	WATL	ATLANTA GA	296.3	PLN	DTVPLN	-DTVP0906
25	NEW	AUGUSTA GA	118.5	APP	BNPDTL	-20090825BBN
25	NEW	COLUMBUS GA	291.5	APP	BNPDTL	-20090825AXS
25	W61DU	COLUMBUS GA	307.6	APP	BDISDTL	-20090824AKH
25	WQIX-LD	VIDALIA GA	94.2	CP	BDFCDTL	-20080903ABP
25	WUNF-TV	ASHEVILLE NC	357.5	PLN	DTVPLN	-DTVP0915
25	WUNF-TV	ASHEVILLE NC	357.5	CP	BPEDT	-20080619AEH
25	WUNF-TV	ASHEVILLE NC	357.5	LIC	BLEDT	-20030401BAI
25	WDMC-LP	CHARLOTTE NC	337.2	CP	BDFCDTL	-20091218AAC
25	NEW	FLORENCE SC	282.1	APP	BNPDTL	-20090825AZB
26	NEW	AUGUSTA GA	153.1	APP	BNPDTL	-20090825ADX
26	NEW	MACON GA	181.2	APP	BNPDTL	-20090825BPP

KESSLER AND GEHMAN ASSOCIATES, INC.

WJGV-CD - PALATKA,FL

Exhibit E5, PAGE 12 of 33

26	NEW	WARNER ROBINS GA	181.4	APP	BNPDTL	-20090825AFK
26	NEW	WOODVILLE GA	164.6	APP	BNPDTL	-20090825BXD
26	W26CF	SUMMERVILLE SC	162.5	CP	BDFCDTT	-20060403AOI
28	WTGS	HARDEEVILLE SC	45.7	CP	BPCDT	-20080718AAH
28	WTGS	HARDEEVILLE SC	45.7	PLN	DTVPLN	-DTVP1038
33	WEBA-TV	ALLENDALE SC	98.6	LIC	BLEDT	-20050915AAY
33	WEBA-TV	ALLENDALE SC	98.6	PLN	DTVPLN	-DTVP1223
39	WSAV-TV	SAVANNAH GA	47.7	LIC	BLCDT	-20050705AAP
39	WSAV-TV	SAVANNAH GA	47.7	PLN	DTVPLN	-DTVP1392
40	NEW	AUGUSTA GA	130.7	APP	BNPDTL	-20090909AAB
25	WJGV-CD	PALATKA FL	306.2	APP	USERRECORD-01	

Proposal causes no interference

#####

Analysis of Interference to Affected Station 15

Analysis of current record

Channel	Call	City/State	Application	Ref. No.
25	W25CP	VALDOSTA GA	BLTT	-20000627AHI

Stations Potentially Affecting This Station

Chan	Call	City/State	Dist(km)	Status	Application	Ref. No.
24	NEW	GAINESVILLE FL	180.1	APP	BNPDTL	-20090825ANO
24	WTLF	TALLAHASSEE FL	106.1	LIC	BLCDT	-20030303ABF
24	WTLF	TALLAHASSEE FL	106.1	PLN	DTVPLN	-DTVP0864
24	WTLF	TALLAHASSEE FL	106.1	CP	BPCDT	-20040514ACK
24	NEW	ALBANY GA	109.1	APP	BNPDTL	-20090825CAC
25	WKNI-LP	ANDALUSIA AL	298.2	CP	BDFCDTL	-20070820AAU
25	NEW	MONTGOMERY AL	312.8	APP	BNPDTL	-20090825BZR
25	NEW	CHIPLEY FL	207.4	APP	BNPDTL	-20090825AWD
25	NEW	FORT WALTON FL	312.5	APP	BNPDTL	-20090825BWN
25	NEW	GAINESVILLE FL	180.1	APP	BNPDTL	-20090825AOD
25	WVEA-TV	VENICE FL	355.8	LIC	BLCDT	-20060627ABX
25	WVEA-TV	VENICE FL	355.8	PLN	DTVPLN	-DTVP0905
25	NEW	ALBANY GA	109.1	APP	BNPDTL	-20090825AHS
25	WATL	ATLANTA GA	339.0	LIC	BLCDT	-20020716AAH
25	WATL	ATLANTA GA	339.0	PLN	DTVPLN	-DTVP0906
25	NEW	AUGUSTA GA	294.8	APP	BNPDTL	-20090825BBN
25	NEW	COLUMBUS GA	209.1	APP	BNPDTL	-20090825AXS
25	W61DU	COLUMBUS GA	237.1	APP	BDISDTL	-20090824AKH
25	WQIX-LD	VIDALIA GA	136.1	CP	BDFCDTL	-20080903ABP
26	WGVV-LD	GAINESVILLE FL	158.1	LIC	BLDTL	-20080605AAQ
26	W26DM-D	TALLAHASSEE FL	94.6	CP	BDCCDTL	-20061019ADT
27	WTXL-TV	TALLAHASSEE FL	59.1	CP MOD	BMPCDT	-20080609AAL
27	WTXL-TV	TALLAHASSEE FL	59.1	PLN	DTVPLN	-DTVP0978
32	WFSU-TV	TALLAHASSEE FL	129.2	LIC	BLEDT	-20030730ACW
32	WFSU-TV	TALLAHASSEE FL	129.2	PLN	DTVPLN	-DTVP1168
40	WTWC-TV	TALLAHASSEE FL	58.9	CP MOD	BMPCDT	-20100128AEA
40	WTWC-TV	TALLAHASSEE FL	58.9	PLN	DTVPLN	-DTVP1426
25	WJGV-CD	PALATKA FL	216.5	APP	USERRECORD-01	

Proposal causes no interference

#####

Analysis of Interference to Affected Station 16

Analysis of current record

Channel	Call	City/State	Application	Ref. No.
25	WQIX-LD	VIDALIA GA	BDFCDTL	-20080903ABP

Stations Potentially Affecting This Station

Chan	Call	City/State	Dist(km)	Status	Application	Ref. No.
------	------	------------	----------	--------	-------------	----------

KESSLER AND GEHMAN ASSOCIATES, INC.

WJGV-CD - PALATKA,FL

Exhibit E5, PAGE 13 of 33

24	NEW	ALBANY GA	161.9	APP	BNPDTL	-20090825CAC
24	NEW	AUGUSTA GA	172.1	APP	BNPDTL	-20090825ADD
24	NEW	AUGUSTA GA	171.5	APP	BNPDTL	-20090825BBP
24	WPXC-TV	BRUNSWICK GA	125.9	LIC	BLCDT	-20060607ABQ
24	WPXC-TV	BRUNSWICK GA	125.9	PLN	DTVPLN	-DTVP0865
24	WPXC-TV	BRUNSWICK GA	125.9	CP	BPCDT	-20080619AFQ
24	NEW	WARNER ROBINS GA	149.6	APP	BNPDTL	-20090825AFP
25	WKNI-LP	ANDALUSIA AL	383.1	CP	BDFCDTL	-20070820AAU
25	NEW	MONTGOMERY AL	360.7	APP	BNPDTL	-20090825BZR
25	NEW	CHIPLEY FL	317.4	APP	BNPDTL	-20090825AWD
25	NEW	FORT WALTON FL	424.6	APP	BNPDTL	-20090825BWN
25	NEW	GAINESVILLE FL	263.3	APP	BNPDTL	-20090825AOD
25	NEW	ALBANY GA	161.9	APP	BNPDTL	-20090825AHS
25	WATL	ATLANTA GA	285.8	LIC	BLCDT	-20020716AAH
25	WATL	ATLANTA GA	285.8	PLN	DTVPLN	-DTVP0906
25	NEW	AUGUSTA GA	171.5	APP	BNPDTL	-20090825BBN
25	NEW	COLUMBUS GA	228.5	APP	BNPDTL	-20090825AXS
25	W61DU	COLUMBUS GA	250.2	APP	BDISDTL	-20090824AKH
25	WDMC-LP	CHARLOTTE NC	418.5	CP	BDFCDTL	-20091218AAC
25	NEW	FLORENCE SC	375.2	APP	BNPDTL	-20090825AZB
26	WGVV-LD	GAINESVILLE FL	227.4	LIC	BLDTL	-20080605AAQ
26	W26DM-D	TALLAHASSEE FL	226.1	CP	BDCCDTL	-20061019ADT
26	NEW	AUGUSTA GA	203.7	APP	BNPDTL	-20090825ADX
26	NEW	MACON GA	149.6	APP	BNPDTL	-20090825BPP
26	NEW	WARNER ROBINS GA	149.6	APP	BNPDTL	-20090825AFK
26	NEW	WOODVILLE GA	193.4	APP	BNPDTL	-20090825BXD
25	WJGV-CD	PALATKA FL	255.4	APP	USERRECORD-01	

Proposal causes no interference

#####

Analysis of Interference to Affected Station 17

Analysis of current record

Channel	Call	City/State	Application	Ref. No.
25	WQIX-LD	VIDALIA GA	BNPTTL	-20000828AEZ

Stations Potentially Affecting This Station

Chan	Call	City/State	Dist(km)	Status	Application	Ref. No.
22	WJCL	SAVANNAH GA	102.5	CP MOD	BMPCDT	-20090918AAU
22	WJCL	SAVANNAH GA	102.4	PLN	DTVPLN	-DTVP0783
24	NEW	ALBANY GA	177.4	APP	BNPDTL	-20090825CAC
24	NEW	AUGUSTA GA	124.4	APP	BNPDTL	-20090825ADD
24	NEW	AUGUSTA GA	123.7	APP	BNPDTL	-20090825BBP
24	NEW	WARNER ROBINS GA	122.9	APP	BNPDTL	-20090825AFP
25	WKNI-LP	ANDALUSIA AL	394.2	CP	BDFCDTL	-20070820AAU
25	NEW	MONTGOMERY AL	358.8	APP	BNPDTL	-20090825BZR
25	NEW	CHIPLEY FL	340.3	APP	BNPDTL	-20090825AWD
25	NEW	GAINESVILLE FL	311.2	APP	BNPDTL	-20090825AOD
25	NEW	ALBANY GA	177.4	APP	BNPDTL	-20090825AHS
25	WATL	ATLANTA GA	252.2	LIC	BLCDT	-20020716AAH
25	WATL	ATLANTA GA	252.2	PLN	DTVPLN	-DTVP0906
25	NEW	AUGUSTA GA	123.7	APP	BNPDTL	-20090825BBN
25	NEW	COLUMBUS GA	224.0	APP	BNPDTL	-20090825AXS
25	W61DU	COLUMBUS GA	241.7	APP	BDISDTL	-20090824AKH
25	W25CQ	STATESBORO GA	69.3	LIC	BLTT	-19990603JE
25	WUNF-TV	ASHEVILLE NC	358.2	PLN	DTVPLN	-DTVP0915
25	WUNF-TV	ASHEVILLE NC	358.2	CP	BPEDT	-20080619AEH
25	WUNF-TV	ASHEVILLE NC	358.2	LIC	BLDT	-20030401BAI
25	WDMC-LP	CHARLOTTE NC	373.2	CP	BDFCDTL	-20091218AAC
25	NEW	FLORENCE SC	338.4	APP	BNPDTL	-20090825AZB
26	NEW	ATHENS GA	193.3	APP	BNPDTL	-20090825AJL
26	NEW	AUGUSTA GA	155.7	APP	BNPDTL	-20090825ADX
26	NEW	MACON GA	122.8	APP	BNPDTL	-20090825BPP
26	NEW	WARNER ROBINS GA	122.9	APP	BNPDTL	-20090825AFK
26	NEW	WOODVILLE GA	147.1	APP	BNPDTL	-20090825BXD

KESSLER AND GEHMAN ASSOCIATES, INC.

WJGV-CD - PALATKA,FL

Exhibit E5, PAGE 14 of 33

28	WTGS	HARDEEVILLE SC	102.5	CP	BPCDT	-20080718AAH
28	WTGS	HARDEEVILLE SC	102.5	PLN	DTVPLN	-DTVP1038
32	WPGA-TV	PERRY GA	122.8	CP MOD	BMPCDT	-20080619AER
32	WPGA-TV	PERRY GA	122.8	PLN	DTVPLN	-DTVP1169
32	WPGA-TV	PERRY GA	123.1	LIC	BLCDT	-20030717AAA
33	WEBA-TV	ALLENDALE SC	143.8	LIC	BLEDT	-20050915AAY
33	WEBA-TV	ALLENDALE SC	143.8	PLN	DTVPLN	-DTVP1223
39	WSAV-TV	SAVANNAH GA	106.2	LIC	BLCDT	-20050705AAP
39	WSAV-TV	SAVANNAH GA	106.2	PLN	DTVPLN	-DTVP1392
40	WMGT-TV	MACON GA	123.4	LIC	BLCDT	-20070112AHJ
40	WMGT-TV	MACON GA	123.4	PLN	DTVPLN	-DTVP1427
25	WJGV-CD	PALATKA FL	300.7	APP	USERRECORD-01	

Proposal causes no interference

#####

Analysis of Interference to Affected Station 18

Analysis of current record

Channel	Call	City/State	Application	Ref. No.
26	WXAX-LP	CLEARWATER FL	BPTTA	-20080804ACE

Stations Potentially Affecting This Station

Chan	Call	City/State	Dist(km)	Status	Application	Ref. No.
19	WMOR-TV	LAKELAND FL	3.1	LIC	BLCDT	-20050726ABO
19	WMOR-TV	LAKELAND FL	3.1	PLN	DTVPLN	-DTVP0657
22	WOFL	ORLANDO FL	142.7	CP	BPCDT	-20080618ADS
22	WOFL	ORLANDO FL	142.7	PLN	DTVPLN	-DTVP0782
22	WOFL	ORLANDO FL	142.7	LIC	BLCDT	-20000706AEZ
23	WMFE-TV	ORLANDO FL	142.0	CP MOD	BMPEDT	-20010615BEG
23	WMFE-TV	ORLANDO FL	142.0	PLN	DTVPLN	-DTVP0825
24	WWSB	SARASOTA FL	33.8	CP	BPCDT	-20080212AAB
24	WWSB	SARASOTA FL	33.8	PLN	DTVPLN	-DTVP0863
25	NEW	GAINESVILLE FL	176.8	APP	BNPDTL	-20090825AOD
25	WVEA-TV	VENICE FL	3.1	LIC	BLCDT	-20060627ABX
25	WVEA-TV	VENICE FL	3.1	PLN	DTVPLN	-DTVP0905
26	WGVN-LD	GAINESVILLE FL	210.7	LIC	BLDTL	-20080605AAQ
26	W26DP-D	INVERNESS FL	116.4	LIC	BLDTL	-20100122AAL
26	WKMG-TV	ORLANDO FL	145.2	CP MOD	BMPCDT	-20080620AJM
26	WKMG-TV	ORLANDO FL	145.2	PLN	DTVPLN	-DTVP0937
26	W26DM-D	TALLAHASSEE FL	353.3	CP	BDCCDTL	-20061019ADT
27	W27CZ-D	FORT MYERS FL	126.7	CP	BDCCDTL	-20061013AAD
27	NEW	GAINESVILLE FL	176.8	APP	BNPDTL	-20090825ANY
27	WTAM-LD	TAMPA FL	3.1	CP	BDCCDTL	-20070425AFK
29	WFTS-TV	TAMPA FL	0.6	LIC	BLCDT	-20020319AAG
29	WFTS-TV	TAMPA FL	0.6	PLN	DTVPLN	-DTVP1052
29	WFTS-TV	TAMPA FL	0.6	CP MOD	BMPCDT	-20090224AAG
30	WBCC	COCOA FL	145.2	LIC	BLEDT	-20030429ABH
30	WBCC	COCOA FL	145.2	PLN	DTVPLN	-DTVP1091
33	WDSC-TV	NEW SMYRNA BEACH FL	145.2	LIC	BLEDT	-20050121AKU
33	WCEU	NEW SMYRNA BEACH FL	145.2	PLN	DTVPLN	-DTVP1207
33	WRXY-TV	TICE FL	126.8	LIC	BLCDT	-20060627ABA
33	WRXY-TV	TICE FL	126.8	PLN	DTVPLN	-DTVP1208
33	WRXY-TV	TICE FL	126.7	CP	BPCDT	-20080619ADR
34	WUSF-TV	TAMPA FL	0.1	LIC	BLEDT	-20060913ABQ
34	WUSF-TV	TAMPA FL	0.1	PLN	DTVPLN	-DTVP1242
40	WACX	LEESBURG FL	141.9	LIC	BLCDT	-20060117ACC
40	WACX	LEESBURG FL	141.9	PLN	DTVPLN	-DTVP1425
41	WZVN-TV	NAPLES FL	124.1	LIC	BLCDT	-20030619AAM
41	WZVN-TV	NAPLES FL	124.1	PLN	DTVPLN	-DTVP1458
41	WRBW	ORLANDO FL	145.2	LIC	BLCDT	-20060810AIX
41	WRBW	ORLANDO FL	145.2	PLN	DTVPLN	-DTVP1459
25	WJGV-CD	PALATKA FL	200.3	APP	USERRECORD-01	

Proposed station is beyond the site to nearest cell evaluation distance

KESSLER AND GEHMAN ASSOCIATES, INC.

WJGV-CD - PALATKA,FL

Exhibit E5, PAGE 15 of 33

#####

Analysis of Interference to Affected Station 19

Analysis of current record

Channel	Call	City/State	Application	Ref. No.
26	WGV-T-LD	GAINESVILLE FL	BLDTL	-20080605AAQ

Stations Potentially Affecting This Station

Chan	Call	City/State	Dist(km)	Status	Application	Ref. No.
25	NEW	GAINESVILLE FL	39.1	APP	BNPDTL	-20090825AOD
25	WQIX-LD	VIDALIA GA	227.4	CP	BDFCDTL	-20080903ABP
26	W26DP-D	INVERNESS FL	94.5	LIC	BLDTT	-20100122AAL
26	WKMG-TV	ORLANDO FL	179.8	CP MOD	BMPCDT	-20080620AJM
26	WKMG-TV	ORLANDO FL	179.8	PLN	DTVPLN	-DTVP0937
26	W26DM-D	TALLAHASSEE FL	200.8	CP	BDCCDTL	-20061019ADT
26	NEW	MACON GA	352.8	APP	BNPDTL	-20090825BPP
26	NEW	WARNER ROBINS GA	352.7	APP	BNPDTL	-20090825AFK
26	NEW	WOODVILLE GA	420.0	APP	BNPDTL	-20090825BXD
26	W26CF	SUMMERVILLE SC	422.8	CP	BDFCDTT	-20060403AOI
27	NEW	GAINESVILLE FL	39.1	APP	BNPDTL	-20090825ANY
27	WWRJ-LP	JACKSONVILLE FL	98.9	CP	BDFCDTL	-20091020AAX
27	WTAM-LD	TAMPA FL	213.8	CP	BDCCDTL	-20070425AFK
25	WJGV-CD	PALATKA FL	68.6	APP	USERRECORD-01	

Proposal causes no interference

#####

Analysis of Interference to Affected Station 20

Analysis of current record

Channel	Call	City/State	Application	Ref. No.
26	W26DP-D	INVERNESS FL	BLDTT	-20100122AAL

Stations Potentially Affecting This Station

Chan	Call	City/State	Dist(km)	Status	Application	Ref. No.
25	NEW	GAINESVILLE FL	61.0	APP	BNPDTL	-20090825AOD
25	WVEA-TV	VENICE FL	119.5	LIC	BLCDT	-20060627ABX
25	WVEA-TV	VENICE FL	119.5	PLN	DTVPLN	-DTVP0905
26	WXAX-LP	CLEARWATER FL	116.4	APP	BPTTA	-20080804ACE
26	WGV-T-LD	GAINESVILLE FL	94.5	LIC	BLDTL	-20080605AAQ
26	WKMG-TV	ORLANDO FL	132.7	CP MOD	BMPCDT	-20080620AJM
26	WKMG-TV	ORLANDO FL	132.7	PLN	DTVPLN	-DTVP0937
26	W26DM-D	TALLAHASSEE FL	255.8	CP	BDCCDTL	-20061019ADT
26	WXAX-LP	TAMPA FL	116.3	LIC	BLTTA	-20040729AEH
27	NEW	GAINESVILLE FL	61.0	APP	BNPDTL	-20090825ANY
27	WWRJ-LP	JACKSONVILLE FL	173.5	CP	BDFCDTL	-20091020AAX
27	WTAM-LD	TAMPA FL	119.5	CP	BDCCDTL	-20070425AFK
25	WJGV-CD	PALATKA FL	101.5	APP	USERRECORD-01	

Proposal causes no interference

#####

Analysis of Interference to Affected Station 21

Analysis of current record

Channel	Call	City/State	Application	Ref. No.
26	WGV-T-LD	LIVE OAK FL	BPTTL	-20070905ABC

Stations Potentially Affecting This Station

KESSLER AND GEHMAN ASSOCIATES, INC.

WJGV-CD - PALATKA,FL

Exhibit E5, PAGE 16 of 33

Chan	Call	City/State	Dist(km)	Status	Application	Ref. No.
19	WTEV-TV	JACKSONVILLE FL	143.6	LIC	BLCDT	-20030328ANV
19	WTEV-TV	JACKSONVILLE FL	143.6	PLN	DTVPLN	-DTVP0656
24	WTLF	TALLAHASSEE FL	143.6	LIC	BLCDT	-20030303ABF
24	WTLF	TALLAHASSEE FL	143.6	PLN	DTVPLN	-DTVP0864
24	WTLF	TALLAHASSEE FL	143.6	CP	BPCDT	-20040514ACK
25	NEW	GAINESVILLE FL	80.7	APP	BNPDTL	-20090825AOD
25	NEW	ALBANY GA	206.7	APP	BNPDTL	-20090825AHS
25	WQIX-LD	VIDALIA GA	204.8	CP	BDFCDTL	-20080903ABP
26	NEW	MONTGOMERY AL	403.7	APP	BNPDTL	-20091026ABD
26	W26DP-D	INVERNESS FL	139.6	LIC	BLDTT	-20100122AAL
26	WKMG-TV	ORLANDO FL	246.5	CP MOD	BMPCDT	-20080620AJM
26	WKMG-TV	ORLANDO FL	246.5	PLN	DTVPLN	-DTVP0937
26	W26DM-D	TALLAHASSEE FL	131.7	CP	BDCCDTL	-20061019ADT
26	NEW	AUGUSTA GA	406.3	APP	BNPDTL	-20090825ADX
26	NEW	LA GRANGE GA	378.3	APP	BNPDTL	-20090825ASI
26	NEW	MACON GA	308.6	APP	BNPDTL	-20090825BPP
26	NEW	WARNER ROBINS GA	308.5	APP	BNPDTL	-20090825AFK
26	NEW	WOODVILLE GA	389.0	APP	BNPDTL	-20090825BXD
27	NEW	GAINESVILLE FL	80.7	APP	BNPDTL	-20090825ANY
27	WWRJ-LP	JACKSONVILLE FL	143.6	CP	BDFCDTL	-20091020AAX
27	WTXL-TV	TALLAHASSEE FL	115.9	CP MOD	BMPCDT	-20080609AAL
27	WTXL-TV	TALLAHASSEE FL	115.9	PLN	DTVPLN	-DTVP0978
28	WGFL	HIGH SPRINGS FL	61.2	LIC	BLCDT	-20060714ABC
28	WGFL	HIGH SPRINGS FL	61.2	PLN	DTVPLN	-DTVP1017
34	WCWJ	JACKSONVILLE FL	144.1	LIC	BLCDT	-20060630AFM
34	WCWJ	JACKSONVILLE FL	144.1	PLN	DTVPLN	-DTVP1240
40	WTWC-TV	TALLAHASSEE FL	117.0	CP MOD	BMPCDT	-20100128AEA
40	WTWC-TV	TALLAHASSEE FL	117.0	PLN	DTVPLN	-DTVP1426
41	WPXJ-LP	JACKSONVILLE FL	136.4	CP	BDFCDTL	-20090515ABQ
41	WWWF-LD	TALLAHASSEE FL	131.7	CP	BDCCDTL	-20061030AMF
25	WJGV-CD	PALATKA FL	137.1	APP	USERRECORD-01	

Proposal causes no interference

#####

Analysis of Interference to Affected Station 22

Analysis of current record

Channel	Call	City/State	Application	Ref. No.
26	W26BN	MELBOURNE FL	BLTTL	-19980123JB

Stations Potentially Affecting This Station

Chan	Call	City/State	Dist(km)	Status	Application	Ref. No.
22	WOFL	ORLANDO FL	64.0	CP	BPCDT	-20080618ADS
22	WOFL	ORLANDO FL	64.0	PLN	DTVPLN	-DTVP0782
22	WOFL	ORLANDO FL	64.0	LIC	BLCDT	-20000706AEZ
23	WMFE-TV	ORLANDO FL	64.3	CP MOD	BMPEDT	-20010615BEG
23	WMFE-TV	ORLANDO FL	64.3	PLN	DTVPLN	-DTVP0825
25	WBWP-LP	WEST PALM BEACH FL	161.0	CP	BDISDTL	-20081216BJG
25	WBWP-LP	WEST PALM BEACH FL	161.0	APP	BMPDTL	-20100209ABH
26	WXAX-LP	CLEARWATER FL	156.5	APP	BPTTA	-20080804ACE
26	WGVN-LD	GAINESVILLE FL	241.9	LIC	BLDTL	-20080605AAQ
26	W26DP-D	INVERNESS FL	184.1	LIC	BLDTT	-20100122AAL
26	WKMG-TV	ORLANDO FL	63.0	CP MOD	BMPCDT	-20080620AJM
26	WKMG-TV	ORLANDO FL	63.0	PLN	DTVPLN	-DTVP0937
27	W27CZ-D	FORT MYERS FL	184.9	CP	BDCCDTL	-20061013AAD
27	WRDQ	ORLANDO FL	59.0	CP MOD	BMPCDT	-20080619AGB
27	WRDQ	ORLANDO FL	59.0	PLN	DTVPLN	-DTVP0977
27	WTAM-LD	TAMPA FL	156.9	CP	BDCCDTL	-20070425AFK
30	WBCC	COCOA FL	63.0	LIC	BLEDT	-20030429ABH
30	WBCC	COCOA FL	63.0	PLN	DTVPLN	-DTVP1091
33	WDSC-TV	NEW SMYRNA BEACH FL	63.0	LIC	BLEDT	-20050121AKU
33	WCEU	NEW SMYRNA BEACH FL	63.0	PLN	DTVPLN	-DTVP1207
34	WTVX	FORT PIERCE FL	117.0	CP MOD	BMPCDT	-20080612ACN

KESSLER AND GEHMAN ASSOCIATES, INC.

WJGV-CD - PALATKA,FL

Exhibit E5, PAGE 17 of 33

34	WTVX	FORT PIERCE FL	117.0	PLN	DTVPLN	-DTVP1239
34	WTVX	FORT PIERCE FL	117.0	CP	BPCDT	-20080325AHT
40	WACX	LEESBURG FL	62.2	LIC	BLCDT	-20060117ACC
40	WACX	LEESBURG FL	62.2	PLN	DTVPLN	-DTVP1425
41	WRBW	ORLANDO FL	63.0	LIC	BLCDT	-20060810AIX
41	WRBW	ORLANDO FL	63.0	PLN	DTVPLN	-DTVP1459
41	NEW	WABASSCO FL	50.7	APP	BNPDTL	-20091112AIY
25	WJGV-CD	PALATKA FL	187.4	APP	USERRECORD-01	

Proposed station is beyond the site to
nearest cell evaluation distance

#####

Analysis of Interference to Affected Station 23

Analysis of current record

Channel	Call	City/State	Application	Ref. No.
26	WKMG-TV	ORLANDO FL	BMPCDT	-20080620AJM

Stations Potentially Affecting This Station

Chan	Call	City/State	Dist(km)	Status	Application	Ref. No.
25	WVEA-TV	VENICE FL	146.8	LIC	BLCDT	-20060627ABX
25	WVEA-TV	VENICE FL	146.8	PLN	DTVPLN	-DTVP0905
27	WRDQ	ORLANDO FL	4.6	CP MOD	BMPCDT	-20080619AGB
27	WRDQ	ORLANDO FL	4.6	PLN	DTVPLN	-DTVP0977
25	WJGV-CD	PALATKA FL	124.4	APP	USERRECORD-01	

Total scenarios = 4

Result key: 6

Scenario 1 Affected station 23 WKMG-TV
Before Analysis

Results for: 26A FL ORLANDO BMPCDT 20080620AJM CP

HAAT 516.0 m, ATV ERP 944.0 kW

	POPULATION	AREA (sq km)
within Noise Limited Contour	3005763	36810.2
not affected by terrain losses	3005763	36810.2
lost to NTSC IX	0	0.0
lost to additional IX by ATV	14693	41.6
lost to ATV IX only	14693	41.6
lost to all IX	14693	41.6

Potential Interfering Stations Included in above Scenario 1

25A FL VENICE	BLCDT	20060627ABX	LIC
27A FL ORLANDO	BMPCDT	20080619AGB	CP

After Analysis

Results for: 26A FL ORLANDO BMPCDT 20080620AJM CP

HAAT 516.0 m, ATV ERP 944.0 kW

	POPULATION	AREA (sq km)
within Noise Limited Contour	3005763	36810.2
not affected by terrain losses	3005763	36810.2
lost to NTSC IX	0	0.0
lost to additional IX by ATV	19727	273.5
lost to ATV IX only	19727	273.5
lost to all IX	19727	273.5

Potential Interfering Stations Included in above Scenario 1

25A FL VENICE	BLCDT	20060627ABX	LIC
27A FL ORLANDO	BMPCDT	20080619AGB	CP

KESSLER AND GEHMAN ASSOCIATES, INC.

WJGV-CD - PALATKA,FL

Exhibit E5, PAGE 18 of 33

25A FL PALATKA USERRECORD01 APP

Percent new IX = 0.1683%

Result key: 7
Scenario 2 Affected station 23 WKMG-TV
Before Analysis

Results for: 26A FL ORLANDO BMPCDT 20080620AJM CP
HAAT 516.0 m, ATV ERP 944.0 kW

	POPULATION	AREA (sq km)
within Noise Limited Contour	3005763	36810.2
not affected by terrain losses	3005763	36810.2
lost to NTSC IX	0	0.0
lost to additional IX by ATV	5582	10.9
lost to ATV IX only	5582	10.9
lost to all IX	5582	10.9

Potential Interfering Stations Included in above Scenario 2

25A FL VENICE BLCDT 20060627ABX LIC
27A FL ORLANDO DTVPLN DTVP0977 PLN

After Analysis

Results for: 26A FL ORLANDO BMPCDT 20080620AJM CP
HAAT 516.0 m, ATV ERP 944.0 kW

	POPULATION	AREA (sq km)
within Noise Limited Contour	3005763	36810.2
not affected by terrain losses	3005763	36810.2
lost to NTSC IX	0	0.0
lost to additional IX by ATV	10616	242.8
lost to ATV IX only	10616	242.8
lost to all IX	10616	242.8

Potential Interfering Stations Included in above Scenario 2

25A FL VENICE BLCDT 20060627ABX LIC
27A FL ORLANDO DTVPLN DTVP0977 PLN
25A FL PALATKA USERRECORD01 APP

Percent new IX = 0.1678%

Result key: 8
Scenario 3 Affected station 23 WKMG-TV
Before Analysis

Results for: 26A FL ORLANDO BMPCDT 20080620AJM CP
HAAT 516.0 m, ATV ERP 944.0 kW

	POPULATION	AREA (sq km)
within Noise Limited Contour	3005763	36810.2
not affected by terrain losses	3005763	36810.2
lost to NTSC IX	0	0.0
lost to additional IX by ATV	14693	41.6
lost to ATV IX only	14693	41.6
lost to all IX	14693	41.6

Potential Interfering Stations Included in above Scenario 3

25A FL VENICE DTVPLN DTVP0905 PLN
27A FL ORLANDO BMPCDT 20080619AGB CP

After Analysis

Results for: 26A FL ORLANDO BMPCDT 20080620AJM CP
HAAT 516.0 m, ATV ERP 944.0 kW

	POPULATION	AREA (sq km)
within Noise Limited Contour	3005763	36810.2
not affected by terrain losses	3005763	36810.2

KESSLER AND GEHMAN ASSOCIATES, INC.

WJGV-CD - PALATKA,FL

Exhibit E5, PAGE 19 of 33

lost to NTSC IX	0	0.0
lost to additional IX by ATV	19727	273.5
lost to ATV IX only	19727	273.5
lost to all IX	19727	273.5

Potential Interfering Stations Included in above Scenario 3

25A FL VENICE	DTVPLN	DTVP0905	PLN
27A FL ORLANDO	BMPCDT	20080619AGB	CP
25A FL PALATKA	USERRECORD01		APP

Percent new IX = 0.1683%

Result key: 9
 Scenario 4 Affected station 23 WKMG-TV
 Before Analysis

Results for: 26A FL ORLANDO BMPCDT 20080620AJM CP
 HAAT 516.0 m, ATV ERP 944.0 kW

	POPULATION	AREA (sq km)
within Noise Limited Contour	3005763	36810.2
not affected by terrain losses	3005763	36810.2
lost to NTSC IX	0	0.0
lost to additional IX by ATV	5582	10.9
lost to ATV IX only	5582	10.9
lost to all IX	5582	10.9

Potential Interfering Stations Included in above Scenario 4

25A FL VENICE	DTVPLN	DTVP0905	PLN
27A FL ORLANDO	DTVPLN	DTVP0977	PLN

After Analysis

Results for: 26A FL ORLANDO BMPCDT 20080620AJM CP
 HAAT 516.0 m, ATV ERP 944.0 kW

	POPULATION	AREA (sq km)
within Noise Limited Contour	3005763	36810.2
not affected by terrain losses	3005763	36810.2
lost to NTSC IX	0	0.0
lost to additional IX by ATV	10616	242.8
lost to ATV IX only	10616	242.8
lost to all IX	10616	242.8

Potential Interfering Stations Included in above Scenario 4

25A FL VENICE	DTVPLN	DTVP0905	PLN
27A FL ORLANDO	DTVPLN	DTVP0977	PLN
25A FL PALATKA	USERRECORD01		APP

Percent new IX = 0.1678%

Worst case new IX 0.1683% Scenario 1

#####

Analysis of Interference to Affected Station 24

Analysis of current record

Channel	Call	City/State	Application Ref. No.
26	WKMG-TV	ORLANDO FL	DTVPLN -DTVP0937

Stations Potentially Affecting This Station

Chan	Call	City/State	Dist(km)	Status	Application Ref. No.
25	WVEA-TV	VENICE FL	146.8	LIC	BLCDT -20060627ABX
25	WVEA-TV	VENICE FL	146.8	PLN	DTVPLN -DTVP0905

KESSLER AND GEHMAN ASSOCIATES, INC.

WJGV-CD - PALATKA,FL

Exhibit E5, PAGE 20 of 33

27	WRDQ	ORLANDO FL	4.6	CP MOD	BMPCDT	-20080619AGB
27	WRDQ	ORLANDO FL	4.6	PLN	DTVPLN	-DTVP0977
25	WJGV-CD	PALATKA FL	124.4	APP	USERRECORD-01	

Total scenarios = 2

Result key: 10
 Scenario 1 Affected station 24 WKMG-TV
 Before Analysis

Results for: 26A FL ORLANDO DTVPLN DTVP0937 PLN
 HAAT 516.0 m, ATV ERP 547.0 kW

	POPULATION	AREA (sq km)
within Noise Limited Contour	2964840	35747.7
not affected by terrain losses	2964840	35747.7
lost to NTSC IX	0	0.0
lost to additional IX by ATV	13310	37.7
lost to ATV IX only	13310	37.7
lost to all IX	13310	37.7

Potential Interfering Stations Included in above Scenario 1

27A FL ORLANDO BMPCDT 20080619AGB CP

After Analysis

Results for: 26A FL ORLANDO DTVPLN DTVP0937 PLN
 HAAT 516.0 m, ATV ERP 547.0 kW

	POPULATION	AREA (sq km)
within Noise Limited Contour	2964840	35747.7
not affected by terrain losses	2964840	35747.7
lost to NTSC IX	0	0.0
lost to additional IX by ATV	17705	214.0
lost to ATV IX only	17705	214.0
lost to all IX	17705	214.0

Potential Interfering Stations Included in above Scenario 1

27A FL ORLANDO BMPCDT 20080619AGB CP
 25A FL PALATKA USERRECORD01 APP

Percent new IX = 0.1489%

Result key: 11
 Scenario 2 Affected station 24 WKMG-TV
 Before Analysis

Results for: 26A FL ORLANDO DTVPLN DTVP0937 PLN
 HAAT 516.0 m, ATV ERP 547.0 kW

	POPULATION	AREA (sq km)
within Noise Limited Contour	2964840	35747.7
not affected by terrain losses	2964840	35747.7
lost to NTSC IX	0	0.0
lost to additional IX by ATV	5951	12.9
lost to ATV IX only	5951	12.9
lost to all IX	5951	12.9

Potential Interfering Stations Included in above Scenario 2

27A FL ORLANDO DTVPLN DTVP0977 PLN

After Analysis

Results for: 26A FL ORLANDO DTVPLN DTVP0937 PLN
 HAAT 516.0 m, ATV ERP 547.0 kW

	POPULATION	AREA (sq km)
within Noise Limited Contour	2964840	35747.7
not affected by terrain losses	2964840	35747.7

KESSLER AND GEHMAN ASSOCIATES, INC.

WJGV-CD - PALATKA,FL

Exhibit E5, PAGE 21 of 33

lost to NTSC IX	0	0.0
lost to additional IX by ATV	10346	189.3
lost to ATV IX only	10346	189.3
lost to all IX	10346	189.3

Potential Interfering Stations Included in above Scenario 2

27A FL ORLANDO	DTVPLN	DTVP0977	PLN
25A FL PALATKA	USERRECORD01		APP

Percent new IX = 0.1485%

Worst case new IX 0.1489% Scenario 1

#####

Analysis of Interference to Affected Station 25

Analysis of current record

Channel	Call	City/State	Application	Ref. No.
26	WXAX-LP	TAMPA FL	BLTTA	-20040729AEH

Stations Potentially Affecting This Station

Chan	Call	City/State	Dist(km)	Status	Application	Ref. No.
19	WMOR-TV	LAKELAND FL	3.2	LIC	BLCDDT	-20050726ABO
19	WMOR-TV	LAKELAND FL	3.2	PLN	DTVPLN	-DTVP0657
22	WOFL	ORLANDO FL	142.6	CP	BPCDDT	-20080618ADS
22	WOFL	ORLANDO FL	142.6	PLN	DTVPLN	-DTVP0782
22	WOFL	ORLANDO FL	142.6	LIC	BLCDDT	-20000706AEZ
23	WMFE-TV	ORLANDO FL	142.0	CP MOD	BMPEDT	-20010615BEG
23	WMFE-TV	ORLANDO FL	142.0	PLN	DTVPLN	-DTVP0825
24	WWSB	SARASOTA FL	33.9	CP	BPCDDT	-20080212AAB
24	WWSB	SARASOTA FL	33.9	PLN	DTVPLN	-DTVP0863
25	NEW	GAINESVILLE FL	176.7	APP	BNPDDL	-20090825AOD
25	WVEA-TV	VENICE FL	3.2	LIC	BLCDDT	-20060627ABX
25	WVEA-TV	VENICE FL	3.2	PLN	DTVPLN	-DTVP0905
26	WGVN-LD	GAINESVILLE FL	210.6	LIC	BLDDL	-20080605AAQ
26	W26DP-D	INVERNESS FL	116.3	LIC	BLDDL	-20100122AAL
26	WKMG-TV	ORLANDO FL	145.1	CP MOD	BMPDDL	-20080620AJM
26	WKMG-TV	ORLANDO FL	145.1	PLN	DTVPLN	-DTVP0937
26	W26DM-D	TALLAHASSEE FL	353.3	CP	BDCCDDL	-20061019ADT
27	W27CZ-D	FORT MYERS FL	126.8	CP	BDCCDDL	-20061013AAD
27	NEW	GAINESVILLE FL	176.7	APP	BNPDDL	-20090825ANY
27	WTAM-LD	TAMPA FL	3.2	CP	BDCCDDL	-20070425AFK
29	WFTS-TV	TAMPA FL	0.6	LIC	BLCDDT	-20020319AAG
29	WFTS-TV	TAMPA FL	0.6	PLN	DTVPLN	-DTVP1052
29	WFTS-TV	TAMPA FL	0.6	CP MOD	BMPDDL	-20090224AAG
30	WBCC	COCOA FL	145.1	LIC	BLEDDT	-20030429ABH
30	WBCC	COCOA FL	145.1	PLN	DTVPLN	-DTVP1091
33	WDSC-TV	NEW SMYRNA BEACH FL	145.1	LIC	BLEDDT	-20050121AKU
33	WCEU	NEW SMYRNA BEACH FL	145.1	PLN	DTVPLN	-DTVP1207
33	WRXY-TV	TICE FL	126.8	LIC	BLCDDT	-20060627ABA
33	WRXY-TV	TICE FL	126.8	PLN	DTVPLN	-DTVP1208
33	WRXY-TV	TICE FL	126.8	CP	BPCDDT	-20080619ADR
34	WUSF-TV	TAMPA FL	0.0	LIC	BLEDDT	-20060913ABQ
34	WUSF-TV	TAMPA FL	0.0	PLN	DTVPLN	-DTVP1242
40	WACX	LEESBURG FL	141.8	LIC	BLCDDT	-20060117ACC
40	WACX	LEESBURG FL	141.8	PLN	DTVPLN	-DTVP1425
41	WZVN-TV	NAPLES FL	124.1	LIC	BLCDDT	-20030619AAM
41	WZVN-TV	NAPLES FL	124.1	PLN	DTVPLN	-DTVP1458
41	WRBW	ORLANDO FL	145.1	LIC	BLCDDT	-20060810AIX
41	WRBW	ORLANDO FL	145.1	PLN	DTVPLN	-DTVP1459
25	WJGV-CD	PALATKA FL	200.2	APP	USERRECORD-01	

Proposed station is beyond the site to nearest cell evaluation distance

KESSLER AND GEHMAN ASSOCIATES, INC.

WJGV-CD - PALATKA,FL

Exhibit E5, PAGE 22 of 33

#####

Analysis of Interference to Affected Station 26

Analysis of current record

Channel	Call	City/State	Application Ref. No.
27	WOCD-LP	DUNNELLO FL	BLTTL -20090331AEX

Stations Potentially Affecting This Station

Chan	Call	City/State	Dist(km)	Status	Application Ref. No.
26	WGVV-LD	GAINESVILLE FL	75.3	LIC	BLDTL -20080605AAQ
26	W26DP-D	INVERNESS FL	33.7	LIC	BLDTT -20100122AAL
27	W27CZ-D	FORT MYERS FL	269.8	CP	BDCCDTL -20061013AAD
27	W08DM	GAINESVILLE FL	77.2	APP	BPTTL -20021003ABC
27	NEW	GAINESVILLE FL	36.6	APP	BNPDTL -20090825ANY
27	WWRJ-LP	JACKSONVILLE FL	167.0	CP	BDFCDTL -20091020AAX
27	WRDQ	ORLANDO FL	164.7	CP MOD	BMPCDT -20080619AGB
27	WRDQ	ORLANDO FL	164.7	PLN	DTVPLN -DTVP0977
27	WTVL-TV	TALLAHASSEE FL	216.8	CP MOD	BMPCDT -20080609AAL
27	WTVL-TV	TALLAHASSEE FL	216.8	PLN	DTVPLN -DTVP0978
27	WTAM-LD	TAMPA FL	146.7	CP	BDCCDTL -20070425AFK
27	WXEL-TV	WEST PALM BEACH FL	365.8	LIC	BLEDT -20040713AAJ
27	WXEL-TV	WEST PALM BEACH FL	365.8	PLN	DTVPLN -DTVP0979
28	WGFL	HIGH SPRINGS FL	59.5	LIC	BLCDDT -20060714ABC
28	WGFL	HIGH SPRINGS FL	59.5	PLN	DTVPLN -DTVP1017
28	WOTO-LP	ORLANDO FL	162.3	CP	BDISDTL -20080507ACB
28	WZZZ-LD	ORLANDO, ETC. FL	162.3	CP	BDCCDTL -20080919AFK
28	WTAM-LD	TAMPA FL	146.7	CP	BDISDTL -20090626AAR
29	WFTS-TV	TAMPA FL	144.2	LIC	BLCDDT -20020319AAG
29	WFTS-TV	TAMPA FL	144.2	PLN	DTVPLN -DTVP1052
29	WFTS-TV	TAMPA FL	144.2	CP MOD	BMPCDT -20090224AAG
31	WOGX	OCALA FL	41.6	LIC	BLCDDT -20020730ABS
31	WOGX	OCALA FL	41.6	PLN	DTVPLN -DTVP1125
34	WUSF-TV	TAMPA FL	143.6	LIC	BLEDT -20060913ABQ
34	WUSF-TV	TAMPA FL	143.6	PLN	DTVPLN -DTVP1242
42	W29AB	OCALA FL	47.3	CP	BDISTT -20070103AEI
42	W29AB	OCALA FL	47.3	CP	BDFCDTT -20090904ACD
42	WHDO-LD	ORLANDO FL	136.4	APP	BSTA -20090427ABM
25	WJGV-CD	PALATKA FL	105.3	APP	USERRECORD-01

Proposed station is beyond the site to
nearest cell evaluation distance

#####

Analysis of Interference to Affected Station 27

Analysis of current record

Channel	Call	City/State	Application Ref. No.
27	W08DM	GAINESVILLE FL	BPTTL -20021003ABC

Stations Potentially Affecting This Station

Chan	Call	City/State	Dist(km)	Status	Application Ref. No.
19	WTEV-TV	JACKSONVILLE FL	90.8	LIC	BLCDDT -20030328ANV
19	WTEV-TV	JACKSONVILLE FL	90.8	PLN	DTVPLN -DTVP0656
23	WMFE-TV	ORLANDO FL	145.2	CP MOD	BMPCDT -20010615BEG
23	WMFE-TV	ORLANDO FL	145.2	PLN	DTVPLN -DTVP0825
24	WPXC-TV	BRUNSWICK GA	141.2	LIC	BLCDDT -20060607ABQ
24	WPXC-TV	BRUNSWICK GA	141.2	PLN	DTVPLN -DTVP0865
24	WPXC-TV	BRUNSWICK GA	141.2	CP	BPCDDT -20080619AFQ
26	WGVV-LD	GAINESVILLE FL	34.6	LIC	BLDTL -20080605AAQ
26	W26DP-D	INVERNESS FL	83.5	LIC	BLDTT -20100122AAL

KESSLER AND GEHMAN ASSOCIATES, INC.

WJGV-CD - PALATKA,FL

Exhibit E5, PAGE 23 of 33

27	W OCD-LP	DUNNELLON FL	77.2	LIC	BLTTL	-20090331AEX
27	W27CZ-D	FORT MYERS FL	312.8	CP	BDCCDTL	-20061013AAD
27	NEW	GAINESVILLE FL	49.9	APP	BNPDTL	-20090825ANY
27	WWRJ-LP	JACKSONVILLE FL	90.8	CP	BDFCDTL	-20091020AAX
27	WWRJ-LP	JACKSONVILLE FL	90.8	CP	BPTTL	-20060403AOM
27	WRDQ	ORLANDO FL	150.5	CP MOD	BMPCDT	-20080619AGB
27	WRDQ	ORLANDO FL	150.5	PLN	DTVPLN	-DTVP0977
27	W TXL-TV	TALLAHASSEE FL	218.3	CP MOD	BMPCDT	-20080609AAL
27	W TXL-TV	TALLAHASSEE FL	218.3	PLN	DTVPLN	-DTVP0978
27	WTAM-LD	TAMPA FL	197.6	CP	BDCCDTL	-20070425AFK
27	WXEL-TV	WEST PALM BEACH FL	379.9	LIC	BLDT	-20040713AAJ
27	WXEL-TV	WEST PALM BEACH FL	379.9	PLN	DTVPLN	-DTVP0979
27	NEW	COLUMBUS GA	399.1	APP	BNPDTL	-20090825BYF
28	WGFL	HIGH SPRINGS FL	48.6	LIC	BLCDT	-20060714ABC
28	WGFL	HIGH SPRINGS FL	48.6	PLN	DTVPLN	-DTVP1017
28	W D TO-LP	ORLANDO FL	148.1	CP	BDISDTL	-20080507ACB
28	W X XZ-LD	ORLANDO, ETC. FL	148.1	CP	BDCCDTL	-20080919AFK
28	WTAM-LD	TAMPA FL	197.6	CP	BDISDTL	-20090626AAR
31	WOGX	OCALA FL	35.6	LIC	BLCDT	-20020730ABS
31	WOGX	OCALA FL	35.6	PLN	DTVPLN	-DTVP1125
34	WCWJ	JACKSONVILLE FL	90.8	LIC	BLCDT	-20060630AFM
34	WCWJ	JACKSONVILLE FL	90.8	PLN	DTVPLN	-DTVP1240
42	WJXT	JACKSONVILLE FL	91.0	LIC	BLCDT	-20020405AAX
42	WJXT	JACKSONVILLE FL	91.0	PLN	DTVPLN	-DTVP1491
42	W29AB	OCALA FL	37.3	CP	BDISTT	-20070103AEI
42	W29AB	OCALA FL	37.3	CP	BDFCDTT	-20090904ACD
25	WJGV-CD	PALATKA FL	36.1	APP	USERRECORD-01	

Proposal causes no interference

#####

Analysis of Interference to Affected Station 28

Analysis of current record

Channel	Call	City/State	Application Ref. No.
27	WWRJ-LP	JACKSONVILLE FL	BPTTL -20060403AOM

Stations Potentially Affecting This Station

Chan	Call	City/State	Dist(km)	Status	Application Ref. No.
19	WTEV-TV	JACKSONVILLE FL	0.0	LIC	BLCDT -20030328ANV
19	WTEV-TV	JACKSONVILLE FL	0.0	PLN	DTVPLN -DTVP0656
24	WPXC-TV	BRUNSWICK GA	62.9	LIC	BLCDT -20060607ABQ
24	WPXC-TV	BRUNSWICK GA	62.9	PLN	DTVPLN -DTVP0865
24	WPXC-TV	BRUNSWICK GA	62.9	CP	BPCTD -20080619AFQ
26	WGVTV-LD	GAINESVILLE FL	98.9	LIC	BLDTL -20080605AAQ
26	W26DP-D	INVERNESS FL	173.5	LIC	BLDTT -20100122AAL
27	W27CZ-D	FORT MYERS FL	389.1	CP	BDCCDTL -20061013AAD
27	W08DM	GAINESVILLE FL	90.8	APP	BPTTL -20021003ABC
27	NEW	GAINESVILLE FL	134.6	APP	BNPDTL -20090825ANY
27	WRDQ	ORLANDO FL	196.7	CP MOD	BMPCDT -20080619AGB
27	WRDQ	ORLANDO FL	196.7	PLN	DTVPLN -DTVP0977
27	W TXL-TV	TALLAHASSEE FL	233.9	CP MOD	BMPCDT -20080609AAL
27	W TXL-TV	TALLAHASSEE FL	233.9	PLN	DTVPLN -DTVP0978
27	WTAM-LD	TAMPA FL	281.7	CP	BDCCDTL -20070425AFK
27	NEW	AUGUSTA GA	376.7	APP	BNPDTL -20090825BBM
27	NEW	AUGUSTA GA	342.0	APP	BNPDTL -20090825ACT
27	NEW	COLUMBUS GA	380.8	APP	BNPDTL -20090825BYF
28	WGFL	HIGH SPRINGS FL	120.7	LIC	BLCDT -20060714ABC
28	WGFL	HIGH SPRINGS FL	120.7	PLN	DTVPLN -DTVP1017
28	W D TO-LP	ORLANDO FL	194.9	CP	BDISDTL -20080507ACB
28	W X XZ-LD	ORLANDO, ETC. FL	194.9	CP	BDCCDTL -20080919AFK
28	WQXT-CA	ST. AUGUSTINE FL	45.6	CP	BDISTTA -20070625AAL
31	WOGX	OCALA FL	125.9	LIC	BLCDT -20020730ABS
31	WOGX	OCALA FL	125.9	PLN	DTVPLN -DTVP1125
34	WCWJ	JACKSONVILLE FL	0.8	LIC	BLCDT -20060630AFM
34	WCWJ	JACKSONVILLE FL	0.8	PLN	DTVPLN -DTVP1240

KESSLER AND GEHMAN ASSOCIATES, INC.

WJGV-CD - PALATKA,FL

Exhibit E5, PAGE 24 of 33

42	WJXT	JACKSONVILLE FL	1.8	LIC	BLCDDT	-20020405AAX
42	WJXT	JACKSONVILLE FL	1.8	PLN	DTVPLN	-DTVP1491
42	W29AB	OCALA FL	127.3	CP	BDFCDTT	-20090904ACD
25	WJGV-CD	PALATKA FL	78.9	APP	USERRECORD-01	

Proposed station is beyond the site to
nearest cell evaluation distance

#####

Analysis of Interference to Affected Station 29

Analysis of current record

Channel	Call	City/State	Application	Ref. No.
27	WWRJ-LP	JACKSONVILLE FL	BLTTL	-20011213ABF

Stations Potentially Affecting This Station

Chan	Call	City/State	Dist(km)	Status	Application	Ref. No.
19	WTEV-TV	JACKSONVILLE FL	9.9	LIC	BLCDDT	-20030328ANV
19	WTEV-TV	JACKSONVILLE FL	9.9	PLN	DTVPLN	-DTVP0656
24	WPXC-TV	BRUNSWICK GA	56.3	LIC	BLCDDT	-20060607ABQ
24	WPXC-TV	BRUNSWICK GA	56.3	PLN	DTVPLN	-DTVP0865
24	WPXC-TV	BRUNSWICK GA	56.3	CP	BPCDDT	-20080619AFQ
26	WGVV-LD	GAINESVILLE FL	95.6	LIC	BLDTL	-20080605AAQ
26	W26DP-D	INVERNESS FL	174.4	LIC	BLDTT	-20100122AAL
27	WOCB-LP	DUNNELLON FL	165.9	LIC	BLTTL	-20090331AEX
27	W27CZ-D	FORT MYERS FL	393.7	CP	BDCDDTL	-20061013AAD
27	W08DM	GAINESVILLE FL	91.0	APP	BPTTL	-20021003ABC
27	NEW	GAINESVILLE FL	132.5	APP	BNPDTL	-20090825ANY
27	WRDQ	ORLANDO FL	203.9	CP MOD	BMPCDDT	-20080619AGB
27	WRDQ	ORLANDO FL	203.9	PLN	DTVPLN	-DTVP0977
27	WTXL-TV	TALLAHASSEE FL	224.5	CP MOD	BMPCDDT	-20080609AAL
27	WTXL-TV	TALLAHASSEE FL	224.5	PLN	DTVPLN	-DTVP0978
27	WTAM-LD	TAMPA FL	284.7	CP	BDCDDTL	-20070425AFK
27	NEW	AUGUSTA GA	370.3	APP	BNPDTL	-20090825BBM
27	NEW	AUGUSTA GA	335.7	APP	BNPDTL	-20090825ACT
27	NEW	COLUMBUS GA	371.0	APP	BNPDTL	-20090825BYF
28	WGFL	HIGH SPRINGS FL	117.2	LIC	BLCDDT	-20060714ABC
28	WGFL	HIGH SPRINGS FL	117.2	PLN	DTVPLN	-DTVP1017
28	WDTO-LP	ORLANDO FL	202.0	CP	BDISDTL	-20080507ACB
28	WZZZ-LD	ORLANDO, ETC. FL	202.0	CP	BDCDDTL	-20080919AFK
31	WOGX	OCALA FL	125.4	LIC	BLCDDT	-20020730ABS
31	WOGX	OCALA FL	125.4	PLN	DTVPLN	-DTVP1125
34	WCWJ	JACKSONVILLE FL	10.7	LIC	BLCDDT	-20060630AFM
34	WCWJ	JACKSONVILLE FL	10.7	PLN	DTVPLN	-DTVP1240
42	WJXT	JACKSONVILLE FL	11.7	LIC	BLCDDT	-20020405AAX
42	WJXT	JACKSONVILLE FL	11.7	PLN	DTVPLN	-DTVP1491
42	W29AB	OCALA FL	128.0	CP	BDFCDTT	-20090904ACD
25	WJGV-CD	PALATKA FL	83.0	APP	USERRECORD-01	

Proposed station is beyond the site to
nearest cell evaluation distance

#####

Analysis of Interference to Affected Station 30

Analysis of current record

Channel	Call	City/State	Application	Ref. No.
28	WDYB-LP	DAYTONA BEACH FL	BDISTTA	-20060922ACY

Stations Potentially Affecting This Station

Chan	Call	City/State	Dist(km)	Status	Application	Ref. No.
------	------	------------	----------	--------	-------------	----------

KESSLER AND GEHMAN ASSOCIATES, INC.

WJGV-CD - PALATKA,FL

Exhibit E5, PAGE 25 of 33

26	WKMG-TV	ORLANDO FL	69.3	CP MOD	BMPCDT	-20080620AJM
26	WKMG-TV	ORLANDO FL	69.3	PLN	DTVPLN	-DTVP0937
27	NEW	GAINESVILLE FL	148.0	APP	BNPDTL	-20090825ANY
27	WWRJ-LP	JACKSONVILLE FL	127.4	CP	BDFCDTL	-20091020AAX
27	WRDQ	ORLANDO FL	73.8	CP MOD	BMPCDT	-20080619AGB
27	WRDQ	ORLANDO FL	73.8	PLN	DTVPLN	-DTVP0977
27	WTAM-LD	TAMPA FL	197.3	CP	BDCCDTL	-20070425AFK
28	WGFL	HIGH SPRINGS FL	155.1	LIC	BLCDT	-20060714ABC
28	WGFL	HIGH SPRINGS FL	155.1	PLN	DTVPLN	-DTVP1017
28	WOTO-LP	ORLANDO FL	72.5	CP	BDISDTL	-20080507ACB
28	WXXZ-LD	ORLANDO, ETC. FL	72.5	CP	BDCCDTL	-20080919AFK
28	WQXT-CA	ST. AUGUSTINE FL	81.7	CP	BDISTTA	-20070625AAL
28	NEW	TALLAHASSEE FL	342.8	APP	BNPDTL	-20091210ADL
28	WTAM-LD	TAMPA FL	197.3	CP	BDISDTL	-20090626AAR
28	WFLX	WEST PALM BEACH FL	305.3	LIC	BLCDT	-20020417AAP
28	WFLX	WEST PALM BEACH FL	305.3	PLN	DTVPLN	-DTVP1018
28	WTGS	HARDEEVILLE SC	314.0	CP	BPCDT	-20080718AAH
28	WTGS	HARDEEVILLE SC	314.0	PLN	DTVPLN	-DTVP1038
29	WMVJ-CA	MELBOURNE FL	136.4	CP	BDFCDTA	-20080804AAZ
30	WBCC	COCOA FL	69.3	LIC	BLEDT	-20030429ABH
30	WBCC	COCOA FL	69.3	PLN	DTVPLN	-DTVP1091
31	WOGX	OCALA FL	126.0	LIC	BLCDT	-20020730ABS
31	WOGX	OCALA FL	126.0	PLN	DTVPLN	-DTVP1125
32	WAWS	JACKSONVILLE FL	127.4	LIC	BLCDT	-20030328ANQ
32	WAWS	JACKSONVILLE FL	127.4	PLN	DTVPLN	-DTVP1165
36	WUFT	GAINESVILLE FL	141.6	LIC	BLEDT	-20040304AAF
36	WUFT	GAINESVILLE FL	141.6	PLN	DTVPLN	-DTVP1316
42	WJXT	JACKSONVILLE FL	126.0	LIC	BLCDT	-20020405AAX
42	WJXT	JACKSONVILLE FL	126.0	PLN	DTVPLN	-DTVP1491
43	WOTF-DT	MELBOURNE FL	71.9	CP	BPCDT	-20080613ACG
43	WOTF-TV	MELBOURNE FL	103.7	PLN	DTVPLN	-DTVP1528
25	WJGV-CD	PALATKA FL	74.8	APP	USERRECORD-01	

Proposed station is beyond the site to
nearest cell evaluation distance

#####

Analysis of Interference to Affected Station 31

Analysis of current record

Channel	Call	City/State	Application Ref. No.
28	WQXT-CA	ST. AUGUSTINE FL	BDISTTA -20070625AAL

Stations Potentially Affecting This Station

Chan	Call	City/State	Dist(km)	Status	Application Ref. No.
24	WPXC-TV	BRUNSWICK GA	108.3	LIC	BLCDT -20060607ABQ
24	WPXC-TV	BRUNSWICK GA	108.3	PLN	DTVPLN -DTVP0865
24	WPXC-TV	BRUNSWICK GA	108.3	CP	BPCDT -20080619AFQ
27	NEW	GAINESVILLE FL	125.0	APP	BNPDTL -20090825ANY
27	WWRJ-LP	JACKSONVILLE FL	45.6	CP	BDFCDTL -20091020AAX
27	WWRJ-LP	JACKSONVILLE FL	45.6	CP	BPTTL -20060403AOM
28	WDYB-LP	DAYTONA BEACH FL	81.7	CP	BDISTTA -20060922ACY
28	WGFL	HIGH SPRINGS FL	118.9	LIC	BLCDT -20060714ABC
28	WGFL	HIGH SPRINGS FL	118.9	PLN	DTVPLN -DTVP1017
28	NEW	MARIANNA FL	385.7	APP	BNPDTL -20090825AWP
28	NEW	MARIANNA FL	382.9	APP	BNPDTL -20090825BQV
28	WOTO-LP	ORLANDO FL	150.0	CP	BDISDTL -20080507ACB
28	WXXZ-LD	ORLANDO, ETC. FL	150.0	CP	BDCCDTL -20080919AFK
28	NEW	PANAMA CITY FL	388.6	APP	BNPDTL -20090825BWV
28	NEW	TALLAHASSEE FL	286.3	APP	BNPDTL -20091210ADL
28	WTAM-LD	TAMPA FL	247.0	CP	BDISDTL -20090626AAR
28	WFLX	WEST PALM BEACH FL	386.3	LIC	BLCDT -20020417AAP
28	WFLX	WEST PALM BEACH FL	386.3	PLN	DTVPLN -DTVP1018
28	NEW	MACON GA	378.4	APP	BNPDTL -20090825AWJ
28	NEW	MACON GA	377.9	APP	BNPDTL -20090825BST

KESSLER AND GEHMAN ASSOCIATES, INC.

WJGV-CD - PALATKA,FL

Exhibit E5, PAGE 26 of 33

28	NEW	WARNER ROBINS GA	377.8	APP	BNPDTL	-20090825AFG
28	WTGS	HARDEEVILLE SC	238.1	CP	BPCDT	-20080718AAH
28	WTGS	HARDEEVILLE SC	238.1	PLN	DTVPLN	-DTVP1038
31	WOGX	OCALA FL	109.7	LIC	BLCDT	-20020730ABS
31	WOGX	OCALA FL	109.7	PLN	DTVPLN	-DTVP1125
32	WAWS	JACKSONVILLE FL	45.6	LIC	BLCDT	-20030328ANQ
32	WAWS	JACKSONVILLE FL	45.6	PLN	DTVPLN	-DTVP1165
36	WUFT	GAINESVILLE FL	100.0	LIC	BLEDT	-20040304AAF
36	WUFT	GAINESVILLE FL	100.0	PLN	DTVPLN	-DTVP1316
42	WJXT	JACKSONVILLE FL	44.3	LIC	BLCDT	-20020405AAX
42	WJXT	JACKSONVILLE FL	44.3	PLN	DTVPLN	-DTVP1491
43	WBXJ-CA	JACKSONVILLE FL	45.0	LIC	BLTTA	-20020906AAF
43	WOCN-LD	OCALA FL	135.2	CP	BDCCDTL	-20080919AFE
25	WJGV-CD	PALATKA FL	47.3	APP	USERRECORD-01	

Proposal causes no interference

#####

Analysis of Interference to Affected Station 32

Analysis of current record

Channel	Call	City/State	Application	Ref. No.
29	WTBZ-LP	GAINESVILLE FL	BLTTL	-20050907ABX

Stations Potentially Affecting This Station

Chan	Call	City/State	Dist(km)	Status	Application	Ref. No.
28	WGFL	HIGH SPRINGS FL	23.6	LIC	BLCDT	-20060714ABC
28	WGFL	HIGH SPRINGS FL	23.6	PLN	DTVPLN	-DTVP1017
28	WOTO-LP	ORLANDO FL	170.8	CP	BDISDTL	-20080507ACB
28	WXXZ-LD	ORLANDO, ETC. FL	170.8	CP	BDCCDTL	-20080919AFK
28	NEW	TALLAHASSEE FL	205.4	APP	BNPDTL	-20091210ADL
28	WTAM-LD	TAMPA FL	179.9	CP	BDISDTL	-20090626AAR
29	NEW	DE FUNIACK SPRINGS FL	360.5	APP	BNPDTL	-20090825AUE
29	WMVJ-CA	MELBOURNE FL	237.8	CP	BDFCDTA	-20080804AAZ
29	W29AB	OCALA FL	38.6	LIC	BLTT	-19820713IG
29	NEW	PANAMA CITY FL	314.9	APP	BNPDTL	-20090825BWY
29	NEW	TALLAHASSEE FL	205.4	APP	BNPDTL	-20090825AVU
29	WFTS-TV	TAMPA FL	177.4	LIC	BLCDT	-20020319AAG
29	WFTS-TV	TAMPA FL	177.4	PLN	DTVPLN	-DTVP1052
29	WFTS-TV	TAMPA FL	177.4	CP MOD	BMPCDT	-20090224AAG
29	NEW	COLUMBUS GA	405.5	APP	BNPDTL	-20090825ABG
29	NEW	MACON GA	386.1	APP	BNPDTT	-20090825BMS
29	NEW	WARNER ROBINS GA	382.6	APP	BNPDTL	-20090825AFA
30	NEW	LIVE OAK FL	111.4	APP	BNPDTL	-20090908ABD
30	NEW	TALLAHASSEE FL	205.3	APP	BNPDTL	-20090831ABY
30	NEW	TALLAHASSEE FL	204.3	APP	BNPDTL	-20090825AXO
30	NEW	TALLAHASSEE FL	205.5	APP	BNPDTL	-20090825AAK
30	NEW	TALLHASSEE FL	205.6	APP	BNPDTL	-20090825AJK
30	NEW	VALDOSTA GA	172.4	APP	BNPDTL	-20090825CAI
31	WOGX	OCALA FL	22.3	LIC	BLCDT	-20020730ABS
31	WOGX	OCALA FL	22.3	PLN	DTVPLN	-DTVP1125
32	WAWS	JACKSONVILLE FL	134.6	LIC	BLCDT	-20030328ANQ
32	WAWS	JACKSONVILLE FL	134.6	PLN	DTVPLN	-DTVP1165
36	WUFT	GAINESVILLE FL	35.7	LIC	BLEDT	-20040304AAF
36	WUFT	GAINESVILLE FL	35.7	PLN	DTVPLN	-DTVP1316
44	WJEB-TV	JACKSONVILLE FL	134.6	CP	BPEDT	-20080618ADQ
44	WJEB-TV	JACKSONVILLE FL	134.5	PLN	DTVPLN	-DTVP1565
44	WJEB-TV	JACKSONVILLE FL	134.5	LIC	BLEDT	-20060313AEB
44	NEW	OCALA FL	22.1	APP	BNPDTL	-20090825AMU
25	WJGV-CD	PALATKA FL	84.2	APP	USERRECORD-01	

Proposed station is beyond the site to
nearest cell evaluation distance

#####

KESSLER AND GEHMAN ASSOCIATES, INC.

WJGV-CD - PALATKA,FL

Exhibit E5, PAGE 27 of 33

Analysis of Interference to Affected Station 33

Analysis of current record

Channel	Call	City/State	Application	Ref. No.
29	W29AB	OCALA FL	BLTT	-19820713IG

Stations Potentially Affecting This Station

Chan	Call	City/State	Dist(km)	Status	Application	Ref. No.
22	WOFL	ORLANDO FL	130.3	CP	BPCDT	-20080618ADS
22	WOFL	ORLANDO FL	130.3	PLN	DTVPLN	-DTVP0782
22	WOFL	ORLANDO FL	130.3	LIC	BLCDDT	-20000706AEZ
26	WKMG-TV	ORLANDO FL	132.1	CP MOD	BMPCDT	-20080620AJM
26	WKMG-TV	ORLANDO FL	132.1	PLN	DTVPLN	-DTVP0937
27	WRDQ	ORLANDO FL	135.1	CP MOD	BMPCDT	-20080619AGB
27	WRDQ	ORLANDO FL	135.1	PLN	DTVPLN	-DTVP0977
28	WGFL	HIGH SPRINGS FL	54.6	LIC	BLCDDT	-20060714ABC
28	WGFL	HIGH SPRINGS FL	54.6	PLN	DTVPLN	-DTVP1017
28	WTO-LP	ORLANDO FL	132.6	CP	BDISDTL	-20080507ACB
28	WZZX-LD	ORLANDO, ETC. FL	132.6	CP	BDCCDTL	-20080919AFK
28	WTAM-LD	TAMPA FL	161.4	CP	BDISDTL	-20090626AAR
29	NEW	DE FUNIACK SPRINGS FL	399.1	APP	BNPDTL	-20090825AUE
29	WTBZ-LP	GAINESVILLE FL	38.6	LIC	BLTTL	-20050907ABX
29	WMVJ-CA	MELBOURNE FL	191.9	LIC	BLTTL	-20010711ACI
29	WMVJ-CA	MELBOURNE FL	200.6	CP	BDFCDTA	-20080804AAZ
29	WRCF-LP	ORLANDO FL	113.0	LIC	BLTTL	-20001020AAD
29	NEW	PANAMA CITY FL	353.4	APP	BNPDTL	-20090825BWY
29	NEW	TALLAHASSEE FL	243.4	APP	BNPDTL	-20090825AVU
29	WFTS-TV	TAMPA FL	158.8	LIC	BLCDDT	-20020319AAG
29	WFTS-TV	TAMPA FL	158.8	PLN	DTVPLN	-DTVP1052
29	WFTS-TV	TAMPA FL	158.8	CP MOD	BMPCDT	-20090224AAG
30	WBCC	COCOA FL	132.1	LIC	BLEDT	-20030429ABH
30	WBCC	COCOA FL	132.1	PLN	DTVPLN	-DTVP1091
30	NEW	LIVE OAK FL	142.2	APP	BNPDTL	-20090908ABD
30	NEW	VALDOSTA GA	204.2	APP	BNPDTL	-20090825CAI
31	WOGX	OCALA FL	16.8	LIC	BLCDDT	-20020730ABS
31	WOGX	OCALA FL	16.8	PLN	DTVPLN	-DTVP1125
32	WAWS	JACKSONVILLE FL	127.3	LIC	BLCDDT	-20030328ANQ
32	WAWS	JACKSONVILLE FL	127.3	PLN	DTVPLN	-DTVP1165
33	WDSC-TV	NEW SMYRNA BEACH FL	132.1	LIC	BLEDT	-20050121AKU
33	WCEU	NEW SMYRNA BEACH FL	132.1	PLN	DTVPLN	-DTVP1207
36	WUFT	GAINESVILLE FL	52.8	LIC	BLEDT	-20040304AAF
36	WUFT	GAINESVILLE FL	52.8	PLN	DTVPLN	-DTVP1316
43	WOTF-DT	MELBOURNE FL	131.7	CP	BPCDT	-20080613ACG
44	WJEB-TV	JACKSONVILLE FL	127.1	CP	BPEDT	-20080618ADQ
44	WJEB-TV	JACKSONVILLE FL	127.0	PLN	DTVPLN	-DTVP1565
44	WJEB-TV	JACKSONVILLE FL	127.0	LIC	BLEDT	-20060313AEB
44	NEW	OCALA FL	17.0	APP	BNPDTL	-20090825AMU
25	WJGV-CD	PALATKA FL	58.6	APP	USERRECORD-01	

Proposal causes no interference

#####

Analysis of Interference to Affected Station 34

Analysis of current record

Channel	Call	City/State	Application	Ref. No.
33	W33BL	CHIEFLAND FL	BLTTL	-19960415IC

Stations Potentially Affecting This Station

Chan	Call	City/State	Dist(km)	Status	Application	Ref. No.
31	WOGX	OCALA FL	47.8	LIC	BLCDDT	-20020730ABS
31	WOGX	OCALA FL	47.8	PLN	DTVPLN	-DTVP1125
32	W32DI-D	CHIEFLAND FL	15.9	LIC	BLDTL	-20100108ABL

KESSLER AND GEHMAN ASSOCIATES, INC.

WJGV-CD - PALATKA,FL

Exhibit E5, PAGE 28 of 33

32	WPNG-LD	PEARSON GA	206.4	CP	BDCCDTL	-20061026ADL
33	WDFX-TV	OZARK AL	331.4	LIC	BLCDT	-20050915APH
33	WDFX-TV	OZARK AL	331.4	PLN	DTVPLN	-DTVP1198
33	WDFX-TV	OZARK AL	331.4	CP	BPCDT	-20080620AGU
33	NEW	DESTIN FL	368.4	APP	BNPDTL	-20100104AEQ
33	WBXG-CA	GAINESVILLE FL	41.5	APP	BMPTTA	-20020510AAK
33	WBXG-CA	GAINESVILLE FL	42.0	LIC	BLTTA	-20030911AAZ
33	WUJF-LP	LAKE CITY FL	149.3	APP	BSTA	-20061113AFW
33	NEW	LIVE OAK FL	85.1	APP	BNPDTL	-20090825CAM
33	NEW	MADISON FL	128.1	APP	BNPDTL	-20090825AHE
33	WUJF-LP	MAXVILLE FL	149.3	LIC	BLTTL	-20070119ADT
33	WDSC-TV	NEW SMYRNA BEACH FL	194.7	LIC	BLEDT	-20050121AKU
33	WCEU	NEW SMYRNA BEACH FL	194.7	PLN	DTVPLN	-DTVP1207
33	NEW	PANAMA CITY FL	314.5	APP	BNPDTL	-20091218AFL
33	NEW	TALLAHASSEE FL	182.1	APP	BNPDTL	-20090825ALP
33	WRXY-TV	TICE FL	314.4	LIC	BLCDT	-20060627ABA
33	WRXY-TV	TICE FL	314.4	PLN	DTVPLN	-DTVP1208
33	WRXY-TV	TICE FL	314.3	CP	BPCDT	-20080619ADR
33	NEW	WABASSO FL	299.5	APP	BNPDTL	-20091106AEV
33	NEW	YANKEETOWN FL	51.1	APP	BNPDTL	-20090825ALE
33	NEW	MACON GA	372.0	APP	BNPDTL	-20090825AWC
33	NEW	WARNER ROBINS GA	371.5	APP	BNPDTL	-20090825AET
34	NEW	TALLAHASSEE FL	175.2	APP	BNPDTL	-20090825AMO
34	NEW	TALLAHASSEE FL	180.9	APP	BNPDTL	-20090825AXT
34	NEW	TALLAHASSEE FL	182.3	APP	BNPDTL	-20090825ALF
36	WUFT	GAINESVILLE FL	47.8	LIC	BLEDT	-20040304AAF
36	WUFT	GAINESVILLE FL	47.8	PLN	DTVPLN	-DTVP1316
48	WFXU	LIVE OAK FL	39.1	APP	BPCDT	-20080617ABP
48	WFXU	LIVE OAK FL	121.7	LIC	BLCDT	-20071113ACD
48	WJGV-CD	PALATKA FL	107.6	LIC	BLDTA	-20090930AKO
25	WJGV-CD	PALATKA FL	107.7	APP	USERRECORD-01	

Proposed station is beyond the site to
nearest cell evaluation distance

#####

Analysis of Interference to Affected Station 35

Analysis of current record

Channel	Call	City/State	Application	Ref. No.
33	WBXG-CA	GAINESVILLE FL	BMPTTA	-20020510AAK

Stations Potentially Affecting This Station

Chan	Call	City/State	Dist(km)	Status	Application	Ref. No.
31	WOGX	OCALA FL	31.6	LIC	BLCDT	-20020730ABS
31	WOGX	OCALA FL	31.6	PLN	DTVPLN	-DTVP1125
32	W32DI-D	CHIEFLAND FL	41.8	LIC	BLDTL	-20100108ABL
32	WAWS	JACKSONVILLE FL	109.0	LIC	BLCDT	-20030328ANQ
32	WAWS	JACKSONVILLE FL	109.0	PLN	DTVPLN	-DTVP1165
32	WPNG-LD	PEARSON GA	193.2	CP	BDCCDTL	-20061026ADL
33	WDFX-TV	OZARK AL	352.7	LIC	BLCDT	-20050915APH
33	WDFX-TV	OZARK AL	352.7	PLN	DTVPLN	-DTVP1198
33	WDFX-TV	OZARK AL	352.7	CP	BPCDT	-20080620AGU
33	W33BL	CHIEFLAND FL	41.5	LIC	BLTTL	-19960415IC
33	NEW	DESTIN FL	398.9	APP	BNPDTL	-20100104AEQ
33	WUJF-LP	LAKE CITY FL	109.0	APP	BSTA	-20061113AFW
33	NEW	LIVE OAK FL	85.4	APP	BNPDTL	-20090825CAM
33	NEW	MADISON FL	140.2	APP	BNPDTL	-20090825AHE
33	WUJF-LP	MAXVILLE FL	109.0	LIC	BLTTL	-20070119ADT
33	WDSC-TV	NEW SMYRNA BEACH FL	174.1	LIC	BLEDT	-20050121AKU
33	WCEU	NEW SMYRNA BEACH FL	174.1	PLN	DTVPLN	-DTVP1207
33	NEW	PANAMA CITY FL	345.2	APP	BNPDTL	-20091218AFL
33	NEW	TALLAHASSEE FL	203.3	APP	BNPDTL	-20090825ALP
33	WRXY-TV	TICE FL	322.2	LIC	BLCDT	-20060627ABA
33	WRXY-TV	TICE FL	322.2	PLN	DTVPLN	-DTVP1208

KESSLER AND GEHMAN ASSOCIATES, INC.

WJGV-CD - PALATKA,FL

Exhibit E5, PAGE 29 of 33

33	WRXY-TV	TICE FL	322.2	CP	BPCDT	-20080619ADR
33	NEW	WABASSO FL	284.6	APP	BNPDTL	-20091106AEV
33	NEW	YANKEETOWN FL	72.7	APP	BNPDTL	-20090825ALE
33	NEW	MACON GA	363.6	APP	BNPDTL	-20090825AWC
33	W33BX	TIFTON GA	230.2	LIC	BLTT	-20000627AHH
33	NEW	WARNER ROBINS GA	363.1	APP	BNPDTL	-20090825AET
34	WCWJ	JACKSONVILLE FL	109.2	LIC	BLCDT	-20060630AFM
34	WCWJ	JACKSONVILLE FL	109.2	PLN	DTVPLN	-DTVP1240
34	NEW	TALLAHASSEE FL	189.4	APP	BNPDTL	-20090825AMO
34	NEW	TALLAHASSEE FL	202.8	APP	BNPDTL	-20090825AXT
34	NEW	TALLAHASSEE FL	203.6	APP	BNPDTL	-20090825ALF
34	W56EJ	WILLISTON FL	31.6	CP	BDISTTL	-20071205ABE
36	WUFT	GAINESVILLE FL	8.9	LIC	BLEDT	-20040304AAF
36	WUFT	GAINESVILLE FL	8.9	PLN	DTVPLN	-DTVP1316
48	WFXU	LIVE OAK FL	34.4	APP	BPCDT	-20080617ABP
48	WFXU	LIVE OAK FL	117.0	LIC	BLCDT	-20071113ACD
48	WJGV-CD	PALATKA FL	69.7	LIC	BLDTA	-20090930AKO
48	WJGV-CD	PALATKA FL	69.7	LIC	BLTTL	-20010614ADP
25	WJGV-CD	PALATKA FL	69.8	APP	USERRECORD-01	

Proposed station is beyond the site to
nearest cell evaluation distance

#####

Analysis of Interference to Affected Station 36

Analysis of current record

Channel	Call	City/State	Application	Ref. No.
33	WBXG-CA	GAINESVILLE FL	BLTTA	-20030911AAZ

Stations Potentially Affecting This Station

Chan	Call	City/State	Dist(km)	Status	Application	Ref. No.
31	WOGX	OCALA FL	32.9	LIC	BLCDT	-20020730ABS
31	WOGX	OCALA FL	32.9	PLN	DTVPLN	-DTVP1125
32	W32DI-D	CHIEFLAND FL	41.8	LIC	BLDTL	-20100108ABL
32	WAWS	JACKSONVILLE FL	108.2	LIC	BLCDT	-20030328ANQ
32	WAWS	JACKSONVILLE FL	108.2	PLN	DTVPLN	-DTVP1165
32	WPNG-LD	PEARSON GA	191.9	CP	BDCCDTL	-20061026ADL
33	WDFX-TV	OZARK AL	352.0	LIC	BLCDT	-20050915APH
33	WDFX-TV	OZARK AL	352.0	PLN	DTVPLN	-DTVP1198
33	WDFX-TV	OZARK AL	352.0	CP	BPCDT	-20080620AGU
33	W33BL	CHIEFLAND FL	42.0	LIC	BLTTL	-19960415IC
33	NEW	DESTIN FL	398.5	APP	BNPDTL	-20100104AEQ
33	NEW	LIVE OAK FL	84.3	APP	BNPDTL	-20090825CAM
33	NEW	MADISON FL	139.4	APP	BNPDTL	-20090825AHE
33	WUJF-LP	MAXVILLE FL	108.2	LIC	BLTTL	-20070119ADT
33	WDSC-TV	NEW SMYRNA BEACH FL	175.0	LIC	BLEDT	-20050121AKU
33	WCEU	NEW SMYRNA BEACH FL	175.0	PLN	DTVPLN	-DTVP1207
33	NEW	PANAMA CITY FL	344.8	APP	BNPDTL	-20091218AFL
33	NEW	TALLAHASSEE FL	202.6	APP	BNPDTL	-20090825ALP
33	WRXY-TV	TICE FL	323.5	LIC	BLCDT	-20060627ABA
33	WRXY-TV	TICE FL	323.5	PLN	DTVPLN	-DTVP1208
33	WRXY-TV	TICE FL	323.5	CP	BPCDT	-20080619ADR
33	NEW	WABASSO FL	285.6	APP	BNPDTL	-20091106AEV
33	NEW	YANKEETOWN FL	73.9	APP	BNPDTL	-20090825ALE
33	NEW	MACON GA	362.3	APP	BNPDTL	-20090825AWC
33	NEW	WARNER ROBINS GA	361.8	APP	BNPDTL	-20090825AET
34	WCWJ	JACKSONVILLE FL	108.4	LIC	BLCDT	-20060630AFM
34	WCWJ	JACKSONVILLE FL	108.4	PLN	DTVPLN	-DTVP1240
34	NEW	TALLAHASSEE FL	188.5	APP	BNPDTL	-20090825AMO
34	NEW	TALLAHASSEE FL	202.1	APP	BNPDTL	-20090825AXT
34	NEW	TALLAHASSEE FL	202.9	APP	BNPDTL	-20090825ALF
34	W56EJ	WILLISTON FL	32.9	CP	BDISTTL	-20071205ABE
36	WUFT	GAINESVILLE FL	7.7	LIC	BLEDT	-20040304AAF
36	WUFT	GAINESVILLE FL	7.7	PLN	DTVPLN	-DTVP1316

KESSLER AND GEHMAN ASSOCIATES, INC.

WJGV-CD - PALATKA,FL

Exhibit E5, PAGE 30 of 33

48	WFXU	LIVE OAK FL	33.6	APP	BPCDT	-20080617ABP
48	WFXU	LIVE OAK FL	115.8	LIC	BLCDT	-20071113ACD
48	WJGV-CD	PALATKA FL	69.9	LIC	BLDTA	-20090930AKO
25	WJGV-CD	PALATKA FL	70.0	APP	USERRECORD-01	

Proposed station is beyond the site to
nearest cell evaluation distance

#####

Analysis of Interference to Affected Station 37

Analysis of current record

Channel	Call	City/State	Application Ref. No.
33	WUJF-LP	LAKE CITY FL	BSTA -20061113AFW

Stations Potentially Affecting This Station

Chan	Call	City/State	Dist(km)	Status	Application Ref. No.
31	WOGX	OCALA FL	125.9	LIC	BLCDT -20020730ABS
31	WOGX	OCALA FL	125.9	PLN	DTVPLN -DTVP1125
32	W32DI-D	CHIEFLAND FL	144.2	LIC	BLDTL -20100108ABL
32	WAWS	JACKSONVILLE FL	0.0	LIC	BLCDT -20030328ANQ
32	WAWS	JACKSONVILLE FL	0.0	PLN	DTVPLN -DTVP1165
32	WPNG-LD	PEARSON GA	169.7	CP	BDCCDTL -20061026ADL
33	W33BL	CHIEFLAND FL	149.3	LIC	BLTTL -19960415IC
33	WBXG-CA	GAINESVILLE FL	109.0	APP	BMPPTA -20020510AAK
33	WBXG-CA	GAINESVILLE FL	108.2	LIC	BLTTA -20030911AAZ
33	NEW	LIVE OAK FL	136.5	APP	BNPDTL -20090825CAM
33	NEW	MADISON FL	191.1	APP	BNPDTL -20090825AHE
33	WDSC-TV	NEW SMYRNA BEACH FL	192.2	LIC	BLEDT -20050121AKU
33	WCEU	NEW SMYRNA BEACH FL	192.2	PLN	DTVPLN -DTVP1207
33	NEW	TALLAHASSEE FL	261.3	APP	BNPDTL -20090825ALP
33	WRXY-TV	TICE FL	389.1	LIC	BLCDT -20060627ABA
33	WRXY-TV	TICE FL	389.1	PLN	DTVPLN -DTVP1208
33	WRXY-TV	TICE FL	389.1	CP	BPCDT -20080619ADR
33	NEW	WABASSO FL	302.9	APP	BNPDTL -20091106AEV
33	NEW	YANKEETOWN FL	176.8	APP	BNPDTL -20090825ALE
33	NEW	MACON GA	333.4	APP	BNPDTL -20090825AWC
33	NEW	WARNER ROBINS GA	332.9	APP	BNPDTL -20090825AET
33	WEBB-TV	ALLENDALE SC	323.5	LIC	BLEDT -20050915AAY
33	WEBB-TV	ALLENDALE SC	323.5	PLN	DTVPLN -DTVP1223
34	WCWJ	JACKSONVILLE FL	0.8	LIC	BLCDT -20060630AFM
34	WCWJ	JACKSONVILLE FL	0.8	PLN	DTVPLN -DTVP1240
36	WUFT	GAINESVILLE FL	101.6	LIC	BLEDT -20040304AAF
36	WUFT	GAINESVILLE FL	101.6	PLN	DTVPLN -DTVP1316
48	WFXU	LIVE OAK FL	121.4	APP	BPCDT -20080617ABP
48	WFXU	LIVE OAK FL	141.5	LIC	BLCDT -20071113ACD
48	WJGV-CD	PALATKA FL	78.9	LIC	BLDTA -20090930AKO
25	WJGV-CD	PALATKA FL	78.9	APP	USERRECORD-01

Proposed station is beyond the site to
nearest cell evaluation distance

#####

Analysis of Interference to Affected Station 38

Analysis of current record

Channel	Call	City/State	Application Ref. No.
33	WUJF-LP	MAXVILLE FL	BLTTL -20070119ADT

Stations Potentially Affecting This Station

Chan	Call	City/State	Dist(km)	Status	Application Ref. No.
------	------	------------	----------	--------	----------------------

KESSLER AND GEHMAN ASSOCIATES, INC.

WJGV-CD - PALATKA,FL

Exhibit E5, PAGE 31 of 33

31	WOGX	OCALA FL	125.9	LIC	BLCDT	-20020730ABS
31	WOGX	OCALA FL	125.9	PLN	DTVPLN	-DTVP1125
32	W32DI-D	CHIEFLAND FL	144.2	LIC	BLDTL	-20100108ABL
32	WAWS	JACKSONVILLE FL	0.0	LIC	BLCDT	-20030328ANQ
32	WAWS	JACKSONVILLE FL	0.0	PLN	DTVPLN	-DTVP1165
32	WPNG-LD	PEARSON GA	169.7	CP	BDCCDTL	-20061026ADL
33	W33BL	CHIEFLAND FL	149.3	LIC	BLTTL	-19960415IC
33	WBXG-CA	GAINESVILLE FL	109.0	APP	BMPPTA	-20020510AAK
33	WBXG-CA	GAINESVILLE FL	108.2	LIC	BLTTA	-20030911AAZ
33	NEW	LIVE OAK FL	136.5	APP	BNPDTL	-20090825CAM
33	NEW	MADISON FL	191.1	APP	BNPDTL	-20090825AHE
33	WDSC-TV	NEW SMYRNA BEACH FL	192.2	LIC	BLEDT	-20050121AKU
33	WCEU	NEW SMYRNA BEACH FL	192.2	PLN	DTVPLN	-DTVP1207
33	NEW	TALLAHASSEE FL	261.3	APP	BNPDTL	-20090825ALP
33	WRXY-TV	TICE FL	389.1	LIC	BLCDT	-20060627ABA
33	WRXY-TV	TICE FL	389.1	PLN	DTVPLN	-DTVP1208
33	WRXY-TV	TICE FL	389.1	CP	BPCDT	-20080619ADR
33	NEW	WABASSO FL	302.9	APP	BNPDTL	-20091106AEV
33	NEW	YANKEETOWN FL	176.8	APP	BNPDTL	-20090825ALE
33	W33AL	BRUNSWICK GA	98.7	LIC	BLTT	-19901119ID
33	NEW	MACON GA	333.4	APP	BNPDTL	-20090825AWC
33	NEW	WARNER ROBINS GA	332.9	APP	BNPDTL	-20090825AET
33	WEBA-TV	ALLENDALE SC	323.5	LIC	BLEDT	-20050915AAY
33	WEBA-TV	ALLENDALE SC	323.5	PLN	DTVPLN	-DTVP1223
34	WCWJ	JACKSONVILLE FL	0.8	LIC	BLCDT	-20060630AFM
34	WCWJ	JACKSONVILLE FL	0.8	PLN	DTVPLN	-DTVP1240
36	WUFT	GAINESVILLE FL	101.6	LIC	BLEDT	-20040304AAF
36	WUFT	GAINESVILLE FL	101.6	PLN	DTVPLN	-DTVP1316
48	WFXU	LIVE OAK FL	121.4	APP	BPCDT	-20080617ABP
48	WFXU	LIVE OAK FL	141.5	LIC	BLCDT	-20071113ACD
48	WJGV-CD	PALATKA FL	78.9	LIC	BLDTA	-20090930AKO
25	WJGV-CD	PALATKA FL	78.9	APP	USERRECORD-01	

Proposed station is beyond the site to
nearest cell evaluation distance

#####

Analysis of Interference to Affected Station 39

Analysis of current record

Channel	Call	City/State	Application Ref. No.
33	W33AL	BRUNSWICK GA	BLTT -19901119ID

Stations Potentially Affecting This Station

Chan	Call	City/State	Dist(km)	Status	Application Ref. No.
32	WAWS	JACKSONVILLE FL	98.7	LIC	BLCDT -20030328ANQ
32	WAWS	JACKSONVILLE FL	98.7	PLN	DTVPLN -DTVP1165
32	WPNG-LD	PEARSON GA	127.4	CP	BDCCDTL -20061026ADL
33	WDFX-TV	OZARK AL	387.6	LIC	BLCDT -20050915APH
33	WDFX-TV	OZARK AL	387.6	PLN	DTVPLN -DTVP1198
33	WDFX-TV	OZARK AL	387.6	CP	BPCDT -20080620AGU
33	NEW	LIVE OAK FL	174.4	APP	BNPDTL -20090825CAM
33	NEW	MADISON FL	209.8	APP	BNPDTL -20090825AHE
33	WUJF-LP	MAXVILLE FL	98.7	LIC	BLTTL -20070119ADT
33	WDSC-TV	NEW SMYRNA BEACH FL	288.1	LIC	BLEDT -20050121AKU
33	WCEU	NEW SMYRNA BEACH FL	288.1	PLN	DTVPLN -DTVP1207
33	NEW	TALLAHASSEE FL	272.7	APP	BNPDTL -20090825ALP
33	NEW	WABASSO FL	395.6	APP	BNPDTL -20091106AEV
33	NEW	YANKEETOWN FL	263.1	APP	BNPDTL -20090825ALE
33	NEW	MACON GA	259.8	APP	BNPDTL -20090825AWC
33	NEW	WARNER ROBINS GA	259.3	APP	BNPDTL -20090825AET
33	WEBA-TV	ALLENDALE SC	224.8	LIC	BLEDT -20050915AAY
33	WEBA-TV	ALLENDALE SC	224.8	PLN	DTVPLN -DTVP1223
33	NEW	FLORENCE SC	384.2	APP	BNPDTL -20090825AYX
33	NEW	FLORENCE SC	379.2	APP	BNPDTL -20090904ACC

KESSLER AND GEHMAN ASSOCIATES, INC.

WJGV-CD - PALATKA,FL

Exhibit E5, PAGE 32 of 33

34	WCWJ	JACKSONVILLE FL	99.2	LIC	BLCDDT	-20060630AFM
34	WCWJ	JACKSONVILLE FL	99.2	PLN	DTVPLN	-DTVP1240
35	WGSA	BAXLEY GA	99.4	LIC	BLCDDT	-20071120AJC
35	WGSA	BAXLEY GA	99.4	PLN	DTVPLN	-DTVP1280
25	WJGV-CD	PALATKA FL	177.3	APP	USERRECORD-01	

Proposed station is beyond the site to
nearest cell evaluation distance

#####

Analysis of Interference to Affected Station 40

Analysis of current record

Channel	Call	City/State	Application Ref. No.
25	WJGV-CD	PALATKA FL	USERRECORD-01

Stations Potentially Affecting This Station

Chan	Call	City/State	Dist(km)	Status	Application Ref. No.
24	NEW	GAINESVILLE FL	84.2	APP	BNPDTL -20090825ANO
24	WESH	OCALA FL	58.7	APP	BDRTCDT -20090819AAD
24	WVCI-LD	ORLANDO FL	113.0	CP	BDISDTL -20090220AAQ
25	NEW	CHIPLEY FL	393.2	APP	BNPDTL -20090825AWD
25	NEW	GAINESVILLE FL	84.2	APP	BNPDTL -20090825AOD
25	WIMP-CD	MIAMI FL	426.0	APP	BSTA -20090924AAI
25	WIMP-CD	MIAMI FL	426.0	LIC	BLDTA -20091029ABI
25	WVEA-TV	VENICE FL	203.2	LIC	BLCDDT -20060627ABX
25	WVEA-TV	VENICE FL	203.2	PLN	DTVPLN -DTVP0905
25	WBWP-LP	WEST PALM BEACH FL	347.5	CP	BDISDTL -20081216BJG
25	WBWP-LP	WEST PALM BEACH FL	347.5	APP	BMPDTL -20100209ABH
25	NEW	ALBANY GA	324.8	APP	BNPDTL -20090825AHS
25	NEW	AUGUSTA GA	417.5	APP	BNPDTL -20090825BBN
25	NEW	COLUMBUS GA	423.9	APP	BNPDTL -20090825AXS
25	WQIX-LD	VIDALIA GA	255.4	CP	BDFCDTL -20080903ABP
26	WGVV-LD	GAINESVILLE FL	68.6	LIC	BLDTL -20080605AAQ
26	W26DP-D	INVERNESS FL	101.5	LIC	BLDTT -20100122AAL
26	WKMG-TV	ORLANDO FL	124.4	CP MOD	BMPCDDT -20080620AJM
26	WKMG-TV	ORLANDO FL	124.4	PLN	DTVPLN -DTVP0937

Total scenarios = 4

Result key: 12

Scenario 1 Affected station 40 WJGV-CD
Before Analysis

Results for: 25A FL PALATKA USERRECORD01 APP

HAAT 102.0 m, ATV ERP 9.5 kW

	POPULATION	AREA (sq km)
within Noise Limited Contour	115834	5540.2
not affected by terrain losses	115834	5540.2
lost to NTSC IX	0	0.0
lost to additional IX by ATV	0	0.0
lost to ATV IX only	0	0.0
lost to all IX	0	0.0

Potential Interfering Stations Included in above Scenario 1

Result key: 13

Scenario 2 Affected station 40 WJGV-CD
Before Analysis

Results for: 25A FL PALATKA USERRECORD01 APP

HAAT 102.0 m, ATV ERP 9.5 kW

POPULATION	AREA (sq km)
------------	--------------

KESSLER AND GEHMAN ASSOCIATES, INC.

WJGV-CD - PALATKA,FL

Exhibit E5, PAGE 33 of 33

within Noise Limited Contour	115834	5540.2
not affected by terrain losses	115834	5540.2
lost to NTSC IX	0	0.0
lost to additional IX by ATV	668	69.7
lost to ATV IX only	668	69.7
lost to all IX	668	69.7

Potential Interfering Stations Included in above Scenario 2

24A FL OCALA	BDRTCDT	20090819AAD	APP
25A FL GAINESVILLE	BNPDTL	20090825AOD	APP

Result key: 14
 Scenario 3 Affected station 40 WJGV-CD
 Before Analysis

Results for: 25A FL PALATKA USERRECORD01 APP
 HAAT 102.0 m, ATV ERP 9.5 kW

	POPULATION	AREA (sq km)
within Noise Limited Contour	115834	5540.2
not affected by terrain losses	115834	5540.2
lost to NTSC IX	0	0.0
lost to additional IX by ATV	220	23.6
lost to ATV IX only	220	23.6
lost to all IX	220	23.6

Potential Interfering Stations Included in above Scenario 3

24A FL OCALA	BDRTCDT	20090819AAD	APP
--------------	---------	-------------	-----

Result key: 15
 Scenario 4 Affected station 40 WJGV-CD
 Before Analysis

Results for: 25A FL PALATKA USERRECORD01 APP
 HAAT 102.0 m, ATV ERP 9.5 kW

	POPULATION	AREA (sq km)
within Noise Limited Contour	115834	5540.2
not affected by terrain losses	115834	5540.2
lost to NTSC IX	0	0.0
lost to additional IX by ATV	448	46.1
lost to ATV IX only	448	46.1
lost to all IX	448	46.1

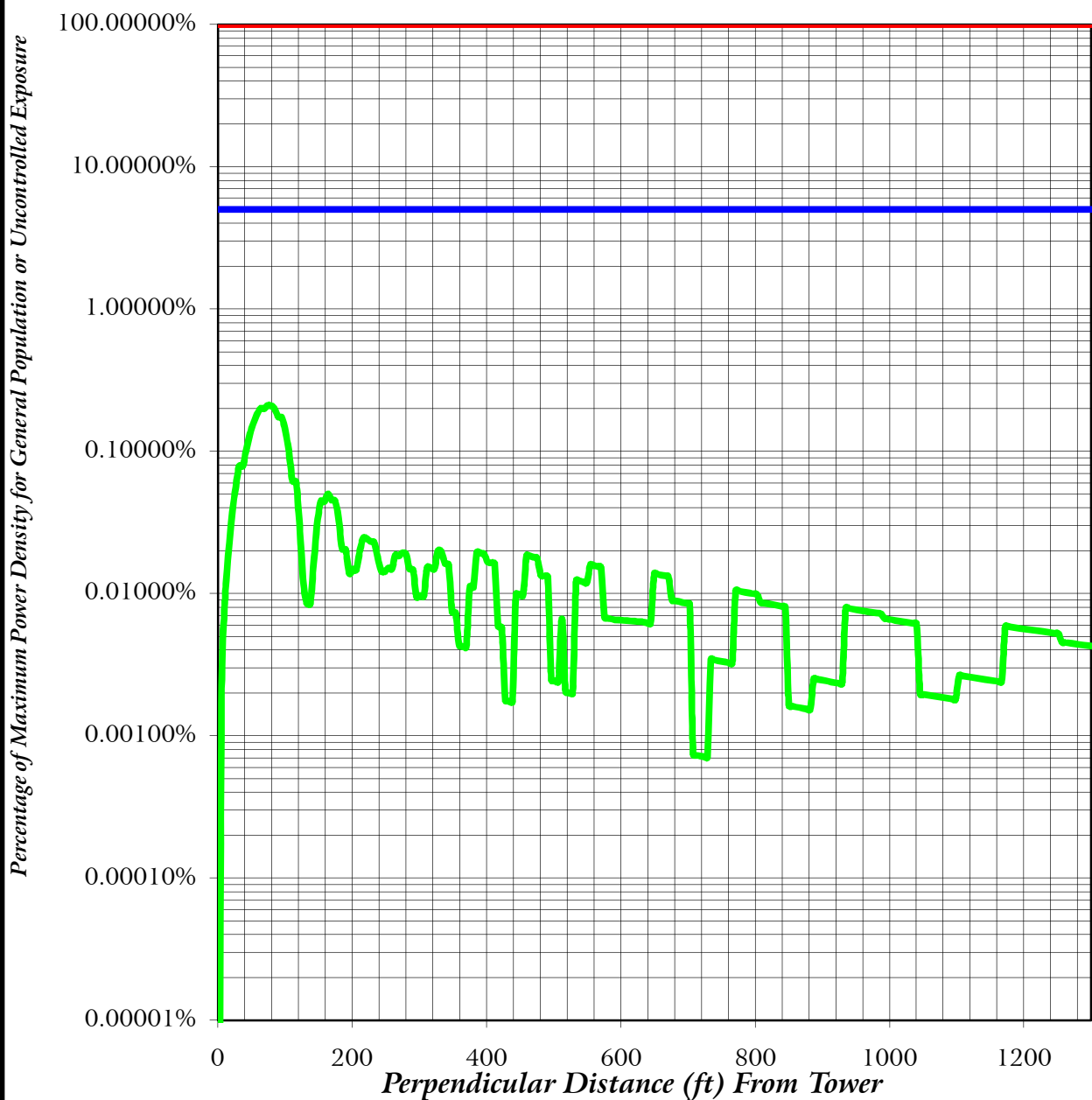
Potential Interfering Stations Included in above Scenario 4

25A FL GAINESVILLE	BNPDTL	20090825AOD	APP
--------------------	--------	-------------	-----

#####

FINISHED FINISHED FINISHED FINISHED FINISHED FINISHED

FAR FIELD EXPOSURE TO RF EMISSIONS



- Maximum Allowable General Population or Uncontrolled Exposure
- 5 % of Maximum General Population or Uncontrolled Exposure
- Percentage of Maximum General Population or Uncontrolled Exposure

KESSLER & GEHMAN

TELECOMMUNICATIONS CONSULTING ENGINEERS
507 N.W. 60th Street, Suite C
Gainesville, Florida 32607

WJGV-CD

PALATKA, FLORIDA

20100219

EXHIBIT E6



METHODOLOGY AND EXPLANATION OF
ENVIRONMENTAL IMPACT / RADIO FREQUENCY RADIATION
HAZARD ANALYSIS

A theoretical analysis has been conducted of the human exposure to radio frequency radiation ("RFR") using the calculation methodology described in *OET Bulletin 65, Edition 97-01*. The RFR analysis is conducted pursuant to the following methodology:

Terrain¹ extraction is compiled from the proposed tower site to radial lengths of 0.25 miles in 0.001 mile increments for 360 radials. The power density is calculated for each terrain point at 6 feet above ground level using the elevation and azimuth pattern of the proposed broadcast antenna. The power density calculations are conducted using the lower edge of the proposed channel frequency. To account for ground reflections, a coefficient of 1.6 was included in the calculation.

The resulting cylindrical polar analysis is then summarized into a coordinate plane graph using the following methodology:

Starting from the origin the maximum calculated RFR value is determined among the 360 degree radials for each 0.001 mile increment, the value is then converted into a percentage of the maximum allowable general population or uncontrolled exposure and plotted as a function of perpendicular distance from the tower.

¹ Terrain extraction is based upon a 3 arc second point spacing terrain database.