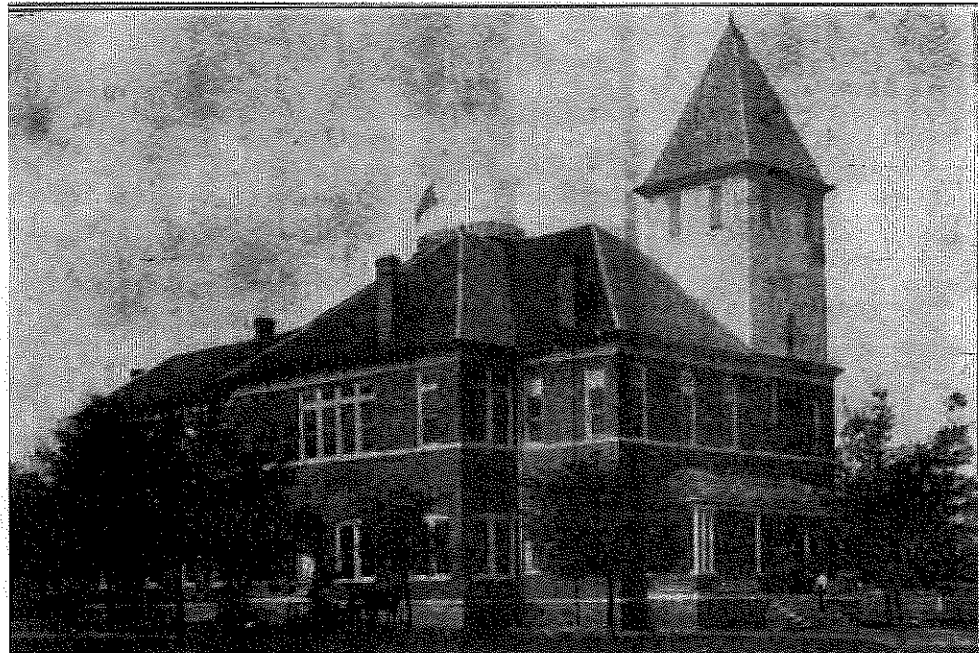


Camilla, Georgia

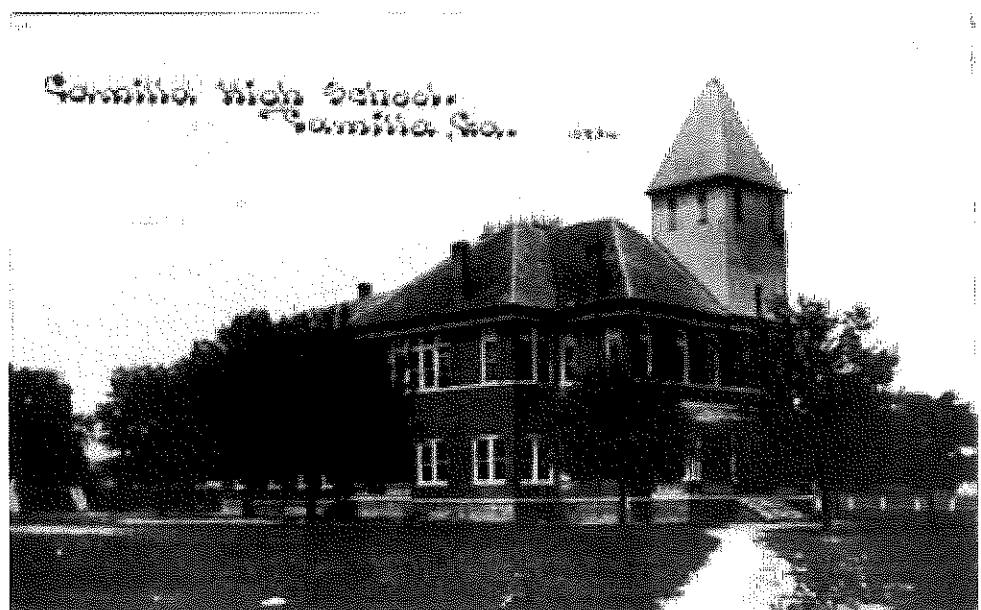
A photographic look at the first 150 years

School History

[Home](#)[Historical Photos](#)[Early Ads](#)[Early Businesses](#)[Early Maps](#)[Local Art](#)[Overview](#)[Courthouse](#)[Schools](#)[Broad Street](#)[More Broad Street](#)[Scott Street](#)[Train Depot](#)[Baptist Church](#)[Methodist Church](#)[Presbyterian Church](#)[Fire Department](#)[County Jail](#)[American Legion](#)[Hotels and Motels](#)[Aerial Photos](#)[Early Homes](#)[Parks](#)[Unknown Photos](#)[Historic Markers](#)[Historic documents](#)[Early Pelham](#)

Camilla School 1896

This picture came from the 1957 Camilla Enterprise Centennial Edition. This school was located where the Camilla Hospital now stands.



Here is another picture of the school, this time from a 1912 postcard.



Camilla School 1904-05 Graduating Class

This is thought to be the first graduating class of the Camilla School. Included in this photo are Bessie Dixon, Lallie Wilson, Lucille Culpepper, Henrietta Brimberry, Annie Grace Brimberry, Gemmie Lou Cox, Janie Collins, Charlie McNair, W.F. Cullens, Mittie Lee Palmer, Ruth Wilson, Clara Freeman, P.E. Bailey, F.R. Hartsfield, and C.F. Brimberry. The three boys at the top are Ed Whitworth, Henry Turner Spence, and Orson Swindle. The professor B.S. Branham is at top.



Camilla Schools 1918

This is another view of the schools from 1918.



Camilla Consolidated School (1943)

Here is a view of the old Camilla Consolidated School, which later became the high school. This picture was taken about 1943.



The same school building later - in 2001