

**MULTIPLE OWNERSHIP
COMPLIANCE STUDY
WLOB-FM – Rumford, Maine**
December 2004

This Multiple Ownership Compliance Study was conducted to determine if Atlantic Coast Radio, LLC would comply with §73.3555 of the Commission's rules with the move of WLOB-FM, Rumford, Maine. Exhibit #1 indicates the present co-owned stations. The six co-owned stations are: WLOB-FM (Application), Rumford, Maine; WJAE (AM), Westbrook, Maine; WJJB-AM, Brunswick, Maine; WJJB-FM, Topsham Maine; WLOB-AM, Portland, Maine and WRED (FM), Saco, Maine. Because the WLOB-FM (Application) facility would not be located within the boundaries of any BIA Metro, this study follows the guidelines of contour-overlap methodology.

The city grade contours of these stations form two markets. The subject stations of Market #1 are WLOB-FM (Application), WJJB-AM and WJJB-FM and are shown in Exhibit #2. Exhibits #3 and 4 show the city grade contours of AM and FM stations providing service to the subject area. Exhibit #5 is a tabulation of services to the subject area in Market #1.

There are more than 15 services in Market #1. For simplicity, not all services are shown in the market. In this study, we have indicated 22 services including the 3 subject stations (1 AM and 2 FM). §73.3555 (a)(1)(iii) states that a person or single entity (or entities under common control) may have a cognizable interest in licenses for AM or FM radio broadcast stations in accordance with the following limits:

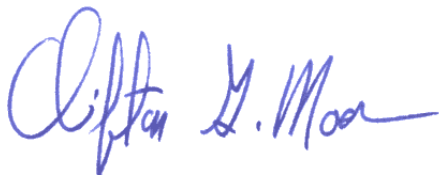
"In a radio market with between 15 and 29 (inclusive) full-power, commercial and noncommercial radio stations, not more than 6 commercial radio stations in total and not more than 4 commercial stations in the same service (AM or FM);"

The subject stations of Market #2 are WLOB-FM (Application), WJAE (AM) and WLOB-AM and are shown in Exhibit #6. Exhibits #7 and 8 show the city grade contours of AM and FM stations providing service to the subject area. Exhibit #9 is a tabulation of services to the subject area in Market #2.

There are more than 15 services in Market #2. For simplicity, not all services are shown in the market. In this study, we have indicated 22 services including the 3 subject stations (2 AM and 1 FM). §73.3555 (a)(1)(iii) states that a person or single entity (or entities under common control) may have a cognizable interest in licenses for AM or FM radio broadcast stations in accordance with the following limits:

"In a radio market with between 15 and 29 (inclusive) full-power, commercial and noncommercial radio stations, not more than 6 commercial radio stations in total and not more than 4 commercial stations in the same service (AM or FM);"

Therefore, based on these findings, it is believed that Atlantic Coast Radio, LLC is in compliance with §73.3555 of the Commission's rules. All statements contained herein are thought to be accurate and correct to the knowledge of the undersigned.



Clifton G. Moor
Bromo Communications, Inc.

December 15, 2004

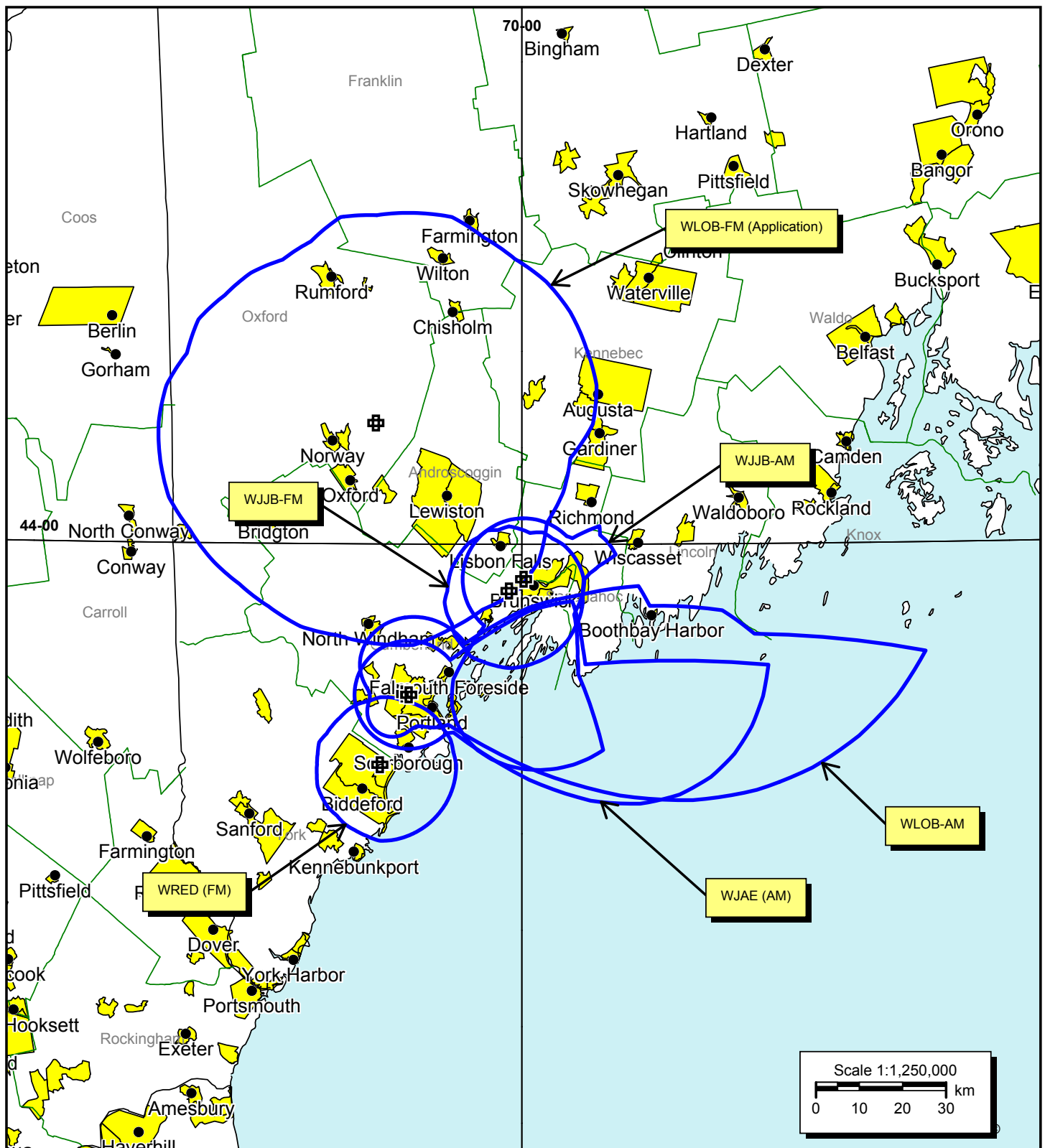


EXHIBIT #1
Co-Owned Stations
MULTIPLE OWNERSHIP COMPLIANCE STUDY
WLOB-FM - Rumford, Maine

Bromo Communications, Inc.
 Atlanta, Georgia
 December 2004

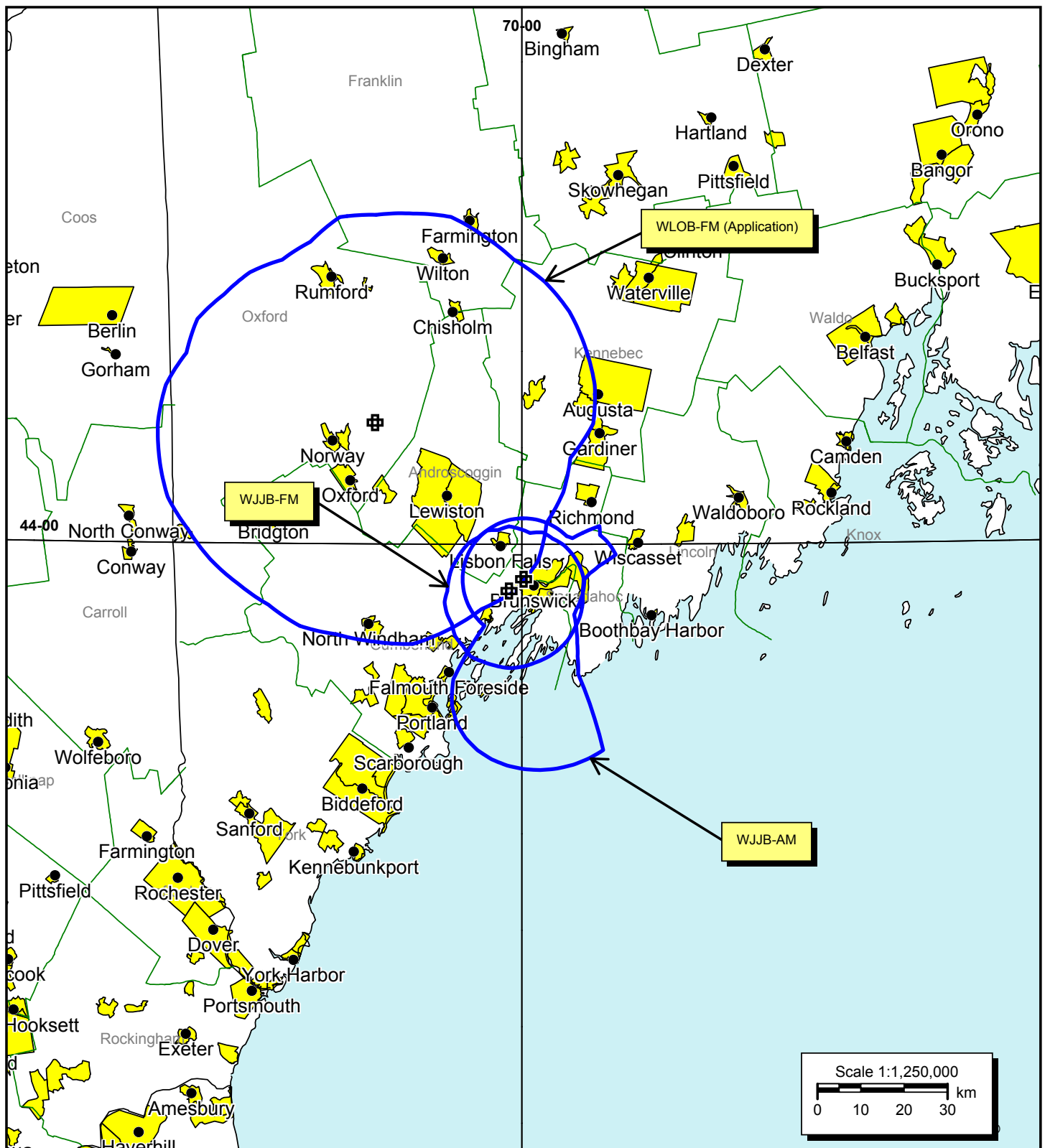


EXHIBIT #2
Subject Stations - Market #1
MULTIPLE OWNERSHIP COMPLIANCE STUDY
WLOB-FM - Rumford, Maine

Bromo Communications, Inc.
 Atlanta, Georgia
 December 2004

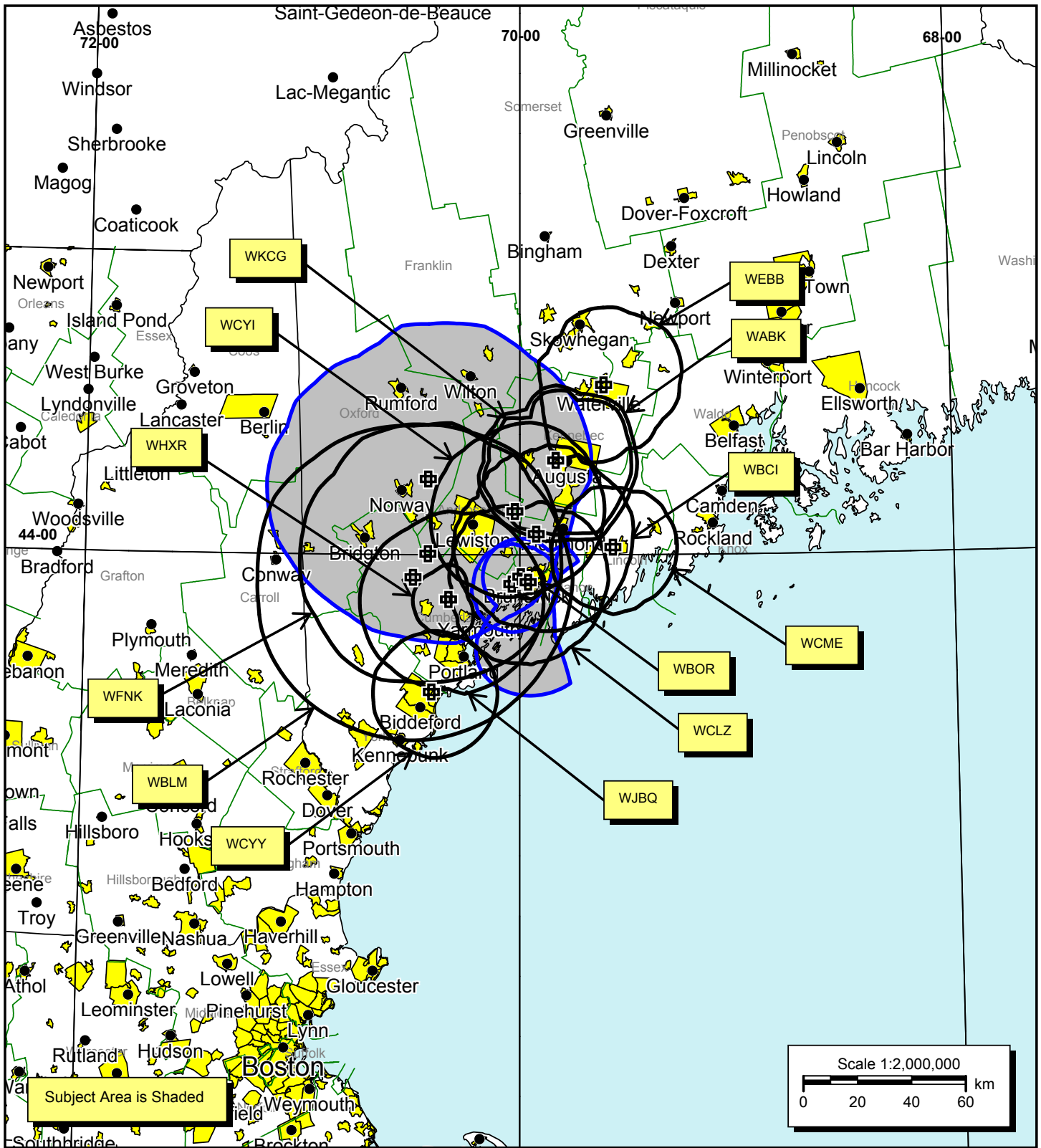


EXHIBIT #3
FM Services to Subject Area - Market #1
MULTIPLE OWNERSHIP COMPLIANCE STUDY
WLOB-FM - Rumford, Maine

Bromo Communications, Inc.
 Atlanta, Georgia
 December 2004

EXHIBIT #5
MULTIPLE OWNERSHIP
COMPLIANCE STUDY
WLOB-FM – Rumford, Maine
December 2004

Market #1

Tabulation of Services to Subject Area

Subject Stations

<u>Call</u>	<u>Ch/Freq</u>	<u>Latitude</u>	<u>Longitude</u>	<u>Power (kW)</u>	<u>City</u>	<u>State</u>
WLOB-FM (App.)	242C1	44° 15' 03"	70° 25' 16"	40	Rumford	ME
WJJB-AM	900	43° 55' 40"	69° 59' 43"	1	Brunswick	ME
WJJB-FM	238A	43° 54' 12"	70° 02' 13"	3	Topsham	ME

FM Services to Subject Area

<u>Call</u>	<u>Ch/Freq</u>	<u>Latitude</u>	<u>Longitude</u>	<u>Power (kW)</u>	<u>City</u>	<u>State</u>
WABK	282B	44° 18' 36"	69° 49' 51"	50	Gardiner	ME
WBCI	290B	44° 04' 09"	69° 55' 28"	50	Bath	ME
WBLM	275C	43° 55' 29"	70° 29' 29"	100	Portland	ME
WBOR	216A	43° 54' 34"	69° 57' 43"	0.3	Brunswick	ME
WCLZ	255B	43° 55' 40"	69° 59' 43"	48	Brunswick	ME
WCME	244B1	44° 01' 31"	69° 34' 17"	15.5	Boothbay Harbor	ME
WCYI	230B	44° 08' 40"	70° 01' 22"	27.5	Lewiston	ME
WCYY	232B1	43° 32' 39"	70° 24' 16"	11.5	Biddeford	ME
WEBB	253C1	44° 33' 52"	69° 36' 39"	61	Waterville	ME
WFNK	298C1	44° 00' 12"	70° 25' 24"	91	Lewiston	ME
WHXR	294A	43° 51' 06"	70° 19' 40"	0.81	North Windham	ME
WJBQ	250B	43° 51' 06"	70° 19' 40"	16	Portland	ME
WKCG	267B	44° 18' 51"	69° 50' 03"	50	Augusta	ME

AM Services to Subject Area

<u>Call</u>	<u>Ch/Freq</u>	<u>Latitude</u>	<u>Longitude</u>	<u>Power (kW)</u>	<u>City</u>	<u>State</u>
WBAE	1490	43° 39' 48"	70° 16' 17"	1	Portland	ME
WCNM	1240	44° 06' 55"	70° 14' 56"	1	Lewiston	ME
WFAU	1280	44° 14' 53"	69° 48' 51"	5	Gardiner	ME
WGAN	560	43° 41' 22"	70° 19' 00"	5	Portland	ME
WJTO	730	43° 52' 39"	69° 50' 49"	1	Bath	ME
WJZN	1400	44° 17' 30"	69° 46' 27"	1	Augusta	ME

Bromo Communications, Inc. Atlanta, Georgia

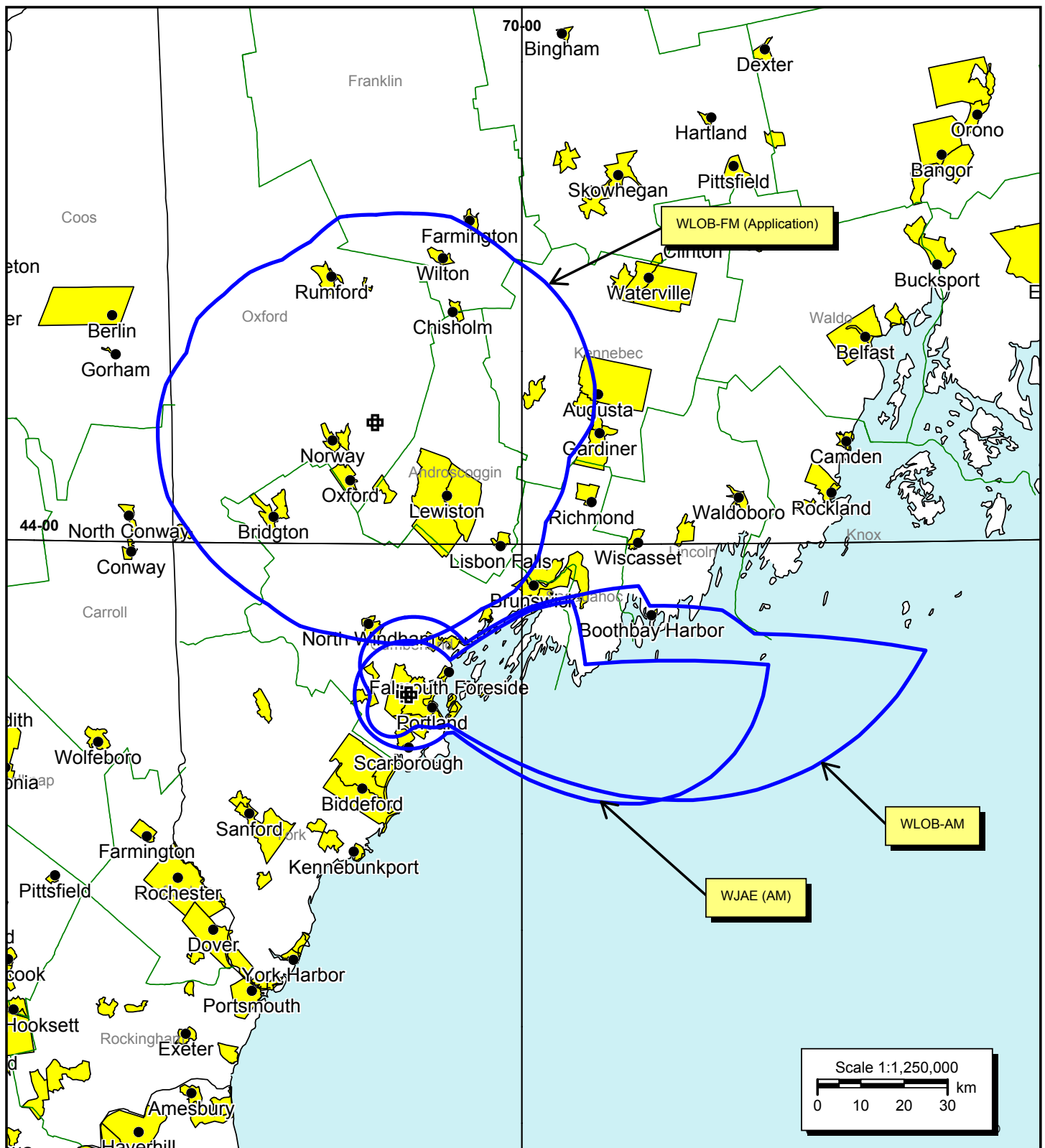


EXHIBIT #6
Subject Stations - Market #2
MULTIPLE OWNERSHIP COMPLIANCE STUDY
WLOB-FM - Rumford, Maine

Bromo Communications, Inc.
 Atlanta, Georgia
 December 2004

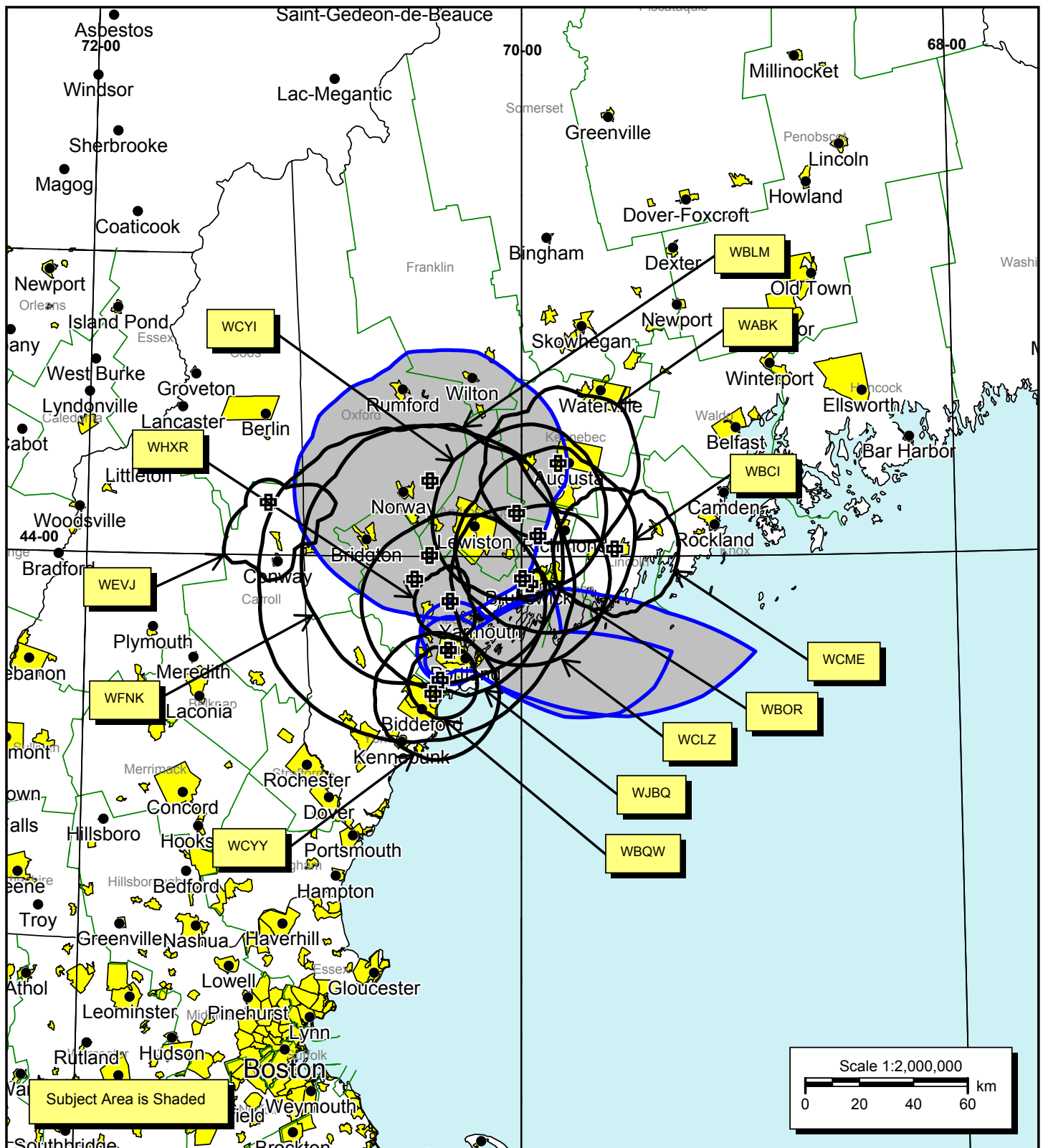


EXHIBIT #7
FM Services to Subject Area - Market #2
MULTIPLE OWNERSHIP COMPLIANCE STUDY
WLOB-FM - Rumford, Maine

Bromo Communications, Inc.
 Atlanta, Georgia
 December 2004

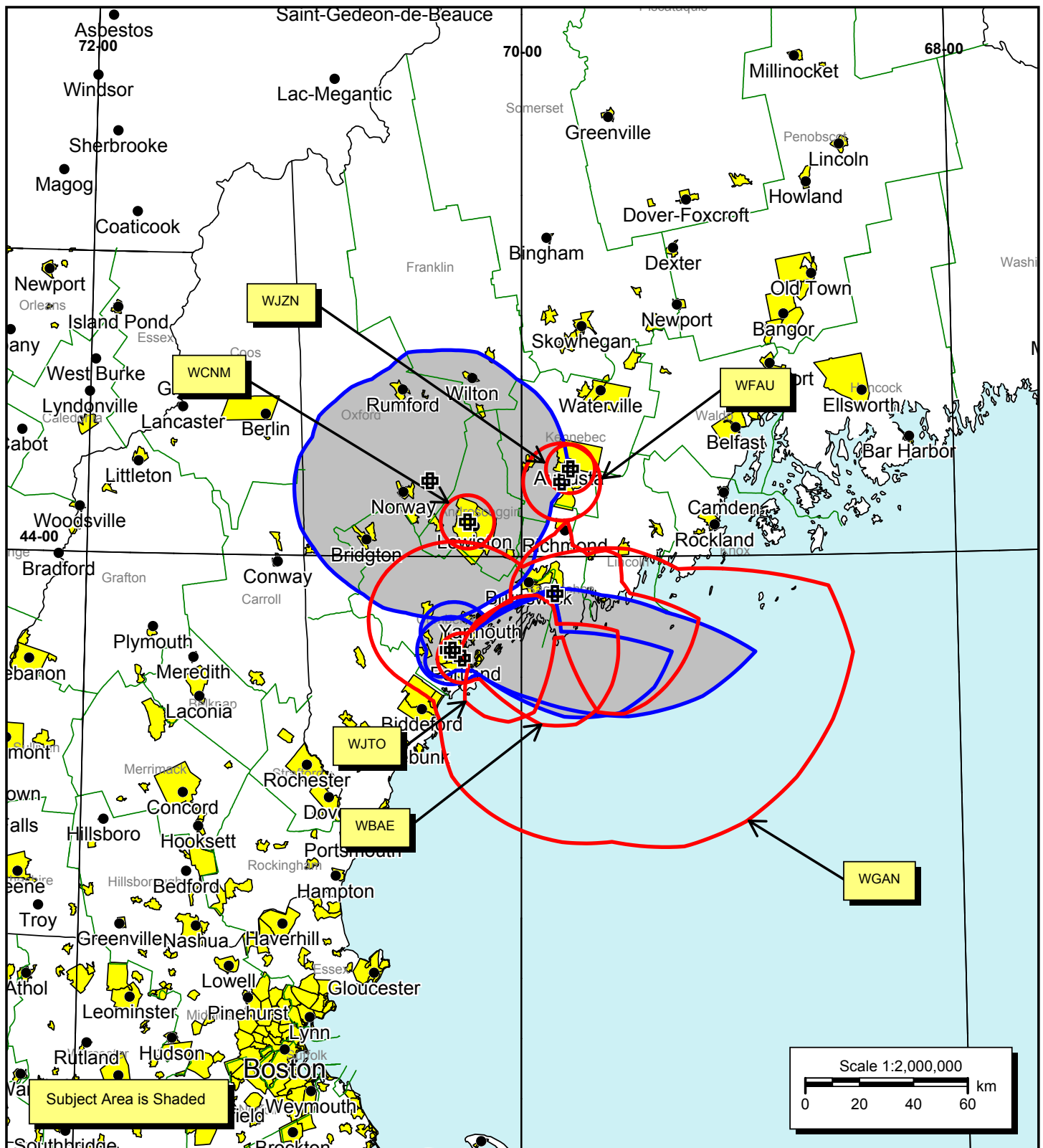


EXHIBIT #8
AM Services to Subject Area - Market #2
MULTIPLE OWNERSHIP COMPLIANCE STUDY
WLOB-FM - Rumford, Maine

Bromo Communications, Inc.
 Atlanta, Georgia
 December 2004

EXHIBIT #9
MULTIPLE OWNERSHIP
COMPLIANCE STUDY
WLOB-FM – Rumford, Maine
December 2004

Market #2

Tabulation of Services to Subject Area

Subject Stations

<u>Call</u>	<u>Ch/Freq</u>	<u>Latitude</u>	<u>Longitude</u>	<u>Power (kW)</u>	<u>City</u>	<u>State</u>
WLOB-FM (App.)	242C1	44° 15' 03"	70° 25' 16"	40	Rumford	ME
WJAE	1440	43° 41' 16"	70° 19' 24"	5	Westbrook	ME
WLOB-AM	1310	43° 41' 22"	70° 20' 06"	5	Portland	ME

FM Services to Subject Area

<u>Call</u>	<u>Ch/Freq</u>	<u>Latitude</u>	<u>Longitude</u>	<u>Power (kW)</u>	<u>City</u>	<u>State</u>
WABK	282B	44° 18' 36"	69° 49' 51"	50	Gardiner	ME
WBCI	290B	44° 04' 09"	69° 55' 28"	50	Bath	ME
WBLM	275C	43° 55' 29"	70° 29' 29"	100	Portland	ME
WBOR	216A	43° 54' 34"	69° 57' 43"	0.3	Brunswick	ME
WBQW	292A	43° 35' 22"	70° 22' 20"	3	Scarborough	ME
WCLZ	255B	43° 55' 40"	69° 59' 43"	48	Brunswick	ME
WCME	244B1	44° 01' 31"	69° 34' 17"	15.5	Boothbay Harbor	ME
WCYI	230B	44° 08' 40"	70° 01' 22"	27.5	Lewiston	ME
WCYY	232B1	43° 32' 39"	70° 24' 16"	11.5	Biddeford	ME
WEVJ	258A	44° 10' 30"	71° 10' 07"	4.7	Jackson	NH
WFNK	298C1	44° 00' 12"	70° 25' 24"	91	Lewiston	ME
WHXR	294A	43° 51' 06"	70° 19' 40"	0.81	North Windham	ME
WJBQ	250B	43° 51' 06"	70° 19' 40"	16	Portland	ME

AM Services to Subject Area

<u>Call</u>	<u>Ch/Freq</u>	<u>Latitude</u>	<u>Longitude</u>	<u>Power (kW)</u>	<u>City</u>	<u>State</u>
WBAE	1490	43° 39' 48"	70° 16' 17"	1	Portland	ME
WCNM	1240	44° 06' 55"	70° 14' 56"	1	Lewiston	ME
WFAU	1280	44° 14' 53"	69° 48' 51"	5	Gardiner	ME
WGAN	560	43° 41' 22"	70° 19' 00"	5	Portland	ME
WJTO	730	43° 52' 39"	69° 50' 49"	1	Bath	ME
WJZN	1400	44° 17' 30"	69° 46' 27"	1	Augusta	ME

Bromo Communications, Inc.
Atlanta, Georgia