



NORTHERN PRIDE
COMMUNICATIONS, Inc.

20 Center Park Road • Topsham, ME 04086

Site Name: Sanford

April 22, 2019

Notes

Under the direction of the Maine Public Broadcasting Engineer on site, Aaron Carter, and using markers placed by surveyor we confirmed the angle of the antenna array to be 58 deg. True north.

We verified with our **Model#:** 3ZRFV-2000 antenna alignment tool with attached data and photos that the antennas are mounted at 58 deg. True north.

Lincoln Erhard

Project Manager

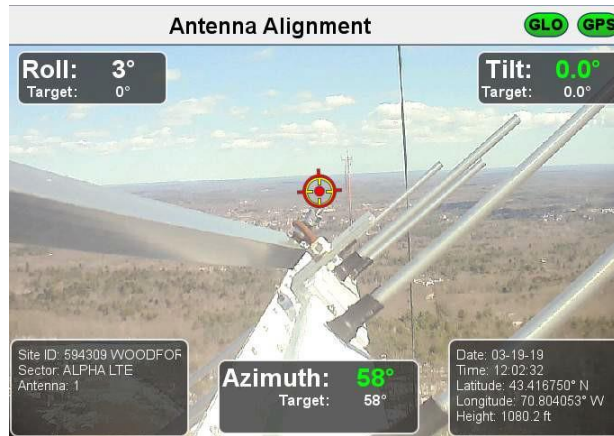
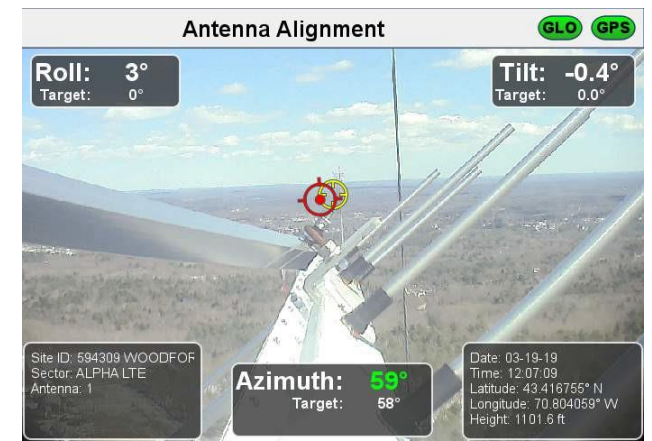
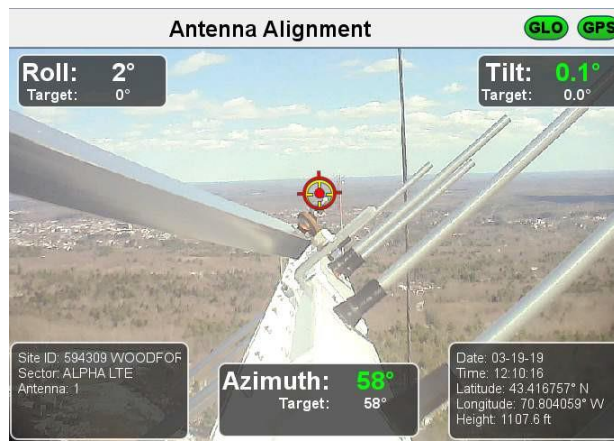
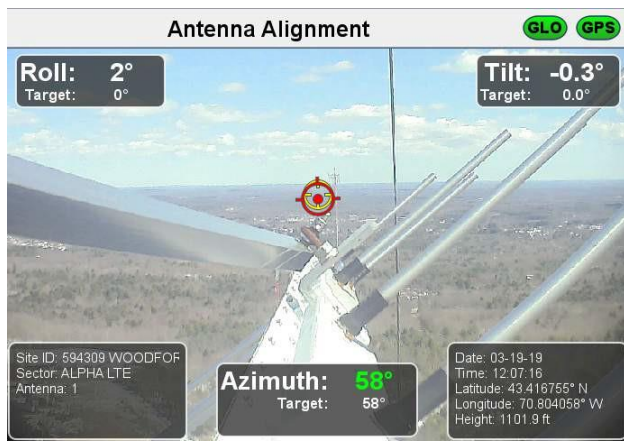
Northern Pride Communications



Antenna Alignment Report: MPBN Sanford

Sector	Antenna	Target			Measured			Height	Height Type	Latitude	Longitude	Date	Time	Image Name
		Azimuth	Tilt	Roll	Azimuth	Tilt	Roll							
ALPHA LTE	1	58	0.0	0	58	-0.5	1	1101.9 ft	GPS AMSL	43.416755	-70.804058	Mar 19, 2019	12:07:17 PM	3ZRFV225
ALPHA LTE	1	58	0.0	0	58	0.1	2	1107.7 ft	GPS AMSL	43.416757	-70.804059	Mar 19, 2019	12:10:17 PM	3ZRFV226
ALPHA LTE	1	58	0.0	0	59	-0.2	3	1101.6 ft	GPS AMSL	43.416755	-70.804059	Mar 19, 2019	12:07:10 PM	3ZRFV224
ALPHA LTE	1	58	0.0	0	58	-0.5	1	1074.8 ft	GPS AMSL	43.416760	-70.804062	Mar 19, 2019	11:56:12 AM	3ZRFV222
ALPHA LTE	1	58	0.0	0	59	0.0	3	1080.1 ft	GPS AMSL	43.416750	-70.804053	Mar 19, 2019	12:02:33 PM	3ZRFV223

Note that image 3ZFRV224 and the associated data is for bay number two as first installed. 3ZFRV225 and associated dated shows the same bay as corrected.



Model#: 3ZRFV-2000
Serial#: 18481237

Firmware: 2.5.86
Calibration Due: Jul 13, 2019

Units: Feet (ft)
DATUM: WGS84

Azimuth Threshold: 1
Time Zone: (GMT-05:00)

Roll Threshold: 0
Tilt Threshold: 0.2

Position: N-S decimal degrees
*** Azimuth Offset**