

Attachment A

The following are stations licensed to NRG License Sub, LLC. :

Call Sign	Facility ID Number	City/State of License
WIXN(AM)	21201	Dixon, Illinois
WRCV(FM)	21203	Dixon, Illinois
WSEY(FM)	1641	Oregon, Illinois
WCMY(AM)	70305	Ottawa, Illinois
WRKX(FM)	70304	Ottawa, Illinois
WJBD(AM)	70298	Salem, Illinois
WJBD-FM	70308	Salem, Illinois
WRLO-FM	432	Antigo, Wisconsin
WLJY(FM)	60004	Whiting, Wisconsin
WKCH(FM)	59406	Ft. Atkinson, Wisconsin
WOBT(AM)	49801	Rhineland, Wisconsin
WRHN(FM)	49800	Rhineland, Wisconsin
*WBDL(FM)	59232	Reedsburg, Wisconsin
*FM Translator W290AL	86124	Baraboo, Wisconsin
*WRDB(AM)	59233	Reedsburg, Wisconsin
WYTE(FM)	24444	Marshfield, Wisconsin
*WNFM(FM)	59234	Reedsburg, Wisconsin
WFAW(AM)	24446	Ft. Atkinson, Wisconsin
WSJY(FM)	24442	Ft. Atkinson, Wisconsin
FM Translator W277AC	24447	Watertown, Wisconsin
WGLX-FM	73054	Wisconsin Rapids, Wisconsin
KHUB(AM)	34550	Fremont, Nebraska
KFMT-FM	34549	Fremont, Nebraska
KLCH(FM)	89398	Lake City, Minnesota
KQWC(AM)	24660	Webster City, Iowa
KQWC-FM	24661	Webster City, Iowa
KWBG(AM)	22978	Boone, Iowa
KLGA(AM)	35429	Algona, Iowa
KLGA-FM	35428	Algona, Iowa
KTCH(AM)	35658	Wayne, Nebraska
KCTY(FM)	35659	Wayne, Nebraska
KHBT(FM)	10902	Humboldt, Iowa
KUVR(AM)	27178	Holdrege, Nebraska
KMTY(FM)	27174	Holdrege, Nebraska
KGFW(AM)	9933	Kearney, Nebraska
KQKY(FM)	9778	Kearney, Nebraska
KRNY(FM)	47999	Kearney, Nebraska
KODY(AM)	9931	North Platte, Nebraska
KXNP(FM)	9934	North Platte, Nebraska

KSYZ-FM	41878	Grand Island, Nebraska
KROR(FM)	26649	Hastings, Nebraska
KNEN	9954	Norfolk, Nebraska
WBCV(FM)	59608	Wausau, Wisconsin

*Being sold to Magnum Communications, Inc.

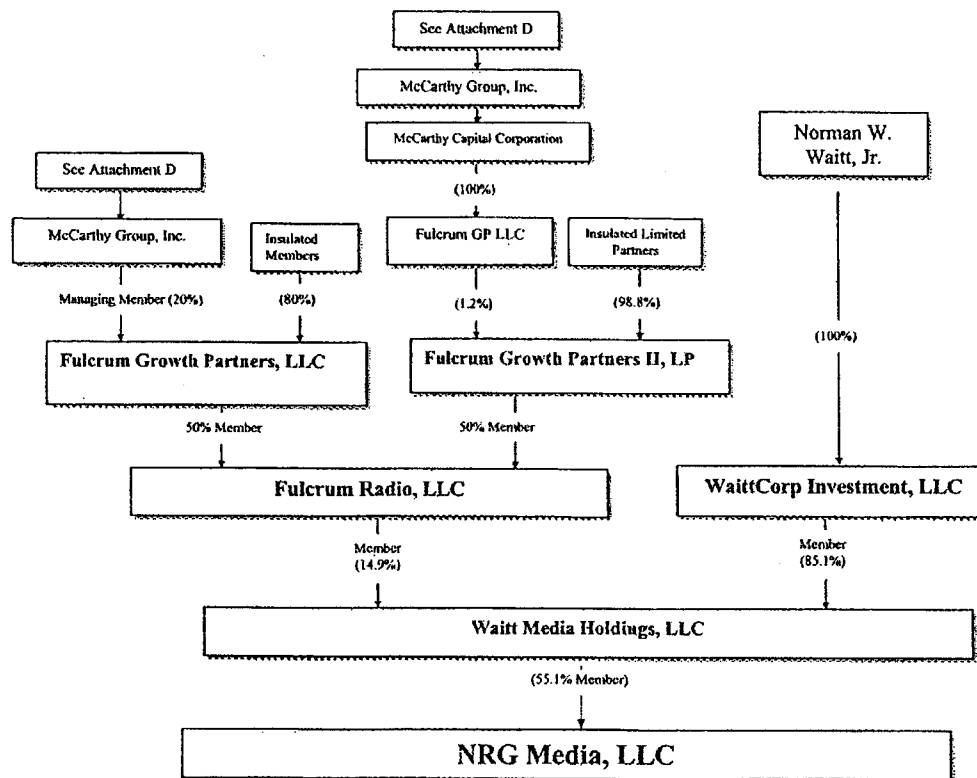
NRG License Sub, LLC

Attachment B

The following are members of Alta Communications VIII Managers, LLC:

Members	Equity of Interest
Timothy L. Dibble	20%
Brian W. McNeill	20%
William P. Egan	7.5%
Robert Emmert	6.25%
Patrick D. Brubaker	1.25%
Eileen McCarthy	5%
B. Lane MacDonald	6.25%
Philip L. Thompson	6.25%
Inuslated Members	27.5%

ATTACHMENT C



NRG License Sub, LLC

ATTACHMENT D

The following are 5% or more stockholders of McCarthy Group, Inc.:

<u>Stockholder</u>	<u>Percentage Interest Held</u>
Normal Investments II, LLC	11.66%
Michael R. McCarthy	13.63%
Kirchofer Limited Partnership	5.04%
Timmerman & Sons Feeding Co., Inc.	5.18%

NWW Investments, LLC is the 100% voting and equity owner of Normal II, LLC. Norman W. Waitt, Jr. is the 100% voting and equity owner of NWW Investments, LLC.

Kirchofer Limited Partnership's sole General Partner and 43.05% Limited Partner is Adam A. Kirchofer. The remaining 56.95% of Limited Partnership units are held by five insulated individuals.

The officers, directors and stockholders of Timmerman & Sons Feeding Co., Inc. are Gerald A. Timmerman (President, Director and 25% voting and equity ownership), Ronald W. Timmerman (Vice President, Director and 25% voting and equity ownership), Norman A. Timmerman (Vice President, Director and 25% voting and equity ownership) and James A. Timmerman (Secretary-Treasurer, Director and 25% voting and equity ownership).