

Exhibit E-14

Attached to this map is a computer generated contour map, which illustrates the predicted 60 dBu (1 mV/m) service contour for the proposed facility. As this map demonstrates, the entire community of license, Fayetteville, Arkansas, would lie within the predicted 60 dBu service contour. As a result, the proposed facility would comply with the provisions of Section 73.515 of the Commission's Rules.

KAYH.PRO
PROPOSED
Latitude: 36-10-48 N
Longitude: 094-05-10 W
ERP: 40.00 kW
Channel: 207
Frequency: 89.3 MHz
AMSL Height: 507.0 m
Elevation: 468.0 m
Horiz. Pattern: Directional
Vert. Pattern: No
Prop Model: FCC Method

Community of License
Fayetteville, Arkansas

D.L. Markley & Associates, Inc.

■ Proposed 60 dBu Service Contour

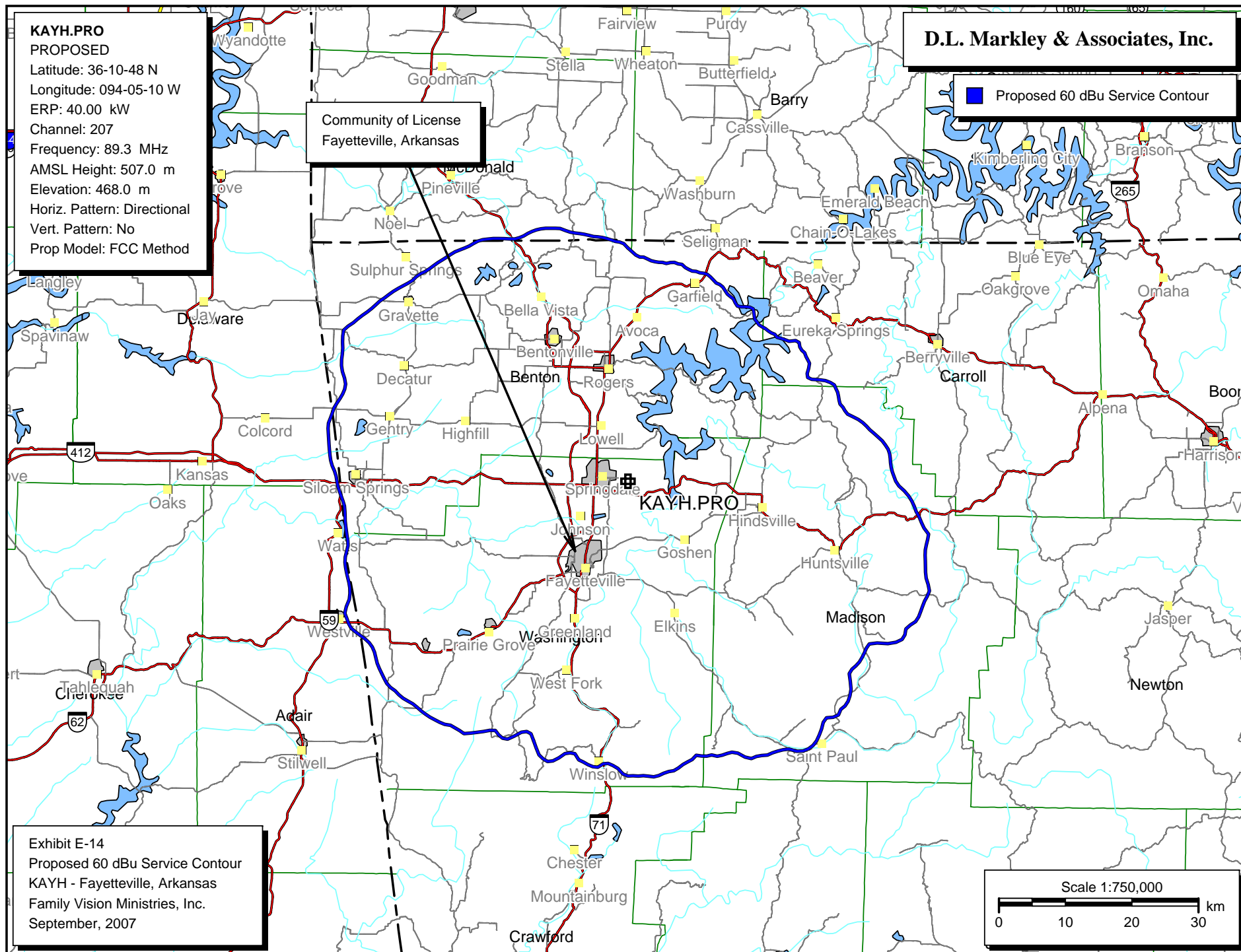


Exhibit E-14
Proposed 60 dBu Service Contour
KAYH - Fayetteville, Arkansas
Family Vision Ministries, Inc.
September, 2007

Scale 1:750,000

0 10 20 30 km