

MINOR CHANGE APPLICATION
VANDALIA MEDIA PARTNERS, LLC
W294AF FM TRANSLATOR STATION
CH 294D - 106.7 MHZ - 0.19 KW - ND
RIPLEY, WEST VIRGINIA
May 2015

EXHIBIT C1

Interference Study for W294AF

REFERENCE CH# 294D - 106.7 MHz, Pwr= 0.19 kW, HAAT= 133.5 M, COR= 361.5 M DISPLAY DATES
 38 58 05.7 N. Average Protected F(50-50)= 13.8 km DATA 05-12-15
 81 43 34.8 W. Omni-directional SEARCH 05-12-15

CH CITY	CALL	TYPE	ANT STATE	AZI. <--	DIST FILE #	LAT. LNG.	Pwr (kW) HAAT (M)	INT (km) COR (M)	PRO (km) LICENSEE	*IN* (Overlap in km)	*OUT*
294D Ripley	W294AF!	LIC	C WV	209.4 29.4	9.59 BLFT20140926ACC	38 53 35.0 81 46 51.0	0.250	39.0 304	11.4 Vandalia Media Partners, L	-44.5	-51.3
294L1 Athens	WEAK-LP	LIC	OH	315.7 135.4	54.25 BLL20050823ACL	39 18 59.0 82 10 02.0	0.100 30	278	Hobby Radio, Inc.	20.3	0.1
291A Parkersburg	WRZZ	LIC	CX WV	35.3 215.4	37.91 BLH20070913ABD	39 14 47.0 81 28 19.0	3.300 138	2.7 373	29.9 Burbach Of De, LLC	23.1	7.1
297B Miami	WKAZ-FM	LIC	CX WV	167.1 347.3	79.20 BMLH20060420ACP	38 16 25.0 81 31 27.0	23.500 206	6.2 525	68.4 West Virginia Radio Corpor	58.5	9.2
296A Belpre	WNUS	LIC	NCN OH	16.3 196.4	39.60 BLH19951011KA	39 18 36.0 81 35 49.0	4.700 107	2.7 336	27.5 Cc Licenses, Llc	23.5	11.1
293B Clarksburg	WWLW	LIC	ZCX WV	72.9 253.7	113.44 BLH20020226AAR	39 15 44.0 80 28 01.0	28.000 199	77.7 560	65.4 West Virginia Radio Corpor	23.1	21.2
292B1 Milton	WAMX	LIC	NC WV	219.3 39.0	66.30 BLH19970529KA	38 30 21.0 82 12 33.0	1.650 338	2.5 561	43.3 Capstar Tx Llc	48.1	21.6
240A Athens	WJKW	LIC	ZCN OH	315.1 134.9	42.11 BLH19980825KA	39 14 10.0 82 04 16.0	5.500 104	44.9 353	28.8 Christian Faith Broadcast,	9.5R	32.6M
294L1 Lizemores	WTUB-LP	CP	WV	146.2 326.5	86.70 BNPL20131113BNW	38 19 09.2 81 10 21.7	0.058 39	381	57.0 Clay County Services Unlim	34.3	
295L1 Saint Albans	WAXE-LP	CP	WV	193.3 13.2	64.47 BNPL20131113BOI	38 24 14.0 81 53 49.9	0.005 137	375	41.1 Coal Mountain Broadcasting	36.3	
294B1 Dublin	AL6931	RSV-A	OH	323.0 142.2	166.13 RM10557	40 09 20.0 82 54 12.0	25.000 100	110.9 385	41.9 Three States Broadcasting	39.5	66.2
294C3 Matewan	WVKM	LIC	NCN WV	195.2 14.9	155.93 BLH19940613KL	37 36 49.0 82 11 22.0	4.300 229	100.0 602	38.5 Three States Broadcasting	41.1	67.7

Terrain database is FCC NGDC 30 Sec, R= 73.215 qualifying spacings or FCC minimum spacings in KM, M= Margin in KM
 In & Out distances between contours are shown at closest points. Reference Zone= East Zone, Co to 3rd adjacent.
 All separation margins (if shown) include rounding. Call signs with exclamation marks need not be protected.
 Ant Column: (D= DA Standard, Z= DA 73.215, N= Not DA 73.215, _= Omni), Polarization (C,H,V,E), Beamtilt (Y,N,X)
 "*"affixed to 'IN' or 'OUT' values = site inside restricted contour.
 < = Station meets FCC minimum distance spacing for its class.

W294AF - Ripley, WV - Proposed

Latitude: 38-58-05.70 N - Longitude: 081-43-34.80 W
Channel: 294 - Frequency: 106.7 MHz
ERP: 0.19 kW - AMSL Height: 361.48 m

GRAHAM BROCK, INC.

BROADCAST TECHNICAL CONSULTANTS

WEAK-LP - Athens, OH - BLL20050823ACL

Latitude: 39-18-59 N - Longitude: 082-10-02 W
Channel: 294 - Frequency: 106.7 MHz
ERP: 0.10 kW - AMSL Height: 278.0 m

WEAK-LP

60 dBu - FCC 50/50

40 dBu - FCC 50/10

EXHIBIT C2

**MINOR CHANGE APPLICATION
VANDALIA MEDIA PARTNERS, LLC
W294AF FM TRANSLATOR STATION
CH 294D - 106.7 MHZ - 0.19 KW - ND
RIPLEY, WEST VIRGINIA
May 2015**

Scale 1:375,000

0 5 10 15 km

V-Soft Communications LLC ©

MINOR CHANGE APPLICATION
VANDALIA MEDIA PARTNERS, LLC
W294AF FM TRANSLATOR STATION
CH 294D - 106.7 MHZ - 0.19 KW - ND
RIPLEY, WEST VIRGINIA
May 2015

EXHIBIT C3

FMOVER Study for W294AF vs WEAK-LP

W294AF Proposed
Channel = 294D
Max ERP = 0.19 kW
RCAMSL = 361.48 M
N. Lat. 38 58 05.7
W. Lng. 81 43 34.8
Protected
60 dBu

WEAK-LP BLL20050823ACL
Channel = 294L1
Max ERP = 0.1 kW
RCAMSL = 278 M
N. Lat. 39 18 59.0
W. Lng. 82 10 02.0
Interfering
40 dBu

Terrain Data: FCC NGDC 30 Sec

Azimuth (degrees)	ERP (kW)	HAAT (m)	Dist (km)	Azimuth (degrees)	ERP (kW)	HAAT (m)	Dist (km)	Actual (dBu)	IX (km)
317.0	000.1900	0140.1	014.2	134.9	000.1000	0018.8	040.1	28.51	
318.0	000.1900	0141.6	014.3	134.5	000.1000	0018.8	040.0	28.54	
319.0	000.1900	0141.7	014.3	134.2	000.1000	0018.8	040.0	28.53	
320.0	000.1900	0143.7	014.4	133.8	000.1000	0018.8	039.9	28.56	
321.0	000.1900	0149.3	014.7	133.4	000.1000	0018.8	039.6	28.65	
322.0	000.1900	0155.8	015.1	132.9	000.1000	0018.7	039.3	28.76	
323.0	000.1900	0160.7	015.4	132.5	000.1000	0018.8	039.1	28.83	
324.0	000.1900	0164.0	015.5	132.1	000.1000	0019.0	038.9	28.87	
325.0	000.1900	0166.6	015.7	131.6	000.1000	0019.3	038.9	28.90	
326.0	000.1900	0168.0	015.8	131.2	000.1000	0019.7	038.9	28.90	
327.0	000.1900	0167.2	015.7	130.8	000.1000	0020.2	039.0	28.86	
328.0	000.1900	0164.5	015.6	130.5	000.1000	0020.6	039.2	28.79	
329.0	000.1900	0161.0	015.4	130.2	000.1000	0020.9	039.5	28.70	
330.0	000.1900	0157.7	015.2	129.9	000.1000	0021.0	039.7	28.62	
331.0	000.1900	0155.2	015.1	129.7	000.1000	0021.2	039.9	28.55	

MINOR CHANGE APPLICATION
VANDALIA MEDIA PARTNERS, LLC
W294AF FM TRANSLATOR STATION
CH 294D - 106.7 MHZ - 0.19 KW - ND
RIPLEY, WEST VIRGINIA
May 2015

EXHIBIT C4

FMOVER Study for WEAK-LP vs W294AF

WEAK-LP BLL20050823ACL
Channel = 294L1
Max ERP = 0.1 kW
RCAMSL = 278 M
N. Lat. 39 18 59.0
W. Lng. 82 10 02.0
Protected
60 dBu

W294AF Proposed
Channel = 294D
Max ERP = 0.19 kW
RCAMSL = 361.48 M
N. Lat. 38 58 05.7
W. Lng. 81 43 34.8
Interfering
40 dBu

Terrain Data: FCC NGDC 30 Sec

Azimuth (degrees)	ERP (kW)	HAAT (m)	Dist (km)	Azimuth (degrees)	ERP (kW)	HAAT (m)	Dist (km)	Actual (dBu)	IX (km)
075.0	000.1000	0046.3	007.0	322.4	000.1900	0158.2	051.2	39.47	
076.0	000.1000	0048.5	007.1	322.6	000.1900	0158.9	051.0	39.58	
077.0	000.1000	0051.6	007.4	322.8	000.1900	0159.7	050.8	39.70	
078.0	000.1000	0054.2	007.6	322.9	000.1900	0160.3	050.6	39.81	
079.0	000.1000	0055.6	007.7	322.9	000.1900	0160.5	050.4	39.88	
080.0	000.1000	0056.8	007.8	323.0	000.1900	0160.6	050.3	39.95	
081.0	000.1000	0056.4	007.7	322.9	000.1900	0160.2	050.1	39.97	
082.0	000.1000	0054.1	007.6	322.6	000.1900	0159.1	050.1	39.93	
083.0	000.1000	0049.9	007.2	322.2	000.1900	0157.1	050.2	39.81	
084.0	000.1000	0045.5	006.9	321.8	000.1900	0154.6	050.2	39.65	
085.0	000.1000	0040.0	006.4	321.3	000.1900	0151.3	050.4	39.42	
086.0	000.1000	0036.5	006.2	321.0	000.1900	0149.2	050.5	39.28	
087.0	000.1000	0035.2	006.1	320.8	000.1900	0148.0	050.4	39.24	
088.0	000.1000	0033.6	005.9	320.6	000.1900	0146.9	050.4	39.18	
089.0	000.1000	0032.0	005.8	320.4	000.1900	0145.7	050.4	39.12	
090.0	000.1000	0030.6	005.7	320.3	000.1900	0144.8	050.4	39.07	
091.0	000.1000	0029.8	005.6	320.1	000.1900	0144.3	050.4	39.06	
092.0	000.1000	0029.0	005.6	320.1	000.1900	0144.0	050.3	39.07	
093.0	000.1000	0028.2	005.6	320.0	000.1900	0143.7	050.2	39.08	
094.0	000.1000	0026.7	005.6	319.9	000.1900	0143.4	050.2	39.10	
095.0	000.1000	0025.0	005.6	319.8	000.1900	0143.1	050.1	39.11	
096.0	000.1000	0023.6	005.6	319.8	000.1900	0142.8	050.0	39.12	
097.0	000.1000	0021.7	005.6	319.7	000.1900	0142.5	050.0	39.13	
098.0	000.1000	0021.1	005.6	319.6	000.1900	0142.3	049.9	39.15	
099.0	000.1000	0022.3	005.6	319.5	000.1900	0142.1	049.8	39.16	
100.0	000.1000	0023.7	005.6	319.4	000.1900	0142.0	049.8	39.18	
101.0	000.1000	0024.8	005.6	319.3	000.1900	0141.9	049.7	39.20	
102.0	000.1000	0024.3	005.6	319.2	000.1900	0141.8	049.6	39.22	
103.0	000.1000	0023.2	005.6	319.1	000.1900	0141.7	049.6	39.23	
104.0	000.1000	0021.7	005.6	319.0	000.1900	0141.7	049.5	39.25	
105.0	000.1000	0021.0	005.6	319.0	000.1900	0141.7	049.5	39.27	
106.0	000.1000	0021.2	005.6	318.9	000.1900	0141.7	049.4	39.30	
107.0	000.1000	0021.4	005.6	318.8	000.1900	0141.7	049.4	39.32	
108.0	000.1000	0021.4	005.6	318.7	000.1900	0141.7	049.3	39.34	
109.0	000.1000	0020.3	005.6	318.6	000.1900	0141.7	049.3	39.36	
110.0	000.1000	0018.3	005.6	318.5	000.1900	0141.8	049.2	39.38	

MINOR CHANGE APPLICATION
VANDALIA MEDIA PARTNERS, LLC
W294AF FM TRANSLATOR STATION
CH 294D - 106.7 MHZ - 0.19 KW - ND
RIPLEY, WEST VIRGINIA
May 2015

EXHIBIT C4 (continued)

FMOVER Study for WEAK-LP vs W294AF

WEAK-LP BLL20050823ACL
Channel = 294L1
Max ERP = 0.1 kW
RCAMSL = 278 M
N. Lat. 39 18 59.0
W. Lng. 82 10 02.0
Protected
60 dBu

W294AF Proposed
Channel = 294D
Max ERP = 0.19 kW
RCAMSL = 361.48 M
N. Lat. 38 58 05.7
W. Lng. 81 43 34.8
Interfering
40 dBu

Terrain Data: FCC NGDC 30 Sec

Azimuth (degrees)	ERP (kW)	HAAT (m)	Dist (km)	Azimuth (degrees)	ERP (kW)	HAAT (m)	Dist (km)	Actual (dBu)	IX (km)
111.0	000.1000	0016.0	005.6	318.4	000.1900	0141.8	049.2	39.40	
112.0	000.1000	0014.7	005.6	318.3	000.1900	0141.8	049.1	39.41	
113.0	000.1000	0014.9	005.6	318.2	000.1900	0141.7	049.1	39.43	
114.0	000.1000	0015.8	005.6	318.1	000.1900	0141.7	049.0	39.44	
115.0	000.1000	0018.1	005.6	317.9	000.1900	0141.6	049.0	39.45	
116.0	000.1000	0021.3	005.6	317.8	000.1900	0141.6	049.0	39.46	
117.0	000.1000	0025.2	005.6	317.7	000.1900	0141.5	048.9	39.47	
118.0	000.1000	0028.6	005.6	317.6	000.1900	0141.5	048.9	39.49	
119.0	000.1000	0030.3	005.7	317.5	000.1900	0141.3	048.8	39.50	
120.0	000.1000	0029.5	005.6	317.4	000.1900	0141.1	048.8	39.49	
121.0	000.1000	0027.1	005.6	317.3	000.1900	0140.8	048.8	39.49	
122.0	000.1000	0024.9	005.6	317.2	000.1900	0140.6	048.8	39.48	
123.0	000.1000	0023.6	005.6	317.1	000.1900	0140.3	048.8	39.48	
124.0	000.1000	0023.2	005.6	317.0	000.1900	0140.0	048.7	39.47	
125.0	000.1000	0023.0	005.6	316.8	000.1900	0139.8	048.7	39.47	
126.0	000.1000	0022.7	005.6	316.7	000.1900	0139.5	048.7	39.46	
127.0	000.1000	0022.4	005.6	316.6	000.1900	0139.2	048.7	39.45	
128.0	000.1000	0022.1	005.6	316.5	000.1900	0138.8	048.7	39.44	
129.0	000.1000	0021.6	005.6	316.4	000.1900	0138.5	048.7	39.43	
130.0	000.1000	0021.0	005.6	316.3	000.1900	0138.2	048.6	39.41	
131.0	000.1000	0020.0	005.6	316.2	000.1900	0137.8	048.6	39.40	
132.0	000.1000	0019.0	005.6	316.0	000.1900	0137.5	048.6	39.38	
133.0	000.1000	0018.7	005.6	315.9	000.1900	0137.2	048.6	39.37	
134.0	000.1000	0018.8	005.6	315.8	000.1900	0136.8	048.6	39.35	
135.0	000.1000	0018.8	005.6	315.7	000.1900	0136.5	048.6	39.34	
136.0	000.1000	0019.3	005.6	315.6	000.1900	0136.2	048.6	39.32	
137.0	000.1000	0020.6	005.6	315.5	000.1900	0136.0	048.6	39.31	
138.0	000.1000	0022.7	005.6	315.3	000.1900	0135.7	048.6	39.29	
139.0	000.1000	0025.0	005.6	315.2	000.1900	0135.5	048.6	39.28	
140.0	000.1000	0026.6	005.6	315.1	000.1900	0135.3	048.6	39.27	
141.0	000.1000	0027.0	005.6	315.0	000.1900	0135.2	048.6	39.25	
142.0	000.1000	0026.1	005.6	314.9	000.1900	0135.0	048.7	39.24	
143.0	000.1000	0024.3	005.6	314.8	000.1900	0134.8	048.7	39.22	
144.0	000.1000	0022.4	005.6	314.7	000.1900	0134.7	048.7	39.21	
145.0	000.1000	0021.6	005.6	314.5	000.1900	0134.6	048.7	39.20	

MINOR CHANGE APPLICATION
VANDALIA MEDIA PARTNERS, LLC
W294AF FM TRANSLATOR STATION
CH 294D - 106.7 MHZ - 0.19 KW - ND
RIPLEY, WEST VIRGINIA
May 2015

EXHIBIT C4 (continued)

FMOVER Study for WEAK-LP vs W294AF

WEAK-LP BLL20050823ACL
Channel = 294L1
Max ERP = 0.1 kW
RCAMSL = 278 M
N. Lat. 39 18 59.0
W. Lng. 82 10 02.0
Protected
60 dBu

W294AF Proposed
Channel = 294D
Max ERP = 0.19 kW
RCAMSL = 361.48 M
N. Lat. 38 58 05.7
W. Lng. 81 43 34.8
Interfering
40 dBu

Terrain Data: FCC NGDC 30 Sec

Azimuth (degrees)	ERP (kW)	HAAT (m)	Dist (km)	Azimuth (degrees)	ERP (kW)	HAAT (m)	Dist (km)	Actual (dBu)	IX (km)
146.0	000.1000	0022.3	005.6	314.4	000.1900	0134.5	048.7	39.19	
147.0	000.1000	0024.6	005.6	314.3	000.1900	0134.5	048.7	39.18	
148.0	000.1000	0027.9	005.6	314.2	000.1900	0134.4	048.8	39.16	
149.0	000.1000	0031.1	005.7	314.1	000.1900	0134.3	048.7	39.18	
150.0	000.1000	0033.1	005.9	313.9	000.1900	0134.2	048.6	39.23	
151.0	000.1000	0034.2	006.0	313.8	000.1900	0134.2	048.5	39.25	
152.0	000.1000	0035.1	006.0	313.6	000.1900	0134.1	048.5	39.26	
153.0	000.1000	0036.3	006.1	313.5	000.1900	0134.1	048.4	39.28	
154.0	000.1000	0037.5	006.3	313.3	000.1900	0134.1	048.4	39.30	
155.0	000.1000	0038.0	006.3	313.1	000.1900	0134.0	048.4	39.30	
156.0	000.1000	0037.6	006.3	313.0	000.1900	0134.0	048.4	39.27	
157.0	000.1000	0036.8	006.2	313.0	000.1900	0134.0	048.6	39.23	
158.0	000.1000	0035.9	006.1	312.9	000.1900	0134.0	048.7	39.18	
159.0	000.1000	0034.7	006.0	312.8	000.1900	0134.0	048.8	39.13	
160.0	000.1000	0033.4	005.9	312.8	000.1900	0134.0	048.9	39.07	
161.0	000.1000	0032.7	005.9	312.7	000.1900	0133.9	049.0	39.04	
162.0	000.1000	0032.5	005.8	312.6	000.1900	0133.9	049.1	39.01	
163.0	000.1000	0031.9	005.8	312.5	000.1900	0133.9	049.2	38.97	
164.0	000.1000	0030.6	005.7	312.5	000.1900	0133.9	049.3	38.92	
165.0	000.1000	0029.5	005.6	312.4	000.1900	0133.8	049.4	38.88	
166.0	000.1000	0029.7	005.6	312.3	000.1900	0133.8	049.5	38.85	
167.0	000.1000	0031.4	005.8	312.2	000.1900	0133.8	049.4	38.87	
168.0	000.1000	0033.4	005.9	312.0	000.1900	0133.7	049.4	38.89	
169.0	000.1000	0034.0	006.0	311.8	000.1900	0133.7	049.4	38.88	
170.0	000.1000	0033.8	005.9	311.7	000.1900	0133.6	049.5	38.85	
171.0	000.1000	0034.2	006.0	311.6	000.1900	0133.6	049.5	38.83	
172.0	000.1000	0035.4	006.1	311.5	000.1900	0133.6	049.5	38.83	
173.0	000.1000	0036.4	006.2	311.3	000.1900	0133.5	049.5	38.83	
174.0	000.1000	0036.6	006.2	311.2	000.1900	0133.5	049.6	38.80	
175.0	000.1000	0036.5	006.2	311.1	000.1900	0133.5	049.7	38.77	
176.0	000.1000	0037.7	006.3	310.9	000.1900	0133.4	049.7	38.76	
177.0	000.1000	0039.6	006.4	310.7	000.1900	0133.4	049.6	38.77	
178.0	000.1000	0039.0	006.4	310.7	000.1900	0133.4	049.8	38.73	
179.0	000.1000	0038.0	006.3	310.7	000.1900	0133.4	049.9	38.68	
180.0	000.1000	0037.6	006.3	310.6	000.1900	0133.4	050.0	38.63	

MINOR CHANGE APPLICATION
VANDALIA MEDIA PARTNERS, LLC
W294AF FM TRANSLATOR STATION
CH 294D - 106.7 MHZ - 0.19 KW - ND
RIPLEY, WEST VIRGINIA
May 2015

EXHIBIT C4 (continued)

FMOVER Study for WEAK-LP vs W294AF

WEAK-LP BLL20050823ACL
Channel = 294L1
Max ERP = 0.1 kW
RCAMSL = 278 M
N. Lat. 39 18 59.0
W. Lng. 82 10 02.0
Protected
60 dBu

W294AF Proposed
Channel = 294D
Max ERP = 0.19 kW
RCAMSL = 361.48 M
N. Lat. 38 58 05.7
W. Lng. 81 43 34.8
Interfering
40 dBu

Terrain Data: FCC NGDC 30 Sec

Azimuth (degrees)	ERP (kW)	HAAT (m)	Dist (km)	Azimuth (degrees)	ERP (kW)	HAAT (m)	Dist (km)	Actual (dBu)	IX (km)
181.0	000.1000	0039.6	006.4	310.4	000.1900	0133.3	050.0	38.64	
182.0	000.1000	0041.5	006.6	310.2	000.1900	0133.3	050.0	38.64	
183.0	000.1000	0043.5	006.7	309.9	000.1900	0133.2	050.0	38.64	
184.0	000.1000	0044.2	006.8	309.8	000.1900	0133.2	050.0	38.61	
185.0	000.1000	0043.8	006.8	309.8	000.1900	0133.2	050.1	38.57	
186.0	000.1000	0043.6	006.7	309.7	000.1900	0133.2	050.2	38.52	
187.0	000.1000	0044.1	006.8	309.6	000.1900	0133.2	050.3	38.49	
188.0	000.1000	0045.2	006.9	309.4	000.1900	0133.1	050.4	38.47	
189.0	000.1000	0045.5	006.9	309.3	000.1900	0133.1	050.5	38.43	
190.0	000.1000	0046.7	007.0	309.2	000.1900	0133.1	050.5	38.41	
191.0	000.1000	0048.6	007.1	309.0	000.1900	0133.0	050.6	38.39	
192.0	000.1000	0051.0	007.3	308.7	000.1900	0133.0	050.6	38.38	
193.0	000.1000	0051.6	007.4	308.6	000.1900	0133.0	050.7	38.34	
194.0	000.1000	0049.7	007.2	308.7	000.1900	0133.0	050.9	38.27	

W294AF - Ripley, WV - Proposed

Latitude: 38-58-05.70 N - Longitude: 081-43-34.80 W
Channel: 294 - Frequency: 106.7 MHz
ERP: 0.19 kW - AMSL Height: 361.48 m

WRZZ - Parkersburg, WV - BLH20070913ABD

Latitude: 39-14-47 N - Longitude: 081-28-19 W
Channel: 291 - Frequency: 106.1 MHz
ERP: 3.30 kW - AMSL Height: 373.0 m

GRAHAM BROCK, INC.

BROADCAST TECHNICAL CONSULTANTS

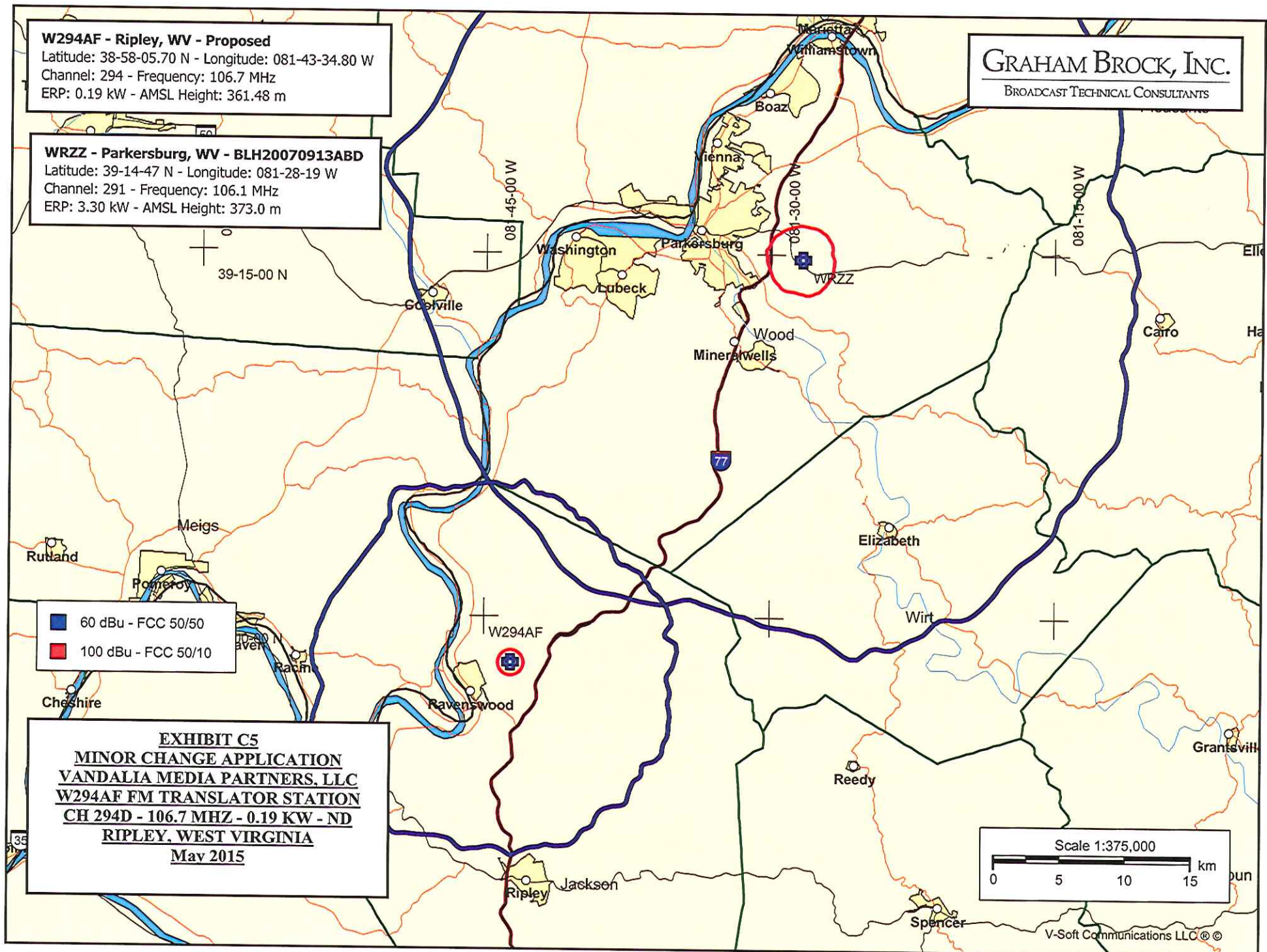


EXHIBIT C5

MINOR CHANGE APPLICATION
VANDALIA MEDIA PARTNERS, LLC
W294AF FM TRANSLATOR STATION
CH 294D - 106.7 MHZ - 0.19 KW - ND
RIPLEY, WEST VIRGINIA
May 2015

MINOR CHANGE APPLICATION
VANDALIA MEDIA PARTNERS, LLC
W294AF FM TRANSLATOR STATION
CH 294D - 106.7 MHZ - 0.19 KW - ND
RIPLEY, WEST VIRGINIA
May 2015

EXHIBIT C6

FMOVER Study for W294AF vs WRZZ

W294AF Proposed
Channel = 294D
Max ERP = 0.19 kW
RCAMSL = 361.48 M
N. Lat. 38 58 05.7
W. Lng. 81 43 34.8
Protected
60 dBu

WRZZ BLH20070913ABD
Channel = 291A
Max ERP = 3.3 kW
RCAMSL = 373 M
N. Lat. 39 14 47.0
W. Lng. 81 28 19.0
Interfering
100 dBu

Terrain Data: FCC NGDC 30 Sec

Azimuth (degrees)	ERP (kW)	HAAT (m)	Dist (km)	Azimuth (degrees)	ERP (kW)	HAAT (m)	Dist (km)	Actual (dBu)	IX (km)
013.0	000.1900	0119.0	013.1	226.3	003.3000	0143.3	026.3	63.07	
014.0	000.1900	0119.6	013.1	225.9	003.3000	0143.3	026.1	63.17	
015.0	000.1900	0118.7	013.1	225.4	003.3000	0143.3	026.1	63.22	
016.0	000.1900	0117.6	013.0	225.0	003.3000	0143.2	026.0	63.26	
017.0	000.1900	0116.4	012.9	224.4	003.3000	0143.2	025.9	63.29	
018.0	000.1900	0114.2	012.8	223.9	003.3000	0143.2	026.0	63.29	
019.0	000.1900	0111.1	012.7	223.3	003.3000	0143.8	026.0	63.29	
020.0	000.1900	0109.5	012.6	222.8	003.3000	0144.7	026.0	63.35	
021.0	000.1900	0109.6	012.6	222.3	003.3000	0145.6	025.9	63.46	
022.0	000.1900	0109.1	012.5	221.8	003.3000	0146.5	025.9	63.56	
023.0	000.1900	0106.3	012.4	221.3	003.3000	0147.5	025.9	63.57	
024.0	000.1900	0103.0	012.2	220.7	003.3000	0148.5	026.1	63.55	
025.0	000.1900	0101.9	012.1	220.2	003.3000	0149.3	026.1	63.60	
026.0	000.1900	0103.3	012.2	219.8	003.3000	0150.1	025.9	63.74	
027.0	000.1900	0104.8	012.3	219.4	003.3000	0150.7	025.8	63.87	
028.0	000.1900	0104.8	012.3	218.9	003.3000	0151.5	025.8	63.95	
029.0	000.1900	0103.9	012.3	218.4	003.3000	0152.4	025.8	64.00	
030.0	000.1900	0102.7	012.2	217.9	003.3000	0153.0	025.8	64.01	
031.0	000.1900	0101.7	012.1	217.5	003.3000	0153.4	025.8	64.01	
032.0	000.1900	0100.7	012.1	217.0	003.3000	0153.5	025.9	64.00	
033.0	000.1900	0099.0	012.0	216.5	003.3000	0153.6	026.0	63.94	
034.0	000.1900	0097.1	011.9	216.0	003.3000	0153.7	026.1	63.88	
035.0	000.1900	0096.1	011.8	215.6	003.3000	0153.7	026.1	63.85	
036.0	000.1900	0096.4	011.8	215.1	003.3000	0153.8	026.1	63.87	
037.0	000.1900	0097.2	011.9	214.7	003.3000	0154.1	026.1	63.91	
038.0	000.1900	0097.5	011.9	214.2	003.3000	0154.5	026.0	63.94	
039.0	000.1900	0096.8	011.9	213.8	003.3000	0154.7	026.1	63.91	
040.0	000.1900	0094.8	011.7	213.3	003.3000	0154.7	026.2	63.82	
041.0	000.1900	0092.6	011.6	212.9	003.3000	0154.6	026.4	63.70	
042.0	000.1900	0091.1	011.5	212.5	003.3000	0154.3	026.5	63.60	
043.0	000.1900	0089.3	011.4	212.2	003.3000	0153.8	026.7	63.48	
044.0	000.1900	0087.3	011.3	211.8	003.3000	0153.4	026.8	63.35	
045.0	000.1900	0085.9	011.2	211.4	003.3000	0152.7	026.9	63.23	
046.0	000.1900	0085.5	011.2	211.0	003.3000	0152.0	027.0	63.13	
047.0	000.1900	0085.6	011.2	210.6	003.3000	0151.1	027.1	63.05	
048.0	000.1900	0086.9	011.3	210.2	003.3000	0150.2	027.0	63.00	

MINOR CHANGE APPLICATION
VANDALIA MEDIA PARTNERS, LLC
W294AF FM TRANSLATOR STATION
CH 294D - 106.7 MHZ - 0.19 KW - ND
RIPLEY, WEST VIRGINIA
May 2015

EXHIBIT C7

FMOVER Study for WRZZ vs W294AF

WRZZ BLH20070913ABD
Channel = 291A
Max ERP = 3.3 kW
RCAMSL = 373 M
N. Lat. 39 14 47.0
W. Lng. 81 28 19.0
Protected
60 dBu

W294AF Proposed
Channel = 294D
Max ERP = 0.19 kW
RCAMSL = 361.48 M
N. Lat. 38 58 05.7
W. Lng. 81 43 34.8
Interfering
100 dBu

Terrain Data: FCC NGDC 30 Sec

Azimuth (degrees)	ERP (kW)	HAAT (m)	Dist (km)	Azimuth (degrees)	ERP (kW)	HAAT (m)	Dist (km)	Actual (dBu)	IX (km)
200.0	003.3000	0131.5	027.8	069.1	000.1900	0108.2	013.3	58.86	
201.0	003.3000	0135.5	028.2	068.9	000.1900	0107.8	012.7	59.65	
202.0	003.3000	0138.3	028.5	068.2	000.1900	0107.2	012.2	60.36	
203.0	003.3000	0139.9	028.6	066.9	000.1900	0106.4	011.7	60.98	
204.0	003.3000	0141.3	028.7	065.5	000.1900	0105.3	011.3	61.57	
205.0	003.3000	0142.8	028.9	064.0	000.1900	0102.3	010.9	62.02	
206.0	003.3000	0144.0	029.0	062.2	000.1900	0099.5	010.5	62.46	
207.0	003.3000	0144.9	029.1	060.2	000.1900	0100.0	010.1	63.12	
208.0	003.3000	0146.0	029.1	058.0	000.1900	0098.6	009.8	63.62	
209.0	003.3000	0147.5	029.3	055.7	000.1900	0099.1	009.4	64.34	
210.0	003.3000	0149.7	029.5	053.4	000.1900	0096.5	009.0	64.86	
211.0	003.3000	0152.0	029.7	050.8	000.1900	0092.4	008.6	65.21	
212.0	003.3000	0153.7	029.9	047.7	000.1900	0086.4	008.3	65.21	
213.0	003.3000	0154.6	029.9	044.3	000.1900	0086.8	008.1	65.65	
214.0	003.3000	0154.6	029.9	040.7	000.1900	0093.3	008.0	66.47	
215.0	003.3000	0153.9	029.9	036.9	000.1900	0097.1	008.1	66.79	
216.0	003.3000	0153.7	029.9	033.2	000.1900	0098.6	008.1	66.88	
217.0	003.3000	0153.5	029.8	029.6	000.1900	0103.2	008.1	67.18	
218.0	003.3000	0152.9	029.8	026.0	000.1900	0103.3	008.3	66.91	
219.0	003.3000	0151.4	029.6	022.8	000.1900	0106.8	008.5	66.68	
220.0	003.3000	0149.7	029.5	019.9	000.1900	0109.5	008.8	66.29	
221.0	003.3000	0148.0	029.3	017.3	000.1900	0116.0	009.2	66.12	
222.0	003.3000	0146.2	029.2	014.9	000.1900	0118.9	009.5	65.64	
223.0	003.3000	0144.3	029.0	012.7	000.1900	0118.8	009.9	64.91	
224.0	003.3000	0143.2	028.9	010.6	000.1900	0119.4	010.3	64.34	
225.0	003.3000	0143.2	028.9	008.3	000.1900	0118.8	010.6	63.80	
226.0	003.3000	0143.3	028.9	006.1	000.1900	0125.7	010.9	63.76	
227.0	003.3000	0143.4	028.9	004.2	000.1900	0134.6	011.2	63.82	
228.0	003.3000	0143.9	029.0	002.2	000.1900	0129.8	011.5	62.99	
229.0	003.3000	0145.0	029.1	000.1	000.1900	0123.5	011.8	62.09	
230.0	003.3000	0145.9	029.1	358.3	000.1900	0126.2	012.2	61.77	
231.0	003.3000	0146.9	029.2	356.5	000.1900	0128.9	012.5	61.44	
232.0	003.3000	0147.6	029.3	355.0	000.1900	0131.9	012.9	61.11	
233.0	003.3000	0147.9	029.3	353.7	000.1900	0132.4	013.3	60.58	
234.0	003.3000	0147.6	029.3	352.7	000.1900	0132.7	013.8	60.01	
235.0	003.3000	0147.0	029.2	351.9	000.1900	0132.8	014.3	59.44	
236.0	003.3000	0146.3	029.2	351.2	000.1900	0132.7	014.7	58.88	
237.0	003.3000	0145.8	029.1	350.6	000.1900	0132.7	015.2	58.54	

W294AF - Ripley, WV - Proposed

Latitude: 38-58-05.70 N - Longitude: 081-43-34.80 W
Channel: 294 - Frequency: 106.7 MHz
ERP: 0.19 kW - AMSL Height: 361.48 m

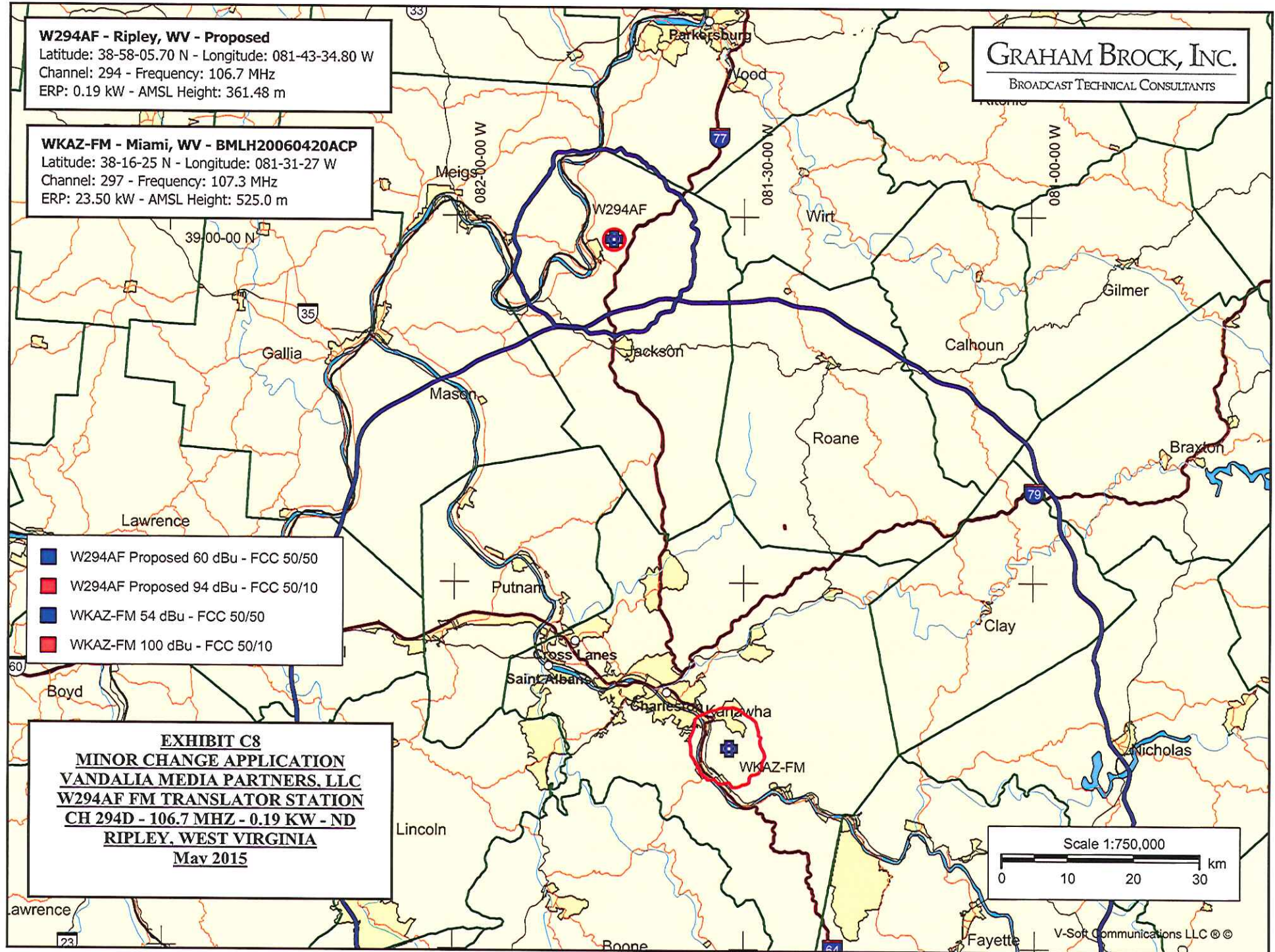
WKAZ-FM - Miami, WV - BMLH20060420ACP

Latitude: 38-16-25 N - Longitude: 081-31-27 W
Channel: 297 - Frequency: 107.3 MHz
ERP: 23.50 kW - AMSL Height: 525.0 m

GRAHAM BROCK, INC.
BROADCAST TECHNICAL CONSULTANTS

- W294AF Proposed 60 dBu - FCC 50/50
- W294AF Proposed 94 dBu - FCC 50/10
- WKAZ-FM 54 dBu - FCC 50/50
- WKAZ-FM 100 dBu - FCC 50/10

EXHIBIT C8
MINOR CHANGE APPLICATION
VANDALIA MEDIA PARTNERS, LLC
W294AF FM TRANSLATOR STATION
CH 294D - 106.7 MHZ - 0.19 KW - ND
RIPLEY, WEST VIRGINIA
May 2015



MINOR CHANGE APPLICATION
VANDALIA MEDIA PARTNERS, LLC
W294AF FM TRANSLATOR STATION
CH 294D - 106.7 MHZ - 0.19 KW - ND
RIPLEY, WEST VIRGINIA
May 2015

EXHIBIT C9

FMOVER Study for W294AF vs WKAZ-FM

W294AF Proposed
Channel = 294D
Max ERP = 0.19 kW
RCAMSL = 361.48 M
N. Lat. 38 58 05.7
W. Lng. 81 43 34.8
Protected
60 dBu

WKAZ-FM BMLH20060420ACP
Channel = 297B
Max ERP = 23.5 kW
RCAMSL = 525 M
N. Lat. 38 16 25.0
W. Lng. 81 31 27.0
Interfering
100 dBu

Terrain Data: FCC NGDC 30 Sec

Azimuth (degrees)	ERP (kW)	HAAT (m)	Dist (km)	Azimuth (degrees)	ERP (kW)	HAAT (m)	Dist (km)	Actual (dBu)	IX (km)
148.0	000.1900	0121.4	013.2	351.0	023.5000	0266.0	066.9	59.01	
149.0	000.1900	0122.3	013.2	350.8	023.5000	0265.7	066.7	59.04	
150.0	000.1900	0124.1	013.3	350.6	023.5000	0265.3	066.6	59.09	
151.0	000.1900	0127.1	013.5	350.5	023.5000	0264.8	066.3	59.15	
152.0	000.1900	0131.2	013.7	350.4	023.5000	0264.4	066.1	59.23	
153.0	000.1900	0134.5	013.9	350.2	023.5000	0263.8	065.8	59.30	
154.0	000.1900	0135.5	013.9	350.0	023.5000	0263.1	065.7	59.32	
155.0	000.1900	0135.1	013.9	349.8	023.5000	0262.4	065.7	59.31	
156.0	000.1900	0134.9	013.9	349.6	023.5000	0261.6	065.6	59.30	
157.0	000.1900	0136.1	014.0	349.4	023.5000	0260.9	065.5	59.32	
158.0	000.1900	0139.2	014.2	349.2	023.5000	0260.3	065.3	59.37	
159.0	000.1900	0142.7	014.3	349.0	023.5000	0259.9	065.0	59.44	
160.0	000.1900	0145.0	014.5	348.8	023.5000	0259.6	064.9	59.49	
161.0	000.1900	0146.3	014.5	348.6	023.5000	0259.4	064.8	59.52	
162.0	000.1900	0147.0	014.6	348.4	023.5000	0259.3	064.7	59.54	
163.0	000.1900	0146.5	014.6	348.2	023.5000	0259.3	064.7	59.54	
164.0	000.1900	0145.6	014.5	348.0	023.5000	0259.4	064.7	59.53	
165.0	000.1900	0144.5	014.4	347.7	023.5000	0259.7	064.8	59.52	
166.0	000.1900	0143.4	014.4	347.5	023.5000	0259.9	064.8	59.52	
167.0	000.1900	0141.5	014.3	347.3	023.5000	0260.2	064.9	59.49	
168.0	000.1900	0139.8	014.2	347.1	023.5000	0260.4	065.0	59.46	
169.0	000.1900	0138.7	014.1	346.8	023.5000	0260.5	065.1	59.44	
170.0	000.1900	0139.5	014.2	346.6	023.5000	0260.6	065.1	59.46	
171.0	000.1900	0140.4	014.2	346.4	023.5000	0260.4	065.0	59.46	
172.0	000.1900	0140.0	014.2	346.2	023.5000	0260.3	065.1	59.44	
173.0	000.1900	0139.8	014.2	346.0	023.5000	0260.1	065.1	59.42	
174.0	000.1900	0140.2	014.2	345.8	023.5000	0260.0	065.1	59.41	
175.0	000.1900	0141.2	014.3	345.5	023.5000	0260.0	065.1	59.42	
176.0	000.1900	0142.9	014.4	345.3	023.5000	0259.8	065.1	59.43	
177.0	000.1900	0143.9	014.4	345.1	023.5000	0259.6	065.1	59.42	
178.0	000.1900	0146.4	014.5	344.8	023.5000	0259.4	065.0	59.44	
179.0	000.1900	0148.9	014.7	344.6	023.5000	0259.0	064.9	59.46	
180.0	000.1900	0148.0	014.6	344.4	023.5000	0258.6	065.0	59.40	
181.0	000.1900	0145.1	014.5	344.2	023.5000	0258.2	065.2	59.31	
182.0	000.1900	0142.2	014.3	344.0	023.5000	0257.7	065.5	59.21	
183.0	000.1900	0140.4	014.2	343.9	023.5000	0257.1	065.6	59.13	
184.0	000.1900	0138.9	014.1	343.7	023.5000	0256.5	065.8	59.05	

MINOR CHANGE APPLICATION
VANDALIA MEDIA PARTNERS, LLC
W294AF FM TRANSLATOR STATION
CH 294D - 106.7 MHZ - 0.19 KW - ND
RIPLEY, WEST VIRGINIA
May 2015

EXHIBIT C10

FMOVER Study for WKAZ-FM vs W294AF

WKAZ-FM BMLH20060420ACP
Channel = 297B
Max ERP = 23.5 kW
RCAMSL = 525 M
N. Lat. 38 16 25.0
W. Lng. 81 31 27.0
Protected
54 dBu

W294AF Proposed
Channel = 294D
Max ERP = 0.19 kW
RCAMSL = 361.48 M
N. Lat. 38 58 05.7
W. Lng. 81 43 34.8
Interfering
94 dBu

Terrain Data: FCC NGDC 30 Sec

Azimuth (degrees)	ERP (kW)	HAAT (m)	Dist (km)	Azimuth (degrees)	ERP (kW)	HAAT (m)	Dist (km)	Actual (dBu)	IX (km)
327.0	023.5000	0278.3	069.9	227.8	000.1900	0170.5	027.8	51.32	
328.0	023.5000	0276.4	069.8	227.1	000.1900	0169.0	026.6	52.01	
329.0	023.5000	0274.0	069.6	226.1	000.1900	0166.9	025.4	52.69	
330.0	023.5000	0271.9	069.4	225.0	000.1900	0164.8	024.3	53.38	
331.0	023.5000	0269.1	069.2	223.7	000.1900	0162.4	023.2	54.05	
332.0	023.5000	0267.1	069.0	222.3	000.1900	0160.5	022.1	54.76	
333.0	023.5000	0267.3	069.0	221.2	000.1900	0160.4	021.0	55.62	
334.0	023.5000	0268.6	069.1	220.2	000.1900	0161.1	019.8	56.58	
335.0	023.5000	0269.5	069.2	218.9	000.1900	0161.7	018.7	57.52	
336.0	023.5000	0269.8	069.2	217.2	000.1900	0162.6	017.6	58.46	
337.0	023.5000	0268.9	069.2	215.0	000.1900	0167.3	016.6	59.56	
338.0	023.5000	0265.6	068.9	211.8	000.1900	0161.6	015.8	59.94	
339.0	023.5000	0259.0	068.3	207.4	000.1900	0151.8	015.2	59.83	
340.0	023.5000	0251.6	067.7	202.5	000.1900	0142.8	014.8	59.53	
341.0	023.5000	0247.8	067.4	198.2	000.1900	0141.1	014.2	60.02	
342.0	023.5000	0249.5	067.5	194.5	000.1900	0148.6	013.4	61.50	
343.0	023.5000	0253.7	067.9	190.8	000.1900	0144.4	012.6	62.44	
344.0	023.5000	0257.6	068.2	186.4	000.1900	0138.4	011.8	63.22	
345.0	023.5000	0259.6	068.4	181.0	000.1900	0145.1	011.2	64.54	
346.0	023.5000	0260.1	068.4	175.0	000.1900	0141.2	010.9	64.78	
347.0	023.5000	0260.5	068.5	168.7	000.1900	0138.9	010.8	64.86	
348.0	023.5000	0259.4	068.4	162.4	000.1900	0146.9	010.9	65.18	
349.0	023.5000	0259.9	068.4	156.2	000.1900	0135.0	011.0	64.14	
350.0	023.5000	0263.1	068.7	149.9	000.1900	0123.9	011.1	63.25	
351.0	023.5000	0266.0	068.9	143.8	000.1900	0127.1	011.4	63.07	
352.0	023.5000	0265.7	068.9	138.7	000.1900	0129.6	012.0	62.26	
353.0	023.5000	0262.3	068.6	135.0	000.1900	0120.0	012.9	60.29	
354.0	023.5000	0258.0	068.2	132.1	000.1900	0119.7	014.0	58.92	
355.0	023.5000	0253.5	067.9	129.7	000.1900	0118.0	015.0	57.70	
356.0	023.5000	0252.0	067.8	127.0	000.1900	0113.0	016.0	56.53	
357.0	023.5000	0251.3	067.7	124.6	000.1900	0121.8	016.9	56.37	
358.0	023.5000	0251.0	067.7	122.4	000.1900	0125.2	017.9	55.80	
359.0	023.5000	0250.5	067.6	120.5	000.1900	0125.4	018.9	54.99	
000.0	023.5000	0250.8	067.7	118.7	000.1900	0121.7	019.9	53.94	
001.0	023.5000	0251.8	067.7	116.9	000.1900	0120.6	020.9	53.07	
002.0	023.5000	0252.8	067.8	115.4	000.1900	0121.1	022.0	52.30	
003.0	023.5000	0254.4	068.0	113.9	000.1900	0119.9	023.0	51.43	

MINOR CHANGE APPLICATION
VANDALIA MEDIA PARTNERS, LLC
W294AF FM TRANSLATOR STATION
CH 294D - 106.7 MHZ - 0.19 KW - ND
RIPLEY, WEST VIRGINIA
May 2015

EXHIBIT C11

North Latitude: 38° 58' 05.7"
West Longitude: 81° 43' 34.8"

HAAT and Distance to Contour,
FCC, FM 2-10 Mi, 51 pts Method - FCC 30 SEC

Azi.	AV EL	HAAT	ERP kW	dBk	Field	100-F1	94-F1	60-F5	40-F1
000	237.8	123.7	0.1900	-7.21	1.000	0.97	1.53	13.32	45.22
010	241.7	119.8	0.1900	-7.21	1.000	0.97	1.52	13.12	44.69
020	252.0	109.5	0.1900	-7.21	1.000	0.97	1.61	12.57	43.07
030	258.8	102.7	0.1900	-7.21	1.000	0.97	1.61	12.19	41.82
040	266.6	94.8	0.1900	-7.21	1.000	0.97	1.61	11.74	40.23
050	270.0	91.5	0.1900	-7.21	1.000	0.97	1.61	11.54	39.50
060	261.4	100.1	0.1900	-7.21	1.000	0.97	1.61	12.04	41.31
070	251.9	109.5	0.1900	-7.21	1.000	0.97	1.61	12.57	43.08
080	263.8	97.7	0.1900	-7.21	1.000	0.97	1.61	11.91	40.83
090	255.6	105.9	0.1900	-7.21	1.000	0.97	1.61	12.37	42.43
100	257.1	104.4	0.1900	-7.21	1.000	0.97	1.61	12.29	42.15
110	246.8	114.6	0.1900	-7.21	1.000	0.97	1.51	12.85	43.92
120	236.8	124.6	0.1900	-7.21	1.000	0.97	1.53	13.37	45.35
130	242.5	118.9	0.1900	-7.21	1.000	0.97	1.52	13.07	44.57
140	228.3	133.1	0.1900	-7.21	1.000	0.97	1.55	13.82	46.48
150	237.4	124.1	0.1900	-7.21	1.000	0.97	1.53	13.34	45.28
160	216.5	145.0	0.1900	-7.21	1.000	0.97	1.58	14.47	48.06
170	222.0	139.5	0.1900	-7.21	1.000	0.97	1.56	14.17	47.33
180	213.5	148.0	0.1900	-7.21	1.000	0.97	1.59	14.64	48.46
190	217.7	143.7	0.1900	-7.21	1.000	0.97	1.57	14.40	47.89
200	220.6	140.9	0.1900	-7.21	1.000	0.97	1.57	14.24	47.50
210	204.6	156.9	0.1900	-7.21	1.000	0.97	1.61	15.14	49.63
220	200.2	161.3	0.1900	-7.21	1.000	0.97	1.62	15.39	50.21
230	188.6	172.9	0.1900	-7.21	1.000	0.97	1.64	16.01	51.69
240	192.9	168.6	0.1900	-7.21	1.000	0.97	1.64	15.79	51.15
250	192.5	169.0	0.1900	-7.21	1.000	0.97	1.64	15.81	51.20
260	213.3	148.1	0.1900	-7.21	1.000	0.97	1.59	14.65	48.48
270	206.2	155.3	0.1900	-7.21	1.000	0.97	1.60	15.05	49.43
280	209.8	151.7	0.1900	-7.21	1.000	0.97	1.59	14.85	48.95
290	217.7	143.8	0.1900	-7.21	1.000	0.97	1.57	14.40	47.90
300	227.3	134.1	0.1900	-7.21	1.000	0.97	1.55	13.87	46.61
310	228.2	133.2	0.1900	-7.21	1.000	0.97	1.55	13.82	46.49
320	217.8	143.7	0.1900	-7.21	1.000	0.97	1.57	14.40	47.88
330	203.7	157.7	0.1900	-7.21	1.000	0.97	1.61	15.19	49.75
340	224.6	136.9	0.1900	-7.21	1.000	0.97	1.56	14.02	46.98
350	228.7	132.8	0.1900	-7.21	1.000	0.97	1.55	13.80	46.44

AMSL= 361.48