

DELAWDER COMMUNICATIONS, INC.

P.O. Box 1095
Ashburn, Virginia 20146-1095
(703) 299-9222

ENGINEERING REPORT

W265BG, North East (to Elkton), MD, Channel 265D Minor Change

ENGINEERING STATEMENT

Priority Radio, Inc. ("Applicant") submits this site move minor change for W265BG. It is herein proposed that W265BG operate as a fill-in FM translator to WSRV(AM); and a "Mattoon" Waiver Request is requested in order to permit the proposed re-location of W265BG to a transmitter site that is 16.8 kilometers distance from the current W265BG licensed site. With the Mattoon waiver, this proposal is a minor change pursuant to Section 74.1233(a) of the FCC Rules.

FILL-IN MAP

Figure EE1, attached, is a map showing that the FM translator's 60 dBu F50,50 contour is completed inside of the 2 mV/m daytime groundwave contour of WSRV(AM). Figure EE1 also demonstrates that the entire 60 dBu F50,50 contour is also located within the 40 km radius circle that is centered at the WSRV(AM) transmitter site.

Figure EE1 also shows that contour overlap exists between the licensed 60 dBu F50,50 contour and the proposed 40 dBu F50,10 contour of W265BG, thus, establishing that the distance move will qualify for the Mattoon waiver request.

CHANNEL STUDY

Attached as Figure EE-A is a channel study for the proposed channel 265D facility. All required protections are met by contour non-overlap pursuant to Section 74.1204.

CONTOUR NON-OVERLAP SHOWING

The service and interference contour distances that are listed on Figure EE-A use the worst-case (greatest) distance along any bearing for each facility. No contour overlap using this worst-case test means no possible contour overlap when applying Section 73.313 methodology.

Figures EE2 and EE3, attached, show non-overlap between the service contours of WRNB and WBEB from the corresponding interference contours of the proposed channel 265D facility. All contours were determined pursuant to Section 73.313 of the FCC Rules using a USGS 30 arc-second terrain database at one-degree radial intervals. WRNB and WBEB are adequately protected based on the non-contour overlap results.

JUNE 26, 2015

SECTION 74.1204 CHANNEL STUDY**PROJECT: ELKTON, MD, 265D FROM PROPOSED SITE****STUDY COORDINATES: N 39-35-40.0; W 75-47-46.0(N D-M-S; W D-M-S)**

Call Docket	Channel FacilityID	Class Service	Frequency ERP	Status DA?	City HAAT	State RCAMSL	Country RCAGL	File Number
Latitude	Longitude			ASRN	Dist(km)	Dist(mi)	Azimuth	
Licensee/Permittee								
WRNB	262 B	FM	100.3 MHz	LIC	MEDIA	PA	US	BLH-20030424ABN
-	25079		17. kW	DA	263. m	329. m	253. m	
N 40	2 36.00	W	75 14 33.00	1035183	68.78 km	42.74 mi	43.27°	
RADIO ONE LICENSES, LLC								
Protected Contour Dist: 68.0 km Prop 265D Interf Contour Dist: 1.5 km								
Result: -0.7 km SHORT (WORST-CASE STUDY); See Contour Non-overlap Showing								
W263CQ	263 D	FX	100.5 MHz	CP	WARWICK	MD	US	BNPFT-20130826ACH
-	154145		0.055 kW		61.9 m	71. m	54. m	
N 39 21	51.00	W	75 49 52.00	1232074	25.74 km	16.00 mi	186.70°	
HOPE CHRISTIAN CHURCH OF MARLTON, INC.								
Protected Contour Dist: 7.4 km Prop 265D Interf Contour Dist: 1.5 km								
Result: 16.8 km CLEAR (WORST-CASE STUDY)								
WZBA	264 B	FM	100.7 MHz	LIC	WESTMINSTER	MD	US	BLH-20081117ADX
-	59985		25. kW	DA	210. m	366. m	175. m	
N 39 26	50.00	W	76 46 48.00	1225570	86.17 km	53.54 mi	259.34°	
SHAMROCK COMMUNICATIONS, INC.								
Protected Contour Dist: 68.3 km Prop 265D Interf Contour Dist: 11.7 km								
Result: 6.2 km CLEAR (WORST-CASE STUDY)								
W265BG	265 D	FX	100.9 MHz	LIC	NORTH EAST	MD	US	BLFT-20051101AAY
-	141390		0.01 kW		115.7 m	177. m	70. m	
N 39 37	12.00	W	75 59 21.00	1061077	16.82 km	10.45 mi	279.81°	
PRIORITY RADIO, INC.								
NOTE: THIS IS THE STATION THAT IS BEING HEREIN MODIFIED								
WBEB	266 B	FM	101.1 MHz	LIC	PHILADELPHIA	PA	US	BMLH-20111216ABX
-	71382		14. kW		287. m	354. m	280. m	
N 40 2	19.00	W	75 14 14.00	1026755	68.72 km	42.70 mi	43.85°	
JERRY LEE BROADCASTING, LLC								
Protected Contour Dist: 69.2 km Prop 265D Interf Contour Dist: 11.7 km								
Result: -12.2 km SHORT (WORST-CASE STUDY); See Contour Non-overlap Showing								

Study Complete

FIGURE EE1: W265BG FILL-IN MAP

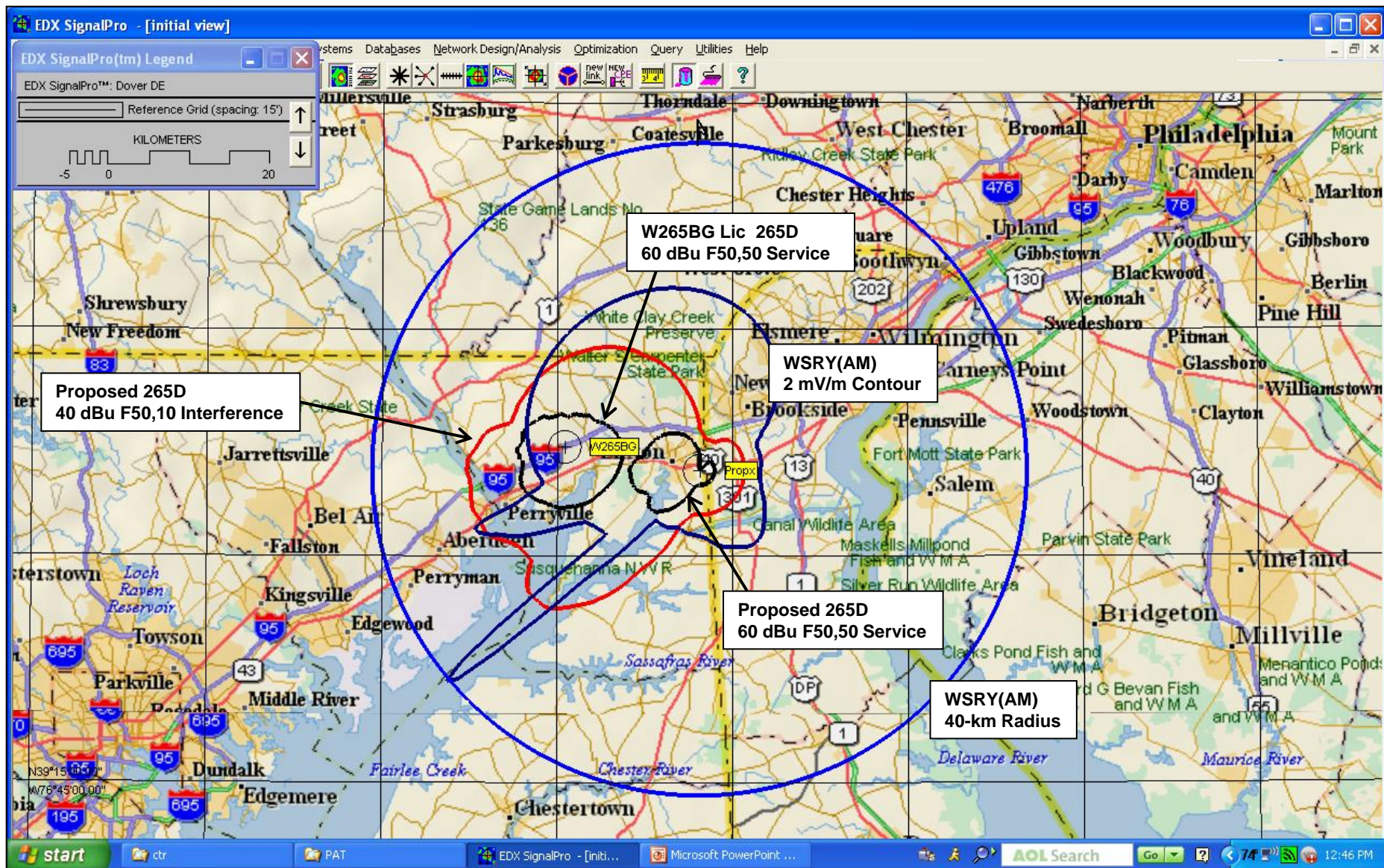


FIGURE EE2: 3rd Adjacent-channel Non-Contour Overlap to WRNB 262B Showing

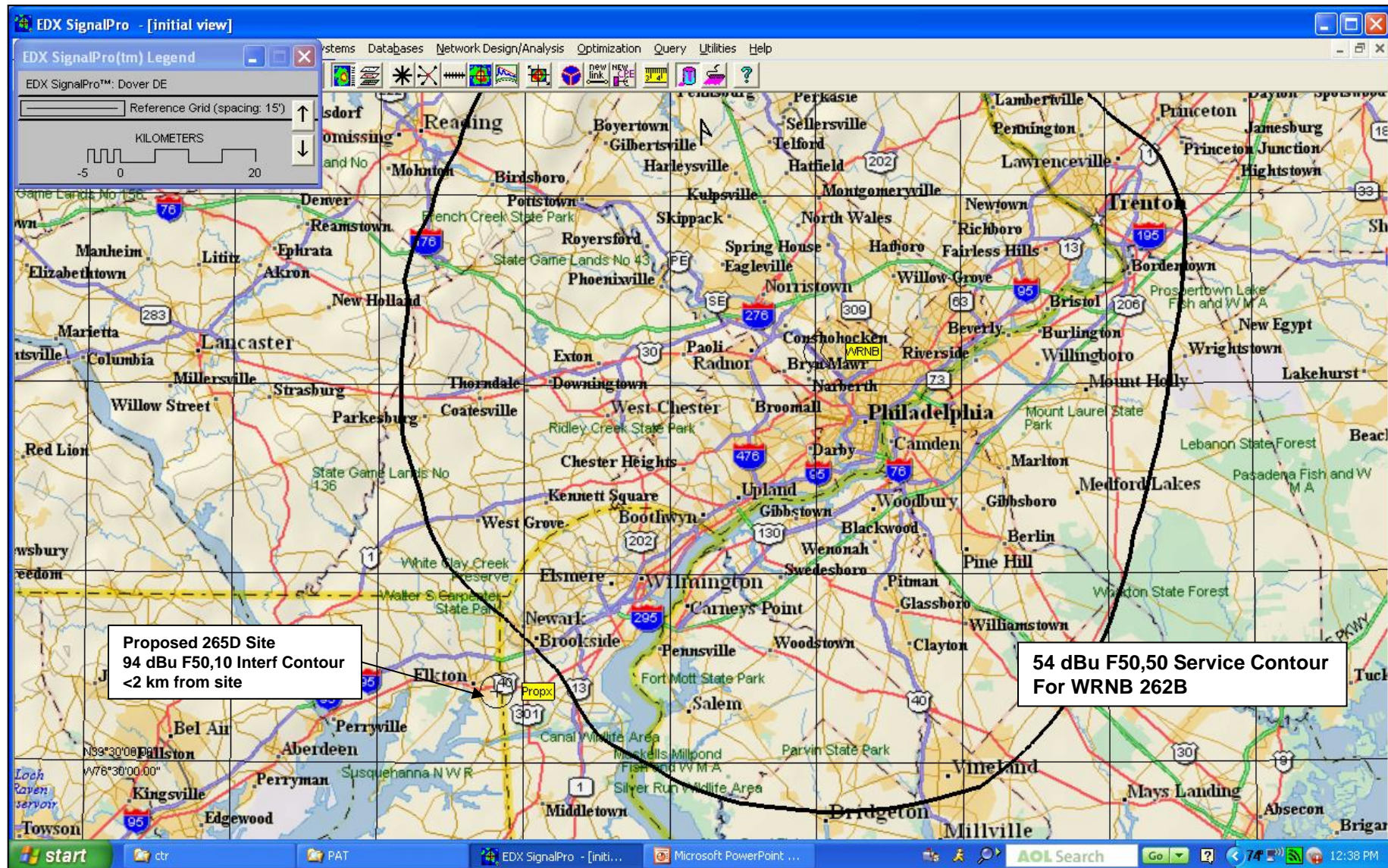


FIGURE EE3: First Adjacent-channel Non-Contour Overlap to WBEB 266B Showing

