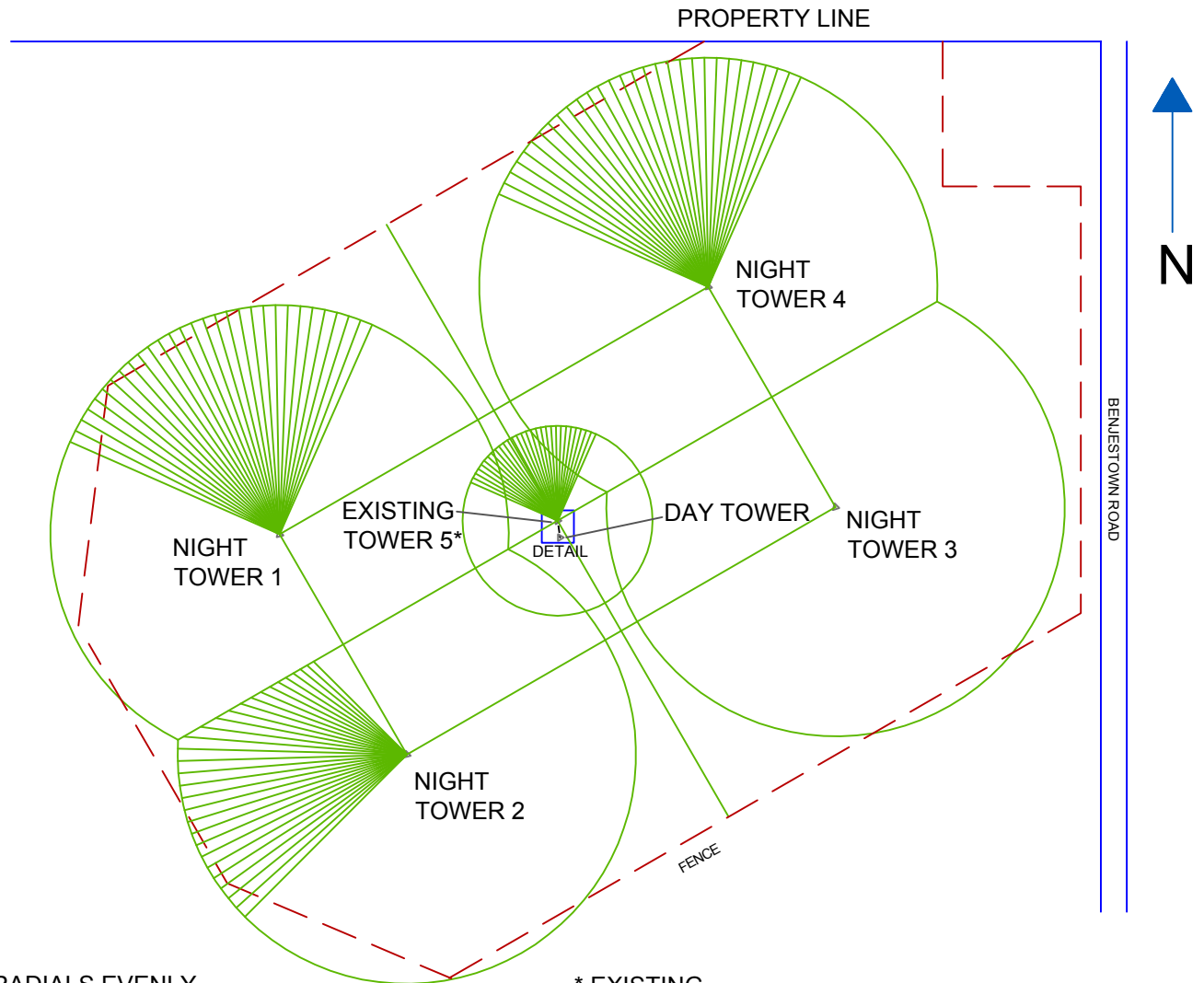
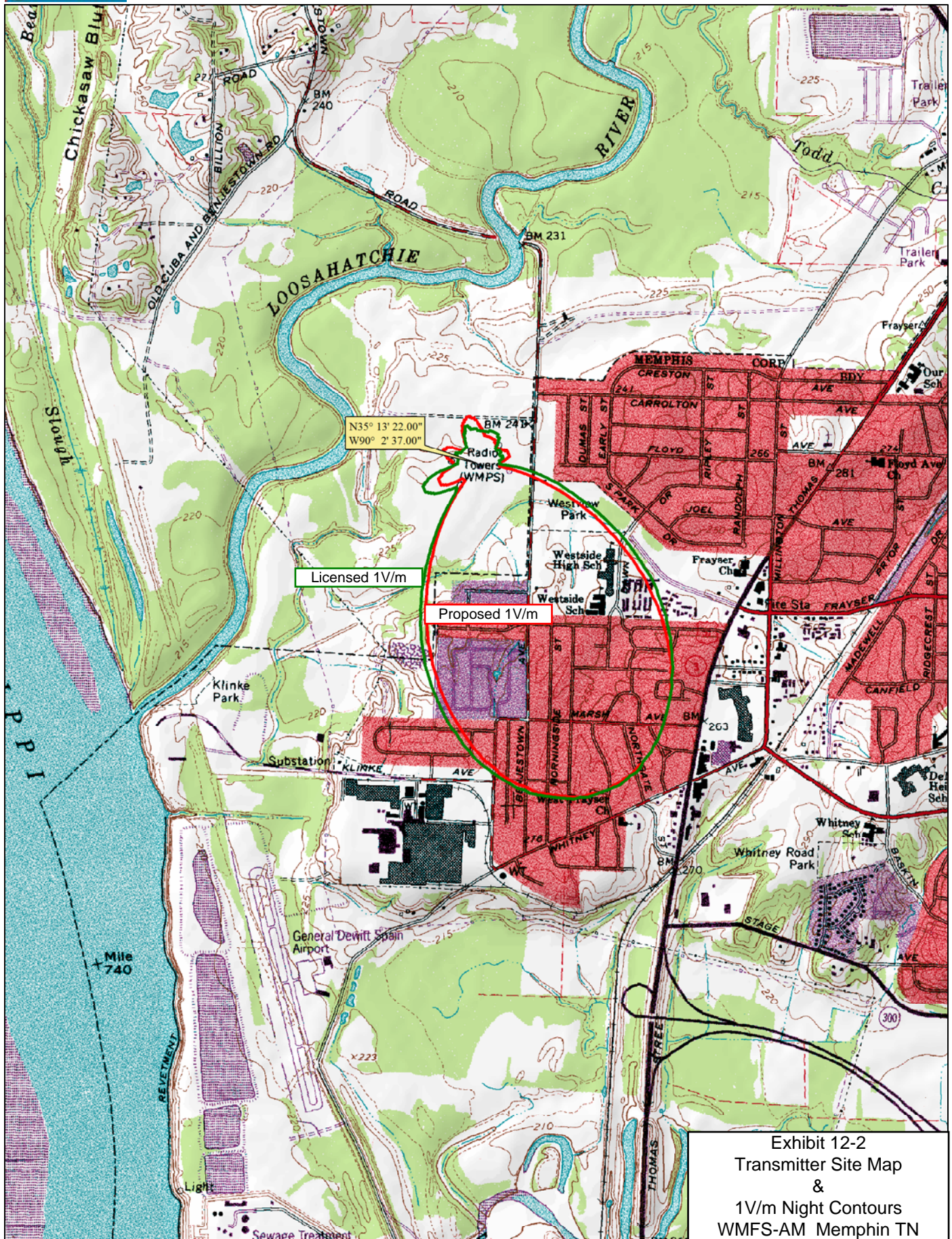


DETAIL



GROUND SYSTEM CONSISTS OF 240 RADIALS EVENLY SPACED AROUND TOWERS 1,2,3,4 WITH MINIMUM LENGTH OF 362ft, BONDED WHERE THEY INTERSECT, PLUS 120 RADIALS, 150ft IN LENGTH AROUND TOWER 5

* EXISTING TOWER 5 TO BE REMOVED





HATFIELD & DAWSON
CONSULTING ENGINEERS

EXHIBIT 12-3
TRANSMITTER SITE PHOTO

WMFS(AM) 680 kHz

MEMPHIS, TN

10/2010