

AMEND BPH-20090417AJP
GEORGIA EAGLE BROADCASTING, INC.
WDXQ-FM RADIO STATION
CH 298A - 107.5 MHZ - 4.0 KW (DA)
COCHRAN, GEORGIA
June 2009

EXHIBIT A

Clear Allocation Reference Site

This application seeks to relocate WDXQ-FM from Channel 244A to Channel 298A at Cochran, Georgia. From the proposed WDXQ-FM site, Channel 298A does not meet the minimum distance separation requirements to one other facility, as such, a designated allocation reference site has been identified.

As denoted on Exhibit A1, from the proposed allocation reference site, Channel 298A meets the Commission's minimum distance separation requirements to all licensed, proposed or applied for facilities. From the proposed allocation reference site, a maximum Class A would place a theoretical 70 dBu non-terrain impacted signal over 100% of the community of Cochran, Georgia, as shown on Exhibit A2. Further, as shown on Exhibit A3, the proposed site is not located offshore or on airport property and is, therefore, suitable for tower construction. Therefore, this proposal meets the Commission's allocation criteria.

AMEND BPH-20090417AJP
GEORGIA EAGLE BROADCASTING, INC.
WDXQ-FM RADIO STATION
CH 298A - 107.5 MHZ - 4.0 KW (DA)
COCHRAN, GEORGIA
June 2009

EXHIBIT A1

Allocation Study for Channel 298A Cochran, Georgia
Using Proposed Allocation Site as Reference

REFERENCE		DISPLAY DATES
32 28 43.0 N.	CLASS = A	DATA 06-20-09
83 21 57.0 W.	Current Spacings to 3rd Adj.	SEARCH 06-22-09
----- Channel 298 - 107.5 MHz -----		

Call	Channel	Location	Ant	Azi	Dist	FCC	Margin
Lat.	Lng.			Power	HAAT		
WDXQ-FM	LIC-Z 244A	Cochran		GA 177.0	7.4	10.0	-2.6
	32 24 43.0	83 21 42.0	ZC	6.000 kW	98 M		
	Georgia Eagle Broadcasting			BLH20000515ADJ			
WDXQ-FM	CP -N 298A	Cochran		GA 177.0	7.4	115.0	-107.6
	32 24 43.0	83 21 42.0	NCX	2.800 kW	101 M		
	Georgia Eagle Broadcasting			BPH20090417AJP			
WTIF-FM	LIC-N 298A	Omega		GA 189.2	115.0	115.0	0.01
	31 27 17.0	83 33 37.0	NCX	4.000 kW	122 M		
	Three Trees Communications			BLH20051202AAT			
WCGQ	LIC 297C0	Columbus		GA 270.0	158.9	152.0	6.9
	32 28 00.0	85 03 20.0	C	100.000 kW	308 M		
	Pmb Broadcasting, Llc			BMLH20070118ABW			
WFXM	LIC 296A	Gordon		GA 346.1	42.3	31.0	11.3
	32 50 55.0	83 28 29.0	C	3.000 kW	142 M		
	Wfxm-fm Radio, Llc			BLH20061016AEC			
WAMJ	CP -Z 298C2	Roswell		GA 334.3	177.5	166.0	11.5
	33 55 00.0	84 12 04.0	ZCX	45.000 kW	158 M		
	Roa Licenses, Llc			BMPH20081110AGN			
WDBN	LIC 300C3	Wrightsville		GA 74.4	58.2	42.0	16.2
	32 37 05.0	82 46 05.0	CX	25.000 kW	100 M		
	Dowdy Partners			BLH20081217AAH			
WEGC	LIC-N 299C3	Sasser		GA 225.4	131.4	89.0	42.4
	31 38 42.0	84 21 15.0	NCN	11.500 kW	95 M		
	Cumulus Licensing Llc			BLH19950825KC			
WAMJ	LIC 298C3	Roswell		GA 330.8	185.2	142.0	43.2
	33 55 54.0	84 20 43.0	CX	21.500 kW	110 M		
	Roa Licenses, Llc			BLH20051007ACN			

Graham Brock, Inc. - Broadcast Technical Consultants

Allocation Reference
Latitude: 32-28-43 N
Longitude: 083-21-57 W
ERP: 6.00 kW
Channel: 298A
Frequency: 107.5 MHz
AMSL Height: 199.12 m
Horiz. Pattern: Omni
Prop Model: None

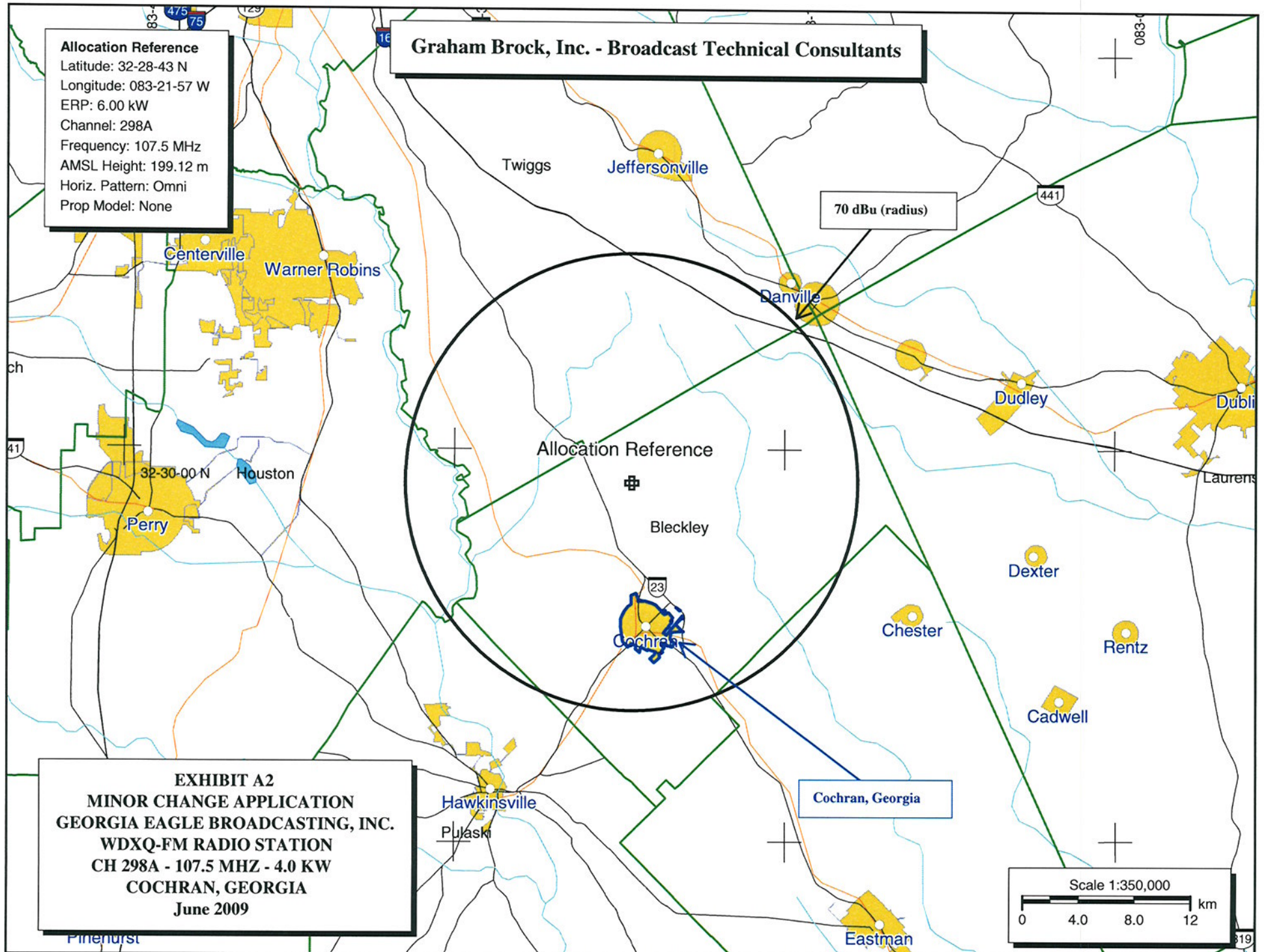


EXHIBIT A2
MINOR CHANGE APPLICATION
GEORGIA EAGLE BROADCASTING, INC.
WDXQ-FM RADIO STATION
CH 298A - 107.5 MHz - 4.0 KW
COCHRAN, GEORGIA
June 2009

GRAHAM BROCK, INC.

BROADCAST TECHNICAL CONSULTANTS

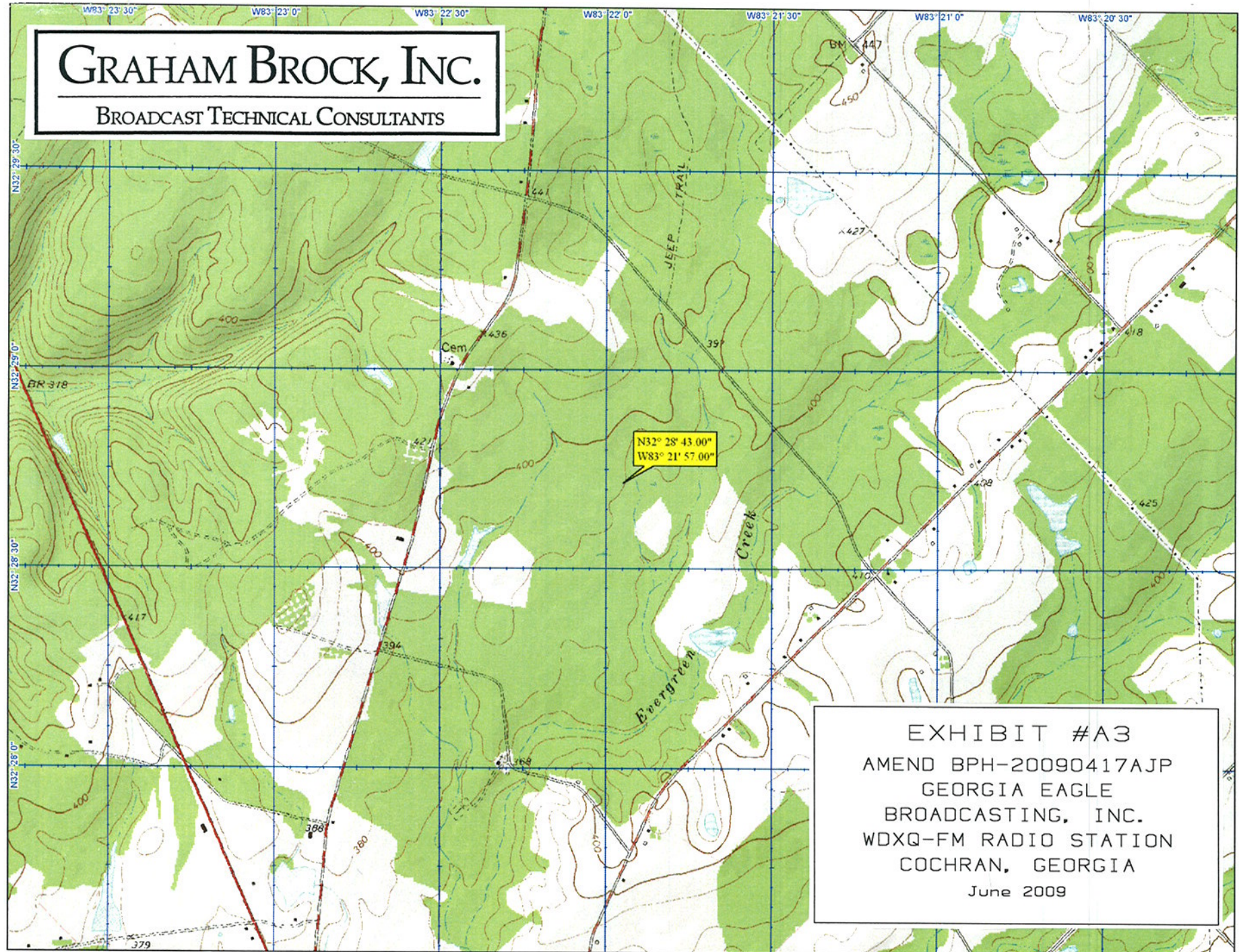
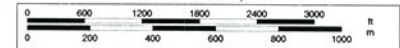


EXHIBIT #A3
AMEND BPH-20090417AJP
GEORGIA EAGLE
BROADCASTING, INC.
WDXQ-FM RADIO STATION
COCHRAN, GEORGIA
June 2009



Scale 1 : 24,000



1" = 2,000.0 ft

Data Zoom 13-1