

EXHIBIT 13

Waiver Request of Section 74.1204

Las Vegas NV K220JW 46 Watts ERP

Site Change

Calvary Chapel of Twin Falls, Inc.

December 2013

The proposed site is contained entirely inside the service contour of second-adjacent FM Stations KUNV.Lic and CP Las Vegas and KOMP Las Vegas

KUNV

The proposed site is contained entirely inside the service contours of second-adjacent FM Station KUNV.LIC, 218C1, 15KW and CP, 218C1, 12kW, Las Vegas, NV. The level of least arriving protected F(50,50) signal at the proposed transmitter site is the KUNV Licensed station at 76.9-dBu. Using the U/D method for calculating proposed interference, the interfering contour is 116.9-dBu. The interfering signal would, in the worst case at the maximum radial, extend 70 meters from the center of radiation proposed at 70 meters AGL. This interference contour will just touch the ground at the base of the tower. The closest building, other than the equipment shelters for the AM's located on the tower and within the gated locked fence that surrounds the tower, is more than 227 feet, as shown on the attached Google Earth Map. Also attached is a portion of the USGS Blue Diamond NE(NV) Quadrangle. Because there are no residences, businesses or major roadways that are within the interference contour, Calvary Chapel of Twin Falls, Inc. respectfully requests a waiver of the FM translator contour overlap regulations with respect to second-adjacent FM Station KUNV.LIC and its CP Las Vegas.

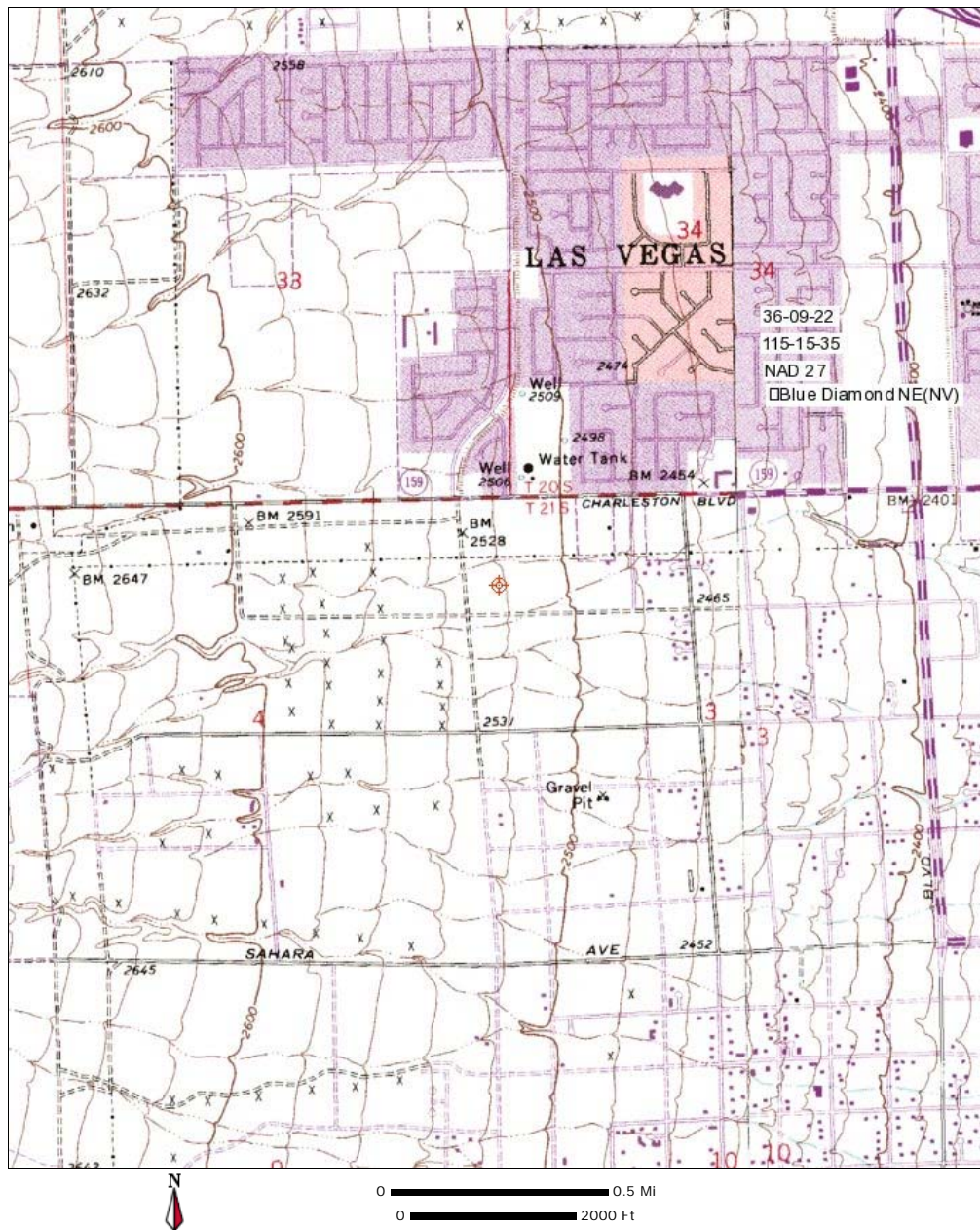
KOMP

The proposed site is contained entirely inside the service contour of second-adjacent FM Station KOMP, Channel 222C, 25kW, Las Vegas, NV. The level of least arriving protected F(50,50) signal at the proposed transmitter site is 88.1-dBu and using the U/D method for calculating proposed interference, the interfering contour is 128.1-dBu. The interfering signal would, in the worst case at the maximum radial, extend 19 meters from the center of radiation, which is proposed at 70 meters AGL. This interference contour does not touch the ground is begins at 51 meters AGL. Attached is a portion of the USGS Blue Diamond NE (NV) Quadrangle and a Google Earth Map showing this tower is not located in an area where there are tall buildings. Since there are no residences, businesses or major roadways that are close enough or tall enough to puncture the interference contour. Calvary Chapel of Twin Falls, Inc. respectfully requests a waiver of the FM translator contour overlap regulations with respect to second-adjacent FM Station KOMP Las Vegas.

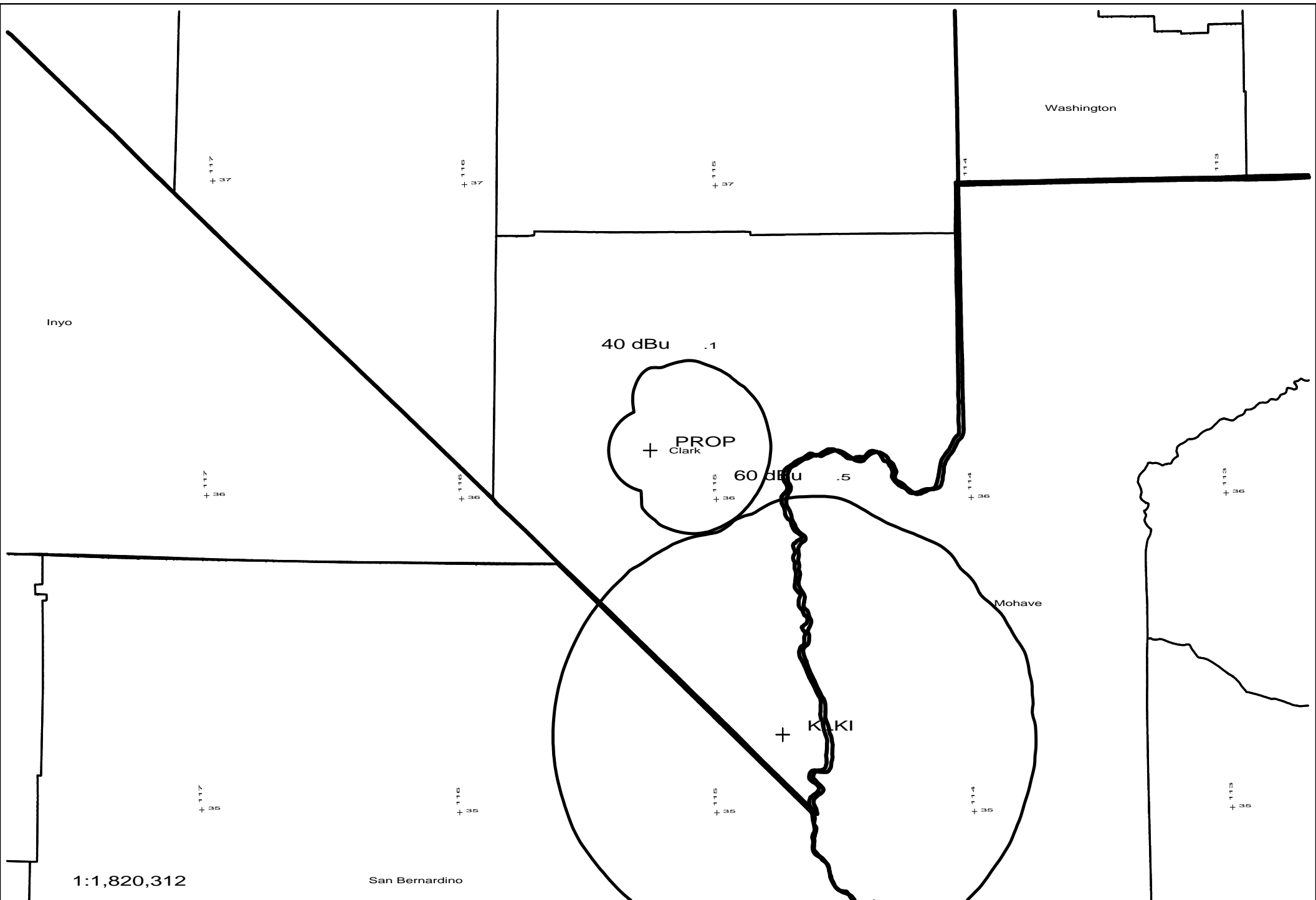
Las Vegas, NV K220JW Minor Modification											
Calvary Chapel Of Twin Falls, Inc.											
CH# 220D - 91.9 MHz, Pwr= 0.046 kW, HAAT= 33.3 M, COR= 839 M											
Average Protected F(50-50)= 4.85 km											
Omni-directional											
DISPLAY DATES											
DATA 12-10-13											
SEARCH 12-10-13											
CH CITY	CALL	TYPE STATE	ANT STATE	AZI <--	DI ST FILE #	LAT LNG	PWR(kW) HAAT(M)	INT(km) COR(M)	PRO(km) LICENSEE	*IN* (Overlap in km)	*OUT* (Overlap in km)
220C0 Dolan Springs	KLKI	LIC_CX AZ		155.0 335.3	110.99 BLED20100125ADU	35 14 56.0 114 44 34.0	30.000 692	168.8 1492	76.9 Educational Media Foundati	-67.5*	1.7
222C Las Vegas	KOMP	LIC_CN NV		225.8 45.6	30.29 BLH19960913KB	35 57 57.0 115 30 03.0	25.000 1124	10.0 2583	95.6 Lotus Broadcasting Corp.	15.6	-65.8*
220C Kingman	970822MA	VAC__N AZ		134.3 315.0	153.12	35 11 20.0 114 03 12.0	100.000 600	192.6 1681	88.3	-50.7*	27.4
218C1 Las Vegas	KUNV	CP_CX NV		140.1 320.3	30.41 BPED20130208ABR	35 56 45.2 115 02 35.3	12.000 588	6.5 1376	72.2 Board Of Regents, Nevada S	13.0	-42.3*
220D Las Vegas	K220JW	LIC_DV_ NV		84.3 264.5	23.68 BLFT20110207AAE	36 10 37.0 114 59 52.0	0.010 653	52.7 1237	14.4 Calvary Chapel Of Twin Fal	-41.8*	-33.3
218C1 Las Vegas	KUNV	LIC_CN NV		125.8 305.9	28.19 BLED19840906DM	36 00 28.0 115 00 20.0	15.000 335	6.4 1042	62.1 Board Of Regents, Nevada S	10.0	-34.4*
220D Las Vegas	K220JW	CP_V_ NV		113.2 293.3	19.85 BPFT20110308ABL	36 05 09.0 115 03 25.0	0.020 -103	12.0 530	3.7 Calvary Chapel Of Twin Fal	-4.4	-24.5
06ZT Las Vegas	KGHD-LP	LI_D_N NV		140.1 320.2	30.41 BLTVL20130904ABP	35 56 46.0 115 02 34.0	0.999 724	1.5 1355	38.7 Obidia Porras	40.2R	-9.8M
06 D Panaca	K06DM-D	LI_D_N NV		25.8 206.2	161.05 BLDTV20130123ADQ	37 27 34.0 114 27 57.0	0.060 892	1.5 2284	9.4 Lincoln County Tv District	130.5R	30.6M
06 T Newberry Springs	K06IQ	CP_D_N CA		221.6 40.8	195.19 BDFCDTV20120622ADG	34 50 03.0 116 40 45.0	0.208 69	1.5 618	38.7 County Of San Bernardino A	130.5R	64.7M
06NT Newberry Springs	K06IQ	LI_DHN CA		221.6 40.8	195.24 BLTTV5094	34 50 03.0 116 40 48.0	0.009 399	1.5 948	38.7 County Of San Bernardino A	130.5R	64.7M
06-T Victorville	KCIO-LP	LI_D_N CA		223.0 42.0	224.14 BLTVL20090306ACH	34 40 10.0 116 55 50.5	0.990 488	1.5 1418	38.7 Obidia Porras	130.5R	93.6M
06-T Victorville	KCIO-LP	AP_D_N CA		223.0 42.0	224.15 BLTVL20081027ABB	34 40 10.0 116 55 51.0	0.990 488	1.5 1418	38.7 Obidia Porras	130.5R	93.7M
06 D Laughlin	K06PG-D	LI_D_N NV		155.0 335.3	110.94 BLDTV20110217ACA	35 14 58.0 114 44 34.0	0.300 917	1.5 1484	9.4 Clark County School Distri	10.9R	100.0M
06+T Johannesburg	1273699	AP_D_N CA		248.4 67.0	232.57 BNPTVL20000829AXH	35 21 46.0 117 38 24.0	0.250 525	1.5 1291	38.7 Jeff Chang	130.5R	102.1M
06ZT Inyokern, Etc.	KLOA-LP	AP_D_N CA		251.8 70.4	232.96 BPTVL20130318AFK	35 28 41.0 117 41 58.0	0.749 587	1.5 1345	38.7 Robert D. Adelman	130.5R	102.5M
06-T Kanarraville, Etc.	K06KO	LI_D_N UT		50.4 231.6	235.46 BLTTV20061219ABF	37 29 16.0 113 12 18.0	0.150 463	1.5 1935	38.7 Iron County	130.5R	105.0M
06ZT Inyokern, Etc.	KLOA-LP	LI_D_N CA		251.6 70.1	244.46 BLTVL20080516ABV	35 26 10.0 117 48 56.0	3.000 895	1.5 1528	38.7 Robert D. Adelman	130.5R	114.0M
06ZT Indio	KPOM-CA	LI_D_N CA		206.8 26.0	276.70 BLTVA20130722ACQ	33 55 28.0 116 36 51.0	4.470 360	1.5 543	38.7 Coachella Communi cations,	153.5R	123.2M
06+T Big Bear Lake	K06MU	LI__N CA		215.7 34.7	260.49 BLTVL20030814AJL	34 14 24.0 116 54 47.0	1.000 488	1.5 2098	9.4 Bear Valley Broadcasting,	130.5R	130.0M
06 D Cedar Canyon	K06JA-D	LI_D_N UT		52.4 233.8	267.49 BLDTV20090728ABI	37 35 56.9 112 51 23.2	0.015 -401	1.5 3246	38.7 Cedar Canyon Tv	130.5R	137.0M
06-T Victorville	KCIO-LP	AP_D_N CA		222.7 41.5	284.81 BLTVL20090428AAP	34 15 19.0 117 21 43.0	0.499 1212	1.5 1716	38.7 Obidia Porras	130.5R	154.3M
06NT Long Valley Junctio	K06FM	LI_DHN UT		57.6 239.3	287.45 BLTTV4596	37 30 25.0 112 30 37.0	0.033 278	1.5 2411	38.7 Western Kane County Specia	130.5R	157.0M
06 D Manhattan	K06KQ-D	LI_D_N NV		329.5 148.4	308.99 BLDTV20110531AQP	38 32 16.0 117 03 57.0	0.020 378	1.5 2235	9.4 County Of Nye	130.5R	178.5M
06 D Prescott	K06AE-D	LI_D_N AZ		118.9 300.7	328.69 BLDTV20111114AAT	34 41 14.0 112 07 00.0	0.500 1206	1.5 2347	38.7 Mul ti medi a Hol di ngs Corpor	130.5R	198.2M

CH CITY	CALL	TYPE STATE	ANT STATE	AZI <--	DIST FILE #	LAT LNG	PWR(kW) HAAT(M)	INT(km) COR(M)	PRO(km) LICENSEE	Page # 2		
										IN	(Overlap	*OUT*
06 D	KMRZ-LD	AP	D_N	230.5	334.08	34 12 46.1	3.000	1.5	38.7	130.5R		203.6M
Los Angeles		CA		48.9	BDISDVL20130424ABJ	118 03 41.6	1486	1680	Venture Technologies Group			
06 D	KO6HT-D	LI	D_N	5.2	346.53	39 15 53.0	0.053	1.5	9.4	130.5R		216.0M
Ely		NV		185.4	BLDTV20111216ABM	114 53 35.0	505	2396	White Pine Television Dist			

Terrain database is USGS 03 SEC , R= 73.215 qualifying spacings or FCC minimum Spacings in KM, M= Margin in KM
Contour distances are on direct line to and from reference station. Reference zone= , Co to 3rd adjacent.
All separation margins (if shown) include rounding
Ant Column: (D= DA Standard, Z= DA 73.215, N= Not DA 73.215, _= Omni), Polarization (C,H,V,E), Beamtilt(Y,N,X)
"*"affixed to 'IN' or 'OUT' values = site inside protected contour.

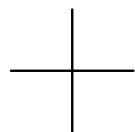






PROP 220D .046kW 839M AMSL
N. Lat. 36 09 22 W. Lng. 115 15 35

PROP vs KLKI
- 12/13



PROP
Clark

115



36

60 dBu

.5