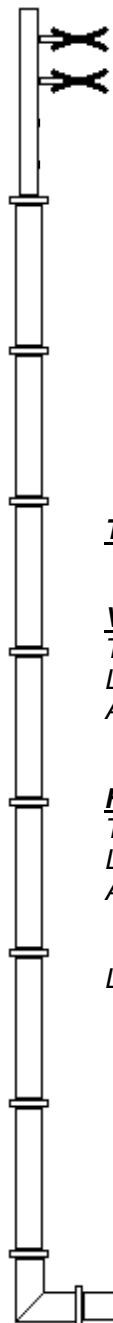


# FM Broadcast Antenna System

## Power Analysis

**WJYO (FM) Channel 218**  
**FORT MEYERS FL**  
**ERI LP-2E**



**ERP:** **Hor or Ver Pol:**  
kW: 3.00  
dBk: 4.77

**POWER GAIN:**  
Ratio: 0.9971  
dBd: -0.01

### **TRANSMISSION LINE:**

#### **VERTICAL RUN:**

Type: RFS HCA 158-50J  
Length, ft: 285 ft.  
Attenuation, dB/100 ft: 0.195 dB/100 ft.

#### **HORIZONTAL RUN:**

Type: RFS HCA 158-50J  
Length, ft: 65 ft.  
Attenuation, dB/100 ft: 0.195 dB/100 ft.

Line Efficiency: 85.45 %

### **ANTENNA INPUT:**

kW: 3.01  
dBk: 4.78

### **LINE LOSS:**

kW: 0.51  
dB: 0.68

#### **Circulator Loss**

kW: 0.00  
dB: 0.00

#### **Filter Loss**

kW: 0.00  
dB: 0.00

#### **Isol Trans Loss**

kW: 0.00  
dB: 0.00

#### **Transmitter Power**

kW: 3.52  
dBk: 5.47

**Final, subject to design and review.**