

Site Coordinates
39° 07' 25" N
77° 37' 31" W
(NAD-27)

Not to
Scale

Not for
Construction

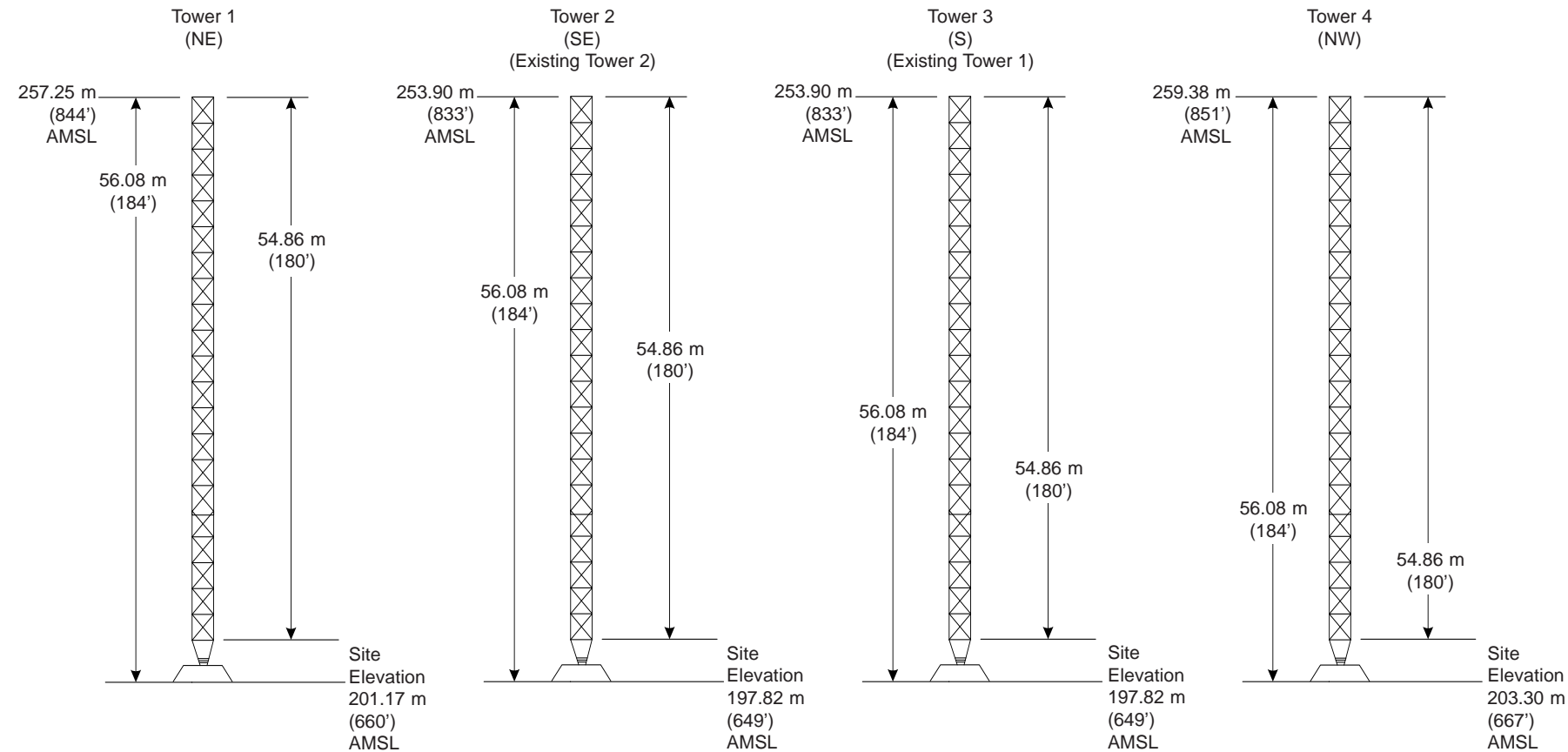


EXHIBIT 11 - FIGURE 2
PROPOSED NIGHTTIME
ANTENNA SYSTEM ELEVATION PLAN

prepared October 2008 for
Potomac Radio, LLC
WAGE(AM) Leesburg, Virginia
Facility ID 54876
1190 kHz 50 kW-D 1.3 kW-N DA-2

Cavell, Mertz & Associates, Inc.
Manassas, Virginia

Note:
The ground system will consist of 120 equally spaced (every 3°), #10 AWG copper wire radials buried around each tower, each radial 89.3° (62.5 m or 205 ft) in length, except where terminated in common 4" transverse copper straps or the Property Boundary. A 4" wide copper strap will also be installed between each Tower interspersed copper radials (120), each 15 m (50 ft) in length will surround each tower base.

Towers: Base insulated, series fed, uniform cross-section, guyed towers; electrical height 54.86 m (78.4° at 1 190 kHz)