

Proposed New Ch 6

BSTA20120201AKC

Latitude: 46-26-36 N

Longitude: 110-25-20 W

ERP: 0.018 kW

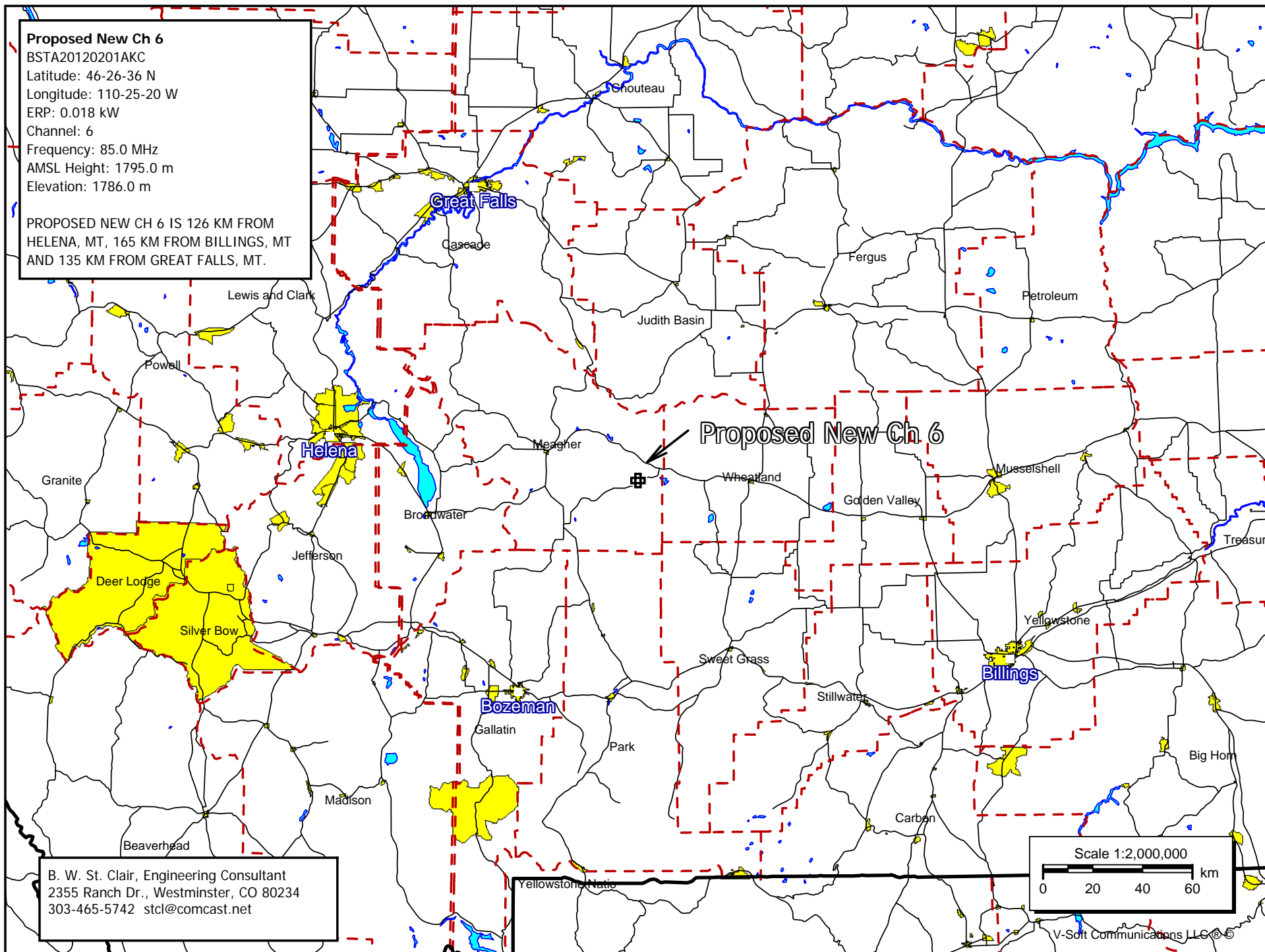
Channel: 6

Frequency: 85.0 MHz

AMSL Height: 1795.0 m

Elevation: 1786.0 m

PROPOSED NEW CH 6 IS 126 KM FROM
HELENA, MT, 165 KM FROM BILLINGS, MT
AND 135 KM FROM GREAT FALLS, MT.



B. W. St. Clair, Engineering Consultant
2355 Ranch Dr., Westminster, CO 80234
303-465-5742 stcl@comcast.net

Scale 1:2,000,000
0 20 40 60 km

V-Soft Communications LLC ©