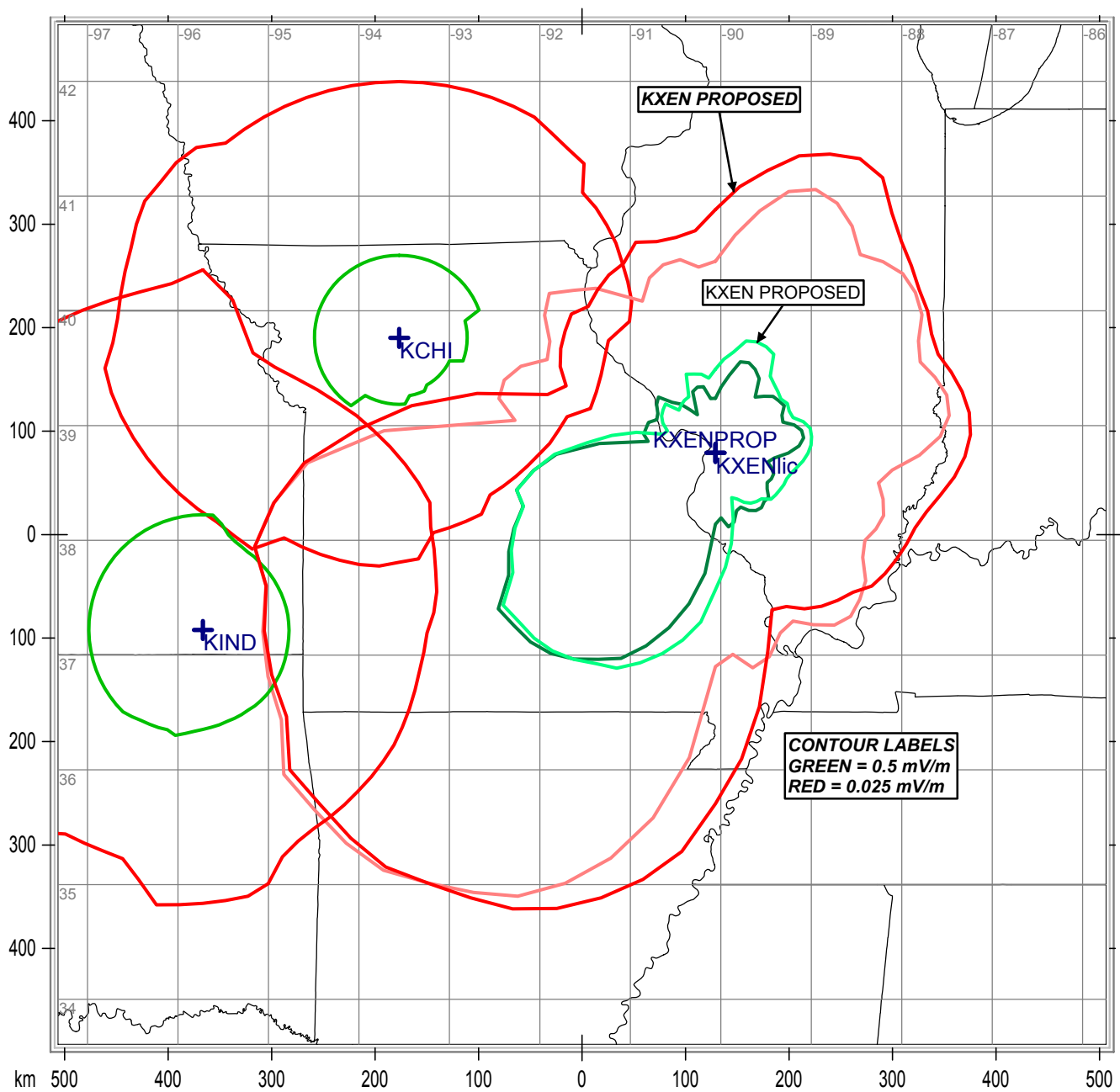


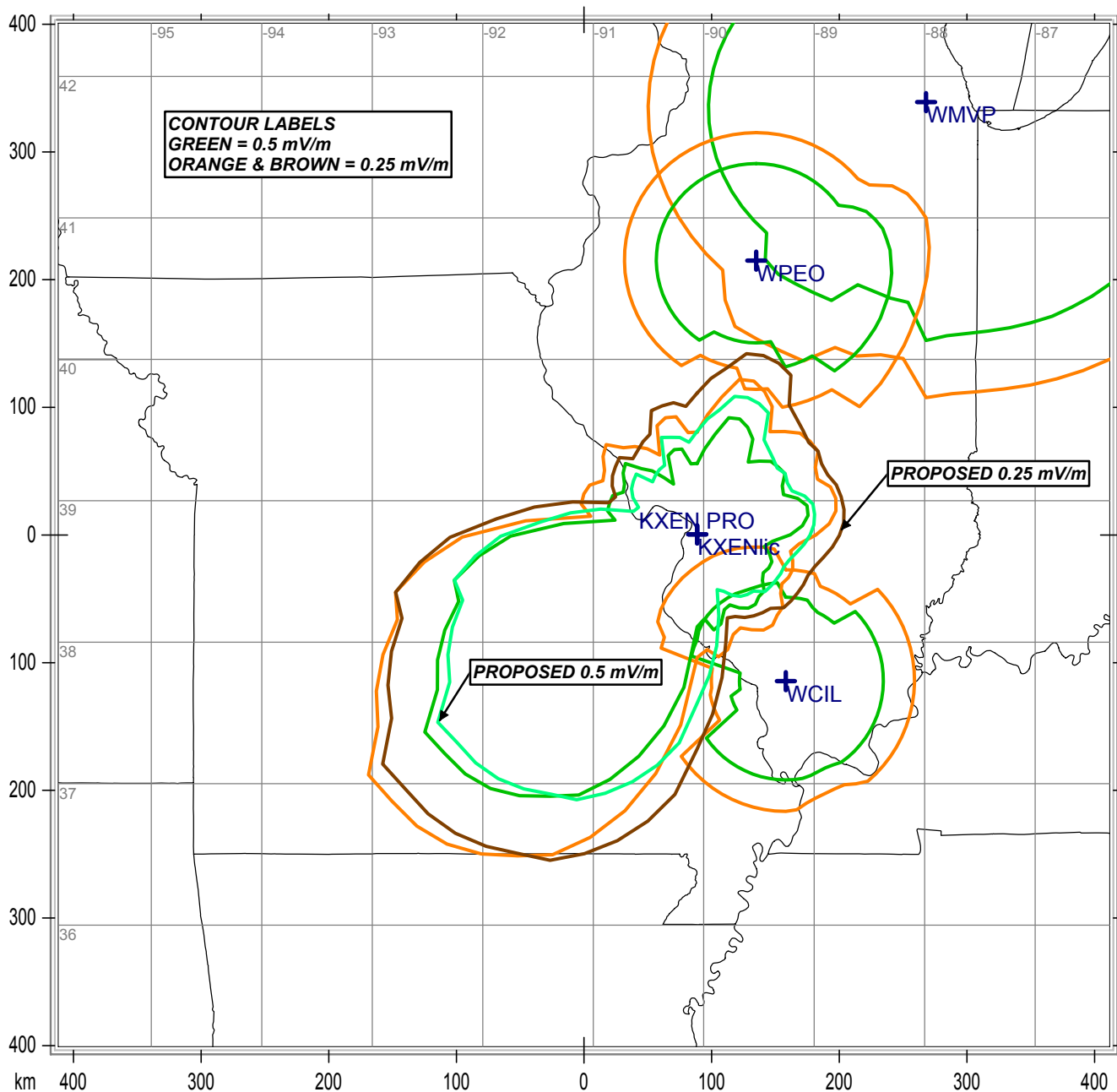
KXEN 1010 kHz 50 kW DA-D ST. LOUIS, MISSOURI



Communications Technologies, Inc. Marlton, New Jersey

National Borders Lat/Lon Grid

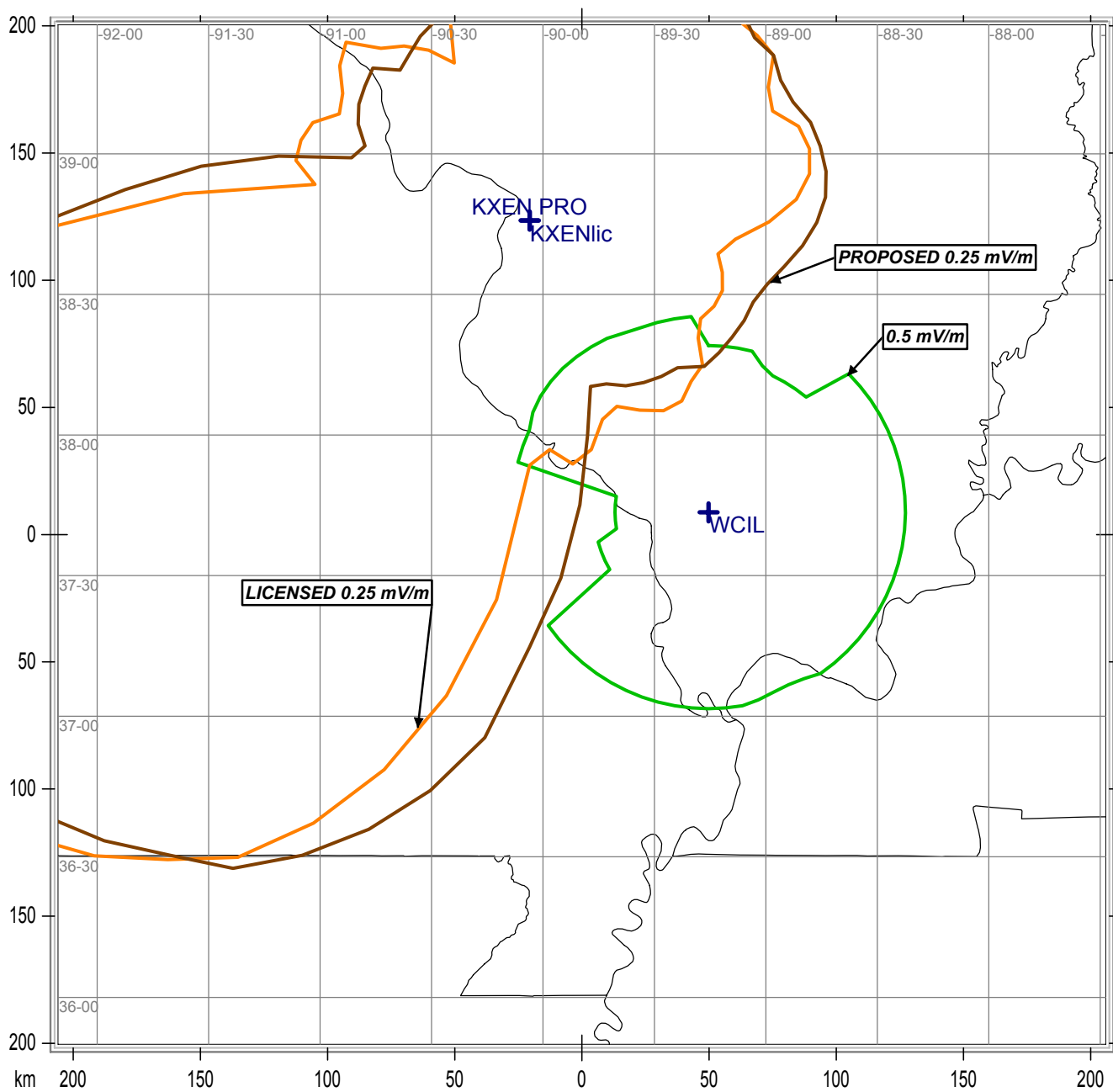
KXEN 1010 kHz 50 kW DA-D ST. LOUIS, MISSOURI



Communications Technologies, Inc. Marlton, New Jersey

National Borders Lat/Lon Grid

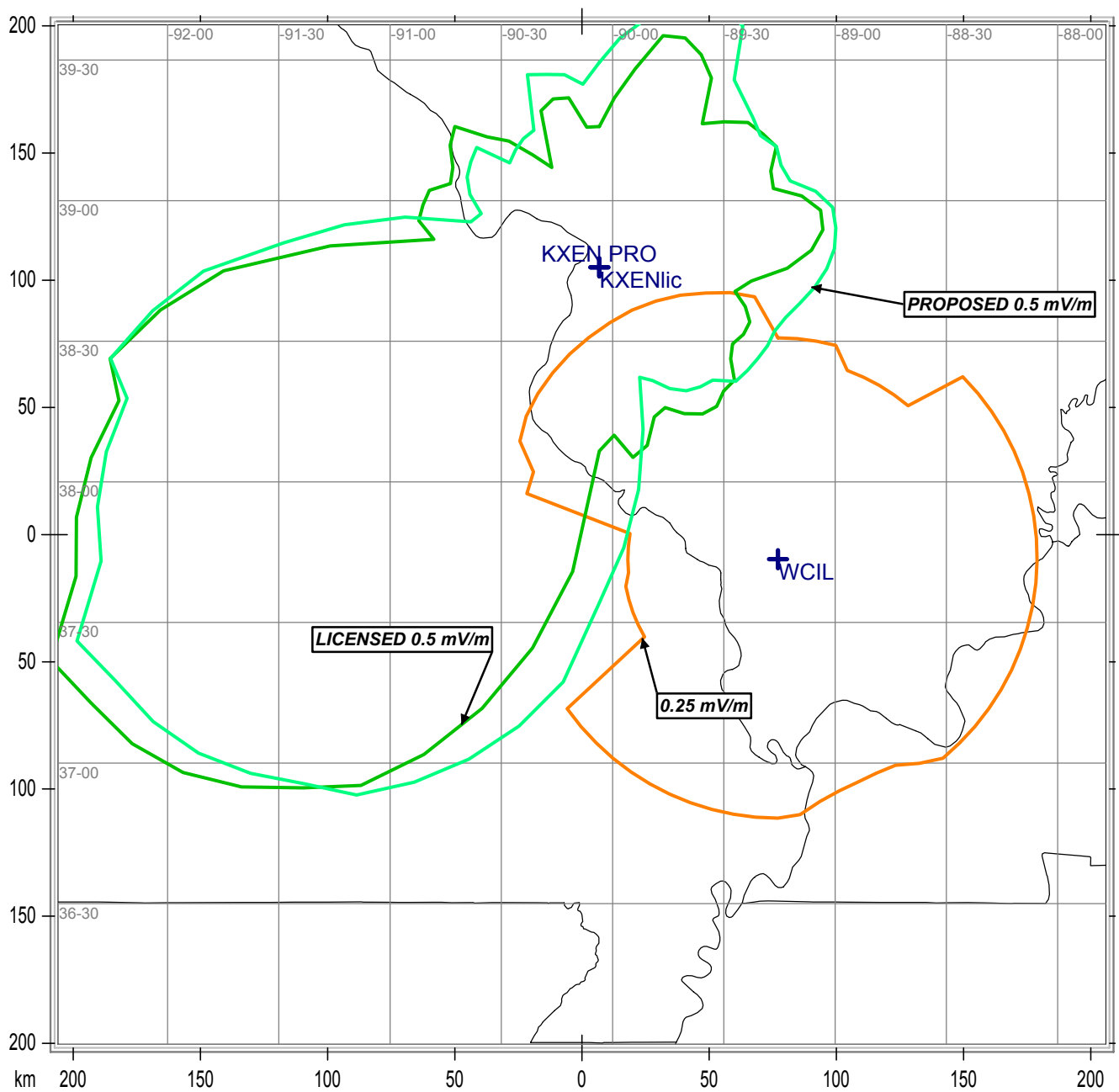
KXEN 1010 kHz 50 kW DA-D ST. LOUIS, MISSOURI



Communications Technologies, Inc. Marlton, New Jersey

National Borders Lat/Lon Grid

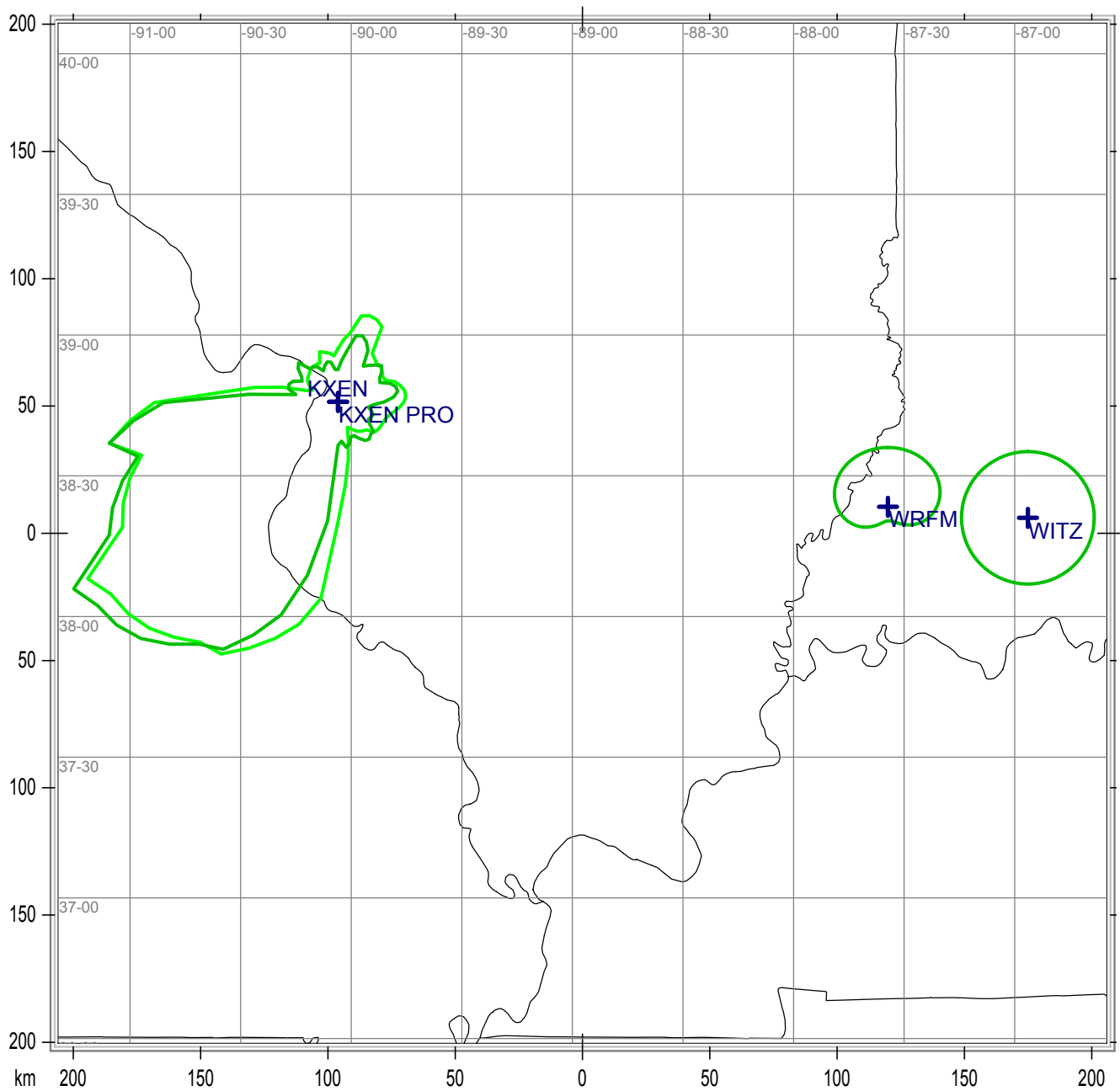
KXEN 1010 kHz 50 kW DA-D ST. LOUIS, MISSOURI



Communications Technologies, Inc. Marlton, New Jersey

National Borders Lat/Lon Grid

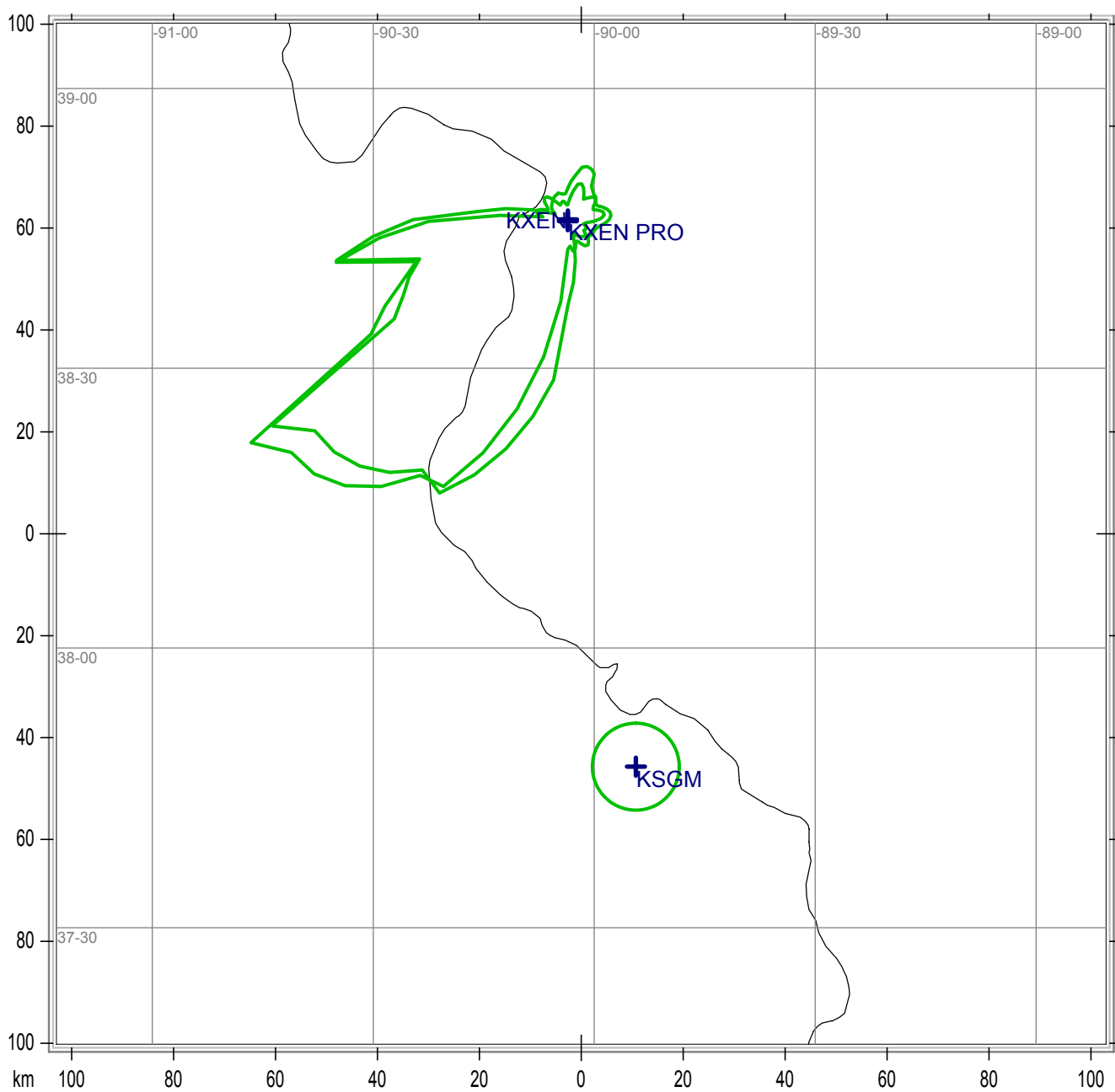
KXEN 1010 kHz 50 kW DA-D ST. LOUIS, MISSOURI



Communications Technologies, Inc. Marlton, New Jersey

National Borders Lat/Lon Grid

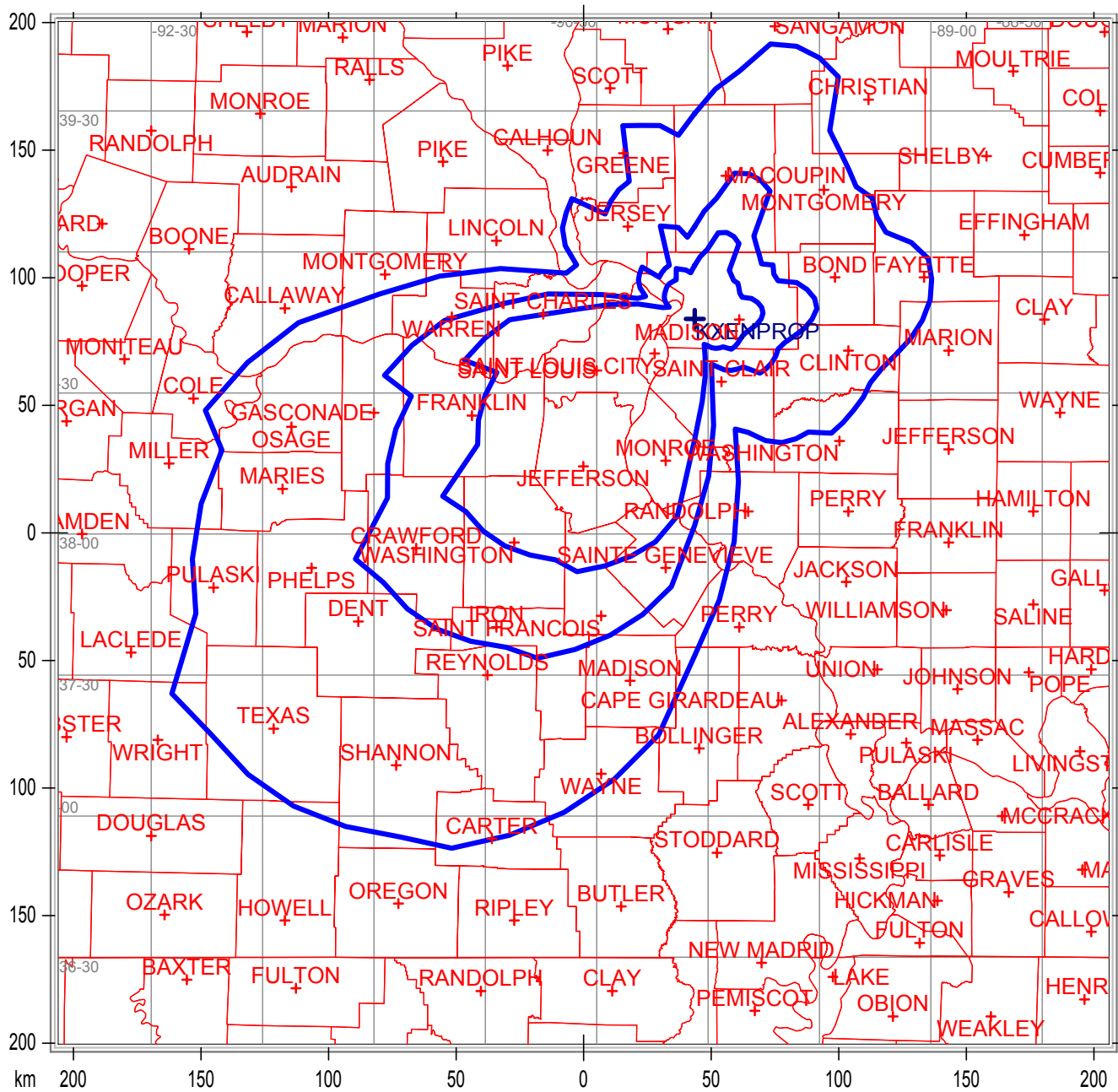
KXEN 1010 kHz 50 kW DA-D ST. LOUIS, MISSOURI 25 mV/m CONTOURS



Communications Technologies, Inc. Marlton, New Jersey

National Borders Lat/Lon Grid

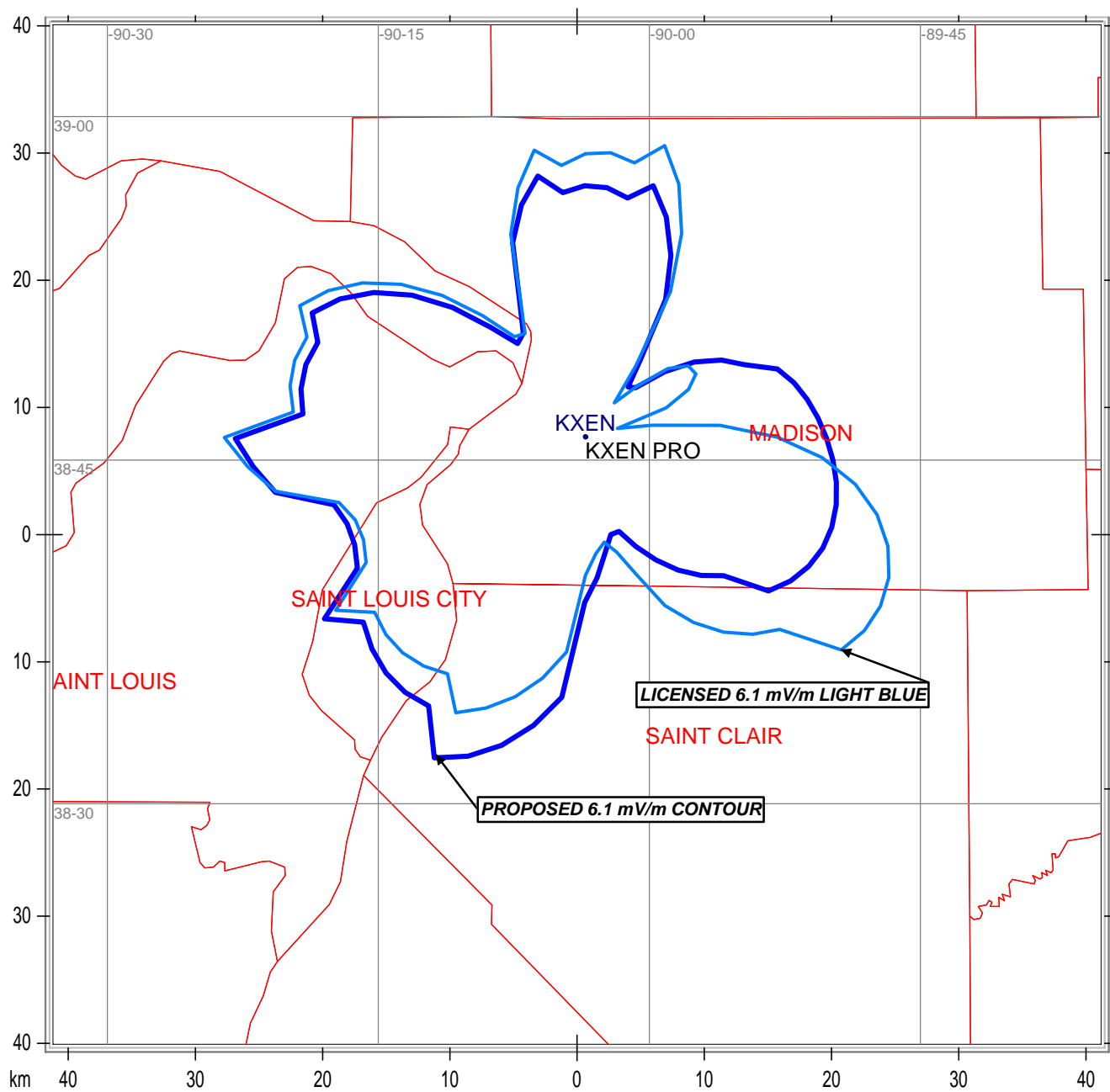
KXEN 1010 kHz 50 kW DA-D ST. LOUIS, MISSOURI



Communications Technologies, Inc. Marlton, New Jersey

County Borders Lat/Lon Grid

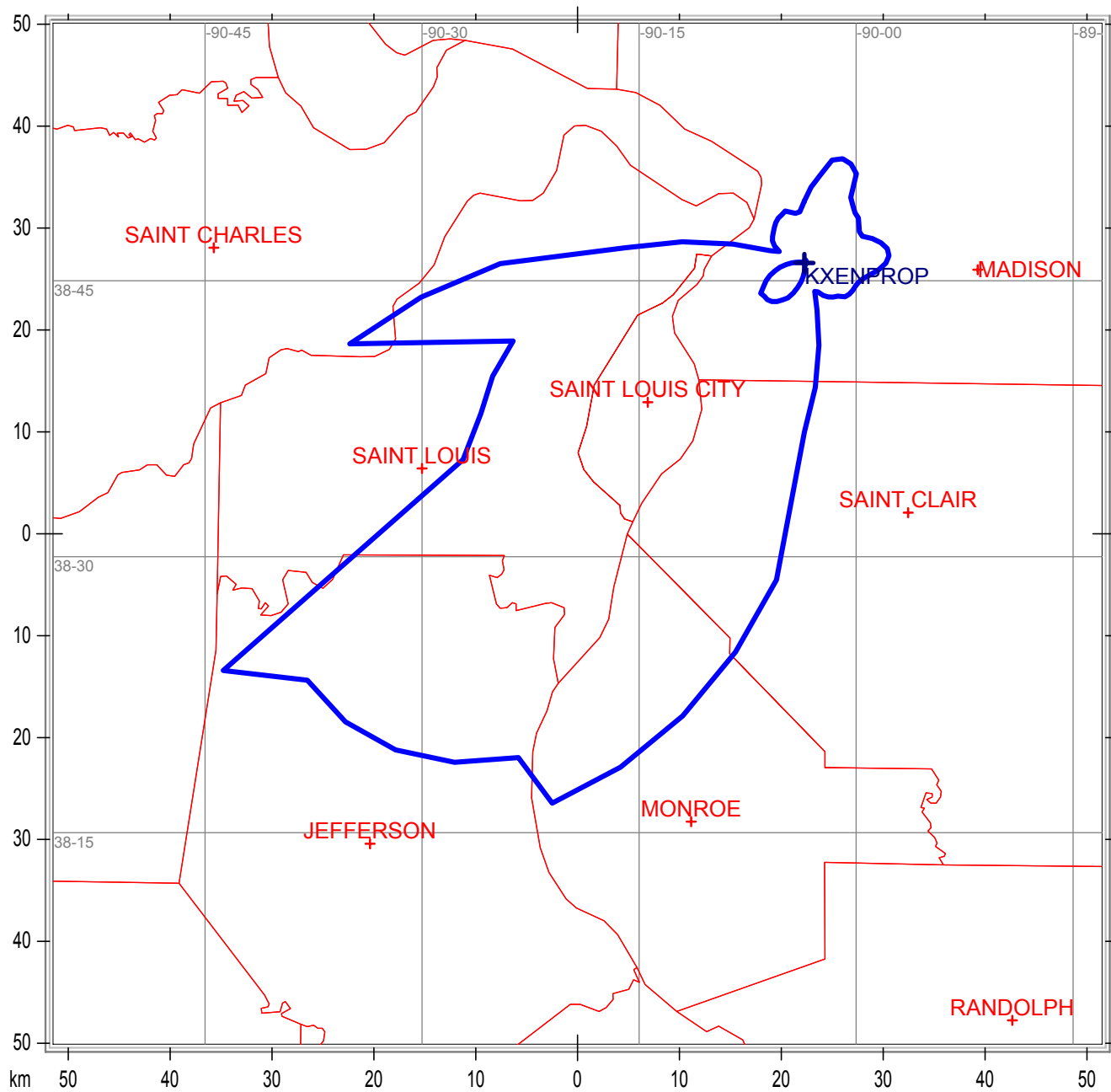
KXEN 1010 kHz 0.42 kW DA-N ST. LOUIS, MISSOURI 6.1 mV/m CONTOURS



Communications Technologies, Inc. Marlton, New Jersey

County Borders Lat/Lon Grid

KXEN 1010 kHz 50 kW DA-D ST. LOUIS, MISSOURI



Communications Technologies, Inc. Marlton, New Jersey

County Borders Lat/Lon Grid

Call sign: KXEN
Frequency: 1010 kHz
Power: 50.000 kW
ERSS: 2601.95 mV/m at 1 km
Q factor at zero degrees:
70.70 mV/m at 1 km
Theoretical pattern RMS:
2084.60 mV/m at 1 km
Standard pattern RMS:
2190.09 mV/m at 1 km
Modified pattern RMS:
0.00 mV/m at 1 km

Coordinates:
N38°45'58.00" W90°03'34.80"

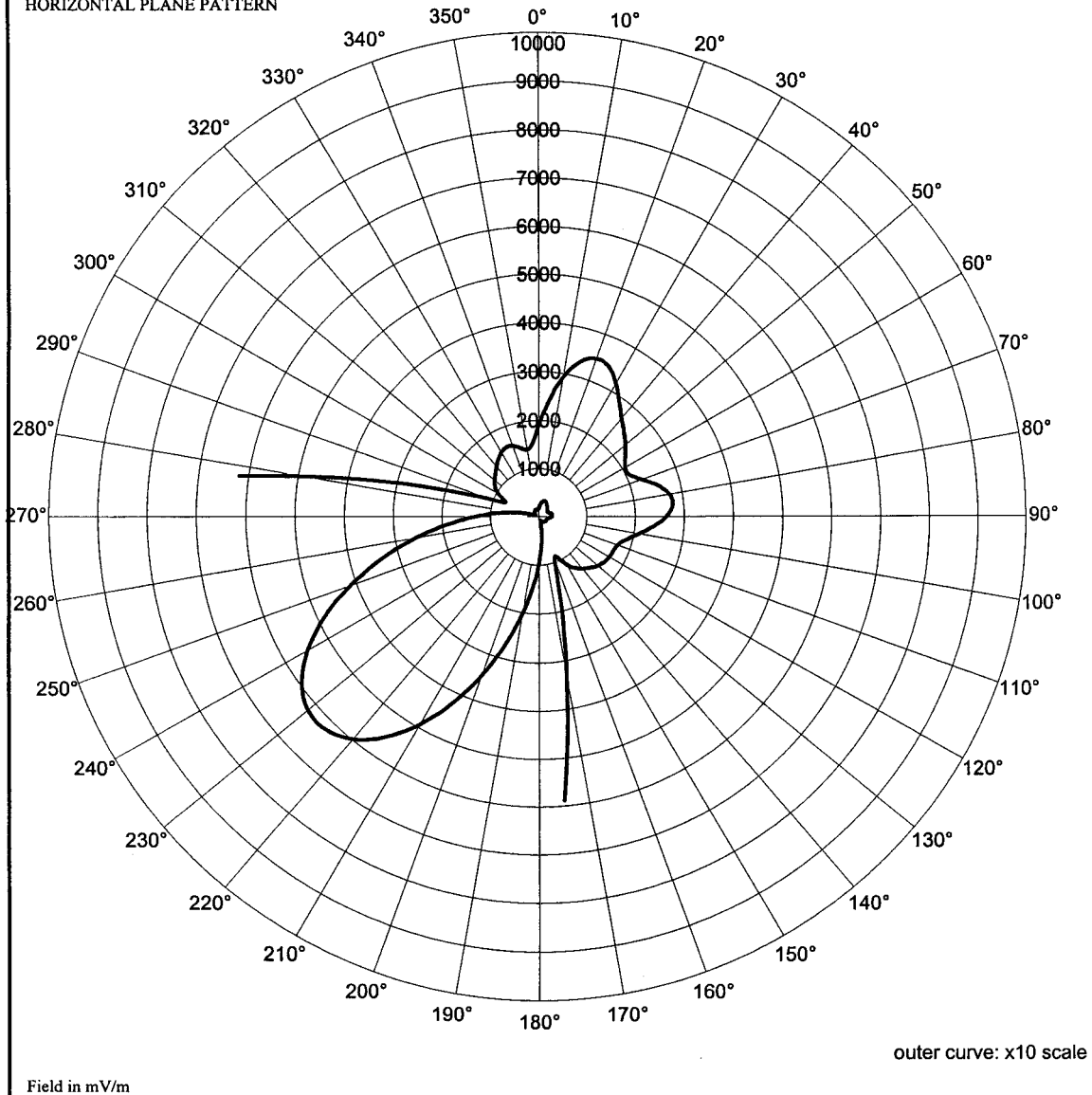
No. of augmentations: 0

TOWER PARAMETERS

##	Field Ratio	Phase (deg.)	Spacing (deg.)	Bearing (deg.)	Tower Ref. Switch	Elec. Height (deg.)	Length Twr. A (deg.)	Length Twr. B (deg.)	Length Twr. C (deg.)	Length Twr. D (deg.)
1	0.540	7.0	0.0	0.0	0	96.0	0.0	0.0	0.0	0.0
2	0.462	105.6	80.0	49.9	0	110.9	0.0	0.0	0.0	0.0
3	1.000	0.0	180.0	138.6	0	96.0	0.0	0.0	0.0	0.0
4	1.000	100.0	198.6	114.9	0	110.9	0.0	0.0	0.0	0.0
5	0.530	0.0	360.0	138.6	0	96.0	0.0	0.0	0.0	0.0
6	0.479	95.0	370.5	126.1	0	110.9	0.0	0.0	0.0	0.0

Figure 8

HORIZONTAL PLANE PATTERN



Call sign: KXEN
Frequency: 1010 kHz
Power: 0.420 kW
ERSS: 330.67 mV/m at 1 km
Q factor at zero degrees:
10.00 mV/m at 1 km
Theoretical pattern RMS:
194.94 mV/m at 1 km
Standard pattern RMS:
204.96 mV/m at 1 km
Modified pattern RMS:
0.00 mV/m at 1 km

Coordinates:
N38°45'58.00" W90°03'34.80"

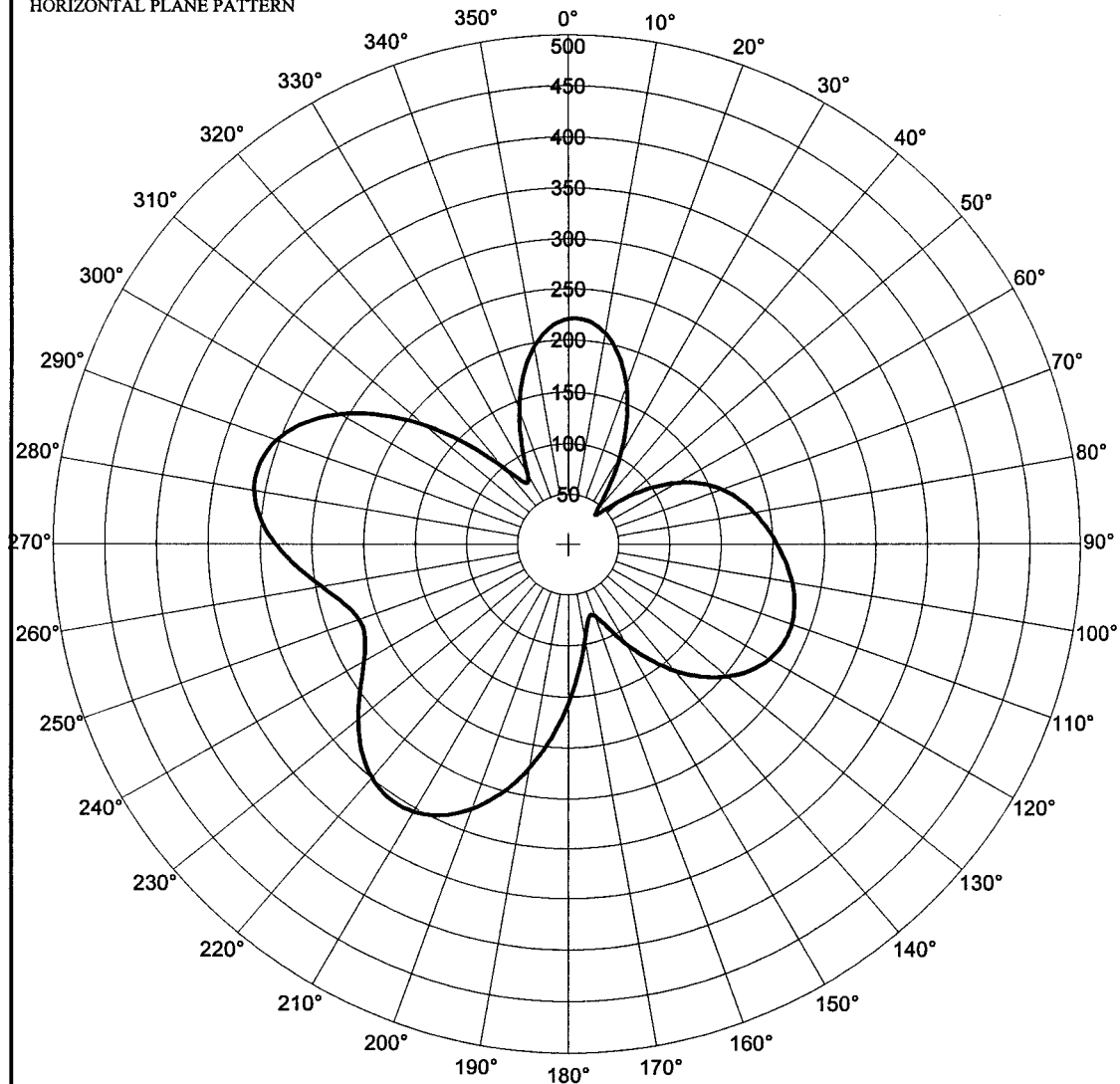
No. of augmentations: 0

TOWER PARAMETERS

	Field	Phase	Spacing	Bearing	Tower	Elec.	Length	Length	Length	Length
##	Ratio	(deg.)	(deg.)	(deg.)	Ref.	Height	Twr. A	Twr. B	Twr. C	Twr. D
1	0.634	-145.3	0.0	0.0	0	96.0	0.0	0.0	0.0	0.0
2	1.000	0.0	80.0	49.9	0	110.9	0.0	0.0	0.0	0.0
3	0.136	22.7	180.0	138.6	0	96.0	0.0	0.0	0.0	0.0
4	0.448	-78.3	198.6	114.9	0	110.9	0.0	0.0	0.0	0.0
5	0.520	-22.6	140.7	183.0	0	110.9	0.0	0.0	0.0	0.0

Figure 9

HORIZONTAL PLANE PATTERN



Field in mV/m

Tower 1 438.4' S of N Boundary,
257.2' E of W Boundary

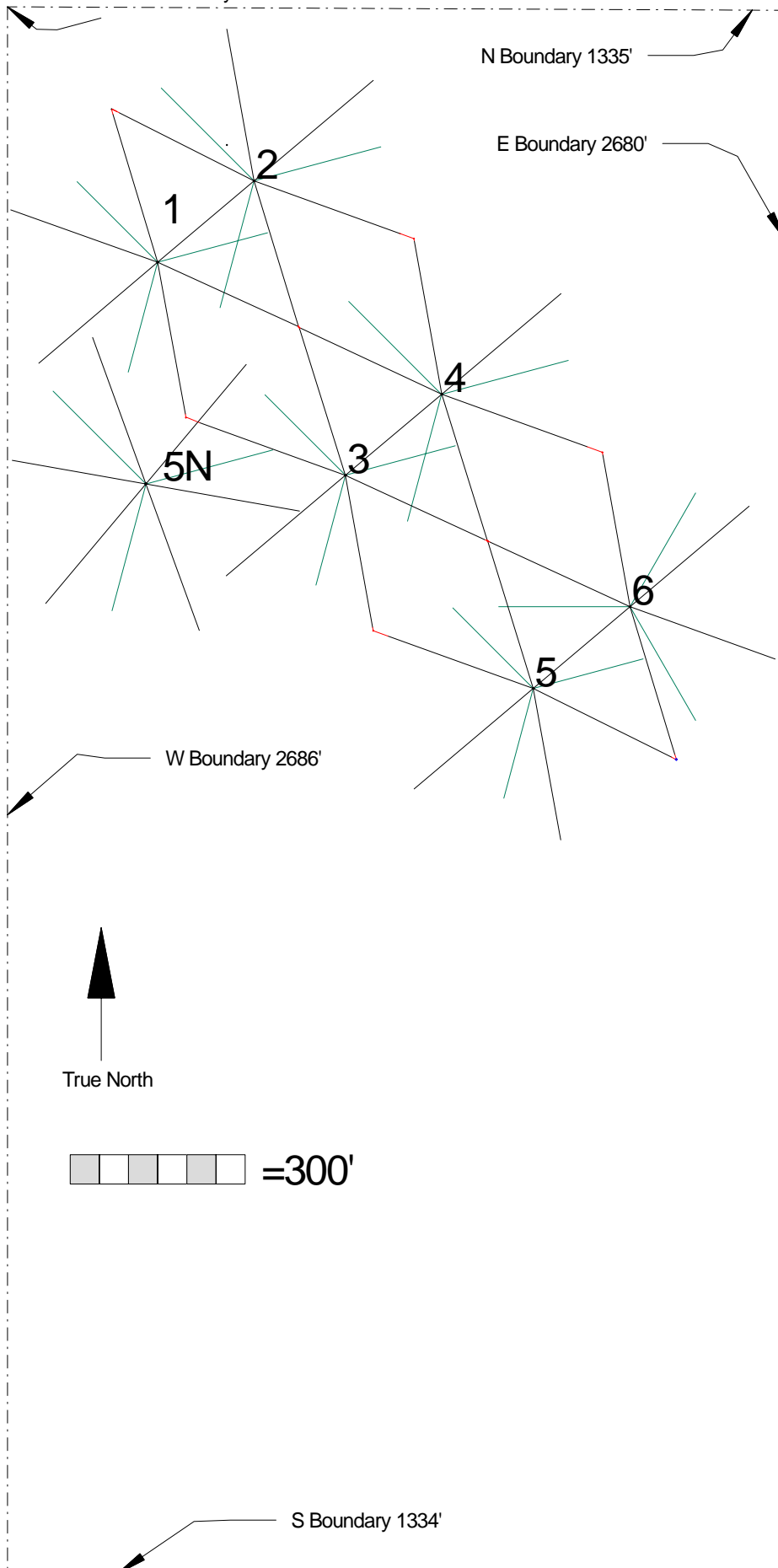


Figure 10
Property Plat Sketch
KXEN
1010 KHz
St Louis, MO

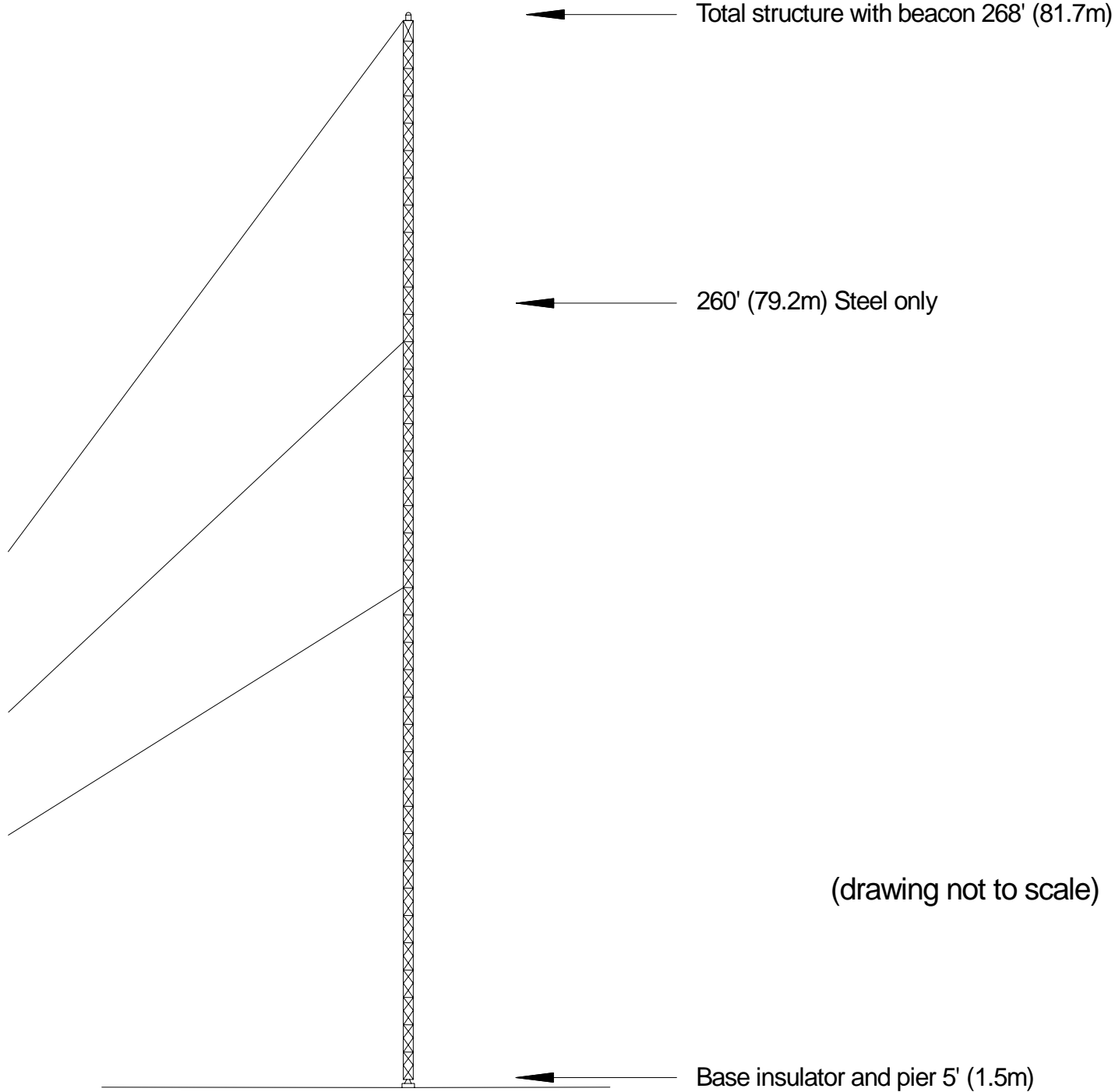


Figure 11a
Vertical Plan Sketch
Towers 1, 3, 5
KXEN
1010 KHz
St Louis, MO

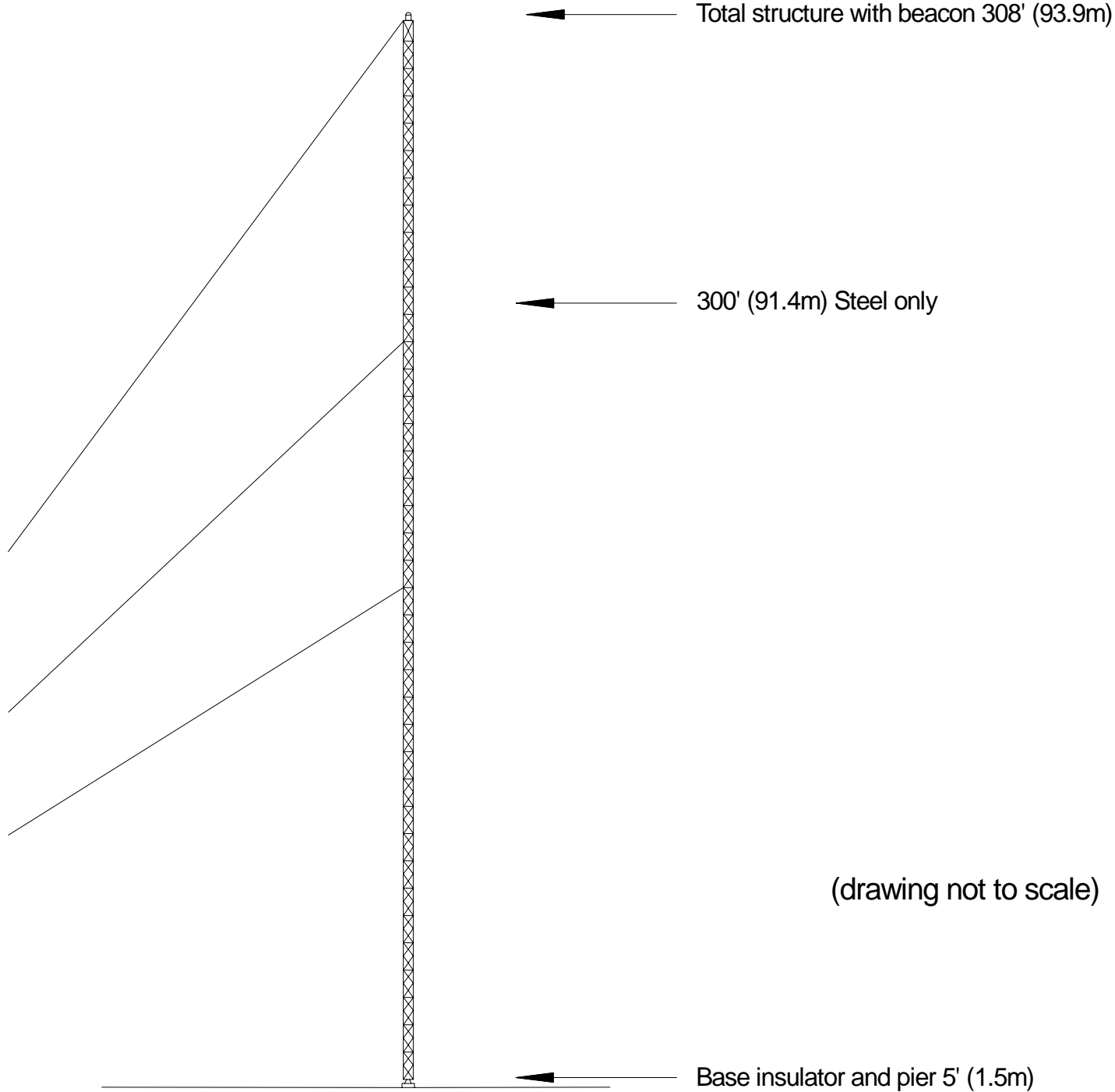


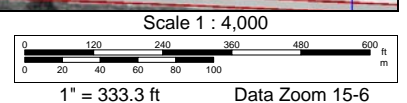
Figure 11b
Vertical Plan Sketch
Towers 2, 4, 6 & 5N
KXEN
1010 KHz
St Louis, MO



Data use subject to license.

© DeLorme. DeLorme Topo USA® 7.0.

www.delorme.com



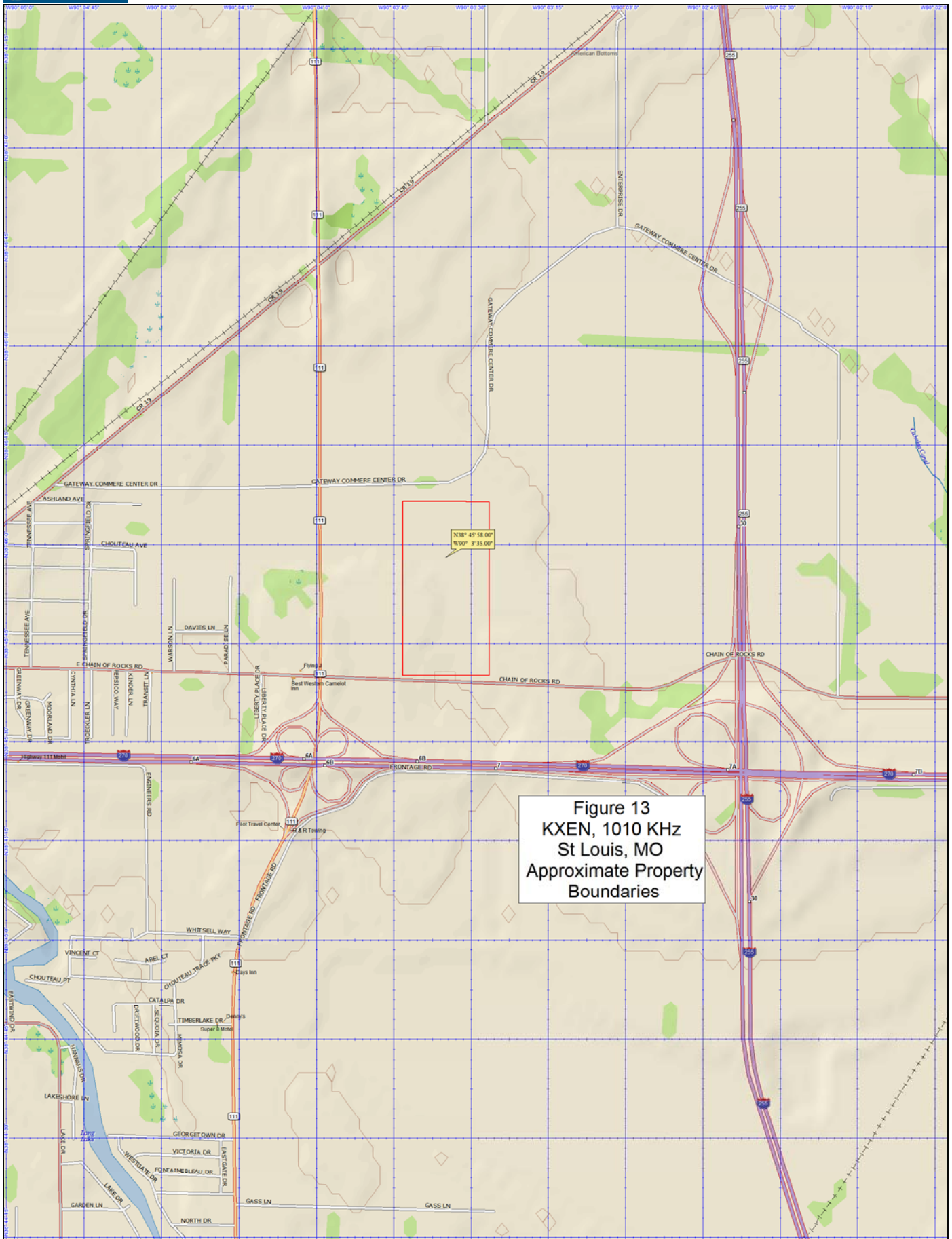
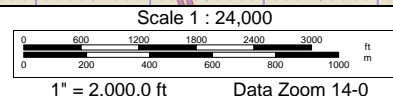


Figure 13
KXEN, 1010 KHz
St Louis, MO
Approximate Property
Boundaries

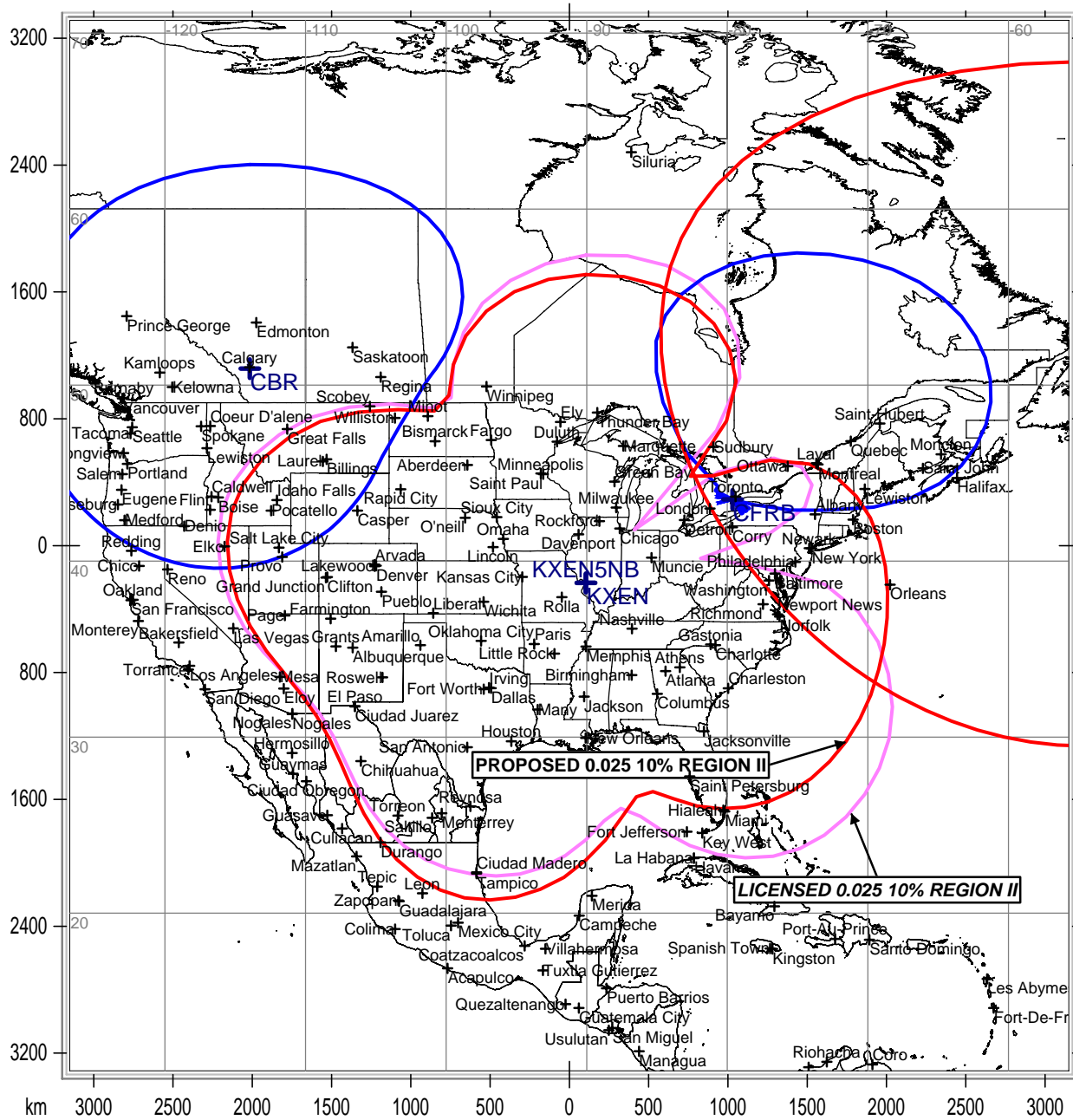
Data use subject to license.

© DeLorme. DeLorme Topo USA® 7.0.

www.delorme.com



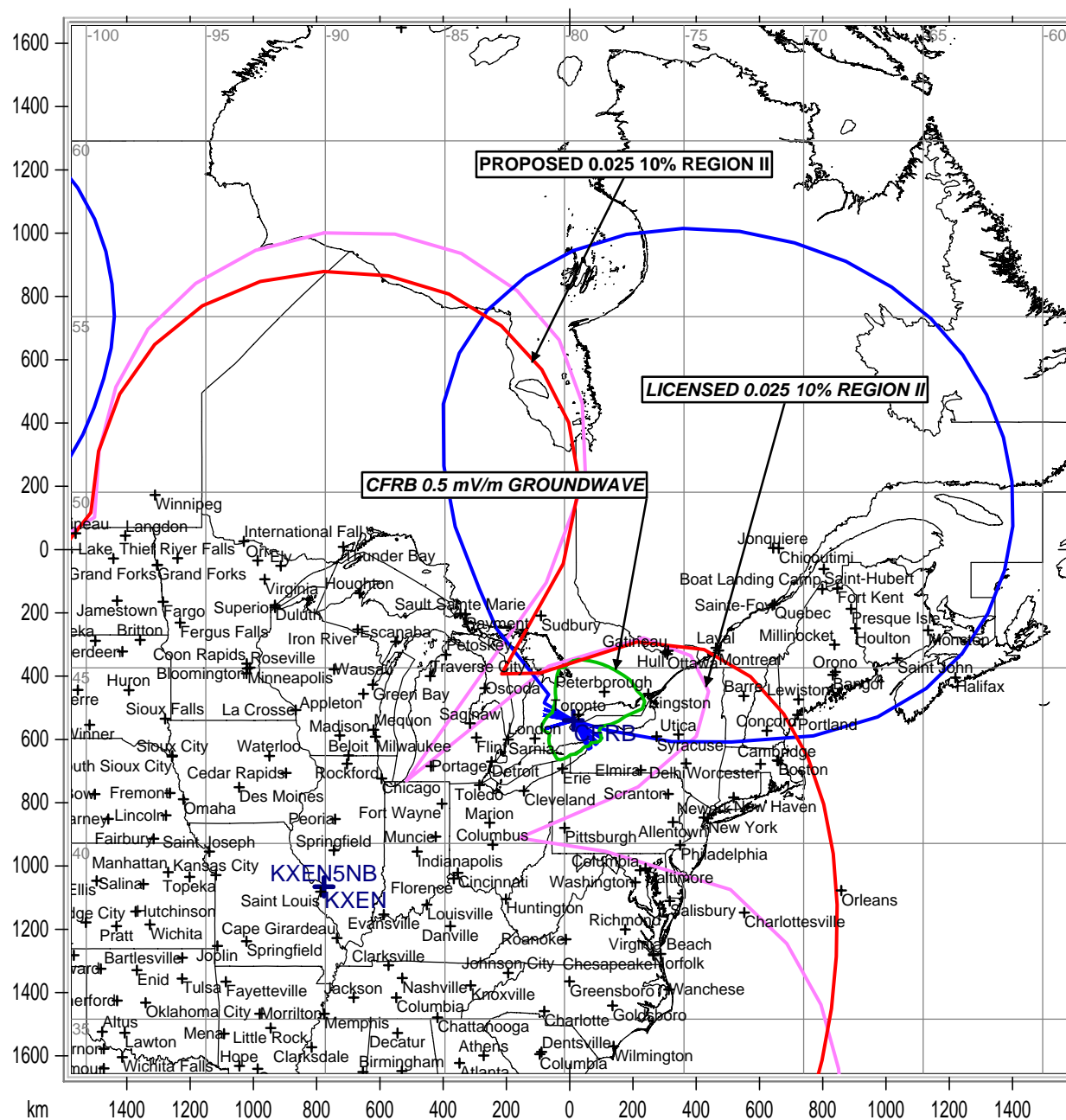
KXEN 1010 kHz 0.42 kW DA-N ST. LOUIS, MISSOURI



Communications Technologies, Inc. Marlton, New Jersey

— National Borders — Lat/Lon Grid

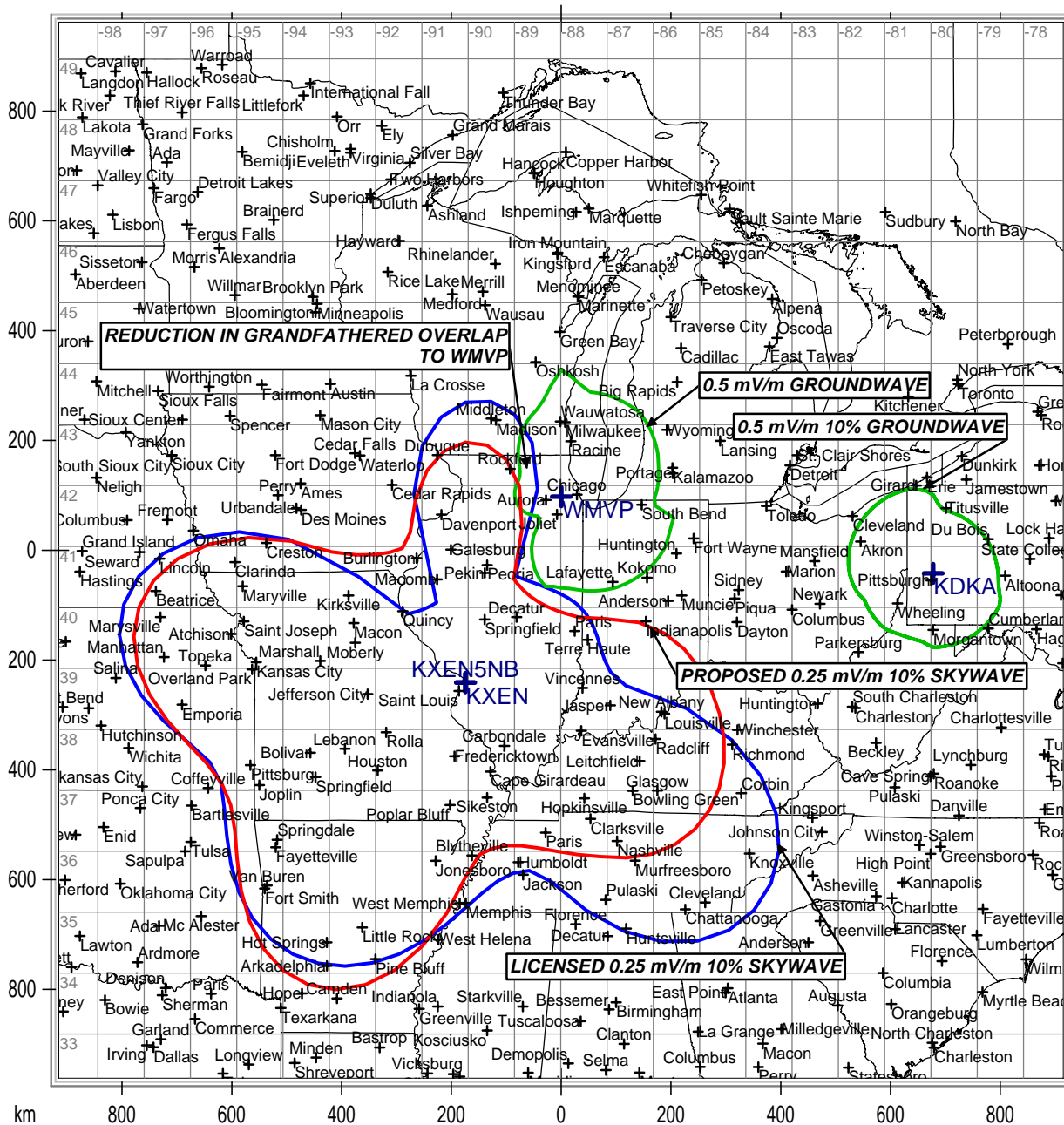
KXEN 1010 kHz 0.42 kW DA-N ST. LOUIS, MISSOURI



Communications Technologies, Inc. Marlton, New Jersey

— National Borders — Lat/Lon Grid

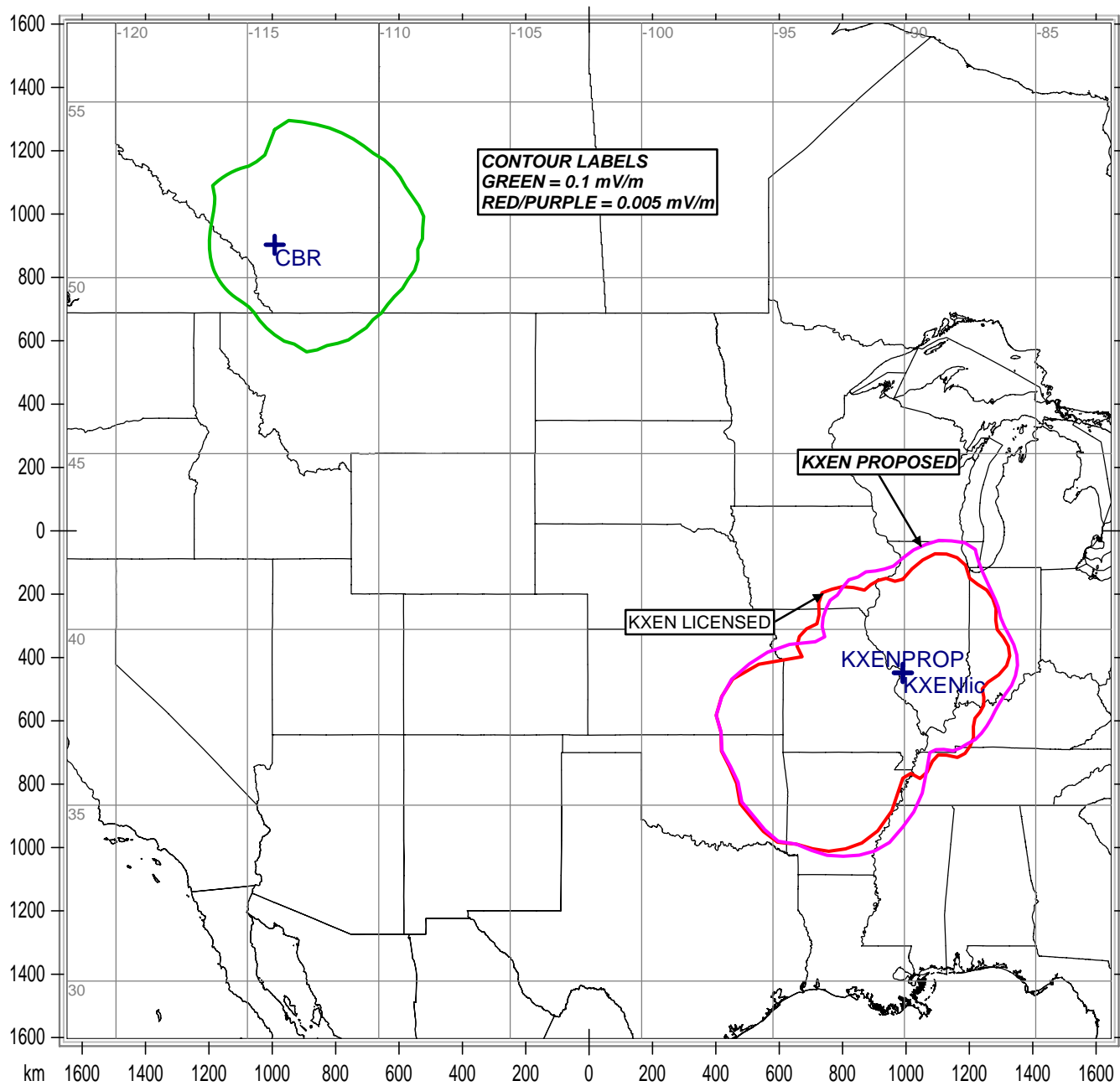
KXEN 1010 kHz 0.42 kW DA-N ST. LOUIS, MISSOURI



Communications Technologies, Inc. Marlton, New Jersey

— National Borders — Lat/Lon Grid

KXEN 1010 kHz 50 kW DA-D ST. LOUIS, MISSOURI



Communications Technologies, Inc. Marlton, New Jersey

National Borders Lat/Lon Grid