

WJPM-DT CHANNEL 45 MINOR
CHANGE IN LICENSED FACILITY
APPLICATION FOR MAXIMIZED
POST-TRANSITION DTV OPERATION
FLORENCE, SOUTH CAROLINA
(South Carolina Educational Television Commission)

KESSLER AND GEHMAN ASSOCIATES, INC.
TELECOMMUNICATIONS CONSULTING ENGINEERS

20080620

Prepared by William T. Godfrey, Jr.

KG&A

507 N.W. 60th Street, Suite C
Gainesville, Florida 32607



Kessler and Gehman Associates, Inc.

Telecommunications Consulting Engineers

ENGINEERING TECHNICAL STATEMENT PREPARED BY WILLIAM T. GODFREY, JR. OF THE FIRM KESSLER AND GEHMAN ASSOCIATES, INC., TELECOMMUNICATIONS CONSULTING ENGINEERS IN CONNECTION WITH A MINOR CHANGE IN LICENSED FACILITY APPLICATION (BLEDT-20050324ACE) REQUESTING A CONSTRUCTION PERMIT FOR AUTHORIZATION TO OPERATE THE SOUTH CAROLINA EDUCATIONAL TELEVISION COMMISSION (SCETC) DIGITAL TELEVISION BROADCAST FACILITY, WJPM-DT CHANNEL 45, WITH MAXIMIZED PARAMETERS ON ITS POST-TRANSITION DIGITAL CHANNEL AS ADOPTED IN APPENDIX B.

The firm Kessler and Gehman Associates, Inc. has been retained by South Carolina Educational Television Commission (SCETC), Columbia, SC to prepare engineering studies and the engineering portion of a minor change in licensed facility application (BLEDT-20050324ACE) requesting authorization to maximize the WJPM-DT Channel 45 post-transition DTV facility pursuant to the procedures outlined in the Third Periodic Review Report and Order (MB Docket No. 07-91) and the Public Notice released on May 30, 2008 lifting the freeze on maximization application filings (DA-08-1213). The following table depicts the allotted (Appendix B), licensed (LIC) and proposed (maximized) parameters respectively for the WJPM-DT post-transition DTV facility.

<i>Facility ID</i>	<i>State</i>	<i>City</i>	<i>Call Sign</i>	<i>DTV Chan</i>	<i>DTV ERP (kW)</i>	<i>DTV HAAT (m)</i>	<i>DTV Antenna ID</i>	<i>DTV Latitude (DDMMSS)</i>	<i>DTV Longitude (DDMMSS)</i>
--------------------	--------------	-------------	------------------	-----------------	---------------------	---------------------	-----------------------	------------------------------	-------------------------------

• **Final DTV Table of Allotments (Appendix B) Parameters:**

61008	SC	FLORENCE	WJPM	45	45.0	242	OMNI	341648	794435
-------	----	----------	------	----	------	-----	------	--------	--------

• **Authorized Parameters (BLEDT-20050324ACE):**

61008	SC	FLORENCE	WJPM	45	45.0	242.4	OMNI	341648	794435
-------	----	----------	------	----	------	-------	------	--------	--------

• **Proposed Maximized Parameters:**

61008	SC	FLORENCE	WJPM	45	108.9	242.4	OMNI	341648	794435
-------	----	----------	------	----	-------	-------	------	--------	--------



Accordingly, SCETC proposes to maximize operation of the WJPM-DT Channel 45 post-transition DTV facility by making the following change to its digital Channel 45 license for post-transition DTV operation:

- 1) Increase maximum Effective Radiated Power (ERP) from 45.0 kW to 108.9 kW.

All other operating parameters shall remain as authorized in the existing license (BLEDT-20050324ACE).

Post-Transition Interference Protection

The proposed facility satisfies the post-transition interference protection provisions of §73.616 of the FCC Rules. Exhibits 10 (Part1) and 11 (Part2) are Longley-Rice interference studies that were computed using a Sun Microsystems SPARC 5 computer work station loaded with the FCC's DTV analysis software. The interference percentages are exactly the same as the FCC calculations since the studies were performed using the same type computers and the same interference analysis software. Exhibit 10 was run to determine the interference predicted to each desired station from the proposed WJPM-DT Channel 45 post-transition DTV maximized facility. The FCC program recognized a mutually exclusive situation between the proposed WJPM-DT maximized facility and the allotted WJPM-DT Appendix B facility because they both had the same community of license (Florence) and they both were assigned Channel 45. As a result, the program threw out the allotted Channel 45 facility in the "Before" studies and used the proposed Channel 45 maximized facility in the "After" studies. Therefore, only the populations in the "After" studies are used in Exhibit 10 to identify the population predicted to receive interference from the proposed maximized facility. Exhibit 11 is the exact same study as Exhibit 10 except the community of license was purposely changed from "Florence" to "Florence _2" for the proposed maximized facility so that the program would not throw out the allotted Channel 45 facility. Referring to Exhibit 11, it can be seen that the "Before" studies now contain the allotted Channel 45 facility so that the interference predicted to be received within the desired stations protected noise limited contour from the allotted Channel 45 facility can be calculated for masking purposes.



Referring to Exhibit 10, it can be seen that the following stations are within the prescribed culling distance and are potentially affected by the proposed facility:

Chan	Call	City/State	Dist(km)	Status	Application	Ref. No.
44	WUNG-TV	CONCORD NC	143.6	LIC	BDTV	-0952
44	WECT	WILMINGTON NC	139.1	LIC	BDTV	-0985
44	WJWJ-TV	BEAUFORT SC	194.8	LIC	BDTV	-1384
45	WGNM	MACON GA	391.6	LIC	BDTV	-0417
45	WYCW	ASHEVILLE NC	276.9	LIC	BDTV	-0943
46	WWAY	WILMINGTON NC	143.9	LIC	BDTV	-0986

The following post-transition DTV stations listed above are either beyond the site to the nearest cell evaluation distance or are not predicted to receive interference from the proposed WJPM-DT facility:

Chan	Call	City/State	Dist(km)	Status	Application	Ref. No.
44	WUNG-TV	CONCORD NC	143.6	LIC	BDTV	-0952
44	WECT	WILMINGTON NC	139.1	LIC	BDTV	-0985
44	WJWJ-TV	BEAUFORT SC	194.8	LIC	BDTV	-1384
45	WGNM	MACON GA	391.6	LIC	BDTV	-0417
46	WWAY	WILMINGTON NC	143.9	LIC	BDTV	-0986

Therefore, the only post-transition DTV station within the prescribed culling distance that is predicted to receive new interference from the proposed WJPM-DT facility is:

Chan	Call	City/State	Dist(km)	Status	Application	Ref. No.
45	WYCW	ASHEVILLE NC	276.9	LIC	BDTV	-0943

It can be seen in the “Before” analysis in Exhibit 11 that 2,833 persons within the WYCW-DT Channel 45 post-transition DTV facility’s protected noise limited contour are predicted to receive interference from one or more of the following post-transition DTV stations, which does not include the proposed WJPM-DT facility but does include the WJPM-DT allotted facility:

44A NC	CONCORD	BDTV	0952	LIC
45A GA	MACON	BDTV	0417	LIC
45A SC	FLORENCE	BDTV	1401	LIC

Referring to the “After” analysis in Exhibit 10, it can be seen that 3,695 persons within the WYCW-DT Channel 45 post-transition DTV facility’s protected noise limited contour are



Kessler and Gehman Associates, Inc.

Telecommunications Consulting Engineers

predicted to receive interference from one or more of the following post-transition DTV stations, which includes the proposed WJPM-DT facility but does not include the allotted facility:

44A NC CONCORD	BDTV	0952	LIC
45A GA MACON	BDTV	0417	LIC
45A SC FLORENCE	USERRECORD01		APP

Accordingly, the proposed WJPM-DT post-transition DTV facility is predicted to cause 0.042% new interference to the WYCW-DT Channel 45 post-transition DTV facility $[(3,695-2,833)/2,045,248]$ which rounds down to 0.0%.

The interference studies demonstrate that the proposed facility is predicted to cause 0.0% new interference, to all post-transition DTV stations considered in the culling list, which is below the 0.5% new interference standard. Accordingly, the 0.5% new interference standard, pursuant to §V.F. (¶155) of the Third Periodic Review Report and Order, has been satisfied.

SCETC proposes to operate the WJPM-DT Channel 45 maximized facility using a solid state digital transmitter which has a maximum transmitter power output of 5.0 kW (average power). Therefore, SCETC is requesting an ERP of 108.9 kW based on the maximum transmitter power output available from its transmitter.

Exhibits

Exhibits 1 and 2 represent WJPM's administration data, antenna and antenna structure specifications.

Exhibit 3 depicts the profile view of the proposed antenna on the antenna structure with all the appropriate elevations.

Exhibits 4 (11 deg) and 5 (90 deg) display the elevation pattern and Exhibit 6 displays the elevation pattern tabulation.

Exhibit 7 depicts the location of the WJPM-DT transmitter site on a USGS 7.5-Minute (Series) Topographic map.



Exhibit 8 is a principal community contour map demonstrating that the proposed (maximized) WJPM-DT Channel 45 post-transition DTV facility's F(50,90) 48.0 dBuV/m Principal Community contour would completely encompass the principal community of Florence, SC.

Exhibit 9 is a contour map comparing the authorized WJPM-DT Channel 45 F(50,90) 41.6 dBuV/m contour (green) and the proposed (maximized) WJPM-DT Channel 45 F(50,90) 41.6 dBuV/m contour (red).

Exhibits 10 and 11 are Longley-Rice interference studies that were computed using a Sun Microsystems SPARC 5 computer work station loaded with the FCC's DTV analysis software. The exhibits demonstrate compliance with the 0.5% new interference standard.

Environmental Impact

The proposed construction would have no significant environmental impact as defined in §1.1307 of the FCC Rules. The digital transmitter, 6-1/8" transmission line and antenna system shall produce an ERP of 108.9 kW (horizontal polarization). It was determined that the maximum lobe of radiation from the base of the tower would occur at approximately 582.2 feet from the base of the tower (967.4-foot radial distance from the antenna center). At approximately 582.2 feet from the base of the tower, the depression angle of the main lobe will be approximately 53° below the horizontal. At that point, the relative field is 0.231 and the power density six feet above the ground will be approximately 0.00223 mW/cm². This equates to only 0.10% of the Maximum Permissible Exposure (MPE) limits for Occupational/Controlled Exposure and only 0.51% of the MPE limits for General Population/Uncontrolled Exposure authorized by the American National Standards Institute (ANSI). Since operation of the proposed (maximized) WJPM-DT Channel 45 post-transition DTV facility will not exceed 5.0% of the MPE limit for Occupational/Controlled Exposure or General Population/Uncontrolled Exposure at any point on the ground, the proposed (maximized) WJPM-DT facility is not considered a "significant contributor" to the RF exposure environment pursuant to OET Bulletin 65, Edition 97-01. Therefore, contributions of exposure



Kessler and Gehman Associates, Inc.

Telecommunications Consulting Engineers

from other sources were not accounted for in this analysis. It is safe to conclude that the emissions would be insignificant and well within the maximum allowable requirements.

If other antennas are placed on the tower in the future, the licensee will cooperate with those users by reducing or completely terminating the power to the antenna when maintenance workers are in danger from the electromagnetic radiation emanating from the antenna. It is also understood that additional antennas on the support structure could increase the overall RF exposure levels and it is the responsibility of each licensee to ensure that the total RF exposure resulting from the operation of all antennas on the support structure do not exceed the maximum permissible exposure level at any point on the ground.

Certification

This technical statement was prepared by William T. Godfrey, Telecommunications Consultant with Kessler and Gehman Associates, Inc. having offices in Gainesville, Florida and has been working in the field of radio and television broadcast consulting since 1998. He graduated from the University of North Florida with a Bachelor of Arts degree in Criminal Justice and a minor in Mathematics in 1993. As a Professional in the field of Telecommunications he states under penalty of perjury that the information contained in this report is true and correct to the best of his knowledge and belief.



KESSLER AND GEHMAN ASSOCIATES, INC.

A handwritten signature in blue ink that reads 'William T. Godfrey, Jr.' is written over a horizontal line.

WILLIAM T. GODFREY, JR.
Telecommunications Technical Consultant

20 June, 2008

WJPM-DT CHANNEL 45 MAXIMIZED DTV FACILITY

Florence, South Carolina

ENGINEERING SPECIFICATIONS

A. Transmitter Site:

Geographic coordinates (NAD27):

North Latitude	34° 16' 48"
West Longitude	79° 44' 35"

Transmitter Site: **County Road 173**
 5.5 miles NNE of Florence, SC

B. Main Studio Site Address: **1101 George Rogers Boulevard**
 Columbia, South Carolina 29201

Proposed Facility:

DTV Channel	Number	45
	Frequency	656-662 MHz

C. Antenna Height:

Height of Site Above Mean Sea Level (AMSL)	36.5 M
Overall Height of Structure Above Ground	246.7 M
(including all appurtenances)	
Overall Height of Structure Above Mean Sea Level	283.2 M
(including all appurtenances)	
Height of Site Above Average Terrain	5.1 M
Antenna Height Radiation Center (R/C) Above Ground	237.3 M
Antenna Height R/C Above Mean Sea Level	273.8 M
Average of All Non-Odd Radials	31.4 M
Antenna Height R/C Above Average Terrain	242.4 M

D. System Parameters – Horizontal Polarization:

Transmitter Power Required:	5.0 kW
Maximum Power Input to Antenna:	3.7 kW
Transmission Line Loss:	1.01 dB
Combiner & Splitter Loss:	0.25 dB
Total System Loss:	1.26 dB
Transmission Line Efficiency:	79.3%
Combiner & Splitter Efficiency:	94.4%
Total System Efficiency:	74.8%
Maximum Antenna Gain in Beam Maximum:	14.64 dB
Maximum Antenna Gain in Horizontal Plane:	12.88 dB
Maximum Effective Radiated Power:	20.37 dBk
In Beam Maximum:	108.9 kW
Maximum Effective Radiated Power:	18.61 dBk
In Horizontal Plane:	72.6 kW

WJPM-DT CHANNEL 45 MAXIMIZED DTV FACILITY

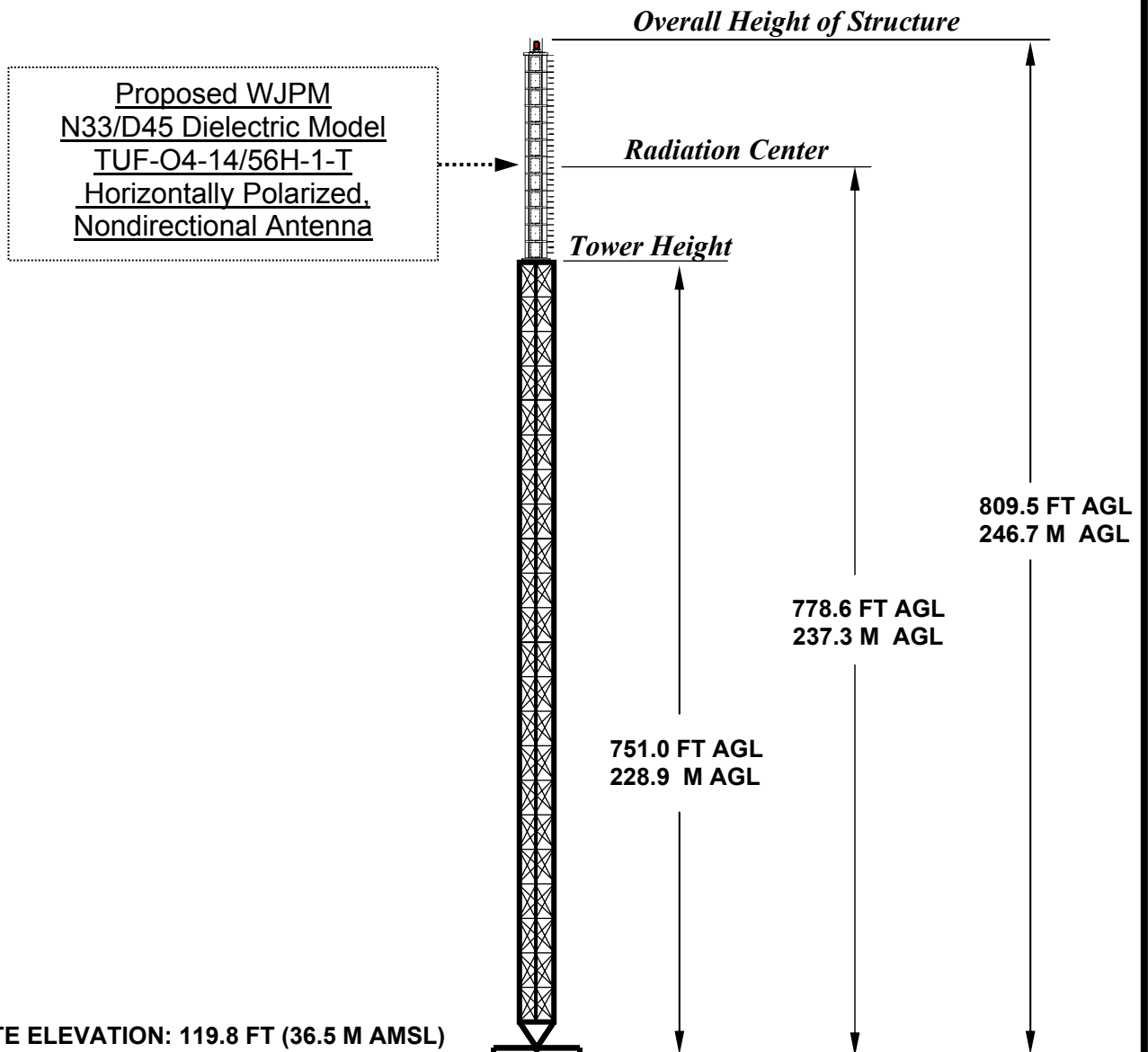
Florence, South Carolina

DATA FOR PROPOSED NONDIRECTIONAL TRANSMITTING ANTENNA

- A. **Antenna:** Dielectric Model TUF-O4-14/56H-1-T, Horizontally Polarized, Nondirectional, Top-mount, Broadband Antenna.
- B. **Electrical Beam Tilt:** 0.5°
- C. **Mechanical Beam Tilt:** None
- D.

<u>Maximum Power Gain</u>	<u>Horizontal Polarization</u>
Maximum: 29.1	(14.64 dB)
Horizontal: 19.4	(12.88 dB)
- E. **Length:** 54.5 feet (16.6 meters) not including lightning protector.
- F. **Transmitter Power Output:** 5.0 kW
- G. **Null Fill:** 22.9%
- H. **Transmission Line:** 6-1/8" 75-ohm EIA/DCA
- I. **Transmission Line Loss:** 0.126 dB/100-feet
- J. **Total Transmission Line:** 801 feet (244.1 meters)
- K. **Transmission Line Attenuation:** 1.01 dB
- L. **Combiner Loss:** 0.25 dB
- M. **Total Antenna System Loss:** 1.26 dB

WJPM-DT CHANNEL 45 TOWER ELEVATION VIEW



OVERALL HEIGHT AGL: 246.7 M
OVERALL HEIGHT AMSL: 283.2 M
RADIATION CENTER AGL: 237.3 M
RADIATION CENTER AMSL: 273.8 M
RADIATION CENTER HAAT: 242.4 M
AVG OF ALL NON-ODD RADIALS: 31.4 M
SITE HAAT: 5.1 M

COORDINATES (NAD 27):

N. LATITUDE 34° 16' 48"

W. LONGITUDE 79° 44' 35"

Antenna Structure Registration Number:

1059180

NOTE: NOT TO SCALE

KESSLER AND GEHMAN

TELECOMMUNICATIONS CONSULTING ENGINEERS

507 N.W. 60th Street, Suite C
Gainesville, Florida 32607

WJPM-DT CHANNEL 45

FLORENCE, SOUTH CAROLINA

20080620

EXHIBIT 3

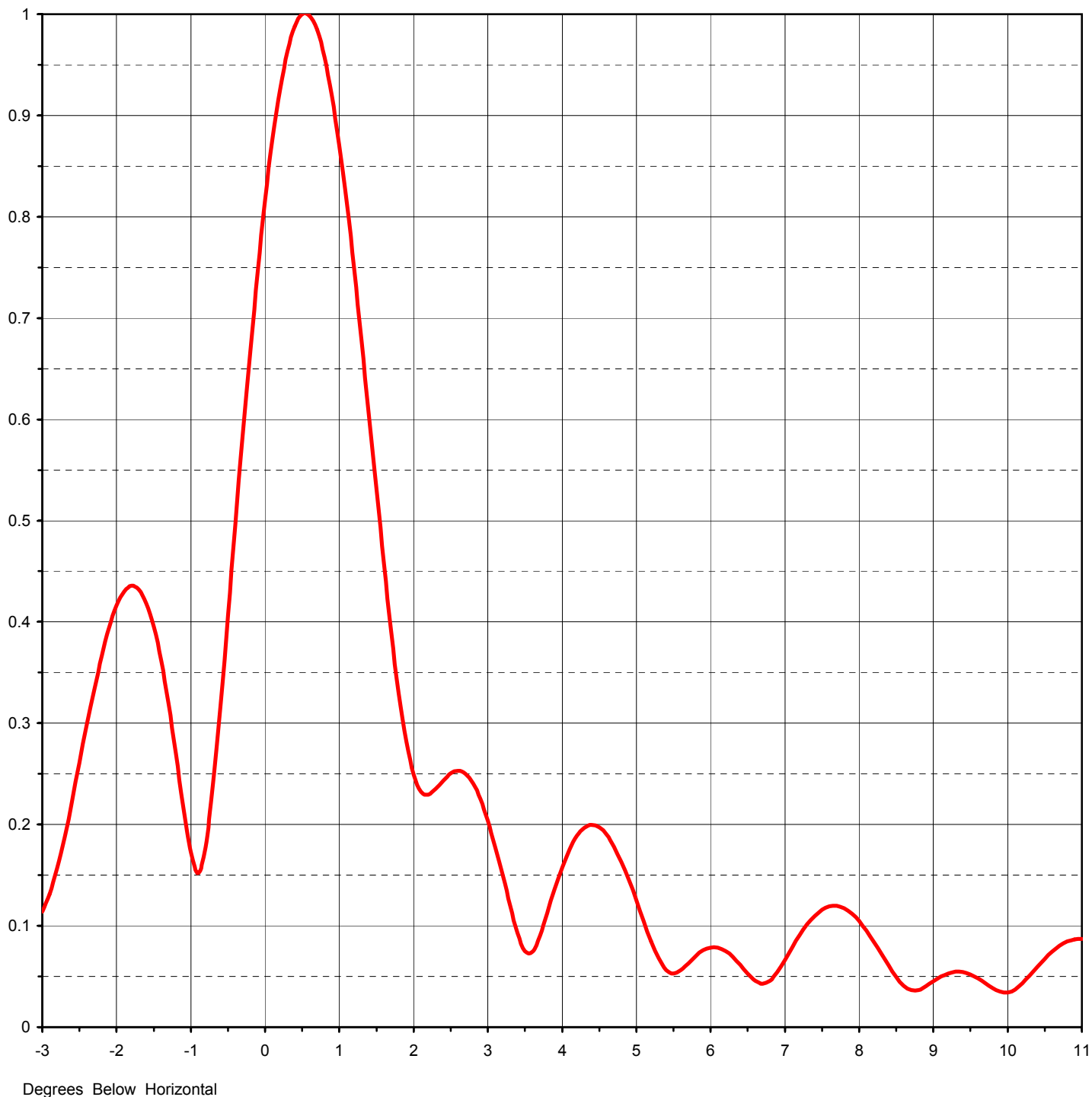


Proposal Number	DCA-10417	Revision:	1
Date	19-Mar-04		
Call Letters	WJPM-DT	Channel	45
Location	Florence, SC		
Customer	SCETV		
Antenna Type	TUF-O4-14/56H-1-T		

ELEVATION PATTERN

RMS Gain at Main Lobe	29.10 (14.64 dB)
RMS Gain at Horizontal	19.40 (12.88 dB)
Calculated / Measured	Calculated

Beam Tilt	0.50 deg
Frequency	659.00 MHz
Drawing #	14U291050



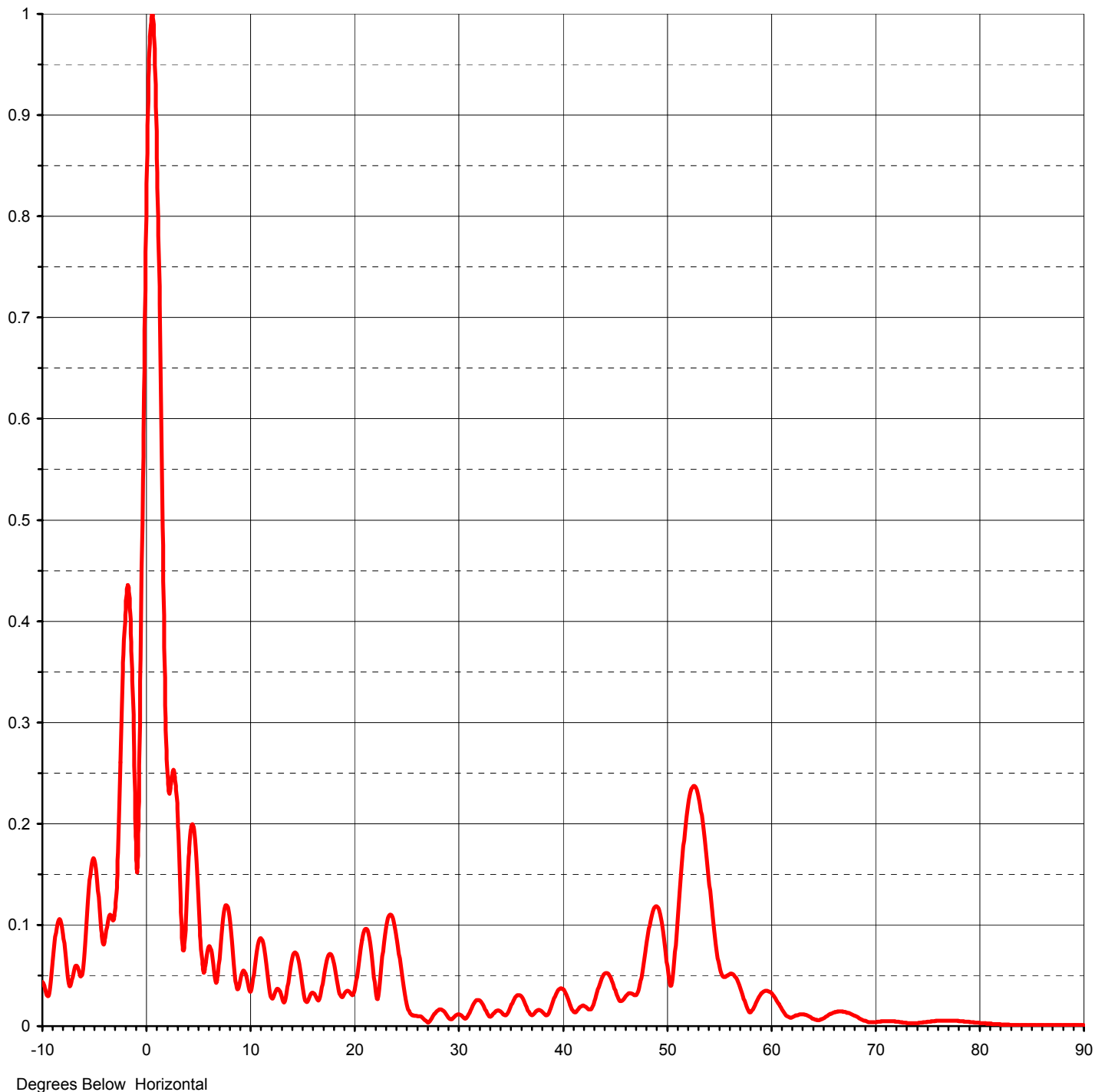


Proposal Number	DCA-10417	Revision:	1
Date	19-Mar-04		
Call Letters	WJPM-DT	Channel	45
Location	Florence, SC		
Customer	SCETV		
Antenna Type	TUF-O4-14/56H-1-T		

ELEVATION PATTERN

RMS Gain at Main Lobe	29.10 (14.64 dB)
RMS Gain at Horizontal	19.40 (12.88 dB)
Calculated / Measured	Calculated

Beam Tilt	0.50 deg
Frequency	659.00 MHz
Drawing #	14U291050-90



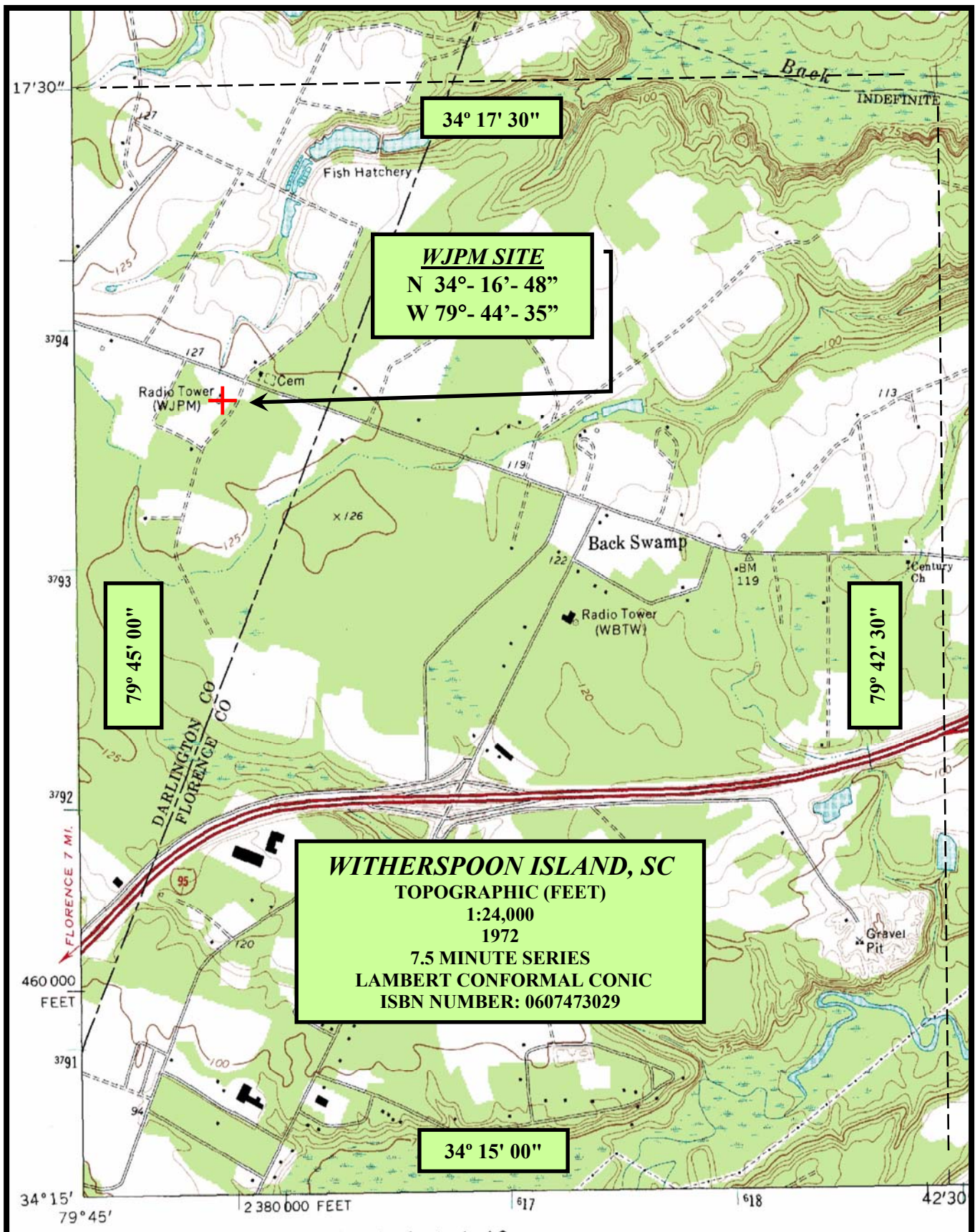


Proposal Number **DCA-10417** Revision: **1**
Date **19-Mar-04**
Call Letters **WJPM-DT** Channel **45**
Location **Florence, SC**
Customer **SCETV**
Antenna Type **TUF-O4-14/56H-1-T**

TABULATION OF ELEVATION PATTERN

Elevation Pattern Drawing #: **14U291050-90**

Angle	Field	Angle	Field	Angle	Field	Angle	Field	Angle	Field	Angle	Field
-10.0	0.044	2.4	0.244	10.6	0.068	30.5	0.009	51.0	0.093	71.5	0.005
-9.5	0.030	2.6	0.253	10.8	0.080	31.0	0.011	51.5	0.160	72.0	0.004
-9.0	0.064	2.8	0.241	11.0	0.087	31.5	0.022	52.0	0.212	72.5	0.004
-8.5	0.103	3.0	0.204	11.5	0.069	32.0	0.026	52.5	0.236	73.0	0.003
-8.0	0.091	3.2	0.149	12.0	0.031	32.5	0.019	53.0	0.231	73.5	0.003
-7.5	0.044	3.4	0.093	12.5	0.035	33.0	0.010	53.5	0.201	74.0	0.003
-7.0	0.054	3.6	0.075	13.0	0.032	33.5	0.013	54.0	0.154	74.5	0.004
-6.5	0.055	3.8	0.112	13.5	0.029	34.0	0.015	54.5	0.104	75.0	0.004
-6.0	0.066	4.0	0.158	14.0	0.063	34.5	0.011	55.0	0.064	75.5	0.005
-5.5	0.138	4.2	0.189	14.5	0.071	35.0	0.018	55.5	0.049	76.0	0.005
-5.0	0.164	4.4	0.200	15.0	0.046	35.5	0.028	56.0	0.051	76.5	0.005
-4.5	0.114	4.6	0.190	15.5	0.024	36.0	0.030	56.5	0.050	77.0	0.005
-4.0	0.084	4.8	0.163	16.0	0.033	36.5	0.021	57.0	0.041	77.5	0.005
-3.5	0.110	5.0	0.125	16.5	0.026	37.0	0.011	57.5	0.025	78.0	0.005
-3.0	0.114	5.2	0.085	17.0	0.042	37.5	0.014	58.0	0.014	78.5	0.005
-2.8	0.156	5.4	0.056	17.5	0.068	38.0	0.015	58.5	0.021	79.0	0.004
-2.6	0.223	5.6	0.056	18.0	0.066	38.5	0.011	59.0	0.030	79.5	0.004
-2.4	0.298	5.8	0.070	18.5	0.039	39.0	0.020	59.5	0.035	80.0	0.003
-2.2	0.367	6.0	0.079	19.0	0.030	39.5	0.034	60.0	0.033	80.5	0.003
-2.0	0.416	6.2	0.075	19.5	0.035	40.0	0.037	60.5	0.027	81.0	0.002
-1.8	0.436	6.4	0.062	20.0	0.032	40.5	0.029	61.0	0.018	81.5	0.002
-1.6	0.418	6.6	0.046	20.5	0.064	41.0	0.016	61.5	0.011	82.0	0.002
-1.4	0.361	6.8	0.046	21.0	0.094	41.5	0.016	62.0	0.008	82.5	0.001
-1.2	0.270	7.0	0.066	21.5	0.087	42.0	0.020	62.5	0.010	83.0	0.001
-1.0	0.172	7.2	0.091	22.0	0.043	42.5	0.017	63.0	0.012	83.5	0.001
-0.8	0.177	7.4	0.110	22.5	0.042	43.0	0.021	63.5	0.011	84.0	0.001
-0.6	0.319	7.6	0.119	23.0	0.091	43.5	0.038	64.0	0.008	84.5	0.001
-0.4	0.496	7.8	0.117	23.5	0.110	44.0	0.051	64.5	0.006	85.0	0.001
-0.2	0.668	8.0	0.105	24.0	0.094	44.5	0.051	65.0	0.008	85.5	0.001
0.0	0.816	8.2	0.084	24.5	0.060	45.0	0.038	65.5	0.011	86.0	0.001
0.2	0.926	8.4	0.060	25.0	0.026	45.5	0.025	66.0	0.013	86.5	0.001
0.4	0.988	8.6	0.041	25.5	0.012	46.0	0.028	66.5	0.014	87.0	0.001
0.6	0.999	8.8	0.037	26.0	0.010	46.5	0.033	67.0	0.014	87.5	0.001
0.8	0.958	9.0	0.045	26.5	0.009	47.0	0.030	67.5	0.013	88.0	0.001
1.0	0.871	9.2	0.053	27.0	0.004	47.5	0.042	68.0	0.010	88.5	0.001
1.2	0.748	9.4	0.054	27.5	0.008	48.0	0.074	68.5	0.007	89.0	0.001
1.4	0.604	9.6	0.048	28.0	0.015	48.5	0.105	69.0	0.005	89.5	0.001
1.6	0.457	9.8	0.043	28.5	0.016	49.0	0.118	69.5	0.004	90.0	0.001
1.8	0.330	10.0	0.035	29.0	0.010	49.5	0.106	70.0	0.004		
2.0	0.249	10.2	0.037	29.5	0.008	50.0	0.068	70.5	0.005		
2.2	0.229	10.4	0.051	30.0	0.012	50.5	0.040	71.0	0.005		

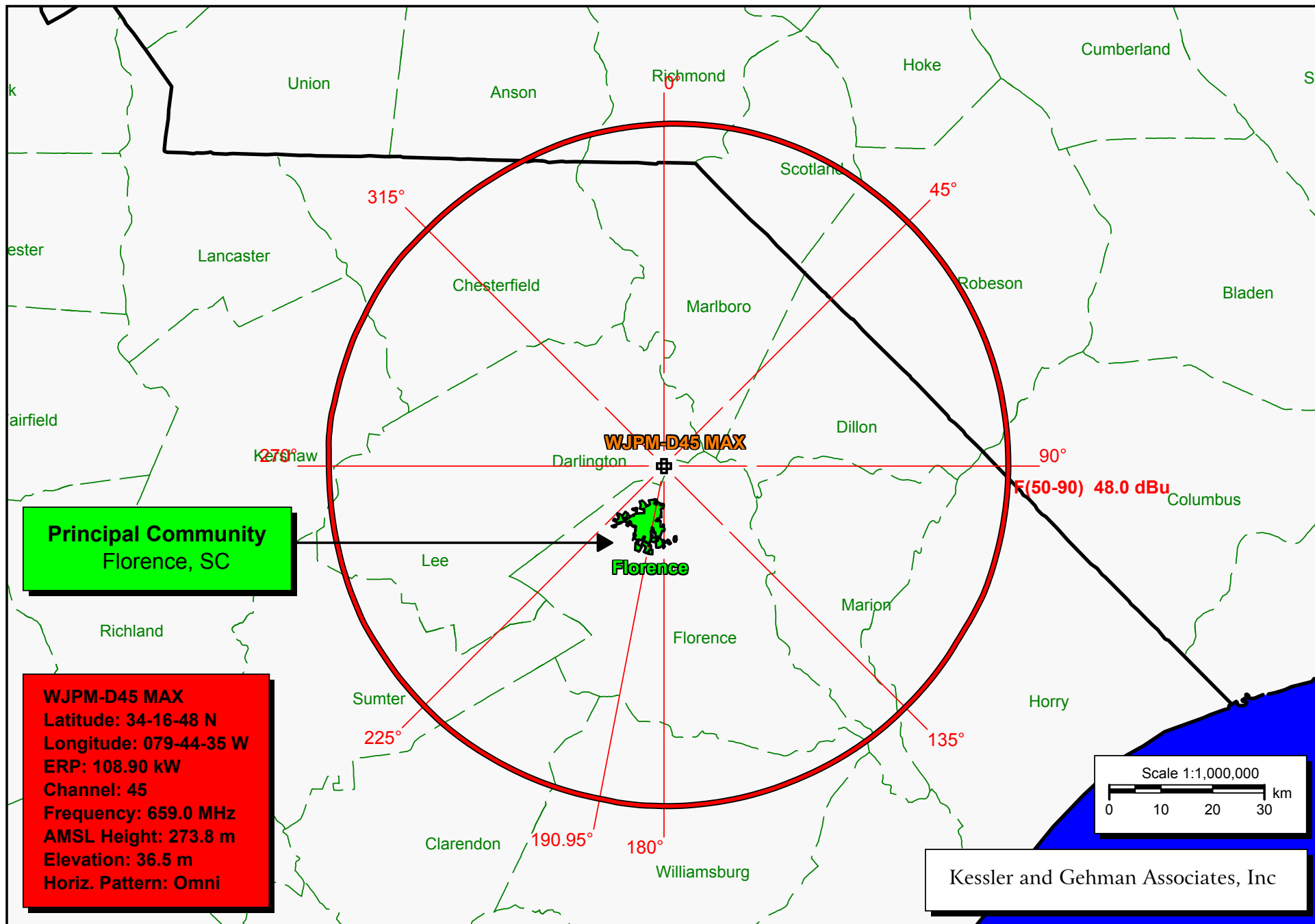


KESSLER AND GEHMAN
TELECOMMUNICATIONS CONSULTING ENGINEERS
507 N.W. 60th Street, Suite C
Gainesville, Florida 32607

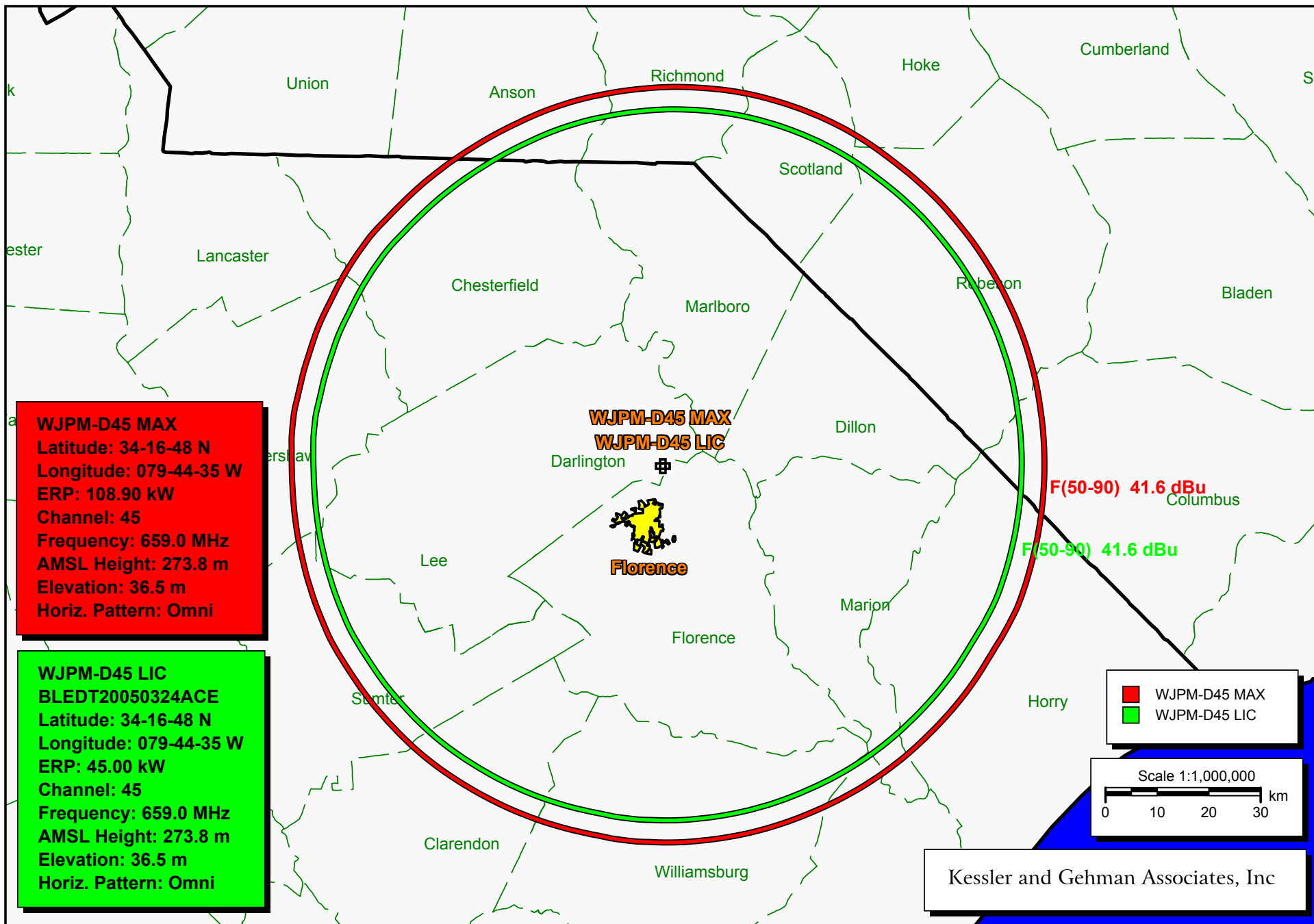
WJPM-DT CHANNEL 45
FLORENCE, SOUTH CAROLINA

20080620

EXHIBIT 7



WJPM-DT Channel 45 F(50,90) 48.0 dBuV/m Principal Community Contour



WJPM-D45 LIC (green) vs. WJPM-D45 Proposed (red)

TV INTERFERENCE and SPACING ANALYSIS PROGRAM

Date: 06-15-2008 Time: 16:18:37

Record Selected for Analysis

WJPM-D45 USERRECORD-01 FLORENCE SC US
Channel 45 ERP 108.9 kW HAAT 243. m RCAMSL 00274 m
Latitude 034-16-48 Longitude 0079-44-35
Status APP Zone 2 Border
Dir Antenna Make usr Model USRPAT01 Beam tilt N Ref Azimuth 0.
Last update Cutoff date Docket
Comments
Applicant

Cell Size for Service Analysis 2.0 km/side

Distance Increments for Longley-Rice Analysis 1.00 km

Facility meets maximum height/power limits

Azimuth (Deg)	ERP (kW)	HAAT (m)	41.0 dBu F(50,90) (km)
0.0	108.900	248.8	74.6
45.0	108.900	257.8	75.3
90.0	108.900	255.5	75.1
135.0	108.900	246.0	74.4
180.0	108.900	242.1	74.1
225.0	108.900	239.1	73.9
270.0	108.900	226.9	73.0
315.0	108.900	224.9	72.9

Evaluation toward Class A Stations

No Spacing violations or contour overlap to Class A stations

Class A Evaluation Complete

SPACING VIOLATION FOUND BETWEEN STATION

WJPM-D45 45 FLORENCE SC USERRECORD01

and station

SHORT TO: WJPM-TV 45 FLORENCE SC BDTV 1401
 34 -16-48 079 -44-35
 Req. separation 223.7 Actual separation 0.0 Short 223.7 km

LANDMOBILE SPACING VIOLATIONS FOUND

NONE

Proposed facility OK to FCC Monitoring Stations

Proposed facility OK toward West Virginia quite zone

Proposed facility OK toward Table Mountain

Proposed facility is beyond the Canadian coordination distance

Proposed facility is beyond the Mexican coordination distance

Proposed station is OK toward AM broadcast stations

Start of Interference Analysis

Channel	Proposed Station Call	City/State	ARN
45	WJPM-D45	FLORENCE SC	USERRECORD01

Stations Potentially Affected by Proposed Station

Chan	Call	City/State	Dist(km)	Status	Application	Ref. No.
44	WUNG-TV	CONCORD NC	143.6	LIC	BDTV	-0952
44	WECT	WILMINGTON NC	139.1	LIC	BDTV	-0985
44	WJWJ-TV	BEAUFORT SC	194.8	LIC	BDTV	-1384
45	WGNM	MACON GA	391.6	LIC	BDTV	-0417
45	WYCW	ASHEVILLE NC	276.9	LIC	BDTV	-0943
46	WWAY	WILMINGTON NC	143.9	LIC	BDTV	-0986

%%%

Analysis of Interference to Affected Station 1

Analysis of current record

Channel	Call	City/State	Application	Ref. No.
44	WUNG-TV	CONCORD NC	BDTV	-0952

Stations Potentially Affecting This Station

Chan	Call	City/State	Dist(km)	Status	Application	Ref. No.
43	WLXI-TV	GREENSBORO NC	90.8	LIC	BDTV	-0960
43	WRET-TV	SPARTANBURG SC	121.9	LIC	BDTV	-1414
44	WHSB-TV	MONROE GA	387.3	LIC	BDTV	-0418

44	WTSF	ASHLAND KY	375.7	LIC	BDTV	-0632
44	WECT	WILMINGTON NC	246.0	LIC	BDTV	-0985
44	WJWJ-TV	BEAUFORT SC	294.3	LIC	BDTV	-1384
44	WCVW	RICHMOND VA	360.1	LIC	BDTV	-1673
45	WYCW	ASHEVILLE NC	176.6	LIC	BDTV	-0943
45	WJPM-D45	FLORENCE SC	143.6	APP	USERRECORD-01	

Total scenarios = 1

Result key: 1
Scenario 1 Affected station 1
Before Analysis

Results for: 44A NC CONCORD BDTV 0952 LIC
HAAT 422.0 m, ATV ERP 149.0 kW

	POPULATION	AREA (sq km)
within Noise Limited Contour	2647164	25512.1
not affected by terrain losses	2633701	25228.6
lost to NTSC IX	0	0.0
lost to additional IX by ATV	96061	1034.1
lost to ATV IX only	96061	1034.1
lost to all IX	96061	1034.1

Potential Interfering Stations Included in above Scenario 1

43A NC GREENSBORO	BDTV	0960	LIC
43A SC SPARTANBURG	BDTV	1414	LIC
44A NC WILMINGTON	BDTV	0985	LIC
45A NC ASHEVILLE	BDTV	0943	LIC

After Analysis

Results for: 44A NC CONCORD BDTV 0952 LIC
HAAT 422.0 m, ATV ERP 149.0 kW

	POPULATION	AREA (sq km)
within Noise Limited Contour	2647164	25512.1
not affected by terrain losses	2633701	25228.6
lost to NTSC IX	0	0.0
lost to additional IX by ATV	96061	1034.1
lost to ATV IX only	96061	1034.1
lost to all IX	96061	1034.1

Potential Interfering Stations Included in above Scenario 1

43A NC GREENSBORO	BDTV	0960	LIC
43A SC SPARTANBURG	BDTV	1414	LIC
44A NC WILMINGTON	BDTV	0985	LIC
45A NC ASHEVILLE	BDTV	0943	LIC
45A SC FLORENCE	USERRECORD01		APP
*Percent Service lost without proposal:	0.0	to BDTV	0952
*Percent Service lost with proposal:	0.0	to BDTV	0952

#####

Analysis of Interference to Affected Station 2

Analysis of current record

Channel	Call	City/State	Application	Ref. No.
44	WECT	WILMINGTON NC	BDTV	-0985

Stations Potentially Affecting This Station

Chan	Call	City/State	Dist(km)	Status	Application	Ref. No.
43	WLXI-TV	GREENSBORO NC	224.9	LIC	BDTV	-0960
44	WUNG-TV	CONCORD NC	246.0	LIC	BDTV	-0952
44	WJWJ-TV	BEAUFORT SC	289.3	LIC	BDTV	-1384
44	WCVW	RICHMOND VA	359.2	LIC	BDTV	-1673
45	WJPM-D45	FLORENCE SC	139.1	APP	USERRECORD-01	

Proposal causes no interference

#####

Analysis of Interference to Affected Station 3

Analysis of current record

Channel	Call	City/State	Application	Ref. No.
44	WJWJ-TV	BEAUFORT SC	BDTV	-1384

Stations Potentially Affecting This Station

Chan	Call	City/State	Dist(km)	Status	Application	Ref. No.
44	WJEB-TV	JACKSONVILLE FL	283.4	LIC	BDTV	-0319
44	WHSB-TV	MONROE GA	360.7	LIC	BDTV	-0418
44	WUNG-TV	CONCORD NC	294.3	LIC	BDTV	-0952
44	WECT	WILMINGTON NC	289.3	LIC	BDTV	-0985
45	WJPM-D45	FLORENCE SC	194.8	APP	USERRECORD-01	

Proposed station is beyond the site to nearest cell evaluation distance

#####

Analysis of Interference to Affected Station 4

Analysis of current record

Channel	Call	City/State	Application	Ref. No.
45	WGNM	MACON GA	BDTV	-0417

Stations Potentially Affecting This Station

Chan	Call	City/State	Dist(km)	Status	Application	Ref. No.
44	WGIQ	LOUISVILLE AL	211.2	LIC	BDTV	-0042
44	WHSB-TV	MONROE GA	132.0	LIC	BDTV	-0418
45	WPXH	GADSDEN AL	298.0	LIC	BDTV	-0034
45	WYCW	ASHEVILLE NC	288.6	LIC	BDTV	-0943
45	WJPM-D45	FLORENCE SC	391.6	APP	USERRECORD-01	

Proposal causes no interference

#####

Analysis of Interference to Affected Station 5

Analysis of current record

Channel	Call	City/State	Application	Ref. No.
45	WYCW	ASHEVILLE NC	BDTV	-0943

Stations Potentially Affecting This Station

Chan	Call	City/State	Dist(km)	Status	Application	Ref. No.
44	WUNG-TV	CONCORD NC	176.6	LIC	BDTV	-0952
45	WPXH	GADSDEN AL	388.2	LIC	BDTV	-0034
45	WGNM	MACON GA	288.6	LIC	BDTV	-0417
45	WJPM-D45	FLORENCE SC	276.9	APP	USERRECORD-01	

Total scenarios = 1

Result key: 2
Scenario 1 Affected station 5
Before Analysis

Results for: 45A NC ASHEVILLE BDTV 0943 LIC

HAAT 555.0 m, ATV ERP 1000.0 kW

	POPULATION	AREA (sq km)
within Noise Limited Contour	2347414	42570.7
not affected by terrain losses	2048081	34771.0
lost to NTSC IX	0	0.0
lost to additional IX by ATV	2489	220.0
lost to ATV IX only	2489	220.0
lost to all IX	2489	220.0

Potential Interfering Stations Included in above Scenario 1

44A NC CONCORD	BDTV	0952	LIC
45A GA MACON	BDTV	0417	LIC

After Analysis

Results for: 45A NC ASHEVILLE BDTV 0943 LIC

HAAT 555.0 m, ATV ERP 1000.0 kW

	POPULATION	AREA (sq km)
within Noise Limited Contour	2347414	42570.7
not affected by terrain losses	2048081	34771.0
lost to NTSC IX	0	0.0
lost to additional IX by ATV	3695	244.0
lost to ATV IX only	3695	244.0
lost to all IX	3695	244.0

Potential Interfering Stations Included in above Scenario 1

44A NC CONCORD	BDTV	0952	LIC
----------------	------	------	-----

45A GA MACON	BDTV	0417	LIC	
45A SC FLORENCE	USERRECORD01		APP	
*Percent Service lost without proposal:	0.0	to BDTV	0943	
*Percent Service lost with proposal:	0.1	to BDTV	0943	

#####

Analysis of Interference to Affected Station 6

Analysis of current record

Channel	Call	City/State	Application	Ref. No.
46	WWAY	WILMINGTON NC	BDTV	-0986

Stations Potentially Affecting This Station

Chan	Call	City/State	Dist(km)	Status	Application	Ref. No.
46	WHTJ	CHARLOTTESVILLE VA	429.0	LIC	BDTV	-1649
46	WPXV	NORFOLK VA	334.4	LIC	BDTV	-1664
47	WCSC-TV	CHARLESTON SC	193.9	LIC	BDTV	-1389
45	WJPM-D45	FLORENCE SC	143.9	APP	USERRECORD-01	

Total scenarios = 1

Result key: 3

Scenario 1 Affected station 6
Before Analysis

Results for: 46A NC WILMINGTON BDTV 0986 LIC
HAAT 594.0 m, ATV ERP 1000.0 kW

	POPULATION	AREA (sq km)
within Noise Limited Contour	1064124	44371.4
not affected by terrain losses	1060836	44367.4
lost to NTSC IX	0	0.0
lost to additional IX by ATV	33	4.0
lost to ATV IX only	33	4.0
lost to all IX	33	4.0

Potential Interfering Stations Included in above Scenario 1

47A SC CHARLESTON	BDTV	1389	LIC
-------------------	------	------	-----

After Analysis

Results for: 46A NC WILMINGTON BDTV 0986 LIC
HAAT 594.0 m, ATV ERP 1000.0 kW

	POPULATION	AREA (sq km)
within Noise Limited Contour	1064124	44371.4
not affected by terrain losses	1060836	44367.4
lost to NTSC IX	0	0.0
lost to additional IX by ATV	65	12.0
lost to ATV IX only	65	12.0
lost to all IX	65	12.0

Potential Interfering Stations Included in above Scenario 1

47A SC CHARLESTON	BDTV	1389	LIC	
45A SC FLORENCE	USERRECORD01		APP	
*Percent Service lost without proposal:	0.0	to BDTV	0986	
*Percent Service lost with proposal:	0.0	to BDTV	0986	

#####

Analysis of Interference to Affected Station 7

Analysis of current record

Channel	Call	City/State	Application Ref. No.
45	WJPM-D45	FLORENCE SC	USERRECORD-01

Stations Potentially Affecting This Station

Chan	Call	City/State	Dist(km)	Status	Application Ref. No.
44	WUNG-TV	CONCORD NC	143.6	LIC	BDTV -0952
44	WECT	WILMINGTON NC	139.1	LIC	BDTV -0985
44	WJWJ-TV	BEAUFORT SC	194.8	LIC	BDTV -1384
45	WGNM	MACON GA	391.6	LIC	BDTV -0417
45	WYCW	ASHEVILLE NC	276.9	LIC	BDTV -0943
46	WWAY	WILMINGTON NC	143.9	LIC	BDTV -0986

Total scenarios = 1

Result key: 4
Scenario 1 Affected station 7
Before Analysis

Results for: 45A SC FLORENCE USERRECORD01 APP
HAAT 243.0 m, ATV ERP 108.9 kW

	POPULATION	AREA (sq km)
within Noise Limited Contour	593061	16984.1
not affected by terrain losses	593050	16976.1
lost to NTSC IX	0	0.0
lost to additional IX by ATV	6833	207.7
lost to ATV IX only	6833	207.7
lost to all IX	6833	207.7

Potential Interfering Stations Included in above Scenario 1

45A NC ASHEVILLE	BDTV	0943	LIC
46A NC WILMINGTON	BDTV	0986	LIC

#####

FINISHED FINISHED FINISHED FINISHED FINISHED FINISHED

TV INTERFERENCE and SPACING ANALYSIS PROGRAM

Date: 06-15-2008 Time: 16:22:27

Record Selected for Analysis

WJPM-D45 USERRECORD-01 FLORENCE_2 SC US
Channel 45 ERP 108.9 kW HAAT 243. m RCAMSL 00274 m
Latitude 034-16-48 Longitude 0079-44-35
Status APP Zone 2 Border
Dir Antenna Make usr Model USRPAT01 Beam tilt N Ref Azimuth 0.
Last update Cutoff date Docket
Comments
Applicant

Cell Size for Service Analysis 2.0 km/side

Distance Increments for Longley-Rice Analysis 1.00 km

Facility meets maximum height/power limits

Azimuth (Deg)	ERP (kW)	HAAT (m)	41.0 dBu F(50,90) (km)
0.0	108.900	248.8	74.6
45.0	108.900	257.8	75.3
90.0	108.900	255.5	75.1
135.0	108.900	246.0	74.4
180.0	108.900	242.1	74.1
225.0	108.900	239.1	73.9
270.0	108.900	226.9	73.0
315.0	108.900	224.9	72.9

Evaluation toward Class A Stations

No Spacing violations or contour overlap to Class A stations

Class A Evaluation Complete

SPACING VIOLATION FOUND BETWEEN STATION

WJPM-D45 45 FLORENCE_2 SC USERRECORD01

and station

SHORT TO: WJPM-TV 45 FLORENCE SC BDTV 1401
 34 -16-48 079 -44-35
 Req. separation 223.7 Actual separation 0.0 Short 223.7 km

LANDMOBILE SPACING VIOLATIONS FOUND

NONE

Proposed facility OK to FCC Monitoring Stations

Proposed facility OK toward West Virginia quite zone

Proposed facility OK toward Table Mountain

Proposed facility is beyond the Canadian coordination distance

Proposed facility is beyond the Mexican coordination distance

Proposed station is OK toward AM broadcast stations

Start of Interference Analysis

Channel	Proposed Station Call	City/State	ARN
45	WJPM-D45	FLORENCE_2 SC	USERRECORD01

Stations Potentially Affected by Proposed Station

Chan	Call	City/State	Dist(km)	Status	Application	Ref. No.
44	WUNG-TV	CONCORD NC	143.6	LIC	BDTV	-0952
44	WECT	WILMINGTON NC	139.1	LIC	BDTV	-0985
44	WJWJ-TV	BEAUFORT SC	194.8	LIC	BDTV	-1384
45	WGNM	MACON GA	391.6	LIC	BDTV	-0417
45	WYCW	ASHEVILLE NC	276.9	LIC	BDTV	-0943
45	WJPM-TV	FLORENCE SC	0.0	LIC	BDTV	-1401
46	WWAY	WILMINGTON NC	143.9	LIC	BDTV	-0986

%%%

Analysis of Interference to Affected Station 1

Analysis of current record

Channel	Call	City/State	Application	Ref. No.
44	WUNG-TV	CONCORD NC	BDTV	-0952

Stations Potentially Affecting This Station

Chan	Call	City/State	Dist(km)	Status	Application	Ref. No.
43	WLXI-TV	GREENSBORO NC	90.8	LIC	BDTV	-0960
43	WRET-TV	SPARTANBURG SC	121.9	LIC	BDTV	-1414

44	WHSB-TV	MONROE GA	387.3	LIC	BDTV	-0418
44	WTSF	ASHLAND KY	375.7	LIC	BDTV	-0632
44	WECT	WILMINGTON NC	246.0	LIC	BDTV	-0985
44	WJWJ-TV	BEAUFORT SC	294.3	LIC	BDTV	-1384
44	WCVW	RICHMOND VA	360.1	LIC	BDTV	-1673
45	WYCW	ASHEVILLE NC	176.6	LIC	BDTV	-0943
45	WJPM-TV	FLORENCE SC	143.6	LIC	BDTV	-1401
45	WJPM-D45	FLORENCE_2 SC	143.6	APP	USERRECORD-01	

Total scenarios = 2

Result key: 1
 Scenario 1 Affected station 1
 Before Analysis

Results for: 44A NC CONCORD BDTV 0952 LIC
 HAAT 422.0 m, ATV ERP 149.0 kW

	POPULATION	AREA (sq km)
within Noise Limited Contour	2647164	25512.1
not affected by terrain losses	2633701	25228.6
lost to NTSC IX	0	0.0
lost to additional IX by ATV	96061	1034.1
lost to ATV IX only	96061	1034.1
lost to all IX	96061	1034.1

Potential Interfering Stations Included in above Scenario 1

43A NC GREENSBORO	BDTV	0960	LIC
43A SC SPARTANBURG	BDTV	1414	LIC
44A NC WILMINGTON	BDTV	0985	LIC
45A NC ASHEVILLE	BDTV	0943	LIC
45A SC FLORENCE	BDTV	1401	LIC

After Analysis

Results for: 44A NC CONCORD BDTV 0952 LIC
 HAAT 422.0 m, ATV ERP 149.0 kW

	POPULATION	AREA (sq km)
within Noise Limited Contour	2647164	25512.1
not affected by terrain losses	2633701	25228.6
lost to NTSC IX	0	0.0
lost to additional IX by ATV	96061	1034.1
lost to ATV IX only	96061	1034.1
lost to all IX	96061	1034.1

Potential Interfering Stations Included in above Scenario 1

43A NC GREENSBORO	BDTV	0960	LIC
43A SC SPARTANBURG	BDTV	1414	LIC
44A NC WILMINGTON	BDTV	0985	LIC
45A NC ASHEVILLE	BDTV	0943	LIC
45A SC FLORENCE	BDTV	1401	LIC
45A SC FLORENCE_2	USERRECORD01		APP
*Percent Service lost without proposal:	0.0	to BDTV	0952
*Percent Service lost with proposal:	0.0	to BDTV	0952

Result key: 2
 Scenario 2 Affected station 1
 Before Analysis

Results for: 44A NC CONCORD BDTV 0952 LIC
 HAAT 422.0 m, ATV ERP 149.0 kW

	POPULATION	AREA (sq km)
within Noise Limited Contour	2647164	25512.1
not affected by terrain losses	2633701	25228.6
lost to NTSC IX	0	0.0
lost to additional IX by ATV	96061	1034.1
lost to ATV IX only	96061	1034.1
lost to all IX	96061	1034.1

Potential Interfering Stations Included in above Scenario 2

43A NC GREENSBORO	BDTV	0960	LIC
43A SC SPARTANBURG	BDTV	1414	LIC
44A NC WILMINGTON	BDTV	0985	LIC
45A NC ASHEVILLE	BDTV	0943	LIC
45A SC FLORENCE	BDTV	1401	LIC

After Analysis

Results for: 44A NC CONCORD BDTV 0952 LIC
 HAAT 422.0 m, ATV ERP 149.0 kW

	POPULATION	AREA (sq km)
within Noise Limited Contour	2647164	25512.1
not affected by terrain losses	2633701	25228.6
lost to NTSC IX	0	0.0
lost to additional IX by ATV	96061	1034.1
lost to ATV IX only	96061	1034.1
lost to all IX	96061	1034.1

Potential Interfering Stations Included in above Scenario 2

43A NC GREENSBORO	BDTV	0960	LIC
43A SC SPARTANBURG	BDTV	1414	LIC
44A NC WILMINGTON	BDTV	0985	LIC
45A NC ASHEVILLE	BDTV	0943	LIC
45A SC FLORENCE	BDTV	1401	LIC
45A SC FLORENCE_2	USERRECORD01		APP
*Percent Service lost without proposal:	0.0	to BDTV	0952
*Percent Service lost with proposal:	0.0	to BDTV	0952

#####

Analysis of Interference to Affected Station 2

Analysis of current record

Channel	Call	City/State	Application	Ref. No.
44	WECT	WILMINGTON NC	BDTV	-0985

Stations Potentially Affecting This Station

Chan	Call	City/State	Dist(km)	Status	Application	Ref. No.
43	WLXI-TV	GREENSBORO NC	224.9	LIC	BDTV	-0960
44	WUNG-TV	CONCORD NC	246.0	LIC	BDTV	-0952
44	WJWJ-TV	BEAUFORT SC	289.3	LIC	BDTV	-1384
44	WCVW	RICHMOND VA	359.2	LIC	BDTV	-1673
45	WJPM-TV	FLORENCE SC	139.1	LIC	BDTV	-1401
45	WJPM-D45	FLORENCE_2 SC	139.1	APP	USERRECORD-01	

Proposal causes no interference

#####

Analysis of Interference to Affected Station 3

Analysis of current record

Channel	Call	City/State	Application	Ref. No.
44	WJWJ-TV	BEAUFORT SC	BDTV	-1384

Stations Potentially Affecting This Station

Chan	Call	City/State	Dist(km)	Status	Application	Ref. No.
44	WJEB-TV	JACKSONVILLE FL	283.4	LIC	BDTV	-0319
44	WHSB-TV	MONROE GA	360.7	LIC	BDTV	-0418
44	WUNG-TV	CONCORD NC	294.3	LIC	BDTV	-0952
44	WECT	WILMINGTON NC	289.3	LIC	BDTV	-0985
45	WJPM-TV	FLORENCE SC	194.8	LIC	BDTV	-1401
45	WJPM-D45	FLORENCE_2 SC	194.8	APP	USERRECORD-01	

Proposed station is beyond the site to
nearest cell evaluation distance

#####

Analysis of Interference to Affected Station 4

Analysis of current record

Channel	Call	City/State	Application	Ref. No.
45	WGNM	MACON GA	BDTV	-0417

Stations Potentially Affecting This Station

Chan	Call	City/State	Dist(km)	Status	Application	Ref. No.
44	WGIQ	LOUISVILLE AL	211.2	LIC	BDTV	-0042
44	WHSB-TV	MONROE GA	132.0	LIC	BDTV	-0418
45	WPXH	GADSDEN AL	298.0	LIC	BDTV	-0034
45	WYCW	ASHEVILLE NC	288.6	LIC	BDTV	-0943
45	WJPM-TV	FLORENCE SC	391.6	LIC	BDTV	-1401
45	WJPM-D45	FLORENCE_2 SC	391.6	APP	USERRECORD-01	

Proposal causes no interference

#####

Analysis of Interference to Affected Station 5

Analysis of current record

Channel	Call	City/State	Application	Ref. No.
45	WYCW	ASHEVILLE NC	BDTV	-0943

Stations Potentially Affecting This Station

Chan	Call	City/State	Dist(km)	Status	Application	Ref. No.
44	WUNG-TV	CONCORD NC	176.6	LIC	BDTV	-0952
45	WPXH	GADSDEN AL	388.2	LIC	BDTV	-0034
45	WGNM	MACON GA	288.6	LIC	BDTV	-0417
45	WJPM-TV	FLORENCE SC	276.9	LIC	BDTV	-1401
45	WJPM-D45	FLORENCE_2 SC	276.9	APP	USERRECORD-01	

Total scenarios = 2

Result key: 3
Scenario 1 Affected station 5
Before Analysis

Results for: 45A NC ASHEVILLE BDTV 0943 LIC
HAAT 555.0 m, ATV ERP 1000.0 kW

	POPULATION	AREA (sq km)
within Noise Limited Contour	2347414	42570.7
not affected by terrain losses	2048081	34771.0
lost to NTSC IX	0	0.0
lost to additional IX by ATV	2833	236.0
lost to ATV IX only	2833	236.0
lost to all IX	2833	236.0

Potential Interfering Stations Included in above Scenario 1

44A NC CONCORD	BDTV	0952	LIC
45A GA MACON	BDTV	0417	LIC
45A SC FLORENCE	BDTV	1401	LIC

After Analysis

Results for: 45A NC ASHEVILLE BDTV 0943 LIC
HAAT 555.0 m, ATV ERP 1000.0 kW

	POPULATION	AREA (sq km)
within Noise Limited Contour	2347414	42570.7
not affected by terrain losses	2048081	34771.0
lost to NTSC IX	0	0.0
lost to additional IX by ATV	3695	244.0
lost to ATV IX only	3695	244.0
lost to all IX	3695	244.0

Potential Interfering Stations Included in above Scenario 1

44A NC CONCORD	BDTV	0952	LIC
45A GA MACON	BDTV	0417	LIC
45A SC FLORENCE	BDTV	1401	LIC

45A SC FLORENCE_2 USERRECORD01 APP
 *Percent Service lost without proposal: 0.0 to BDTV 0943
 *Percent Service lost with proposal: 0.0 to BDTV 0943

Result key: 4
 Scenario 2 Affected station 5
 Before Analysis

Results for: 45A NC ASHEVILLE BDTV 0943 LIC
 HAAT 555.0 m, ATV ERP 1000.0 kW
 POPULATION AREA (sq km)
 within Noise Limited Contour 2347414 42570.7
 not affected by terrain losses 2048081 34771.0
 lost to NTSC IX 0 0.0
 lost to additional IX by ATV 2833 236.0
 lost to ATV IX only 2833 236.0
 lost to all IX 2833 236.0

Potential Interfering Stations Included in above Scenario 2

44A NC CONCORD BDTV 0952 LIC
 45A GA MACON BDTV 0417 LIC
 45A SC FLORENCE BDTV 1401 LIC

After Analysis

Results for: 45A NC ASHEVILLE BDTV 0943 LIC
 HAAT 555.0 m, ATV ERP 1000.0 kW
 POPULATION AREA (sq km)
 within Noise Limited Contour 2347414 42570.7
 not affected by terrain losses 2048081 34771.0
 lost to NTSC IX 0 0.0
 lost to additional IX by ATV 3695 244.0
 lost to ATV IX only 3695 244.0
 lost to all IX 3695 244.0

Potential Interfering Stations Included in above Scenario 2

44A NC CONCORD BDTV 0952 LIC
 45A GA MACON BDTV 0417 LIC
 45A SC FLORENCE BDTV 1401 LIC
 45A SC FLORENCE_2 USERRECORD01 APP
 *Percent Service lost without proposal: 0.0 to BDTV 0943
 *Percent Service lost with proposal: 0.0 to BDTV 0943

#####

Analysis of Interference to Affected Station 6

Analysis of current record
 Channel Call City/State Application Ref. No.
 45 WJPM-TV FLORENCE SC BDTV -1401

Stations Potentially Affecting This Station

Chan	Call	City/State	Dist(km)	Status	Application	Ref. No.
44	WUNG-TV	CONCORD NC	143.6	LIC	BDTV	-0952
44	WECT	WILMINGTON NC	139.1	LIC	BDTV	-0985
44	WJWJ-TV	BEAUFORT SC	194.8	LIC	BDTV	-1384
45	WGNM	MACON GA	391.6	LIC	BDTV	-0417
45	WYCW	ASHEVILLE NC	276.9	LIC	BDTV	-0943
46	WWAY	WILMINGTON NC	143.9	LIC	BDTV	-0986
45	WJPM-D45	FLORENCE_2 SC	0.0	APP	USERRECORD-01	

Total scenarios = 2

Result key: 5
Scenario 1 Affected station 6
Before Analysis

Results for: 45A SC FLORENCE BDTV 1401 LIC
HAAT 242.0 m, ATV ERP 45.0 kW

	POPULATION	AREA (sq km)
within Noise Limited Contour	496562	14871.5
not affected by terrain losses	496546	14851.6
lost to NTSC IX	0	0.0
lost to additional IX by ATV	1225	123.8
lost to ATV IX only	1225	123.8
lost to all IX	1225	123.8

Potential Interfering Stations Included in above Scenario 1

45A NC ASHEVILLE	BDTV	0943	LIC
46A NC WILMINGTON	BDTV	0986	LIC

After Analysis

Results for: 45A SC FLORENCE BDTV 1401 LIC
HAAT 242.0 m, ATV ERP 45.0 kW

	POPULATION	AREA (sq km)
within Noise Limited Contour	496562	14871.5
not affected by terrain losses	496546	14851.6
lost to NTSC IX	0	0.0
lost to additional IX by ATV	492002	14532.1
lost to ATV IX only	492002	14532.1
lost to all IX	492002	14532.1

Potential Interfering Stations Included in above Scenario 1

45A NC ASHEVILLE	BDTV	0943	LIC
46A NC WILMINGTON	BDTV	0986	LIC
45A SC FLORENCE_2	USERRECORD01		APP

The following station failed the de minimis interference criteria.

45D SC FLORENCE_2 USERRECORD01
ERP 108.90 kW HAAT 243.0 m RCAMSL 274.0 m
Antenna usr USRPAT01

Due to interference to the following station and scenario: 1

45D SC FLORENCE BDTV 1401
 ERP 45.00 kW HAAT 242.0 m RCAMSL 273.0 m
 Antenna CDB 999999999999999

Percent Service lost without proposal: 0.0 to BDTV 1401
 Percent Service lost with proposal: 99.1 to BDTV 1401

Result key: 6
 Scenario 2 Affected station 6
 Before Analysis

Results for: 45A SC FLORENCE BDTV 1401 LIC
 HAAT 242.0 m, ATV ERP 45.0 kW
 POPULATION AREA (sq km)
 within Noise Limited Contour 496562 14871.5
 not affected by terrain losses 496546 14851.6
 lost to NTSC IX 0 0.0
 lost to additional IX by ATV 1225 123.8
 lost to ATV IX only 1225 123.8
 lost to all IX 1225 123.8

Potential Interfering Stations Included in above Scenario 2

45A NC ASHEVILLE BDTV 0943 LIC
 46A NC WILMINGTON BDTV 0986 LIC

After Analysis

Results for: 45A SC FLORENCE BDTV 1401 LIC
 HAAT 242.0 m, ATV ERP 45.0 kW
 POPULATION AREA (sq km)
 within Noise Limited Contour 496562 14871.5
 not affected by terrain losses 496546 14851.6
 lost to NTSC IX 0 0.0
 lost to additional IX by ATV 492002 14532.1
 lost to ATV IX only 492002 14532.1
 lost to all IX 492002 14532.1

Potential Interfering Stations Included in above Scenario 2

45A NC ASHEVILLE BDTV 0943 LIC
 46A NC WILMINGTON BDTV 0986 LIC
 45A SC FLORENCE_2 USERRECORD01 APP

The following station failed the de minimis interference criteria.

45D SC FLORENCE_2 USERRECORD01
 ERP 108.90 kW HAAT 243.0 m RCAMSL 274.0 m
 Antenna usr USRPAT01

Due to interference to the following station and scenario: 2

45D SC FLORENCE BDTV 1401
 ERP 45.00 kW HAAT 242.0 m RCAMSL 273.0 m
 Antenna CDB 999999999999999

Percent Service lost without proposal: 0.0 to BDTV 1401
 Percent Service lost with proposal: 99.1 to BDTV 1401

#####

Analysis of Interference to Affected Station 7

Analysis of current record

Channel	Call	City/State	Application	Ref. No.
46	WWAY	WILMINGTON NC	BDTV	-0986

Stations Potentially Affecting This Station

Chan	Call	City/State	Dist(km)	Status	Application	Ref. No.
45	WJPM-TV	FLORENCE SC	143.9	LIC	BDTV	-1401
46	WHTJ	CHARLOTTESVILLE VA	429.0	LIC	BDTV	-1649
46	WPXV	NORFOLK VA	334.4	LIC	BDTV	-1664
47	WCSC-TV	CHARLESTON SC	193.9	LIC	BDTV	-1389
45	WJPM-D45	FLORENCE_2 SC	143.9	APP	USERRECORD-01	

Total scenarios = 2

Result key: 7
Scenario 1 Affected station 7
Before Analysis

Results for: 46A NC WILMINGTON BDTV 0986 LIC
HAAT 594.0 m, ATV ERP 1000.0 kW

	POPULATION	AREA (sq km)
within Noise Limited Contour	1064124	44371.4
not affected by terrain losses	1060836	44367.4
lost to NTSC IX	0	0.0
lost to additional IX by ATV	33	4.0
lost to ATV IX only	33	4.0
lost to all IX	33	4.0

Potential Interfering Stations Included in above Scenario 1

47A SC CHARLESTON BDTV 1389 LIC

After Analysis

Results for: 46A NC WILMINGTON BDTV 0986 LIC
HAAT 594.0 m, ATV ERP 1000.0 kW

	POPULATION	AREA (sq km)
within Noise Limited Contour	1064124	44371.4
not affected by terrain losses	1060836	44367.4
lost to NTSC IX	0	0.0
lost to additional IX by ATV	65	12.0
lost to ATV IX only	65	12.0
lost to all IX	65	12.0

Potential Interfering Stations Included in above Scenario 1

47A SC CHARLESTON BDTV 1389 LIC

45A SC FLORENCE_2 USERRECORD01 APP
 *Percent Service lost without proposal: 0.0 to BDTV 0986
 *Percent Service lost with proposal: 0.0 to BDTV 0986

Result key: 8
 Scenario 2 Affected station 7
 Before Analysis

Results for: 46A NC WILMINGTON BDTV 0986 LIC
 HAAT 594.0 m, ATV ERP 1000.0 kW
 POPULATION AREA (sq km)
 within Noise Limited Contour 1064124 44371.4
 not affected by terrain losses 1060836 44367.4
 lost to NTSC IX 0 0.0
 lost to additional IX by ATV 33 4.0
 lost to ATV IX only 33 4.0
 lost to all IX 33 4.0

Potential Interfering Stations Included in above Scenario 2

47A SC CHARLESTON BDTV 1389 LIC

After Analysis

Results for: 46A NC WILMINGTON BDTV 0986 LIC
 HAAT 594.0 m, ATV ERP 1000.0 kW
 POPULATION AREA (sq km)
 within Noise Limited Contour 1064124 44371.4
 not affected by terrain losses 1060836 44367.4
 lost to NTSC IX 0 0.0
 lost to additional IX by ATV 65 12.0
 lost to ATV IX only 65 12.0
 lost to all IX 65 12.0

Potential Interfering Stations Included in above Scenario 2

47A SC CHARLESTON BDTV 1389 LIC
 45A SC FLORENCE_2 USERRECORD01 APP
 *Percent Service lost without proposal: 0.0 to BDTV 0986
 *Percent Service lost with proposal: 0.0 to BDTV 0986

#####

Analysis of Interference to Affected Station 8

Analysis of current record

Channel	Call	City/State	Application Ref. No.
45	WJPM-D45	FLORENCE_2 SC	USERRECORD-01

Stations Potentially Affecting This Station

Chan	Call	City/State	Dist(km)	Status	Application Ref. No.
44	WUNG-TV	CONCORD NC	143.6	LIC	BDTV -0952

44	WECT	WILMINGTON NC	139.1	LIC	BDTV	-0985
44	WJWJ-TV	BEAUFORT SC	194.8	LIC	BDTV	-1384
45	WGNM	MACON GA	391.6	LIC	BDTV	-0417
45	WYCW	ASHEVILLE NC	276.9	LIC	BDTV	-0943
45	WJPM-TV	FLORENCE SC	0.0	LIC	BDTV	-1401
46	WWAY	WILMINGTON NC	143.9	LIC	BDTV	-0986

Total scenarios = 1

Result key: 9
Scenario 1 Affected station 8
Before Analysis

Results for: 45A SC FLORENCE_2 USERRECORD01 APP
HAAT 243.0 m, ATV ERP 108.9 kW

	POPULATION	AREA (sq km)
within Noise Limited Contour	593061	16984.1
not affected by terrain losses	593050	16976.1
lost to NTSC IX	0	0.0
lost to additional IX by ATV	582257	16540.8
lost to ATV IX only	582257	16540.8
lost to all IX	582257	16540.8

Potential Interfering Stations Included in above Scenario 1

45A NC ASHEVILLE	BDTV	0943	LIC
45A SC FLORENCE	BDTV	1401	LIC
46A NC WILMINGTON	BDTV	0986	LIC

#####

FINISHED FINISHED FINISHED FINISHED FINISHED FINISHED