

Engineering Statement in support of  
FCC FORM 349  
APPLICATION FOR AUTHORITY TO  
CONSTRUCT OR MAKE CHANGES  
IN AN FM TRANSLATOR  
OR FM BOSTER STATION  
(For Minor Change in licensed facility)  
K259AS, Facility ID 144058

**Introduction:**

This is an application by Rocket Radio Corporation (the Applicant) for a minor change in K259AS, Facility ID 144058.

The applicant proposes the following changes:

- Relocate the facility to a site 13.9 km distant on a bearing of 201°
- Change the antenna to a Scala CA2-V (FCC Number 16130)
- Orient the antenna to 200°
- Change frequency to Channel 258
- Change the community to Tortilla Flat, Arizona.

The proposed changes are minor since the change in frequency is to a first adjacent channel and there is overlap of the authorized and proposed 60dBu contours, see Exhibit 1. The proposed facility will continue to operate as a fill-in for KQMR 262C, Globe, AZ, See Exhibit 10.

The applicant has written permission of the owners of KQMR to rebroadcast their signal.

The proposed facility is within the protected contour of 2<sup>nd</sup> adjacent authorization, KESZ (260C). The area of interference is in a remote, mountainous, area. There is no population, occupied structures or paved roads in the area of interference, see Exhibit 12d.

This application was prepared using FCC 30-arc-second terrain data.

Joseph M. DiPietro, P.E.  
RFEngineers, Inc.  
October 2010

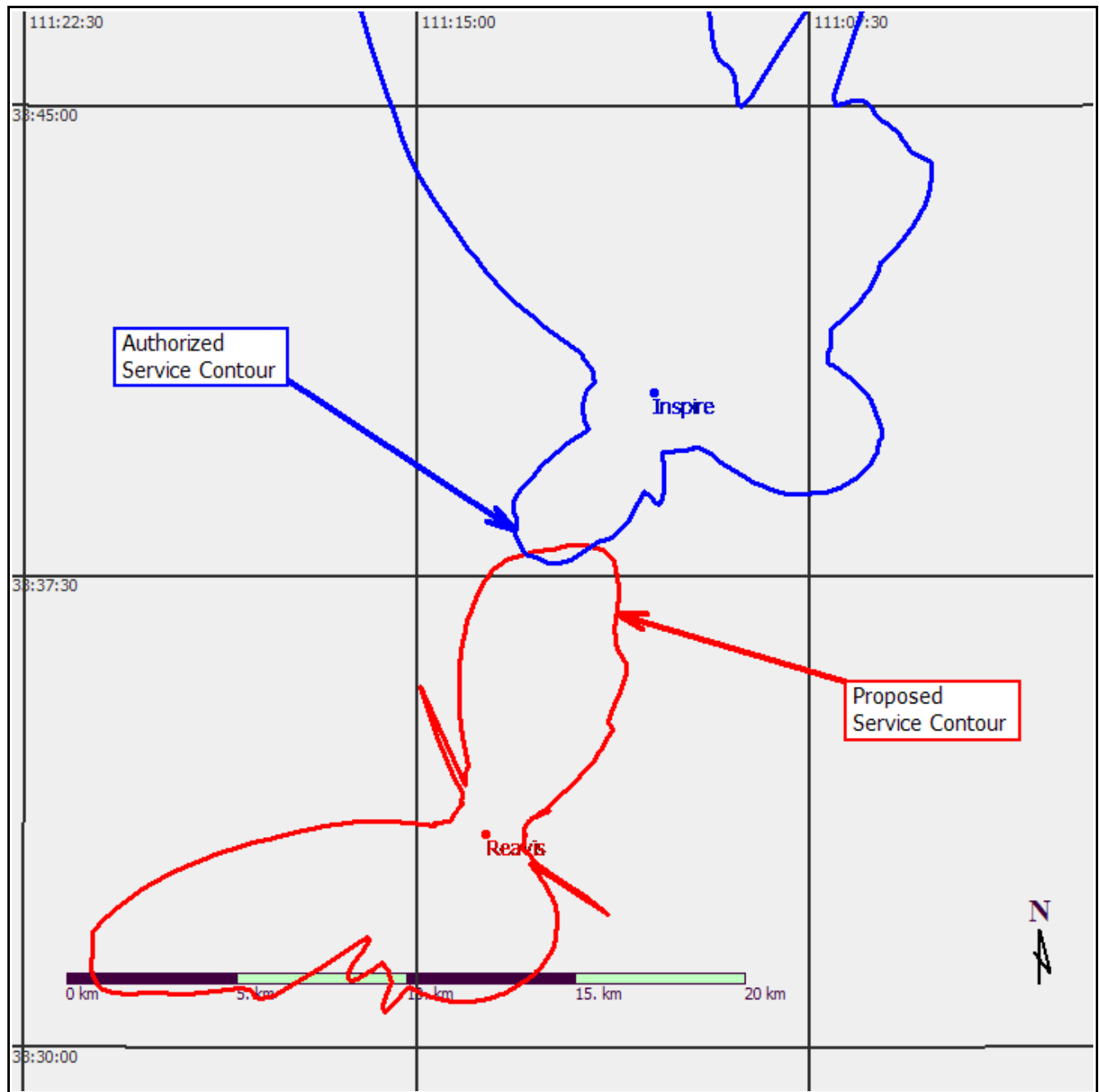
### Section III-A Engineering Data:

#### Tech Box Data:

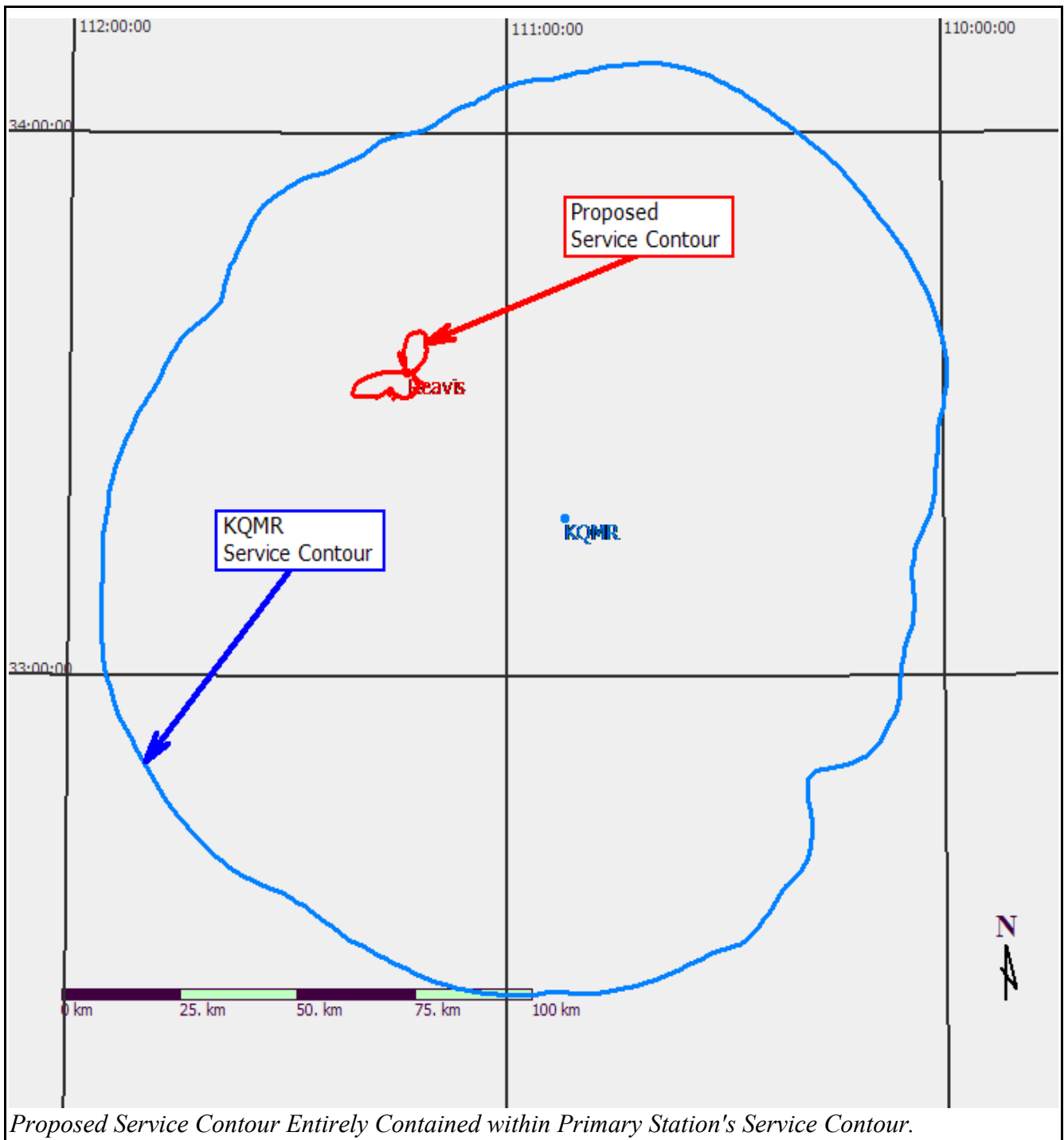
1. Channel: 258
2. Primary Station: Facility ID 22977, Callsign KQMR, Globe, Arizona Channel 262C
3. Delivery Method: Off Air
4. Antenna Location Coordinates: 33° 33' 23" N (NAD-27)  
111° 13' 39" W
5. Antenna Structure Registration Number: N/A
6. Antenna Location Site Elevation: 1089 meters AMSL
7. Overall Tower Height: 16 meters AGL
8. Height of Radiation Center: meters (H) 15 (V) AGL
9. Effective Radiated Power: kW (H) 0.065 kW (V)
10. Transmitting Antenna: Directional "Off-The-Shelf" SCA CA2-V, #16130 @200°
11. Booster or Fill-in within protected contour: Yes, See Exhibit 10
12. Interference: No. Overlap with KESZ, See Exhibits 12c and 12d.
  - a) Contour Overlap Requirements: Checked. See Exhibits 12a-d.
  - b) TV Channel 6 Protection: Not Checked.
13. Unattended Operation: Yes
14. Multiple Translators: Yes
15. NEPA, Yes.
  - a) Operation of this facility will not have a significant environmental impact. The proposed site is located on a remote, mountain-top. To the best knowledge of the Applicant:
    1. The structure is not located in an officially designated wilderness area or wildlife preserve, nor does it threaten the existence or habitat of endangered species.
    2. The proposed changes will not affect districts, sites, buildings, structures or objects significant in American history, architecture, engineering or culture that are listed in the National Register of Historic Places, or eligible for listing.
    3. The site is not located in a flood plain. Nothing is proposed that would require significant changes in surface features such as wetland fill, deforestation or water diversion.
    4. The existing structure does not require markings or lights in accordance with FAA requirements.
  - b) The Applicant will cooperate with all site users, managers and owners with regard to the cessation of operation or the reduction of operating power, whenever it is necessary to comply with the FCC Regulations and Guidelines on Human Exposure to Non-Ionizing RF Radiation.
  - c) The modeled contribution to the RF environment, 2-meters above the ground, by the proposed facility is less than  $12.3\mu\text{W}/\text{cm}^2$ , or 6.2%, of the maximum permitted value for general public exposure. This result was obtained using the FCC's FM Model program. The antenna was set to a single bay dipole. Based on this information the proposed facility is in compliance with 47 C.R.R. Section 1.1306 with regards to radio-frequency electromagnetic exposure.

# Exhibit 1

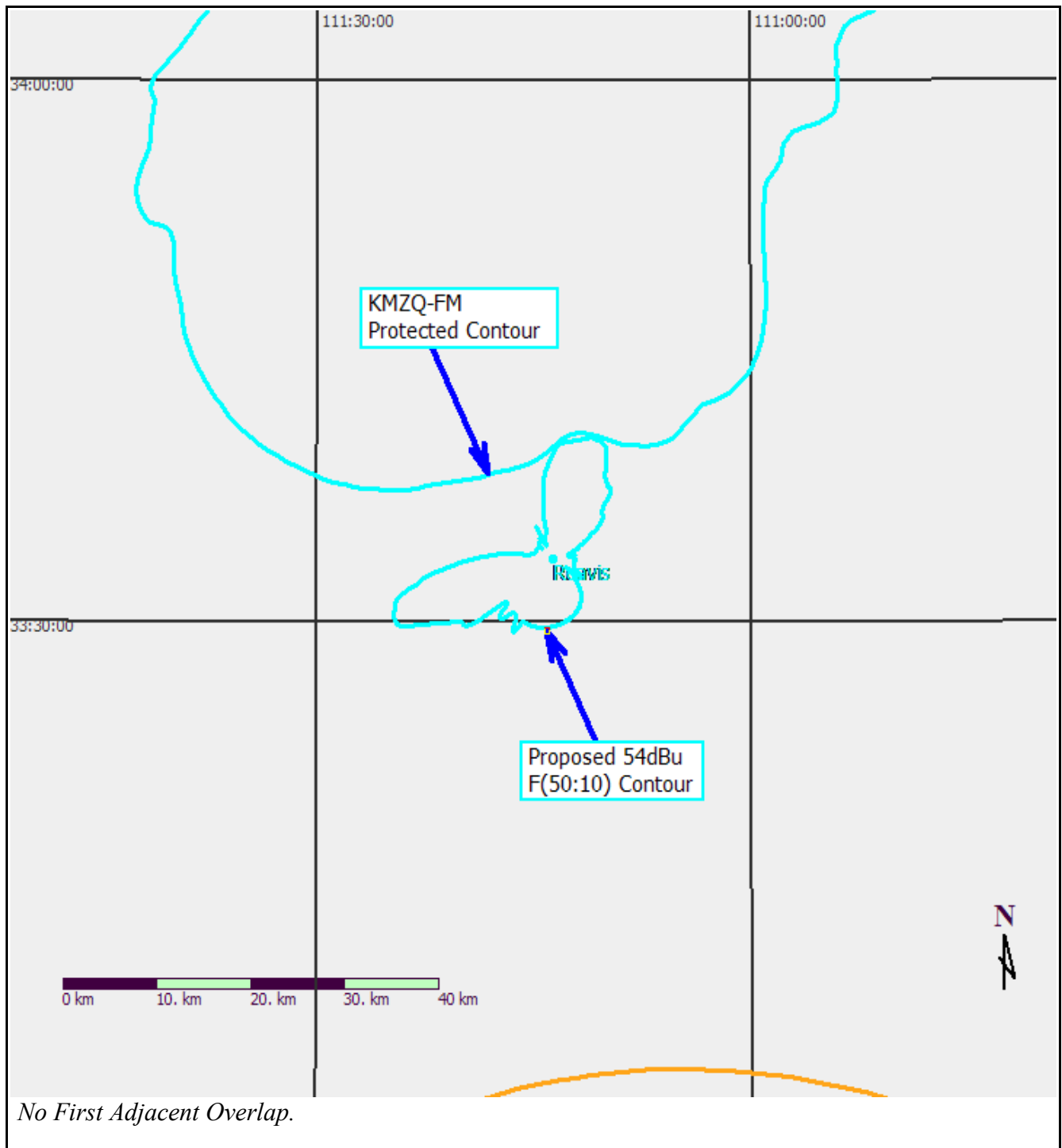
## Overlap of Authorized and Proposed Service Contours.



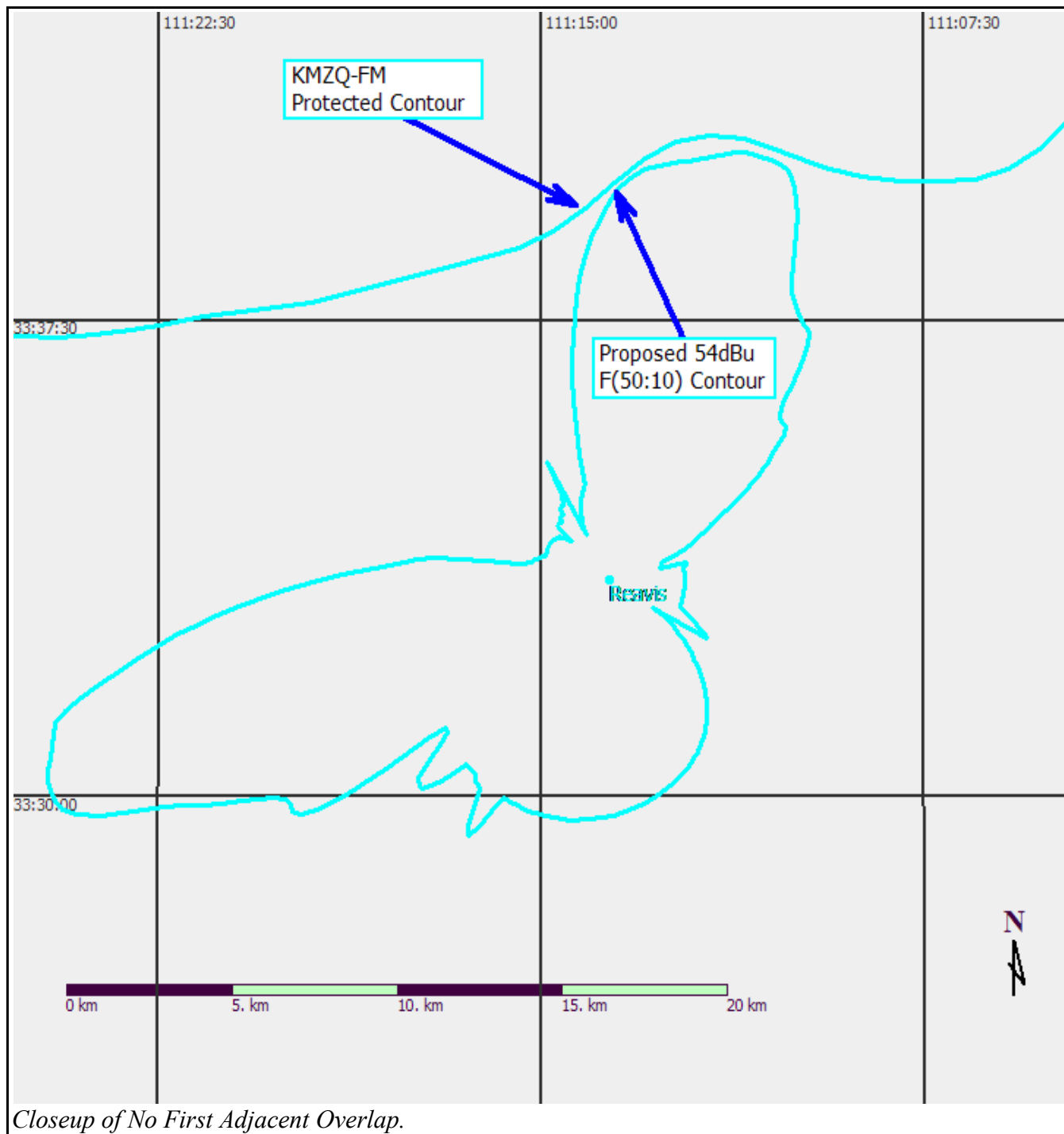
## Exhibit 10



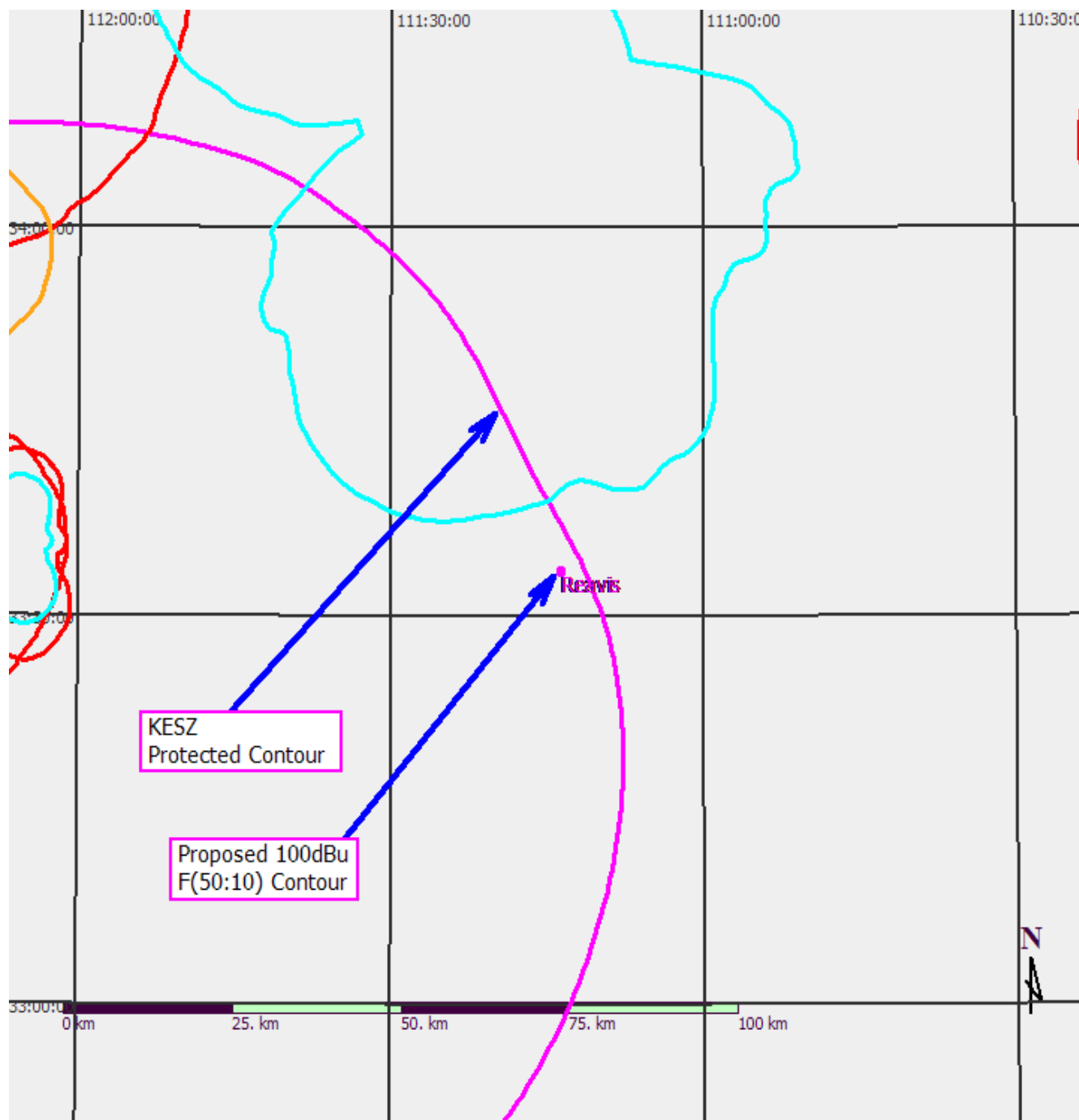
## Exhibit 12a



## Exhibit 12b

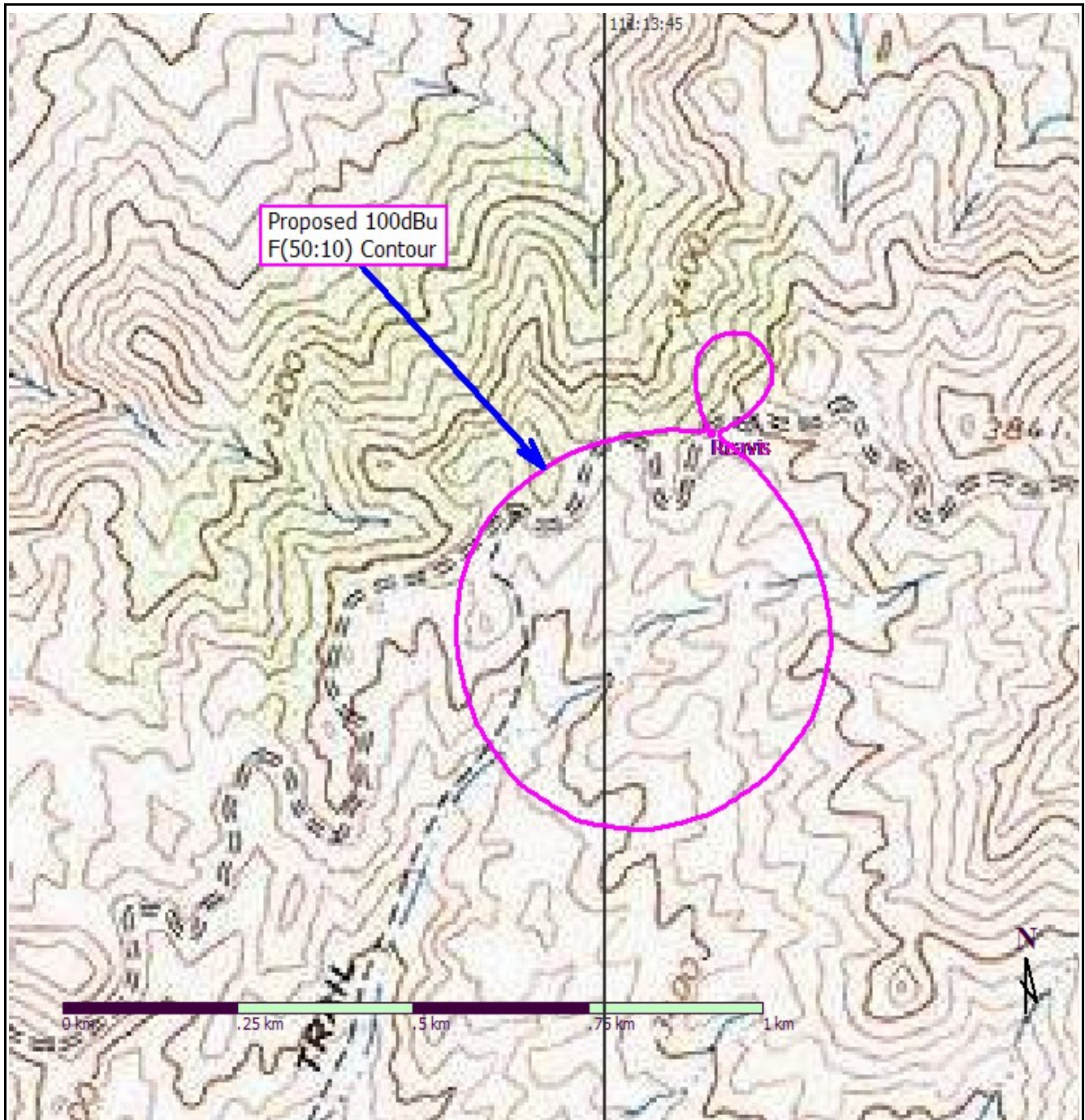


## Exhibit 12c



*Overlap of the Proposed 100 dBu Interfering Contour with KESZ Protected Contour.*

## Exhibit 12d



*No Population, Occupied Structures or Roads within the 100 dBu Interfering Contour overlap.*