

TECHNICAL EXHIBIT
DTV MAXIMIZATION APPLICATION
STATION WXMI(DT)
GRAND RAPIDS, MICHIGAN
CH 19 750 KW (MAX-DA) 334 M

Technical Narrative

This Technical Exhibit supports an application for digital television (DTV) station WXMI(DT) for its "maximized" DTV operation at Grand Rapids, Michigan. This application requests a construction permit (CP) for WXMI(DT) digital television operation on channel 19 at Grand Rapids with a directional effective radiated power of 750 kilowatts. WXMI(DT) intends to use a directional transmitting antenna (Dielectric TFU-36TH-R 6C150) for digital operation.

Proposed Facilities

Station WXMI(DT) proposes to operate DTV channel 19 from its licensed DTV site. The antenna height above average terrain for the channel 19 DTV operation will be 334 meters. The proposed WXMI(DT) effective radiated power exceeds the Commission's *Appendix B* allocated maximum effective radiated power in some azimuthal directions for WXMI(DT).¹ Therefore, an allocation study was completed to ensure no prohibited interference would occur.

¹ See Seventh Report And Order And Eighth Further Notice Of Proposed Rule Making in the Matter of Advanced Television Systems and their Impact Upon the Existing Television Broadcast Service, MB Docket 87-268, Released August 6, 2007; Adopted August 1, 2007.

The proposed DTV transmitter site will be located at the WXMI(DT) tower. Therefore, the proposed site location is:

42° 41' 15" North Latitude
85° 31' 57" West Longitude

A sketch of antenna and pertinent elevations are included as Figure 1.

The Appendix contains the horizontal plane radiation pattern for the proposed antenna system.

Figure 2 is a map showing the proposed DTV predicted coverage contour and the associated DTV appendix B Noise-Limited coverage contour. The extent of the contours have been calculated using the normal FCC prediction method. The Grand Rapids city limits were derived from information contained in the 2000 U.S. Census of Population and Housing.

Population Served

The herein proposed WXMI(DT) "maximized" facility is predicted to serve 2,281,457 persons, post-transition based upon the 2000 Census. WXMI(DT)'s associated Appendix B facility is predicted to serve 1,789,000 persons. Therefore, the herein proposed WXMI(DT) facility would serve more than 100% of WXMI(DT)'s Appendix B population.

Allocation Considerations

The proposed WXMI(DT) Channel 19 facility meets the requirements of Section 73.623 of the FCC Rules concerning

predicted interference to other Appendix B DTV allotments. Longley-Rice interference analyses were conducted pursuant to the requirements of the FCC Rules; OET Bulletin No. 69; and published FCC guidelines for preparation of such interference analyses. The Longley-Rice interference analyses were conducted using the software developed by du Treil, Lundin & Rackley, Inc. based on the FCC published software routines.² Stations selected for analysis were determined pursuant to the distance requirements outlined in the FCC DTV Processing Guidelines Public Notice. The results of the interference analyses for the proposed WXMI(DT) facility are summarized herein at Figure 3. As indicated therein, the proposed facility will meet the 0.5% criterion outlined in the FCC Rules and published guidelines with respect to all considered stations.³

Radiofrequency Electromagnetic Field Exposure

The proposed WXMI(DT) facilities were evaluated in terms of potential radiofrequency electromagnetic field exposure at ground level to workers and the general public. The radiation center for the proposed WXMI(DT) antenna is located 318 meters above ground level. The maximum effective radiated power is 750 kilowatts. A "worst case" downward relative field value of 0.25 is assumed for the antenna's downward radiation. The calculated power density at a point 2 meters above ground level is 0.0157 mW/cm².

² The duTreil, Lundin & Rackley, Inc. DTV interference analysis program is based on the program and procedures outlined by the FCC in the Sixth Report and Order; subsequent Memorandum Opinion and Order; and FCC OET Bulletin No. 69. A nominal grid size resolution of 2 km was employed.

³ Interference analysis results reflect the net change in interference to a given station considering the interference predicted to occur from all other stations (i.e. "masking") including the allotment facility for WXMI(DT). This properly reflects the net interference change for determining compliance with the FCC 0.5% *de minimis* standard.

This is less than 5 percent of the Commission's recommended limit of 0.34 mW/cm^2 for channel 19 for an "uncontrolled" environment.

Access to the transmitting site is restricted and appropriately marked with warning signs. In the event that workers or other authorized personnel enter restricted areas or climb the tower, appropriate measures will be taken to assure worker safety with respect to radio frequency radiation exposure. Such measures include reducing the average exposure by spreading out the work over a longer period of time, wearing "accepted" RFR protective clothing and/or RFR exposure monitors or scheduling work when the stations are at reduced power or shut down. The proposed WXMI(DT) operation appears to be otherwise categorically excluded from environmental processing.

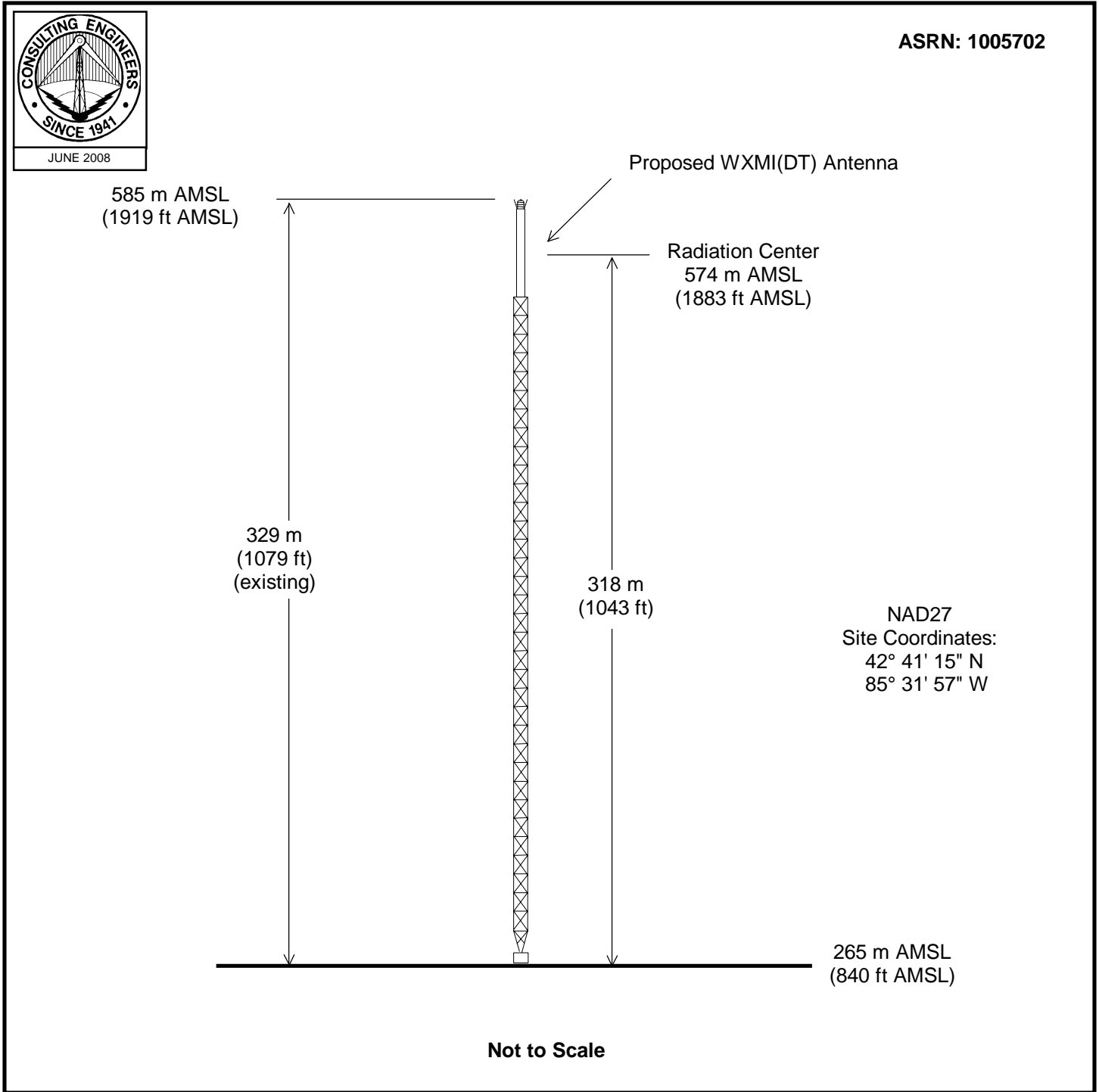
It is noted that this statement only addresses the potential for radiofrequency electromagnetic field exposure. All other aspects of the environmental processing analysis will be or already have been provided to the FCC by the tower owner.

Charles Cooper

du Treil, Lundin & Rackley, Inc.
201 Fletcher Avenue
Sarasota, Florida 32437
941.329.6000

June 17, 2008

Figure 1



ANTENNA AND SUPPORTING STRUCTURE

DTV STATION WXMI(DT)
GRAND RAPIDS, MICHIGAN
CH 19 750 KW (MAX-DA) 334 M

du Treil, Lundin & Rackley, Inc. Sarasota, Florida

Figure 2

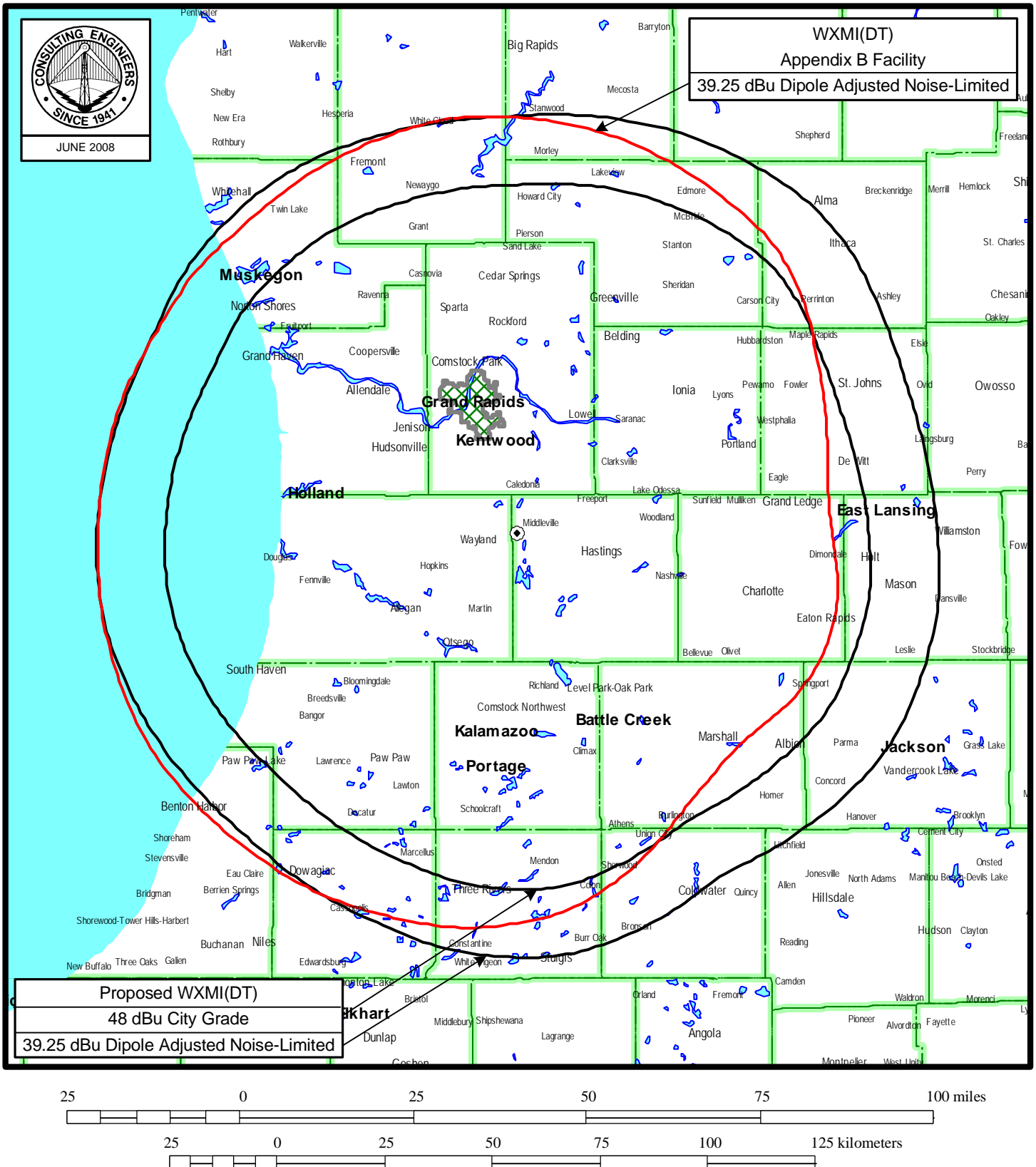


Figure 3

TW Census data selected 2000
Post Transition Data Base Selected /export/home/cdbs/pt_tvdb.sff

TV INTERFERENCE and SPACING ANALYSIS PROGRAM

Date: 06-12-2008 Time: 08:22:44

Record Selected for Analysis

WXMI USERRECORD-01 GRAND RAPIDS MI US
Channel 19 ERP 750. kW HAAT 332. m RCAMSL 00574 m
Latitude 042-41-15 Longitude 0085-31-57
Status APP Zone 2 Border
Dir Antenna Make CDB Model 00000000043814 Beam tilt N Ref Azimuth 130.
Last update Cutoff date Docket
Comments
Applicant

Cell Size for Service Analysis 2.0 km/side

Distance Increments for Longley-Rice Analysis 1.00 km

Facility meets maximum height/power limits

Azimuth (Deg)	ERP (kW)	HAAT (m)	41.0 dBu F(50,90) (km)
0.0	476.407	328.9	93.4
45.0	736.561	340.0	98.2
90.0	481.201	336.9	94.3
135.0	498.780	315.3	92.3
180.0	469.261	345.6	94.9
225.0	374.887	325.7	91.0
270.0	457.471	337.9	94.0
315.0	608.175	325.1	95.1

Evaluation toward Class A Stations

No Spacing violations or contour overlap to Class A stations

Class A Evaluation Complete

SPACING VIOLATION FOUND BETWEEN STATION

WXMI 19 GRAND RAPIDS MI USERRECORD01

Figure 3

and station

SHORT TO: WHTV 18 JACKSON MI BLCT 20001023ADV
042-25-13 0084-31-25
Req. separation => 12.0 <= 106.0 Actual separation 88.0 Short 18.0(76.0) km

SHORT TO: WGN-TV 19 CHICAGO IL BLCDT 20040316ACQ
041-52-44 0087-38-10
Req. separation 196.3 Actual separation 195.4 Short 0.9 km

SHORT TO: WGN-TV 19 CHICAGO IL DTVPLN DTVP0676
41 -52-44 87 -38-10
Req. separation 223.7 Actual separation 195.4 Short 28.3 km

SHORT TO: WISE-TV 19 FORT WAYNE IN BLCDT 20070509AEQ
041-05-38 0085-10-36
Req. separation 196.3 Actual separation 179.4 Short 16.9 km

SHORT TO: WISE-TV 19 FORT WAYNE IN DTVPLN DTVP0679
41 -05-38 85 -10-36
Req. separation 223.7 Actual separation 179.4 Short 44.3 km

SHORT TO: WXMI 19 GRAND RAPIDS MI DTVPLN DTVP0685
42 -41-15 85 -31-57
Req. separation 223.7 Actual separation 0.0 Short 223.7 km

SHORT TO: WXMI 19 GRAND RAPIDS MI BLCDT 20030117ABD
042-41-15 0085-31-57
Req. separation 196.3 Actual separation 0.0 Short 196.3 km

SHORT TO: WDCP-TV 19 UNIVERSITY CENTER MI BSTA 20070522ACO
043-33-42 0083-58-52
Req. separation 244.6 Actual separation 159.3 Short 85.3 km

SHORT TO: WDCP-TV 19 UNIVERSITY CENTER MI BMLET 20070522ACN
043-33-42 0083-58-52
Req. separation 244.6 Actual separation 159.3 Short 85.3 km

LANDMOBILE SPACING VIOLATIONS FOUND

NONE

Proposed facility is 35.8km from FCC Monitoring station at
Allegan MI
Bearing: 255.4 degrees ERP: 455.15 kW HAAT: 341.3 m

Figure 3

Field = 19.1 mV/m

Proposed facility OK toward West Virginia quiet zone

Proposed facility OK toward Table Mountain

Proposed facility is within the Canadian coordination distance
Distance to border = 203.5km

Proposed facility is beyond the Mexican coordination distance

Proposed station is OK toward AM broadcast stations

Start of Interference Analysis

Channel	Call	City/State	ARN
19	WXMI	GRAND RAPIDS MI	USERRECORD01

Stations Potentially Affected by Proposed Station

Chan	Call	City/State	Dist(km)	Status	Application Ref. No.
15	WXSP-CA	GRAND RAPIDS MI	40.3	LIC	BLTT -19910507JJ
18	WVTV	MILWAUKEE WI	198.4	CP	BPCDT -20080317AGE
18	WVTV	MILWAUKEE WI	198.4	PLN	DTVPLN -DTVP0662
19	WGN-TV	CHICAGO IL	194.9	LIC	BLCDT -20040316ACQ
19	WGN-TV	CHICAGO IL	194.9	PLN	DTVPLN -DTVP0676
19	WHOI	PEORIA IL	405.5	PLN	DTVPLN -DTVP0678
19	WHOI	PEORIA IL	405.5	CP	BPCDT -20080317AHQ
19	WISE-TV	FORT WAYNE IN	179.5	LIC	BLCDT -20070509AEQ
19	WISE-TV	FORT WAYNE IN	179.6	PLN	DTVPLN -DTVP0679
19	WCLL-CA	COLUMBUS OH	369.2	LIC	BLTTL -19990802JG
19	WMTV	MADISON WI	324.6	LIC	BLCDT -20040823ABP
19	WMTV	MADISON WI	324.6	PLN	DTVPLN -DTVP0708
20	WOTV	BATTLE CREEK MI	14.0	LIC	BLCDT -20030721AHS
20	WOTV	BATTLE CREEK MI	14.0	PLN	DTVPLN -DTVP0728
27	WOLP-CA	GRAND RAPIDS MI	31.9	LIC	BLTTL -19980626JE

%%%

Analysis of Interference to Affected Station 1

Channel	Call	City/State	Application Ref. No.
15	WXSP-CA	GRAND RAPIDS MI	BLTT -19910507JJ

Stations Potentially Affecting This Station

Chan	Call	City/State	Dist(km)	Status	Application Ref. No.
14	WCMU-TV	MOUNT PLEASANT MI	99.8	LIC	BMLET -19940726KE
15	WICD	CHAMPAIGN IL	374.1	LIC	BLCT -19821101KG
15	WANE-TV	FORT WAYNE IN	218.7	LIC	BLCT -20020326AAR
15	WDCQ-TV	BAD AXE MI	178.2	LIC	BLEDT -20030922ABG

Figure 3

15	WDCQ-TV	BAD AXE MI	178.2	PLN	DTVPLN	-DTVP0532
15	WEWS-TV	CLEVELAND OH	378.2	LIC	BLCDT	-20020304ACC
15	WEWS-TV	CLEVELAND OH	378.1	PLN	DTVPLN	-DTVP0542
15	WEWS-TV	CLEVELAND OH	378.2	CP	BPCDT	-20080226ACA
15	WMTV	MADISON WI	304.4	LIC	BLCT	-20040809ABJ
19	WXMI	GRAND RAPIDS MI	40.3	PLN	DTVPLN	-DTVP0685
19	WXMI	GRAND RAPIDS MI	40.3	LIC	BLCDT	-20030117ABD
19	WXMI	GRAND RAPIDS MI	40.3	APP	USERRECORD-01	

Proposal causes no interference

#####

Analysis of Interference to Affected Station 2

Channel	Call	City/State	Application Ref. No.
18	WVTV	MILWAUKEE WI	BPCDT -20080317AGE

Stations Potentially Affecting This Station

Chan	Call	City/State	Dist(km)	Status	Application Ref. No.
17	WYIN	GARY IN	198.5	LIC	BLEDT -20040206AAA
17	WYIN	GARY IN	198.5	PLN	DTVPLN -DTVP0597
18	KYIN	MASON CITY IA	390.9	LIC	BLEDT -20070924AFU
18	KYIN	MASON CITY IA	400.2	PLN	DTVPLN -DTVP0637
18	WAND	DECATUR IL	357.8	LIC	BLCDT -20020509AAX
18	WAND	DECATUR IL	357.8	PLN	DTVPLN -DTVP0639
19	WGN-TV	CHICAGO IL	137.0	LIC	BLCDT -20040316ACQ
19	WGN-TV	CHICAGO IL	137.0	PLN	DTVPLN -DTVP0676
19	WXMI	GRAND RAPIDS MI	198.4	PLN	DTVPLN -DTVP0685
19	WMTV	MADISON WI	128.6	LIC	BLCDT -20040823ABP
19	WMTV	MADISON WI	128.6	PLN	DTVPLN -DTVP0708
19	WXMI	GRAND RAPIDS MI	198.4	APP	USERRECORD-01

Proposed station is beyond the site to
nearest cell evaluation distance

#####

Analysis of Interference to Affected Station 3

Channel	Call	City/State	Application Ref. No.
18	WVTV	MILWAUKEE WI	DTVPLN -DTVP0662

Stations Potentially Affecting This Station

Chan	Call	City/State	Dist(km)	Status	Application Ref. No.
17	WYIN	GARY IN	198.5	LIC	BLEDT -20040206AAA
17	WYIN	GARY IN	198.5	PLN	DTVPLN -DTVP0597
18	KYIN	MASON CITY IA	390.9	LIC	BLEDT -20070924AFU
18	KYIN	MASON CITY IA	400.2	PLN	DTVPLN -DTVP0637
18	WAND	DECATUR IL	357.8	LIC	BLCDT -20020509AAX

Figure 3

18	WAND	DECATUR IL	357.8	PLN	DTVPLN	-DTVP0639
19	WGN-TV	CHICAGO IL	137.0	LIC	BLCDDT	-20040316ACQ
19	WGN-TV	CHICAGO IL	137.0	PLN	DTVPLN	-DTVP0676
19	WXMI	GRAND RAPIDS MI	198.4	PLN	DTVPLN	-DTVP0685
19	WMTV	MADISON WI	128.6	LIC	BLCDDT	-20040823ABP
19	WMTV	MADISON WI	128.6	PLN	DTVPLN	-DTVP0708
19	WXMI	GRAND RAPIDS MI	198.4	APP	USERRECORD-01	

Proposed station is beyond the site to nearest cell evaluation distance

#####

Analysis of Interference to Affected Station 4

Analysis of current record

Channel	Call	City/State	Application Ref. No.
19	WGN-TV	CHICAGO IL	BLCDDT -20040316ACQ

Stations Potentially Affecting This Station

Chan	Call	City/State	Dist(km)	Status	Application Ref. No.
18	WVTV	MILWAUKEE WI	137.0	CP	BPCDDT -20080317AGE
18	WVTV	MILWAUKEE WI	137.0	PLN	DTVPLN -DTVP0662
19	WUSI-TV	OLNEY IL	340.5	LIC	BLEDTT -20060619ABG
19	WUSI-TV	OLNEY IL	340.5	PLN	DTVPLN -DTVP0677
19	WHOI	PEORIA IL	212.4	PLN	DTVPLN -DTVP0678
19	WHOI	PEORIA IL	212.4	CP	BPCDDT -20080317AHQ
19	WISE-TV	FORT WAYNE IN	222.6	LIC	BLCDDT -20070509AEQ
19	WISE-TV	FORT WAYNE IN	222.6	PLN	DTVPLN -DTVP0679
19	WXMI	GRAND RAPIDS MI	194.9	PLN	DTVPLN -DTVP0685
19	WMTV	MADISON WI	200.0	LIC	BLCDDT -20040823ABP
19	WMTV	MADISON WI	200.0	PLN	DTVPLN -DTVP0708
20	WOTV	BATTLE CREEK MI	194.3	LIC	BLCDDT -20030721AHS
20	WOTV	BATTLE CREEK MI	194.3	PLN	DTVPLN -DTVP0728
20	WHA-TV	MADISON WI	203.3	LIC	BLEDTT -20020503AAF
20	WHA-TV	MADISON WI	203.3	PLN	DTVPLN -DTVP0748
19	WXMI	GRAND RAPIDS MI	194.9	APP	USERRECORD-01

Total scenarios = 16

Result key: 1
Scenario 1 Affected station 4
Before Analysis

Results for: 19A IL CHICAGO		BLCDDT	20040316ACQ	LIC
HAAT 453.0 m, ATV ERP 645.0 kW				
	POPULATION	AREA (sq km)		
within Noise Limited Contour	9560634	33065.1		
not affected by terrain losses	9556156	33025.0		
lost to NTSC IX	0	0.0		
lost to additional IX by ATV	46722	1380.7		
lost to ATV IX only	46722	1380.7		
lost to all IX	46722	1380.7		

Figure 3

Potential Interfering Stations Included in above Scenario 1

18A WI MILWAUKEE	BPCDDT	20080317AGE	CP
19A IL PEORIA	DTVPLN	DTVP0678	PLN
19A IN FORT WAYNE	BLCDDT	20070509AEQ	LIC
19A WI MADISON	BLCDDT	20040823ABP	LIC
19A MI GRAND RAPIDS	DTVPLN	DTVP0685	PLN

After Analysis

Results for: 19A IL CHICAGO BLCDDT 20040316ACQ LIC

HAAT 453.0 m, ATV ERP 645.0 kW

	POPULATION	AREA (sq km)
within Noise Limited Contour	9560634	33065.1
not affected by terrain losses	9556156	33025.0
lost to NTSC IX	0	0.0
lost to additional IX by ATV	44597	1300.4
lost to ATV IX only	44597	1300.4
lost to all IX	44597	1300.4

Potential Interfering Stations Included in above Scenario 1

18A WI MILWAUKEE	BPCDDT	20080317AGE	CP
19A IL PEORIA	DTVPLN	DTVP0678	PLN
19A IN FORT WAYNE	BLCDDT	20070509AEQ	LIC
19A WI MADISON	BLCDDT	20040823ABP	LIC
19A MI GRAND RAPIDS	USERRECORD01		APP

Percent new IX = -0.0223%

Result key: 2
Scenario 2 Affected station 4
Before Analysis

Results for: 19A IL CHICAGO BLCDDT 20040316ACQ LIC

HAAT 453.0 m, ATV ERP 645.0 kW

	POPULATION	AREA (sq km)
within Noise Limited Contour	9560634	33065.1
not affected by terrain losses	9556156	33025.0
lost to NTSC IX	0	0.0
lost to additional IX by ATV	46722	1380.7
lost to ATV IX only	46722	1380.7
lost to all IX	46722	1380.7

Potential Interfering Stations Included in above Scenario 2

18A WI MILWAUKEE	BPCDDT	20080317AGE	CP
19A IL PEORIA	DTVPLN	DTVP0678	PLN
19A IN FORT WAYNE	BLCDDT	20070509AEQ	LIC
19A WI MADISON	DTVPLN	DTVP0708	PLN
19A MI GRAND RAPIDS	DTVPLN	DTVP0685	PLN

After Analysis

Results for: 19A IL CHICAGO BLCDDT 20040316ACQ LIC

HAAT 453.0 m, ATV ERP 645.0 kW

Figure 3

	POPULATION	AREA (sq km)
within Noise Limited Contour	9560634	33065.1
not affected by terrain losses	9556156	33025.0
lost to NTSC IX	0	0.0
lost to additional IX by ATV	44597	1300.4
lost to ATV IX only	44597	1300.4
lost to all IX	44597	1300.4

Potential Interfering Stations Included in above Scenario 2

18A WI MILWAUKEE	BPCDT	20080317AGE	CP
19A IL PEORIA	DTVPLN	DTVP0678	PLN
19A IN FORT WAYNE	BLCDDT	20070509AEQ	LIC
19A WI MADISON	DTVPLN	DTVP0708	PLN
19A MI GRAND RAPIDS	USERRECORD01		APP

Percent new IX = -0.0223%

Result key: 3
Scenario 3 Affected station 4
Before Analysis

Results for: 19A IL CHICAGO BLCDDT 20040316ACQ LIC
HAAT 453.0 m, ATV ERP 645.0 kW

	POPULATION	AREA (sq km)
within Noise Limited Contour	9560634	33065.1
not affected by terrain losses	9556156	33025.0
lost to NTSC IX	0	0.0
lost to additional IX by ATV	46722	1380.7
lost to ATV IX only	46722	1380.7
lost to all IX	46722	1380.7

Potential Interfering Stations Included in above Scenario 3

18A WI MILWAUKEE	BPCDT	20080317AGE	CP
19A IL PEORIA	DTVPLN	DTVP0678	PLN
19A IN FORT WAYNE	DTVPLN	DTVP0679	PLN
19A WI MADISON	BLCDDT	20040823ABP	LIC
19A MI GRAND RAPIDS	DTVPLN	DTVP0685	PLN

After Analysis

Results for: 19A IL CHICAGO BLCDDT 20040316ACQ LIC
HAAT 453.0 m, ATV ERP 645.0 kW

	POPULATION	AREA (sq km)
within Noise Limited Contour	9560634	33065.1
not affected by terrain losses	9556156	33025.0
lost to NTSC IX	0	0.0
lost to additional IX by ATV	44597	1300.4
lost to ATV IX only	44597	1300.4
lost to all IX	44597	1300.4

Potential Interfering Stations Included in above Scenario 3

18A WI MILWAUKEE	BPCDT	20080317AGE	CP
19A IL PEORIA	DTVPLN	DTVP0678	PLN
19A IN FORT WAYNE	DTVPLN	DTVP0679	PLN

Figure 3

19A WI MADISON BLCDDT 20040823ABP LIC
19A MI GRAND RAPIDS USERRECORD01 APP

Percent new IX = -0.0223%

Result key: 4
Scenario 4 Affected station 4
Before Analysis

Results for: 19A IL CHICAGO BLCDDT 20040316ACQ LIC
HAAT 453.0 m, ATV ERP 645.0 kW

	POPULATION	AREA (sq km)
within Noise Limited Contour	9560634	33065.1
not affected by terrain losses	9556156	33025.0
lost to NTSC IX	0	0.0
lost to additional IX by ATV	46722	1380.7
lost to ATV IX only	46722	1380.7
lost to all IX	46722	1380.7

Potential Interfering Stations Included in above Scenario 4

18A WI MILWAUKEE	BPCDT	20080317AGE	CP
19A IL PEORIA	DTVPLN	DTVP0678	PLN
19A IN FORT WAYNE	DTVPLN	DTVP0679	PLN
19A WI MADISON	DTVPLN	DTVP0708	PLN
19A MI GRAND RAPIDS	DTVPLN	DTVP0685	PLN

After Analysis

Results for: 19A IL CHICAGO BLCDDT 20040316ACQ LIC
HAAT 453.0 m, ATV ERP 645.0 kW

	POPULATION	AREA (sq km)
within Noise Limited Contour	9560634	33065.1
not affected by terrain losses	9556156	33025.0
lost to NTSC IX	0	0.0
lost to additional IX by ATV	44597	1300.4
lost to ATV IX only	44597	1300.4
lost to all IX	44597	1300.4

Potential Interfering Stations Included in above Scenario 4

18A WI MILWAUKEE	BPCDT	20080317AGE	CP
19A IL PEORIA	DTVPLN	DTVP0678	PLN
19A IN FORT WAYNE	DTVPLN	DTVP0679	PLN
19A WI MADISON	DTVPLN	DTVP0708	PLN
19A MI GRAND RAPIDS	USERRECORD01		APP

Percent new IX = -0.0223%

Result key: 5
Scenario 5 Affected station 4
Before Analysis

Results for: 19A IL CHICAGO BLCDDT 20040316ACQ LIC
HAAT 453.0 m, ATV ERP 645.0 kW

	POPULATION	AREA (sq km)
within Noise Limited Contour	9560634	33065.1

Figure 3

not affected by terrain losses	9556156	33025.0	
lost to NTSC IX	0	0.0	
lost to additional IX by ATV	46126	1364.7	
lost to ATV IX only	46126	1364.7	
lost to all IX	46126	1364.7	
Potential Interfering Stations Included in above Scenario	5		
18A WI MILWAUKEE	BPCDT	20080317AGE	CP
19A IL PEORIA	BPCDT	20080317AHQ	CP
19A IN FORT WAYNE	BLCDT	20070509AEQ	LIC
19A WI MADISON	BLCDT	20040823ABP	LIC
19A MI GRAND RAPIDS	DTVPLN	DTVP0685	PLN
After Analysis			
Results for: 19A IL CHICAGO	BLCDT	20040316ACQ	LIC
HAAT 453.0 m, ATV ERP 645.0 kW			
	POPULATION	AREA (sq km)	
within Noise Limited Contour	9560634	33065.1	
not affected by terrain losses	9556156	33025.0	
lost to NTSC IX	0	0.0	
lost to additional IX by ATV	44001	1284.4	
lost to ATV IX only	44001	1284.4	
lost to all IX	44001	1284.4	
Potential Interfering Stations Included in above Scenario	5		
18A WI MILWAUKEE	BPCDT	20080317AGE	CP
19A IL PEORIA	BPCDT	20080317AHQ	CP
19A IN FORT WAYNE	BLCDT	20070509AEQ	LIC
19A WI MADISON	BLCDT	20040823ABP	LIC
19A MI GRAND RAPIDS	USERRECORD01		APP
Percent new IX =	-0.0223%		
Result key:	6		
Scenario	6 Affected station	4	
Before Analysis			
Results for: 19A IL CHICAGO	BLCDT	20040316ACQ	LIC
HAAT 453.0 m, ATV ERP 645.0 kW			
	POPULATION	AREA (sq km)	
within Noise Limited Contour	9560634	33065.1	
not affected by terrain losses	9556156	33025.0	
lost to NTSC IX	0	0.0	
lost to additional IX by ATV	46126	1364.7	
lost to ATV IX only	46126	1364.7	
lost to all IX	46126	1364.7	
Potential Interfering Stations Included in above Scenario	6		
18A WI MILWAUKEE	BPCDT	20080317AGE	CP
19A IL PEORIA	BPCDT	20080317AHQ	CP
19A IN FORT WAYNE	BLCDT	20070509AEQ	LIC
19A WI MADISON	DTVPLN	DTVP0708	PLN
19A MI GRAND RAPIDS	DTVPLN	DTVP0685	PLN

Figure 3

After Analysis			
Results for: 19A IL CHICAGO	BLCDT	20040316ACQ	LIC
HAAT 453.0 m, ATV ERP 645.0 kW			
	POPULATION	AREA (sq km)	
within Noise Limited Contour	9560634	33065.1	
not affected by terrain losses	9556156	33025.0	
lost to NTSC IX	0	0.0	
lost to additional IX by ATV	44001	1284.4	
lost to ATV IX only	44001	1284.4	
lost to all IX	44001	1284.4	
Potential Interfering Stations Included in above Scenario	6		
18A WI MILWAUKEE	BPCDT	20080317AGE	CP
19A IL PEORIA	BPCDT	20080317AHQ	CP
19A IN FORT WAYNE	BLCDT	20070509AEQ	LIC
19A WI MADISON	DTVPLN	DTVP0708	PLN
19A MI GRAND RAPIDS	USERRECORD01		APP
Percent new IX =	-0.0223%		
Result key:	7		
Scenario	7 Affected station	4	
Before Analysis			
Results for: 19A IL CHICAGO	BLCDT	20040316ACQ	LIC
HAAT 453.0 m, ATV ERP 645.0 kW			
	POPULATION	AREA (sq km)	
within Noise Limited Contour	9560634	33065.1	
not affected by terrain losses	9556156	33025.0	
lost to NTSC IX	0	0.0	
lost to additional IX by ATV	46126	1364.7	
lost to ATV IX only	46126	1364.7	
lost to all IX	46126	1364.7	
Potential Interfering Stations Included in above Scenario	7		
18A WI MILWAUKEE	BPCDT	20080317AGE	CP
19A IL PEORIA	BPCDT	20080317AHQ	CP
19A IN FORT WAYNE	DTVPLN	DTVP0679	PLN
19A WI MADISON	BLCDT	20040823ABP	LIC
19A MI GRAND RAPIDS	DTVPLN	DTVP0685	PLN
After Analysis			
Results for: 19A IL CHICAGO	BLCDT	20040316ACQ	LIC
HAAT 453.0 m, ATV ERP 645.0 kW			
	POPULATION	AREA (sq km)	
within Noise Limited Contour	9560634	33065.1	
not affected by terrain losses	9556156	33025.0	
lost to NTSC IX	0	0.0	
lost to additional IX by ATV	44001	1284.4	
lost to ATV IX only	44001	1284.4	
lost to all IX	44001	1284.4	

Figure 3

Potential Interfering Stations Included in above Scenario 7

18A WI MILWAUKEE	BPCDT	20080317AGE	CP
19A IL PEORIA	BPCDT	20080317AHQ	CP
19A IN FORT WAYNE	DTVPLN	DTVP0679	PLN
19A WI MADISON	BLCDT	20040823ABP	LIC
19A MI GRAND RAPIDS	USERRECORD01		APP

Percent new IX = -0.0223%

Result key: 8
Scenario 8 Affected station 4
Before Analysis

Results for: 19A IL CHICAGO BLCDT 20040316ACQ LIC

HAAT 453.0 m, ATV ERP 645.0 kW	POPULATION	AREA (sq km)
within Noise Limited Contour	9560634	33065.1
not affected by terrain losses	9556156	33025.0
lost to NTSC IX	0	0.0
lost to additional IX by ATV	46126	1364.7
lost to ATV IX only	46126	1364.7
lost to all IX	46126	1364.7

Potential Interfering Stations Included in above Scenario 8

18A WI MILWAUKEE	BPCDT	20080317AGE	CP
19A IL PEORIA	BPCDT	20080317AHQ	CP
19A IN FORT WAYNE	DTVPLN	DTVP0679	PLN
19A WI MADISON	DTVPLN	DTVP0708	PLN
19A MI GRAND RAPIDS	DTVPLN	DTVP0685	PLN

After Analysis

Results for: 19A IL CHICAGO BLCDT 20040316ACQ LIC

HAAT 453.0 m, ATV ERP 645.0 kW	POPULATION	AREA (sq km)
within Noise Limited Contour	9560634	33065.1
not affected by terrain losses	9556156	33025.0
lost to NTSC IX	0	0.0
lost to additional IX by ATV	44001	1284.4
lost to ATV IX only	44001	1284.4
lost to all IX	44001	1284.4

Potential Interfering Stations Included in above Scenario 8

18A WI MILWAUKEE	BPCDT	20080317AGE	CP
19A IL PEORIA	BPCDT	20080317AHQ	CP
19A IN FORT WAYNE	DTVPLN	DTVP0679	PLN
19A WI MADISON	DTVPLN	DTVP0708	PLN
19A MI GRAND RAPIDS	USERRECORD01		APP

Percent new IX = -0.0223%

Result key: 9
Scenario 9 Affected station 4
Before Analysis

Figure 3

Results for: 19A IL CHICAGO BLCDT 20040316ACQ LIC

HAAT 453.0 m, ATV ERP 645.0 kW	POPULATION	AREA (sq km)
within Noise Limited Contour	9560634	33065.1
not affected by terrain losses	9556156	33025.0
lost to NTSC IX	0	0.0
lost to additional IX by ATV	46722	1380.7
lost to ATV IX only	46722	1380.7
lost to all IX	46722	1380.7

Potential Interfering Stations Included in above Scenario 9

18A WI MILWAUKEE	DTVPLN	DTVP0662	PLN
19A IL PEORIA	DTVPLN	DTVP0678	PLN
19A IN FORT WAYNE	BLCDT	20070509AEQ	LIC
19A WI MADISON	BLCDT	20040823ABP	LIC
19A MI GRAND RAPIDS	DTVPLN	DTVP0685	PLN

After Analysis

Results for: 19A IL CHICAGO BLCDT 20040316ACQ LIC

HAAT 453.0 m, ATV ERP 645.0 kW	POPULATION	AREA (sq km)
within Noise Limited Contour	9560634	33065.1
not affected by terrain losses	9556156	33025.0
lost to NTSC IX	0	0.0
lost to additional IX by ATV	44597	1300.4
lost to ATV IX only	44597	1300.4
lost to all IX	44597	1300.4

Potential Interfering Stations Included in above Scenario 9

18A WI MILWAUKEE	DTVPLN	DTVP0662	PLN
19A IL PEORIA	DTVPLN	DTVP0678	PLN
19A IN FORT WAYNE	BLCDT	20070509AEQ	LIC
19A WI MADISON	BLCDT	20040823ABP	LIC
19A MI GRAND RAPIDS	USERRECORD01		APP

Percent new IX = -0.0223%

Result key: 10
Scenario 10 Affected station 4
Before Analysis

Results for: 19A IL CHICAGO BLCDT 20040316ACQ LIC

HAAT 453.0 m, ATV ERP 645.0 kW	POPULATION	AREA (sq km)
within Noise Limited Contour	9560634	33065.1
not affected by terrain losses	9556156	33025.0
lost to NTSC IX	0	0.0
lost to additional IX by ATV	46722	1380.7
lost to ATV IX only	46722	1380.7
lost to all IX	46722	1380.7

Potential Interfering Stations Included in above Scenario 10

Figure 3

18A WI MILWAUKEE	DTVPLN	DTVP0662	PLN
19A IL PEORIA	DTVPLN	DTVP0678	PLN
19A IN FORT WAYNE	BLCDDT	20070509AEQ	LIC
19A WI MADISON	DTVPLN	DTVP0708	PLN
19A MI GRAND RAPIDS	DTVPLN	DTVP0685	PLN

After Analysis

Results for: 19A IL CHICAGO BLCDDT 20040316ACQ LIC

HAAT 453.0 m, ATV ERP 645.0 kW

	POPULATION	AREA (sq km)
within Noise Limited Contour	9560634	33065.1
not affected by terrain losses	9556156	33025.0
lost to NTSC IX	0	0.0
lost to additional IX by ATV	44597	1300.4
lost to ATV IX only	44597	1300.4
lost to all IX	44597	1300.4

Potential Interfering Stations Included in above Scenario 10

18A WI MILWAUKEE	DTVPLN	DTVP0662	PLN
19A IL PEORIA	DTVPLN	DTVP0678	PLN
19A IN FORT WAYNE	BLCDDT	20070509AEQ	LIC
19A WI MADISON	DTVPLN	DTVP0708	PLN
19A MI GRAND RAPIDS	USERRECORD01		APP

Percent new IX = -0.0223%

Result key: 11

Scenario 11 Affected station 4

Before Analysis

Results for: 19A IL CHICAGO BLCDDT 20040316ACQ LIC

HAAT 453.0 m, ATV ERP 645.0 kW

	POPULATION	AREA (sq km)
within Noise Limited Contour	9560634	33065.1
not affected by terrain losses	9556156	33025.0
lost to NTSC IX	0	0.0
lost to additional IX by ATV	46722	1380.7
lost to ATV IX only	46722	1380.7
lost to all IX	46722	1380.7

Potential Interfering Stations Included in above Scenario 11

18A WI MILWAUKEE	DTVPLN	DTVP0662	PLN
19A IL PEORIA	DTVPLN	DTVP0678	PLN
19A IN FORT WAYNE	DTVPLN	DTVP0679	PLN
19A WI MADISON	BLCDDT	20040823ABP	LIC
19A MI GRAND RAPIDS	DTVPLN	DTVP0685	PLN

After Analysis

Results for: 19A IL CHICAGO BLCDDT 20040316ACQ LIC

HAAT 453.0 m, ATV ERP 645.0 kW

	POPULATION	AREA (sq km)
within Noise Limited Contour	9560634	33065.1
not affected by terrain losses	9556156	33025.0

Figure 3

lost to NTSC IX	0	0.0
lost to additional IX by ATV	44597	1300.4
lost to ATV IX only	44597	1300.4
lost to all IX	44597	1300.4

Potential Interfering Stations Included in above Scenario 11

18A WI MILWAUKEE	DTVPLN	DTVP0662	PLN
19A IL PEORIA	DTVPLN	DTVP0678	PLN
19A IN FORT WAYNE	DTVPLN	DTVP0679	PLN
19A WI MADISON	BLCDDT	20040823ABP	LIC
19A MI GRAND RAPIDS	USERRECORD01		APP

Percent new IX = -0.0223%

Result key: 12

Scenario 12 Affected station 4

Before Analysis

Results for: 19A IL CHICAGO BLCDDT 20040316ACQ LIC

HAAT 453.0 m, ATV ERP 645.0 kW

	POPULATION	AREA (sq km)
within Noise Limited Contour	9560634	33065.1
not affected by terrain losses	9556156	33025.0
lost to NTSC IX	0	0.0
lost to additional IX by ATV	46722	1380.7
lost to ATV IX only	46722	1380.7
lost to all IX	46722	1380.7

Potential Interfering Stations Included in above Scenario 12

18A WI MILWAUKEE	DTVPLN	DTVP0662	PLN
19A IL PEORIA	DTVPLN	DTVP0678	PLN
19A IN FORT WAYNE	DTVPLN	DTVP0679	PLN
19A WI MADISON	DTVPLN	DTVP0708	PLN
19A MI GRAND RAPIDS	DTVPLN	DTVP0685	PLN

After Analysis

Results for: 19A IL CHICAGO BLCDDT 20040316ACQ LIC

HAAT 453.0 m, ATV ERP 645.0 kW

	POPULATION	AREA (sq km)
within Noise Limited Contour	9560634	33065.1
not affected by terrain losses	9556156	33025.0
lost to NTSC IX	0	0.0
lost to additional IX by ATV	44597	1300.4
lost to ATV IX only	44597	1300.4
lost to all IX	44597	1300.4

Potential Interfering Stations Included in above Scenario 12

18A WI MILWAUKEE	DTVPLN	DTVP0662	PLN
19A IL PEORIA	DTVPLN	DTVP0678	PLN
19A IN FORT WAYNE	DTVPLN	DTVP0679	PLN
19A WI MADISON	DTVPLN	DTVP0708	PLN
19A MI GRAND RAPIDS	USERRECORD01		APP

Figure 3

Percent new IX = -0.0223%

Result key: 13
Scenario 13 Affected station 4
Before Analysis

Results for: 19A IL CHICAGO BLCDDT 20040316ACQ LIC
HAAT 453.0 m, ATV ERP 645.0 kW

	POPULATION	AREA (sq km)
within Noise Limited Contour	9560634	33065.1
not affected by terrain losses	9556156	33025.0
lost to NTSC IX	0	0.0
lost to additional IX by ATV	46126	1364.7
lost to ATV IX only	46126	1364.7
lost to all IX	46126	1364.7

Potential Interfering Stations Included in above Scenario 13

18A WI MILWAUKEE	DTVPLN	DTVP0662	PLN
19A IL PEORIA	BPCDDT	20080317AHQ	CP
19A IN FORT WAYNE	BLCDDT	20070509AEQ	LIC
19A WI MADISON	BLCDDT	20040823ABP	LIC
19A MI GRAND RAPIDS	DTVPLN	DTVP0685	PLN

After Analysis

Results for: 19A IL CHICAGO BLCDDT 20040316ACQ LIC
HAAT 453.0 m, ATV ERP 645.0 kW

	POPULATION	AREA (sq km)
within Noise Limited Contour	9560634	33065.1
not affected by terrain losses	9556156	33025.0
lost to NTSC IX	0	0.0
lost to additional IX by ATV	44001	1284.4
lost to ATV IX only	44001	1284.4
lost to all IX	44001	1284.4

Potential Interfering Stations Included in above Scenario 13

18A WI MILWAUKEE	DTVPLN	DTVP0662	PLN
19A IL PEORIA	BPCDDT	20080317AHQ	CP
19A IN FORT WAYNE	BLCDDT	20070509AEQ	LIC
19A WI MADISON	BLCDDT	20040823ABP	LIC
19A MI GRAND RAPIDS	USERRECORD01		APP

Percent new IX = -0.0223%

Result key: 14
Scenario 14 Affected station 4
Before Analysis

Results for: 19A IL CHICAGO BLCDDT 20040316ACQ LIC
HAAT 453.0 m, ATV ERP 645.0 kW

	POPULATION	AREA (sq km)
within Noise Limited Contour	9560634	33065.1
not affected by terrain losses	9556156	33025.0
lost to NTSC IX	0	0.0
lost to additional IX by ATV	46126	1364.7

Figure 3

lost to ATV IX only	46126	1364.7
lost to all IX	46126	1364.7

Potential Interfering Stations Included in above Scenario 14

18A WI MILWAUKEE	DTVPLN	DTVP0662	PLN
19A IL PEORIA	BPCDDT	20080317AHQ	CP
19A IN FORT WAYNE	BLCDDT	20070509AEQ	LIC
19A WI MADISON	DTVPLN	DTVP0708	PLN
19A MI GRAND RAPIDS	DTVPLN	DTVP0685	PLN

After Analysis

Results for: 19A IL CHICAGO BLCDDT 20040316ACQ LIC
HAAT 453.0 m, ATV ERP 645.0 kW

	POPULATION	AREA (sq km)
within Noise Limited Contour	9560634	33065.1
not affected by terrain losses	9556156	33025.0
lost to NTSC IX	0	0.0
lost to additional IX by ATV	44001	1284.4
lost to ATV IX only	44001	1284.4
lost to all IX	44001	1284.4

Potential Interfering Stations Included in above Scenario 14

18A WI MILWAUKEE	DTVPLN	DTVP0662	PLN
19A IL PEORIA	BPCDDT	20080317AHQ	CP
19A IN FORT WAYNE	BLCDDT	20070509AEQ	LIC
19A WI MADISON	DTVPLN	DTVP0708	PLN
19A MI GRAND RAPIDS	USERRECORD01		APP

Percent new IX = -0.0223%

Result key: 15
Scenario 15 Affected station 4
Before Analysis

Results for: 19A IL CHICAGO BLCDDT 20040316ACQ LIC
HAAT 453.0 m, ATV ERP 645.0 kW

	POPULATION	AREA (sq km)
within Noise Limited Contour	9560634	33065.1
not affected by terrain losses	9556156	33025.0
lost to NTSC IX	0	0.0
lost to additional IX by ATV	46126	1364.7
lost to ATV IX only	46126	1364.7
lost to all IX	46126	1364.7

Potential Interfering Stations Included in above Scenario 15

18A WI MILWAUKEE	DTVPLN	DTVP0662	PLN
19A IL PEORIA	BPCDDT	20080317AHQ	CP
19A IN FORT WAYNE	DTVPLN	DTVP0679	PLN
19A WI MADISON	BLCDDT	20040823ABP	LIC
19A MI GRAND RAPIDS	DTVPLN	DTVP0685	PLN

After Analysis

Figure 3

Results for: 19A IL CHICAGO BLCDDT 20040316ACQ LIC
 HAAT 453.0 m, ATV ERP 645.0 kW

	POPULATION	AREA (sq km)
within Noise Limited Contour	9560634	33065.1
not affected by terrain losses	9556156	33025.0
lost to NTSC IX	0	0.0
lost to additional IX by ATV	44001	1284.4
lost to ATV IX only	44001	1284.4
lost to all IX	44001	1284.4

Potential Interfering Stations Included in above Scenario 15

18A WI MILWAUKEE	DTVPLN	DTVP0662	PLN
19A IL PEORIA	BPCDDT	20080317AHQ	CP
19A IN FORT WAYNE	DTVPLN	DTVP0679	PLN
19A WI MADISON	BLCDDT	20040823ABP	LIC
19A MI GRAND RAPIDS	USERRECORD01		APP

Percent new IX = -0.0223%

Result key: 16
 Scenario 16 Affected station 4
 Before Analysis

Results for: 19A IL CHICAGO BLCDDT 20040316ACQ LIC
 HAAT 453.0 m, ATV ERP 645.0 kW

	POPULATION	AREA (sq km)
within Noise Limited Contour	9560634	33065.1
not affected by terrain losses	9556156	33025.0
lost to NTSC IX	0	0.0
lost to additional IX by ATV	46126	1364.7
lost to ATV IX only	46126	1364.7
lost to all IX	46126	1364.7

Potential Interfering Stations Included in above Scenario 16

18A WI MILWAUKEE	DTVPLN	DTVP0662	PLN
19A IL PEORIA	BPCDDT	20080317AHQ	CP
19A IN FORT WAYNE	DTVPLN	DTVP0679	PLN
19A WI MADISON	DTVPLN	DTVP0708	PLN
19A MI GRAND RAPIDS	DTVPLN	DTVP0685	PLN

After Analysis

Results for: 19A IL CHICAGO BLCDDT 20040316ACQ LIC
 HAAT 453.0 m, ATV ERP 645.0 kW

	POPULATION	AREA (sq km)
within Noise Limited Contour	9560634	33065.1
not affected by terrain losses	9556156	33025.0
lost to NTSC IX	0	0.0
lost to additional IX by ATV	44001	1284.4
lost to ATV IX only	44001	1284.4
lost to all IX	44001	1284.4

Potential Interfering Stations Included in above Scenario 16

18A WI MILWAUKEE	DTVPLN	DTVP0662	PLN
------------------	--------	----------	-----

Figure 3

19A IL PEORIA	BPCDDT	20080317AHQ	CP
19A IN FORT WAYNE	DTVPLN	DTVP0679	PLN
19A WI MADISON	DTVPLN	DTVP0708	PLN
19A MI GRAND RAPIDS	USERRECORD01		APP

Percent new IX = -0.0223%

Worst case new IX -0.0223% Scenario 5

#####

Analysis of Interference to Affected Station 5

Analysis of current record

Channel	Call	City/State	Application Ref. No.
19	WGN-TV	CHICAGO IL	DTVPLN -DTVP0676

Stations Potentially Affecting This Station

Chan	Call	City/State	Dist(km)	Status	Application Ref. No.
18	WVTV	MILWAUKEE WI	137.0	CP	BPCDDT -20080317AGE
18	WVTV	MILWAUKEE WI	137.0	PLN	DTVPLN -DTVP0662
19	WUSI-TV	OLNEY IL	340.5	LIC	BLEDT -20060619ABG
19	WUSI-TV	OLNEY IL	340.5	PLN	DTVPLN -DTVP0677
19	WHOI	PEORIA IL	212.4	PLN	DTVPLN -DTVP0678
19	WHOI	PEORIA IL	212.4	CP	BPCDDT -20080317AHQ
19	WISE-TV	FORT WAYNE IN	222.6	LIC	BLCDDT -20070509AEQ
19	WISE-TV	FORT WAYNE IN	222.6	PLN	DTVPLN -DTVP0679
19	WXMI	GRAND RAPIDS MI	194.9	PLN	DTVPLN -DTVP0685
19	WMTV	MADISON WI	200.0	LIC	BLCDDT -20040823ABP
19	WMTV	MADISON WI	200.0	PLN	DTVPLN -DTVP0708
20	WOTV	BATTLE CREEK MI	194.3	LIC	BLCDDT -20030721AHS
20	WOTV	BATTLE CREEK MI	194.3	PLN	DTVPLN -DTVP0728
20	WHA-TV	MADISON WI	203.3	LIC	BLEDT -20020503AAF
20	WHA-TV	MADISON WI	203.3	PLN	DTVPLN -DTVP0748
19	WXMI	GRAND RAPIDS MI	194.9	APP	USERRECORD-01

Total scenarios = 16

Result key: 17
 Scenario 1 Affected station 5
 Before Analysis

Results for: 19A IL CHICAGO DTVPLN DTVP0676 PLN
 HAAT 453.0 m, ATV ERP 645.0 kW

	POPULATION	AREA (sq km)
within Noise Limited Contour	9560634	33065.1
not affected by terrain losses	9556156	33025.0
lost to NTSC IX	0	0.0
lost to additional IX by ATV	46722	1380.7
lost to ATV IX only	46722	1380.7
lost to all IX	46722	1380.7

Potential Interfering Stations Included in above Scenario 1

Figure 3

18A WI MILWAUKEE	BPCDT	20080317AGE	CP
19A IL PEORIA	DTVPLN	DTVP0678	PLN
19A IN FORT WAYNE	BLCDT	20070509AEQ	LIC
19A WI MADISON	BLCDT	20040823ABP	LIC
19A MI GRAND RAPIDS	DTVPLN	DTVP0685	PLN

After Analysis

Results for: 19A IL CHICAGO	DTVPLN	DTVP0676	PLN
HAAT 453.0 m, ATV ERP 645.0 kW			
	POPULATION	AREA (sq km)	
within Noise Limited Contour	9560634	33065.1	
not affected by terrain losses	9556156	33025.0	
lost to NTSC IX	0	0.0	
lost to additional IX by ATV	44597	1300.4	
lost to ATV IX only	44597	1300.4	
lost to all IX	44597	1300.4	

Potential Interfering Stations Included in above Scenario 1

18A WI MILWAUKEE	BPCDT	20080317AGE	CP
19A IL PEORIA	DTVPLN	DTVP0678	PLN
19A IN FORT WAYNE	BLCDT	20070509AEQ	LIC
19A WI MADISON	BLCDT	20040823ABP	LIC
19A MI GRAND RAPIDS	USERRECORD01		APP

Percent new IX = -0.0223%

Result key: 18
Scenario 2 Affected station 5
Before Analysis

Results for: 19A IL CHICAGO	DTVPLN	DTVP0676	PLN
HAAT 453.0 m, ATV ERP 645.0 kW			
	POPULATION	AREA (sq km)	
within Noise Limited Contour	9560634	33065.1	
not affected by terrain losses	9556156	33025.0	
lost to NTSC IX	0	0.0	
lost to additional IX by ATV	46722	1380.7	
lost to ATV IX only	46722	1380.7	
lost to all IX	46722	1380.7	

Potential Interfering Stations Included in above Scenario 2

18A WI MILWAUKEE	BPCDT	20080317AGE	CP
19A IL PEORIA	DTVPLN	DTVP0678	PLN
19A IN FORT WAYNE	BLCDT	20070509AEQ	LIC
19A WI MADISON	DTVPLN	DTVP0708	PLN
19A MI GRAND RAPIDS	DTVPLN	DTVP0685	PLN

After Analysis

Results for: 19A IL CHICAGO	DTVPLN	DTVP0676	PLN
HAAT 453.0 m, ATV ERP 645.0 kW			
	POPULATION	AREA (sq km)	
within Noise Limited Contour	9560634	33065.1	

Figure 3

not affected by terrain losses	9556156	33025.0
lost to NTSC IX	0	0.0
lost to additional IX by ATV	44597	1300.4
lost to ATV IX only	44597	1300.4
lost to all IX	44597	1300.4

Potential Interfering Stations Included in above Scenario 2

18A WI MILWAUKEE	BPCDT	20080317AGE	CP
19A IL PEORIA	DTVPLN	DTVP0678	PLN
19A IN FORT WAYNE	BLCDT	20070509AEQ	LIC
19A WI MADISON	DTVPLN	DTVP0708	PLN
19A MI GRAND RAPIDS	USERRECORD01		APP

Percent new IX = -0.0223%

Result key: 19
Scenario 3 Affected station 5
Before Analysis

Results for: 19A IL CHICAGO	DTVPLN	DTVP0676	PLN
HAAT 453.0 m, ATV ERP 645.0 kW			
	POPULATION	AREA (sq km)	
within Noise Limited Contour	9560634	33065.1	
not affected by terrain losses	9556156	33025.0	
lost to NTSC IX	0	0.0	
lost to additional IX by ATV	46722	1380.7	
lost to ATV IX only	46722	1380.7	
lost to all IX	46722	1380.7	

Potential Interfering Stations Included in above Scenario 3

18A WI MILWAUKEE	BPCDT	20080317AGE	CP
19A IL PEORIA	DTVPLN	DTVP0678	PLN
19A IN FORT WAYNE	DTVPLN	DTVP0679	PLN
19A WI MADISON	BLCDT	20040823ABP	LIC
19A MI GRAND RAPIDS	DTVPLN	DTVP0685	PLN

After Analysis

Results for: 19A IL CHICAGO	DTVPLN	DTVP0676	PLN
HAAT 453.0 m, ATV ERP 645.0 kW			
	POPULATION	AREA (sq km)	
within Noise Limited Contour	9560634	33065.1	
not affected by terrain losses	9556156	33025.0	
lost to NTSC IX	0	0.0	
lost to additional IX by ATV	44597	1300.4	
lost to ATV IX only	44597	1300.4	
lost to all IX	44597	1300.4	

Potential Interfering Stations Included in above Scenario 3

18A WI MILWAUKEE	BPCDT	20080317AGE	CP
19A IL PEORIA	DTVPLN	DTVP0678	PLN
19A IN FORT WAYNE	DTVPLN	DTVP0679	PLN
19A WI MADISON	BLCDT	20040823ABP	LIC
19A MI GRAND RAPIDS	USERRECORD01		APP

Figure 3

Percent new IX = -0.0223%

Result key: 20

Scenario 4 Affected station 5
Before Analysis

Results for: 19A IL CHICAGO DTVPLN DTVP0676 PLN
HAAT 453.0 m, ATV ERP 645.0 kW

	POPULATION	AREA (sq km)
within Noise Limited Contour	9560634	33065.1
not affected by terrain losses	9556156	33025.0
lost to NTSC IX	0	0.0
lost to additional IX by ATV	46722	1380.7
lost to ATV IX only	46722	1380.7
lost to all IX	46722	1380.7

Potential Interfering Stations Included in above Scenario 4

18A WI MILWAUKEE	BPCDT	20080317AGE	CP
19A IL PEORIA	DTVPLN	DTV0678	PLN
19A IN FORT WAYNE	DTVPLN	DTV0679	PLN
19A WI MADISON	DTVPLN	DTV0708	PLN
19A MI GRAND RAPIDS	DTVPLN	DTV0685	PLN

After Analysis

Results for: 19A IL CHICAGO DTVPLN DTVP0676 PLN
HAAT 453.0 m, ATV ERP 645.0 kW

	POPULATION	AREA (sq km)
within Noise Limited Contour	9560634	33065.1
not affected by terrain losses	9556156	33025.0
lost to NTSC IX	0	0.0
lost to additional IX by ATV	44597	1300.4
lost to ATV IX only	44597	1300.4
lost to all IX	44597	1300.4

Potential Interfering Stations Included in above Scenario 4

18A WI MILWAUKEE	BPCDT	20080317AGE	CP
19A IL PEORIA	DTVPLN	DTV0678	PLN
19A IN FORT WAYNE	DTVPLN	DTV0679	PLN
19A WI MADISON	DTVPLN	DTV0708	PLN
19A MI GRAND RAPIDS	USERRECORD01		APP

Percent new IX = -0.0223%

Result key: 21

Scenario 5 Affected station 5
Before Analysis

Results for: 19A IL CHICAGO DTVPLN DTVP0676 PLN
HAAT 453.0 m, ATV ERP 645.0 kW

	POPULATION	AREA (sq km)
within Noise Limited Contour	9560634	33065.1
not affected by terrain losses	9556156	33025.0
lost to NTSC IX	0	0.0

Figure 3

lost to additional IX by ATV	46126	1364.7
lost to ATV IX only	46126	1364.7
lost to all IX	46126	1364.7

Potential Interfering Stations Included in above Scenario 5

18A WI MILWAUKEE	BPCDT	20080317AGE	CP
19A IL PEORIA	BPCDT	20080317AHQ	CP
19A IN FORT WAYNE	BLCDT	20070509AEQ	LIC
19A WI MADISON	BLCDT	20040823ABP	LIC
19A MI GRAND RAPIDS	DTVPLN	DTV0685	PLN

After Analysis

Results for: 19A IL CHICAGO DTVPLN DTVP0676 PLN
HAAT 453.0 m, ATV ERP 645.0 kW

	POPULATION	AREA (sq km)
within Noise Limited Contour	9560634	33065.1
not affected by terrain losses	9556156	33025.0
lost to NTSC IX	0	0.0
lost to additional IX by ATV	44001	1284.4
lost to ATV IX only	44001	1284.4
lost to all IX	44001	1284.4

Potential Interfering Stations Included in above Scenario 5

18A WI MILWAUKEE	BPCDT	20080317AGE	CP
19A IL PEORIA	BPCDT	20080317AHQ	CP
19A IN FORT WAYNE	BLCDT	20070509AEQ	LIC
19A WI MADISON	BLCDT	20040823ABP	LIC
19A MI GRAND RAPIDS	USERRECORD01		APP

Percent new IX = -0.0223%

Result key: 22

Scenario 6 Affected station 5
Before Analysis

Results for: 19A IL CHICAGO DTVPLN DTVP0676 PLN
HAAT 453.0 m, ATV ERP 645.0 kW

	POPULATION	AREA (sq km)
within Noise Limited Contour	9560634	33065.1
not affected by terrain losses	9556156	33025.0
lost to NTSC IX	0	0.0
lost to additional IX by ATV	46126	1364.7
lost to ATV IX only	46126	1364.7
lost to all IX	46126	1364.7

Potential Interfering Stations Included in above Scenario 6

18A WI MILWAUKEE	BPCDT	20080317AGE	CP
19A IL PEORIA	BPCDT	20080317AHQ	CP
19A IN FORT WAYNE	BLCDT	20070509AEQ	LIC
19A WI MADISON	DTVPLN	DTV0708	PLN
19A MI GRAND RAPIDS	DTVPLN	DTV0685	PLN

After Analysis

Figure 3

Results for: 19A IL CHICAGO DTVPLN DTVP0676 PLN
 HAAT 453.0 m, ATV ERP 645.0 kW

	POPULATION	AREA (sq km)
within Noise Limited Contour	9560634	33065.1
not affected by terrain losses	9556156	33025.0
lost to NTSC IX	0	0.0
lost to additional IX by ATV	44001	1284.4
lost to ATV IX only	44001	1284.4
lost to all IX	44001	1284.4

Potential Interfering Stations Included in above Scenario 6

18A WI MILWAUKEE	BPCDT	20080317AGE	CP
19A IL PEORIA	BPCDT	20080317AHQ	CP
19A IN FORT WAYNE	BLCDT	20070509AEQ	LIC
19A WI MADISON	DTVPLN	DTVP0708	PLN
19A MI GRAND RAPIDS	USERRECORD01		APP

Percent new IX = -0.0223%

Result key: 23
 Scenario 7 Affected station 5
 Before Analysis

Results for: 19A IL CHICAGO DTVPLN DTVP0676 PLN
 HAAT 453.0 m, ATV ERP 645.0 kW

	POPULATION	AREA (sq km)
within Noise Limited Contour	9560634	33065.1
not affected by terrain losses	9556156	33025.0
lost to NTSC IX	0	0.0
lost to additional IX by ATV	46126	1364.7
lost to ATV IX only	46126	1364.7
lost to all IX	46126	1364.7

Potential Interfering Stations Included in above Scenario 7

18A WI MILWAUKEE	BPCDT	20080317AGE	CP
19A IL PEORIA	BPCDT	20080317AHQ	CP
19A IN FORT WAYNE	DTVPLN	DTVP0679	PLN
19A WI MADISON	BLCDT	20040823ABP	LIC
19A MI GRAND RAPIDS	DTVPLN	DTVP0685	PLN

After Analysis

Results for: 19A IL CHICAGO DTVPLN DTVP0676 PLN
 HAAT 453.0 m, ATV ERP 645.0 kW

	POPULATION	AREA (sq km)
within Noise Limited Contour	9560634	33065.1
not affected by terrain losses	9556156	33025.0
lost to NTSC IX	0	0.0
lost to additional IX by ATV	44001	1284.4
lost to ATV IX only	44001	1284.4
lost to all IX	44001	1284.4

Potential Interfering Stations Included in above Scenario 7

Figure 3

18A WI MILWAUKEE	BPCDT	20080317AGE	CP
19A IL PEORIA	BPCDT	20080317AHQ	CP
19A IN FORT WAYNE	DTVPLN	DTVP0679	PLN
19A WI MADISON	BLCDT	20040823ABP	LIC
19A MI GRAND RAPIDS	USERRECORD01		APP

Percent new IX = -0.0223%

Result key: 24
 Scenario 8 Affected station 5
 Before Analysis

Results for: 19A IL CHICAGO DTVPLN DTVP0676 PLN
 HAAT 453.0 m, ATV ERP 645.0 kW

	POPULATION	AREA (sq km)
within Noise Limited Contour	9560634	33065.1
not affected by terrain losses	9556156	33025.0
lost to NTSC IX	0	0.0
lost to additional IX by ATV	46126	1364.7
lost to ATV IX only	46126	1364.7
lost to all IX	46126	1364.7

Potential Interfering Stations Included in above Scenario 8

18A WI MILWAUKEE	BPCDT	20080317AGE	CP
19A IL PEORIA	BPCDT	20080317AHQ	CP
19A IN FORT WAYNE	DTVPLN	DTVP0679	PLN
19A WI MADISON	DTVPLN	DTVP0708	PLN
19A MI GRAND RAPIDS	DTVPLN	DTVP0685	PLN

After Analysis

Results for: 19A IL CHICAGO DTVPLN DTVP0676 PLN
 HAAT 453.0 m, ATV ERP 645.0 kW

	POPULATION	AREA (sq km)
within Noise Limited Contour	9560634	33065.1
not affected by terrain losses	9556156	33025.0
lost to NTSC IX	0	0.0
lost to additional IX by ATV	44001	1284.4
lost to ATV IX only	44001	1284.4
lost to all IX	44001	1284.4

Potential Interfering Stations Included in above Scenario 8

18A WI MILWAUKEE	BPCDT	20080317AGE	CP
19A IL PEORIA	BPCDT	20080317AHQ	CP
19A IN FORT WAYNE	DTVPLN	DTVP0679	PLN
19A WI MADISON	DTVPLN	DTVP0708	PLN
19A MI GRAND RAPIDS	USERRECORD01		APP

Percent new IX = -0.0223%

Result key: 25
 Scenario 9 Affected station 5
 Before Analysis

Results for: 19A IL CHICAGO DTVPLN DTVP0676 PLN

Figure 3

HAAT 453.0 m, ATV ERP 645.0 kW

	POPULATION	AREA (sq km)
within Noise Limited Contour	9560634	33065.1
not affected by terrain losses	9556156	33025.0
lost to NTSC IX	0	0.0
lost to additional IX by ATV	46722	1380.7
lost to ATV IX only	46722	1380.7
lost to all IX	46722	1380.7

Potential Interfering Stations Included in above Scenario 9

18A WI MILWAUKEE	DTVPLN	DTVP0662	PLN
19A IL PEORIA	DTVPLN	DTVP0678	PLN
19A IN FORT WAYNE	BLCDT	20070509AEQ	LIC
19A WI MADISON	BLCDT	20040823ABP	LIC
19A MI GRAND RAPIDS	DTVPLN	DTVP0685	PLN

After Analysis

Results for: 19A IL CHICAGO DTVPLN DTVP0676 PLN

HAAT 453.0 m, ATV ERP 645.0 kW

	POPULATION	AREA (sq km)
within Noise Limited Contour	9560634	33065.1
not affected by terrain losses	9556156	33025.0
lost to NTSC IX	0	0.0
lost to additional IX by ATV	44597	1300.4
lost to ATV IX only	44597	1300.4
lost to all IX	44597	1300.4

Potential Interfering Stations Included in above Scenario 9

18A WI MILWAUKEE	DTVPLN	DTVP0662	PLN
19A IL PEORIA	DTVPLN	DTVP0678	PLN
19A IN FORT WAYNE	BLCDT	20070509AEQ	LIC
19A WI MADISON	BLCDT	20040823ABP	LIC
19A MI GRAND RAPIDS	USERRECORD01		APP

Percent new IX = -0.0223%

Result key: 26

Scenario 10 Affected station 5

Before Analysis

Results for: 19A IL CHICAGO DTVPLN DTVP0676 PLN

HAAT 453.0 m, ATV ERP 645.0 kW

	POPULATION	AREA (sq km)
within Noise Limited Contour	9560634	33065.1
not affected by terrain losses	9556156	33025.0
lost to NTSC IX	0	0.0
lost to additional IX by ATV	46722	1380.7
lost to ATV IX only	46722	1380.7
lost to all IX	46722	1380.7

Potential Interfering Stations Included in above Scenario 10

18A WI MILWAUKEE	DTVPLN	DTVP0662	PLN
19A IL PEORIA	DTVPLN	DTVP0678	PLN

Figure 3

19A IN FORT WAYNE	BLCDT	20070509AEQ	LIC
19A WI MADISON	DTVPLN	DTVP0708	PLN
19A MI GRAND RAPIDS	DTVPLN	DTVP0685	PLN

After Analysis

Results for: 19A IL CHICAGO DTVPLN DTVP0676 PLN

HAAT 453.0 m, ATV ERP 645.0 kW

	POPULATION	AREA (sq km)
within Noise Limited Contour	9560634	33065.1
not affected by terrain losses	9556156	33025.0
lost to NTSC IX	0	0.0
lost to additional IX by ATV	44597	1300.4
lost to ATV IX only	44597	1300.4
lost to all IX	44597	1300.4

Potential Interfering Stations Included in above Scenario 10

18A WI MILWAUKEE	DTVPLN	DTVP0662	PLN
19A IL PEORIA	DTVPLN	DTVP0678	PLN
19A IN FORT WAYNE	BLCDT	20070509AEQ	LIC
19A WI MADISON	DTVPLN	DTVP0708	PLN
19A MI GRAND RAPIDS	USERRECORD01		APP

Percent new IX = -0.0223%

Result key: 27

Scenario 11 Affected station 5

Before Analysis

Results for: 19A IL CHICAGO DTVPLN DTVP0676 PLN

HAAT 453.0 m, ATV ERP 645.0 kW

	POPULATION	AREA (sq km)
within Noise Limited Contour	9560634	33065.1
not affected by terrain losses	9556156	33025.0
lost to NTSC IX	0	0.0
lost to additional IX by ATV	46722	1380.7
lost to ATV IX only	46722	1380.7
lost to all IX	46722	1380.7

Potential Interfering Stations Included in above Scenario 11

18A WI MILWAUKEE	DTVPLN	DTVP0662	PLN
19A IL PEORIA	DTVPLN	DTVP0678	PLN
19A IN FORT WAYNE	DTVPLN	DTVP0679	PLN
19A WI MADISON	BLCDT	20040823ABP	LIC
19A MI GRAND RAPIDS	DTVPLN	DTVP0685	PLN

After Analysis

Results for: 19A IL CHICAGO DTVPLN DTVP0676 PLN

HAAT 453.0 m, ATV ERP 645.0 kW

	POPULATION	AREA (sq km)
within Noise Limited Contour	9560634	33065.1
not affected by terrain losses	9556156	33025.0
lost to NTSC IX	0	0.0
lost to additional IX by ATV	44597	1300.4

Figure 3

lost to ATV IX only 44597 1300.4
lost to all IX 44597 1300.4

Potential Interfering Stations Included in above Scenario 11

18A WI MILWAUKEE	DTVPLN	DTVP0662	PLN
19A IL PEORIA	DTVPLN	DTVP0678	PLN
19A IN FORT WAYNE	DTVPLN	DTVP0679	PLN
19A WI MADISON	BLCDT	20040823ABP	LIC
19A MI GRAND RAPIDS	USERRECORD01		APP

Percent new IX = -0.0223%

Result key: 28
Scenario 12 Affected station 5
Before Analysis

Results for: 19A IL CHICAGO DTVPLN DTVP0676 PLN
HAAT 453.0 m, ATV ERP 645.0 kW

	POPULATION	AREA (sq km)
within Noise Limited Contour	9560634	33065.1
not affected by terrain losses	9556156	33025.0
lost to NTSC IX	0	0.0
lost to additional IX by ATV	46722	1380.7
lost to ATV IX only	46722	1380.7
lost to all IX	46722	1380.7

Potential Interfering Stations Included in above Scenario 12

18A WI MILWAUKEE	DTVPLN	DTVP0662	PLN
19A IL PEORIA	DTVPLN	DTVP0678	PLN
19A IN FORT WAYNE	DTVPLN	DTVP0679	PLN
19A WI MADISON	DTVPLN	DTVP0708	PLN
19A MI GRAND RAPIDS	DTVPLN	DTVP0685	PLN

After Analysis

Results for: 19A IL CHICAGO DTVPLN DTVP0676 PLN
HAAT 453.0 m, ATV ERP 645.0 kW

	POPULATION	AREA (sq km)
within Noise Limited Contour	9560634	33065.1
not affected by terrain losses	9556156	33025.0
lost to NTSC IX	0	0.0
lost to additional IX by ATV	44597	1300.4
lost to ATV IX only	44597	1300.4
lost to all IX	44597	1300.4

Potential Interfering Stations Included in above Scenario 12

18A WI MILWAUKEE	DTVPLN	DTVP0662	PLN
19A IL PEORIA	DTVPLN	DTVP0678	PLN
19A IN FORT WAYNE	DTVPLN	DTVP0679	PLN
19A WI MADISON	DTVPLN	DTVP0708	PLN
19A MI GRAND RAPIDS	USERRECORD01		APP

Percent new IX = -0.0223%

Figure 3

Result key: 29
Scenario 13 Affected station 5
Before Analysis

Results for: 19A IL CHICAGO DTVPLN DTVP0676 PLN
HAAT 453.0 m, ATV ERP 645.0 kW

	POPULATION	AREA (sq km)
within Noise Limited Contour	9560634	33065.1
not affected by terrain losses	9556156	33025.0
lost to NTSC IX	0	0.0
lost to additional IX by ATV	46126	1364.7
lost to ATV IX only	46126	1364.7
lost to all IX	46126	1364.7

Potential Interfering Stations Included in above Scenario 13

18A WI MILWAUKEE	DTVPLN	DTVP0662	PLN
19A IL PEORIA	BPCDT	20080317AHQ	CP
19A IN FORT WAYNE	BLCDT	20070509AEQ	LIC
19A WI MADISON	BLCDT	20040823ABP	LIC
19A MI GRAND RAPIDS	DTVPLN	DTVP0685	PLN

After Analysis

Results for: 19A IL CHICAGO DTVPLN DTVP0676 PLN
HAAT 453.0 m, ATV ERP 645.0 kW

	POPULATION	AREA (sq km)
within Noise Limited Contour	9560634	33065.1
not affected by terrain losses	9556156	33025.0
lost to NTSC IX	0	0.0
lost to additional IX by ATV	44001	1284.4
lost to ATV IX only	44001	1284.4
lost to all IX	44001	1284.4

Potential Interfering Stations Included in above Scenario 13

18A WI MILWAUKEE	DTVPLN	DTVP0662	PLN
19A IL PEORIA	BPCDT	20080317AHQ	CP
19A IN FORT WAYNE	BLCDT	20070509AEQ	LIC
19A WI MADISON	BLCDT	20040823ABP	LIC
19A MI GRAND RAPIDS	USERRECORD01		APP

Percent new IX = -0.0223%

Result key: 30
Scenario 14 Affected station 5
Before Analysis

Results for: 19A IL CHICAGO DTVPLN DTVP0676 PLN
HAAT 453.0 m, ATV ERP 645.0 kW

	POPULATION	AREA (sq km)
within Noise Limited Contour	9560634	33065.1
not affected by terrain losses	9556156	33025.0
lost to NTSC IX	0	0.0
lost to additional IX by ATV	46126	1364.7
lost to ATV IX only	46126	1364.7
lost to all IX	46126	1364.7

Figure 3

Potential Interfering Stations Included in above Scenario 14

18A WI MILWAUKEE	DTVPLN	DTVP0662	PLN
19A IL PEORIA	BPCDT	20080317AHQ	CP
19A IN FORT WAYNE	BLCDT	20070509AEQ	LIC
19A WI MADISON	DTVPLN	DTVP0708	PLN
19A MI GRAND RAPIDS	DTVPLN	DTVP0685	PLN

After Analysis

Results for: 19A IL CHICAGO DTVPLN DTVP0676 PLN
 HAAT 453.0 m, ATV ERP 645.0 kW

	POPULATION	AREA (sq km)
within Noise Limited Contour	9560634	33065.1
not affected by terrain losses	9556156	33025.0
lost to NTSC IX	0	0.0
lost to additional IX by ATV	44001	1284.4
lost to ATV IX only	44001	1284.4
lost to all IX	44001	1284.4

Potential Interfering Stations Included in above Scenario 14

18A WI MILWAUKEE	DTVPLN	DTVP0662	PLN
19A IL PEORIA	BPCDT	20080317AHQ	CP
19A IN FORT WAYNE	BLCDT	20070509AEQ	LIC
19A WI MADISON	DTVPLN	DTVP0708	PLN
19A MI GRAND RAPIDS	USERRECORD01		APP

Percent new IX = -0.0223%

Result key: 31
 Scenario 15 Affected station 5
 Before Analysis

Results for: 19A IL CHICAGO DTVPLN DTVP0676 PLN
 HAAT 453.0 m, ATV ERP 645.0 kW

	POPULATION	AREA (sq km)
within Noise Limited Contour	9560634	33065.1
not affected by terrain losses	9556156	33025.0
lost to NTSC IX	0	0.0
lost to additional IX by ATV	46126	1364.7
lost to ATV IX only	46126	1364.7
lost to all IX	46126	1364.7

Potential Interfering Stations Included in above Scenario 15

18A WI MILWAUKEE	DTVPLN	DTVP0662	PLN
19A IL PEORIA	BPCDT	20080317AHQ	CP
19A IN FORT WAYNE	DTVPLN	DTVP0679	PLN
19A WI MADISON	BLCDT	20040823ABP	LIC
19A MI GRAND RAPIDS	DTVPLN	DTVP0685	PLN

After Analysis

Results for: 19A IL CHICAGO DTVPLN DTVP0676 PLN
 HAAT 453.0 m, ATV ERP 645.0 kW

Figure 3

	POPULATION	AREA (sq km)
within Noise Limited Contour	9560634	33065.1
not affected by terrain losses	9556156	33025.0
lost to NTSC IX	0	0.0
lost to additional IX by ATV	44001	1284.4
lost to ATV IX only	44001	1284.4
lost to all IX	44001	1284.4

Potential Interfering Stations Included in above Scenario 15

18A WI MILWAUKEE	DTVPLN	DTVP0662	PLN
19A IL PEORIA	BPCDT	20080317AHQ	CP
19A IN FORT WAYNE	DTVPLN	DTVP0679	PLN
19A WI MADISON	BLCDT	20040823ABP	LIC
19A MI GRAND RAPIDS	USERRECORD01		APP

Percent new IX = -0.0223%

Result key: 32
 Scenario 16 Affected station 5
 Before Analysis

Results for: 19A IL CHICAGO DTVPLN DTVP0676 PLN
 HAAT 453.0 m, ATV ERP 645.0 kW

	POPULATION	AREA (sq km)
within Noise Limited Contour	9560634	33065.1
not affected by terrain losses	9556156	33025.0
lost to NTSC IX	0	0.0
lost to additional IX by ATV	46126	1364.7
lost to ATV IX only	46126	1364.7
lost to all IX	46126	1364.7

Potential Interfering Stations Included in above Scenario 16

18A WI MILWAUKEE	DTVPLN	DTVP0662	PLN
19A IL PEORIA	BPCDT	20080317AHQ	CP
19A IN FORT WAYNE	DTVPLN	DTVP0679	PLN
19A WI MADISON	DTVPLN	DTVP0708	PLN
19A MI GRAND RAPIDS	DTVPLN	DTVP0685	PLN

After Analysis

Results for: 19A IL CHICAGO DTVPLN DTVP0676 PLN
 HAAT 453.0 m, ATV ERP 645.0 kW

	POPULATION	AREA (sq km)
within Noise Limited Contour	9560634	33065.1
not affected by terrain losses	9556156	33025.0
lost to NTSC IX	0	0.0
lost to additional IX by ATV	44001	1284.4
lost to ATV IX only	44001	1284.4
lost to all IX	44001	1284.4

Potential Interfering Stations Included in above Scenario 16

18A WI MILWAUKEE	DTVPLN	DTVP0662	PLN
19A IL PEORIA	BPCDT	20080317AHQ	CP
19A IN FORT WAYNE	DTVPLN	DTVP0679	PLN

Figure 3

19A WI MADISON DTVPLN DTVP0708 PLN
 19A MI GRAND RAPIDS USERRECORD01 APP

Percent new IX = -0.0223%

Worst case new IX -0.0223% Scenario 5

#####

Analysis of Interference to Affected Station 6

Analysis of current record

Channel	Call	City/State	Application Ref. No.
19	WHOI	PEORIA IL	DTVPLN -DTVPO678

Stations Potentially Affecting This Station

Chan	Call	City/State	Dist(km)	Status	Application Ref. No.
18	WAND	DECATUR IL	100.9	LIC	BLCDDT -20020509AAX
18	WAND	DECATUR IL	100.9	PLN	DTVPLN -DTVPO639
19	WGN-TV	CHICAGO IL	212.4	LIC	BLCDDT -20040316ACQ
19	WGN-TV	CHICAGO IL	212.4	PLN	DTVPLN -DTVPO676
19	WUSI-TV	OLNEY IL	237.0	LIC	BLEDTT -20060619ABG
19	WUSI-TV	OLNEY IL	237.0	PLN	DTVPLN -DTVPO677
19	WISE-TV	FORT WAYNE IN	373.9	LIC	BLCDDT -20070509AEQ
19	WISE-TV	FORT WAYNE IN	373.9	PLN	DTVPLN -DTVPO679
19	WXMI	GRAND RAPIDS MI	405.5	PLN	DTVPLN -DTVPO685
19	WMTV	MADISON WI	266.6	LIC	BLCDDT -20040823ABP
19	WMTV	MADISON WI	266.6	PLN	DTVPLN -DTVPO708
19	WXMI	GRAND RAPIDS MI	405.5	APP	USERRECORD-01

Proposal causes no interference

#####

Analysis of Interference to Affected Station 7

Analysis of current record

Channel	Call	City/State	Application Ref. No.
19	WHOI	PEORIA IL	BPCDDT -20080317AHQ

Stations Potentially Affecting This Station

Chan	Call	City/State	Dist(km)	Status	Application Ref. No.
18	WAND	DECATUR IL	100.9	LIC	BLCDDT -20020509AAX
18	WAND	DECATUR IL	100.9	PLN	DTVPLN -DTVPO639
19	WGN-TV	CHICAGO IL	212.4	LIC	BLCDDT -20040316ACQ
19	WGN-TV	CHICAGO IL	212.4	PLN	DTVPLN -DTVPO676
19	WUSI-TV	OLNEY IL	237.0	LIC	BLEDTT -20060619ABG
19	WUSI-TV	OLNEY IL	237.0	PLN	DTVPLN -DTVPO677
19	WISE-TV	FORT WAYNE IN	373.9	LIC	BLCDDT -20070509AEQ
19	WISE-TV	FORT WAYNE IN	373.9	PLN	DTVPLN -DTVPO679
19	WXMI	GRAND RAPIDS MI	405.5	PLN	DTVPLN -DTVPO685
19	WMTV	MADISON WI	266.6	LIC	BLCDDT -20040823ABP

Figure 3

19 WMTV MADISON WI 266.6 PLN DTVPLN -DTVPO708
 19 WXMI GRAND RAPIDS MI 405.5 APP USERRECORD-01
 Proposal causes no interference

#####

Analysis of Interference to Affected Station 8

Analysis of current record

Channel	Call	City/State	Application Ref. No.
19	WISE-TV	FORT WAYNE IN	BLCDDT -20070509AEQ

Stations Potentially Affecting This Station

Chan	Call	City/State	Dist(km)	Status	Application Ref. No.
19	WGN-TV	CHICAGO IL	222.6	LIC	BLCDDT -20040316ACQ
19	WGN-TV	CHICAGO IL	222.6	PLN	DTVPLN -DTVPO676
19	WUSI-TV	OLNEY IL	355.1	LIC	BLEDTT -20060619ABG
19	WUSI-TV	OLNEY IL	355.1	PLN	DTVPLN -DTVPO677
19	WHOI	PEORIA IL	373.9	PLN	DTVPLN -DTVPO678
19	WHOI	PEORIA IL	373.9	CP	BPCDDT -20080317AHQ
19	WBKI-TV	CAMPBELLSVILLE KY	396.7	CP	BPCDDT -19991101AKV
19	WBKI-TV	CAMPBELLSVILLE KY	396.7	PLN	DTVPLN -DTVPO682
19	WXMI	GRAND RAPIDS MI	179.5	PLN	DTVPLN -DTVPO685
19	WMTV	MADISON WI	416.8	LIC	BLCDDT -20040823ABP
19	WMTV	MADISON WI	416.8	PLN	DTVPLN -DTVPO708
19	WVAH-TV	CHARLESTON WV	409.1	CP MOD	BMPCCDT -20040406AAX
19	WVAH-TV	CHARLESTON WV	409.1	PLN	DTVPLN -DTVPO710
20	WOTV	BATTLE CREEK MI	165.9	LIC	BLCDDT -20030721AHS
20	WOTV	BATTLE CREEK MI	165.9	PLN	DTVPLN -DTVPO728
19	WXMI	GRAND RAPIDS MI	179.5	APP	USERRECORD-01

Total scenarios = 2

Result key: 33
 Scenario 1 Affected station 8
 Before Analysis

Results for: 19A IN FORT WAYNE BLCDDT 20070509AEQ LIC
 HAAT 239.0 m, ATV ERP 285.0 kW

	POPULATION	AREA (sq km)
within Noise Limited Contour	1056386	20664.6
not affected by terrain losses	1056386	20664.6
lost to NTSC IX	0	0.0
lost to additional IX by ATV	25729	694.8
lost to ATV IX only	25729	694.8
lost to all IX	25729	694.8

Potential Interfering Stations Included in above Scenario 1

19A IL CHICAGO	BLCDDT	20040316ACQ	LIC
19A MI GRAND RAPIDS	DTVPLN	DTVPO685	PLN

After Analysis

Figure 3

Results for: 19A IN FORT WAYNE BLCDT 20070509AEQ LIC
HAAT 239.0 m, ATV ERP 285.0 kW

	POPULATION	AREA (sq km)
within Noise Limited Contour	1056386	20664.6
not affected by terrain losses	1056386	20664.6
lost to NTSC IX	0	0.0
lost to additional IX by ATV	30880	903.7
lost to ATV IX only	30880	903.7
lost to all IX	30880	903.7

Potential Interfering Stations Included in above Scenario 1

19A IL CHICAGO BLCDT 20040316ACQ LIC
19A MI GRAND RAPIDS USERRECORD01 APP

Percent new IX = 0.4998%

Result key: 34
Scenario 2 Affected station 8
Before Analysis

Results for: 19A IN FORT WAYNE BLCDT 20070509AEQ LIC
HAAT 239.0 m, ATV ERP 285.0 kW

	POPULATION	AREA (sq km)
within Noise Limited Contour	1056386	20664.6
not affected by terrain losses	1056386	20664.6
lost to NTSC IX	0	0.0
lost to additional IX by ATV	25729	694.8
lost to ATV IX only	25729	694.8
lost to all IX	25729	694.8

Potential Interfering Stations Included in above Scenario 2

19A IL CHICAGO DTVPLN DTVP0676 PLN
19A MI GRAND RAPIDS DTVPLN DTVP0685 PLN

After Analysis

Results for: 19A IN FORT WAYNE BLCDT 20070509AEQ LIC
HAAT 239.0 m, ATV ERP 285.0 kW

	POPULATION	AREA (sq km)
within Noise Limited Contour	1056386	20664.6
not affected by terrain losses	1056386	20664.6
lost to NTSC IX	0	0.0
lost to additional IX by ATV	30880	903.7
lost to ATV IX only	30880	903.7
lost to all IX	30880	903.7

Potential Interfering Stations Included in above Scenario 2

19A IL CHICAGO DTVPLN DTVP0676 PLN
19A MI GRAND RAPIDS DTVPLN DTVP0685 PLN

Percent new IX = 0.4998%

Worst case new IX 0.4998% Scenario 1

Figure 3

#####

Analysis of Interference to Affected Station 9

Analysis of current record

Channel	Call	City/State	Application	Ref. No.
19	WISE-TV	FORT WAYNE IN	DTVPLN	-DTV0679

Stations Potentially Affecting This Station

Chan	Call	City/State	Dist(km)	Status	Application	Ref. No.
19	WGN-TV	CHICAGO IL	222.6	LIC	BLCDT	-20040316ACQ
19	WGN-TV	CHICAGO IL	222.6	PLN	DTVPLN	-DTV0676
19	WUSI-TV	OLNEY IL	355.1	LIC	BLEDT	-20060619ABG
19	WUSI-TV	OLNEY IL	355.1	PLN	DTVPLN	-DTV0677
19	WHOI	PEORIA IL	373.9	PLN	DTVPLN	-DTV0678
19	WHOI	PEORIA IL	373.9	CP	BPCDT	-20080317AHQ
19	WBKI-TV	CAMPBELLSVILLE KY	396.7	CP	BPCDT	-19991101AKV
19	WBKI-TV	CAMPBELLSVILLE KY	396.7	PLN	DTVPLN	-DTV0682
19	WXMI	GRAND RAPIDS MI	179.6	PLN	DTVPLN	-DTV0685
19	WMTV	MADISON WI	416.8	LIC	BLCDT	-20040823ABP
19	WMTV	MADISON WI	416.8	PLN	DTVPLN	-DTV0708
19	WVAH-TV	CHARLESTON WV	409.0	CP MOD	BMPCDT	-20040406AAX
19	WVAH-TV	CHARLESTON WV	409.0	PLN	DTVPLN	-DTV0710
20	WOTV	BATTLE CREEK MI	165.9	LIC	BLCDT	-20030721AHS
20	WOTV	BATTLE CREEK MI	165.9	PLN	DTVPLN	-DTV0728
19	WXMI	GRAND RAPIDS MI	179.6	APP	USERRECORD-01	

Total scenarios = 2

Result key: 35
Scenario 1 Affected station 9
Before Analysis

Results for: 19A IN FORT WAYNE DTVPLN DTVP0679 PLN
HAAT 239.0 m, ATV ERP 285.0 kW

	POPULATION	AREA (sq km)
within Noise Limited Contour	1056386	20664.6
not affected by terrain losses	1056386	20664.6
lost to NTSC IX	0	0.0
lost to additional IX by ATV	25729	694.8
lost to ATV IX only	25729	694.8
lost to all IX	25729	694.8

Potential Interfering Stations Included in above Scenario 1

19A IL CHICAGO BLCDT 20040316ACQ LIC
19A MI GRAND RAPIDS DTVPLN DTVP0685 PLN

After Analysis

Results for: 19A IN FORT WAYNE DTVPLN DTVP0679 PLN
HAAT 239.0 m, ATV ERP 285.0 kW

Figure 3

	POPULATION	AREA (sq km)	
within Noise Limited Contour	1056386	20664.6	
not affected by terrain losses	1056386	20664.6	
lost to NTSC IX	0	0.0	
lost to additional IX by ATV	30880	903.7	
lost to ATV IX only	30880	903.7	
lost to all IX	30880	903.7	
Potential Interfering Stations Included in above Scenario	1		
19A IL CHICAGO	BLCDT	20040316ACQ	LIC
19A MI GRAND RAPIDS	USERRECORD01		APP
Percent new IX =	0.4998%		
Result key:	36		
Scenario	2	Affected station	9
Before Analysis			
Results for: 19A IN FORT WAYNE	DTVPLN	DTVP0679	PLN
HAAT 239.0 m, ATV ERP 285.0 kW			
	POPULATION	AREA (sq km)	
within Noise Limited Contour	1056386	20664.6	
not affected by terrain losses	1056386	20664.6	
lost to NTSC IX	0	0.0	
lost to additional IX by ATV	25729	694.8	
lost to ATV IX only	25729	694.8	
lost to all IX	25729	694.8	
Potential Interfering Stations Included in above Scenario	2		
19A IL CHICAGO	DTVPLN	DTVP0676	PLN
19A MI GRAND RAPIDS	DTVPLN	DTVP0685	PLN
After Analysis			
Results for: 19A IN FORT WAYNE	DTVPLN	DTVP0679	PLN
HAAT 239.0 m, ATV ERP 285.0 kW			
	POPULATION	AREA (sq km)	
within Noise Limited Contour	1056386	20664.6	
not affected by terrain losses	1056386	20664.6	
lost to NTSC IX	0	0.0	
lost to additional IX by ATV	30880	903.7	
lost to ATV IX only	30880	903.7	
lost to all IX	30880	903.7	
Potential Interfering Stations Included in above Scenario	2		
19A IL CHICAGO	DTVPLN	DTVP0676	PLN
19A MI GRAND RAPIDS	USERRECORD01		APP
Percent new IX =	0.4998%		
Worst case new IX	0.4998%	Scenario	1

#####

Figure 3

Analysis of Interference to Affected Station 10				
Analysis of current record				
Channel	Call	City/State	Application Ref. No.	
19	WCLL-CA	COLUMBUS OH	BLTTL	-19990802JG
Stations Potentially Affecting This Station				
Chan	Call	City/State	Dist(km)	Status Application Ref. No.
16	WPTD	DAYTON OH	109.8	PLN DTVPLN -DTVP0578
16	WPTD	DAYTON OH	109.8	CP BPEDT -20080312ADM
17	WQCW	PORTSMOUTH OH	133.5	LIC BLCDT -20060630AFJ
17	WQCW	PORTSMOUTH OH	133.5	PLN DTVPLN -DTVP0613
18	WHIZ-TV	ZANESVILLE OH	86.7	LIC BMLCT -20030715ACX
18	WHIZ-TV	ZANESVILLE OH	86.8	APP BSTA -20060616AAU
19	WISE-TV	FORT WAYNE IN	222.6	LIC BLCDT -20070509AEQ
19	WISE-TV	FORT WAYNE IN	222.6	PLN DTVPLN -DTVP0679
19	WBKI-TV	CAMPBELLSVILLE KY	343.3	CP BPCDT -19991101AKV
19	WBKI-TV	CAMPBELLSVILLE KY	343.3	PLN DTVPLN -DTVP0682
19	WXIX-TV	NEWPORT KY	162.1	LIC BLCT -19851107KH
19	WXMI	GRAND RAPIDS MI	369.2	PLN DTVPLN -DTVP0685
19	WXMI	GRAND RAPIDS MI	369.2	LIC BLCDT -20030117ABD
19	WOIO	SHAKER HEIGHTS OH	193.0	LIC BLCT -20041112ACR
19	WPCW	JEANNETTE PA	330.3	LIC BLCT -20030512ABA
19	WVAH-TV	CHARLESTON WV	197.0	CP MOD BMLCT -20040406AAX
19	WVAH-TV	CHARLESTON WV	197.0	PLN DTVPLN -DTVP0710
20	WOUB-TV	ATHENS OH	102.5	LIC BMLCT -20020807ACG
21	WBNS-TV	COLUMBUS OH	2.4	LIC BLCDT -20021025ABK
21	WBNS-TV	COLUMBUS OH	2.4	PLN DTVPLN -DTVP0776
26	WBDT	SPRINGFIELD OH	110.1	PLN DTVPLN -DTVP0971
27	WOUB-TV	ATHENS OH	102.5	LIC BLEDT -20030411ABC
27	WOUB-TV	ATHENS OH	102.5	PLN DTVPLN -DTVP1013
34	WOSU-TV	COLUMBUS OH	22.9	LIC BMLCT -19851106KE
19	WXMI	GRAND RAPIDS MI	369.2	APP USERRECORD-01
Proposal causes no interference				
#####				
Analysis of Interference to Affected Station 11				
Analysis of current record				
Channel	Call	City/State	Application Ref. No.	
19	WMTV	MADISON WI	BLCDT	-20040823ABP
Stations Potentially Affecting This Station				
Chan	Call	City/State	Dist(km)	Status Application Ref. No.
18	WVTV	MILWAUKEE WI	128.6	CP BPCDT -20080317AGE
18	WVTV	MILWAUKEE WI	128.6	PLN DTVPLN -DTVP0662
19	WGN-TV	CHICAGO IL	200.0	LIC BLCDT -20040316ACQ
19	WGN-TV	CHICAGO IL	200.0	PLN DTVPLN -DTVP0676
19	WHOI	PEORIA IL	266.6	PLN DTVPLN -DTVP0678
19	WHOI	PEORIA IL	266.6	CP BPCDT -20080317AHQ

Figure 3

19	WISE-TV	FORT WAYNE IN	416.8	LIC	BLCDT	-20070509AEQ
19	WISE-TV	FORT WAYNE IN	416.8	PLN	DTVPLN	-DTVP0679
19	WXMI	GRAND RAPIDS MI	324.6	PLN	DTVPLN	-DTVP0685
19	WMQF	MARQUETTE MI	421.4	PLN	DTVPLN	-DTVP0686
20	WHA-TV	MADISON WI	3.9	LIC	BLEDT	-20020503AAF
20	WHA-TV	MADISON WI	3.9	PLN	DTVPLN	-DTVP0748
19	WXMI	GRAND RAPIDS MI	324.6	APP	USERRECORD-01	

Total scenarios = 8

Result key: 37
 Scenario 1 Affected station 11
 Before Analysis

Results for: 19A WI MADISON	BLCDT	20040823ABP	LIC
HAAT 387.0 m, ATV ERP 56.0 kW			
	POPULATION	AREA (sq km)	
within Noise Limited Contour	1071361	22699.7	
not affected by terrain losses	1067516	22506.3	
lost to NTSC IX	0	0.0	
lost to additional IX by ATV	41498	1309.4	
lost to ATV IX only	41498	1309.4	
lost to all IX	41498	1309.4	

Potential Interfering Stations Included in above Scenario 1

18A WI MILWAUKEE	BPCDT	20080317AGE	CP
19A IL CHICAGO	BLCDT	20040316ACQ	LIC
19A IL PEORIA	DTVPLN	DTVP0678	PLN
20A WI MADISON	BLEDT	20020503AAF	LIC
19A MI GRAND RAPIDS	DTVPLN	DTVP0685	PLN

After Analysis

Results for: 19A WI MADISON	BLCDT	20040823ABP	LIC
HAAT 387.0 m, ATV ERP 56.0 kW			
	POPULATION	AREA (sq km)	
within Noise Limited Contour	1071361	22699.7	
not affected by terrain losses	1067516	22506.3	
lost to NTSC IX	0	0.0	
lost to additional IX by ATV	41498	1309.4	
lost to ATV IX only	41498	1309.4	
lost to all IX	41498	1309.4	

Potential Interfering Stations Included in above Scenario 1

18A WI MILWAUKEE	BPCDT	20080317AGE	CP
19A IL CHICAGO	BLCDT	20040316ACQ	LIC
19A IL PEORIA	DTVPLN	DTVP0678	PLN
20A WI MADISON	BLEDT	20020503AAF	LIC
19A MI GRAND RAPIDS	USERRECORD01		APP

Percent new IX = 0.0000%

Result key: 38
 Scenario 2 Affected station 11

Figure 3

Before Analysis

Results for: 19A WI MADISON	BLCDT	20040823ABP	LIC
HAAT 387.0 m, ATV ERP 56.0 kW			
	POPULATION	AREA (sq km)	
within Noise Limited Contour	1071361	22699.7	
not affected by terrain losses	1067516	22506.3	
lost to NTSC IX	0	0.0	
lost to additional IX by ATV	41498	1309.4	
lost to ATV IX only	41498	1309.4	
lost to all IX	41498	1309.4	

Potential Interfering Stations Included in above Scenario 2

18A WI MILWAUKEE	BPCDT	20080317AGE	CP
19A IL CHICAGO	BLCDT	20040316ACQ	LIC
19A IL PEORIA	DTVPLN	DTVP0678	PLN
20A WI MADISON	DTVPLN	DTVP0748	PLN
19A MI GRAND RAPIDS	DTVPLN	DTVP0685	PLN

After Analysis

Results for: 19A WI MADISON	BLCDT	20040823ABP	LIC
HAAT 387.0 m, ATV ERP 56.0 kW			
	POPULATION	AREA (sq km)	
within Noise Limited Contour	1071361	22699.7	
not affected by terrain losses	1067516	22506.3	
lost to NTSC IX	0	0.0	
lost to additional IX by ATV	41498	1309.4	
lost to ATV IX only	41498	1309.4	
lost to all IX	41498	1309.4	

Potential Interfering Stations Included in above Scenario 2

18A WI MILWAUKEE	BPCDT	20080317AGE	CP
19A IL CHICAGO	BLCDT	20040316ACQ	LIC
19A IL PEORIA	DTVPLN	DTVP0678	PLN
20A WI MADISON	DTVPLN	DTVP0748	PLN
19A MI GRAND RAPIDS	USERRECORD01		APP

Percent new IX = 0.0000%

Result key: 39
 Scenario 3 Affected station 11
 Before Analysis

Results for: 19A WI MADISON	BLCDT	20040823ABP	LIC
HAAT 387.0 m, ATV ERP 56.0 kW			
	POPULATION	AREA (sq km)	
within Noise Limited Contour	1071361	22699.7	
not affected by terrain losses	1067516	22506.3	
lost to NTSC IX	0	0.0	
lost to additional IX by ATV	41498	1309.4	
lost to ATV IX only	41498	1309.4	
lost to all IX	41498	1309.4	

Potential Interfering Stations Included in above Scenario 3

Figure 3

18A WI MILWAUKEE	BPCDT	20080317AGE	CP
19A IL CHICAGO	DTVPLN	DTVP0676	PLN
19A IL PEORIA	DTVPLN	DTVP0678	PLN
20A WI MADISON	BLEDT	20020503AAF	LIC
19A MI GRAND RAPIDS	DTVPLN	DTVP0685	PLN

After Analysis

Results for: 19A WI MADISON	BLCDDT	20040823ABP	LIC
HAAT 387.0 m, ATV ERP 56.0 kW			
	POPULATION	AREA (sq km)	
within Noise Limited Contour	1071361	22699.7	
not affected by terrain losses	1067516	22506.3	
lost to NTSC IX	0	0.0	
lost to additional IX by ATV	41498	1309.4	
lost to ATV IX only	41498	1309.4	
lost to all IX	41498	1309.4	

Potential Interfering Stations Included in above Scenario 3

18A WI MILWAUKEE	BPCDT	20080317AGE	CP
19A IL CHICAGO	DTVPLN	DTVP0676	PLN
19A IL PEORIA	DTVPLN	DTVP0678	PLN
20A WI MADISON	BLEDT	20020503AAF	LIC
19A MI GRAND RAPIDS	USERRECORD01		APP

Percent new IX = 0.0000%

Result key: 40
 Scenario 4 Affected station 11
 Before Analysis

Results for: 19A WI MADISON	BLCDDT	20040823ABP	LIC
HAAT 387.0 m, ATV ERP 56.0 kW			
	POPULATION	AREA (sq km)	
within Noise Limited Contour	1071361	22699.7	
not affected by terrain losses	1067516	22506.3	
lost to NTSC IX	0	0.0	
lost to additional IX by ATV	41498	1309.4	
lost to ATV IX only	41498	1309.4	
lost to all IX	41498	1309.4	

Potential Interfering Stations Included in above Scenario 4

18A WI MILWAUKEE	BPCDT	20080317AGE	CP
19A IL CHICAGO	DTVPLN	DTVP0676	PLN
19A IL PEORIA	DTVPLN	DTVP0678	PLN
20A WI MADISON	DTVPLN	DTVP0748	PLN
19A MI GRAND RAPIDS	DTVPLN	DTVP0685	PLN

After Analysis

Results for: 19A WI MADISON	BLCDDT	20040823ABP	LIC
HAAT 387.0 m, ATV ERP 56.0 kW			
	POPULATION	AREA (sq km)	
within Noise Limited Contour	1071361	22699.7	

Figure 3

not affected by terrain losses	1067516	22506.3
lost to NTSC IX	0	0.0
lost to additional IX by ATV	41498	1309.4
lost to ATV IX only	41498	1309.4
lost to all IX	41498	1309.4

Potential Interfering Stations Included in above Scenario 4

18A WI MILWAUKEE	BPCDT	20080317AGE	CP
19A IL CHICAGO	DTVPLN	DTVP0676	PLN
19A IL PEORIA	DTVPLN	DTVP0678	PLN
20A WI MADISON	DTVPLN	DTVP0748	PLN
19A MI GRAND RAPIDS	USERRECORD01		APP

Percent new IX = 0.0000%

Result key: 41
 Scenario 5 Affected station 11
 Before Analysis

Results for: 19A WI MADISON	BLCDDT	20040823ABP	LIC
HAAT 387.0 m, ATV ERP 56.0 kW			
	POPULATION	AREA (sq km)	
within Noise Limited Contour	1071361	22699.7	
not affected by terrain losses	1067516	22506.3	
lost to NTSC IX	0	0.0	
lost to additional IX by ATV	41498	1309.4	
lost to ATV IX only	41498	1309.4	
lost to all IX	41498	1309.4	

Potential Interfering Stations Included in above Scenario 5

18A WI MILWAUKEE	DTVPLN	DTVP0662	PLN
19A IL CHICAGO	BLCDDT	20040316ACQ	LIC
19A IL PEORIA	DTVPLN	DTVP0678	PLN
20A WI MADISON	BLEDT	20020503AAF	LIC
19A MI GRAND RAPIDS	DTVPLN	DTVP0685	PLN

After Analysis

Results for: 19A WI MADISON	BLCDDT	20040823ABP	LIC
HAAT 387.0 m, ATV ERP 56.0 kW			
	POPULATION	AREA (sq km)	
within Noise Limited Contour	1071361	22699.7	
not affected by terrain losses	1067516	22506.3	
lost to NTSC IX	0	0.0	
lost to additional IX by ATV	41498	1309.4	
lost to ATV IX only	41498	1309.4	
lost to all IX	41498	1309.4	

Potential Interfering Stations Included in above Scenario 5

18A WI MILWAUKEE	DTVPLN	DTVP0662	PLN
19A IL CHICAGO	BLCDDT	20040316ACQ	LIC
19A IL PEORIA	DTVPLN	DTVP0678	PLN
20A WI MADISON	BLEDT	20020503AAF	LIC
19A MI GRAND RAPIDS	USERRECORD01		APP

Figure 3

Percent new IX = 0.0000%

Result key: 42
Scenario 6 Affected station 11
Before Analysis

Results for: 19A WI MADISON BLCDT 20040823ABP LIC
HAAT 387.0 m, ATV ERP 56.0 kW

	POPULATION	AREA (sq km)
within Noise Limited Contour	1071361	22699.7
not affected by terrain losses	1067516	22506.3
lost to NTSC IX	0	0.0
lost to additional IX by ATV	41498	1309.4
lost to ATV IX only	41498	1309.4
lost to all IX	41498	1309.4

Potential Interfering Stations Included in above Scenario 6

18A WI MILWAUKEE	DTVPLN	DTVP0662	PLN
19A IL CHICAGO	BLCDT	20040316ACQ	LIC
19A IL PEORIA	DTVPLN	DTVP0678	PLN
20A WI MADISON	DTVPLN	DTVP0748	PLN
19A MI GRAND RAPIDS	DTVPLN	DTVP0685	PLN

After Analysis

Results for: 19A WI MADISON BLCDT 20040823ABP LIC
HAAT 387.0 m, ATV ERP 56.0 kW

	POPULATION	AREA (sq km)
within Noise Limited Contour	1071361	22699.7
not affected by terrain losses	1067516	22506.3
lost to NTSC IX	0	0.0
lost to additional IX by ATV	41498	1309.4
lost to ATV IX only	41498	1309.4
lost to all IX	41498	1309.4

Potential Interfering Stations Included in above Scenario 6

18A WI MILWAUKEE	DTVPLN	DTVP0662	PLN
19A IL CHICAGO	BLCDT	20040316ACQ	LIC
19A IL PEORIA	DTVPLN	DTVP0678	PLN
20A WI MADISON	DTVPLN	DTVP0748	PLN
19A MI GRAND RAPIDS	USERRECORD01		APP

Percent new IX = 0.0000%

Result key: 43
Scenario 7 Affected station 11
Before Analysis

Results for: 19A WI MADISON BLCDT 20040823ABP LIC
HAAT 387.0 m, ATV ERP 56.0 kW

	POPULATION	AREA (sq km)
within Noise Limited Contour	1071361	22699.7
not affected by terrain losses	1067516	22506.3
lost to NTSC IX	0	0.0

Figure 3

lost to additional IX by ATV 41498 1309.4
lost to ATV IX only 41498 1309.4
lost to all IX 41498 1309.4

Potential Interfering Stations Included in above Scenario 7

18A WI MILWAUKEE	DTVPLN	DTVP0662	PLN
19A IL CHICAGO	DTVPLN	DTVP0676	PLN
19A IL PEORIA	DTVPLN	DTVP0678	PLN
20A WI MADISON	BLEDT	20020503AAF	LIC
19A MI GRAND RAPIDS	DTVPLN	DTVP0685	PLN

After Analysis

Results for: 19A WI MADISON BLCDT 20040823ABP LIC
HAAT 387.0 m, ATV ERP 56.0 kW

	POPULATION	AREA (sq km)
within Noise Limited Contour	1071361	22699.7
not affected by terrain losses	1067516	22506.3
lost to NTSC IX	0	0.0
lost to additional IX by ATV	41498	1309.4
lost to ATV IX only	41498	1309.4
lost to all IX	41498	1309.4

Potential Interfering Stations Included in above Scenario 7

18A WI MILWAUKEE	DTVPLN	DTVP0662	PLN
19A IL CHICAGO	DTVPLN	DTVP0676	PLN
19A IL PEORIA	DTVPLN	DTVP0678	PLN
20A WI MADISON	BLEDT	20020503AAF	LIC
19A MI GRAND RAPIDS	USERRECORD01		APP

Percent new IX = 0.0000%

Result key: 44
Scenario 8 Affected station 11
Before Analysis

Results for: 19A WI MADISON BLCDT 20040823ABP LIC
HAAT 387.0 m, ATV ERP 56.0 kW

	POPULATION	AREA (sq km)
within Noise Limited Contour	1071361	22699.7
not affected by terrain losses	1067516	22506.3
lost to NTSC IX	0	0.0
lost to additional IX by ATV	41498	1309.4
lost to ATV IX only	41498	1309.4
lost to all IX	41498	1309.4

Potential Interfering Stations Included in above Scenario 8

18A WI MILWAUKEE	DTVPLN	DTVP0662	PLN
19A IL CHICAGO	DTVPLN	DTVP0676	PLN
19A IL PEORIA	DTVPLN	DTVP0678	PLN
20A WI MADISON	DTVPLN	DTVP0748	PLN
19A MI GRAND RAPIDS	DTVPLN	DTVP0685	PLN

After Analysis

Figure 3

Results for: 19A WI MADISON BLCDT 20040823ABP LIC

HAAT 387.0 m, ATV ERP 56.0 kW	POPULATION	AREA (sq km)
within Noise Limited Contour	1071361	22699.7
not affected by terrain losses	1067516	22506.3
lost to NTSC IX	0	0.0
lost to additional IX by ATV	41498	1309.4
lost to ATV IX only	41498	1309.4
lost to all IX	41498	1309.4

Potential Interfering Stations Included in above Scenario 8

18A WI MILWAUKEE	DTVPLN	DTVP0662	PLN
19A IL CHICAGO	DTVPLN	DTVP0676	PLN
19A IL PEORIA	DTVPLN	DTVP0678	PLN
20A WI MADISON	DTVPLN	DTVP0748	PLN
19A MI GRAND RAPIDS	USERRECORD01	APP	

Percent new IX = 0.0000%

Worst case new IX 0.0000% Scenario 1

#####

Analysis of Interference to Affected Station 12

Analysis of current record

Channel	Call	City/State	Application Ref. No.
19	WMTV	MADISON WI	DTVPLN -DTVP0708

Stations Potentially Affecting This Station

Chan	Call	City/State	Dist(km)	Status	Application Ref. No.
18	WVTV	MILWAUKEE WI	128.6	CP	BPCDT -20080317AGE
18	WVTV	MILWAUKEE WI	128.6	PLN	DTVPLN -DTVP0662
19	WGN-TV	CHICAGO IL	200.0	LIC	BLCDT -20040316ACQ
19	WGN-TV	CHICAGO IL	200.0	PLN	DTVPLN -DTVP0676
19	WHOI	PEORIA IL	266.6	PLN	DTVPLN -DTVP0678
19	WHOI	PEORIA IL	266.6	CP	BPCDT -20080317AHQ
19	WISE-TV	FORT WAYNE IN	416.8	LIC	BLCDT -20070509AEQ
19	WISE-TV	FORT WAYNE IN	416.8	PLN	DTVPLN -DTVP0679
19	WXMI	GRAND RAPIDS MI	324.6	PLN	DTVPLN -DTVP0685
19	WMQF	MARQUETTE MI	421.4	PLN	DTVPLN -DTVP0686
20	WHA-TV	MADISON WI	3.9	LIC	BLEDT -20020503AAF
20	WHA-TV	MADISON WI	3.9	PLN	DTVPLN -DTVP0748
19	WXMI	GRAND RAPIDS MI	324.6	APP	USERRECORD-01

Total scenarios = 8

Result key: 45

Scenario 1 Affected station 12

Before Analysis

Figure 3

Results for: 19A WI MADISON DTVPLN DTVP0708 PLN

HAAT 387.0 m, ATV ERP 56.0 kW	POPULATION	AREA (sq km)
within Noise Limited Contour	1071361	22699.7
not affected by terrain losses	1067516	22506.3
lost to NTSC IX	0	0.0
lost to additional IX by ATV	41498	1309.4
lost to ATV IX only	41498	1309.4
lost to all IX	41498	1309.4

Potential Interfering Stations Included in above Scenario 1

18A WI MILWAUKEE	BPCDT	20080317AGE	CP
19A IL CHICAGO	BLCDT	20040316ACQ	LIC
19A IL PEORIA	DTVPLN	DTVP0678	PLN
20A WI MADISON	BLEDT	20020503AAF	LIC
19A MI GRAND RAPIDS	DTVPLN	DTVP0685	PLN

After Analysis

Results for: 19A WI MADISON DTVPLN DTVP0708 PLN

HAAT 387.0 m, ATV ERP 56.0 kW	POPULATION	AREA (sq km)
within Noise Limited Contour	1071361	22699.7
not affected by terrain losses	1067516	22506.3
lost to NTSC IX	0	0.0
lost to additional IX by ATV	41498	1309.4
lost to ATV IX only	41498	1309.4
lost to all IX	41498	1309.4

Potential Interfering Stations Included in above Scenario 1

18A WI MILWAUKEE	BPCDT	20080317AGE	CP
19A IL CHICAGO	BLCDT	20040316ACQ	LIC
19A IL PEORIA	DTVPLN	DTVP0678	PLN
20A WI MADISON	BLEDT	20020503AAF	LIC
19A MI GRAND RAPIDS	USERRECORD01	APP	

Percent new IX = 0.0000%

Result key: 46

Scenario 2 Affected station 12

Before Analysis

Results for: 19A WI MADISON DTVPLN DTVP0708 PLN

HAAT 387.0 m, ATV ERP 56.0 kW	POPULATION	AREA (sq km)
within Noise Limited Contour	1071361	22699.7
not affected by terrain losses	1067516	22506.3
lost to NTSC IX	0	0.0
lost to additional IX by ATV	41498	1309.4
lost to ATV IX only	41498	1309.4
lost to all IX	41498	1309.4

Potential Interfering Stations Included in above Scenario 2

18A WI MILWAUKEE	BPCDT	20080317AGE	CP
------------------	-------	-------------	----

Figure 3

19A IL CHICAGO	BLCDT	20040316ACQ	LIC
19A IL PEORIA	DTVPLN	DTVP0678	PLN
20A WI MADISON	DTVPLN	DTVP0748	PLN
19A MI GRAND RAPIDS	DTVPLN	DTVP0685	PLN

After Analysis

Results for: 19A WI MADISON	DTVPLN	DTVP0708	PLN
HAAT 387.0 m, ATV ERP 56.0 kW			
	POPULATION	AREA (sq km)	
within Noise Limited Contour	1071361	22699.7	
not affected by terrain losses	1067516	22506.3	
lost to NTSC IX	0	0.0	
lost to additional IX by ATV	41498	1309.4	
lost to ATV IX only	41498	1309.4	
lost to all IX	41498	1309.4	

Potential Interfering Stations Included in above Scenario 2

18A WI MILWAUKEE	BPCDT	20080317AGE	CP
19A IL CHICAGO	BLCDT	20040316ACQ	LIC
19A IL PEORIA	DTVPLN	DTVP0678	PLN
20A WI MADISON	DTVPLN	DTVP0748	PLN
19A MI GRAND RAPIDS	USERRECORD01		APP

Percent new IX = 0.0000%

Result key: 47

Scenario 3 Affected station 12

Before Analysis

Results for: 19A WI MADISON	DTVPLN	DTVP0708	PLN
HAAT 387.0 m, ATV ERP 56.0 kW			
	POPULATION	AREA (sq km)	
within Noise Limited Contour	1071361	22699.7	
not affected by terrain losses	1067516	22506.3	
lost to NTSC IX	0	0.0	
lost to additional IX by ATV	41498	1309.4	
lost to ATV IX only	41498	1309.4	
lost to all IX	41498	1309.4	

Potential Interfering Stations Included in above Scenario 3

18A WI MILWAUKEE	BPCDT	20080317AGE	CP
19A IL CHICAGO	DTVPLN	DTVP0676	PLN
19A IL PEORIA	DTVPLN	DTVP0678	PLN
20A WI MADISON	BLEDT	20020503AAF	LIC
19A MI GRAND RAPIDS	DTVPLN	DTVP0685	PLN

After Analysis

Results for: 19A WI MADISON	DTVPLN	DTVP0708	PLN
HAAT 387.0 m, ATV ERP 56.0 kW			
	POPULATION	AREA (sq km)	
within Noise Limited Contour	1071361	22699.7	
not affected by terrain losses	1067516	22506.3	
lost to NTSC IX	0	0.0	

Figure 3

lost to additional IX by ATV	41498	1309.4
lost to ATV IX only	41498	1309.4
lost to all IX	41498	1309.4

Potential Interfering Stations Included in above Scenario 3

18A WI MILWAUKEE	BPCDT	20080317AGE	CP
19A IL CHICAGO	DTVPLN	DTVP0676	PLN
19A IL PEORIA	DTVPLN	DTVP0678	PLN
20A WI MADISON	BLEDT	20020503AAF	LIC
19A MI GRAND RAPIDS	USERRECORD01		APP

Percent new IX = 0.0000%

Result key: 48

Scenario 4 Affected station 12

Before Analysis

Results for: 19A WI MADISON	DTVPLN	DTVP0708	PLN
HAAT 387.0 m, ATV ERP 56.0 kW			
	POPULATION	AREA (sq km)	
within Noise Limited Contour	1071361	22699.7	
not affected by terrain losses	1067516	22506.3	
lost to NTSC IX	0	0.0	
lost to additional IX by ATV	41498	1309.4	
lost to ATV IX only	41498	1309.4	
lost to all IX	41498	1309.4	

Potential Interfering Stations Included in above Scenario 4

18A WI MILWAUKEE	BPCDT	20080317AGE	CP
19A IL CHICAGO	DTVPLN	DTVP0676	PLN
19A IL PEORIA	DTVPLN	DTVP0678	PLN
20A WI MADISON	DTVPLN	DTVP0748	PLN
19A MI GRAND RAPIDS	DTVPLN	DTVP0685	PLN

After Analysis

Results for: 19A WI MADISON	DTVPLN	DTVP0708	PLN
HAAT 387.0 m, ATV ERP 56.0 kW			
	POPULATION	AREA (sq km)	
within Noise Limited Contour	1071361	22699.7	
not affected by terrain losses	1067516	22506.3	
lost to NTSC IX	0	0.0	
lost to additional IX by ATV	41498	1309.4	
lost to ATV IX only	41498	1309.4	
lost to all IX	41498	1309.4	

Potential Interfering Stations Included in above Scenario 4

18A WI MILWAUKEE	BPCDT	20080317AGE	CP
19A IL CHICAGO	DTVPLN	DTVP0676	PLN
19A IL PEORIA	DTVPLN	DTVP0678	PLN
20A WI MADISON	DTVPLN	DTVP0748	PLN
19A MI GRAND RAPIDS	USERRECORD01		APP

Percent new IX = 0.0000%

Figure 3

Result key: 49
 Scenario 5 Affected station 12
 Before Analysis

Results for: 19A WI MADISON DTVPLN DTVP0708 PLN
 HAAT 387.0 m, ATV ERP 56.0 kW

	POPULATION	AREA (sq km)
within Noise Limited Contour	1071361	22699.7
not affected by terrain losses	1067516	22506.3
lost to NTSC IX	0	0.0
lost to additional IX by ATV	41498	1309.4
lost to ATV IX only	41498	1309.4
lost to all IX	41498	1309.4

Potential Interfering Stations Included in above Scenario 5

18A WI MILWAUKEE	DTVPLN	DTVP0662	PLN
19A IL CHICAGO	BLCDT	20040316ACQ	LIC
19A IL PEORIA	DTVPLN	DTVP0678	PLN
20A WI MADISON	BLEDT	20020503AAF	LIC
19A MI GRAND RAPIDS	DTVPLN	DTVP0685	PLN

After Analysis

Results for: 19A WI MADISON DTVPLN DTVP0708 PLN
 HAAT 387.0 m, ATV ERP 56.0 kW

	POPULATION	AREA (sq km)
within Noise Limited Contour	1071361	22699.7
not affected by terrain losses	1067516	22506.3
lost to NTSC IX	0	0.0
lost to additional IX by ATV	41498	1309.4
lost to ATV IX only	41498	1309.4
lost to all IX	41498	1309.4

Potential Interfering Stations Included in above Scenario 5

18A WI MILWAUKEE	DTVPLN	DTVP0662	PLN
19A IL CHICAGO	BLCDT	20040316ACQ	LIC
19A IL PEORIA	DTVPLN	DTVP0678	PLN
20A WI MADISON	BLEDT	20020503AAF	LIC
19A MI GRAND RAPIDS	USERRECORD01		APP

Percent new IX = 0.0000%

Result key: 50
 Scenario 6 Affected station 12
 Before Analysis

Results for: 19A WI MADISON DTVPLN DTVP0708 PLN
 HAAT 387.0 m, ATV ERP 56.0 kW

	POPULATION	AREA (sq km)
within Noise Limited Contour	1071361	22699.7
not affected by terrain losses	1067516	22506.3
lost to NTSC IX	0	0.0
lost to additional IX by ATV	41498	1309.4
lost to ATV IX only	41498	1309.4

Figure 3

lost to all IX 41498 1309.4

Potential Interfering Stations Included in above Scenario 6

18A WI MILWAUKEE	DTVPLN	DTVP0662	PLN
19A IL CHICAGO	BLCDT	20040316ACQ	LIC
19A IL PEORIA	DTVPLN	DTVP0678	PLN
20A WI MADISON	DTVPLN	DTVP0748	PLN
19A MI GRAND RAPIDS	DTVPLN	DTVP0685	PLN

After Analysis

Results for: 19A WI MADISON DTVPLN DTVP0708 PLN
 HAAT 387.0 m, ATV ERP 56.0 kW

	POPULATION	AREA (sq km)
within Noise Limited Contour	1071361	22699.7
not affected by terrain losses	1067516	22506.3
lost to NTSC IX	0	0.0
lost to additional IX by ATV	41498	1309.4
lost to ATV IX only	41498	1309.4
lost to all IX	41498	1309.4

Potential Interfering Stations Included in above Scenario 6

18A WI MILWAUKEE	DTVPLN	DTVP0662	PLN
19A IL CHICAGO	BLCDT	20040316ACQ	LIC
19A IL PEORIA	DTVPLN	DTVP0678	PLN
20A WI MADISON	DTVPLN	DTVP0748	PLN
19A MI GRAND RAPIDS	USERRECORD01		APP

Percent new IX = 0.0000%

Result key: 51
 Scenario 7 Affected station 12
 Before Analysis

Results for: 19A WI MADISON DTVPLN DTVP0708 PLN
 HAAT 387.0 m, ATV ERP 56.0 kW

	POPULATION	AREA (sq km)
within Noise Limited Contour	1071361	22699.7
not affected by terrain losses	1067516	22506.3
lost to NTSC IX	0	0.0
lost to additional IX by ATV	41498	1309.4
lost to ATV IX only	41498	1309.4
lost to all IX	41498	1309.4

Potential Interfering Stations Included in above Scenario 7

18A WI MILWAUKEE	DTVPLN	DTVP0662	PLN
19A IL CHICAGO	DTVPLN	DTVP0676	PLN
19A IL PEORIA	DTVPLN	DTVP0678	PLN
20A WI MADISON	BLEDT	20020503AAF	LIC
19A MI GRAND RAPIDS	DTVPLN	DTVP0685	PLN

After Analysis

Results for: 19A WI MADISON DTVPLN DTVP0708 PLN

Figure 3

HAAT 387.0 m, ATV ERP 56.0 kW

	POPULATION	AREA (sq km)
within Noise Limited Contour	1071361	22699.7
not affected by terrain losses	1067516	22506.3
lost to NTSC IX	0	0.0
lost to additional IX by ATV	41498	1309.4
lost to ATV IX only	41498	1309.4
lost to all IX	41498	1309.4

Potential Interfering Stations Included in above Scenario 7

18A WI MILWAUKEE	DTVPLN	DTVP0662	PLN
19A IL CHICAGO	DTVPLN	DTVP0676	PLN
19A IL PEORIA	DTVPLN	DTVP0678	PLN
20A WI MADISON	BLEDT	20020503AAF	LIC
19A MI GRAND RAPIDS	USERRECORD01		APP

Percent new IX = 0.0000%

Result key: 52
Scenario 8 Affected station 12
Before Analysis

Results for: 19A WI MADISON DTVPLN DTVP0708 PLN

HAAT 387.0 m, ATV ERP 56.0 kW

	POPULATION	AREA (sq km)
within Noise Limited Contour	1071361	22699.7
not affected by terrain losses	1067516	22506.3
lost to NTSC IX	0	0.0
lost to additional IX by ATV	41498	1309.4
lost to ATV IX only	41498	1309.4
lost to all IX	41498	1309.4

Potential Interfering Stations Included in above Scenario 8

18A WI MILWAUKEE	DTVPLN	DTVP0662	PLN
19A IL CHICAGO	DTVPLN	DTVP0676	PLN
19A IL PEORIA	DTVPLN	DTVP0678	PLN
20A WI MADISON	DTVPLN	DTVP0748	PLN
19A MI GRAND RAPIDS	DTVPLN	DTVP0685	PLN

After Analysis

Results for: 19A WI MADISON DTVPLN DTVP0708 PLN

HAAT 387.0 m, ATV ERP 56.0 kW

	POPULATION	AREA (sq km)
within Noise Limited Contour	1071361	22699.7
not affected by terrain losses	1067516	22506.3
lost to NTSC IX	0	0.0
lost to additional IX by ATV	41498	1309.4
lost to ATV IX only	41498	1309.4
lost to all IX	41498	1309.4

Potential Interfering Stations Included in above Scenario 8

18A WI MILWAUKEE	DTVPLN	DTVP0662	PLN
19A IL CHICAGO	DTVPLN	DTVP0676	PLN

Figure 3

19A IL PEORIA	DTVPLN	DTVP0678	PLN
20A WI MADISON	DTVPLN	DTVP0748	PLN
19A MI GRAND RAPIDS	USERRECORD01		APP

Percent new IX = 0.0000%

Worst case new IX 0.0000% Scenario 1

#####

Analysis of Interference to Affected Station 13

Analysis of current record

Channel	Call	City/State	Application	Ref. No.
20	WOTV	BATTLE CREEK MI	BLCDT	-20030721AHS

Stations Potentially Affecting This Station

Chan	Call	City/State	Dist(km)	Status	Application	Ref. No.
19	WGN-TV	CHICAGO IL	194.3	LIC	BLCDT	-20040316ACQ
19	WGN-TV	CHICAGO IL	194.3	PLN	DTVPLN	-DTVP0676
19	WISE-TV	FORT WAYNE IN	165.9	LIC	BLCDT	-20070509AEQ
19	WISE-TV	FORT WAYNE IN	165.9	PLN	DTVPLN	-DTVP0679
19	WXMI	GRAND RAPIDS MI	14.0	PLN	DTVPLN	-DTVP0685
20	WHA-TV	MADISON WI	335.9	LIC	BLEDT	-20020503AAF
20	WHA-TV	MADISON WI	335.9	PLN	DTVPLN	-DTVP0748
21	WYCC	CHICAGO IL	192.4	LIC	BLEDT	-20030501ABC
21	WYCC	CHICAGO IL	192.4	PLN	DTVPLN	-DTVP0759
21	WMYD	DETROIT MI	188.6	LIC	BLCDT	-20040524AOG
21	WMYD	DETROIT MI	188.6	PLN	DTVPLN	-DTVP0768
21	WCMW	MANISTEE MI	180.3	PLN	DTVPLN	-DTVP0769
21	WCMW	MANISTEE MI	180.3	CP	BPEDT	-20080222ABG
19	WXMI	GRAND RAPIDS MI	14.0	APP	USERRECORD-01	

Total scenarios = 1

Result key: 53
Scenario 1 Affected station 13
Before Analysis

Results for: 20A MI BATTLE CREEK BLCDT 20030721AHS LIC

HAAT 311.0 m, ATV ERP 270.0 kW

	POPULATION	AREA (sq km)
within Noise Limited Contour	2129025	25260.0
not affected by terrain losses	2128717	25248.0
lost to NTSC IX	0	0.0
lost to additional IX by ATV	9557	164.6
lost to ATV IX only	9557	164.6
lost to all IX	9557	164.6

Potential Interfering Stations Included in above Scenario 1

19A MI GRAND RAPIDS	DTVPLN	DTVP0685	PLN
---------------------	--------	----------	-----

Figure 3

After Analysis

Results for: 20A MI BATTLE CREEK BLCDT 20030721AHS LIC
 HAAT 311.0 m, ATV ERP 270.0 kW

	POPULATION	AREA (sq km)
within Noise Limited Contour	2129025	25260.0
not affected by terrain losses	2128717	25248.0
lost to NTSC IX	0	0.0
lost to additional IX by ATV	15003	232.8
lost to ATV IX only	15003	232.8
lost to all IX	15003	232.8

Potential Interfering Stations Included in above Scenario 1

19A MI GRAND RAPIDS USERRECORD01 APP

Percent new IX = 0.2570%

Worst case new IX 0.2570% Scenario 1

#####

Analysis of Interference to Affected Station 14

Analysis of current record

Channel	Call	City/State	Application	Ref. No.
20	WOTV	BATTLE CREEK MI	DTVPLN	-DTVP0728

Stations Potentially Affecting This Station

Chan	Call	City/State	Dist(km)	Status	Application	Ref. No.
19	WGN-TV	CHICAGO IL	194.3	LIC	BLCDT	-20040316ACQ
19	WGN-TV	CHICAGO IL	194.3	PLN	DTVPLN	-DTVP0676
19	WISE-TV	FORT WAYNE IN	165.9	LIC	BLCDT	-20070509AEQ
19	WISE-TV	FORT WAYNE IN	165.9	PLN	DTVPLN	-DTVP0679
19	WXMI	GRAND RAPIDS MI	14.0	PLN	DTVPLN	-DTVP0685
20	WHA-TV	MADISON WI	335.9	LIC	BLEDT	-20020503AAF
20	WHA-TV	MADISON WI	335.9	PLN	DTVPLN	-DTVP0748
21	WYCC	CHICAGO IL	192.4	LIC	BLEDT	-20030501ABC
21	WYCC	CHICAGO IL	192.4	PLN	DTVPLN	-DTVP0759
21	WMYD	DETROIT MI	188.6	LIC	BLCDT	-20040524AOG
21	WMYD	DETROIT MI	188.6	PLN	DTVPLN	-DTVP0768
21	WCMW	MANISTEE MI	180.3	PLN	DTVPLN	-DTVP0769
21	WCMW	MANISTEE MI	180.3	CP	BPEDT	-20080222ABG
19	WXMI	GRAND RAPIDS MI	14.0	APP	USERRECORD-01	

Total scenarios = 1

Result key: 54
 Scenario 1 Affected station 14
 Before Analysis

Results for: 20A MI BATTLE CREEK DTVPLN DTVP0728 PLN
 HAAT 311.0 m, ATV ERP 270.0 kW

Figure 3

	POPULATION	AREA (sq km)
within Noise Limited Contour	2129025	25260.0
not affected by terrain losses	2128717	25248.0
lost to NTSC IX	0	0.0
lost to additional IX by ATV	9557	164.6
lost to ATV IX only	9557	164.6
lost to all IX	9557	164.6

Potential Interfering Stations Included in above Scenario 1

19A MI GRAND RAPIDS DTVPLN DTVP0685 PLN

After Analysis

Results for: 20A MI BATTLE CREEK DTVPLN DTVP0728 PLN
 HAAT 311.0 m, ATV ERP 270.0 kW

	POPULATION	AREA (sq km)
within Noise Limited Contour	2129025	25260.0
not affected by terrain losses	2128717	25248.0
lost to NTSC IX	0	0.0
lost to additional IX by ATV	15003	232.8
lost to ATV IX only	15003	232.8
lost to all IX	15003	232.8

Potential Interfering Stations Included in above Scenario 1

19A MI GRAND RAPIDS USERRECORD01 APP

Percent new IX = 0.2570%

Worst case new IX 0.2570% Scenario 1

#####

Analysis of Interference to Affected Station 15

Analysis of current record

Channel	Call	City/State	Application	Ref. No.
27	WOLP-CA	GRAND RAPIDS MI	BLTTL	-19980626JE

Stations Potentially Affecting This Station

Chan	Call	City/State	Dist(km)	Status	Application	Ref. No.
19	WXMI	GRAND RAPIDS MI	31.9	PLN	DTVPLN	-DTVP0685
19	WXMI	GRAND RAPIDS MI	31.9	LIC	BLCDT	-20030117ABD
20	WOTV	BATTLE CREEK MI	45.9	LIC	BLCDT	-20030721AHS
20	WOTV	BATTLE CREEK MI	45.9	PLN	DTVPLN	-DTVP0728
24	WTLJ	MUSKEGON MI	20.1	LIC	BLCDT	-20051115ABP
24	WTLJ	MUSKEGON MI	20.1	PLN	DTVPLN	-DTVP0888
26	WCMU-TV	MOUNT PLEASANT MI	95.2	CP	BPEDT	-20080222ABE
26	WCMU-TV	MOUNT PLEASANT MI	95.2	PLN	DTVPLN	-DTVP0959
27	WCIU-TV	CHICAGO IL	202.1	CP MOD	BMPCDT	-20021202ABR
27	WCIU-TV	CHICAGO IL	202.1	PLN	DTVPLN	-DTVP0998
27	WCCU	URBANA IL	349.1	LIC	BLCT	-20020226AAA
27	WCMV	CADILLAC MI	133.5	LIC	BLET	-19841002KF

Figure 3

27	WBGU-TV	BOWLING GREEN OH	248.8	CP	BPET	-20030613AFZ
27	WBGU-TV	BOWLING GREEN OH	248.8	PLN	DTVPLN	-DTPV1014
27	WBGU-TV	BOWLING GREEN OH	248.8	CP	BPEDT	-20080225AHC
27	WACY	APPLETON WI	243.1	CP MOD	BMPCDT	-20061114ABU
27	WACY	APPLETON WI	243.1	PLN	DTVPLN	-DTPV1023
27	WKOW-TV	MADISON WI	315.5	LIC	BLCT	-20000306AAW
31	WPXD	ANN ARBOR MI	145.0	CP	BPCDT	-20080305ABI
31	WPXD	ANN ARBOR MI	145.0	PLN	DTVPLN	-DTPV1147
34	WHTV	JACKSON MI	108.5	CP MOD	BMPCDT	-20070125ACI
34	WHTV	JACKSON MI	110.2	PLN	DTVPLN	-DTPV1255
41	WOTV	BATTLE CREEK MI	45.9	LIC	BLCT	-19961120KE
19	WXMI	GRAND RAPIDS MI	31.9	APP	USERRECORD-01	

Proposal causes no interference

#####

Analysis of Interference to Affected Station 16

Channel	Call	City/State	Application Ref. No.
19	WXMI	GRAND RAPIDS MI	USERRECORD-01

Stations Potentially Affecting This Station

Chan	Call	City/State	Dist(km)	Status	Application Ref. No.
18	WVTV	MILWAUKEE WI	198.4	CP	BPCDT -20080317AGE
18	WVTV	MILWAUKEE WI	198.4	PLN	DTVPLN -DTPV0662
19	WGN-TV	CHICAGO IL	194.9	LIC	BLCDT -20040316ACQ
19	WGN-TV	CHICAGO IL	194.9	PLN	DTVPLN -DTPV0676
19	WHOI	PEORIA IL	405.5	PLN	DTVPLN -DTPV0678
19	WHOI	PEORIA IL	405.5	CP	BPCDT -20080317AHQ
19	WISE-TV	FORT WAYNE IN	179.5	LIC	BLCDT -20070509AEQ
19	WISE-TV	FORT WAYNE IN	179.6	PLN	DTVPLN -DTPV0679
19	WMTV	MADISON WI	324.6	LIC	BLCDT -20040823ABP
19	WMTV	MADISON WI	324.6	PLN	DTVPLN -DTPV0708
20	WOTV	BATTLE CREEK MI	14.0	LIC	BLCDT -20030721AHS
20	WOTV	BATTLE CREEK MI	14.0	PLN	DTVPLN -DTPV0728

Total scenarios = 8

Result key: 56
 Scenario 1 Affected station 16
 Before Analysis

Results for: 19A MI GRAND RAPIDS		USERRECORD01	APP
HAAT	332.0 m, ATV ERP	750.0 kW	
	POPULATION	AREA (sq km)	
within Noise Limited Contour	2340357	30046.6	
not affected by terrain losses	2339595	30018.6	
lost to NTSC IX	0	0.0	
lost to additional IX by ATV	58138	1759.7	
lost to ATV IX only	58138	1759.7	
lost to all IX	58138	1759.7	

Figure 3

Potential Interfering Stations Included in above Scenario 1

19A IL CHICAGO	BLCDT	20040316ACQ	LIC
19A IN FORT WAYNE	BLCDT	20070509AEQ	LIC
20A MI BATTLE CREEK	BLCDT	20030721AHS	LIC

Result key: 56
 Scenario 2 Affected station 16
 Before Analysis

Results for: 19A MI GRAND RAPIDS		USERRECORD01	APP
HAAT	332.0 m, ATV ERP	750.0 kW	
	POPULATION	AREA (sq km)	
within Noise Limited Contour	2340357	30046.6	
not affected by terrain losses	2339595	30018.6	
lost to NTSC IX	0	0.0	
lost to additional IX by ATV	58138	1759.7	
lost to ATV IX only	58138	1759.7	
lost to all IX	58138	1759.7	

Potential Interfering Stations Included in above Scenario 2

19A IL CHICAGO	BLCDT	20040316ACQ	LIC
19A IN FORT WAYNE	BLCDT	20070509AEQ	LIC
20A MI BATTLE CREEK	DTVPLN	DTPV0728	PLN

Result key: 57
 Scenario 3 Affected station 16
 Before Analysis

Results for: 19A MI GRAND RAPIDS		USERRECORD01	APP
HAAT	332.0 m, ATV ERP	750.0 kW	
	POPULATION	AREA (sq km)	
within Noise Limited Contour	2340357	30046.6	
not affected by terrain losses	2339595	30018.6	
lost to NTSC IX	0	0.0	
lost to additional IX by ATV	58138	1759.7	
lost to ATV IX only	58138	1759.7	
lost to all IX	58138	1759.7	

Potential Interfering Stations Included in above Scenario 3

19A IL CHICAGO	BLCDT	20040316ACQ	LIC
19A IN FORT WAYNE	DTVPLN	DTPV0679	PLN
20A MI BATTLE CREEK	BLCDT	20030721AHS	LIC

Result key: 58
 Scenario 4 Affected station 16
 Before Analysis

Results for: 19A MI GRAND RAPIDS		USERRECORD01	APP
HAAT	332.0 m, ATV ERP	750.0 kW	
	POPULATION	AREA (sq km)	
within Noise Limited Contour	2340357	30046.6	
not affected by terrain losses	2339595	30018.6	
lost to NTSC IX	0	0.0	
lost to additional IX by ATV	58138	1759.7	

Figure 3

```
lost to ATV IX only          58138      1759.7
lost to all IX               58138      1759.7

Potential Interfering Stations Included in above Scenario      4

19A IL CHICAGO              BLCDT      20040316ACQ  LIC
19A IN FORT WAYNE           DTVPLN      DTVP0679    PLN
20A MI BATTLE CREEK         DTVPLN      DTVP0728    PLN

Result key:                59
Scenario      5  Affected station      16
Before Analysis

Results for: 19A MI GRAND RAPIDS      USERRECORD01      APP
HAAT  332.0 m, ATV ERP  750.0 kW
      POPULATION      AREA (sq km)
within Noise Limited Contour      2340357      30046.6
not affected by terrain losses      2339595      30018.6
lost to NTSC IX                    0          0.0
lost to additional IX by ATV        58138      1759.7
lost to ATV IX only                 58138      1759.7
lost to all IX                     58138      1759.7

Potential Interfering Stations Included in above Scenario      5

19A IL CHICAGO              DTVPLN      DTVP0676    PLN
19A IN FORT WAYNE           BLCDT      20070509AEQ  LIC
20A MI BATTLE CREEK         BLCDT      20030721AHS  LIC

Result key:                60
Scenario      6  Affected station      16
Before Analysis

Results for: 19A MI GRAND RAPIDS      USERRECORD01      APP
HAAT  332.0 m, ATV ERP  750.0 kW
      POPULATION      AREA (sq km)
within Noise Limited Contour      2340357      30046.6
not affected by terrain losses      2339595      30018.6
lost to NTSC IX                    0          0.0
lost to additional IX by ATV        58138      1759.7
lost to ATV IX only                 58138      1759.7
lost to all IX                     58138      1759.7

Potential Interfering Stations Included in above Scenario      6

19A IL CHICAGO              DTVPLN      DTVP0676    PLN
19A IN FORT WAYNE           BLCDT      20070509AEQ  LIC
20A MI BATTLE CREEK         DTVPLN      DTVP0728    PLN

Result key:                61
Scenario      7  Affected station      16
Before Analysis

Results for: 19A MI GRAND RAPIDS      USERRECORD01      APP
HAAT  332.0 m, ATV ERP  750.0 kW
      POPULATION      AREA (sq km)
within Noise Limited Contour      2340357      30046.6
```

Figure 3

```
not affected by terrain losses      2339595      30018.6
lost to NTSC IX                    0          0.0
lost to additional IX by ATV        58138      1759.7
lost to ATV IX only                 58138      1759.7
lost to all IX                     58138      1759.7

Potential Interfering Stations Included in above Scenario      7

19A IL CHICAGO              DTVPLN      DTVP0676    PLN
19A IN FORT WAYNE           DTVPLN      DTVP0679    PLN
20A MI BATTLE CREEK         BLCDT      20030721AHS  LIC

Result key:                62
Scenario      8  Affected station      16
Before Analysis

Results for: 19A MI GRAND RAPIDS      USERRECORD01      APP
HAAT  332.0 m, ATV ERP  750.0 kW
      POPULATION      AREA (sq km)
within Noise Limited Contour      2340357      30046.6
not affected by terrain losses      2339595      30018.6
lost to NTSC IX                    0          0.0
lost to additional IX by ATV        58138      1759.7
lost to ATV IX only                 58138      1759.7
lost to all IX                     58138      1759.7

Potential Interfering Stations Included in above Scenario      8

19A IL CHICAGO              DTVPLN      DTVP0676    PLN
19A IN FORT WAYNE           DTVPLN      DTVP0679    PLN
20A MI BATTLE CREEK         DTVPLN      DTVP0728    PLN

#####

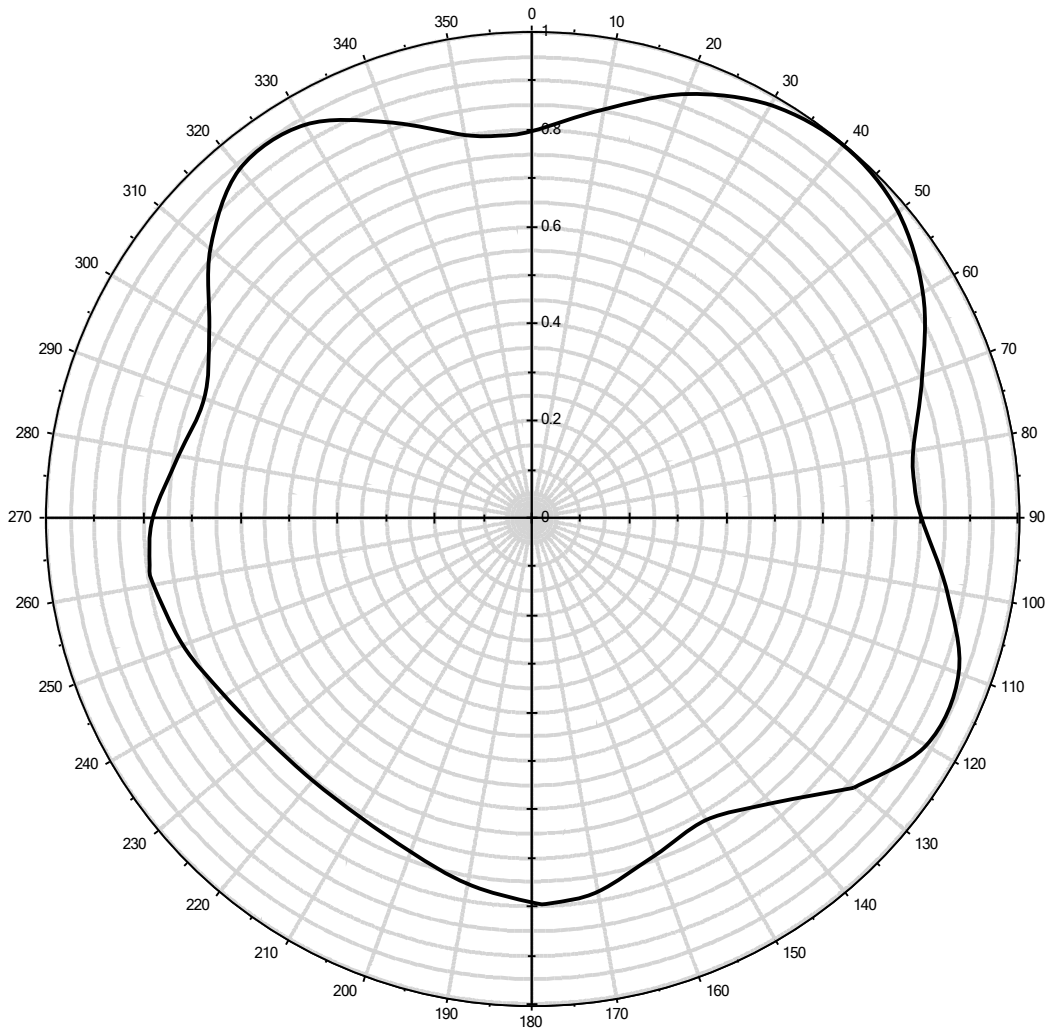
FINISHED FINISHED FINISHED FINISHED FINISHED FINISHED
```

APPENDIX

TRANSMITTING ANTENNA
HORIZONTAL PLANE PATTERN



Antenna Pattern: Antenna ID: 43814



Note: display reflects rotation of 130.00°

Antenna Details:

0°	0.864	60°	0.765	120°	0.765	180°	0.864	240°	0.855	300°	0.855	47°	0.793
10°	0.767	70°	0.731	130°	0.791	190°	0.937	250°	0.929	310°	0.797	133°	0.793
20°	0.718	80°	0.710	140°	0.781	200°	0.935	260°	0.982	320°	0.801	225°	0.790
30°	0.739	90°	0.704	150°	0.739	210°	0.867	270°	1.000	330°	0.867	315°	0.790
40°	0.781	100°	0.710	160°	0.718	220°	0.801	280°	0.982	340°	0.935		
50°	0.791	110°	0.731	170°	0.767	230°	0.797	290°	0.929	350°	0.937		

Antenna Make: DIE

Standard Pattern:

Antenna Model: TFU-36TH-R 6C150

Last Change Date: